

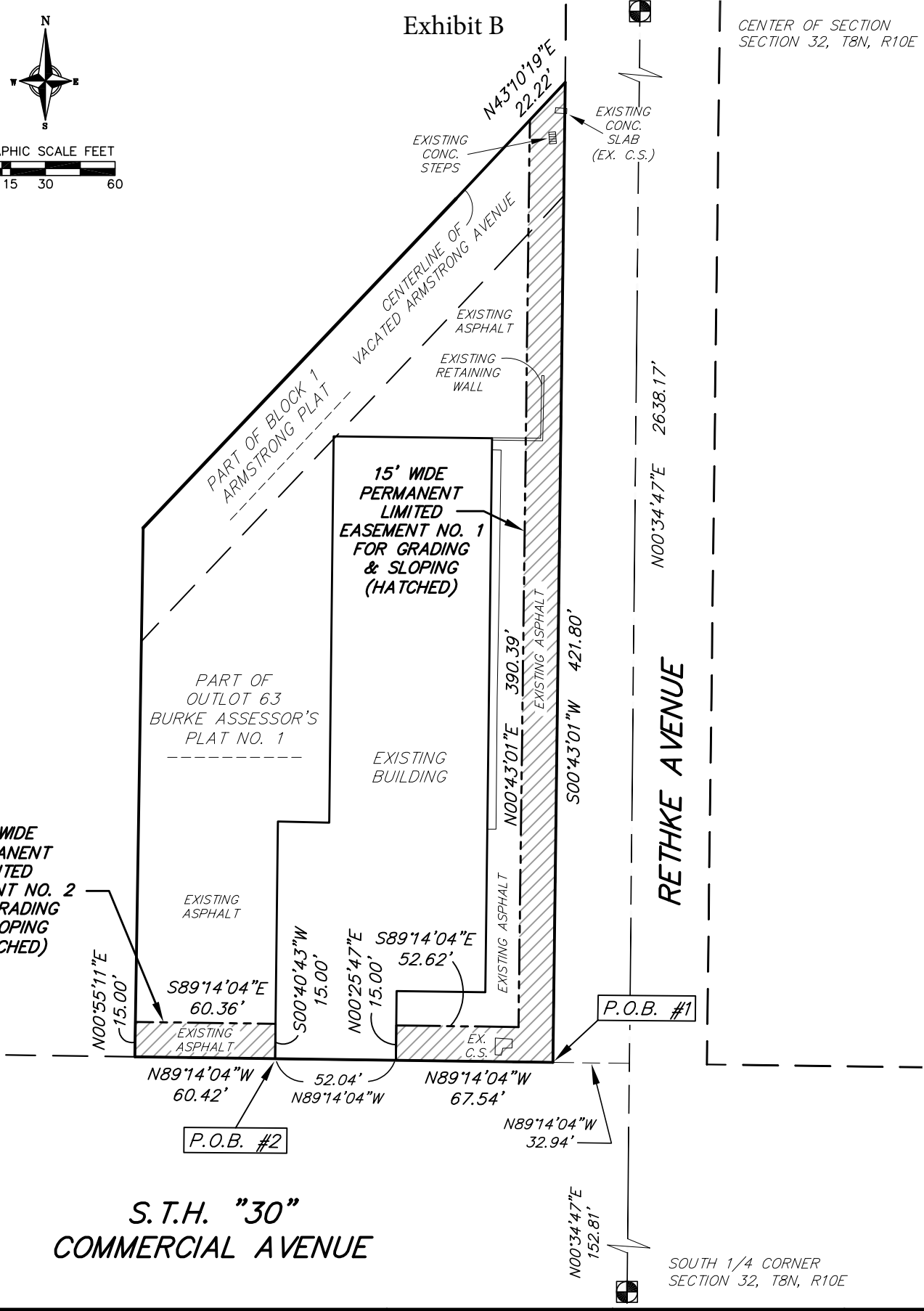


Exhibit B

CENTER OF SECTION  
SECTION 32, T8N, R10E

15' WIDE  
PERMANENT  
LIMITED  
EASEMENT NO. 2  
FOR GRADING  
& SLOPING  
(HATCHED)

15' WIDE  
PERMANENT  
LIMITED  
EASEMENT NO. 1  
FOR GRADING  
& SLOPING  
(HATCHED)



RETHKE AVENUE

S.T.H. "30"  
COMMERCIAL AVENUE

SOUTH 1/4 CORNER  
SECTION 32, T8N, R10E

**vierbicher**  
planners | engineers | advisors



Phone: (800) 261-3898

REVISIONS	SCALE	1"=60'	SHEET
	CHECKED	MSCH	
	DRAFTER	PKNU	1 OF 1
	FILE	SEE LEFT SIDE	
JOB NO.	DATE	8-28-2018	
	180113		