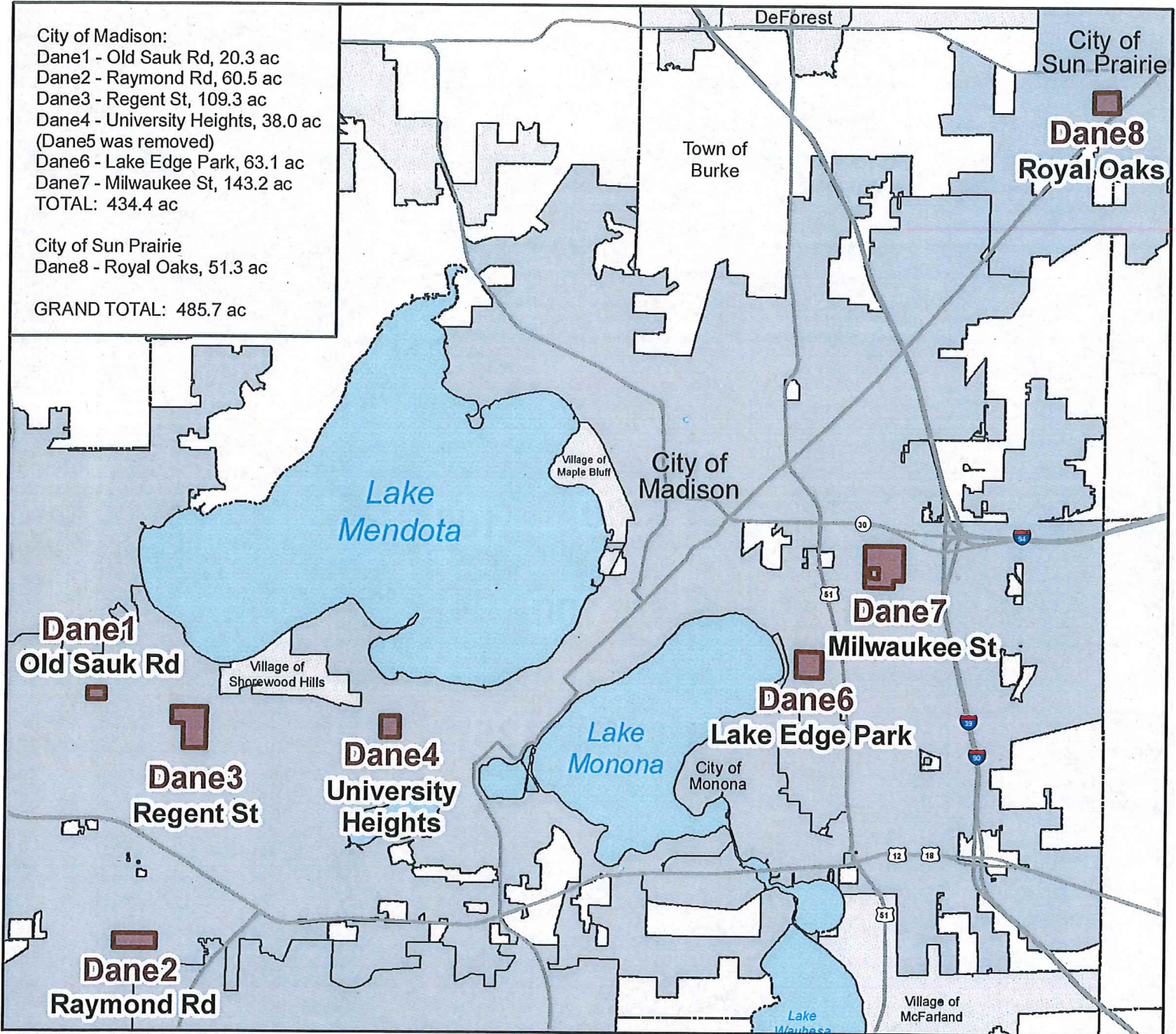
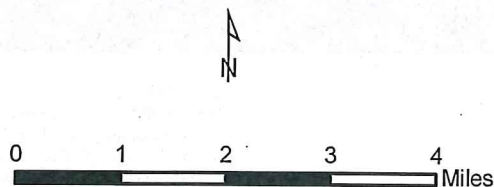


Final - Dane County Gypsy Moth Treatment Areas Overview Map (2017-18) - 7 Spray Blocks

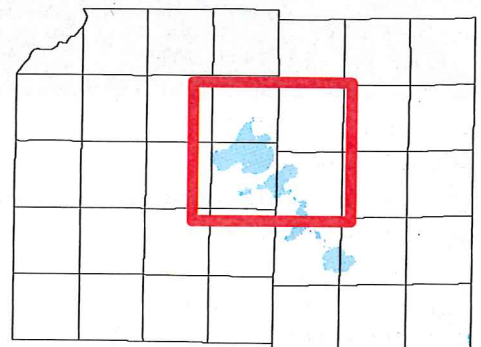


Explanation

-  Proposed Treatment Area
-  City
-  Village
-  Town
-  Major Lake
-  Major Road



Map Extent in Dane County



Proposed Treatment Areas were compiled by the Dane County Land & Water Resources Department (LWRD).
 Map updated March 7, 2018 by Dane County LWRD.

Final - Dane County Gypsy Moth Treatment Area - 2017/18

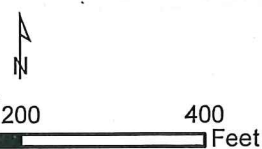
Treatment Area: Dane1 - Madison1 (Old Sauk Rd)
 Municipality: City of Madison (T7N R8E, s. 13, 24)
 Size: 20.3 ac

Map created 1/22/2018 by Dane County LWRD.



Explanation

- Proposed Treatment Area
- Egg Mass Survey Plot (numeric label is approx. egg mass count)
- Aerial Hazard/Institution
- Transmission Line
- Education Land Use (includes schools)
- Publicly Owned Land
- Parcel Boundary



Data Sources:

Treatment Areas / Egg Mass Data: Assembled by the Dane County LWRD with data from the City of Madison (2017)
 Aerial Hazards: Public Service Commission (2002), Dane County (2010, 2017), ATC (12/2010), other municipal and institutional agencies (2017)
 Transmission Lines: ATC (11/2017)
 Institutions: Land Use, Dane County (2017), City of Madison (2017)
 Parcel Boundaries: Dane County (11/2017)
 Digital Orthophoto: Dane County (4/2017)

Aerial hazard information is approximate and may not be complete.

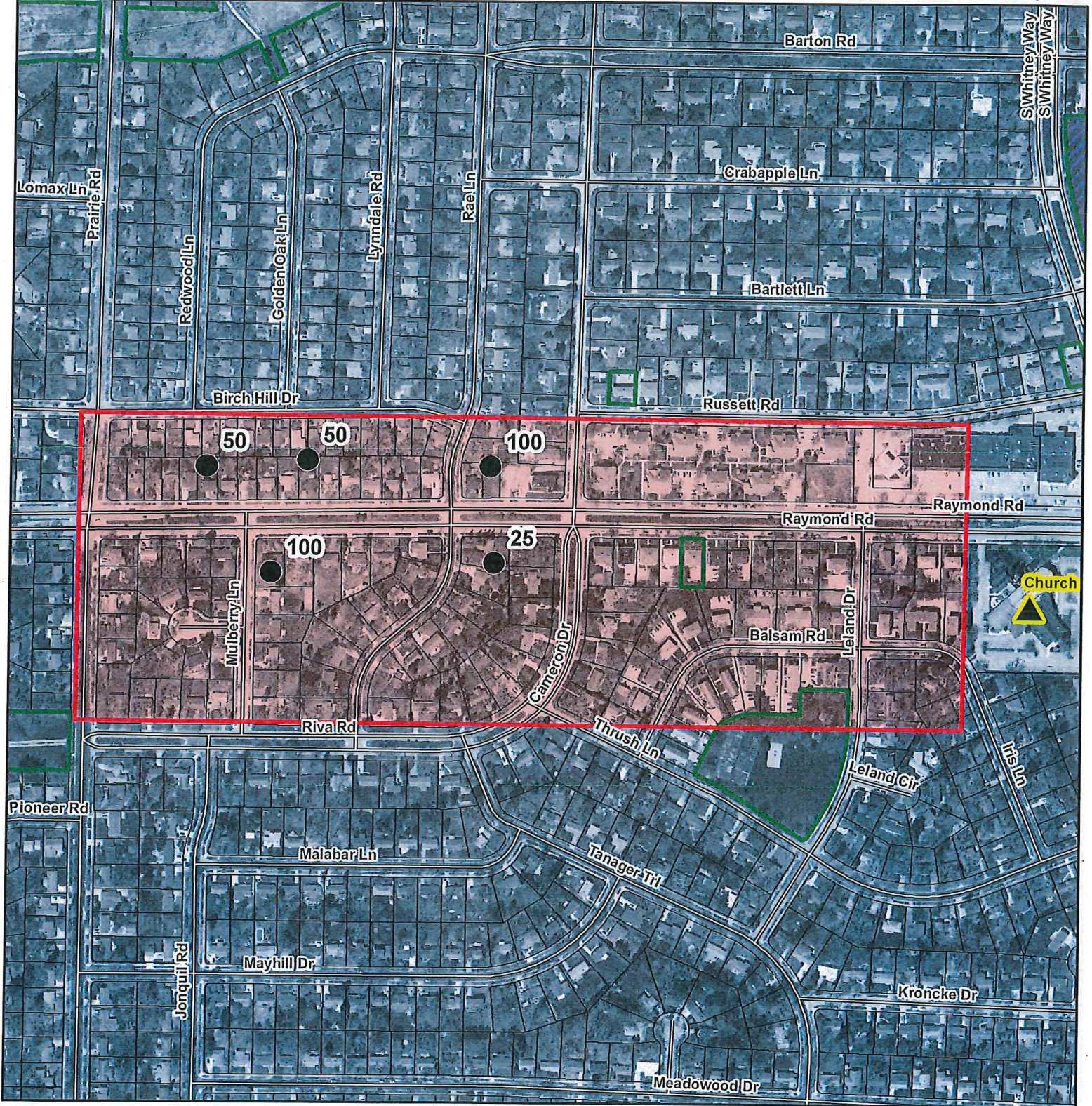
Final - Dane County Gypsy Moth Treatment Area - 2017/18

Treatment Area: Dane2 - Madison2 (Raymond Rd)

Municipality: City of Madison (T6N R8E, s. 1; T6N R8E, s. 6; T7N R8E, s. 36; T7N R9E, s. 31)

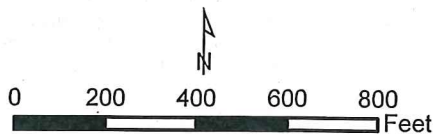
Size: 60.5 ac

Map created 1/22/2018 by Dane County LWRD.



Explanation

- Proposed Treatment Area
- Egg Mass Survey Plot (numeric label is approx. egg mass count)
- Aerial Hazard/Institution
- Transmission Line
- Education Land Use (includes schools)
- Publicly Owned Land
- Parcel Boundary



Data Sources:

Treatment Areas / Egg Mass Data: Assembled by the Dane County LWRD with data from the City of Madison (2017)
 Aerial Hazards: Public Service Commission (2002), Dane County (2010, 2017), ATC (12/2010), other municipal and institutional agencies (2017)
 Transmission Lines: ATC (11/2017)
 Institutions: Land Use, Dane County (2017), City of Madison (2017)
 Parcel Boundaries: Dane County (11/2017)
 Digital Orthophoto: Dane County (4/2017)

Aerial hazard information is approximate and may not be complete.

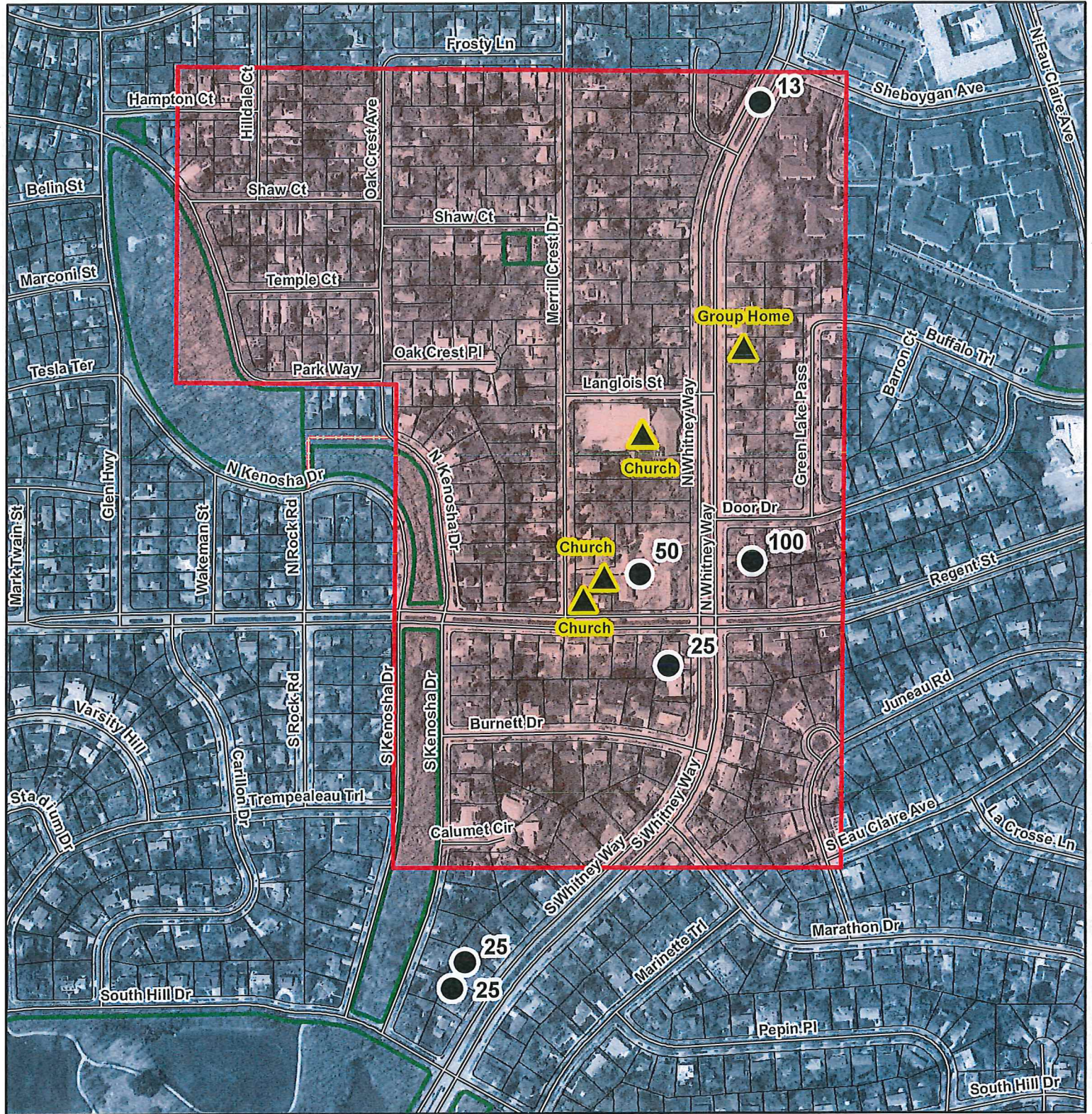
Final - Dane County Gypsy Moth Treatment Area - 2017/18

Treatment Area: Dane3 - Madison3 (Regent St)







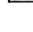
Municipality: City of Madison (T7N R9E, s. 19)

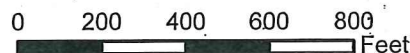
Size: 109.3 ac

Map created 3/7/2018 by Dane County LWRD.



Explanation

-  Proposed Treatment Area
-  Egg Mass Survey Plot (numeric label is approx. egg mass count)
-  Aerial Hazard/Institution
-  Transmission Line
-  Education Land Use (includes schools)
-  Publicly Owned Land
-  Parcel Boundary



Data Sources:

Treatment Areas / Egg Mass Data: Assembled by the Dane County LWRD with data from the City of Madison (2017)
Aerial Hazards: Public Service Commission (2002), Dane County (2010, 2017), ATC (12/2010), other municipal and institutional agencies (2017)
Transmission Lines: ATC (12/1/2010)
Institutions: Land Use, Dane County (2017), City of Madison (2017)
Parcel Boundaries: Dane County (1/2018)
Digital Orthophoto: Dane County (4/2017)

Aerial hazard information is approximate and may not be complete.

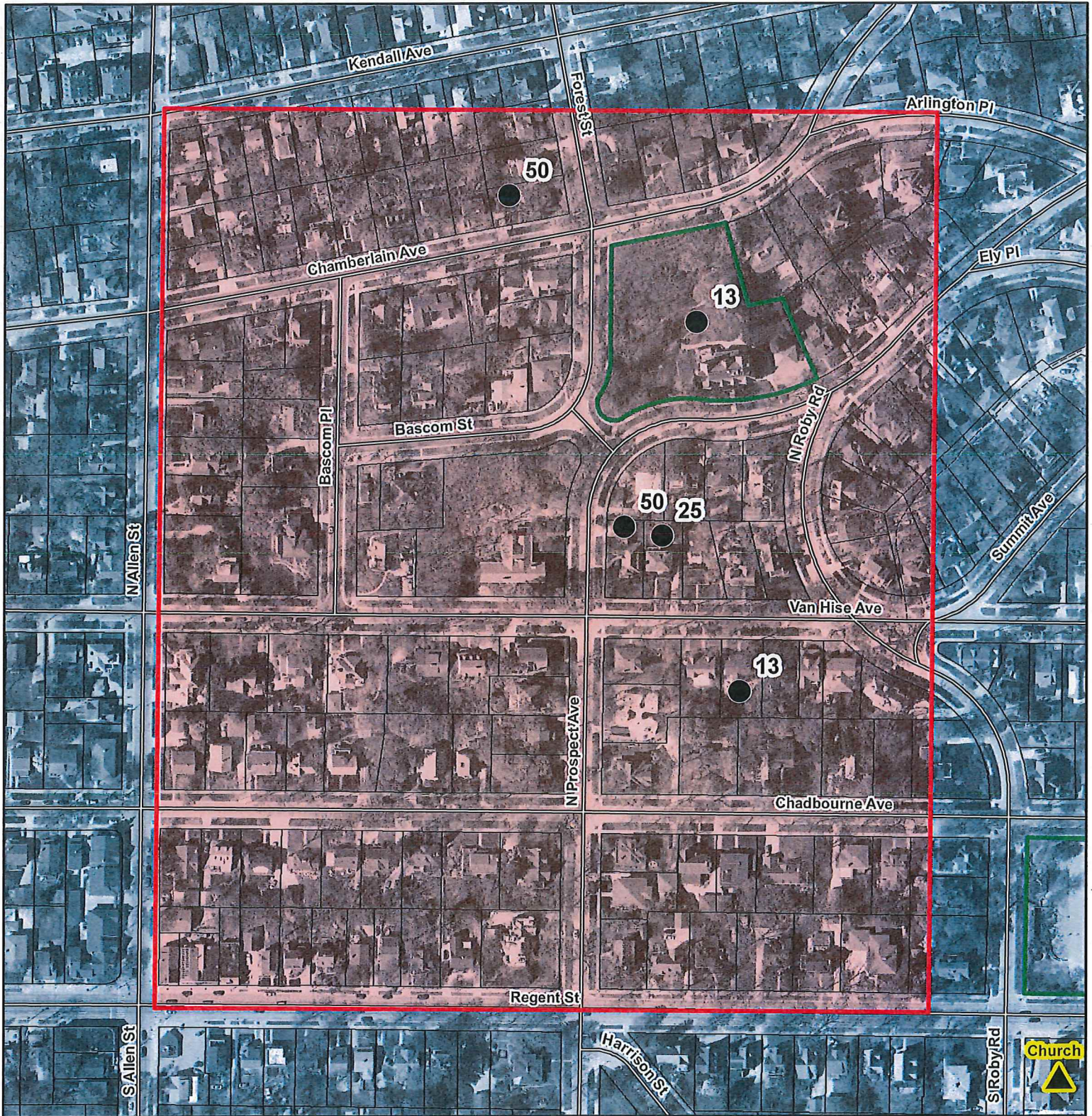
Final - Dane County Gypsy Moth Treatment Area - 2017/18

Treatment Area: Dane4 - Madison4 (University Heights)

Municipality: City of Madison (T7N R9E, s. 22)

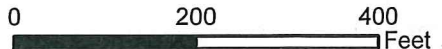
Size: 38.0 ac

Map created 1/22/2018 by Dane County LWRD.



Explanation

- Proposed Treatment Area
- Egg Mass Survey Plot (numeric label is approx. egg mass count)
- Aerial Hazard/Institution
- Transmission Line
- Education Land Use (includes schools)
- Publicly Owned Land
- Parcel Boundary



Data Sources:

Treatment Areas / Egg Mass Data: Assembled by the Dane County LWRD with data from the City of Madison (2017)
 Aerial Hazards: Public Service Commission (2002), Dane County (2010, 2017), ATC (12/2010), other municipal and institutional agencies (2017)
 Transmission Lines: ATC (12/1/2010)
 Institutions: Land Use, Dane County (2017), City of Madison (2017)
 Parcel Boundaries: Dane County (1/2018)
 Digital Orthophoto: Dane County (4/2017)

Aerial hazard information is approximate and may not be complete.

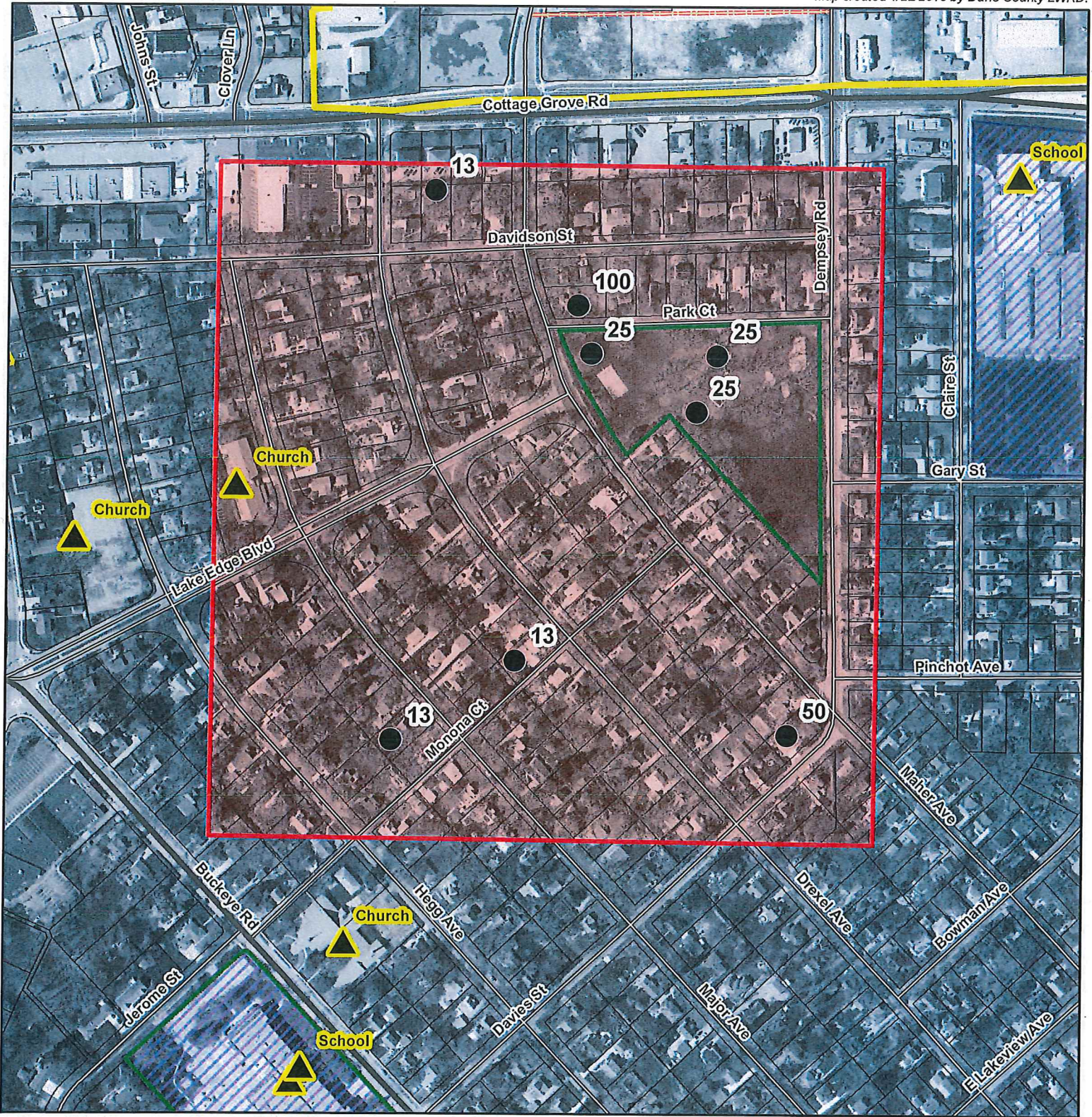
Final - Dane County Gypsy Moth Treatment Area - 2017/18

Treatment Area: Dane6 - Madison6 (Lake Edge Park)

Municipality: City of Madison (T7N R10E s. 9)

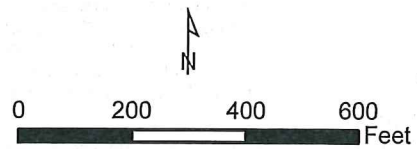
Size: 63.1 ac

Map created 1/22/2018 by Dane County LWRD.



Explanation

- Proposed Treatment Area
- Egg Mass Survey Plot (numeric label is approx. egg mass count)
- Aerial Hazard/Institution
- Transmission Line
- Education Land Use (includes schools)
- Publicly Owned Land
- Parcel Boundary



Data Sources:
 Treatment Areas / Egg Mass Data: Assembled by the Dane County LWRD with data from the City of Madison (2017)
 Aerial Hazards: Public Service Commission (2002), Dane County (2010, 2017), ATC (12/1/2010), other municipal and institutional agencies (2017)
 Transmission Lines: ATC (12/2010)
 Institutions: Land Use, Dane County (2017), City of Madison (2017)
 Parcel Boundaries: Dane County (1/2018)
 Digital Orthophoto: Dane County (4/2017)

Aerial hazard information is approximate and may not be complete.

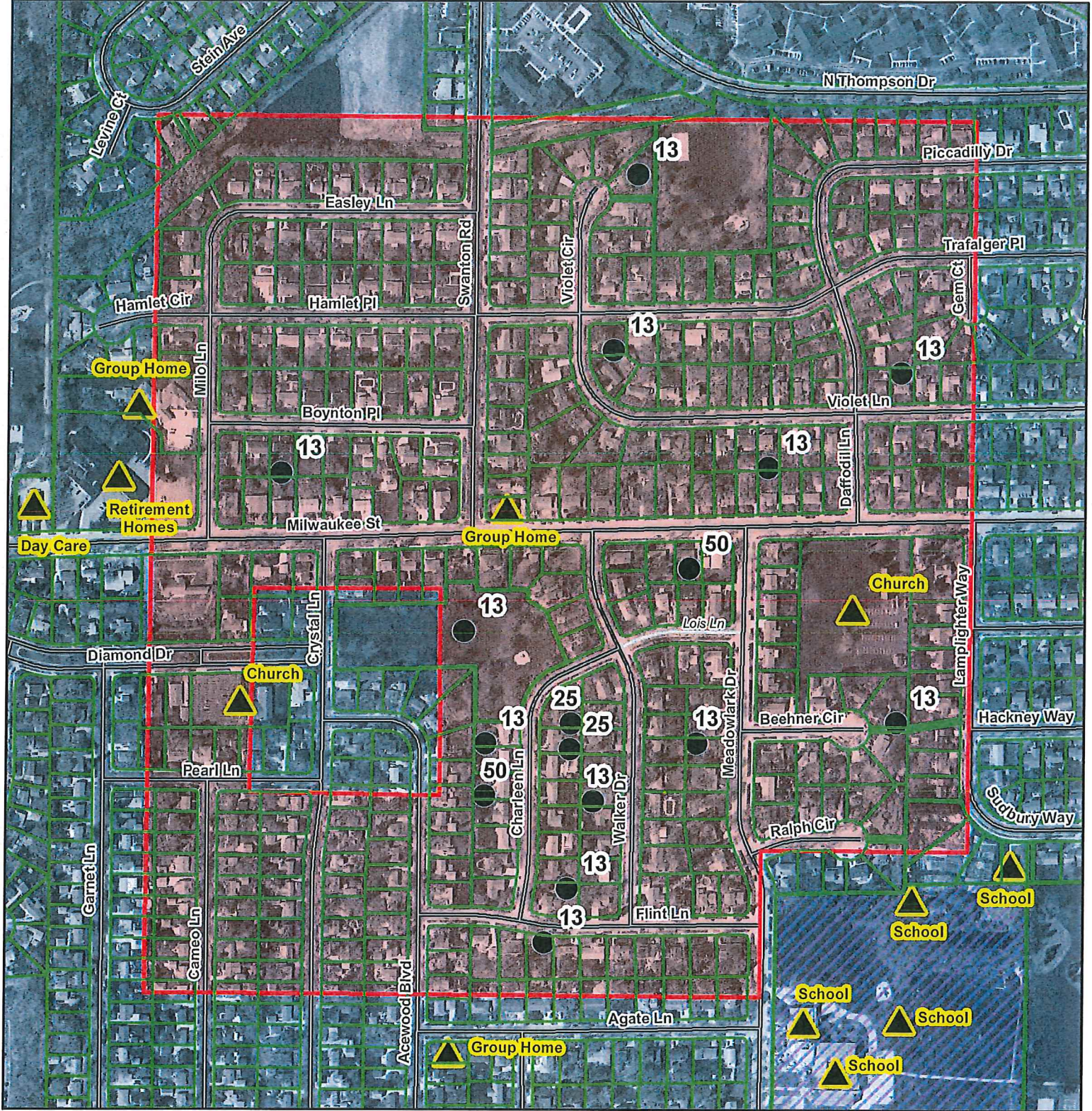
Final - Dane County Gypsy Moth Treatment Area - 2017/18

Treatment Area: Dane7 - Madison7 (Milwaukee St)

Municipality: City of Madison (T7N R10E s. 3)

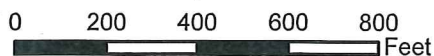
Size: 143.2 ac

Map created 3/7/2018 by Dane County LWRD.



Explanation

- ▬ Proposed Treatment Area
- Egg Mass Survey Plot (numeric label is approx. egg mass count)
- ▲ Aerial Hazard/Institution
- ▬ Transmission Line
- ▨ Education Land Use (includes schools)
- ▬ Publicly Owned Land
- ▬ Parcel Boundary



Data Sources:

Treatment Areas / Egg Mass Data: Assembled by the Dane County LWRD with data from the City of Madison (2017)
 Aerial Hazards: Public Service Commission (2002), Dane County (2010, 2017), ATC (12/1/2010), other municipal and institutional agencies (2017)
 Transmission Lines: ATC (12/2010)
 Institutions: Land Use, Dane County (2017), City of Madison (2017)
 Parcel Boundaries: Dane County (1/2018)
 Digital Orthophoto: Dane County (4/2017)

Aerial hazard information is approximate and may not be complete.