



August 5, 2015

Mr. Al Martin, Urban Design Commission
Department of Planning & Community Development
City of Madison
215 Martin Luther King Jr. Blvd.
Madison, WI 53701

Re: Letter of Intent
Sandburg Elementary School
4114 Donald Drive, Madison, WI
PRA Project No. 140248-09

Dear Mr. Martin:

The following re-submittal is our request for an Initial/Final Approval presentation to the Urban Design Commission on August 12th, 2015.

On July 29th as representative of the Madison Metropolitan School District I presented the referenced project to the Commission, and addressed comments and feedback for which the Commission voted for Referral of the project.

As a result we are addressing the following items:

- Canopy at south entry of new addition
- The exterior materials on the wall of gymnasium have been adjusted to incorporate banding that aligns with the form of the classroom addition
- Gymnasium incorporates solar tube lighting in the roof
- Vegetation vines suggested for the wall of gymnasium. The Landscape Architect, Steve Ziegler, had attempted to describe that the existing mature trees on the site which will remain are going to provide for visual obstruction of the new gymnasium wall.

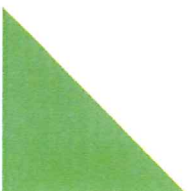
The attached materials represent the refinements we have made to accommodate the comments of the Commission.

Please contact us with any questions or for additional information that you request.


209 south water street milwaukee, wisconsin 53204 414 359 3060
2310 crossroads drive suite 2000 madison, wisconsin 53718 608 240 9900
1613 fruitville road suite 3 sarasota, florida 34236 941 348 3618

intelligent designs. inspired results. | www.prarch.com

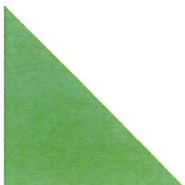
Partners: Michael P. Brush, Martin P. Choren, Gregg R. Golden, Mark C. Herr, John J. Holz, Nicholas D. Kent,
Steven A. Kieckhafer, Scott A. Kramer, David J. Raysich, Michael H. Scherbel, Michael J. Sobczak



Best regards,



Steven A. Kieckhafer, AIA
Architect





July 22, 2015

Mr. Al Martin, Urban Design Commission
Department of Planning & Community Development
City of Madison
215 Martin Luther King Jr. Blvd.
Madison, WI 53701

Re: Letter of Intent
Sandburg Elementary School
4114 Donald Drive, Madison, WI
PRA Project No. 140248-09

Dear Mr. Martin:

The following submittal is our request for an Initial/Final Approval presentation to the Urban Design Commission on July 29th, 2015.

Organizational Structure:

Owner:	Madison Metropolitan School District 545 W Dayton Street Madison, WI 53703 Contact: Rick Hopke rhopke@madison.k12.wi.us	Architect:	Plunkett Raysich Architects, LLP 2310 Crossroads Dr., Ste. 2000 Madison, WI 53718 Contact: Steve Kieckhafer SKieckhafer@prarch.com
Site/Civil:	Snyder & Associates 5010 Voges Road Madison, WI 53718 Contact: Brian Biwer bbiwer@snyder-associates.com	Landscape:	Ziegler Design 4797 Capital View Dr Middleton, WI 53562 Contact: Steve Ziegler steve@zdainc.com
Lighting:	KJWW Engineering 802 West Broadway Madison, WI 53713 Contact: Scott Hole holess@kjww.com		

209 south water street milwaukee, wisconsin 53204 414 359 3060
2310 crossroads drive suite 2000 madison, wisconsin 53718 608 240 9900
1613 fruitville road suite 3 sarasota, florida 34236 941 348 3618

intelligent designs. inspired results. | www.prarch.com

Partners: Michael P. Brush, Martin P. Choren, Gregg R. Golden, Mark C. Herr, John J. Holz, Nicholas D. Kent,
Steven A. Kieckhafer, Scott A. Kramer, David J. Raysich, Michael H. Scherbel, Michael J. Sobczak

Introduction:

The Madison Metropolitan School District developed a plan to present to the tax payers of the Madison Metropolitan School District that would update existing school facilities with the following categories; accommodate student capacity, handicap accessibility within buildings and safe/secure environment. The plan that was developed affects additions/renovations and infrastructure upgrades to 16 school buildings for a total of \$39 Million dollars. That plan, accepted by the School Board to take to referendum, went to vote on April 7, 2015, and was successful with 82% of approval.

Project Description:

The proposed addition is for a new classroom space, and new gymnasium space. Adding the classroom space will not increase the capacity of the building, but will alleviate the existing overcrowded classrooms spaces. Additional parking spaces will be provided as well as exterior play space.

Building Elements

An addition to the building will be constructed on the east side with exterior face brick and fiber cement panels. The architecture will be complementary to the existing building by incorporating similar design elements and materials that are part of the existing building. Windows and entrances will be aluminum that will match existing finishes.

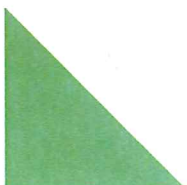
Site Development Statistics

Lot Area	~8.24 acres
Current building Gross Floor Area	38,288 s.f.
Proposed addition of Gross Floor Area	<u>14,742 s.f.</u>
New total Gross Floor Area	53,030.f.

Vehicle Parking

Existing On-site surface Parking	53 spaces	3 accessible
New On-site surface Parking	<u>12 spaces</u>	<u>0 accessible</u>
Total On-site surface Parking	65 spaces	3 accessible

Bike Parking



Bike Storage available to students, ~40 spaces

Moped Parking

Moped parking not provided

Project Schedule:

This project is anticipated to start construction in September, 2015 with completion scheduled for early 2016.

City Planning, Urban Design (UDC), Alderperson and Neighborhoods:

The following is a list of dates of which meetings were held to discuss the proposed project

February 23, 2015- City Zoning to provide notification of District progressing to referendum

April 14-June 7, 2015- Community/Parents to review project

June 9, 2015- City Zoning and UDC

June 25, 2015- DAT to present project

July 22, 2015 - Alder and Neighborhood notification

July 29, 2015 - UDC, Initial/Final Approval

Estimated Project Costs:

The project costs are estimated to be \$2,900,000

Public Subsidy:

This project will be funded totally with public bonds issued to the District through the approval of the successful referendum vote.



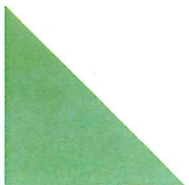
Please contact us with any questions or for additional information that you request.

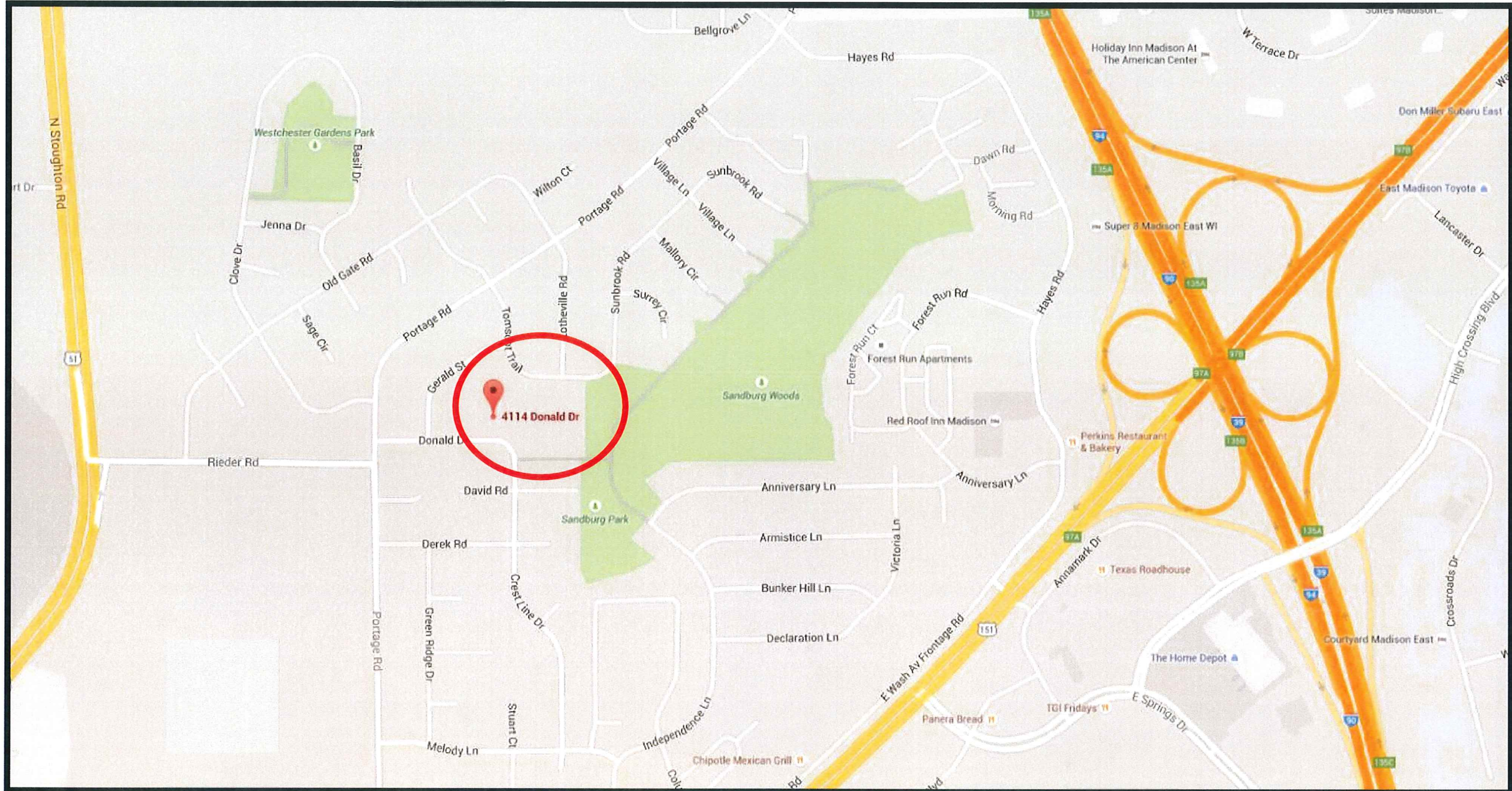
Thank you for your time in reviewing our proposal.

Best regards,



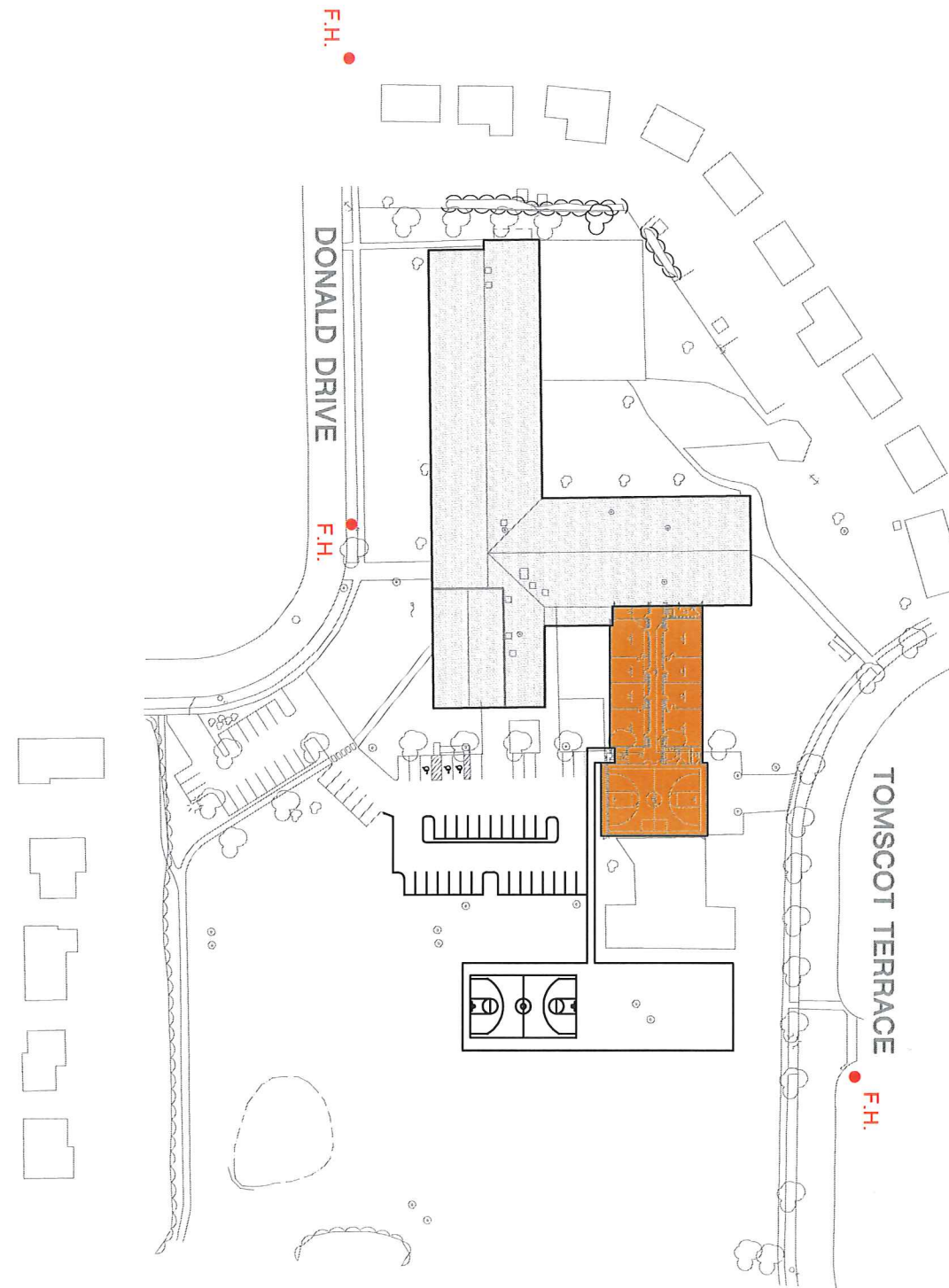
Steven A. Kieckhafer, AIA
Architect

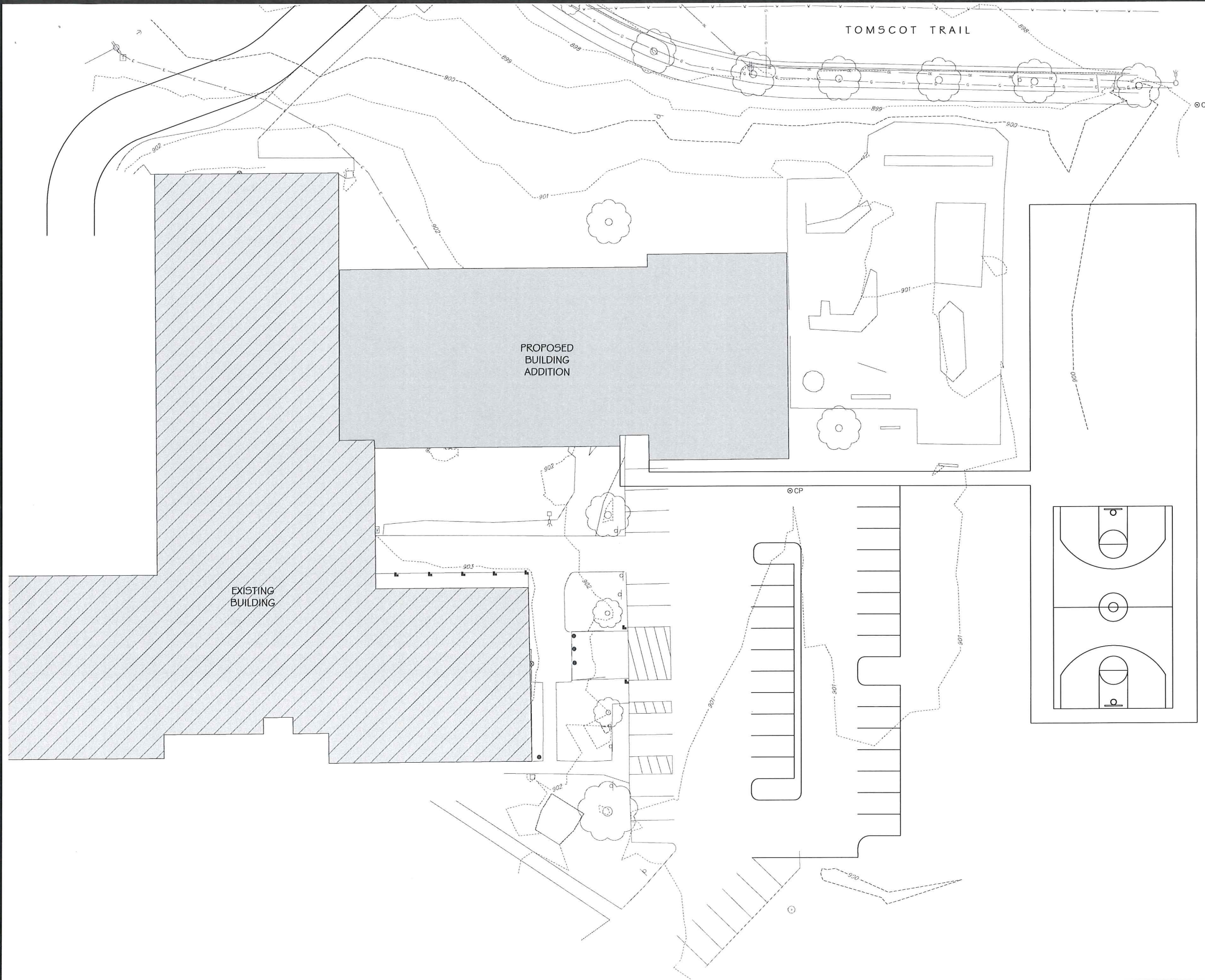




Location Map







CALL DIGGERS HOTLINE
1-800-242-8511
TOLL FREE

WIS. STATUTE 182.0175 (1974)
 REQUIRES MIN. OF 3 WORK DAYS
 NOTICE BEFORE YOU EXCAVATE

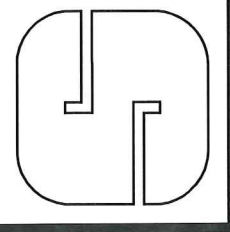
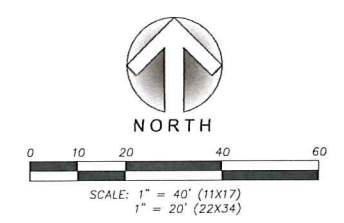
MARK	REVISION	DATE	BY
Engineer: BDB	Checked By: MW	Scale: AS SHOWN	
Technician: MW	Date: JUNE 2015	Field BK	Pg.

PROJECT No. 115.0449.30

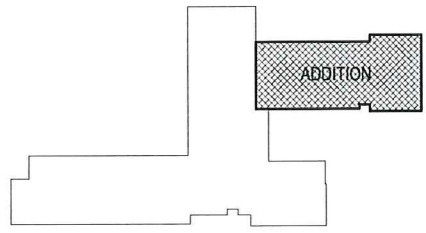
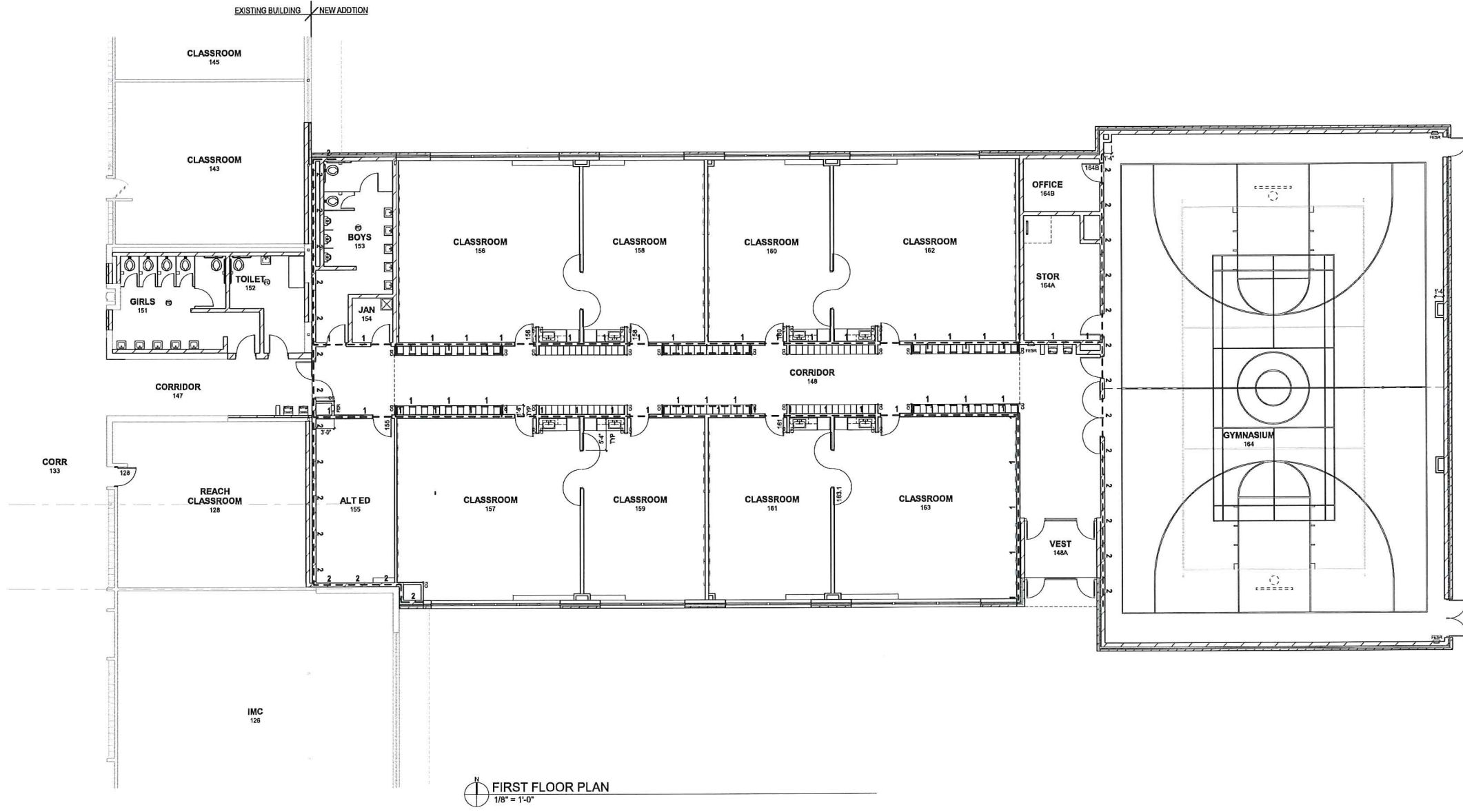
SANDBURG ELEMENTARY
GRADING & EROSION CONTROL PLAN

MADISON, WISCONSIN
 5010 VOGES ROAD
 MADISON, WISCONSIN 53718
 608-838-0444 | www.snyder-associates.com

SNYDER & ASSOCIATES, INC.



P:\PROJECTS\2015 Project\115.0449 Sandburg Elementary\Drawings\115.0449.30 Sandburg Elementary Erosion.dwg



NOT FOR CONSTRUCTION
© Plunkett Rajsich Architects, LLP

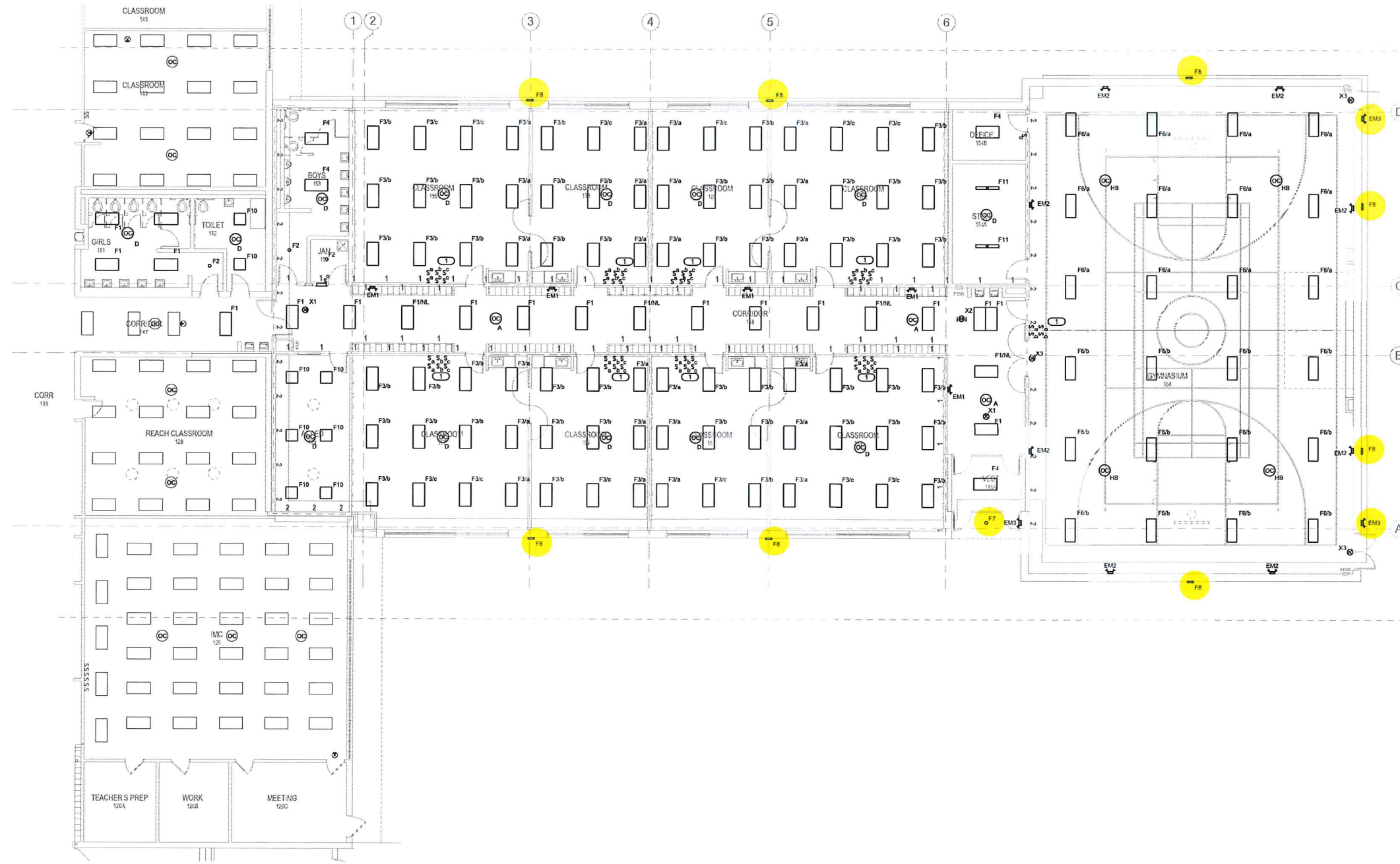
Drawn By: KTB
Date: 07-13-15
Job No.: 140248-09
Sheet No.: A201

**Madison Metropolitan School District
3rd Addition & Interior Renovation - Sandburg Elementary School**
4114 Donald Dr., Madison, WI 53704



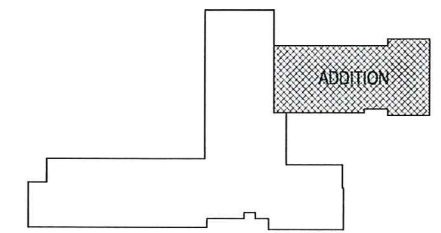
209 south water street milwaukee, wisconsin 53204 414.350.5000
3310 crossroads drive suite 2000 madison, wisconsin 53718 608.240.9900
1613 fujiwara road suite 3 sarasota, florida 34236 941.348.8618
intelligent designs. inspired results. | www.praarch.com

7/14/2015 3:29:21 PM C:\Revit\Local Files\MEP\15_151464_03_Sandburg Elem_Central_ambdome.rvt



KEYNOTES: **C**
 1. SWITCHES ARE TAGGED IN Pairs FOR MULTILEVEL SWITCHING. SWITCHES SHALL SWITCH FIXTURES AS TAGGED.

1 FIRST FLOOR PLAN - LIGHTING
 1/8" = 1'-0"



KJW ENGINEERING CONSULTANTS
 80 WEST BROADWAY, SUITE 112
 MADISON, WISCONSIN 53704
 TEL: 608.224.8811 FAX: 608.224.8811
 WWW.KJW.COM
 PROJECT #: 15044-03

© 2015 KJW ENGINEERING CONSULTANTS. ALL RIGHTS RESERVED. THIS DOCUMENT AND ALL DATA ARE THE EXCLUSIVE PROPERTY OF KJW ENGINEERING CONSULTANTS AND SHALL NOT BE REPRODUCED OR TRANSMITTED IN ANY FORM OR BY ANY MEANS, ELECTRONIC OR MECHANICAL, INCLUDING PHOTOCOPYING, RECORDING, OR BY ANY INFORMATION STORAGE AND RETRIEVAL SYSTEM, WITHOUT THE EXPRESS WRITTEN PERMISSION OF KJW ENGINEERING CONSULTANTS.

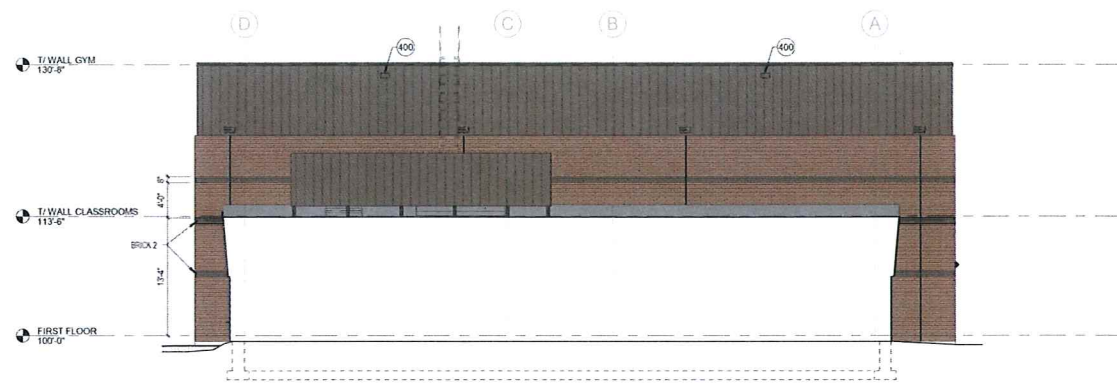
REFERENCE SCALE IN INCHES
 1" = 1'-0"

NOT FOR CONSTRUCTION
 © Plunkett Ranssch Architects, LLP

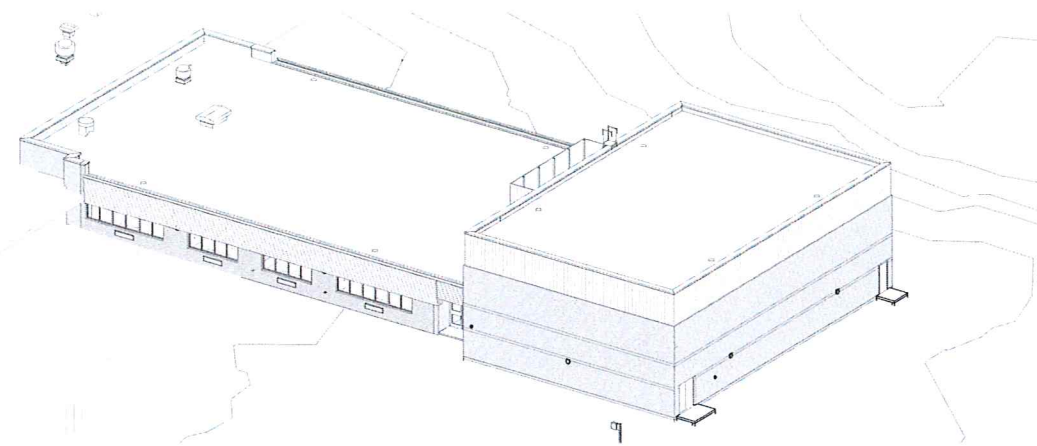
Revisions
Drawn By: Author
Date: 07-06-15
Job No.: 140248-09
Sheet No.: EL201

Madison Metropolitan School District
3rd Addition & Interior Renovation - Sandburg Elementary School
 4114 Donald Dr., Madison, WI 53704

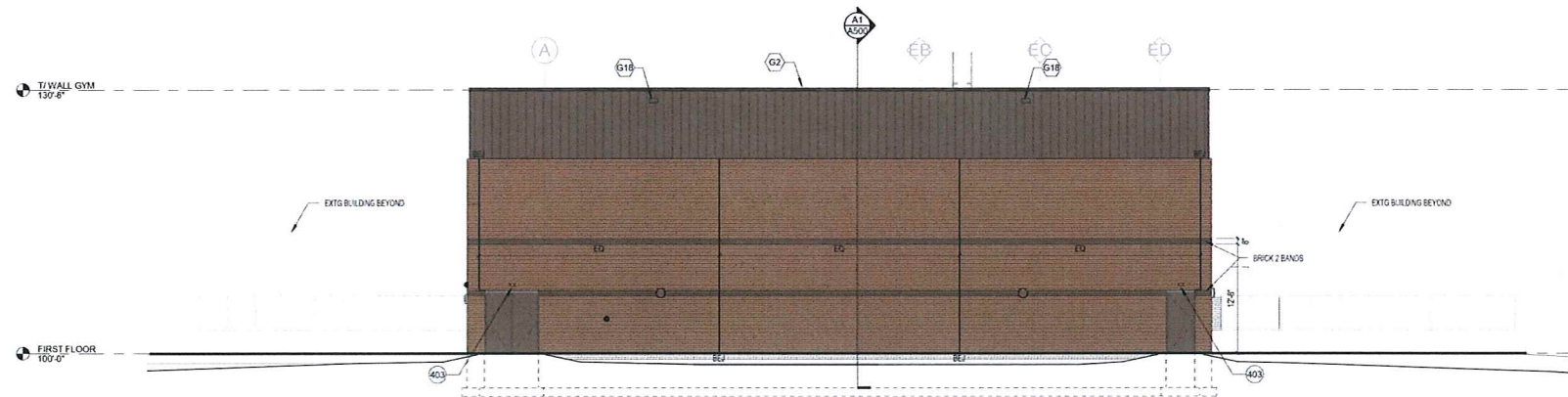
pran
PLUNKETT RANSCH ARCHITECTS, LLP
 208 South Water Street Milwaukee, Wisconsin 53204 414.359.2040
 2310 Covada Drive Suite 2000 Madison, Wisconsin 53718 608.240.9900
 1615 Franklin Road Suite 3 Sarasota, Florida 34236 941.343.3518
 intelligent designs. inspired results. | www.pranarch.com



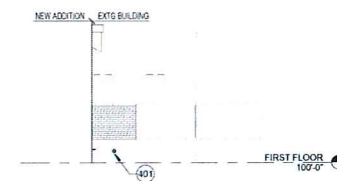
A1 WEST ELEVATION
A400 1/8" = 1'-0"



A4 AERIAL PERSPECTIVE
A400



B1 EAST ELEVATION
A400 1/8" = 1'-0"

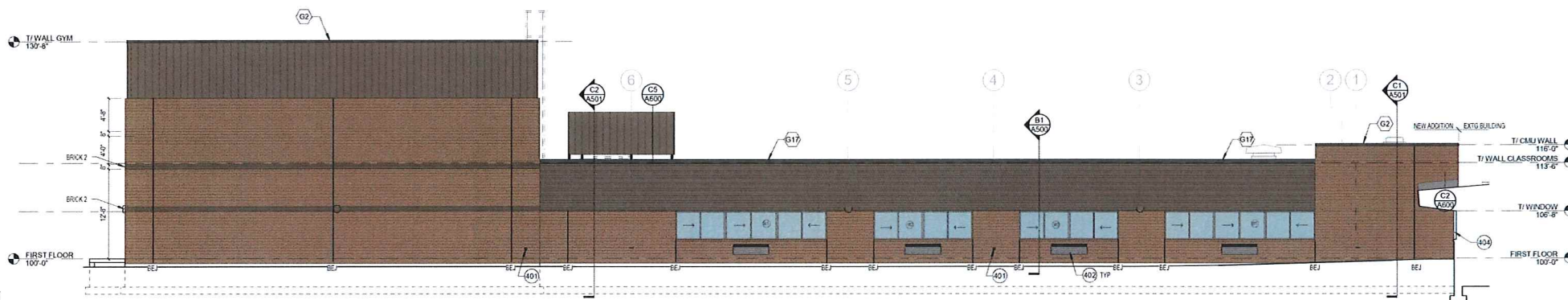


B5 EXTG BUILDING EAST ELEVATION
A400 1/8" = 1'-0"

EXTERIOR FINISH PATTERNS		EXTERIOR ELEVATIONS - GENERAL NOTES	
[Pattern]	BRICK 1 FIELD COLOR TO MATCH EXTG	A	PAINT ALL EXPOSED STEEL DETAILS TO MATCH ADJACENT MASONRY COLOR
[Pattern]	BRICK 2 (ACCENT COLOR)	B	TRIM ALL EXTERIOR LIGHTING FIXTURES, OUTLETS, HOSE BIBBS AND ALL OTHER SIDING PENETRATIONS WITH 1/4" FIBER CEMENT TRIM (TYP)
[Pattern]	FIBER CEMENT SIDING COLOR TO MATCH EXTG REDWOOD SIDING	C	REFER TO SHEET A500 FOR WINDOW FRAME ELEVATIONS
[Pattern]	VERTICAL METAL PANELS COLOR TO MATCH EXTG REDWOOD SIDING	D	SEALANT COLORS TO MATCH ADJACENT FINISHED SURFACES
		E	FIBER CEMENT COLOR TO BE REDWOOD STAIN

NOTE #	EXTERIOR ELEVATION NOTE
400	RELIEF SCUPPER, SEE DETAIL A3 A800
401	ROOF DRAIN OUTLET W/ SPLASH BLOCK BELOW
402	LOUVER, SEE MECHANICAL DRAWINGS FOR SIZE
403	EXTERIOR DOOR NUMBER TO MATCH EXISTING DOOR NUMBERING TYPE, FONT AND SIZE. VERIFY NUMBER WITH OWNER
404	3/4" 2 HOUR FIRE RATED MASONRY EXPANSION JOINT

KEYNOTE LEGEND - CONSTRUCTION TYPES	
TAG	CONSTRUCTION DESCRIPTION
G1	METAL FASO SYSTEM METAL GRAVEL STOP ON TREATED 2x WOOD BLOCKING
G2	METAL COPING SYSTEM METAL COPING ON TREATED 2x WOOD BLOCKING
G17	1/2" WIDE RELIEF SCUPPER NOTCH THROUGH GRAVEL STOP
G18	RELIEF SCUPPER, SEE DETAIL A3 A800



D1 NORTH ELEVATION
A400 1/8" = 1'-0"



E1 SOUTH ELEVATION
A400 1/8" = 1'-0"

8/12/2015 9:25:46 AM C:\PRA-RAC\Local Project Files\140248-09_Sandburg Elementary School_v15_central_mdb\obj\prt



©2015 Flunke & Royce Architects, LLP - August 12, 2015 - # 140248-0x



TWP LED LED Wall Luminaire



F8

Catalog Number

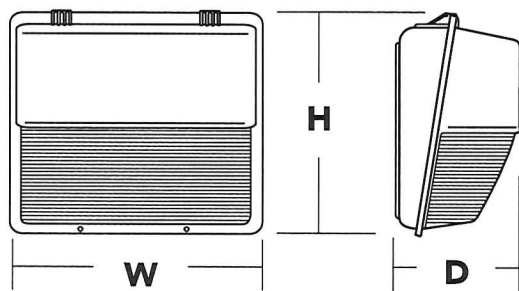
Notes

Type

Hit the Tab key or mouse over the page to see all interactive elements.

Specifications

- Width:** 16-1/8" (41.0 cm)
- Height:** 15-1/2" (39.4 cm)
- Depth:** 7-3/4" (19.7 cm)
- Weight:** 15 lbs (6.8kg)



Introduction

The popular TWP luminaire is now available with LED technology. Cast in a traditional dayform, the TWP LED offers a classic appearance and is powered by advanced LEDs. A one-piece polycarbonate cover delivers enhanced durability and is vandal resistant, making the TWP LED ideal for lower mounting heights or high-traffic areas.

The new TWP LED luminaire is powerful yet energy efficient, capable of replacing up to a 250W metal halide luminaire while saving up to 77% in energy costs. Offering an expected service life of more than 20 years, the TWP LED eliminates frequent lamp and ballast replacements associated with traditional technologies.

Ordering Information

EXAMPLE: TWP LED 30C 700 50K T3M MVOLT DDBXD

TWP LED								
Series	Performance Package	Distribution	Voltage	Control Options	Other Options	Finish (required)		
TWP LED	LEDs 10C 10 LEDs (one engine) 20C 20 LEDs (two engines) 30C 30 LEDs (one engine) Drive current 700 700 mA Color temperature 50K 5000 K (standard) 40K 4000 K (optional)	T3M Type III Medium	MVOLT ¹ 120 ¹ 208 ¹ 240 ¹ 277 ¹ 347 ² 480 ²	Shipped installed DMG 0-10V dimming driver (no controls) PE Photoelectric cell, button type ³	Shipped installed SF Single fuse (120, 277, 347V) ⁴ DF Double fuse (208, 240, 480V) ⁴ TP Tamper proof screws NOM NOM Certified SPD Separate surge protection ⁵ Shipped separately WG Wire guard ⁶	DDBXD Dark bronze DBLXD Black DWHXD White DDBTXD Textured dark bronze DBLBXD Textured black DWHGXD Textured white		

Stock configurations are offered for shorter lead times:

Standard Part Number	Stock Part Number
TWP LED 10C 700 50K T3M MVOLT DDBXD	TWP LED 10C 50K
TWP LED 20C 700 50K T3M MVOLT DDBXD	TWP LED 20C 50K
TWP LED 30C 700 50K T3M MVOLT DDBXD	TWP LED 30C 50K

Accessories

Ordered and shipped separately.

TWPGW U Wire guard accessory⁷

NOTES

- 1 MVOLT driver operates on any line voltage from 120-277V (50/60 Hz). Specify 120, 208, 240 or 277 options only when ordering with fusing (SF, DF options) or photocontrol (PE).
- 2 Not available with 10C option.
- 3 Must specify voltage; not available with MVOLT or 480 voltage options.
- 4 Single fuse (SF) requires 120, 277 or 347 voltage option. Double fuse (DF) requires 208, 240 or 480 voltage option.
- 5 See the electrical section on page 2 for more details.
- 6 Also available as a separate accessory; see Accessories information at left.
- 7 Requires field modification (only when ordered as a separate accessory).



Performance Data

Lumen Output

Lumen values are from photometric tests performed in accordance with IESNA LM-79-08. Data is considered to be representative of the configurations shown, within the tolerances allowed by Lighting Facts. Contact factory for performance data on any configurations not shown here.

LEDs	Drive Current (mA)	Performance Package	System Watts	Dist. Type	40K (4000 K, 70 CRI)					50K (5000 K, 65 CRI)				
					Lumens	B	U	G	LPW	Lumens	B	U	G	LPW
10C (10 LEDs)	700	10C 700 --K	26 W	T3M	1,478	0	3	2	57	1,614	0	3	2	62
20C (20 LEDs)	700	20C 700 --K	45 W	T3M	2,877	0	3	3	64	3,149	0	3	3	70
30C (30 LEDs)	700	30C 700 --K	67 W	T3M	4,157	0	3	3	62	4,377	0	3	3	65

Lumen Ambient Temperature (LAT) Multipliers

Use these factors to determine relative lumen output for average ambient temperatures from 0-40°C (32-104°F).

Ambient	Lumen Multiplier
0°C	1.02
10°C	1.01
20°C	1.00
25°C	1.00
30°C	1.00
40°C	0.98

Projected LED Lumen Maintenance

Data references the extrapolated performance projections for the **TWP LED 30C 700** platform in a **25°C ambient**, based on 10,000 hours of LED testing (tested per IESNA LM-80-08 and projected per IESNA TM-21-11).

To calculate LLF, use the lumen maintenance factor that corresponds to the desired number of operating hours below. For other lumen maintenance values, contact factory.

Operating Hours	0	25,000	50,000	100,000
Lumen Maintenance Factor	1.0	0.97	0.96	0.94

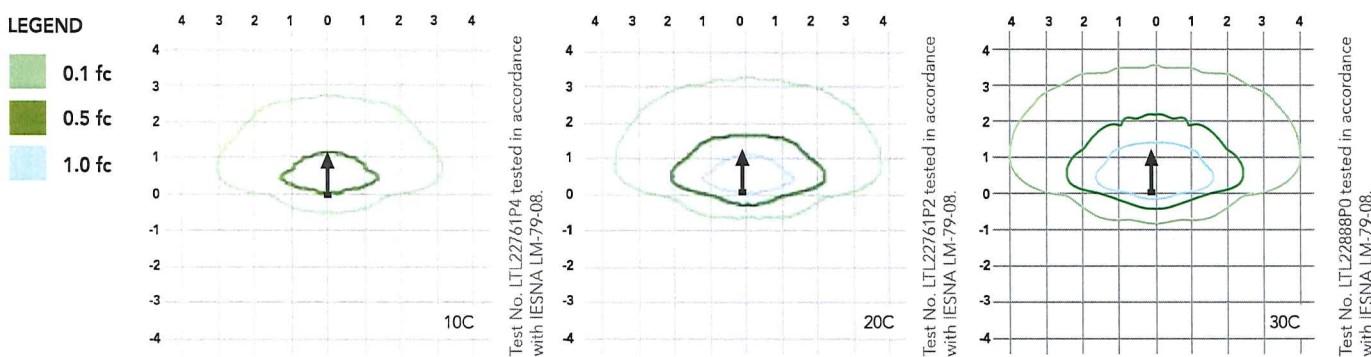
Electrical Load

LEDs	Drive Current (mA)	System Watts	Current (A)					
			120V	208V	240V	277V	347V	480V
10C	700	26 W	0.24	0.14	0.12	0.10	-	-
20C	700	45 W	0.42	0.24	0.21	0.18	0.14	0.10
30C	700	67 W	0.62	0.36	0.31	0.27	0.21	0.16

Photometric Diagrams

To see complete photometric reports or download .ies files for this product, visit Lithonia Lighting's [TWP LED homepage](#).

Isofootcandle plots for the TWP LED --- 700 50K T3M. Distances are in units of mounting height (15').



FEATURES & SPECIFICATIONS

INTENDED USE

The energy savings, long life and easy-to-install design of the TWP LED make it the smart choice for building-mounted doorway and pathway illumination for nearly any facility.

CONSTRUCTION

Die-cast aluminum rear housing has an impact-resistant, UV-stabilized polycarbonate front housing and refractor that is fully gasketed. Modular design allows for ease of maintenance. The LED driver is mounted to the front casting to thermally isolate it from the light engine for low operating temperature and long life. Housing is completely sealed against moisture and environmental contaminants.

FINISH

Exterior parts are protected by a zinc-infused Super Durable TGIC thermoset powder coat finish that provides superior resistance to corrosion and weathering. A tightly controlled multi-stage process ensures a minimum 3 mils thickness for a finish that can withstand extreme climate changes without cracking or peeling. Available in textured and non-textured finishes.

OPTICS

Protective polycarbonate lens covers the light engine's precision-molded proprietary acrylic lenses. Light engines are available in 5000 K (65 min. CRI) configurations.

ELECTRICAL

Light engine(s) consist of 10 or 30 high-efficiency LEDs mounted to a metal-core circuit board and integral aluminum heat sink to maximize heat dissipation and promote long life (L94/100,000 hrs at 25°C). The electronic driver has a power factor of >90%, THD <20%, and a minimum 2.5 KV

surge rating. When ordering the SPD option, a separate surge protection device is installed within the luminaire which meets a minimum Category C low operation (per ANSI/IEEE C62.41.2).

INSTALLATION

Top 3/4" threaded wiring access. Back access through removable 3/4" knockout. Feed-thru wiring can be achieved by using a conduit tee. Mount on any flat, vertical surface.

LISTINGS

UL listed for wet locations. Rated for -40°C minimum ambient.

WARRANTY

Five year limited warranty. Full warranty terms located at www.acuitybrands.com/CustomerResources/Terms_and_conditions.aspx.

Note: Actual performance may differ as a result of end-user environment and application. All values are design or typical values, measured under laboratory conditions at 25 °C. Specifications subject to change without notice.



PROMO CODE: EMERALD10* **10% OFF** Ends May 8th **SHOP NOW!**

*Receive 10% off your purchase with promotion code EMERALD10. Offer expires 5/8/2015 at 11:59pm CDT. Excludes Poles & Bullhorns and Cree® LED Lamps. One-time use only. Maximum discount of \$2,000.

Home / Indoor Lighting / Exit & Emergency



**Cold Location LED
Emergency Light, Wet-
listed, Dark Bronze**

\$84.99

SKU: E-XML4CWZ

Quantity

ADD TO CART

ADD TO QUOTE

OUT OF STOCK
Available 5/25/2015

RATINGS

WRITE A REVIEW

ASK A QUESTION

DETAILS

SPECS & GUIDE

ACCESSORIES

REVIEWS

Q&A

OVERVIEW

Wet-listed, cold location LED emergency light in dark bronze with input of 120V or 277V

FEATURES

- Die-cast aluminum housing with durable powder-coated finish
- Polycarbonate prismatic refractor
- Charge/power on indicator LED
- Push-to-test
- Sealed, 4.8V maintenance-free nickel cadmium battery provides up to 90 minutes of emergency operation
- Battery recharges within 24 hours via internal solid-state, two-rate charger
- Includes back plate for wall mount. Universal knockout pattern on back plate provides for easy installation over most standard junction boxes
- Fully gasketed
- Meets UL924, NFPA 101 Life Safety Code, NEC, OSHA codes
- 5-year limited warranty on housing and electronics

APPLICATIONS

For general purpose exit identification in indoor commercial, retail, or industrial applications.