

# 702 East Washington - Redevelopment

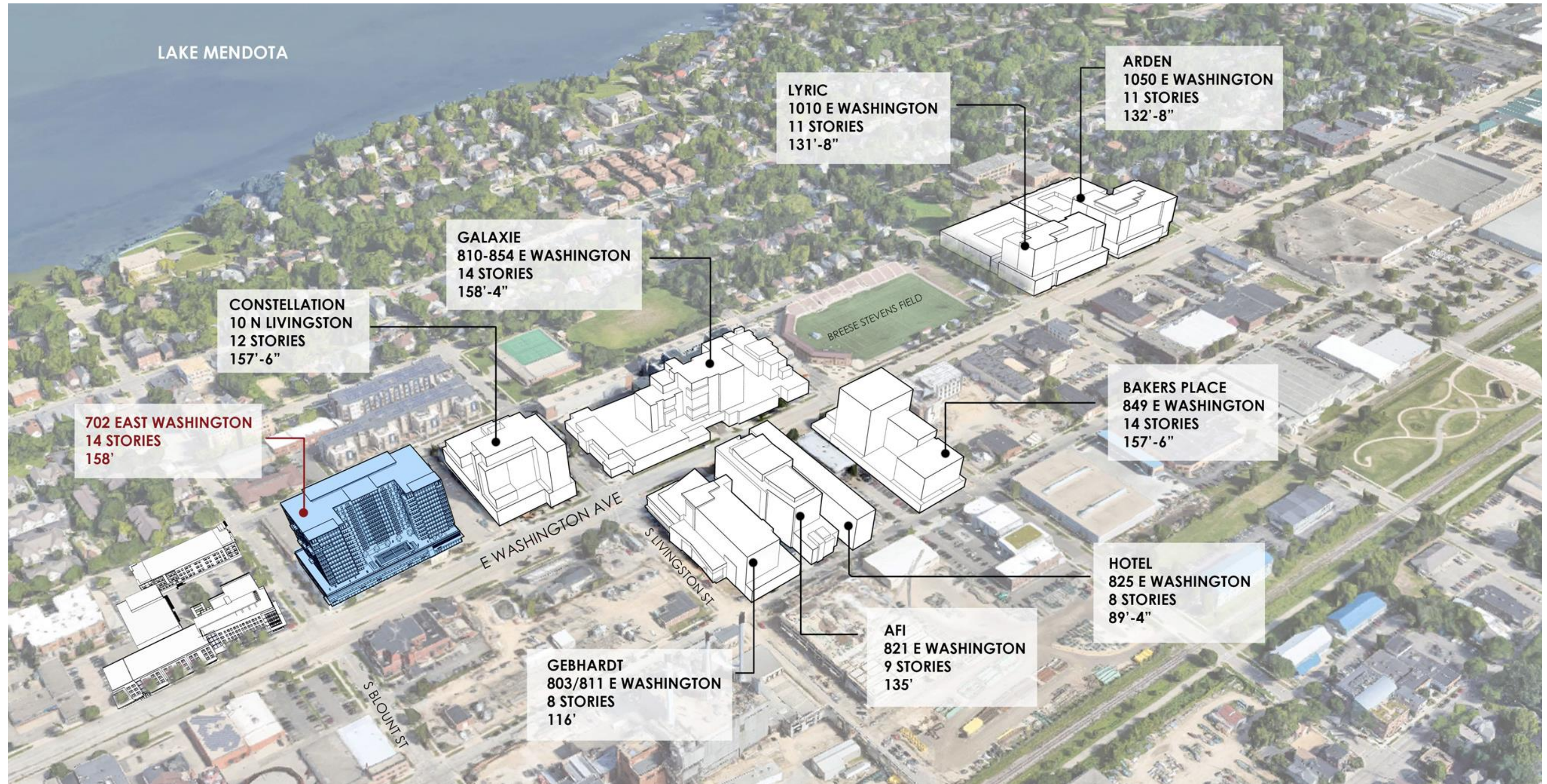
UDC Informational Submittal





# 702 East Washington - Redevelopment

UDC Informational Submittal

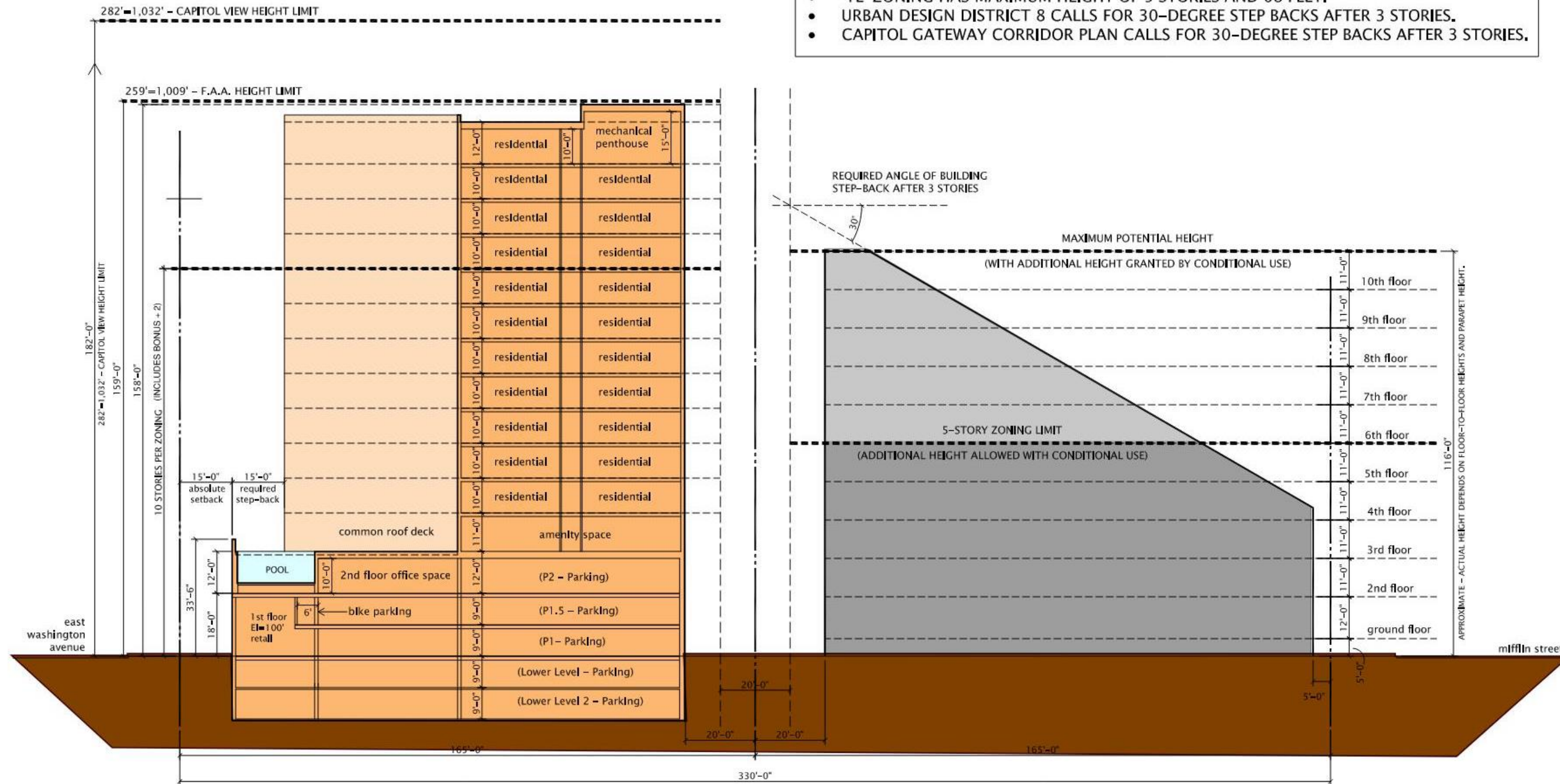




# 702 East Washington - Redevelopment

UDC Informational Submittal

- MIFFLIN STREET PARCEL HAS 740 EAST WASHINGTON ADDRESS
- PARCEL IS ZONED TRADITIONAL EMPLOYMENT (TE).
  - 'TE' ZONING HAS MAXIMUM HEIGHT OF 5 STORIES AND 68 FEET.
  - URBAN DESIGN DISTRICT 8 CALLS FOR 30-DEGREE STEP BACKS AFTER 3 STORIES.
  - CAPITOL GATEWAY CORRIDOR PLAN CALLS FOR 30-DEGREE STEP BACKS AFTER 3 STORIES.

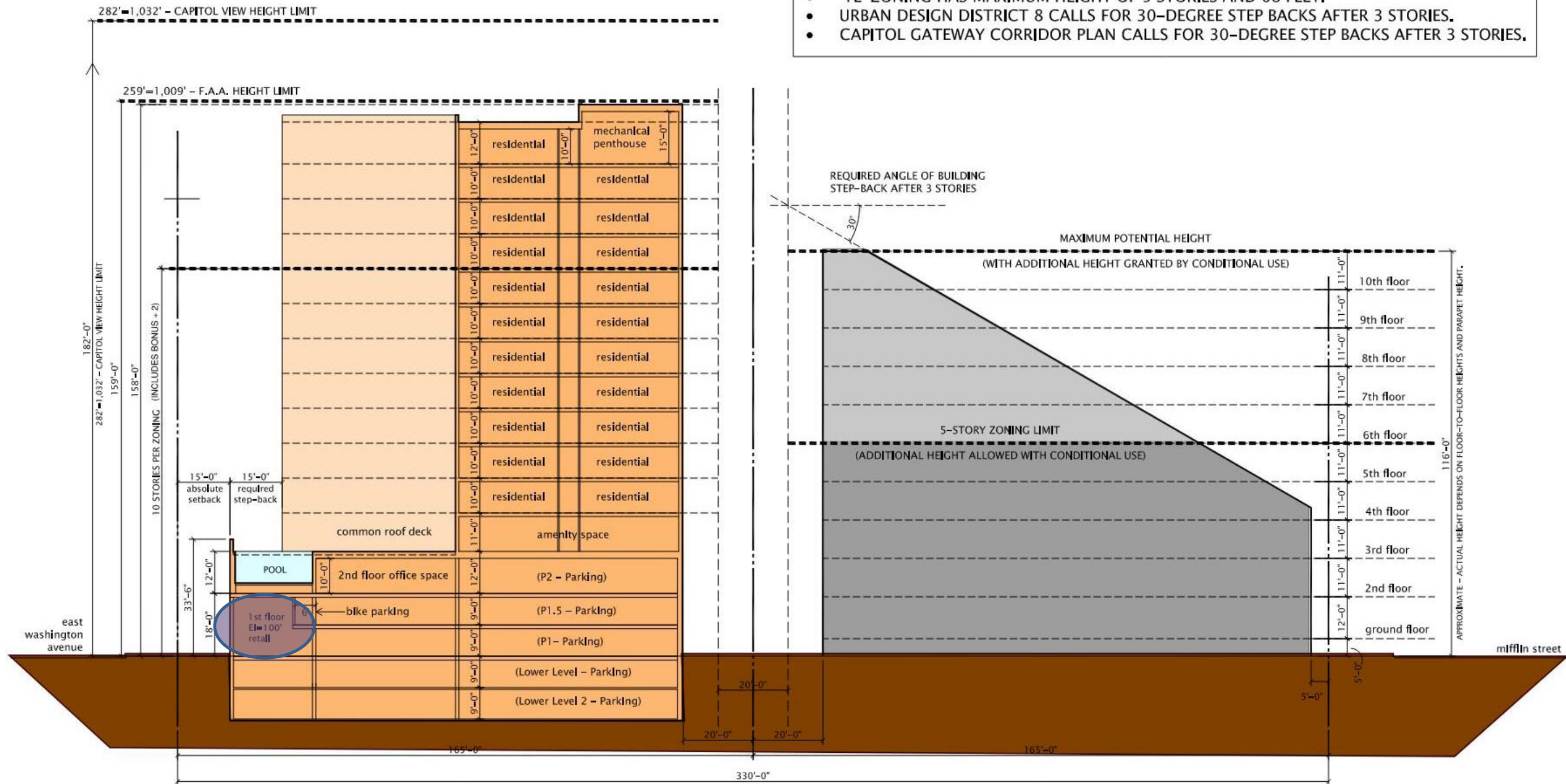


# 702 East Washington - Redevelopment

UDC Informational Submittal

MIFFLIN STREET PARCEL HAS 740 EAST WASHINGTON ADDRESS

- PARCEL IS ZONED TRADITIONAL EMPLOYMENT (TE).
- 'TE' ZONING HAS MAXIMUM HEIGHT OF 5 STORIES AND 68 FEET.
- URBAN DESIGN DISTRICT 8 CALLS FOR 30-DEGREE STEP BACKS AFTER 3 STORIES.
- CAPITOL GATEWAY CORRIDOR PLAN CALLS FOR 30-DEGREE STEP BACKS AFTER 3 STORIES.

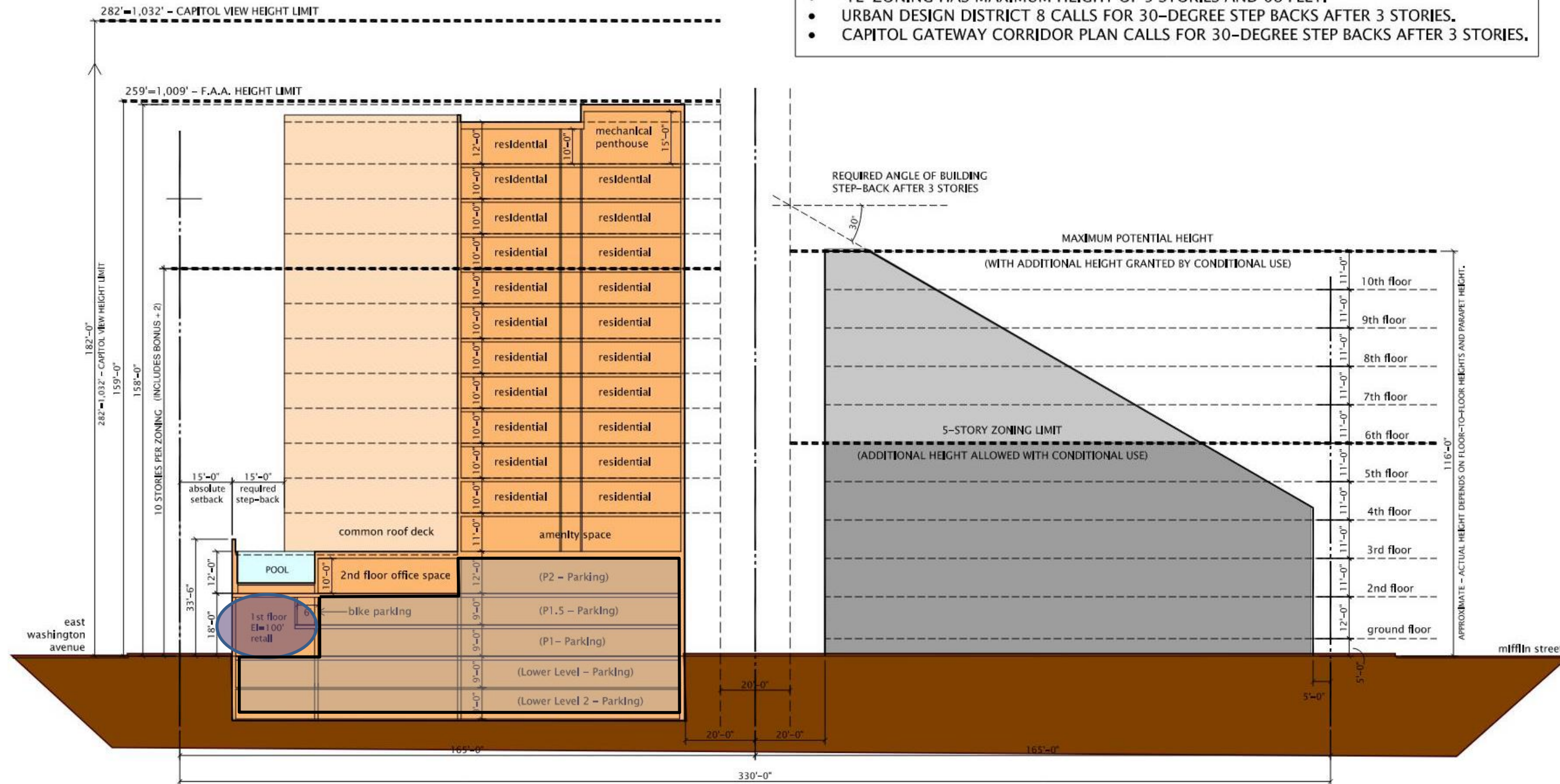




# 702 East Washington - Redevelopment

UDC Informational Submittal

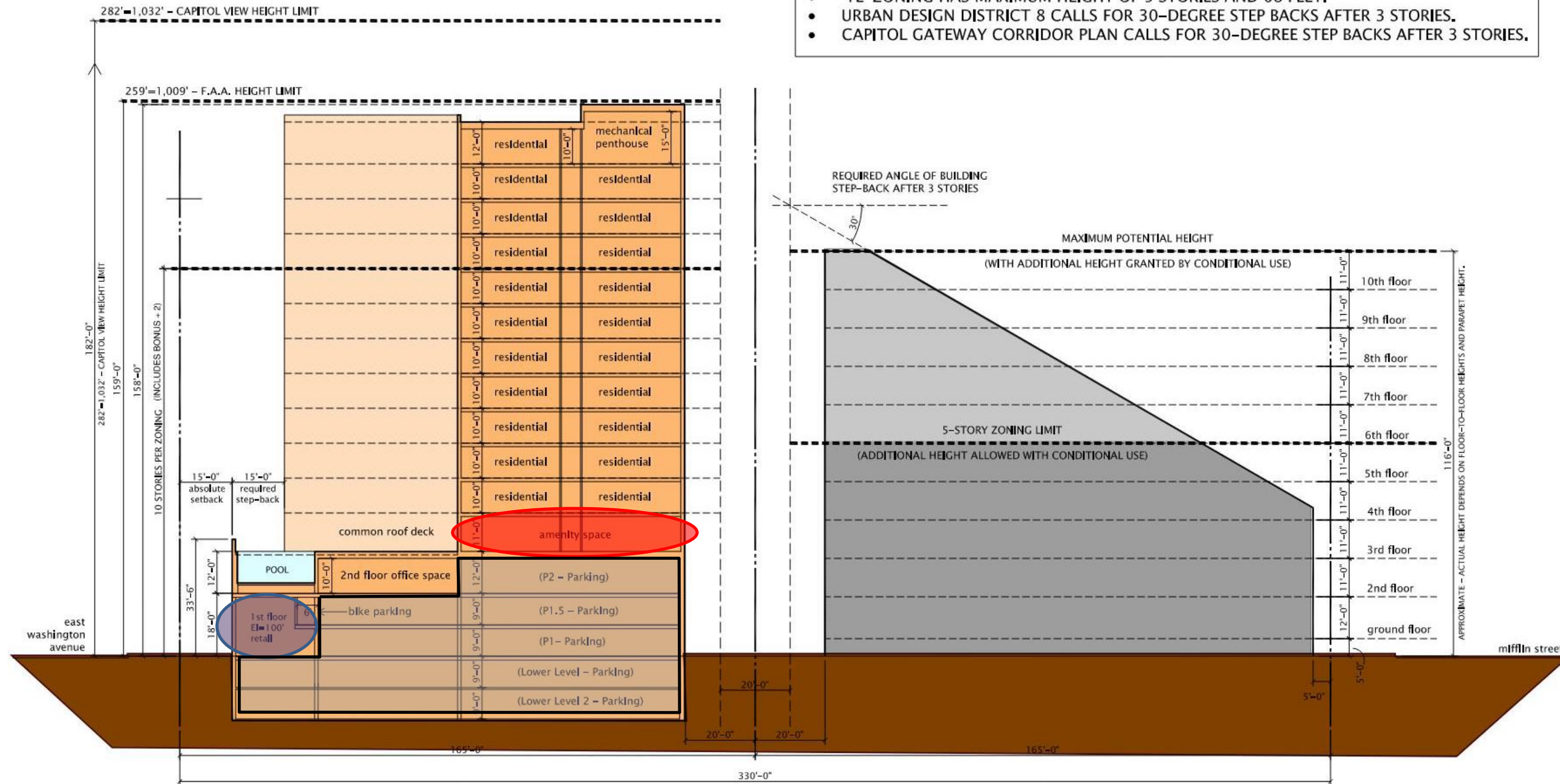
- MIFFLIN STREET PARCEL HAS 740 EAST WASHINGTON ADDRESS
- PARCEL IS ZONED TRADITIONAL EMPLOYMENT (TE).
  - 'TE' ZONING HAS MAXIMUM HEIGHT OF 5 STORIES AND 68 FEET.
  - URBAN DESIGN DISTRICT 8 CALLS FOR 30-DEGREE STEP BACKS AFTER 3 STORIES.
  - CAPITOL GATEWAY CORRIDOR PLAN CALLS FOR 30-DEGREE STEP BACKS AFTER 3 STORIES.



# 702 East Washington - Redevelopment

UDC Informational Submittal

- MIFFLIN STREET PARCEL HAS 740 EAST WASHINGTON ADDRESS
- PARCEL IS ZONED TRADITIONAL EMPLOYMENT (TE).
  - 'TE' ZONING HAS MAXIMUM HEIGHT OF 5 STORIES AND 68 FEET.
  - URBAN DESIGN DISTRICT 8 CALLS FOR 30-DEGREE STEP BACKS AFTER 3 STORIES.
  - CAPITOL GATEWAY CORRIDOR PLAN CALLS FOR 30-DEGREE STEP BACKS AFTER 3 STORIES.

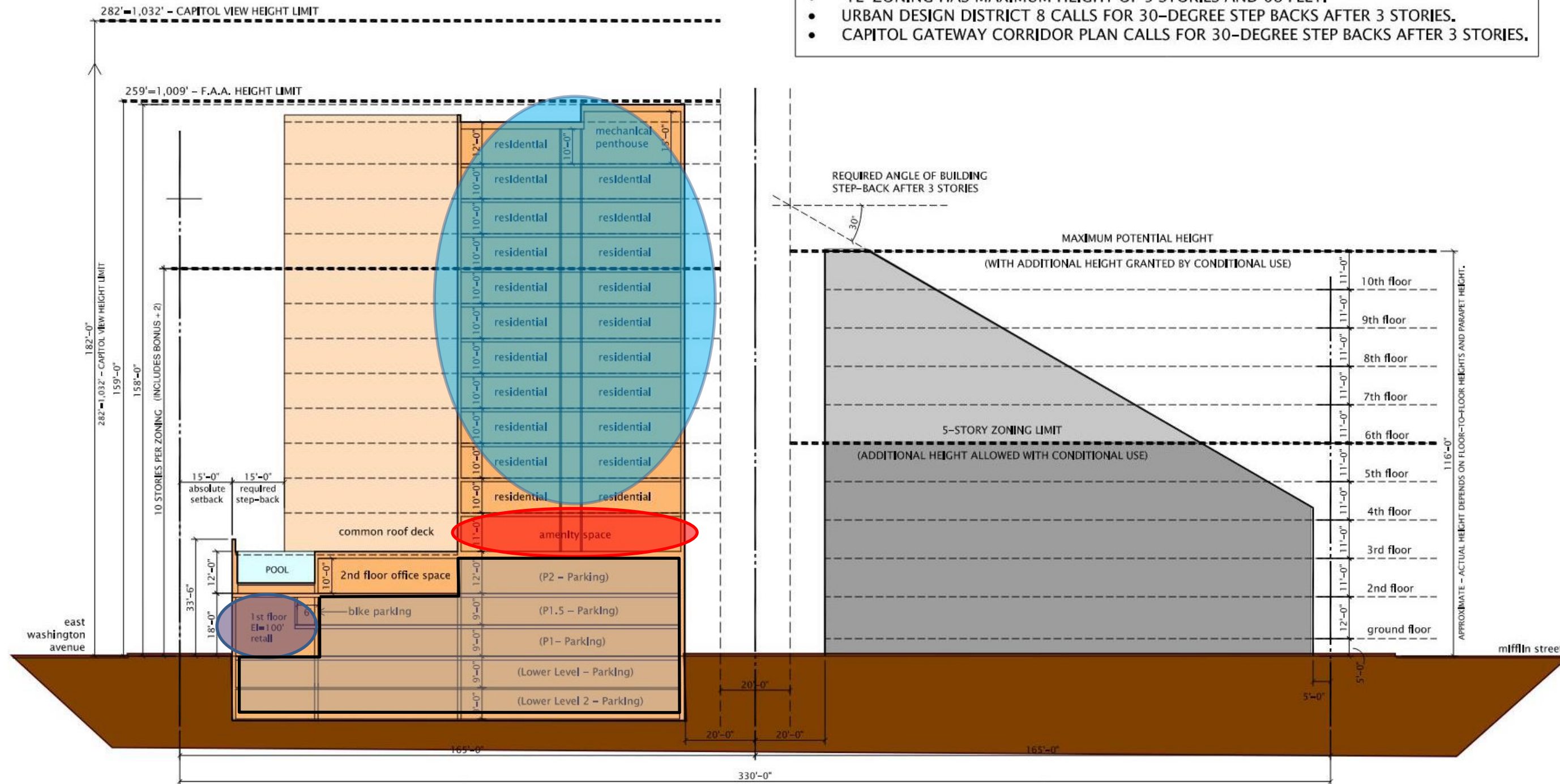




# 702 East Washington - Redevelopment

UDC Informational Submittal

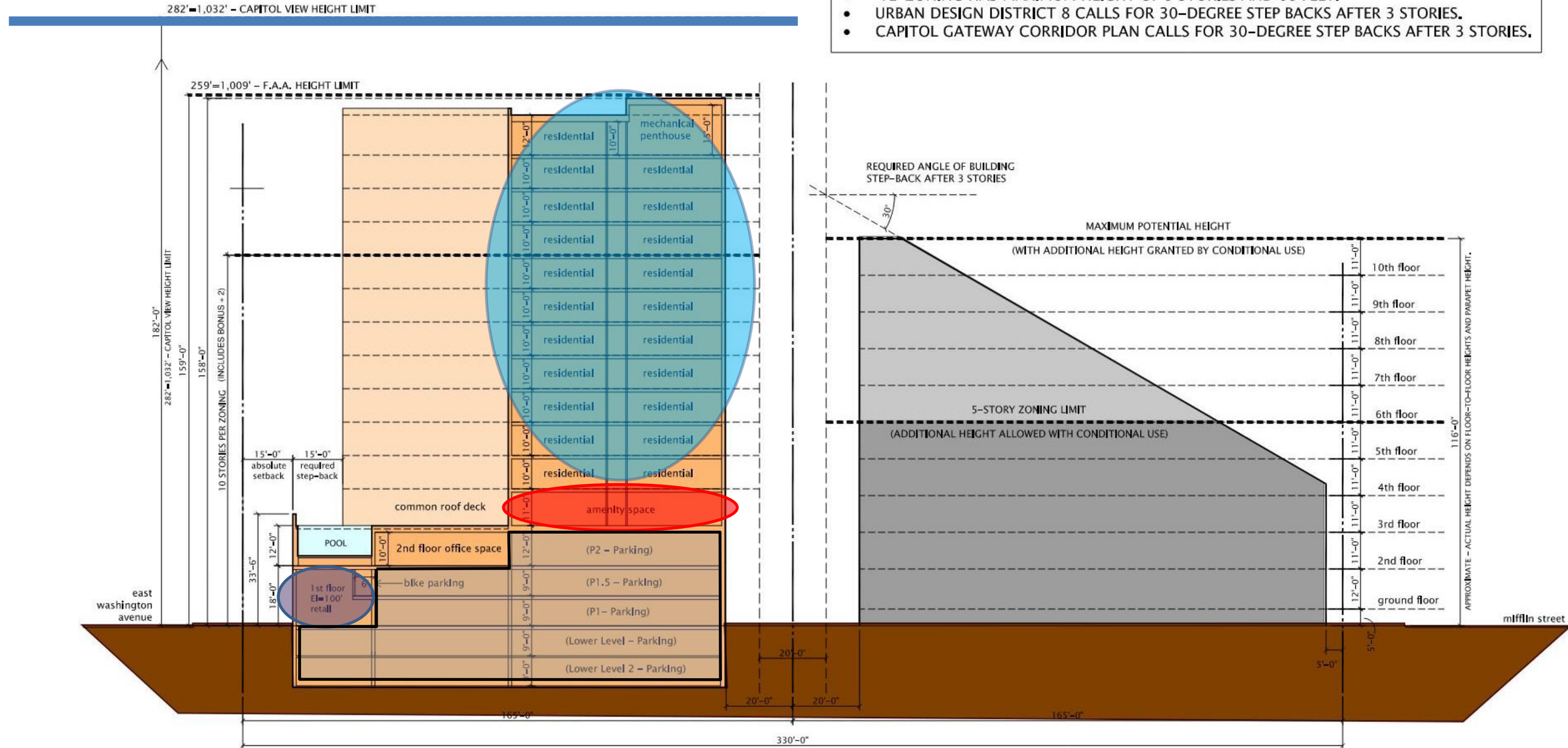
- MIFFLIN STREET PARCEL HAS 740 EAST WASHINGTON ADDRESS
- PARCEL IS ZONED TRADITIONAL EMPLOYMENT (TE).
  - 'TE' ZONING HAS MAXIMUM HEIGHT OF 5 STORIES AND 68 FEET.
  - URBAN DESIGN DISTRICT 8 CALLS FOR 30-DEGREE STEP BACKS AFTER 3 STORIES.
  - CAPITOL GATEWAY CORRIDOR PLAN CALLS FOR 30-DEGREE STEP BACKS AFTER 3 STORIES.



# 702 East Washington - Redevelopment

UDC Informational Submittal

- MIFFLIN STREET PARCEL HAS 740 EAST WASHINGTON ADDRESS
- PARCEL IS ZONED TRADITIONAL EMPLOYMENT (TE).
  - 'TE' ZONING HAS MAXIMUM HEIGHT OF 5 STORIES AND 68 FEET.
  - URBAN DESIGN DISTRICT 8 CALLS FOR 30-DEGREE STEP BACKS AFTER 3 STORIES.
  - CAPITOL GATEWAY CORRIDOR PLAN CALLS FOR 30-DEGREE STEP BACKS AFTER 3 STORIES.



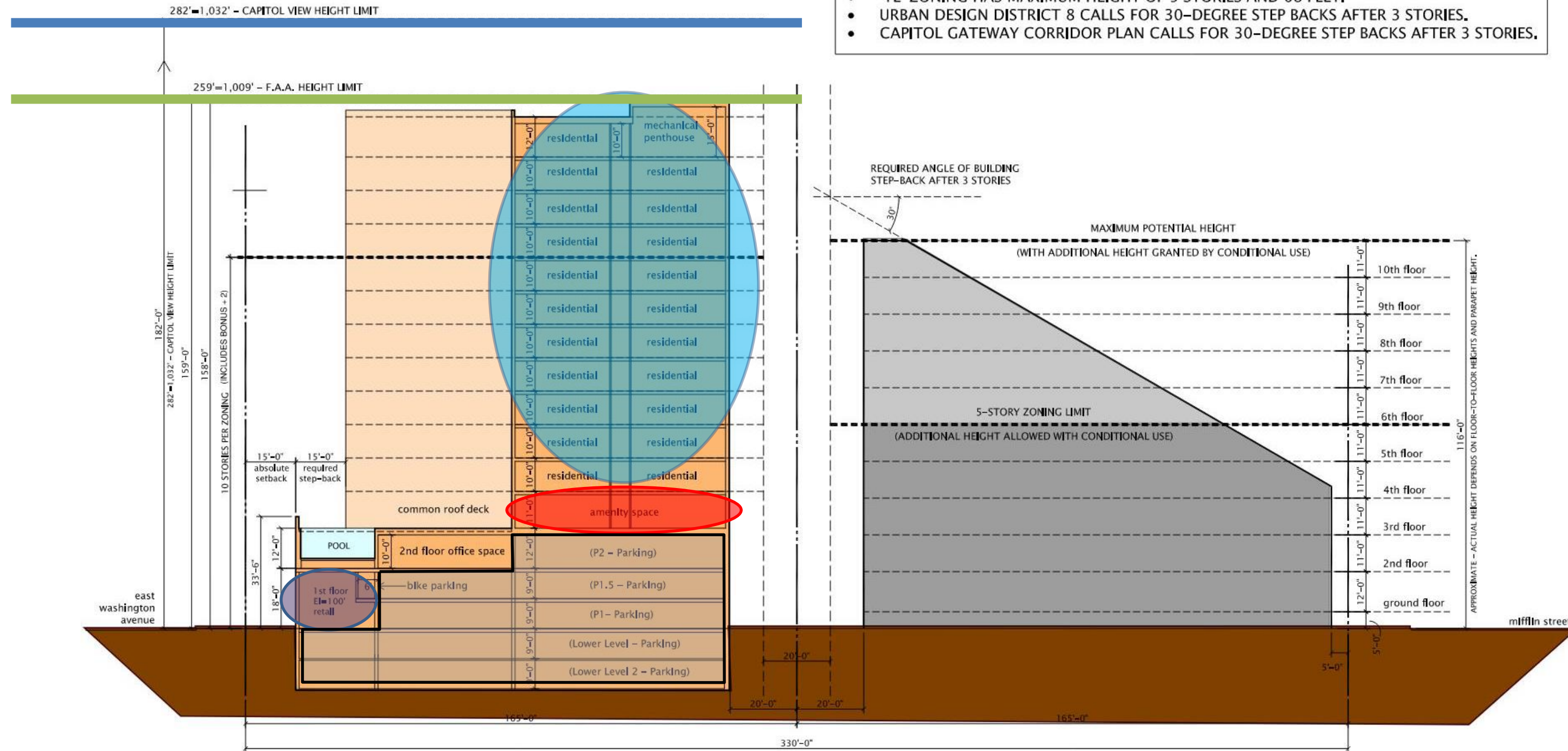


# 702 East Washington - Redevelopment

UDC Informational Submittal

MIFFLIN STREET PARCEL HAS 740 EAST WASHINGTON ADDRESS

- PARCEL IS ZONED TRADITIONAL EMPLOYMENT (TE).
- 'TE' ZONING HAS MAXIMUM HEIGHT OF 5 STORIES AND 68 FEET.
- URBAN DESIGN DISTRICT 8 CALLS FOR 30-DEGREE STEP BACKS AFTER 3 STORIES.
- CAPITOL GATEWAY CORRIDOR PLAN CALLS FOR 30-DEGREE STEP BACKS AFTER 3 STORIES.

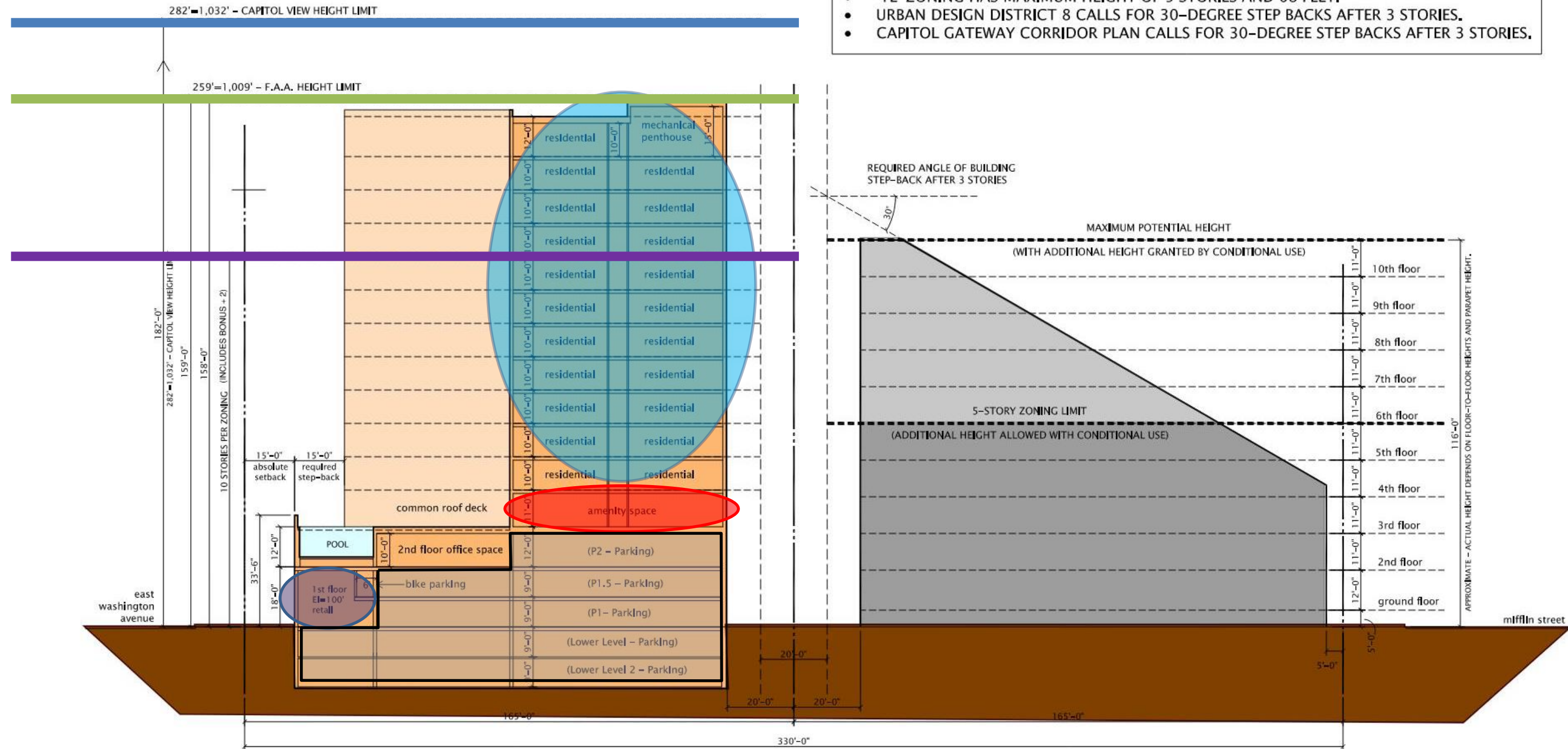




# 702 East Washington - Redevelopment

UDC Informational Submittal

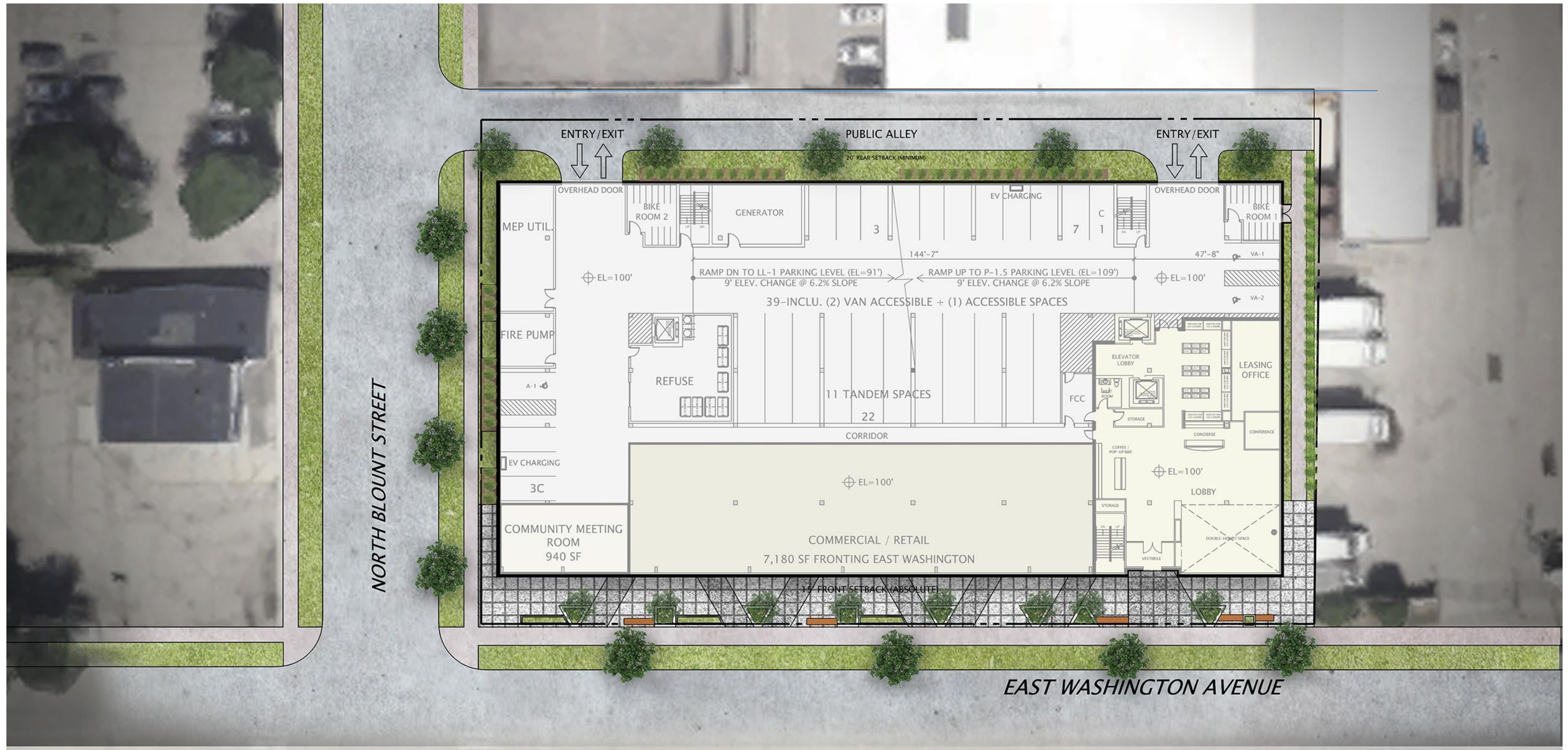
- MIFFLIN STREET PARCEL HAS 740 EAST WASHINGTON ADDRESS
- PARCEL IS ZONED TRADITIONAL EMPLOYMENT (TE).
  - 'TE' ZONING HAS MAXIMUM HEIGHT OF 5 STORIES AND 68 FEET.
  - URBAN DESIGN DISTRICT 8 CALLS FOR 30-DEGREE STEP BACKS AFTER 3 STORIES.
  - CAPITOL GATEWAY CORRIDOR PLAN CALLS FOR 30-DEGREE STEP BACKS AFTER 3 STORIES.





# 702 East Washington - Redevelopment

UDC Informational Submittal





# 702 East Washington - Redevelopment

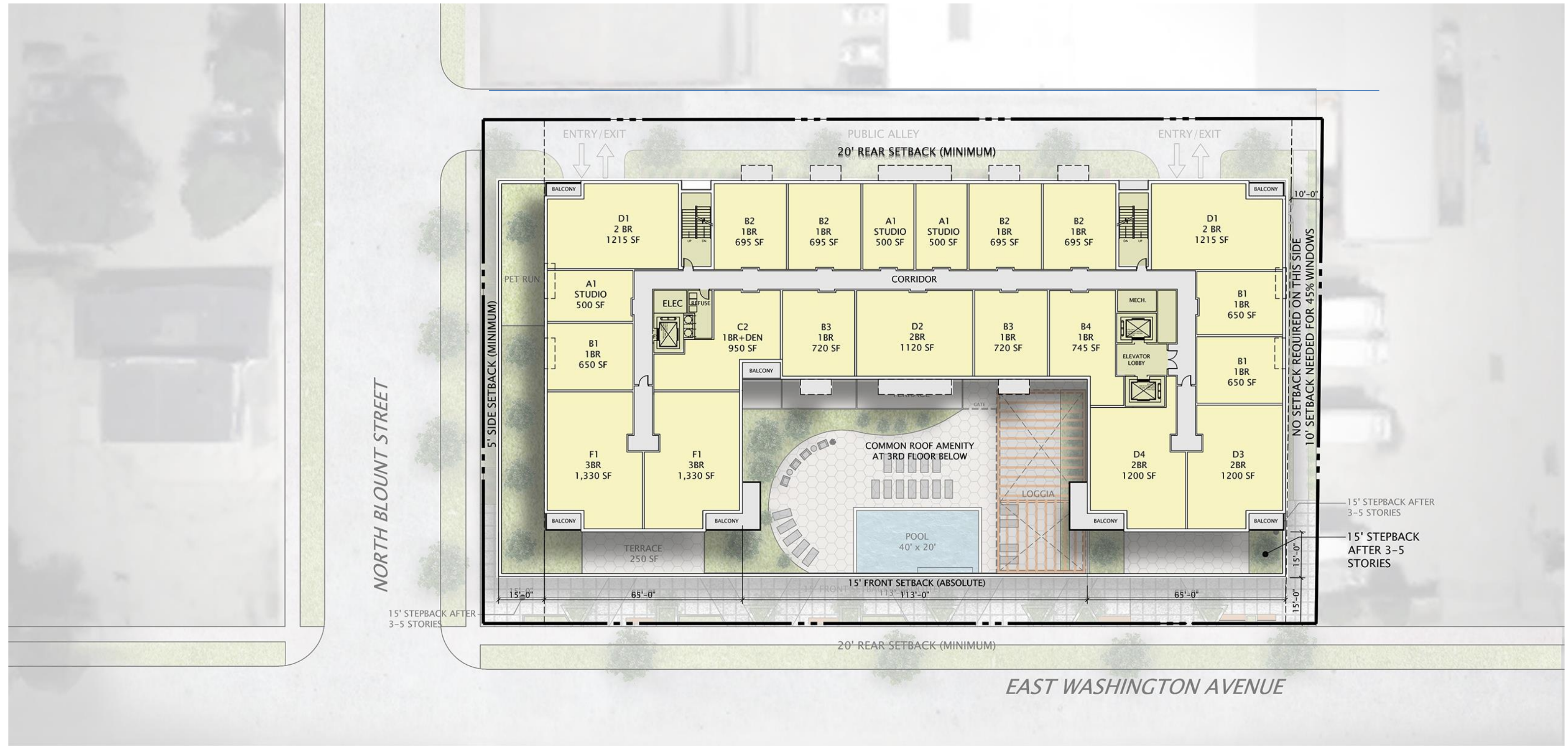
UDC Informational Submittal





# 702 East Washington - Redevelopment

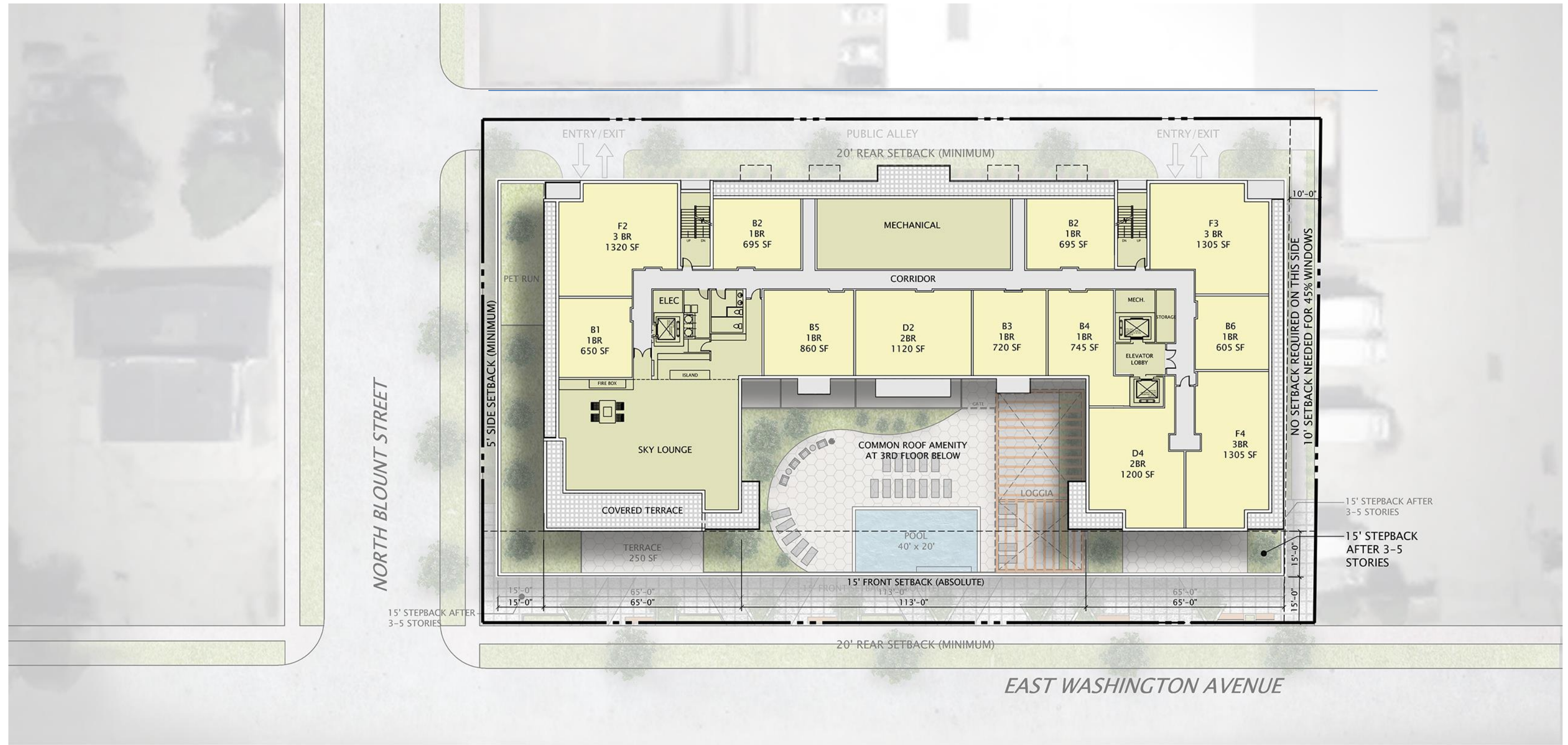
UDC Informational Submittal





# 702 East Washington - Redevelopment

UDC Informational Submittal

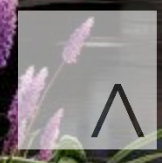






JLA  
ARCHITECTS





**JLA**  
ARCHITECTS









JLA  
ARCHITECTS





STOP

STOP

NO PARKING  
ANY TIME  
ANY DAY

NO STOPPING  
ANY TIME  
ANY DAY





STOP

STOP





7  
0  
2



JLA  
ARCHITECTS





LOBBY



JLA  
ARCHITECTS





SIGNAGE

SIGNAGE

SIGNAGE



JLA  
ARCHITECTS





**JLA**  
ARCHITECTS

**THANK YOU**

**JLA-AP.COM**

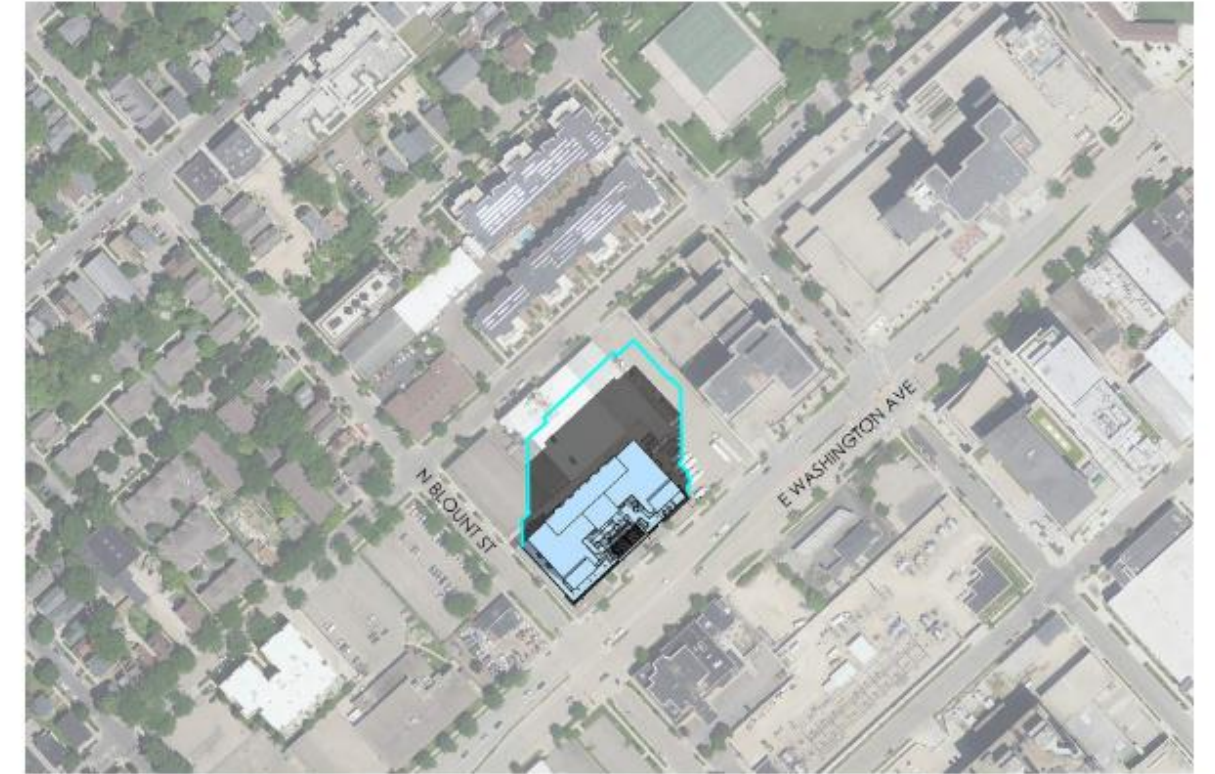


# 702 East Washington - Redevelopment

UDC Informational Submittal



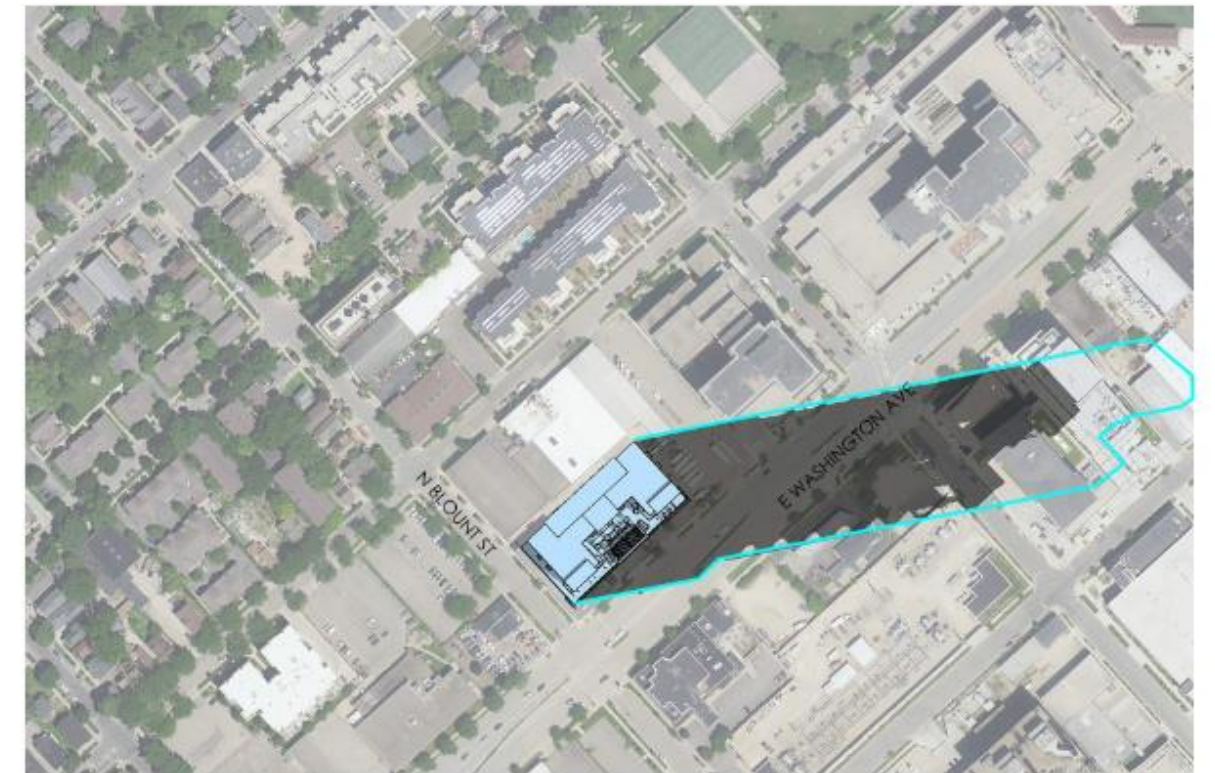
MARCH 14 | 9:00 AM



MARCH 14 | 12:00 PM



MARCH 14 | 3:00 PM



MARCH 14 | 6:00 PM



# 702 East Washington - Redevelopment

UDC Informational Submittal



JUNE 14 | 9:00 AM



JUNE 14 | 12:00 PM



JUNE 14 | 3:00 PM



JUNE 14 | 6:00 PM

■ 10-STORY SHADOW  
■ 14-STORY SHADOW

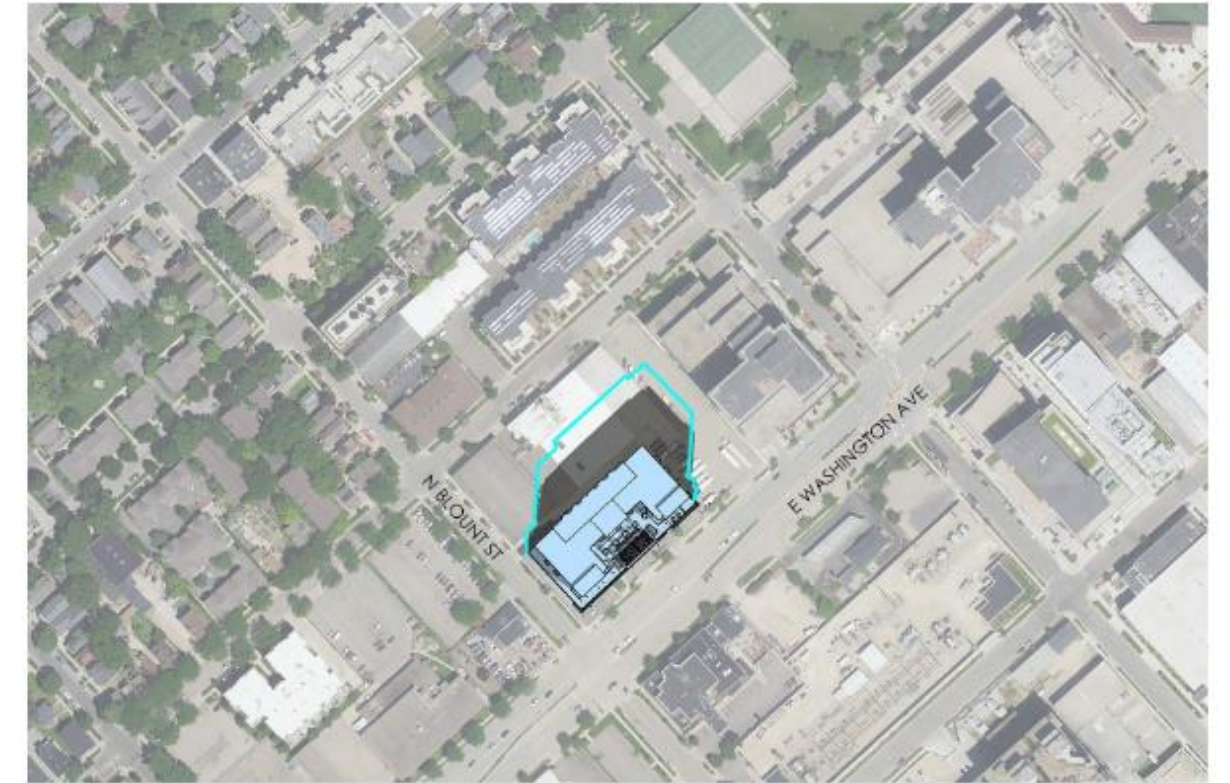


# 702 East Washington - Redevelopment

UDC Informational Submittal



SEPTEMBER 14 | 9:00 AM



SEPTEMBER 14 | 12:00 PM



SEPTEMBER 14 | 3:00 PM



SEPTEMBER 14 | 6:00 PM (POST-SUNSET)



# 702 East Washington - Redevelopment

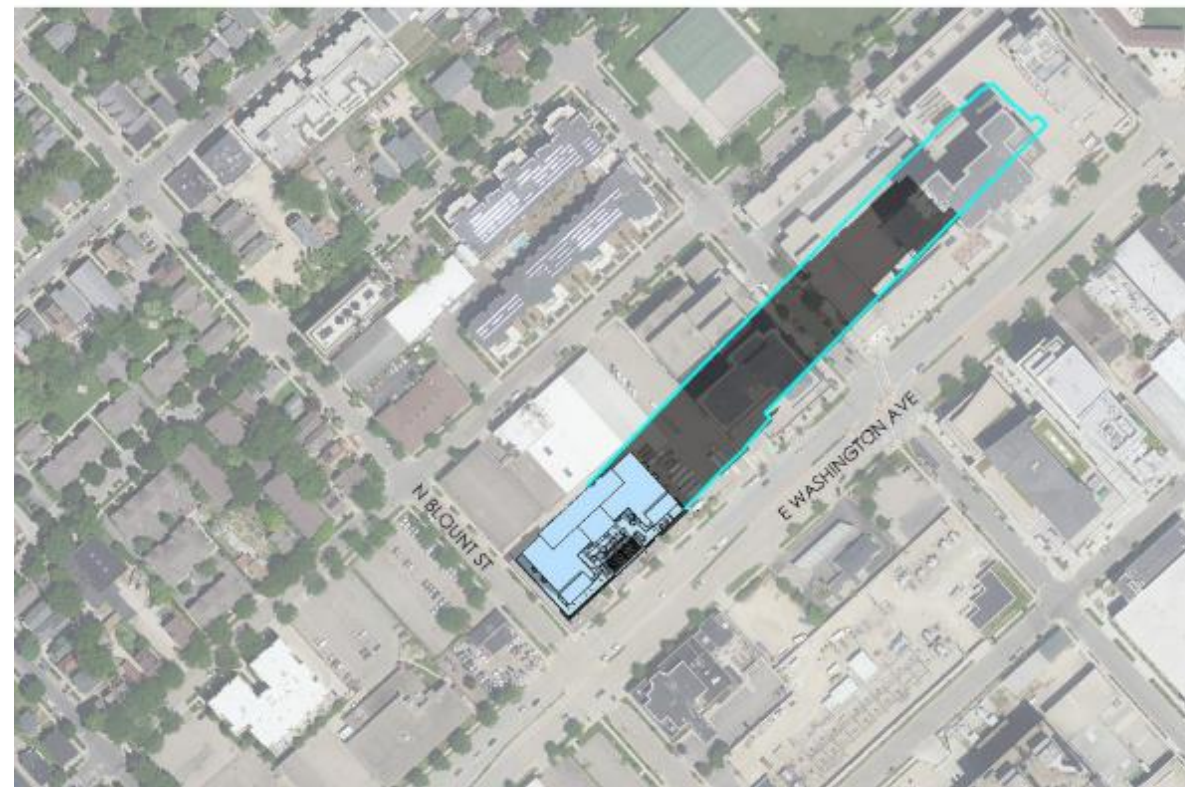
UDC Informational Submittal



DECEMBER 14 | 9:00 AM



DECEMBER 14 | 12:00 PM



DECEMBER 14 | 3:00 PM



DECEMBER 14 | 6:00 PM (POST-SUNSET<sup>1</sup>)