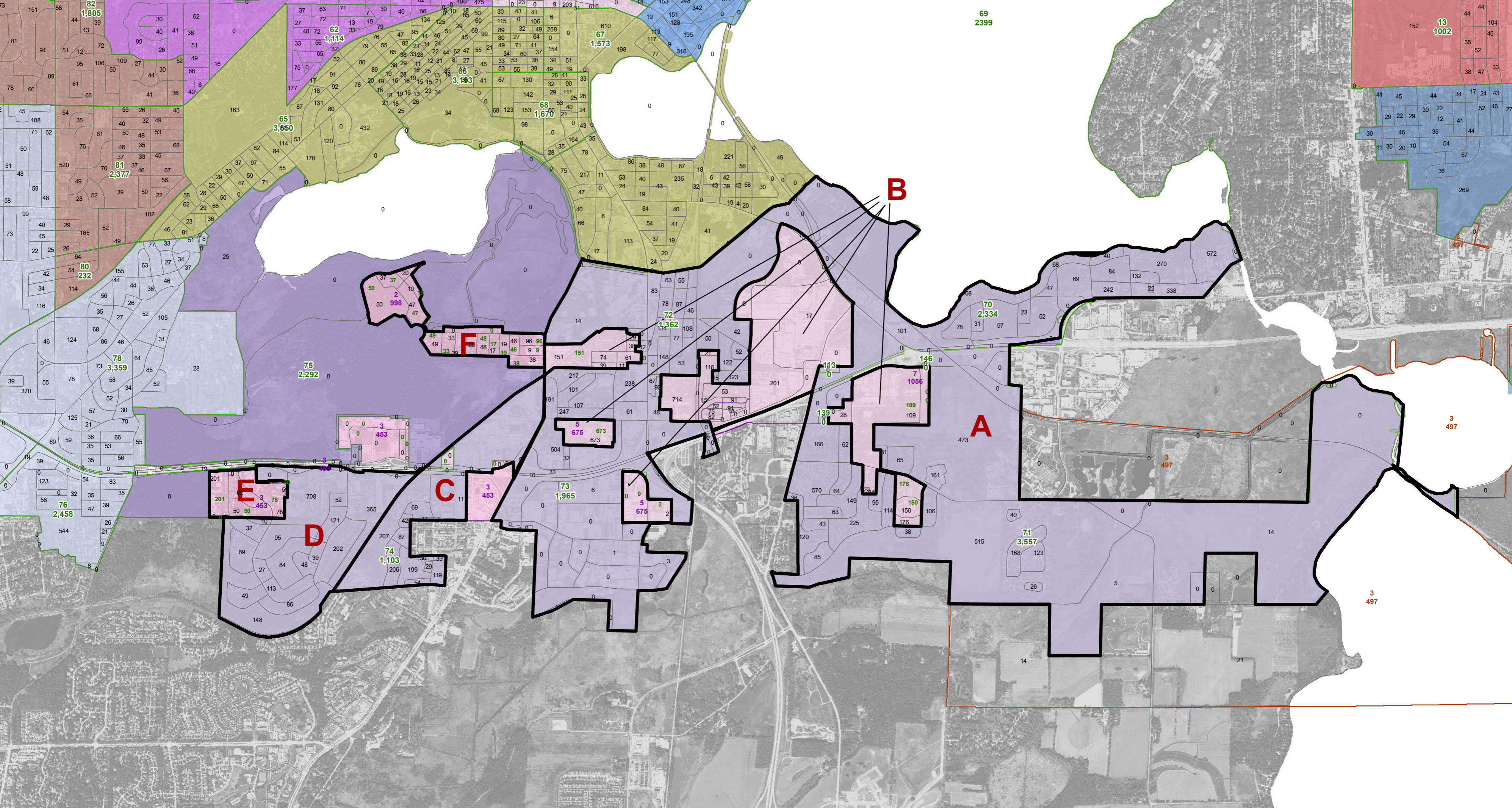


Existing District 14 and Nearby Town of Madison Attachment Areas

Source: U.S. Census Bureau, 2020 Census Redistricting Data
 Prepared by: City of Madison Planning Division
 September 8, 2021

Race												Hispanic Origin				People of Color							
Map Area	Total Population (Apr. 1, 2020)	White (Includes Hispanic White)		Non-White								Hispanic				(Non-White & Hispanic White)		Population 18 or Over		Housing Units			
		#	%	Black	American Indian and Alaska Native	Asian	Native Hawaiian and Other Pacific Islander	Some Other Race	Two or More Races	Sub Total		White Hispanic	Non-White Hispanic	Sub Total		Sub Total		#	%	#	Vacant	Occupied	
										#	%			#	%	#	%					#	%
A	9,218	3,998	43.4%	1,557	117	897	9	1,362	1,278	5,220	56.6%	285	2,244	2,529	27.4%	5,505	59.7%	7,053	76.5%	4,054	176	3,878	95.7%
A	9,218	3,998	43.4%	1,557	117	897	9	1,362	1,278	5,220	56.6%	285	2,244	2,529	27.4%	5,505	59.7%	7,053	76.5%	4,054	176	3,878	95.7%
B	3,144	1,297	41.3%	471	47	236	1	671	421	1,847	58.7%	142	988	1,130	35.9%	1,989	63.3%	2,450	77.9%	1,525	57	1,468	96.3%
Total	12,362	5,295	42.8%	2,028	164	1,133	10	2,033	1,699	7,067	57.2%	427	3,232	3,659	29.6%	7,494	60.6%	9,503	76.9%	5,579	233	5,346	95.8%
A	9,218	3,998	43.4%	1,557	117	897	9	1,362	1,278	5,220	56.6%	285	2,244	2,529	27.4%	5,505	59.7%	7,053	76.5%	4,054	176	3,878	95.7%
B	3,144	1,297	41.3%	471	47	236	1	671	421	1,847	58.7%	142	988	1,130	35.9%	1,989	63.3%	2,450	77.9%	1,525	57	1,468	96.3%
C	1,103	473	42.9%	328	11	69	1	79	142	630	57.1%	43	133	176	16.0%	673	61.0%	828	75.1%	538	18	520	96.7%
Total	13,465	5,768	42.8%	2,356	175	1,202	11	2,112	1,841	7,697	57.2%	470	3,365	3,835	28.5%	8,167	60.7%	10,331	76.7%	6,117	251	5,866	95.9%
A	9,218	3,998	43.4%	1,557	117	897	9	1,362	1,278	5,220	56.6%	285	2,244	2,529	27.4%	5,505	59.7%	7,053	76.5%	4,054	176	3,878	95.7%
B	3,144	1,297	41.3%	471	47	236	1	671	421	1,847	58.7%	142	988	1,130	35.9%	1,989	63.3%	2,450	77.9%	1,525	57	1,468	96.3%
C	1,103	473	42.9%	328	11	69	1	79	142	630	57.1%	43	133	176	16.0%	673	61.0%	828	75.1%	538	18	520	96.7%
D	2,248	1,282	57.0%	421	9	106	0	251	179	966	43.0%	86	341	427	19.0%	1,052	46.8%	1,770	78.7%	972	33	939	96.6%
Total	15,713	7,050	44.9%	2,777	184	1,308	11	2,363	2,020	8,663	55.1%	556	3,706	4,262	27.1%	9,219	58.7%	12,101	77.0%	7,089	284	6,805	96.0%
A	9,218	3,998	43.4%	1,557	117	897	9	1,362	1,278	5,220	56.6%	285	2,244	2,529	27.4%	5,505	59.7%	7,053	76.5%	4,054	176	3,878	95.7%
B	3,144	1,297	41.3%	471	47	236	1	671	421	1,847	58.7%	142	988	1,130	35.9%	1,989	63.3%	2,450	77.9%	1,525	57	1,468	96.3%
C	1,103	473	42.9%	328	11	69	1	79	142	630	57.1%	43	133	176	16.0%	673	61.0%	828	75.1%	538	18	520	96.7%
D	2,248	1,282	57.0%	421	9	106	0	251	179	966	43.0%	86	341	427	19.0%	1,052	46.8%	1,770	78.7%	972	33	939	96.6%
E	450	320	71.1%	58	3	23	0	0	46	130	28.9%	15	27	42	9.3%	145	32.2%	387	86.0%	258	12	246	95.3%
Total	16,163	7,370	45.6%	2,835	187	1,331	11	2,363	2,066	8,793	54.4%	571	3,733	4,304	26.6%	9,364	57.9%	12,488	77.3%	7,347	296	7,051	96.0%
F	595	452	76.0%	43	4	18	0	29	49	143	24.0%	16	56	72	12.1%	159	26.7%	484	81.3%	283	24	259	91.5%



69
2399

13
1002

67
1,573

62
1,114

65
3,650

66
3,193

68
1,670

81
2,377

80
232

75
2,292

72
1,362

70
2,334

76
2,458

201
453

3
453

73
1,965

5
675

673

5
675

2

7
1056

109

146

113

139

176

150

161

120

85

570

63

43

225

114

95

149

36

120

43

225

114

95

149

36

120

43

225

114

95

149

36

120

43

225

114

95

149

36

120

43

225

114

95

149

36

120

43

225

114

95

149

36

120

43

225

114

95

149

36

120

43

225

114

95

149

36

120

43

225

114

95

149

36

120

43

225

114

95

149

36

120

43

225

114

95

149

36

120

43

225

114

95

149

36

120

43

225

114

95

149

36

120

43

225

114

95

149

36

120

43

225

114

95

149

36

120

43

225

114

95

149

36

120

43

225

114

95

149

36

120

43

225

114

95

149

36

120

43

225

B

A

C

D

E

F

3
497

3
497