



## Agenda

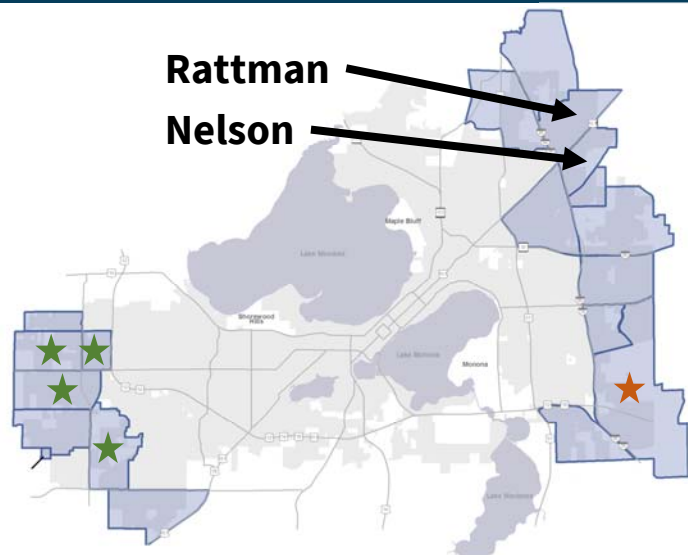


- NDP updates: Nelson in context
- Why update the Nelson NDP?
- Background information
- Project challenges
- Process/timeline
- Questions

# Neighborhood Development Plans

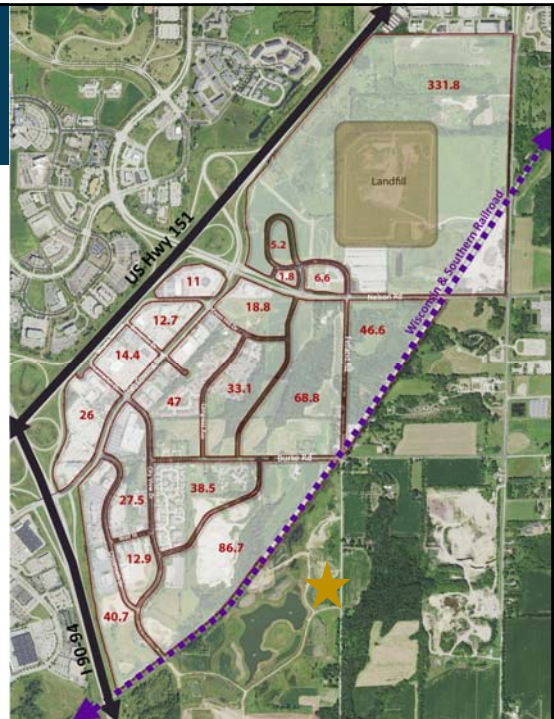


- 19 NDPs
- 4 recently **updated**
- 1 recently **created**
- 2 being updated

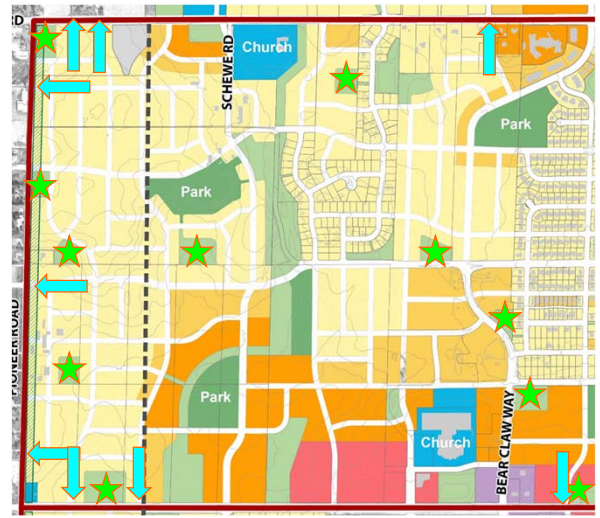


## Why update?

- Better reflect Comp Plan priorities
- Lacking local street network
- Connectivity, walkability, bikeability
- New neighborhood (Autumn Lake) and **planned school** to the south



## Example NDP Update Changes



















## Nelson NDP Background

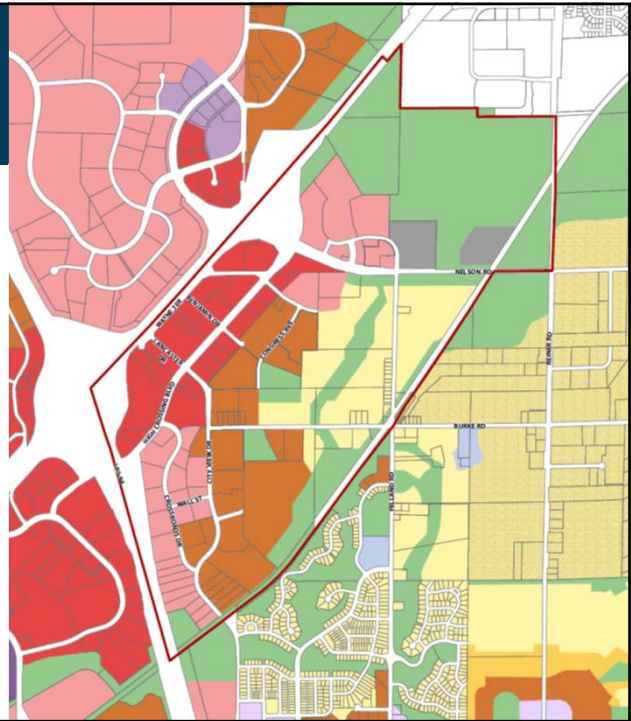


- Adopted 1992
- Amended 1993, 1999, 2001, 2005, 2009, 2017
- Amendments have been piecemeal, primarily in response to development requests

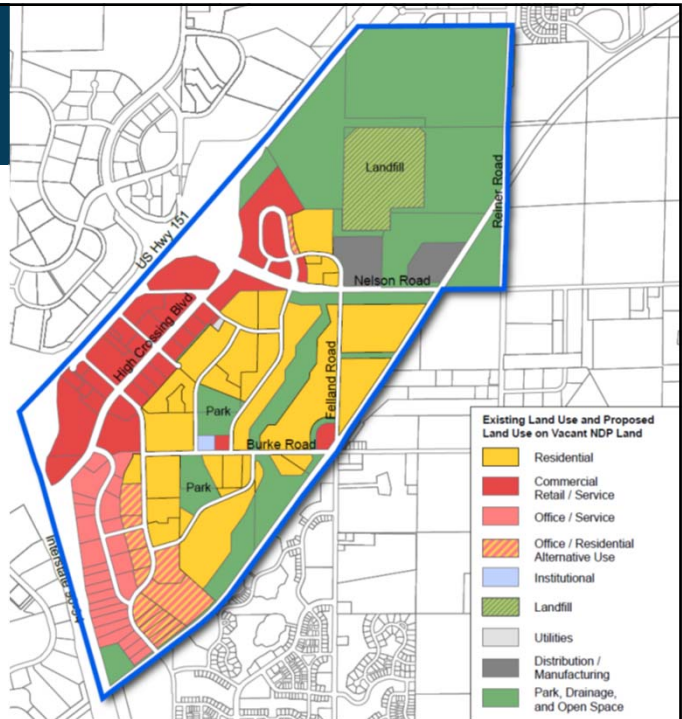
# Comp Plan GFLU

## 2018 Comprehensive Plan: Draft Future Land Use Map

- |  |  |
|--|--|
|  Low Residential (LR)             |  Downtown Mixed Use (DMU)   |
|  Low-Medium Residential (LMR)     |  Downtown Core (DC)         |
|  Medium Residential (MR)          |  General Commercial (GC)    |
|  High Residential (HR)            |  Employment (E)             |
|  Neighborhood Mixed Use (NMMU)    |  Industrial (I)             |
|  Community Mixed Use (CMU)        |  Parks and Open Space (P)   |
|  Regional Mixed Use (RMU)         |  Special Institutional (SI) |
|  Neighborhood Planning Area (NPA) |  Airport (A)                |



# Nelson NDP FLU

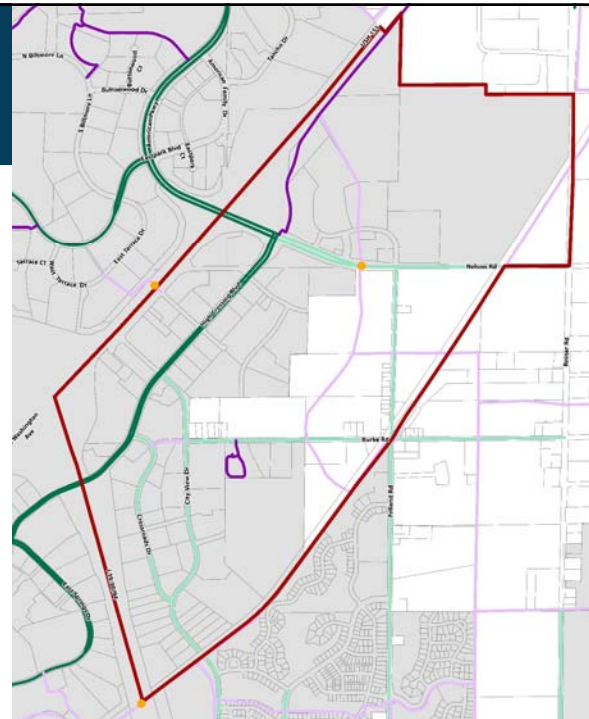


# Transit – Weekday Service



# Bicycle Lanes & Shared-Use Paths

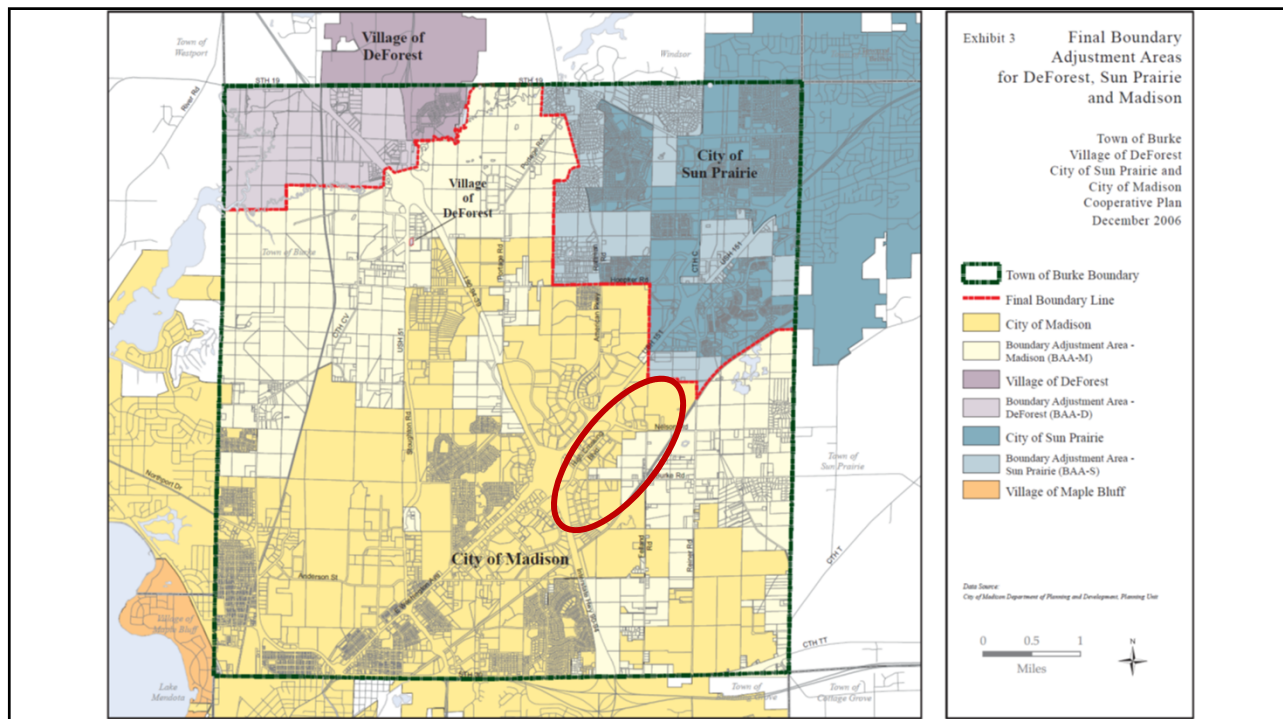
- Planning Area
- Existing Bicycle Lane
- Planned Bicycle Lane
- Existing Shared-Use Path
- Planned Shared-Use Path
- Planned Overpass/Underpass



# Cooperative Plan

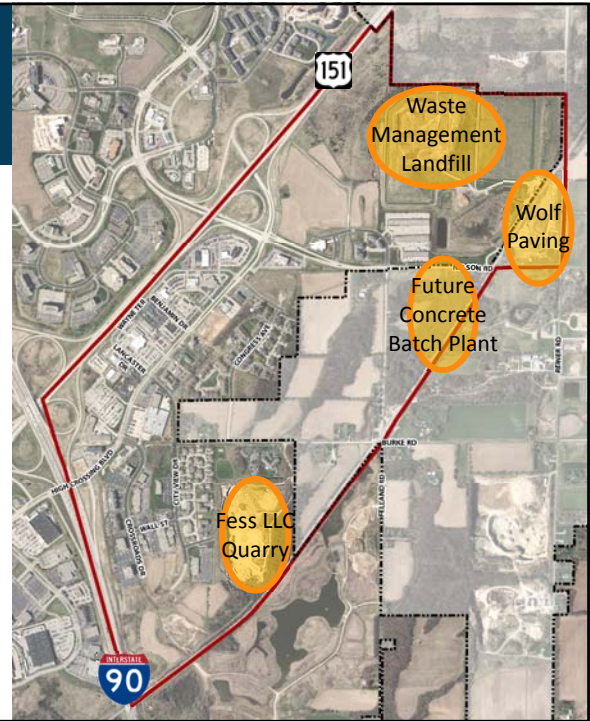


- City of Madison – Town of Burke – City of Sun Prairie – Village of DeForest cooperative plan that sets final municipal boundaries
- Annexation to City for Nelson areas OK; final dissolution of Town in 2036



## Nelson Challenges

- Rural uses in a developing area



## Nelson Challenges

- Barriers



## Nelson Challenges

- Elevation

~1030 feet  
~895 feet



## Estimated Timeline



- September/Early October: gather background data & coordinate with adjacent jurisdictions
- October 23<sup>rd</sup>: Public Meeting #1
  - Patriot Park expansion
  - Increasing car & truck traffic
  - Roadway expansions needed – Nelson, Reiner
  - Wilde employee parking; unloading of cars



## Estimated Timeline



- Late October/Early November: Additional stakeholder meetings
- November: Plan Commission update
- Through December: Draft Plan
- Early 2019: Public Meeting #2
- Spring 2019: BCC review
- Late Spring 2019: CC review

## Questions?

Project website: [www.cityofmadison.com/NelsonNDP](http://www.cityofmadison.com/NelsonNDP)

Ben Zellers, AICP, CNU-A  
[bzellers@cityofmadison.com](mailto:bzellers@cityofmadison.com)  
608-266-4866