



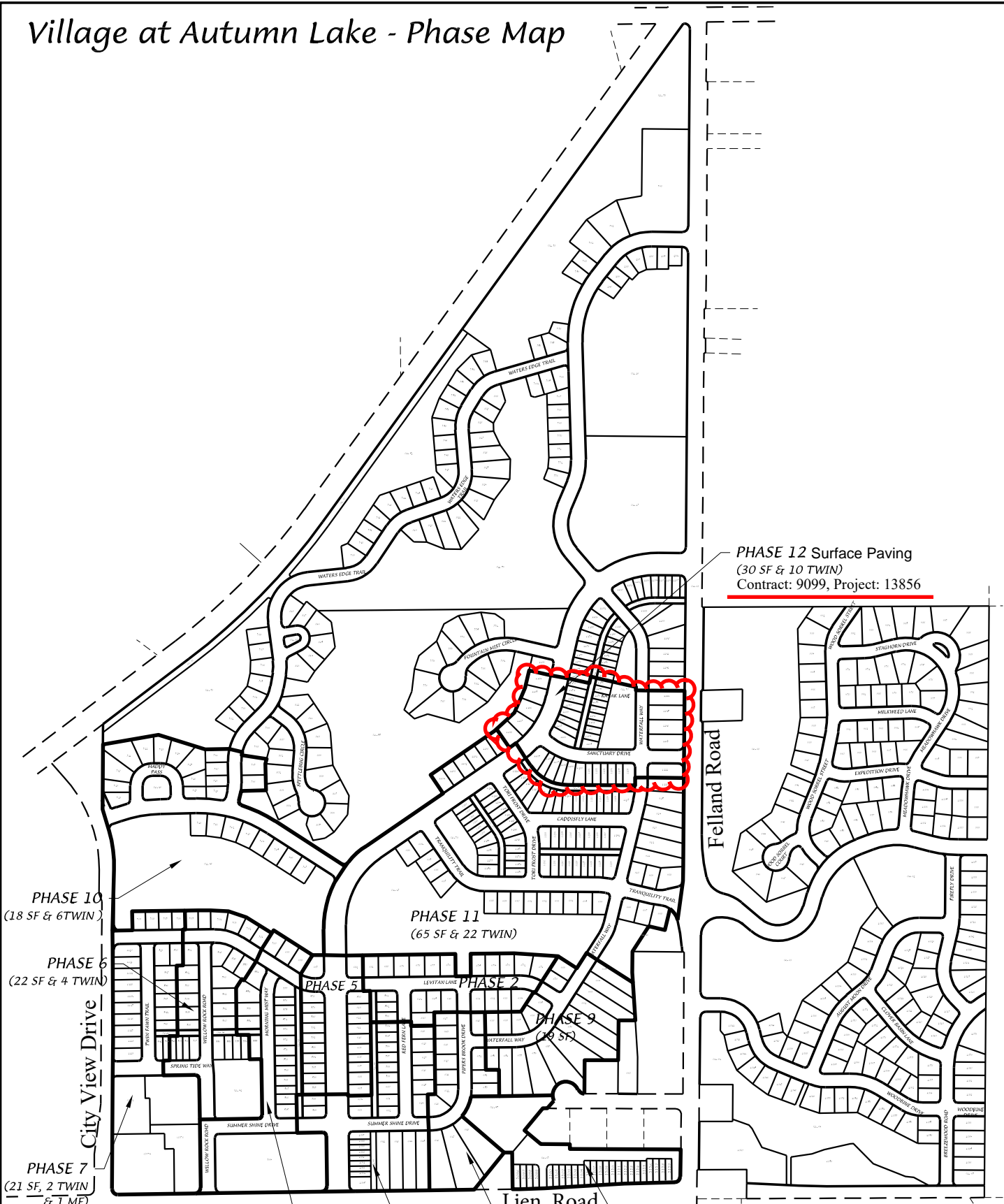
Note: Village at Autumn Lake

City of Madison, WI - GIS/Mapping data

Printed By: enbls

Disclaimer: The City makes no representation about the accuracy of these records and shall not be liable for any damages

Village at Autumn Lake - Phase Map



PHASE 12 Surface Paving
 (30 SF & 10 TWIN)
 Contract: 9099, Project: 13856

PHASE 10
 (18 SF & 6TWIN)

PHASE 6
 (22 SF & 4 TWIN)

PHASE 7
 (21 SF, 2 TWIN & 1 MF)

PHASE 11
 (65 SF & 22 TWIN)

PHASE 5

PHASE 2

PHASE 9
 (29 SF)

Lien Road

PHASE 4

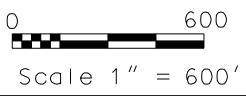
PHASE 1

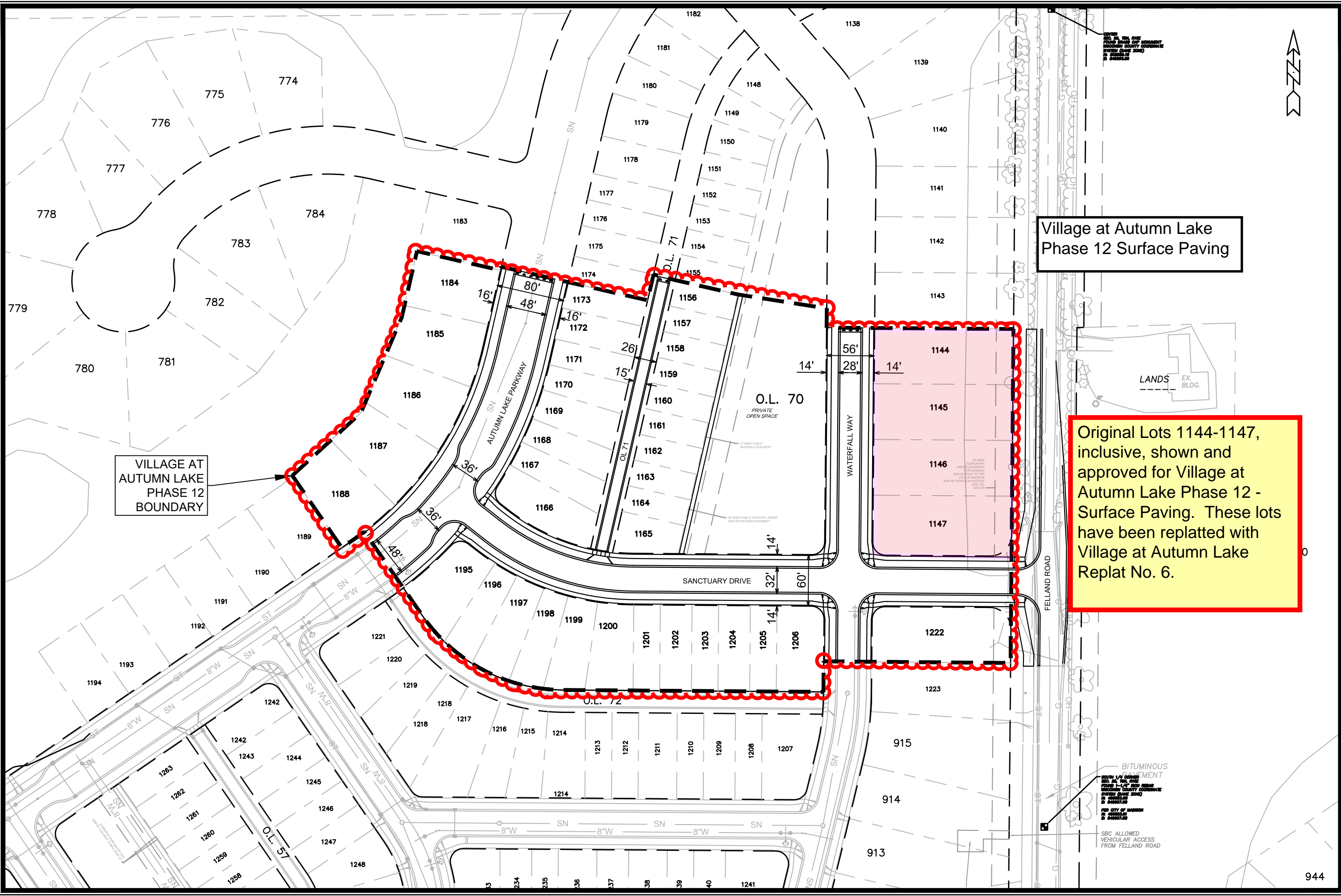
PHASE 3

PHASE 8
 (PH8-10 TWIN)
 (PH8B-14 TWIN)

DATE: 07-29-21
 F.N.: 20-05-155
 REV.
 DRAWN BY: ATF

D'ONOFRIO KOTTKE AND ASSOCIATES, INC.
 7530 Westward Way, Madison, WI 53717
 Phone: 608.833.7530 • Fax: 608.833.1089
 YOUR NATURAL RESOURCE FOR LAND DEVELOPMENT





Village at Autumn Lake
Phase 12 Surface Paving

Original Lots 1144-1147, inclusive, shown and approved for Village at Autumn Lake Phase 12 - Surface Paving. These lots have been replatted with Village at Autumn Lake Replat No. 6.

VILLAGE AT AUTUMN LAKE
PHASE 12
BOUNDARY

BITUMINOUS
SURFACEMENT
SOUTH 1/4 CORNER
SECTION 24, T12S, R12E
COUNTY COORDINATE
SYSTEM (STATE ZONE)
N. 4308732.0
E. 4408732.0
FOR CITY OF MADISON
BY: J. HANSEN
DATE: 12/15/2022

SBC ALLOWED
VEHICULAR ACCESS
FROM FELLAND ROAD

DATE	BY
REVISION	
Designed By: LMC	Date: 1/26/2022 8:39 AM
Scale: 1"=100'	
13856	BPW

VILLAGE AT AUTUMN LAKE PHASE 12 - BOARD OF PUBLIC WORKS EXHIBIT 13856
MADISON, WI
VILLAGE AT AUTUMN LAKE - PHASE 12
M:\DESIGN\Projects\13856\CAD\Streets\13856EN-Street\Inework.dwg
CONTRACT NO: 9098

13856
BPW

There are no objections to this plat with respect to Secs. 236.15, 236.16, 236.20 and 236.21(1) and (2), Wis. Stats. as provided by s. 236.12, Wis. Stats.

Certified _____, 20____



Department of Administration

VILLAGE AT AUTUMN LAKE REPLAT NO. 6

LOTS 1138-1147, VILLAGE AT AUTUMN LAKE REPLAT NO. 5,
LOCATED IN THE SE1/4 OF THE NW1/4 AND THE NE1/4 OF THE SW1/4 OF SECTION 26, T8N, R10E,
CITY OF MADISON, DANE COUNTY, WISCONSIN

Village at Autumn Lake Phase 12 - Surface Paving
Contract: 9099, Project: 13856
Change in lot numbers due to replat

SURVEYOR'S CERTIFICATE

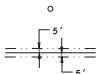
I, Brett T. Staffregan, Professional Land Surveyor S-2742 do hereby certify that in full compliance with the provisions of Chapter 236 of the Wisconsin State Statutes and the Subdivision Regulations of the City of Madison, and under the direction of the owners listed below, I have surveyed, divided and mapped "Village at Autumn Lake Replat No. 6" and that such plat correctly represents all the exterior boundaries and the subdivision of the land surveyed as its described as follows:
Lots 1138-1147 Village at Autumn Lake Replat No. 5, recorded in Volume 61-2448 of Plats on pages 254-257 as Document Number 5727033, Dane County Registry, located in the SE1/4 of the NW1/4 and the NE1/4 of the SW1/4 of Section 26, T8N, R10E, City of Madison, Dane County, Wisconsin,
Containing 112.108 square feet 12.587 acres.

Dated this 18th day of July, 2022

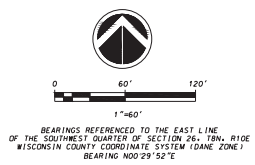
Brett T. Staffregan, Professional Land Surveyor, S-2742

CURVE TABLE						
CURVE NUMBER	LOT	RADIUS (FEET)	CHORD (FEET)	ARC BEARING	CHORD BEARING	CENTRAL ANGLE
1	25.00	35.33	59.24	S45°27'44"W	89°55'44"	
2	15.00	21.23	23.58	N44°32'16"W	90°04'16"	
3	178.00	126.75	129.60	N20°21'36"W	41°42'56"	
	1272	178.00	31.43	N04°34'05"W	10°07'54"	
	1273	178.00	46.08	N17°04'16"W	14°52'28"	
	1274	178.00	46.08	N31°56'44"W	14°52'28"	
4	1275	178.00	5.70	N40°18'00"W	01°50'04"	

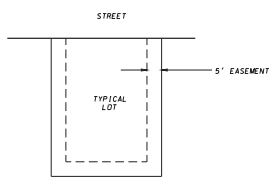
LEGEND
Placed 1-1/4" x 18" solid round iron rebar stakes, weighing 4-30 lbs/ft. All other lot and outlot corners are marked with 3/4" x 18" solid round iron rebar stakes, weighing 1.50 lbs/ft.
Public utility easement (unless otherwise dimensioned).
Utility easements as herein set forth are for the use of PUBLIC BODIES and PRIVATE PUBLIC UTILITIES having the right to serve the area.



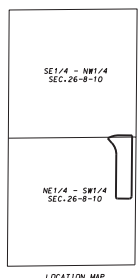
Original Lots 1144-1147, inclusive, approved for Village at Autumn Lake Phase 12 - Surface Paving and are now replatted as Lots 1264-1268, inclusive. New Lots 1264-1268 are shown.



BEARINGS REFERENCED TO THE EAST LINE OF THE SOUTHWEST QUARTER OF SECTION 26, T8N, R10E WISCONSIN COUNTY COORDINATE SYSTEM (DANE ZONE) BEARING N00°29'52"E



EASEMENT FOR DRAINAGE PURPOSES DETAIL
Not to Scale - See note 2, sheet 2



LOCATION MAP
NOT TO SCALE

