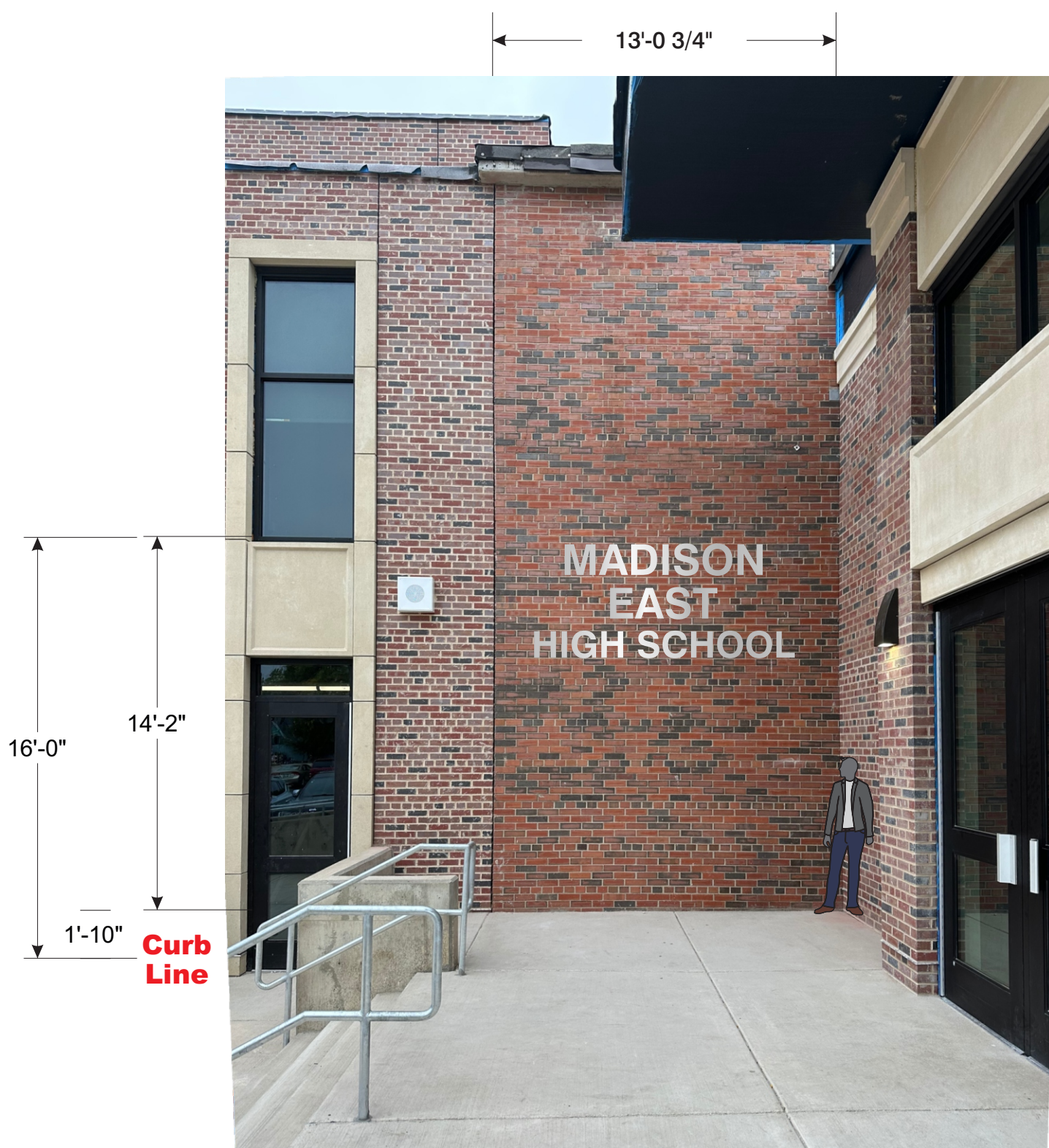
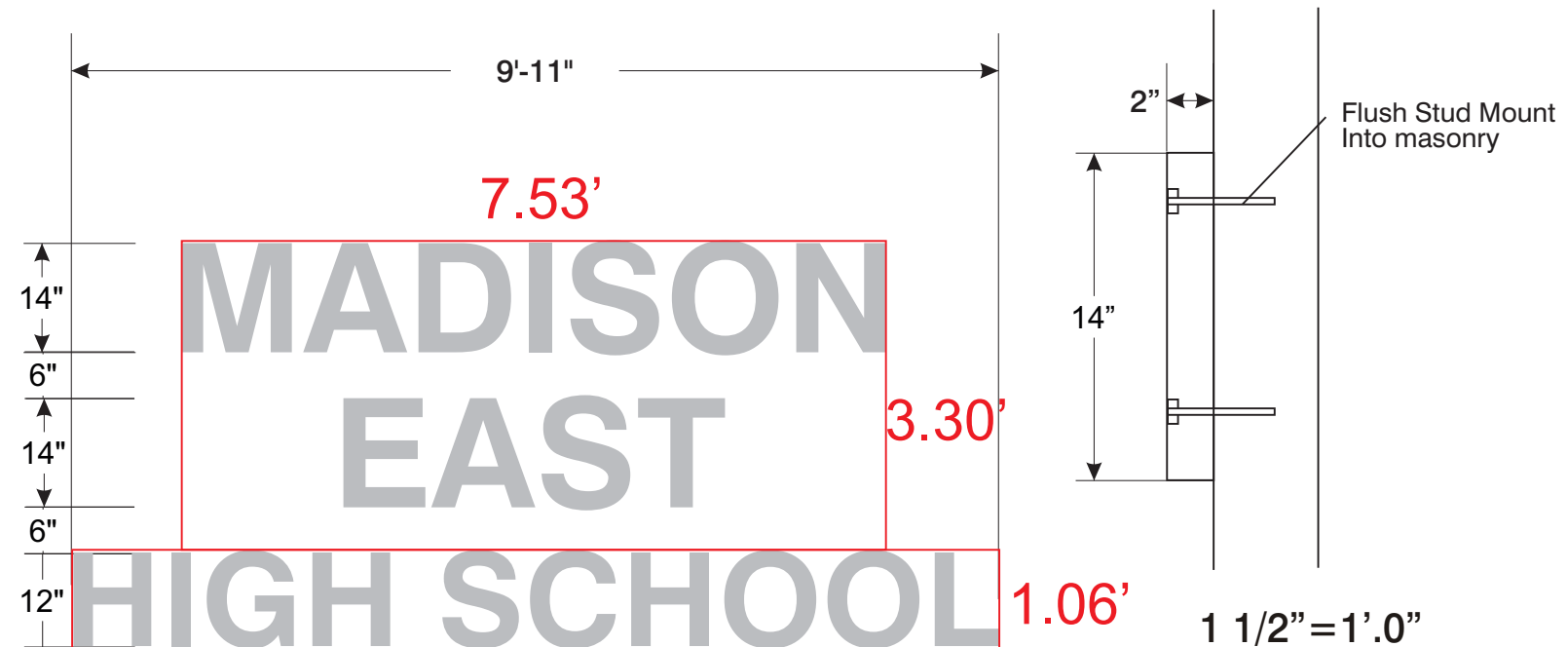


# 1.4 East Elevation Area E1 - Fabricated Aluminum Letters



3/16" = 1'.0"



9.92'

1/2" = 1'.0"

3.30'H x 7.53'W = 24.85 Sq Ft  
 1.06'H x 9.92'W = 10.52 Sq Ft  
**35.37 Total Sq Ft**



Print to Scale on 11" x 17" Paper

<p>MAP Brushed Aluminum</p> <p><b>Wind Load</b> Compliance Statement: Withstand up to 75 MPH Winds</p>	<p><b>Illumination Compliance</b> Statement: N/A</p>	<p><b>Construction:</b> Fabricated Aluminum Letters Stud Mounted To Brick Masonry</p>
--	--	---

<p><b>Ryan Signs, Inc.</b> 3007 Perry Street • Madison, WI 53713 • Tel (608) 271-7979 • Fax (608) 271-7853</p>	<p>SCALE: VARIES DATE: 6/29/22 REVISED: 3/21/24 DRAWN BY: KW</p>	<p>APPROVED: Copyright 2022 by Ryan Signs, Inc.</p>
<p><b>JHF - MADISON EAST HIGH SCHOOL - EXTERIOR SIGNS</b></p> <p><small>These plans are the exclusive property of Ryan Signs, Inc. and are the result of the original design work of its employees. They are submitted to you or your company for the sole purpose of your consideration of whether to purchase from Ryan Signs, Inc., Madison, Wisconsin a sign designed and manufactured according to these plans. Distribution or exhibition of these plans to anyone other than employees of your company or use of these plans to construct a sign similar to the one embodied herein is expressly prohibited. In the event that such use, distribution or exhibition occurs, the undersigned expressly agrees to pay to Ryan Signs, Inc. the sum of 25% of our purchase price as quoted to you. This covenant of payment is acknowledged to be compensation for the time, effort and talent devoted to the preparation of the plans.</small></p>		<p>DRAWING NUMBER: <b>7438</b></p>