

# Proposed Alder Districts - Concept 5

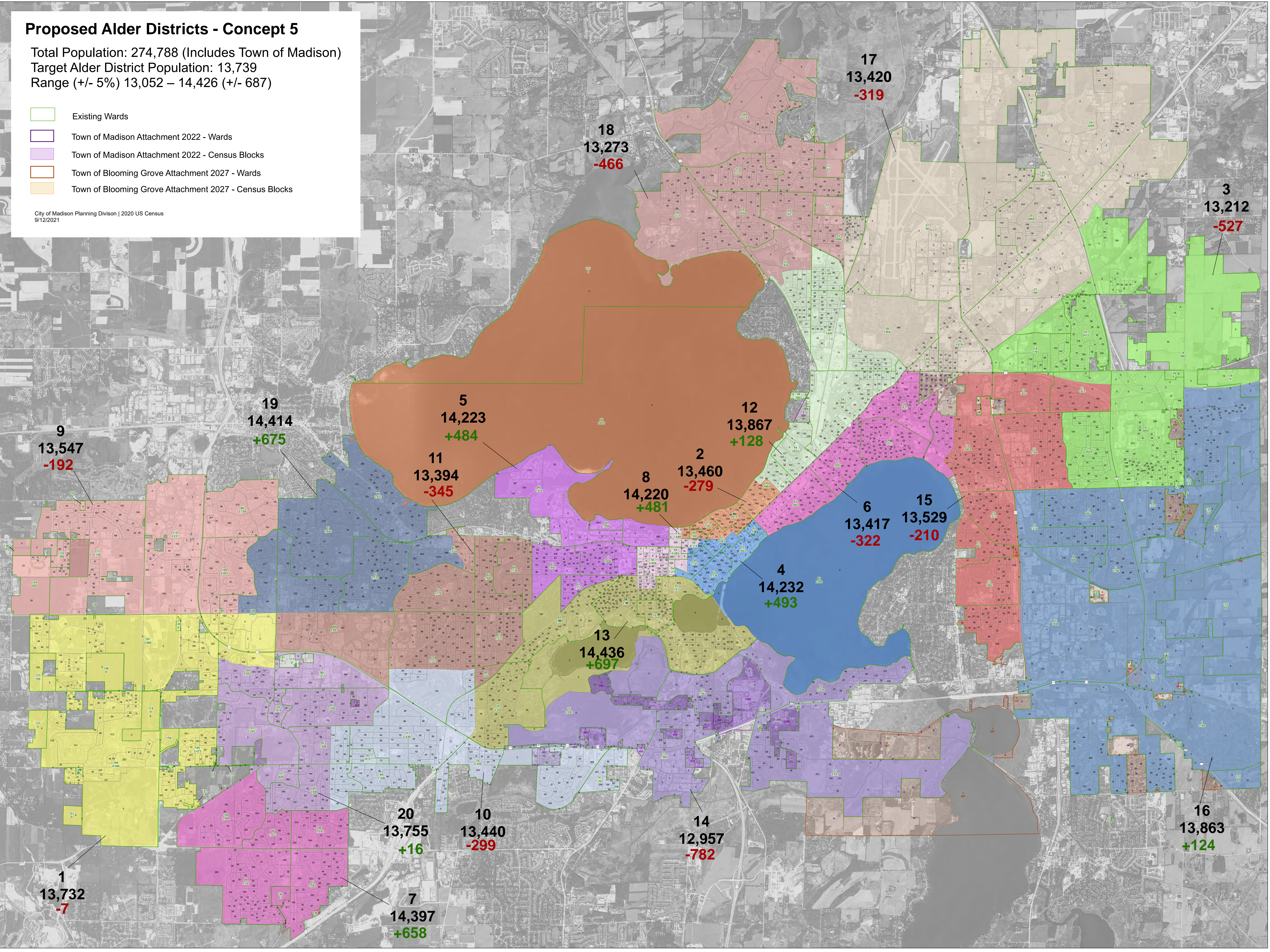
Total Population: 274,788 (Includes Town of Madison)

Target Alder District Population: 13,739

Range (+/- 5%) 13,052 – 14,426 (+/- 687)

- Existing Wards
- Town of Madison Attachment 2022 - Wards
- Town of Madison Attachment 2022 - Census Blocks
- Town of Blooming Grove Attachment 2027 - Wards
- Town of Blooming Grove Attachment 2027 - Census Blocks

City of Madison Planning Division | 2020 US Census  
9/12/2021



# Proposed Alder Districts - Concept 5

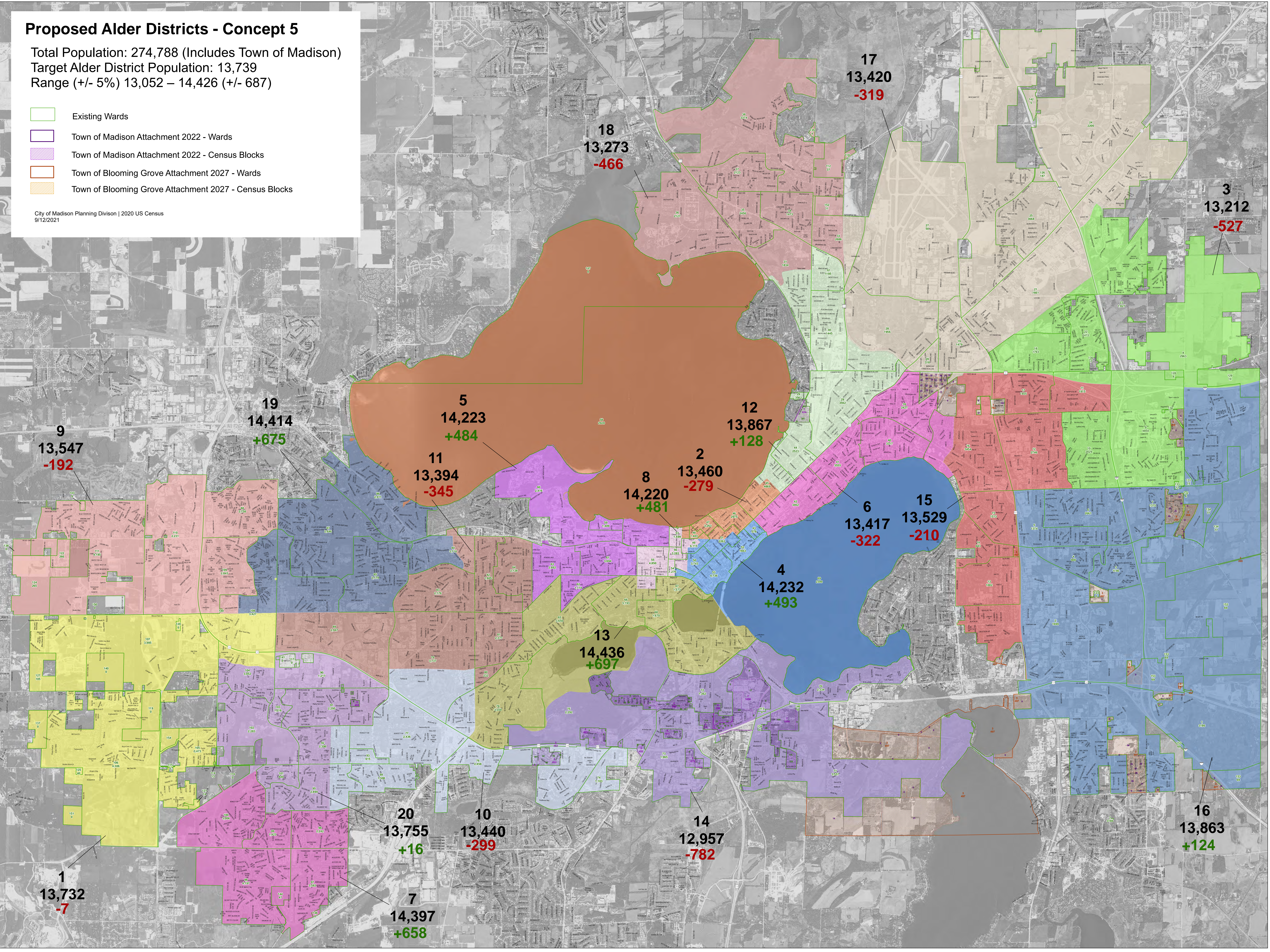
Total Population: 274,788 (Includes Town of Madison)

Target Alder District Population: 13,739

Range (+/- 5%) 13,052 – 14,426 (+/- 687)

- Existing Wards
- Town of Madison Attachment 2022 - Wards
- Town of Madison Attachment 2022 - Census Blocks
- Town of Blooming Grove Attachment 2027 - Wards
- Town of Blooming Grove Attachment 2027 - Census Blocks

City of Madison Planning Division | 2020 US Census  
9/12/2021



# Proposed Alder Districts - Concept 5

## Population By Race or Ethnicity

Total Population: 274,788 (Includes Town of Madison)

Target Alder District Population: 13,739

Range (+/- 5%) 13,052 – 14,426 (+/- 687)

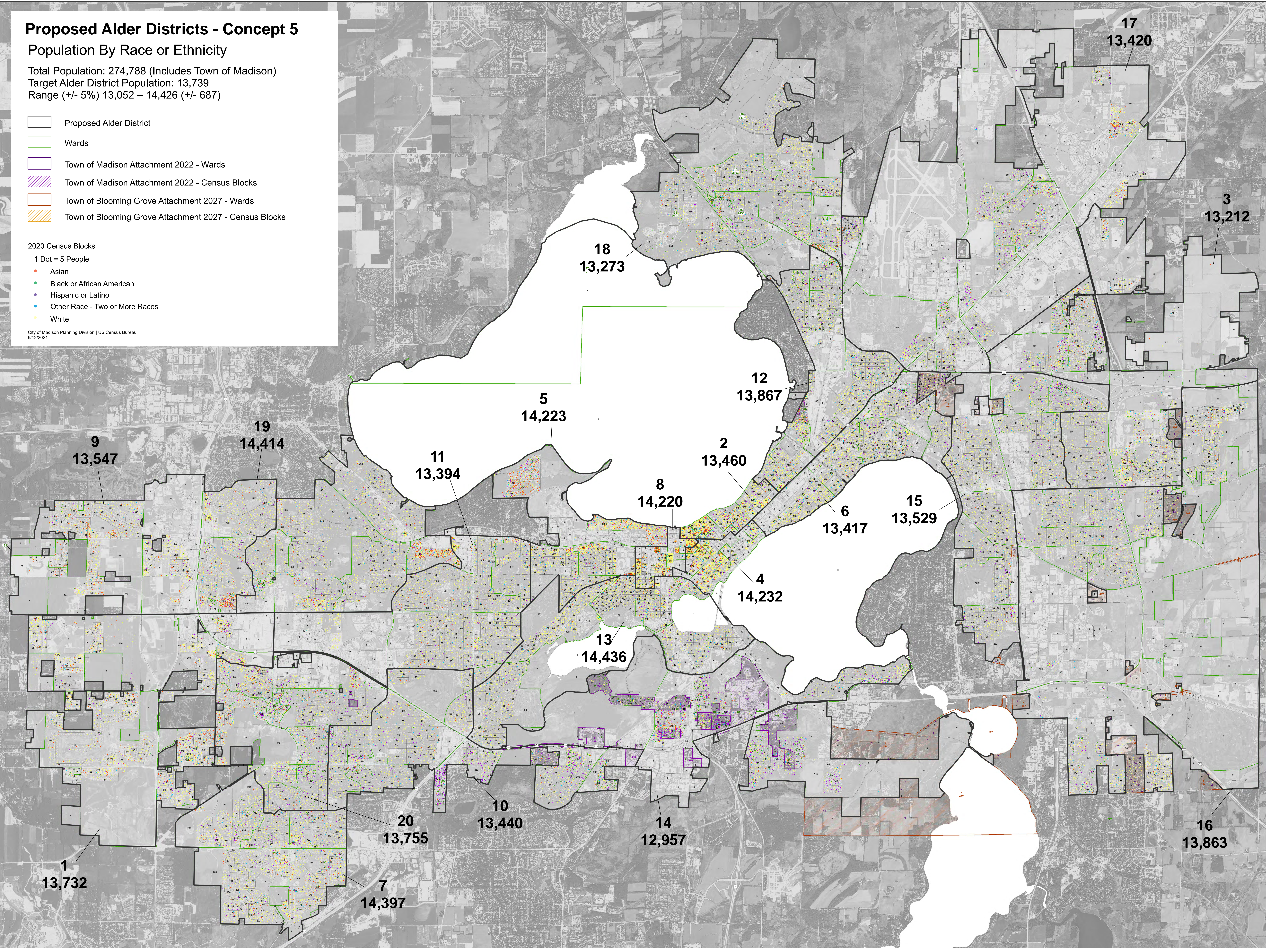
- Proposed Alder District
- Wards
- Town of Madison Attachment 2022 - Wards
- Town of Madison Attachment 2022 - Census Blocks
- Town of Blooming Grove Attachment 2027 - Wards
- Town of Blooming Grove Attachment 2027 - Census Blocks

### 2020 Census Blocks

1 Dot = 5 People

- Asian
- Black or African American
- Hispanic or Latino
- Other Race - Two or More Races
- White

City of Madison Planning Division | US Census Bureau  
9/12/2021



# Downtown / UW Campus Concept 5

**5**  
**14,223**  
**+484**

**12**  
**13,867**  
**+128**

**2**  
**13,460**  
**-279**

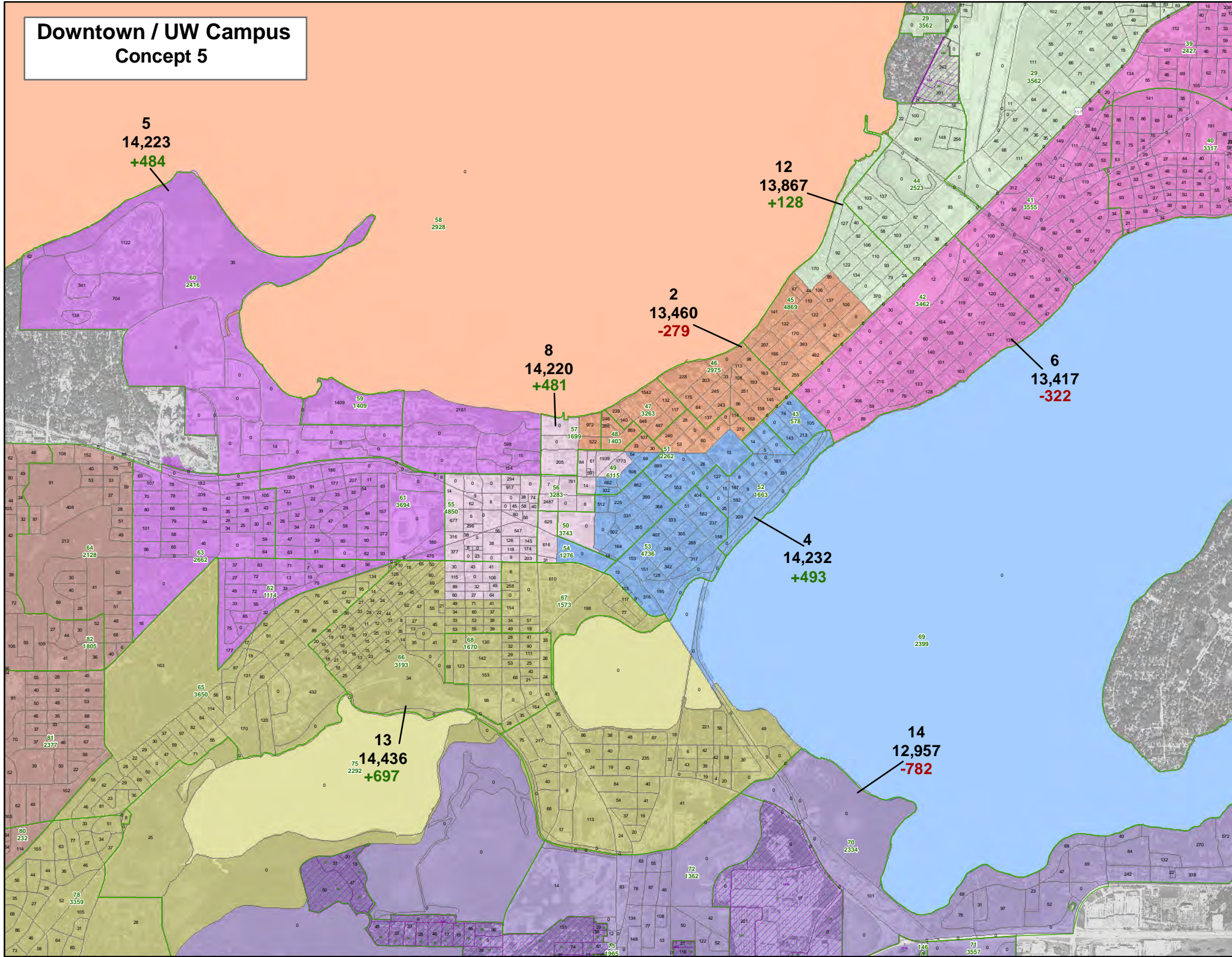
**8**  
**14,220**  
**+481**

**6**  
**13,417**  
**-322**


**4**  
**14,232**  
**+493**

**13**  
**14,436**  
**+697**

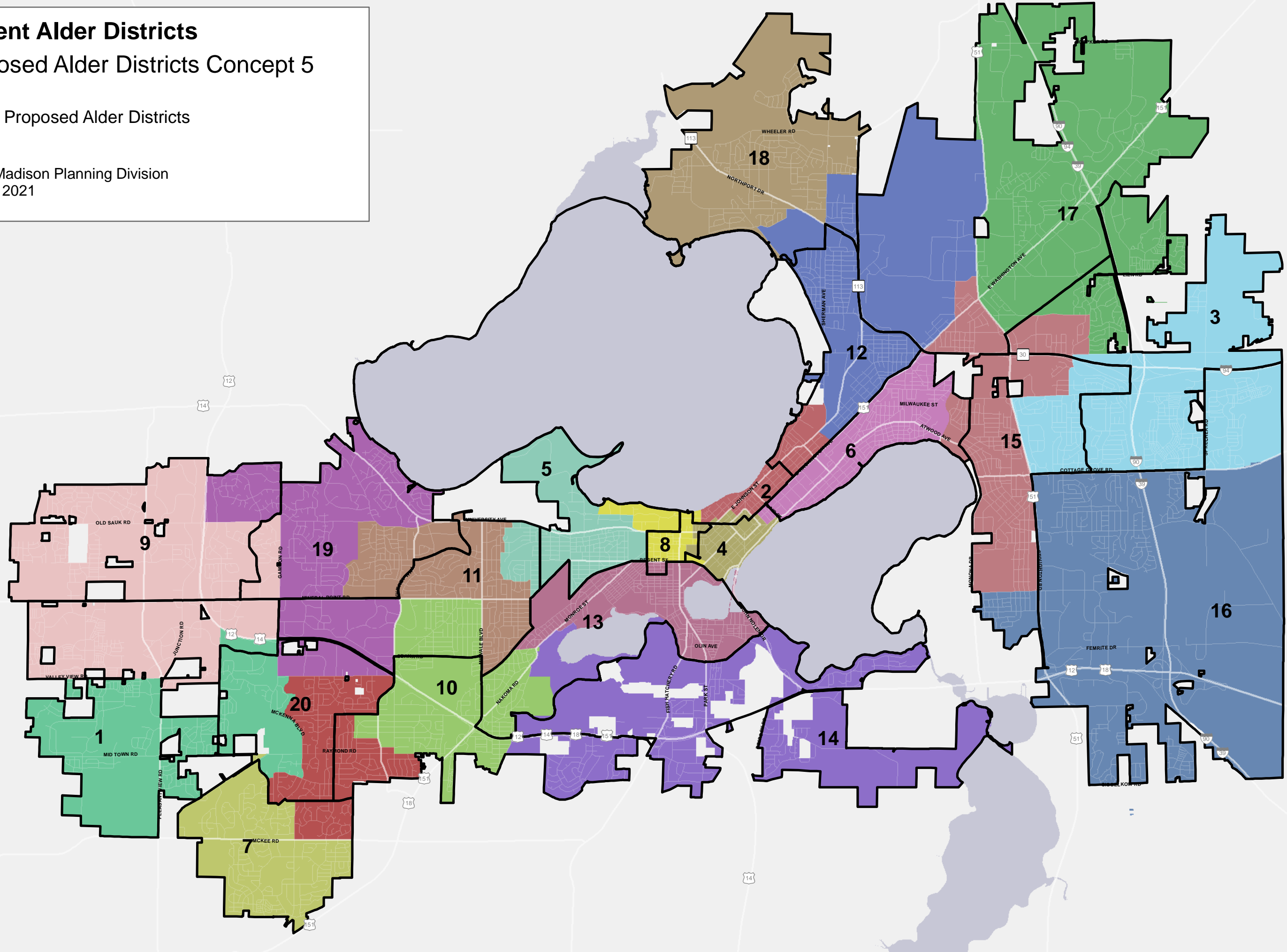
**14**  
**12,957**  
**-782**



**Current Alder Districts**  
**Proposed Alder Districts Concept 5**

 Proposed Alder Districts


City of Madison Planning Division  
 Sep 12, 2021



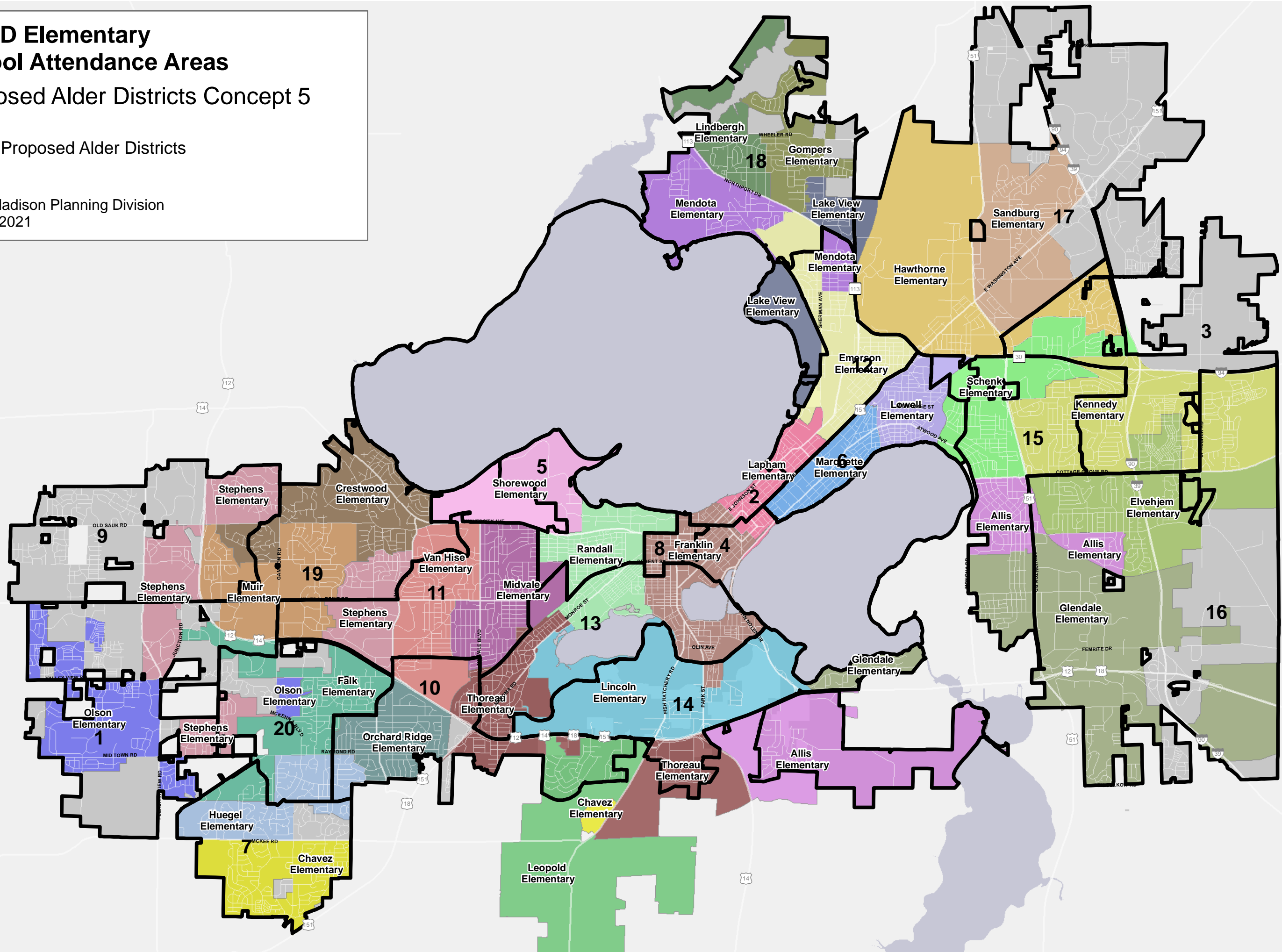


# MMSD Elementary School Attendance Areas

## Proposed Alder Districts Concept 5

 Proposed Alder Districts

City of Madison Planning Division  
Sep 12, 2021



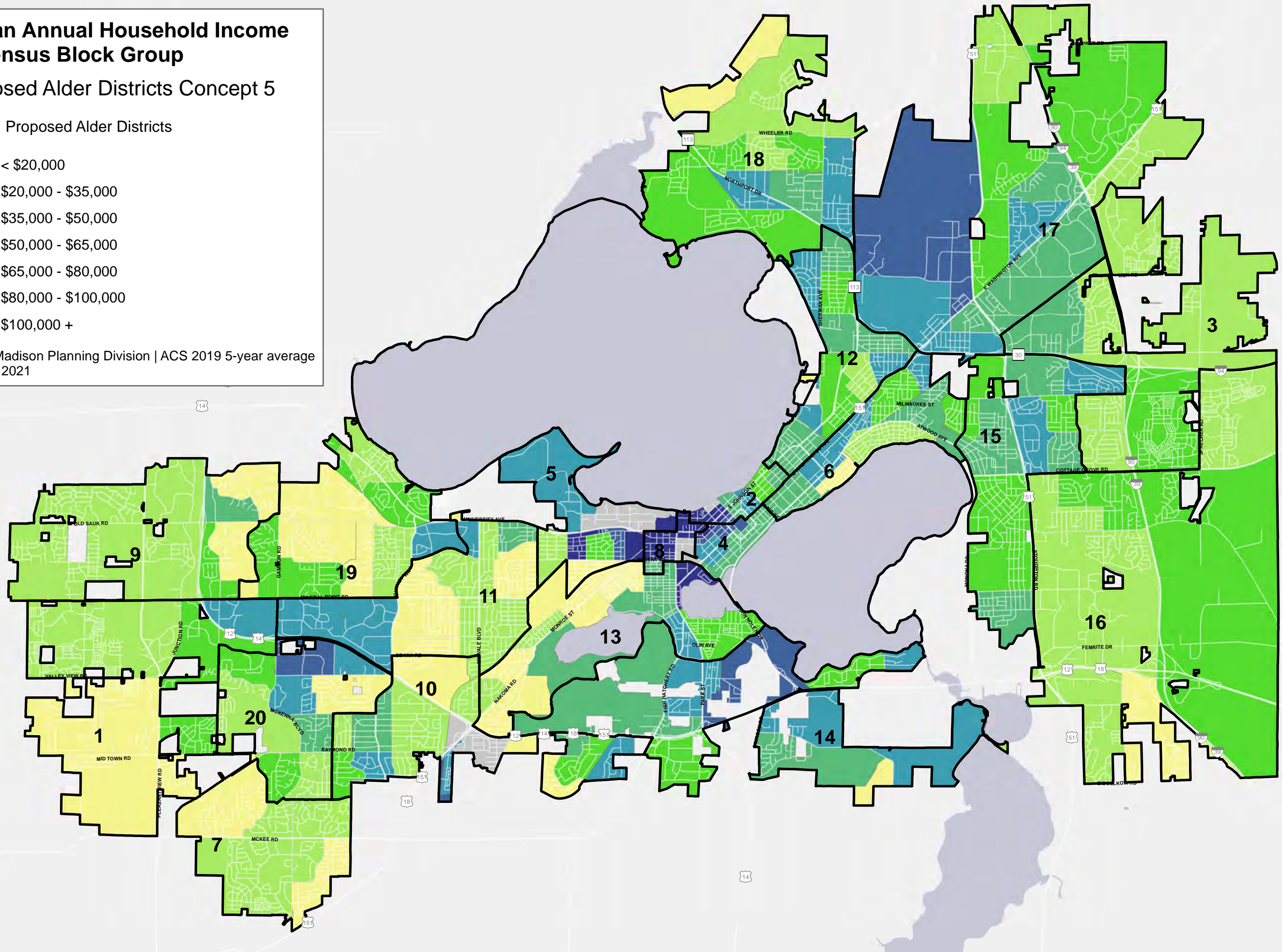
# Median Annual Household Income by Census Block Group

## Proposed Alder Districts Concept 5

Proposed Alder Districts

- < \$20,000
- \$20,000 - \$35,000
- \$35,000 - \$50,000
- \$50,000 - \$65,000
- \$65,000 - \$80,000
- \$80,000 - \$100,000
- \$100,000 +


City of Madison Planning Division | ACS 2019 5-year average  
Sep 12, 2021











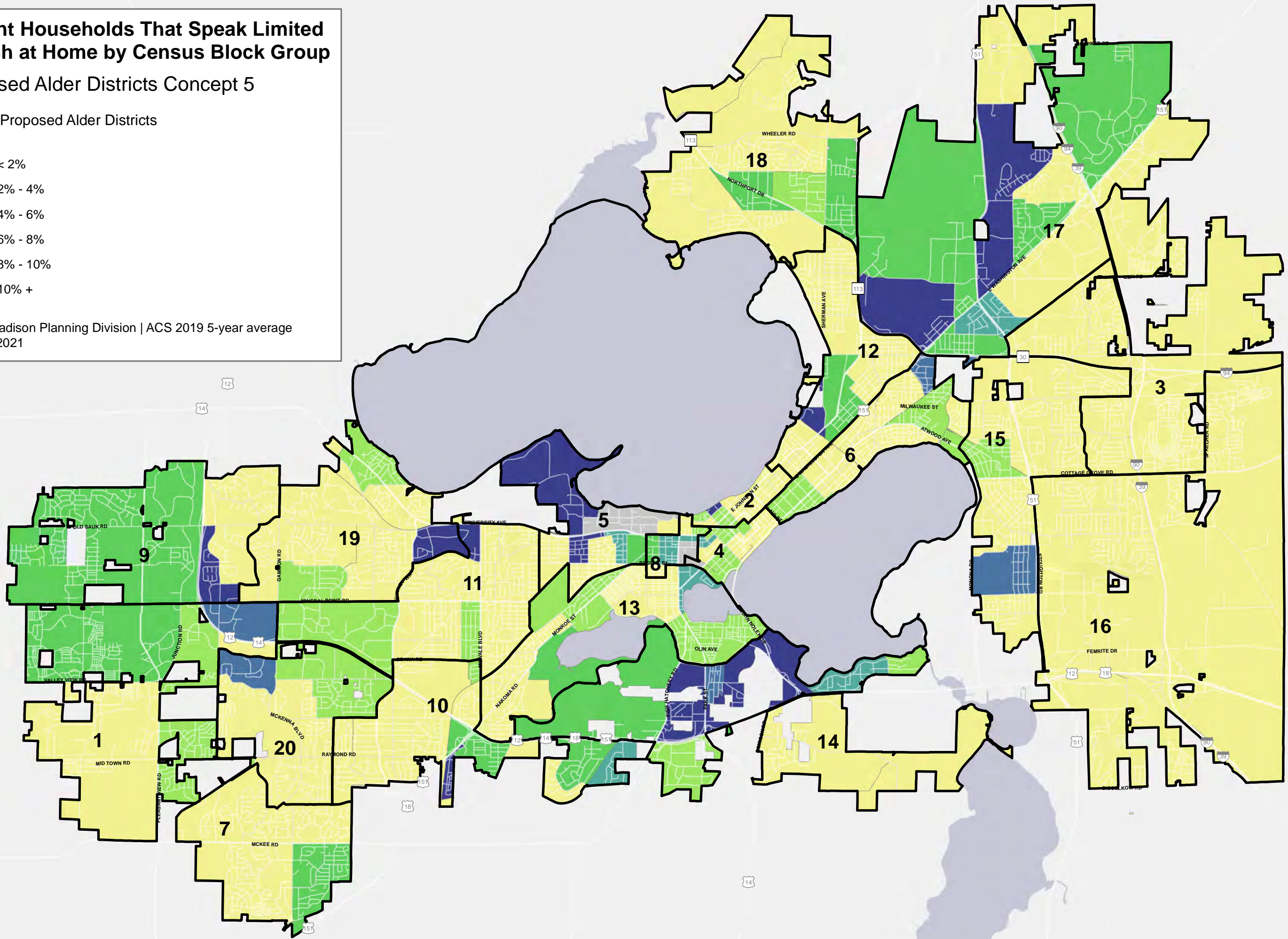
# Percent Households That Speak Limited English at Home by Census Block Group

## Proposed Alder Districts Concept 5

 Proposed Alder Districts

-  < 2%
-  2% - 4%
-  4% - 6%
-  6% - 8%
-  8% - 10%
-  10% +

City of Madison Planning Division | ACS 2019 5-year average  
Sep 12, 2021





**2020 Census Redistricting Data - Proposed Alder District Concept 5**

Source: U.S. Census Bureau, 2020 Census Redistricting Data  
 Prepared by: City of Madison Planning Division  
 September 14, 2021

Race	Hispanic Origin	People of Color
------	-----------------	-----------------

Alder District	Total Population (Apr. 1 2020 population, Aug. 1 2021 geography + Town of Madison)	Deviation from 13,739		White (Includes Hispanic White)		Non-White							Hispanic				(Non-White & Hispanic White)		Population 18 or Over		Housing Units				
		#	%	#	%	Black	American Indian and Alaska Native	Asian	Native Hawaiian and Other Pacific Islander	Some Other Race	Two or More Races	Sub Total		White Hispanic	Non-White Hispanic	Sub Total		Sub Total		#	%	#	Vacant	Occupied	
												#	%			#	%	#	%					#	%
1	13,732	-7	-0.05%	10,302	75.0%	379	28	1,943	6	265	809	3,430	25.0%	183	584	767	5.6%	3,613	26.3%	11,533	84.0%	7,014	244	6,770	96.5%
2	13,460	-279	-2.07%	10,504	78.0%	448	58	1,174	6	237	1,033	2,956	22.0%	287	637	924	6.9%	3,243	24.1%	12,810	95.2%	6,923	377	6,546	94.6%
3	13,212	-527	-3.99%	8,997	68.1%	1,481	60	1,043	6	614	1,011	4,215	31.9%	223	1,012	1,235	9.3%	4,438	33.6%	10,594	80.2%	5,815	239	5,576	95.9%
4	14,232	493	3.46%	10,652	74.8%	611	39	1,767	26	269	868	3,580	25.2%	325	563	888	6.2%	3,905	27.4%	13,590	95.5%	8,287	417	7,870	95.0%
5	14,223	484	3.40%	9,626	67.7%	292	52	2,931	4	274	1,044	4,597	32.3%	179	571	750	5.3%	4,776	33.6%	12,663	89.0%	5,029	401	4,628	92.0%
6	13,417	-322	-2.40%	11,079	82.6%	765	75	337	0	253	908	2,338	17.4%	189	538	727	5.4%	2,527	18.8%	11,659	86.9%	7,429	295	7,134	96.0%
7	14,397	658	4.57%	10,718	74.4%	768	55	1,229	3	492	1,132	3,679	25.6%	272	963	1,235	8.6%	3,951	27.4%	11,306	78.5%	6,236	120	6,116	98.1%
8	14,220	481	3.38%	9,739	68.5%	377	56	2,924	13	251	860	4,481	31.5%	257	444	701	4.9%	4,738	33.3%	13,001	91.4%	4,059	163	3,896	96.0%
9	13,547	-192	-1.42%	9,455	69.8%	441	32	2,535	11	231	842	4,092	30.2%	165	555	720	5.3%	4,257	31.4%	10,848	80.1%	6,689	201	6,488	97.0%
10	13,440	-299	-2.22%	8,133	60.5%	1,940	112	615	4	1,297	1,339	5,307	39.5%	382	2,072	2,454	18.3%	5,689	42.3%	10,343	77.0%	5,943	194	5,749	96.7%
11	13,394	-345	-2.58%	10,989	82.0%	321	46	897	7	191	943	2,405	18.0%	167	487	654	4.9%	2,572	19.2%	10,914	81.5%	6,187	256	5,931	95.9%
12	13,867	128	0.92%	10,301	74.3%	1,440	81	494	6	399	1,146	3,566	25.7%	262	770	1,032	7.4%	3,828	27.6%	11,922	86.0%	7,632	337	7,295	95.6%
13	14,436	697	4.83%	11,849	82.1%	546	58	657	7	235	1,084	2,587	17.9%	172	578	750	5.2%	2,759	19.1%	12,102	83.8%	6,866	315	6,551	95.4%
14	12,957	-782	-6.04%	5,747	44.4%	2,071	168	1,151	10	2,062	1,748	7,210	55.6%	443	3,288	3,731	28.8%	7,653	59.1%	9,987	77.1%	5,862	257	5,605	95.6%
15	13,529	-210	-1.55%	9,953	73.6%	1,308	52	418	8	651	1,139	3,576	26.4%	299	1,112	1,411	10.4%	3,875	28.6%	11,051	81.7%	6,273	187	6,086	97.0%
16	13,863	124	0.89%	10,707	77.2%	1,020	103	513	1	382	1,137	3,156	22.8%	263	758	1,021	7.4%	3,419	24.7%	10,965	79.1%	5,948	163	5,785	97.3%
17	13,420	-319	-2.38%	8,274	61.7%	1,543	106	1,134	16	1,129	1,218	5,146	38.3%	370	1,702	2,072	15.4%	5,516	41.1%	10,882	81.1%	6,619	354	6,265	94.7%
18	13,273	-466	-3.51%	8,774	66.1%	2,055	71	840	4	476	1,053	4,499	33.9%	207	869	1,076	8.1%	4,706	35.5%	10,536	79.4%	5,853	300	5,553	94.9%
19	14,414	675	4.68%	10,278	71.3%	838	53	1,966	5	282	992	4,136	28.7%	150	655	805	5.6%	4,286	29.7%	12,230	84.8%	7,554	354	7,200	95.3%
20	13,755	16	0.12%	8,093	58.8%	2,011	77	1,483	15	874	1,202	5,662	41.2%	261	1,523	1,784	13.0%	5,923	43.1%	10,772	78.3%	6,304	261	6,043	95.9%
<b>Totals</b>	<b>274,788</b>	<b>NA</b>	<b>NA</b>	<b>194,170</b>	<b>70.7%</b>	<b>20,655</b>	<b>1,382</b>	<b>26,051</b>	<b>158</b>	<b>10,864</b>	<b>21,508</b>	<b>80,618</b>	<b>29.3%</b>	<b>5,056</b>	<b>19,681</b>	<b>24,737</b>	<b>9.0%</b>	<b>85,674</b>	<b>31.2%</b>	<b>229,708</b>	<b>83.6%</b>	<b>128,522</b>	<b>5,435</b>	<b>123,087</b>	<b>95.8%</b>