

City of Madison
 Department of Public Works
PARKS DIVISION
 City-County Building, Suite 104
 210 Martin Luther King, Jr. Blvd.
 Madison, WI 53701



PROJECT:
**PENN PARK
 PARKING LOT AND SITE
 IMPROVEMENTS**

**PENN PARK
 2101 FISHER STREET
 MADISON, WI**

Although every effort has been made in preparing these drawings, the user is advised to verify the accuracy of all dimensions and conditions of the site. The user and subcontractors must check all details and dimensions of their trade and be responsible for the same.

ITEM: _____ DATE: 04-06-2017
 Drawn by: MS

PUBLIC WORKS PROJECT #:
7933

SHEET TITLE:

SHEET NUMBER:

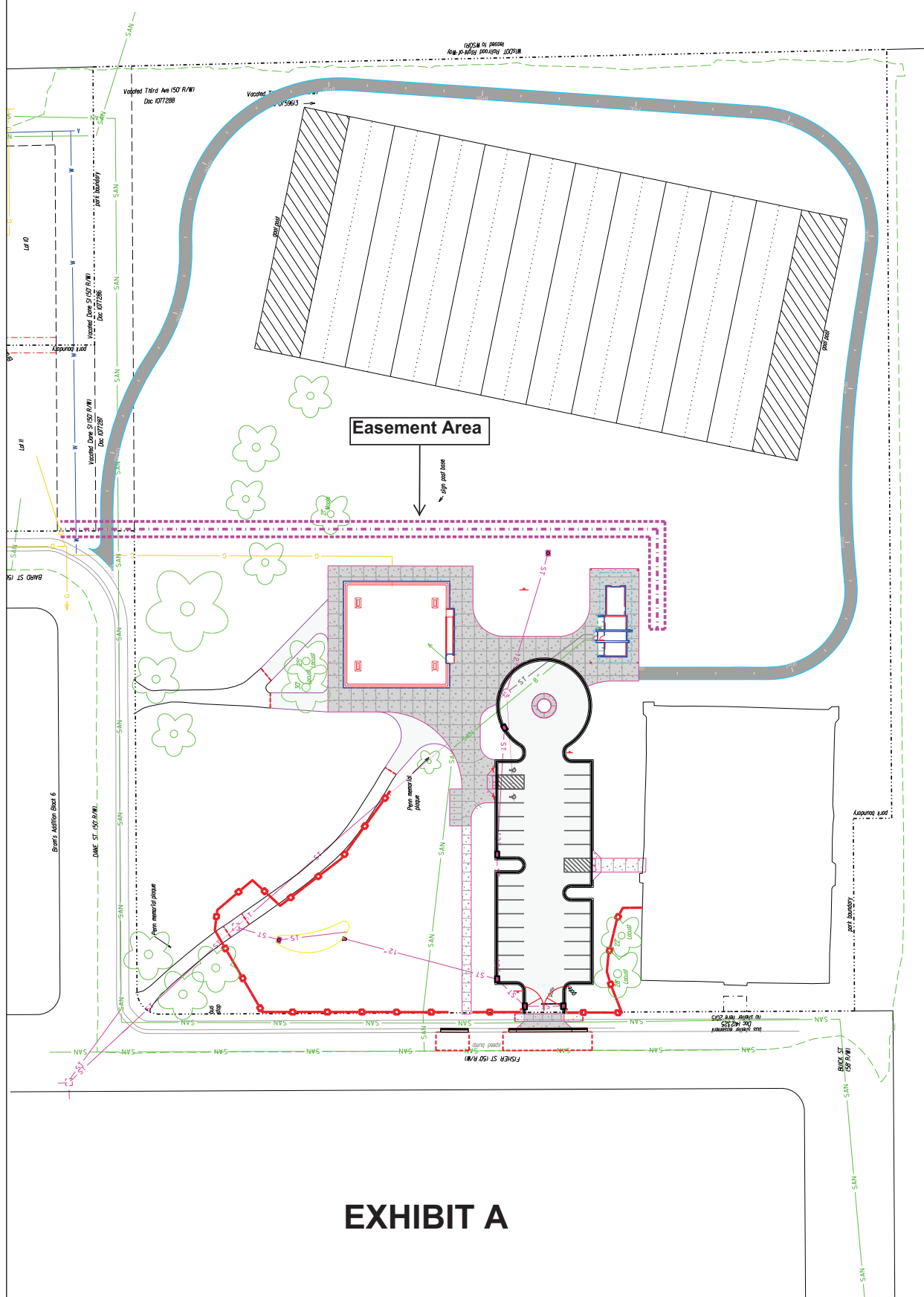


EXHIBIT A