

UNIVERSITY 3000 LLC

3575 University Ave, Madison, WI



LAND USE AND URBAN DESIGN COMMISSION SUBMITTAL

4/7/2025 (Revised: June 16, 2025)
(Final UDC Revisions: July 7, 2025)



JLA
ARCHITECTS

JLA PROJECT NUMBER: W23-0222



1 NORTH ELEVATION - OVERALL
1/16" = 1'-0"



2 SOUTH ELEVATION - OVERALL
1/16" = 1'-0"



3 EAST ELEVATION - OVERALL
1/16" = 1'-0"



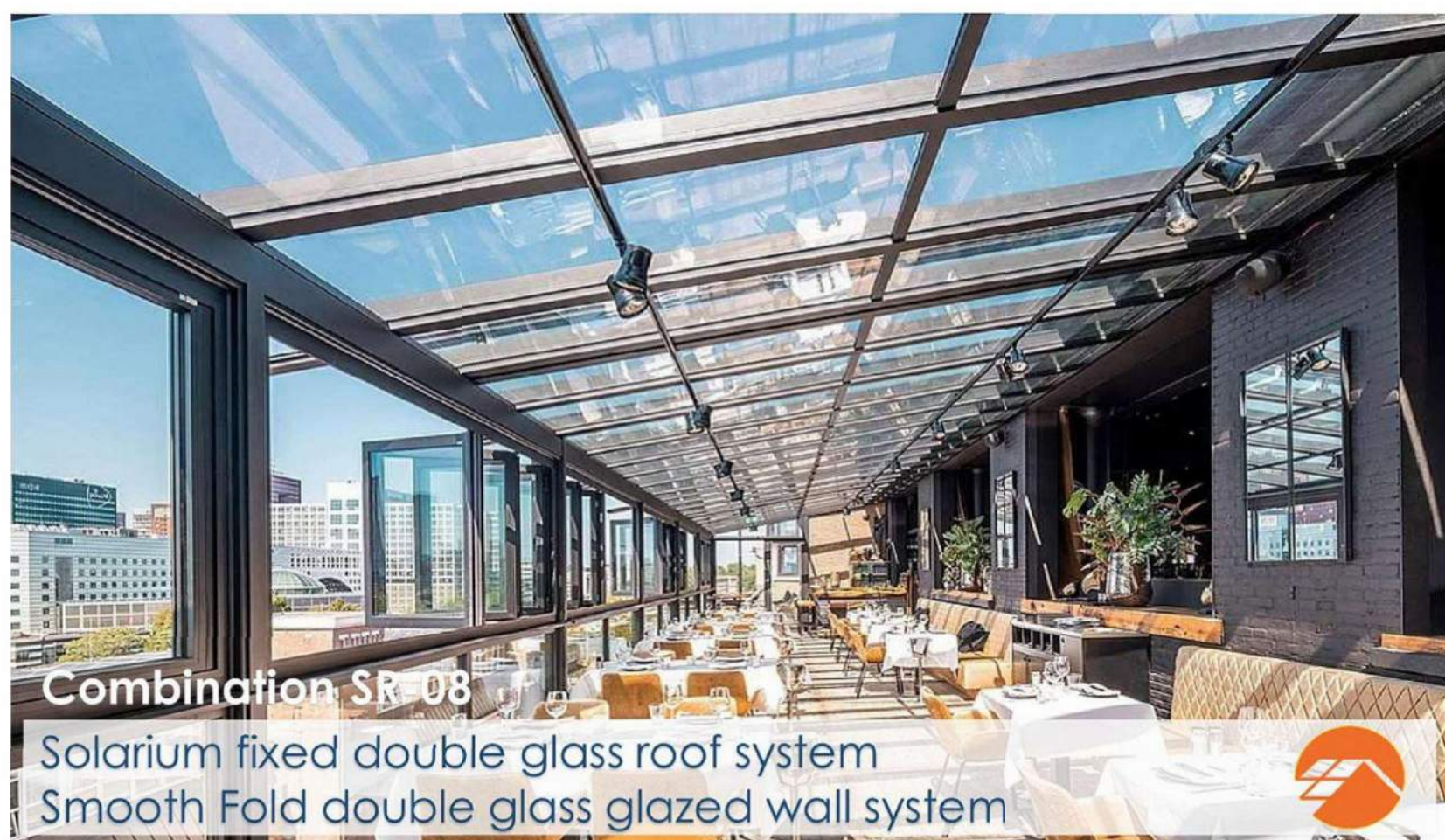
4 WEST ELEVATION - OVERALL
1/16" = 1'-0"



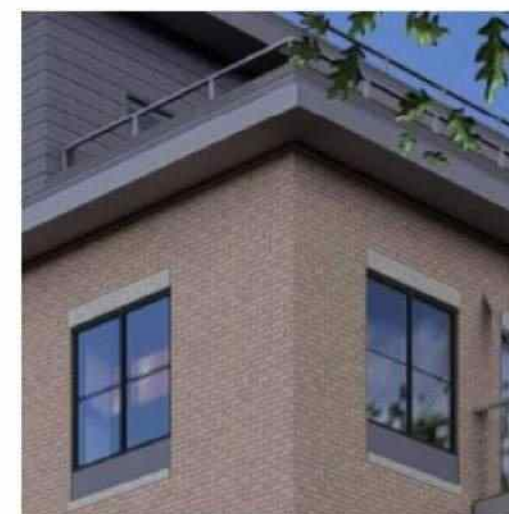
12 OVERHEAD GARAGE DOORS



13 ACCENT CANOPY / ROOF



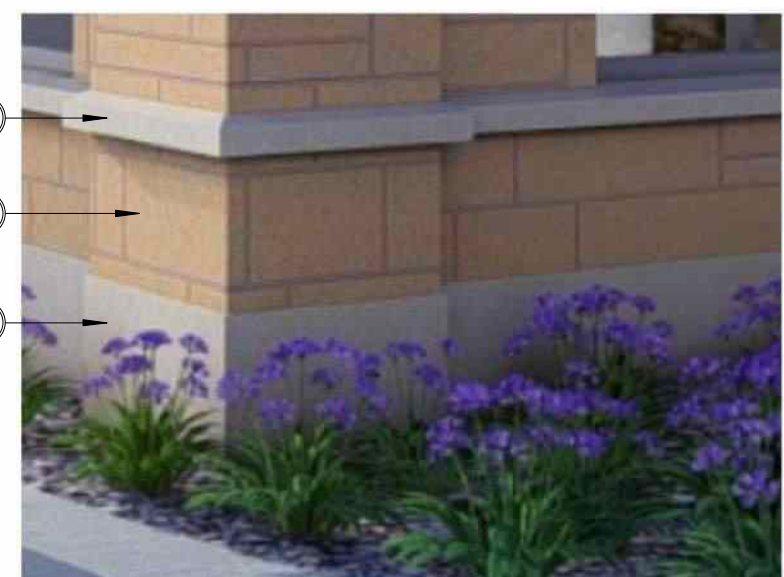
22 SOLARIUM



15 EXTRUDED ALUMINUM EYEBROW



9 STOREFRONT WINDOW



WATERTABLE



6 ACME CHINO THIN BRICK



16 RAILING PROFILE



18 CAST STONE CORNICE PROFILE

EXTERIOR MATERIALS	
MARK	DESCRIPTION
1	COMPOSITE HORIZONTAL SIDING
2	COMPOSITE ACCENT VERTICAL SIDING
3	COMPOSITE ACCENT PANEL SIDING
4	MASONRY - MANUFACTURED STONE
5	PRECAST STONE UNIT
6	MASONRY - THIN SET BRICK
7	PRECAST STONE
8	ALUMINUM ENTRANCE DOOR
9	ALUMINUM STOREFRONT WINDOW
10	VINYL WINDOWS
11	VINYL PATIO DOORS
12	OVERHEAD GARAGE DOOR
13	ACCENT CANOPY / ROOF
14	BALCONY DECK
15	STEEL ENTRY DOOR
16	BALCONY RAILING
17	PRECAST CONCRETE SILL
18	CAST STONE BAND
19	EXTRUDED ALUMINUM EYEBROW
20	ALUMINUM FACIA
21	FLUSH PANEL SOFFIT
22	SOLARIUM

1 HARDIE CEDARMILL
NIGHT GREY



2 HARDIE WOODTONE RUSTIC SERIES
OLD CHERRY



3 HARDIE METAL
TRIM NIGHT GREY



4 ELDORADO LIGHT ASHLAR SANDSTONE



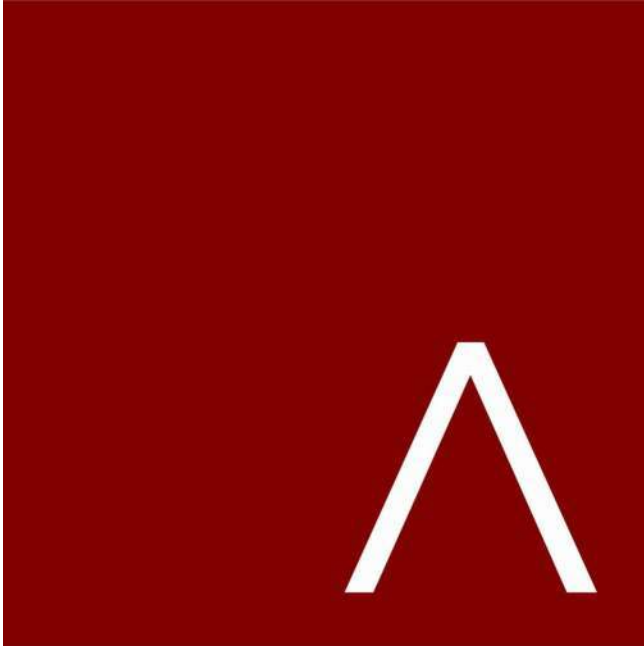
CLEAR WINDOW GLASS



OPAQUE WINDOW GLASS



5 WESTBROOK DARK BUFF PRECAST STONE



JLA
ARCHITECTS
MADISON | MILWAUKEE | DENVER
JLA-AP.COM

JLA PROJECT NUMBER: W23-0222

UNIVERSITY 3000 LLC

LAND USE AND URBAN DESIGN
COMMISSION SUBMITTAL

PROGRESS DOCUMENTS

These documents reflect progress and intent and may be subject to change, including additional detail. These are not final construction documents and should not be used for final bidding or construction-related purposes.

The seal & signature by the Architect of Record for this sheet is affixed to Sheet C001, which identifies this sheet as part of the sealed & signed document set in the set's index list.

DATE OF ISSUANCE: 6/16/2025

REVISION SCHEDULE		
Mark	Description	Date

SHEET TITLE

EXTERIOR
ELEVATIONS &
MATERIALS

SHEET NUMBER

A200



1 NORTH ELEVATION - OVERALL
1/16" = 1'-0"



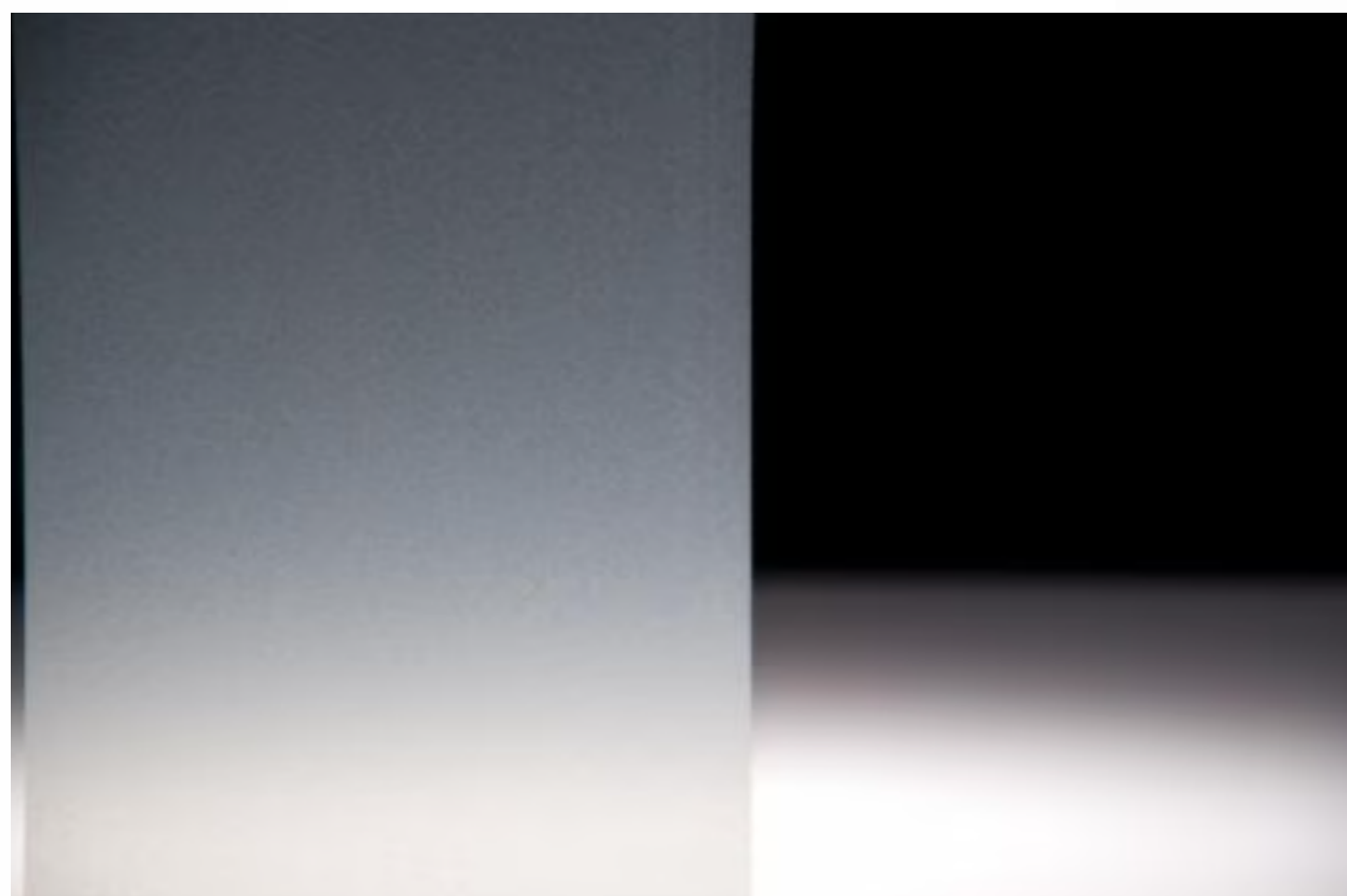
2 SOUTH ELEVATION - OVERALL
1/16" = 1'-0"



3 EAST ELEVATION - OVERALL
1/16" = 1'-0"



4 WEST ELEVATION - OVERALL
1/16" = 1'-0"



5 FROSTED CRYSTAL SMAPLE

EXTERIOR MATERIALS	
MARK	DESCRIPTION
1	COMPOSITE HORIZONTAL SIDING
2	COMPOSITE ACCENT VERTICAL SIDING
3	COMPOSITE ACCENT PANEL SIDING
4	MASONRY - MANUFACTURED STONE
5	PRECAST STONE UNIT
6	MASONRY - THIN SET BRICK
7	PRECAST STONE
8	ALUMINUM ENTRANCE DOOR
9	ALUMINUM STOREFRONT WINDOW
10	VINYL WINDOWS
11	VINYL PATIO DOORS
12	OVERHEAD GARAGE DOOR
13	ACCENT CANOPY / ROOF
14	BALCONY DECK
15	STEEL ENTRY DOOR
16	BALCONY RAILING
17	PRECAST CONCRETE SILL
18	CAST STONE BAND
19	EXTRUDED ALUMINUM EYEBROW
20	ALUMINUM FACIA
21	FLUSH PANEL SOFFIT
22	SOLARIUM

3M™ Dusted and Frosted CRYSTAL Glass Finishes

Technical Data Sheet
Revision 1, July 2020

Product Description

3M™ Dusted and Frosted CRYSTAL Glass Finishes (the "Products") offer the designs of sandblasted (dusted) or etched (frosted) glass, at a fraction of the cost. On a user test and approve basis, you can digitally print on the Products for both customization and personalization options. These Products have a permanent, pressure-sensitive adhesive and a translucent polyester liner for easy cutting. They are available in a Dusted Crystal finish in translucent white and a Frosted Crystal finish in translucent white and gold. The Products can be used in applications on the surface of interior glass, interior perimeter glass (the "Interior Applications"), and vertical exterior glass (the "Exterior Applications").

IMPORTANT NOTE

Please refer to the 3M™ CRYSTAL Installation Guide for additional information on wet application.

Featured Benefits

- Achieve the look of sandblasted or etched glass
- Create custom cut shapes to promote your brand and design
- Provide privacy in interior or exterior spaces while maintaining an open feel
- Easy application - wet application method virtually eliminates air bubbles, simplifying and speeding application
- Expected Performance Life is 15 years for interior applications on non-perimeter glass (see Warranty).

Product Characteristics

The values in these tables are typical, and are based on test data deemed reliable but are not warranted.

Characteristic	Value
Material	Film
Adhesive	Pressure-sensitive acrylic, permanent
Release Liner	Silicone-coated polyester
Thickness	Film + Adhesive 3.2 mils (81 microns) - 7725SE-314 Dusted Crystal White 4.7 mils (120 microns) - 7725SE-324 Frosted Crystal White
Release Liner	3.5 mils (89 microns)
Maximum Roll Size	60 in. x 150 ft. (152 cm x 46 m) - 7725SE-314 Dusted White & 7725SE-324 Frosted Crystal White 48 in. x 150 ft. (122 cm x 46 m) - All colors
Maximum Weight	62 lb. (28 kg) (approx.) 60 in. x 150 ft. roll 49 lb. (22 kg) (approx.) 48 in. x 150 ft. roll
Products	7725SE-314: Dusted Crystal White VENTURE No Logo Liner Dusted Crystal White 7725SE-324: Frosted Crystal White VENTURE Smooth Frosted Crystal White 7725SE-331: Smooth Frosted Crystal Gold

Product Performance

The values in these tables are typical, and are based on test data deemed reliable but are not warranted.

Characteristics	Value
Adhesion 24 hours after application *	Acrylic, Glass, and Polycarbonate 4 lb./in. (18 N/25mm)
Fire Resistance	When used in Interior Applications on glass, Products have Class A rating per ASTM E84 Test Method, as defined by NFPA 101 "Life Safety Code"
VOC Emissions Test	Compliant as low emitting per CA Specification 01350, tested per CDPH Standard Method V13-0103
Tensile Strength Minimum	Dusted Crystal 5 lb./in. at 73°F (23N / 25mm at 23°C)
	Frosted Crystal 3.5 lb./in. at 73°F (15N / 25mm at 23°C)

* Test specimens were applied to the substrate and conditioned at 68 F (20 C), then peel tested at 180 degree at 150 degrees at 150 degrees (300 mm) per minute.

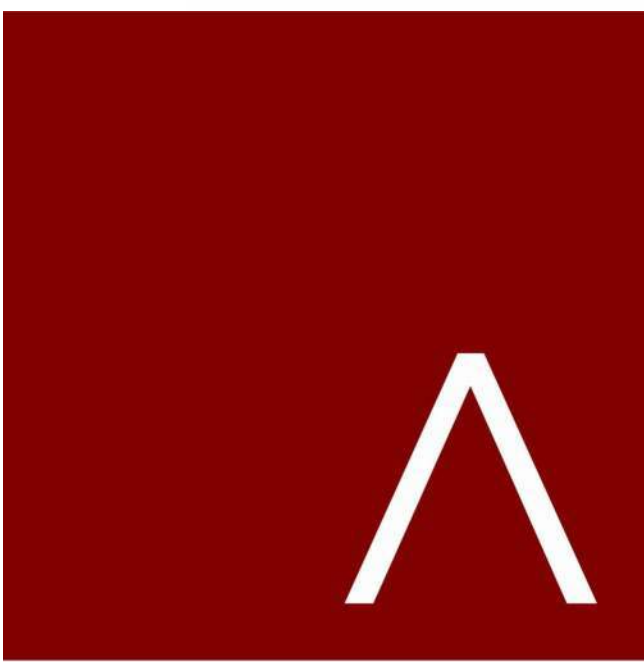
Optical Performance Characteristics

The optical values are calculated as theoretical values and compiled with existing data. The values in these tables are typical, and are based on test data deemed reliable but are not warranted.

Characteristic	Dusted CRYSTAL	Frosted CRYSTAL
Shading Coefficient *	0.92	0.92
Reflectance *	7%	10%
Solar Heat (%)	Transmittance *	64%
	Absorbance *	26%
Visible Light (%)	Reflectance *	12%
	Transmittance *	22%
UV (%)	Transmittance *	27%

* As measured on 6mm clear glass.

3M



JLA
ARCHITECTS
MADISON | MILWAUKEE | DENVER
JLA-AP.COM

JLA PROJECT NUMBER: W23-0222

UNIVERSITY 3000

LAND USE AND URBAN DESIGN
COMMISSION SUBMITTAL

PROGRESS DOCUMENTS

These documents reflect progress and intent and may be subject to change, including additional detail. These are not final construction documents and should not be used for final bidding or construction-related purposes.

The seal & signature by the Architect of Record for this sheet is affixed to Sheet C001, which identifies this sheet as part of the sealed & signed document set in the set's index list.

DATE OF ISSUANCE

REVISION SCHEDULE

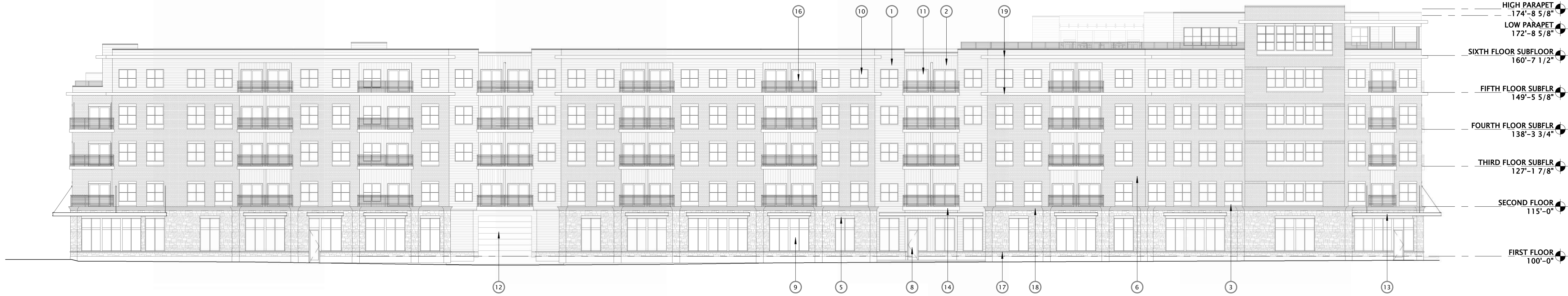
Mark	Description	Date
------	-------------	------

SHEET TITLE

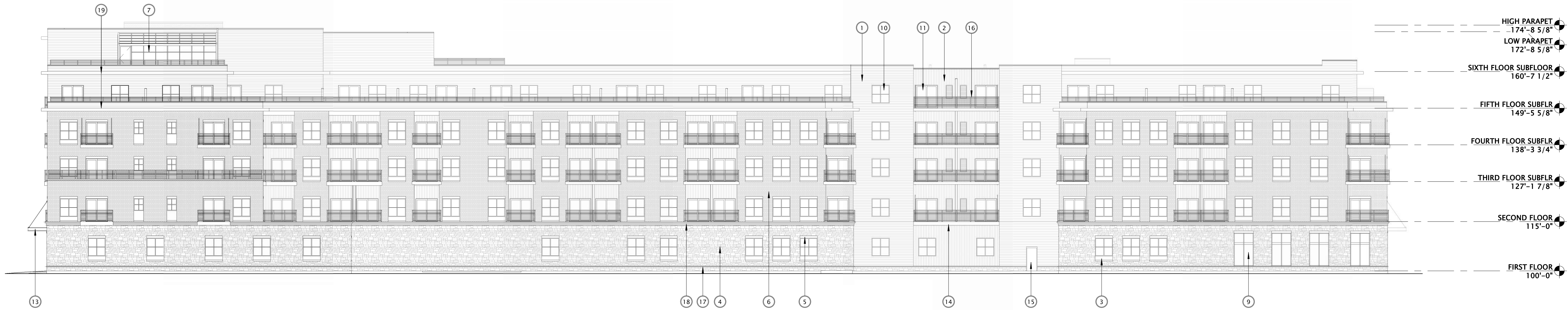
WINDOW
FILM
DETAILS

SHEET NUMBER

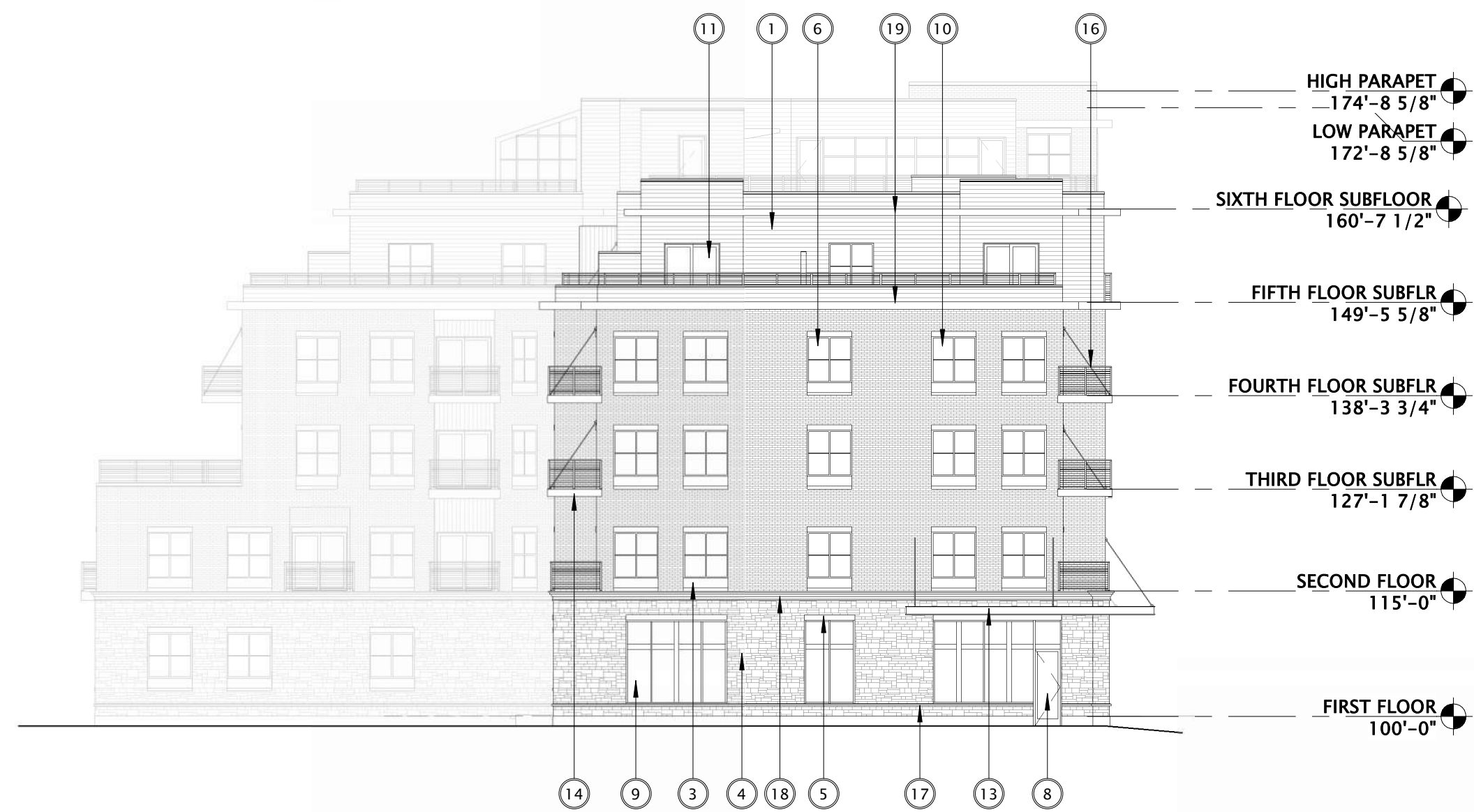
A200.1



1 NORTH ELEVATION - OVERALL (B&W)
1/16" = 1'-0"



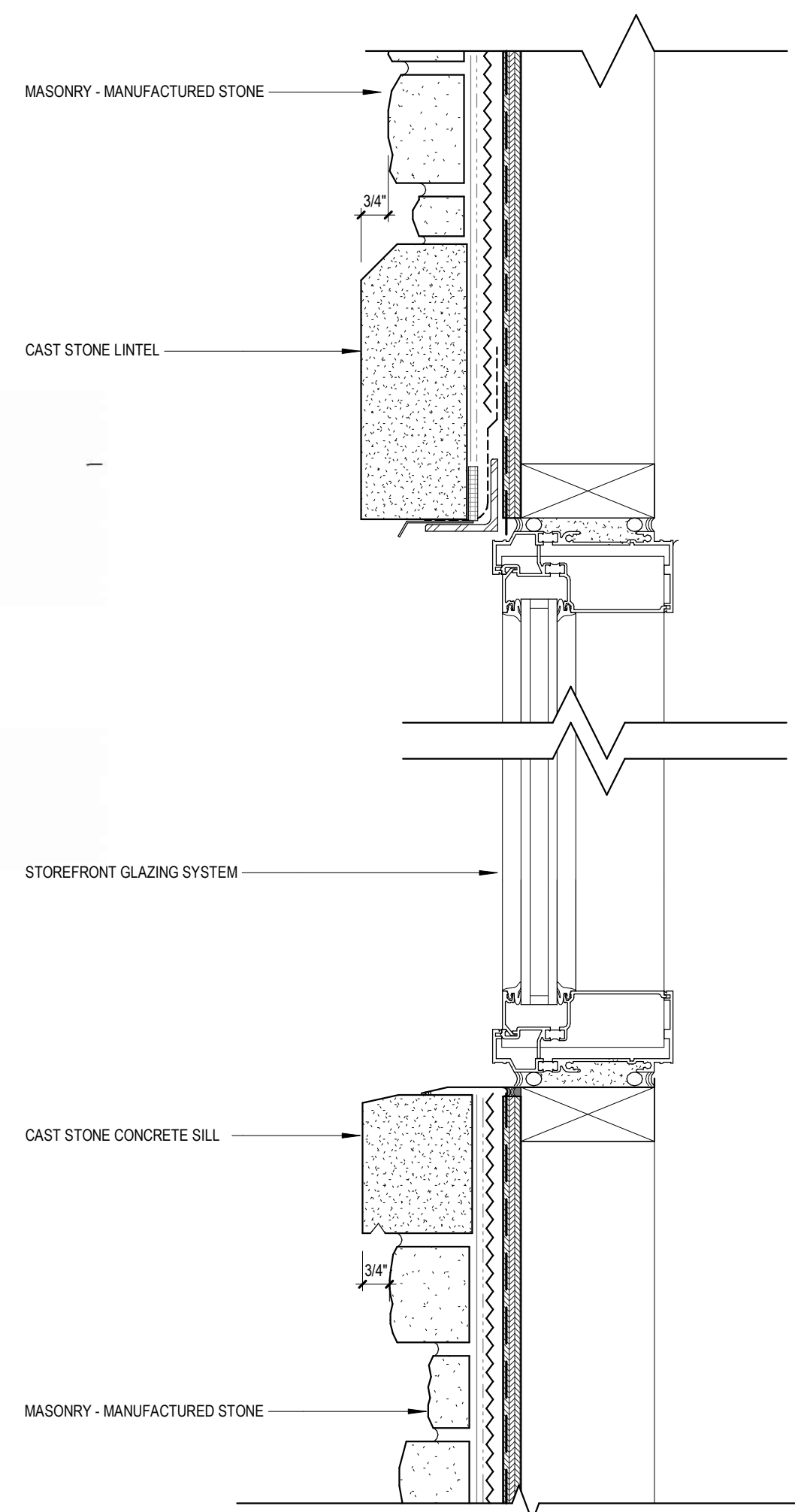
2 SOUTH ELEVATION - OVERALL (B&W)
1/16" = 1'-0"



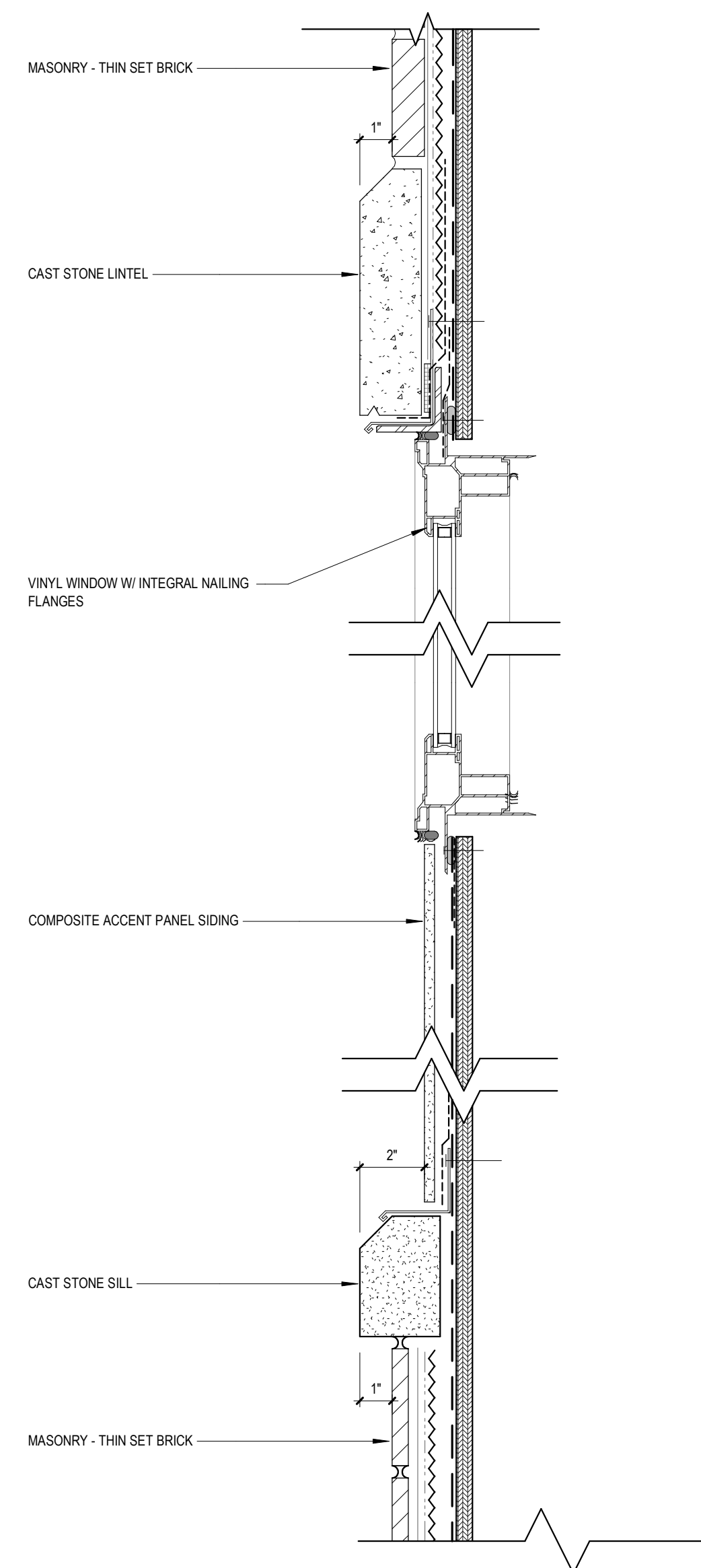
3 EAST ELEVATION - OVERALL (B&W)
1/16" = 1'-0"



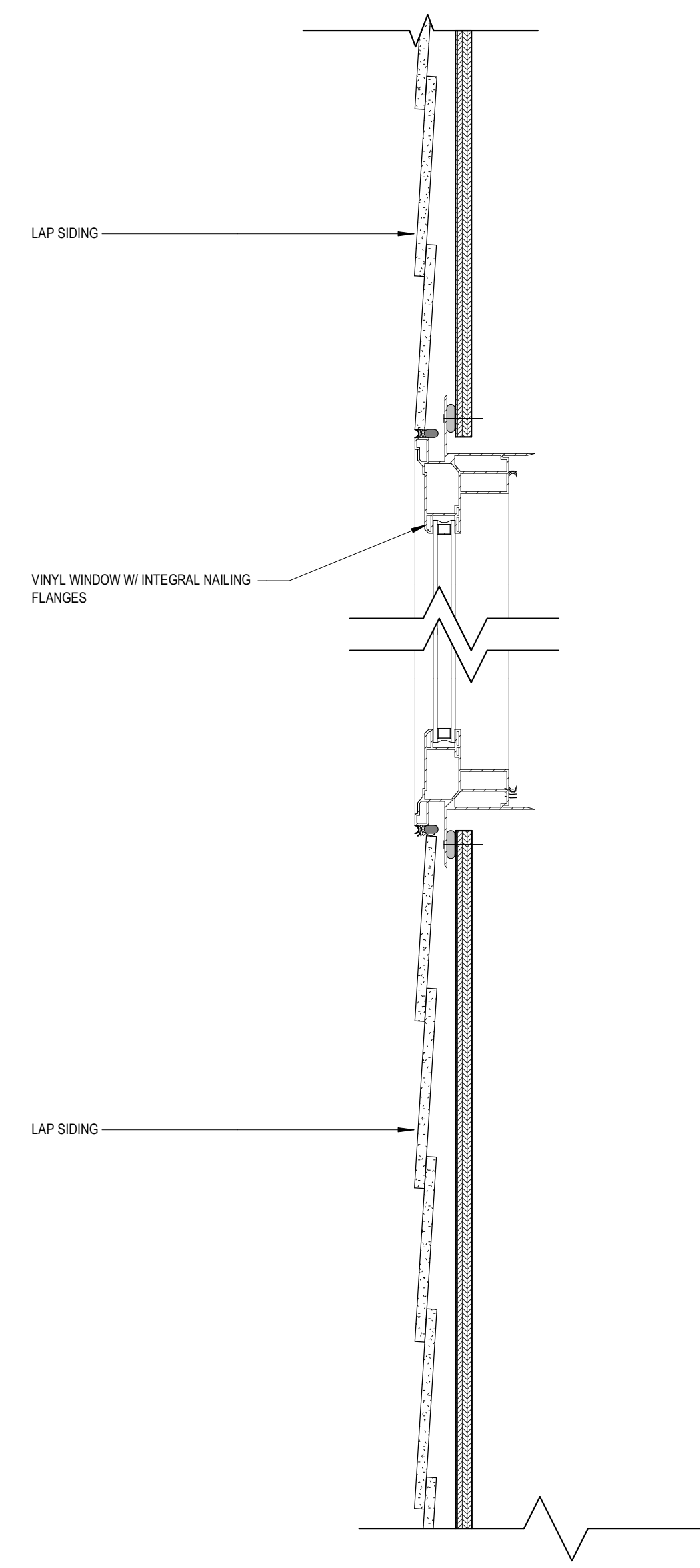
4 WEST ELEVATION - OVERALL (B&W)
1/16" = 1'-0"



5 STOREFRONT HEAD AND SILL AT MANUFACTURED STONE
3" = 1'-0"

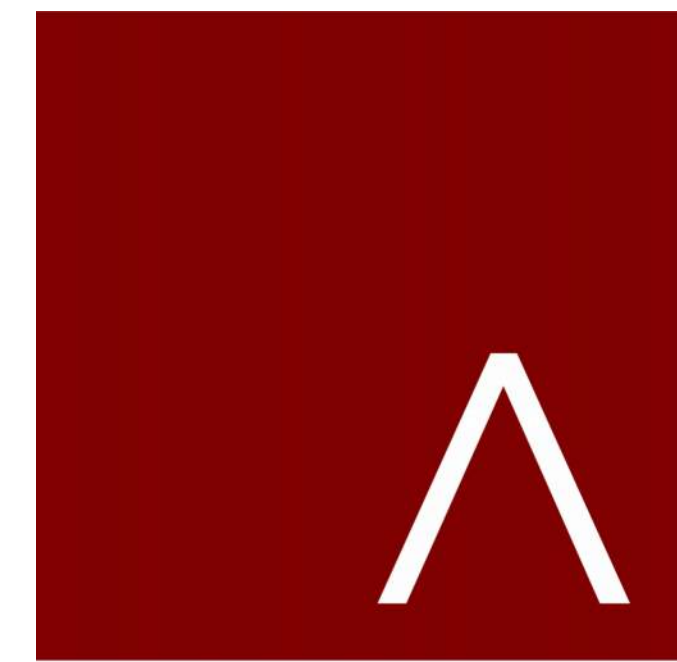


6 VINYL WINDOW HEAD AND SILL AT RESIDENTIAL UNITS - MASONRY
3" = 1'-0"



7 WINDOW HEAD AND SILL AT RESIDENTIAL UNITS - SIDING
3" = 1'-0"

EXTERIOR MATERIALS	
MARK	DESCRIPTION
1	COMPOSITE HORIZONTAL SIDING
2	COMPOSITE ACCENT VERTICAL SIDING
3	COMPOSITE ACCENT PANEL SIDING
4	MASONRY - MANUFACTURED STONE
5	PRECAST STONE LINTEL
6	MASONRY - THIN SET BRICK
7	SOLARUM
8	ALUMINUM ENTRANCE DOOR
9	ALUMINUM STOREFRONT WINDOW
10	VINYL WINDOWS
11	VINYL PATIO DOORS
12	OVERHEAD GARAGE DOOR
13	ACCENT CANOPY / ROOF
14	BALCONY DECK
15	STEEL ENTRY DOOR
16	BALCONY RAILING
17	WATERTABLE
18	METAL CORNICE PROFILE
19	EXTRUDED ALUMINUM EYEBROW



JLA
ARCHITECTS
MADISON | MILWAUKEE | DENVER
JLA-AP.COM

JLA PROJECT NUMBER: W23-0222

UNIVERSITY 3000 LLC

LAND USE AND URBAN DESIGN
COMMISSION SUBMITTAL

PROGRESS DOCUMENTS
These documents reflect progress and intent and may be subject to change, including additional detail. These are not final construction documents and should not be used for final bidding or construction-related purposes.

DATE OF ISSUANCE 6/16/2025

REVISION SCHEDULE		
Mark	Description	Date

SHEET TITLE

EXTERIOR
ELEVATIONS - BLACK
& WHITE

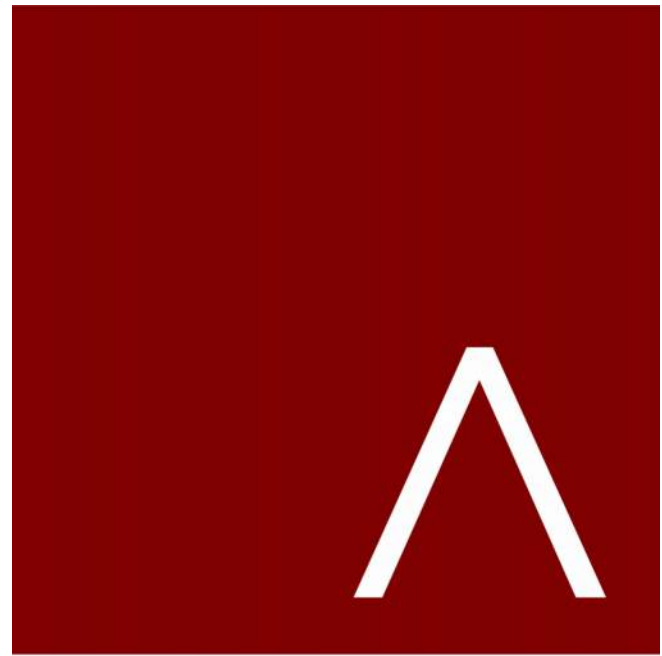
SHEET NUMBER

A201



PERSPECTIVE WEST - DUSK

4/4/2025 2:56:58 PM



JLA
ARCHITECTS

MADISON | MILWAUKEE | DENVER
JLA-AP.COM

JLA PROJECT NUMBER: W23-0222

UNIVERSITY 3000 LLC

LAND USE AND URBAN DESIGN
COMMISSION SUBMITTAL

PROGRESS DOCUMENTS

These documents reflect progress and intent and may be subject to change, including additional detail. These are not final construction documents and should not be used for final bidding or construction-related purposes.

DATE OF ISSUANCE 6/16/2025

REVISION SCHEDULE		
Mark	Description	Date

SHEET TITLE

EXTERIOR
RENDERINGS

SHEET NUMBER

A205



PERSPECTIVE NORTH



JLA
ARCHITECTS
MADISON | MILWAUKEE | DENVER
JLA-AP.COM

JLA PROJECT NUMBER: W23-0222

UNIVERSITY 3000 LLC

LAND USE AND URBAN DESIGN
COMMISSION SUBMITTAL

PROGRESS DOCUMENTS

These documents reflect progress and intent and may be subject to change, including additional detail. These are not final construction documents and should not be used for final bidding or construction-related purposes.

DATE OF ISSUANCE 6/16/2023

REVISION SCHEDULE		
Mark	Description	Date

SHEET TITLE

EXTERIOR
RENDERINGS

SHEET NUMBER

A206

UNIVERSITY 3000 LLC

3575 University Ave, Madison, WI



LAND USE AND URBAN DESIGN COMMISSION SUBMITTAL

4/7/2025 (Revised: June 16, 2025)
(Final UDC Revisions: July 7, 2025)



JLA
ARCHITECTS

JLA PROJECT NUMBER: W23-0222