

Former Town of Madison

- As of October 31, 2022, Town of Madison ceased to exist
- Cooperative Plan: between City of Madison, City of Fitchburg & Town of Madison (2003)
 - Orderly transfer to city government and continuity of services
- Attachment: adding territory from an adjoining Town based upon processes determined by the municipalities involved through a Cooperative Plan.
- Additional Info regarding Attachment:
<https://www.cityofmadison.com/city-hall/town-of-madison/background>



New to Madison Parks!

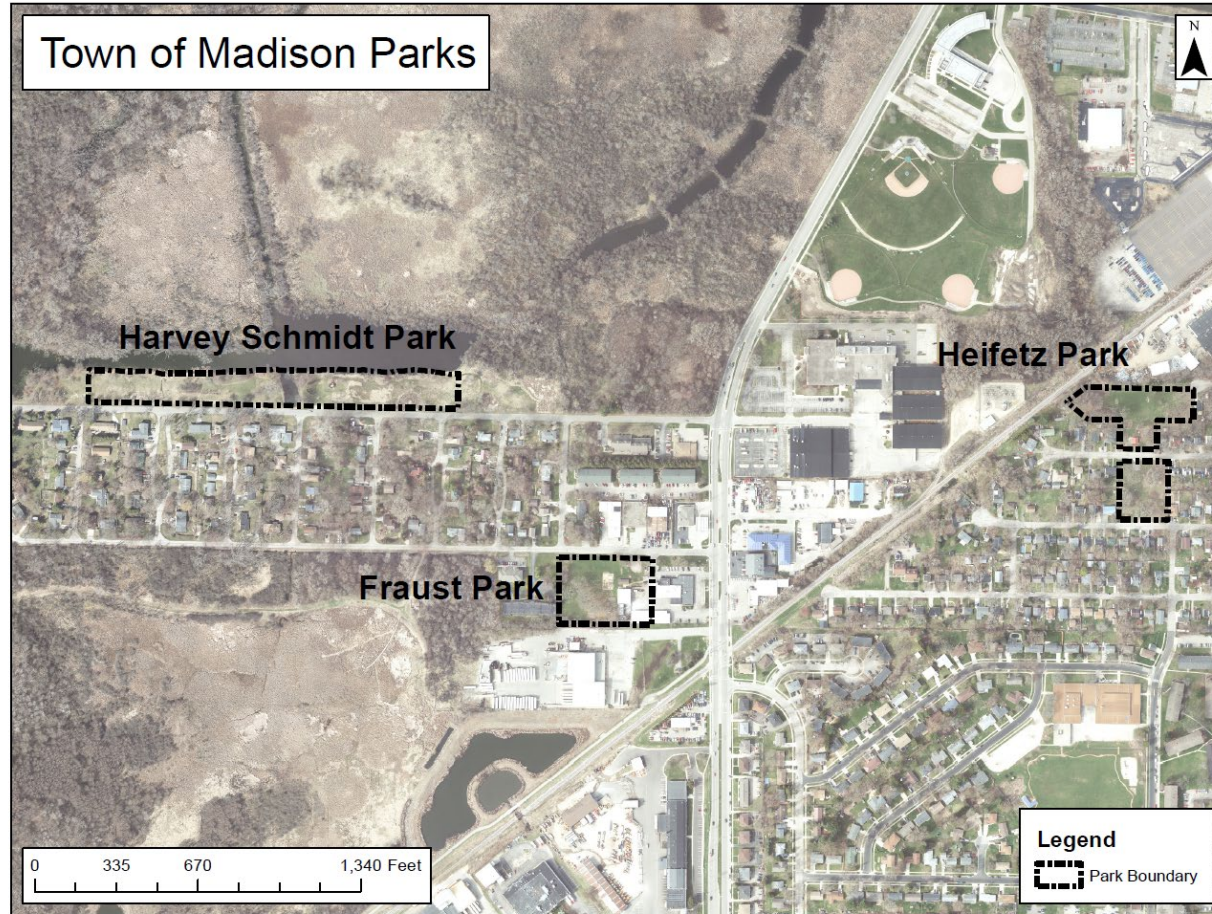
Three new City of Madison Parks with the Attachment of the Town of Madison:

- **Fraust Park – located behind Town Hall on Martin St. Appx 2.1 Acres**
- **Harvey Schmidt Park – located along Carver St. from Field to Dickson (land on both the east and west is owned by the UW) Appx 4.9 Acres**
- **Heifetz Park - located both north and south of Burr Oak Ln. Appx. 3 Acres**





Former Town of Madison Parks



Upcoming Plans for Parks

What happens next? And When?

Immediate Deferred Maintenance Issues (next six months):

- **Playground Safety Hazard Removals** – some removal at both Fraust and Heifetz Parks.
- **Hazard Tree Removal at all three parks based on Arborist risk assessment:**
 - **3 at Heifetz** – standing dead oaks in the back of the park.
 - **10 at Fraust** – mostly standing dead ash. One dead oak.
 - **9 at Harvey Schmidt** – variety of standing dead trees.

Planning Forward (starting soon, over a 2-4 year window):

- **Continue general maintenance patterns, with some modes adjustments.**
- **Plant new trees.**
- **Creation of Master Plans for all three Parks.**
 - **Engage with the community**
 - **Plan for new amenities (playgrounds, etc)**



Frequently Asked Questions

- Parks FAQ's:
 - <https://www.cityofmadison.com/parks/documents/Madison%20Parks%20FAQ%20Final.pdf>
- FAQ's for All City Services:
 - <https://www.cityofmadison.com/city-hall/town-of-madison/service-changes#parks>

