

Mailed 2/1/08

NOTICE OF PUBLIC HEARING

The Common Council of the City of Madison having before it for consideration a proposed ordinance relating to zoning and city planning,

NOTICE IS HEREBY GIVEN, that a public hearing will be held in the Council Chambers, Room 201, in the City-County Building on Monday, February 11, 2008 at 6:00 p.m. before the Plan Commission, where opportunity will be afforded to all interested in being heard; and on Tuesday, February 26, 2008 at 6:45 p.m. before the regular meeting of the Common Council, at which time action on the ordinance will be considered.

Public Hearing items may be called at any time after the beginning of the Plan Commission public hearings – 6:00 pm. Anyone wishing to speak on an item must fill out a registration slip and give it to the person running the meeting. The registration slips are on a table near the front of the meeting room, just inside the doors to the room.

The Plan Commission uses a “consent agenda,” which means that the Commission can consider any item at 6:00 pm if there are no registrants wishing to speak in opposition, regardless of where the item is listed on the agenda.

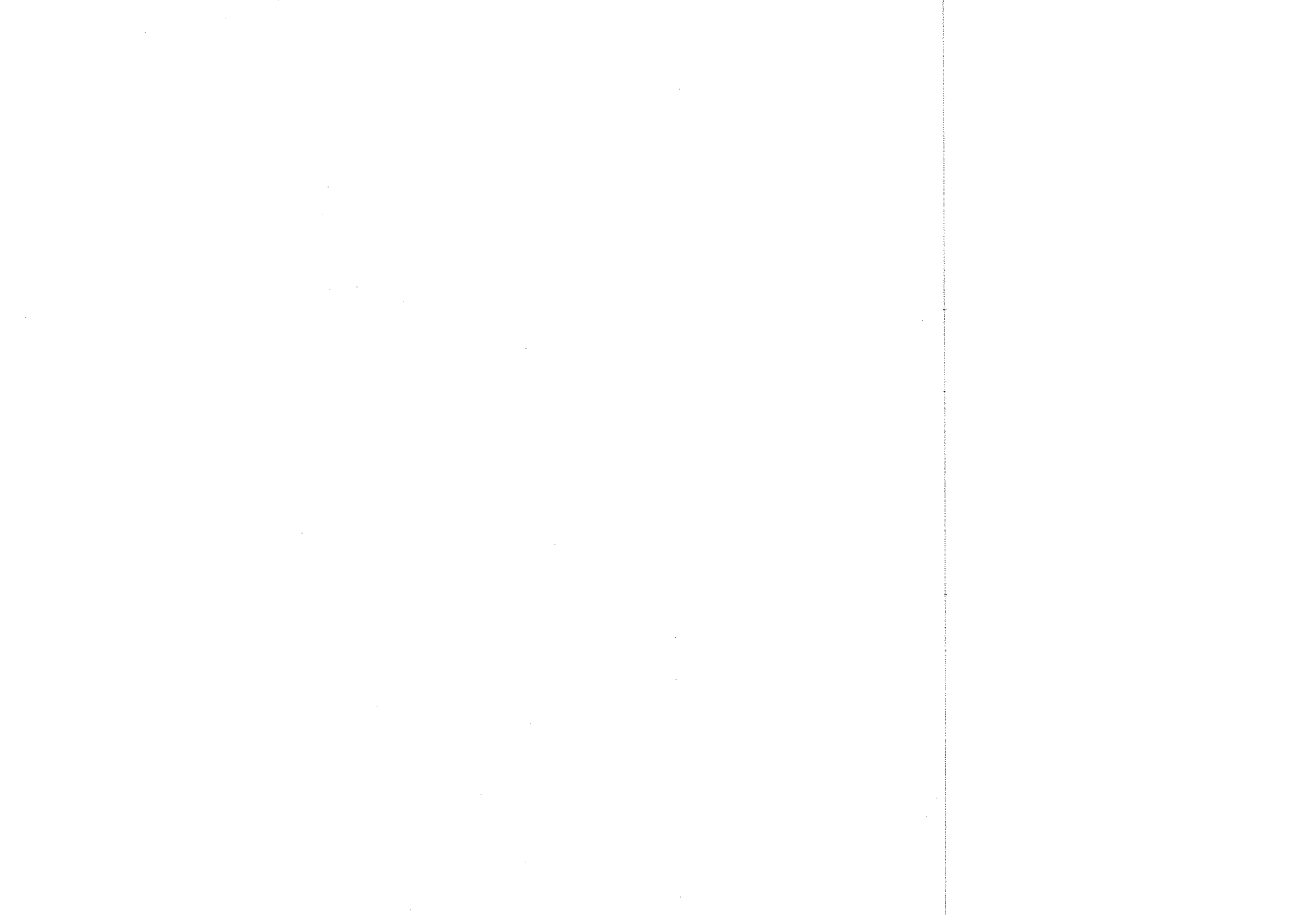
ORDINANCE FILE #08830

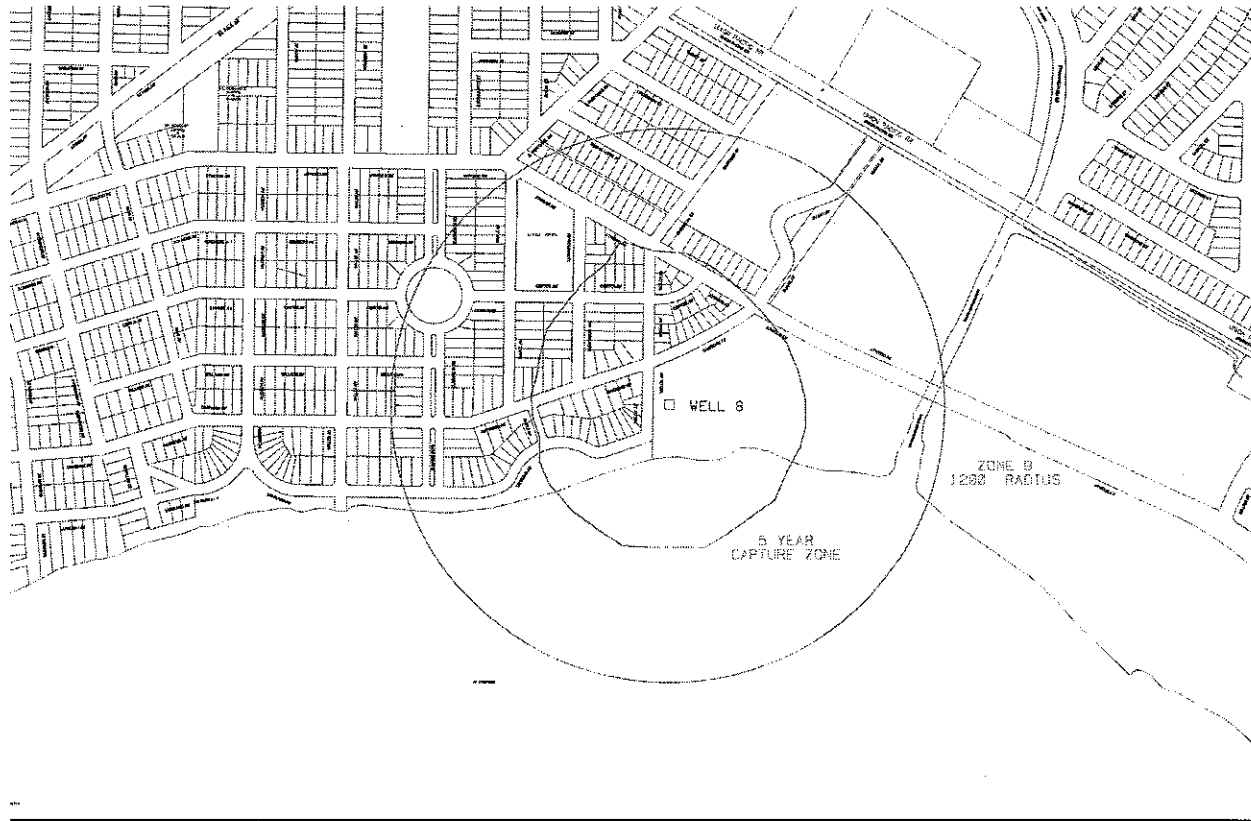
The Common Council of the City of Madison do hereby ordain as follows:

1. Subdivision (h) of Subsection (1) entitled “Establishment of Zoning Districts” of Section 28.06 entitled “Zoning Districts And Zoning District Maps” of the Madison General Ordinances is amended to read as follows:

“(h) Wellhead Protection Districts.

1. WP-28 Wellhead Protection District No. 28. See 28.107(6).
2. WP-26 Wellhead Protection District No. 26. See 28.107(7).
3. WP-15 Wellhead Protection District No. 15. See 28.107(8).
4. WP-29 Wellhead Protection District No. 29. See 28.107(9).
5. WP-9 Wellhead Protection District No. 9. See 28.107(10).
6. WP-14 Wellhead Protection District No. 14. See 28.107(11).
7. WP-30 Wellhead Protection District No. 30. See 28.107(12).
8. WP-6 Wellhead Protection District No. 6. See 28.107(13).
9. WP-612 Wellhead Protection District No. 12. See 28.107(14).
10. WP-618 Wellhead Protection District No. 18. See 28.107(15).
11. WP-624 Wellhead Protection District No. 24. See 28.107(16).
12. WP-7 Wellhead Protection District No. 7. See 28.107(17).
13. WP-8 Wellhead Protection District No. 8. See 28.107(18).
14. WP-10 Wellhead Protection District No. 10. See 28.107(19).
15. WP-11 Wellhead Protection District No. 11. See 28.107(20).
16. WP-13 Wellhead Protection District No. 13. See 28.107(21).
17. WP-16 Wellhead Protection District No. 16. See 28.107(22).
18. WP-17 Wellhead Protection District No. 17. See 28.107(23).
19. WP-19 Wellhead Protection District No. 19. See 28.107(24).
20. WP-20 Wellhead Protection District No. 20. See 28.107(25).

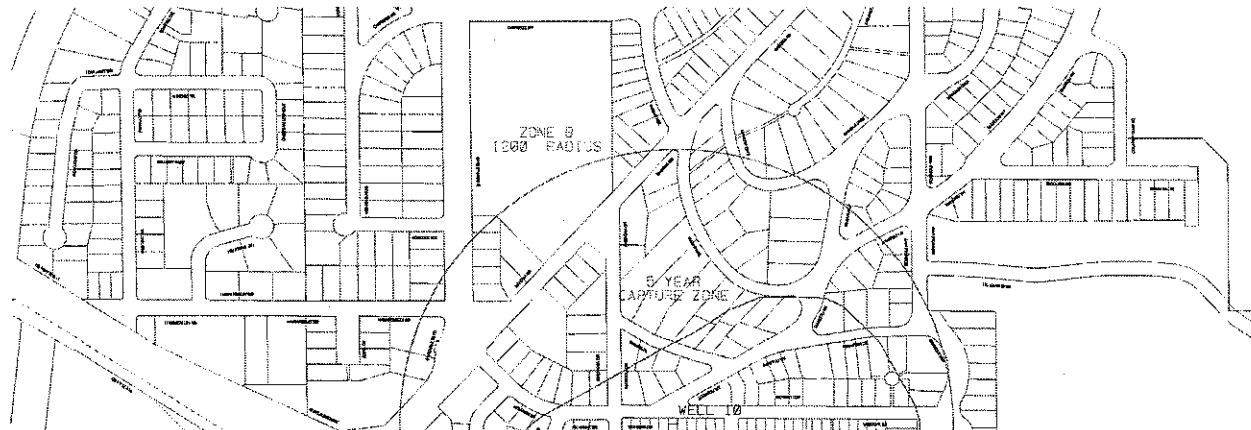




4. Subsection (19) of Section 28 107 entitled "Wellhead Protection Districts" of the Madison General Ordinances is created to read as follows:

"(19) Wellhead Protection District No. 10. The location of Well No 10 and the surrounding Zone A and Zone B are shown in Sec 28 107(19)(a).

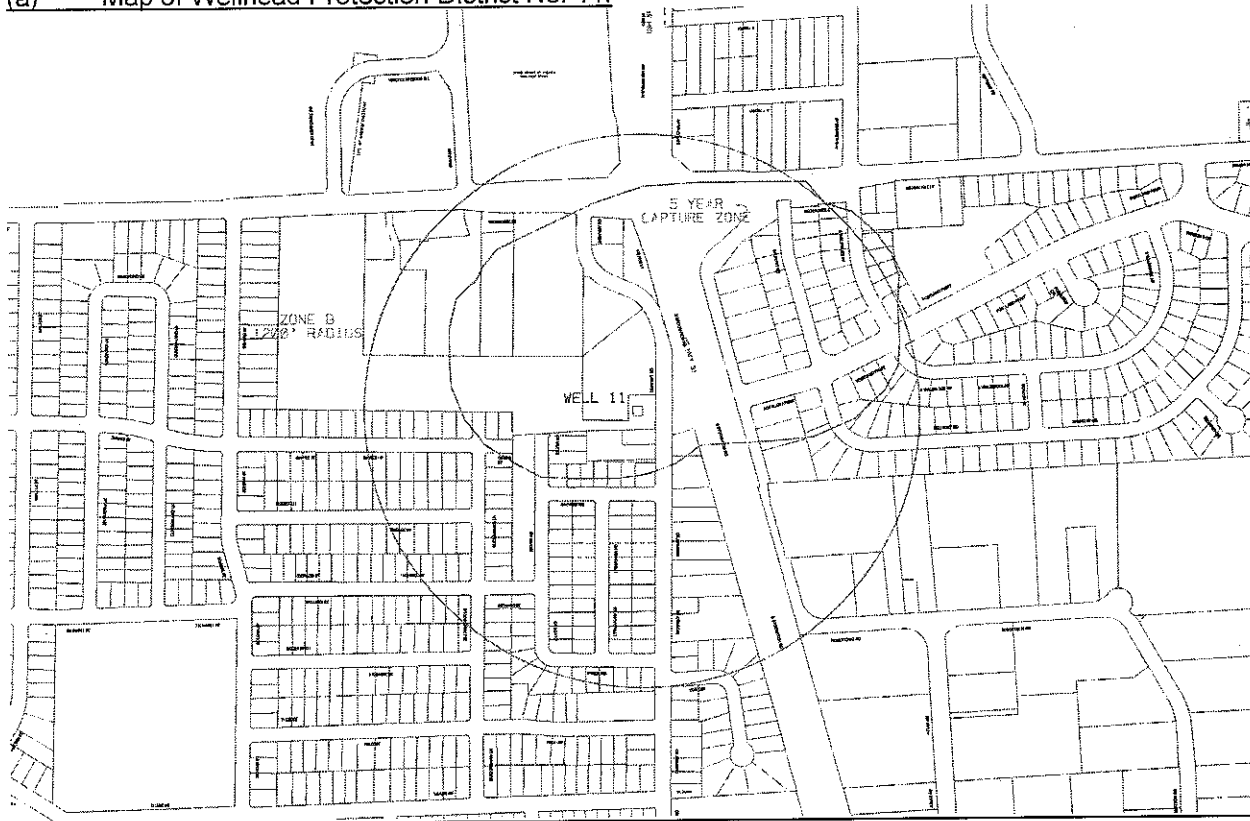
(a) Map of Wellhead Protection District No. 10.



5 Subsection (20) of Section 28.107 entitled "Wellhead Protection Districts" of the Madison General Ordinances is created to read as follows:

"(20) Wellhead Protection District No. 11. The location of Well No 10 and the surrounding Zone A and Zone B are shown in Sec. 28.107(19)(a)

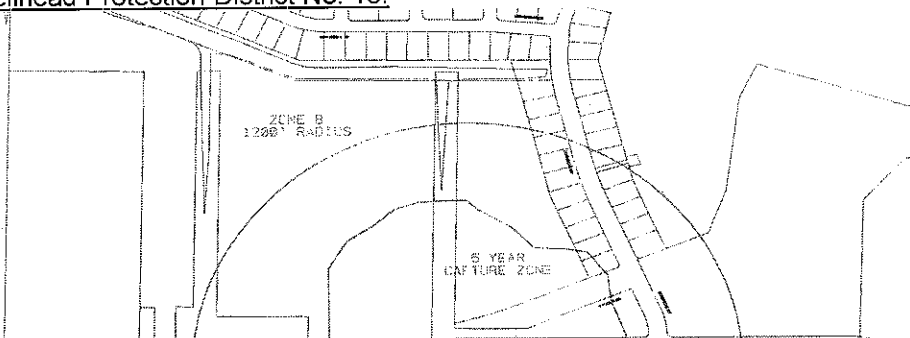
(a) Map of Wellhead Protection District No. 11.



6 Subsection (20) of Section 28.107 entitled "Wellhead Protection Districts" of the Madison General Ordinances is created to read as follows:

"(20) Wellhead Protection District No. 13. The location of Well No 13 and the surrounding Zone A and Zone B are shown in Sec. 28.107(20)(a)

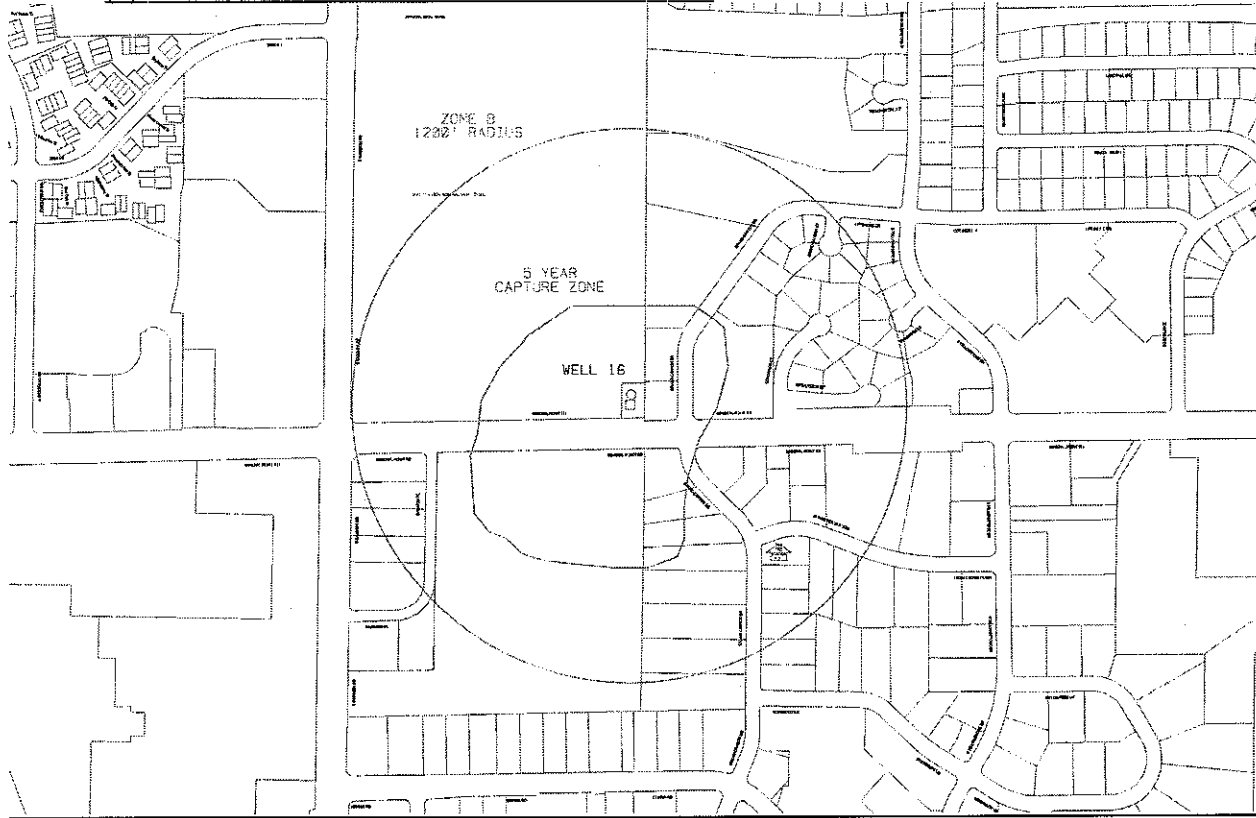
(a) Map of Wellhead Protection District No. 13.



7. Subsection (21) of Section 28 107 entitled "Wellhead Protection Districts" of the Madison General Ordinances is created to read as follows:

"(21) Wellhead Protection District No. 16. The location of Well No. 16 and the surrounding Zone A and Zone B are shown in Sec 28.107(21)(a).

(a) Map of Wellhead Protection District No. 16.



8. Subsection (22) of Section 28 107 entitled "Wellhead Protection Districts" of the Madison General Ordinances is created to read as follows:

"(22) Wellhead Protection District No. 17. The location of Well No. 17 and the surrounding Zone A and Zone B are shown in Sec 28.107(22)(a).

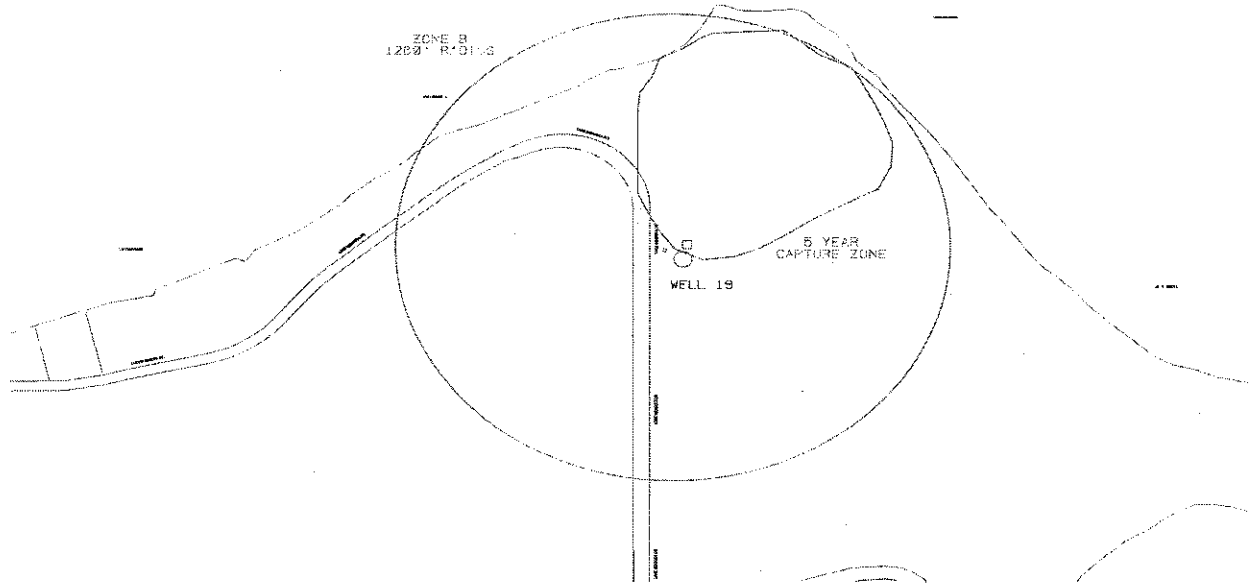
(a) Map of Wellhead Protection District No. 17.



9 Subsection (23) of Section 28.107 entitled "Wellhead Protection Districts" of the Madison General Ordinances is created to read as follows:

"(23) Wellhead Protection District No. 19. The location of Well No 19 and the surrounding Zone A and Zone B are shown in Sec. 28.107(23)(a)

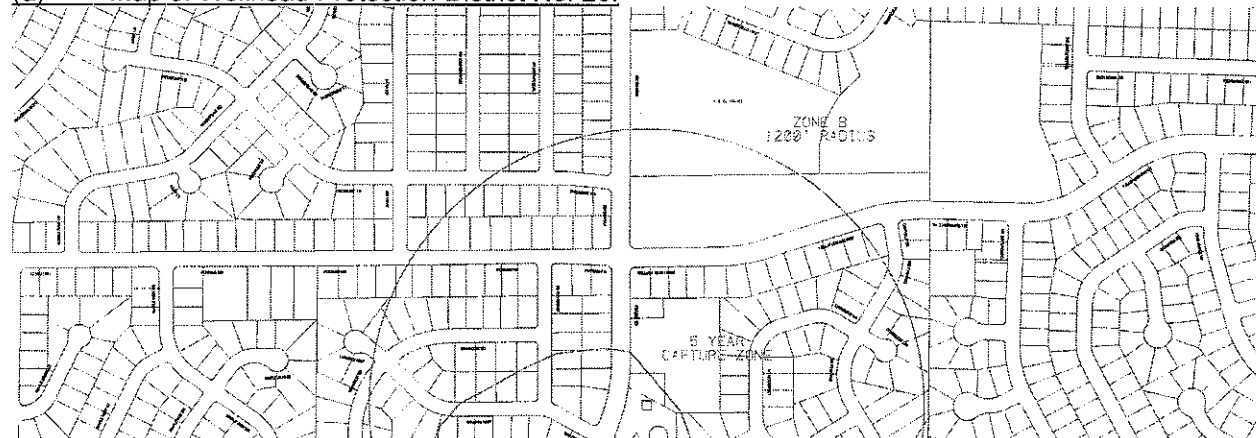
(a) Map of Wellhead Protection District No. 19.



10 Subsection (24) of Section 28.107 entitled "Wellhead Protection Districts" of the Madison General Ordinances is created to read as follows:

"(24) Wellhead Protection District No. 20. The location of Well No 20 and the surrounding Zone A and Zone B are shown in Sec. 28.107(24)(a)

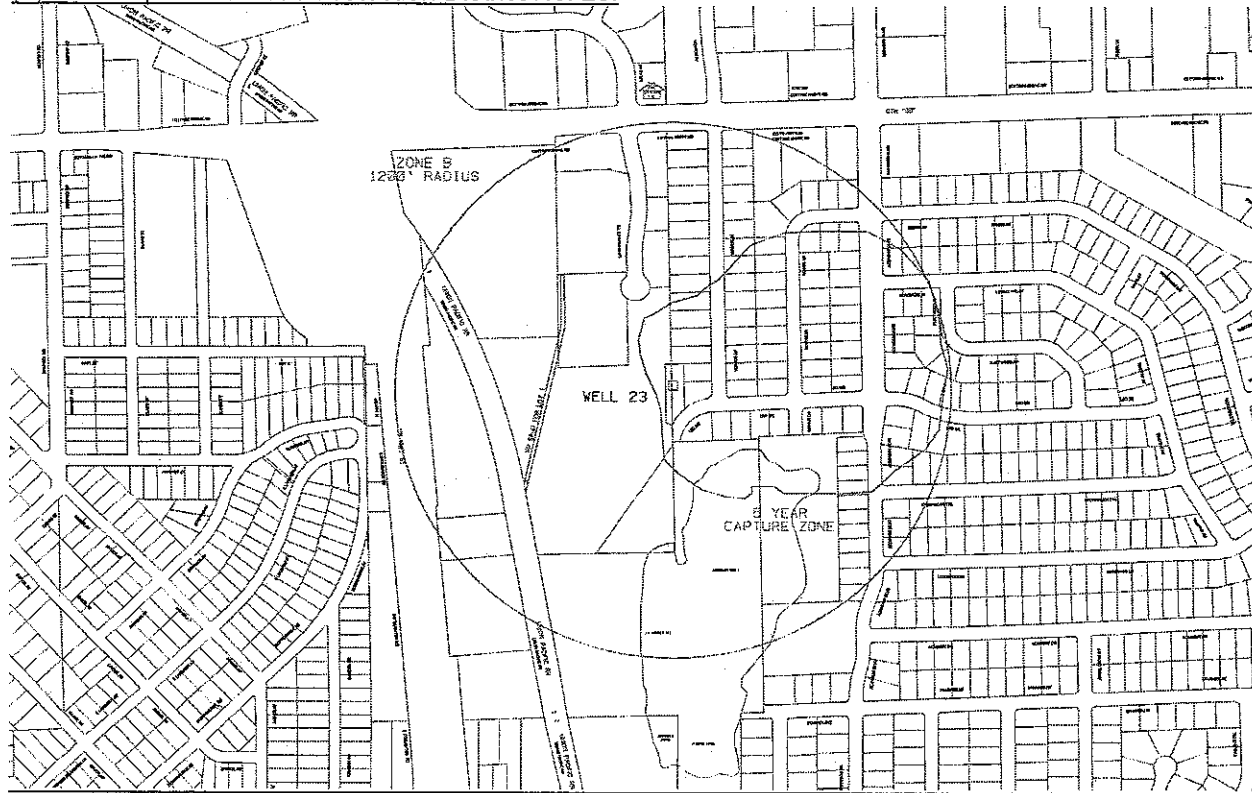
(a) Map of Wellhead Protection District No. 20.



11. Subsection (25) of Section 28.107 entitled "Wellhead Protection Districts" of the Madison General Ordinances is created to read as follows:

"(25) Wellhead Protection District No. 23. The location of Well No 23 and the surrounding Zone A and Zone B are shown in Sec. 28.107(25)(a).

(a) Map of Wellhead Protection District No. 23.



12. Subsection (27) of Section 28.107 entitled "Wellhead Protection Districts" of the Madison General Ordinances is created to read as follows:

"(27) Wellhead Protection District No. 25. The location of Well No. 25 and the surrounding Zone A and Zone B are shown in Sec. 28.107(27)(a).

(a) Map of Wellhead Protection District No. 25.

