



# ***MacArthur Road, MacArthur Court, Larson Court, Sycamore Avenue Reconstruction***

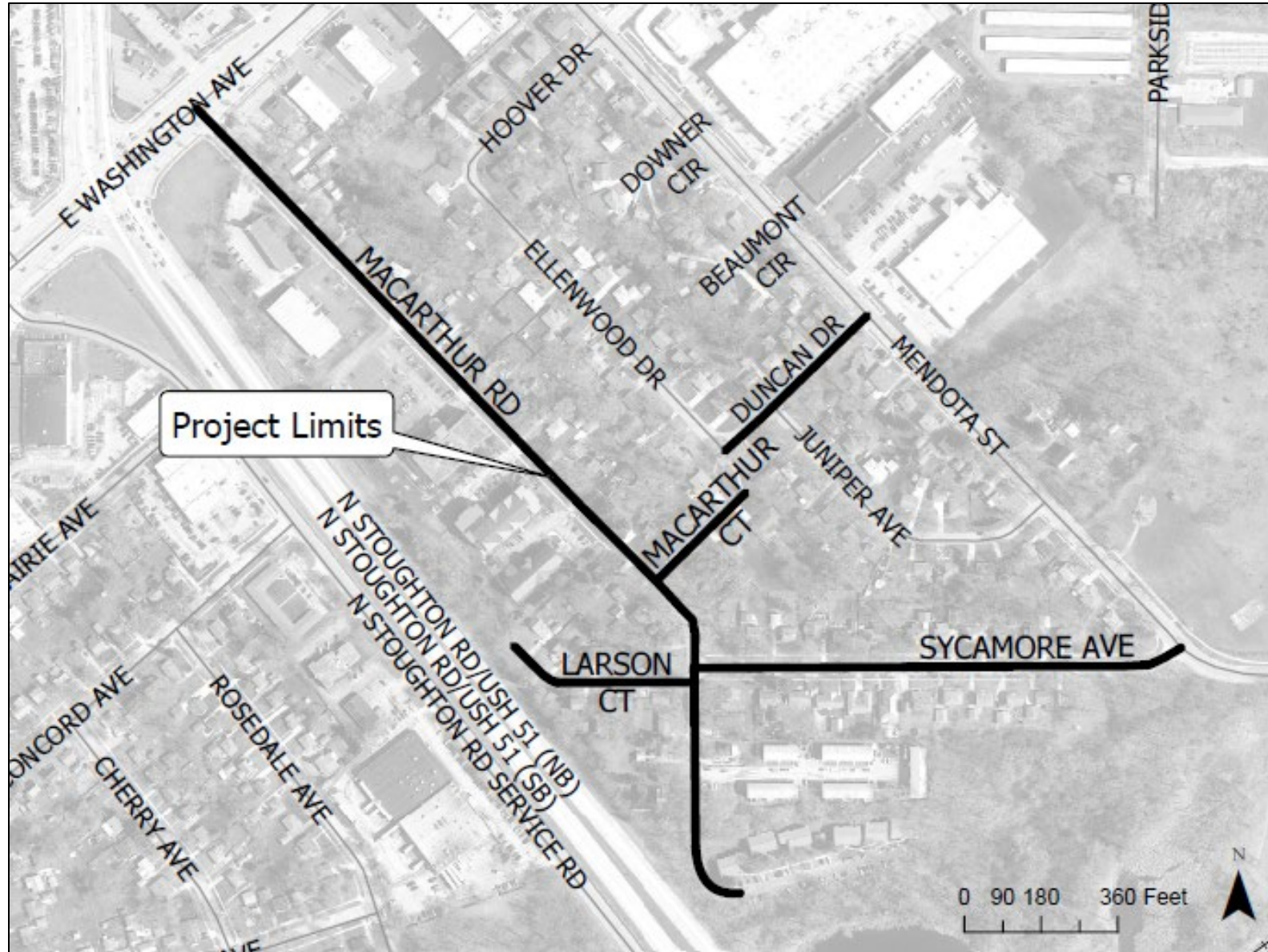
Transportation Commission  
City of Madison Engineering Division  
September 10, 2025



# Presentation Overview

- **Project Location**
- Meeting Purpose
- Speed and Parking Studies
- Proposed Street Design
- Questionnaire Results

# Project Location



CITY OF MADISON



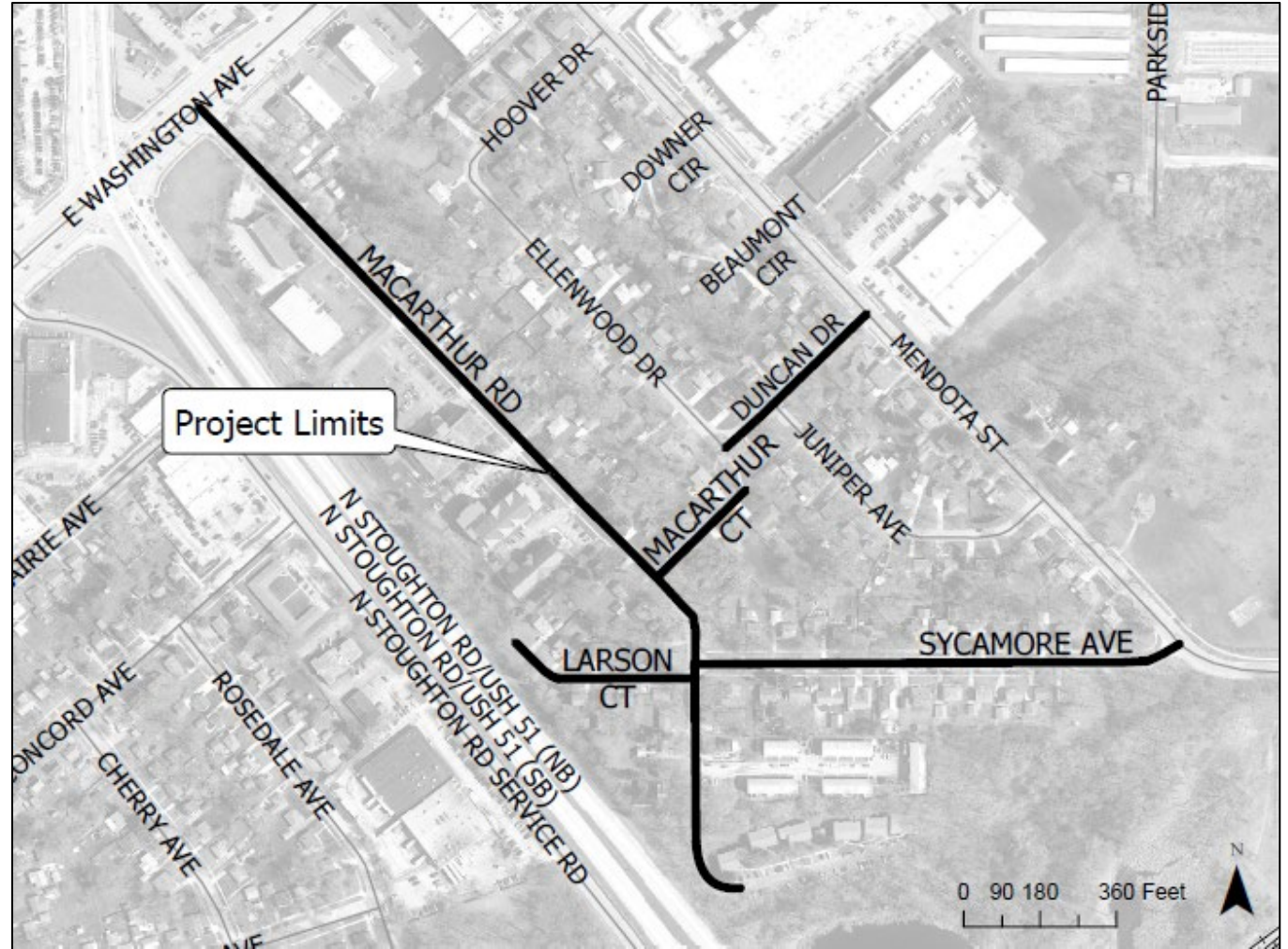
# Presentation Overview

- Project Location
- **Meeting Purpose**
- Speed and Parking Studies
- Proposed Street Design
- Questionnaire Results



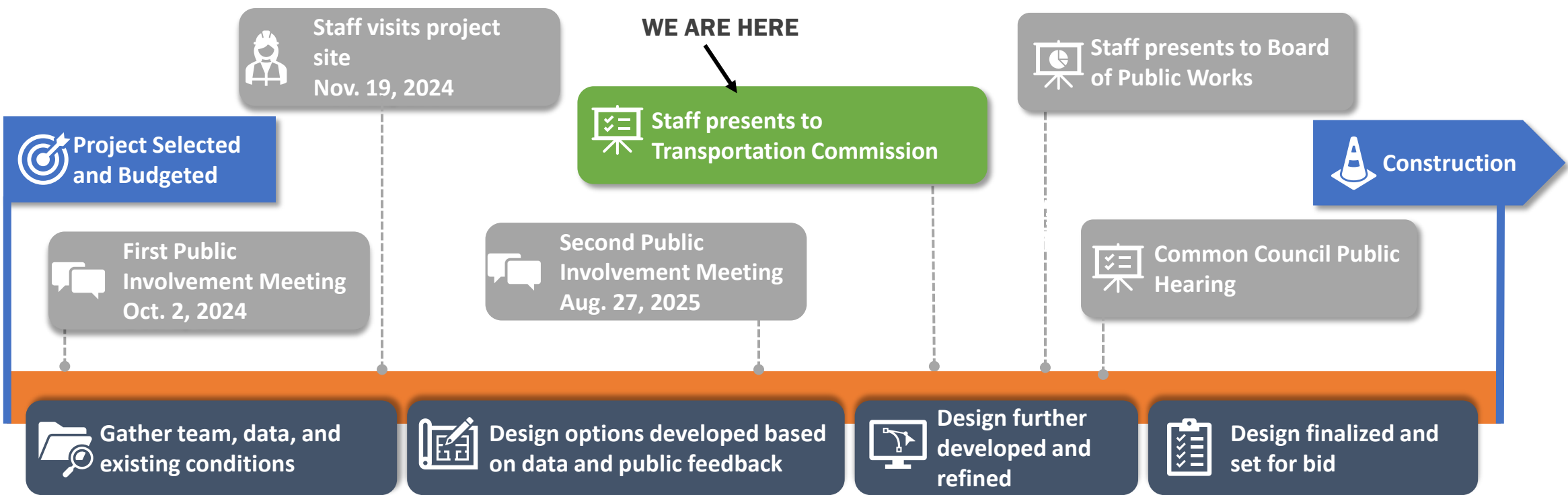
# Meeting Purpose

- To inform the commission regarding the upcoming project and the street layout options
- To inform the commission about public meeting and the questionnaire results
- To gain feedback/approval on the commissions preferred option design



# Meeting Purpose

## Project Development Process

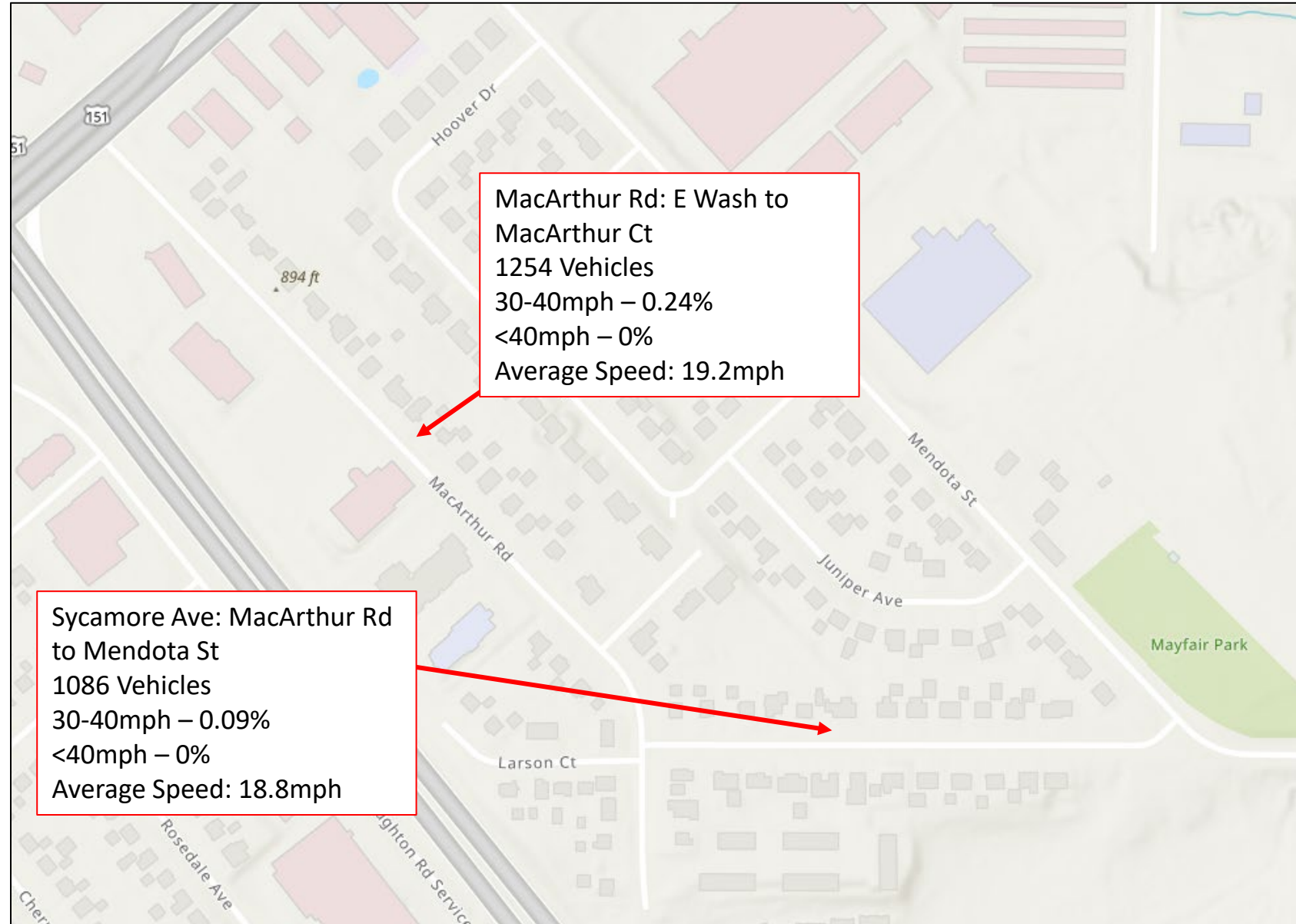


# Presentation Overview

- Project Location
- Meeting Purpose
- **Speed and Parking Studies**
- Proposed Street Design
- Questionnaire Results

# Speed Study

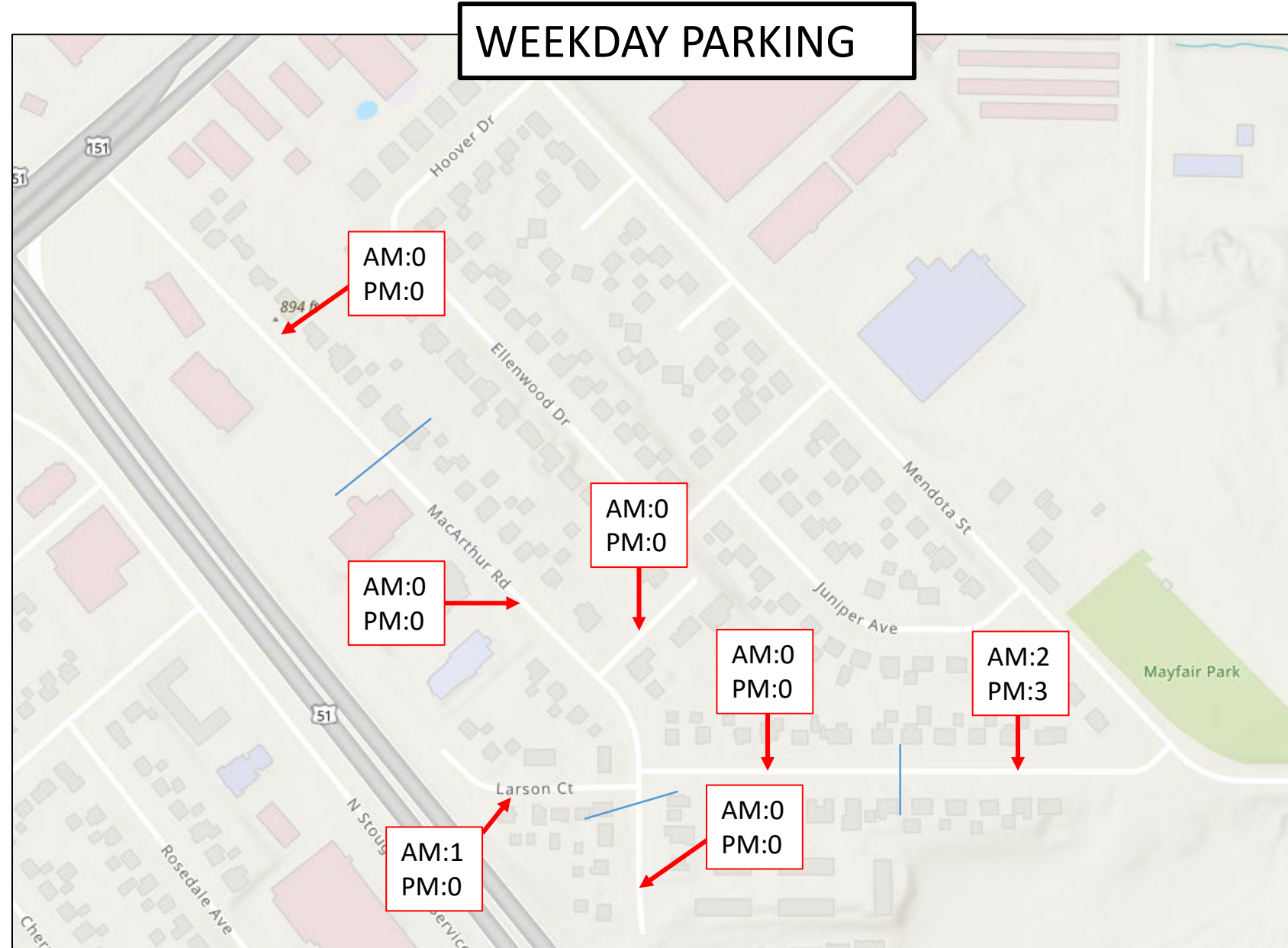
- No Major speeding issues on MacArthur Rd or Sycamore Ave





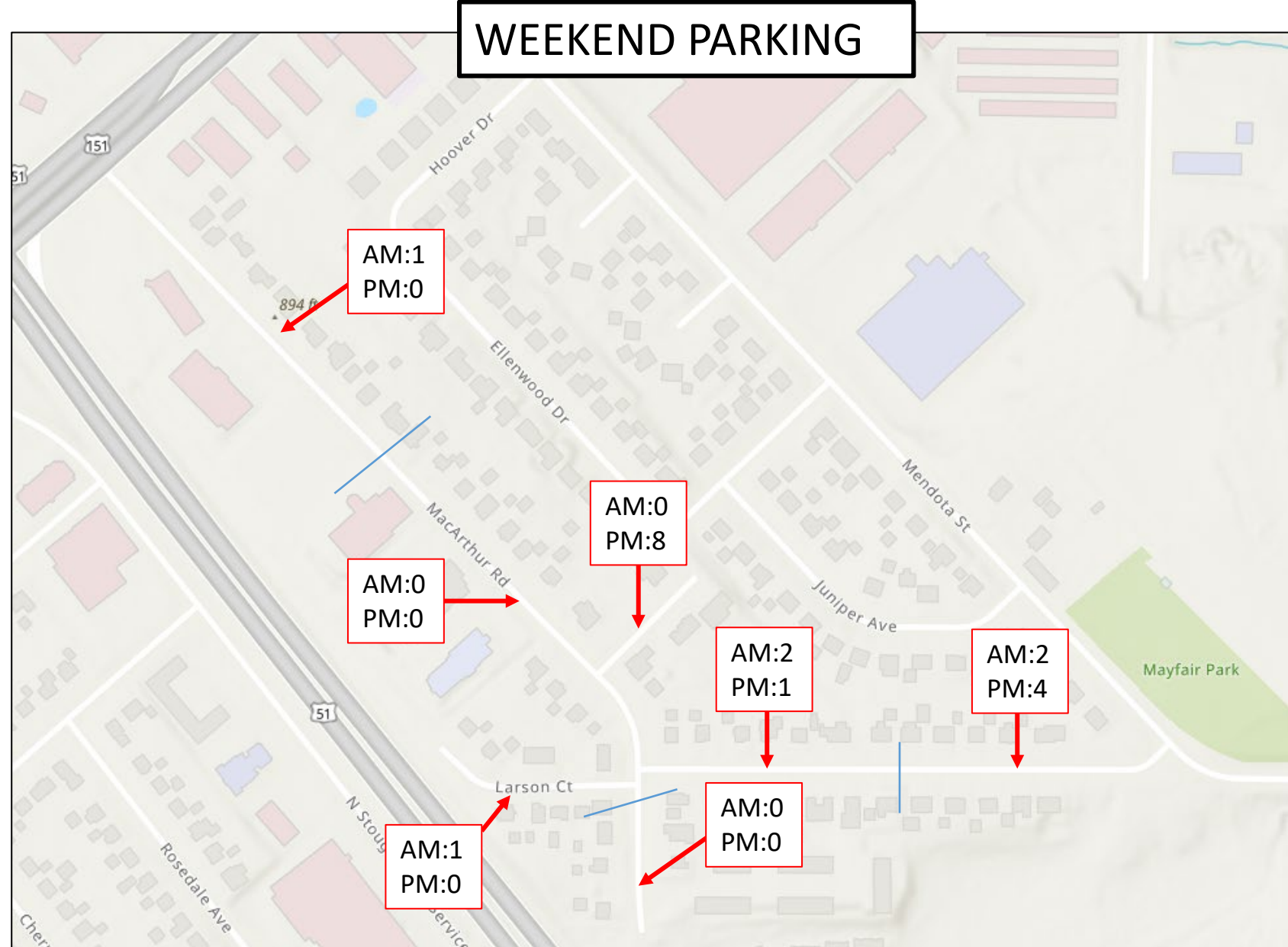
# Parking Study

- Parking Study
  - Between 0 and 3 vehicles parked per block
  - Counts taken during mid morning & mid evening



# Parking Study

- Parking Study
  - Between 0 and 4 vehicles parked per block
  - Counts taken during mid morning & mid evening



# Presentation Overview

- Project Location
- Meeting Purpose
- Speed and Parking Studies
- **Proposed Street Design**
- Questionnaire Results

# Proposed Street Design

- MacArthur Road

- Street width of 22-ft from face of curb to face of curb up to Sycamore Avenue/Larson Court intersection.
  - No parking
- Street width of 24-ft face of curb to face of curb to the south end
  - One side parking
- Replacement of asphalt pavement, gravel base, and driveway aprons
- Street design & construction will include new: curb & gutter and sidewalk
- Installing a cul-de-sac bulb at the south end with a 30-ft radius

- MacArthur Court

- Street width of 20-ft from face of curb to face of curb
- Replacement of asphalt pavement, gravel base, and driveway aprons
- Street design & construction will include new: curb & gutter and sidewalk
- Replacement of sidewalk connection to Duncan Drive
- Installing a cul-de-sac bulb at the east end with a 10-ft radius

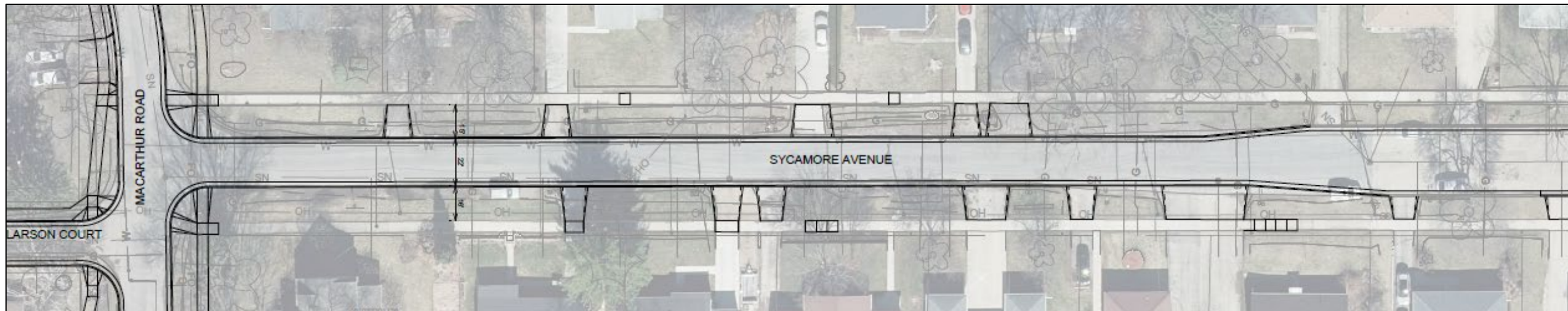
# Proposed Street Design

- Larson Court
  - Street width of 20-ft from face of curb to face of curb
  - Replacement of asphalt pavement, gravel base, and driveway aprons
  - Street design & construction will include new: curb & gutter and sidewalk on one side
  - Installing a cul-de-sac bulb at the west end with a 10-ft radius
- Sycamore Avenue
  - Segment without curb & gutter
    - Replacement of asphalt pavement, gravel base, and driveway aprons
    - Street design & construction will include new: curb & gutter and spot replacement for sidewalk
  - Segment with curb & gutter
    - Replacement of asphalt pavement, gravel base
    - Spot replacements for sidewalk and driveway aprons as necessary



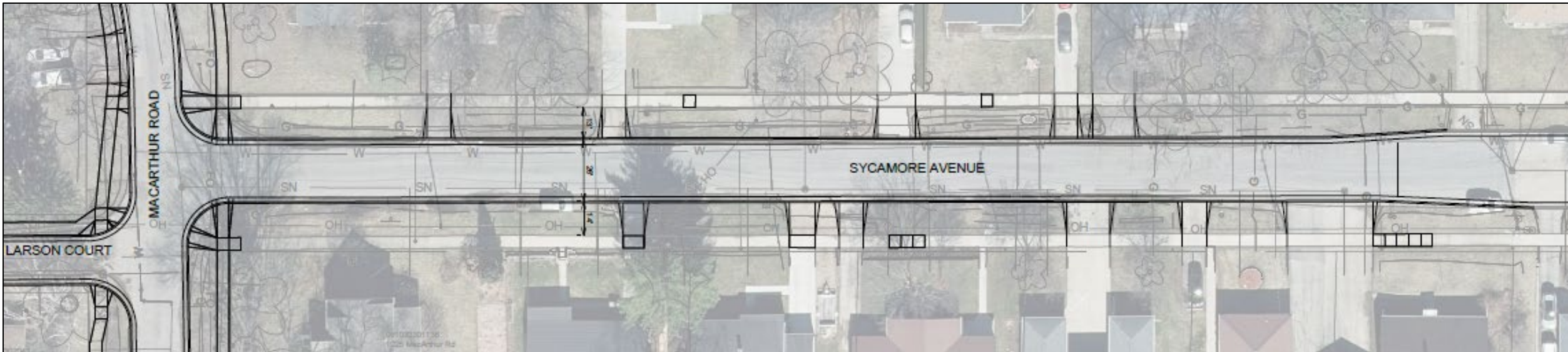
# Proposed Street Design Options

- Option A – Sycamore Avenue
  - Street width of 22-ft from face of curb to face of curb
    - Taper to existing curb & gutter
  - Replace driveway aprons
  - Spot replacement for sidewalk
  - Maintain trees in the right of way
  - Narrow street for lowering vehicle speeds
- Provides and additional 15'-16' space for terraces on each side
- Existing restricted parking would be removed



# Proposed Street Design Options

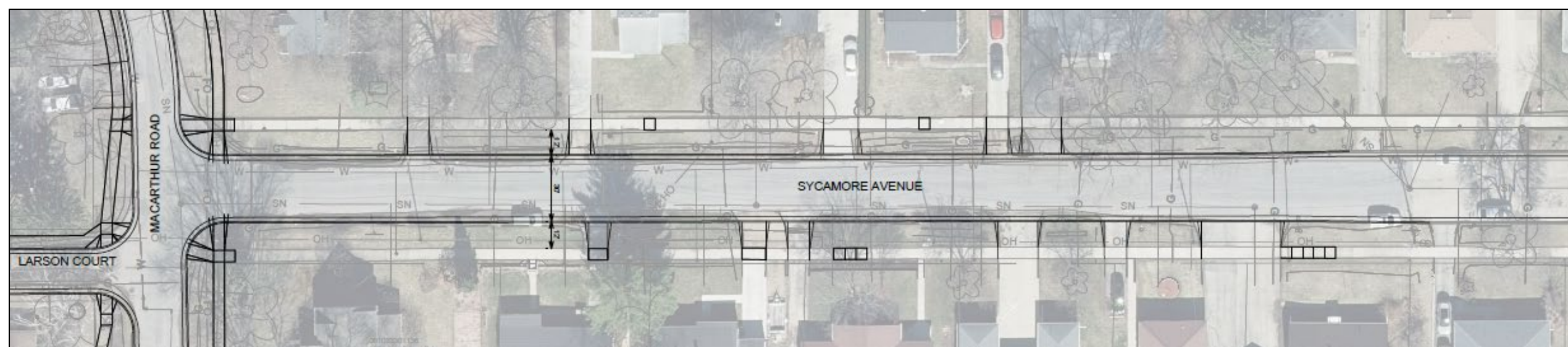
- Option B – Sycamore Avenue
  - Street width of 26-ft from face of curb to face of curb
    - Taper to existing curb & gutter
  - Replace driveway aprons
  - Spot replacement for sidewalk
  - Maintain trees in the right of way
  - Narrow street for lowering vehicles speeds
- Provides an additional 13'-14' space for terraces on each side
- Existing restricted parking would be modified to on-street parking allowed on one side of the street only – maintain existing no overnight parking restriction
- City staff recommendation





# Proposed Street Design Options

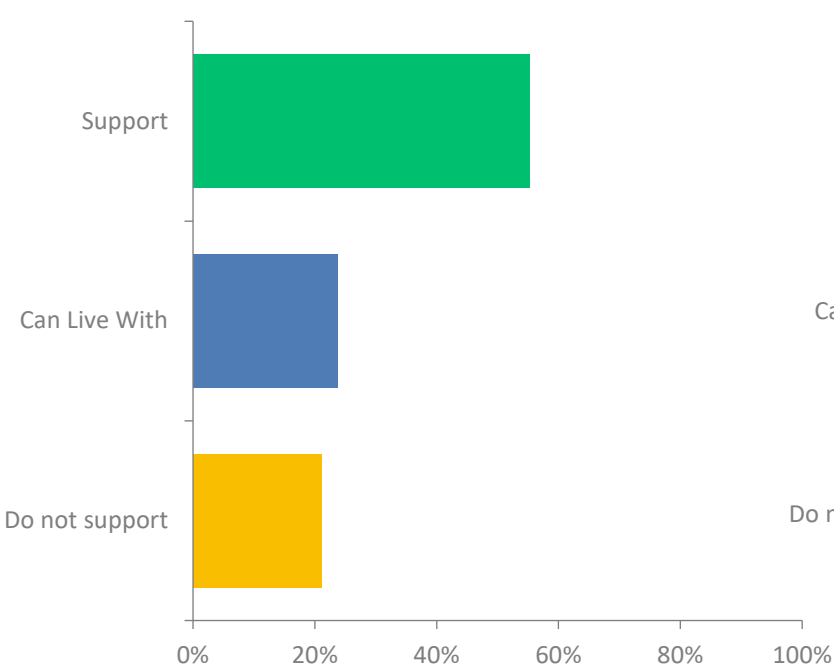
- Option C – Sycamore Avenue
  - Street width of 30-ft from face of curb to face of curb
  - Replace driveway aprons
  - Spot replacement for sidewalk
  - Maintain trees in the right of way
- Provides an additional 11'-12' space for terraces on each side
- Existing restricted parking would be modified to on-street parking allowed on both sides of the street – maintain existing no overnight parking restriction
  - Traffic calming



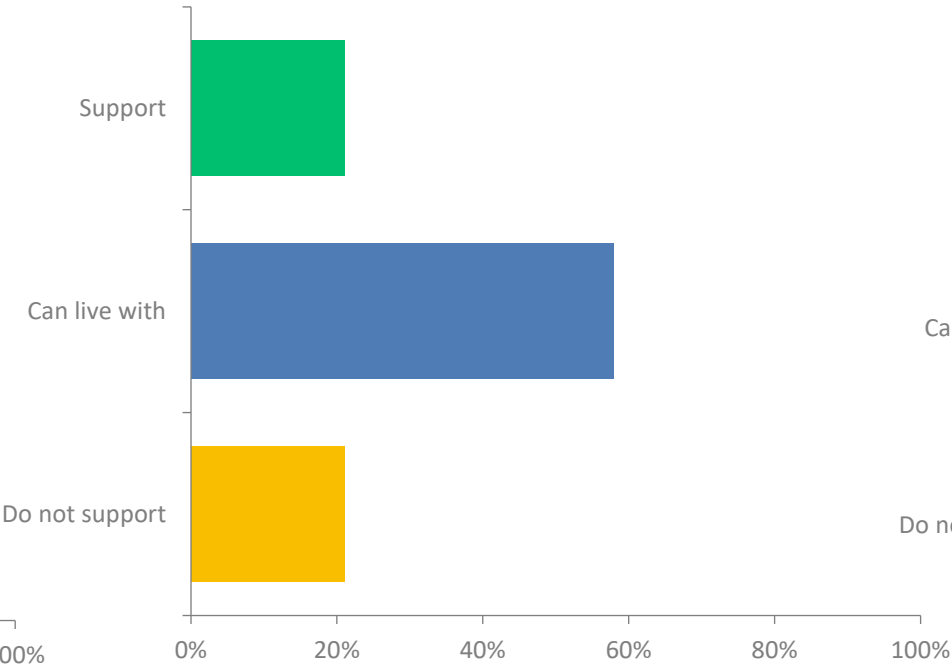
# Presentation Overview

- Project Location
- Meeting Purpose
- Speed and Parking Studies
- Proposed Street Design
- **Questionnaire Results**

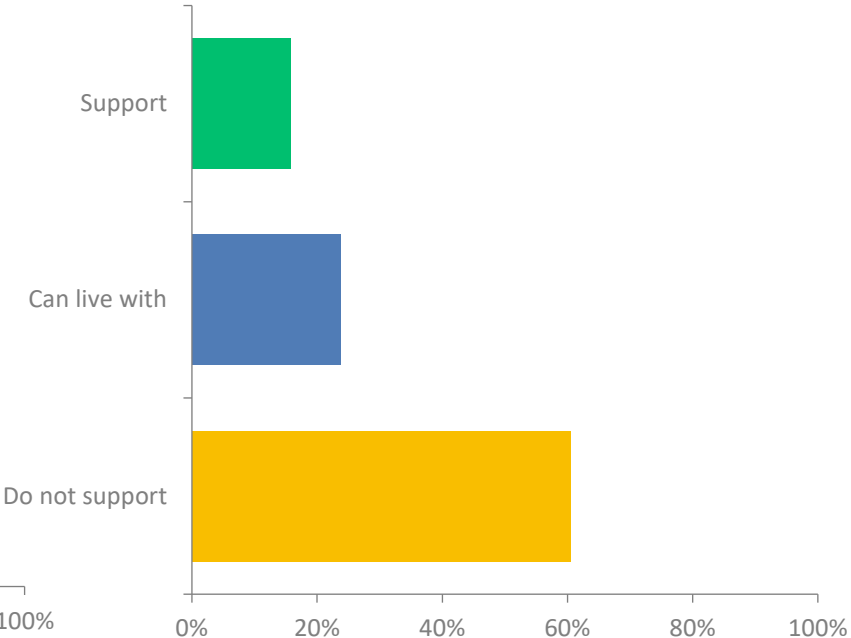
# Questionnaire Results



Sycamore Ave - design options results  
Option A  
Sycamore Ave (22-ft)  
39 votes



Sycamore Ave - design options results  
Option B  
Sycamore Ave (26-ft)  
37 votes

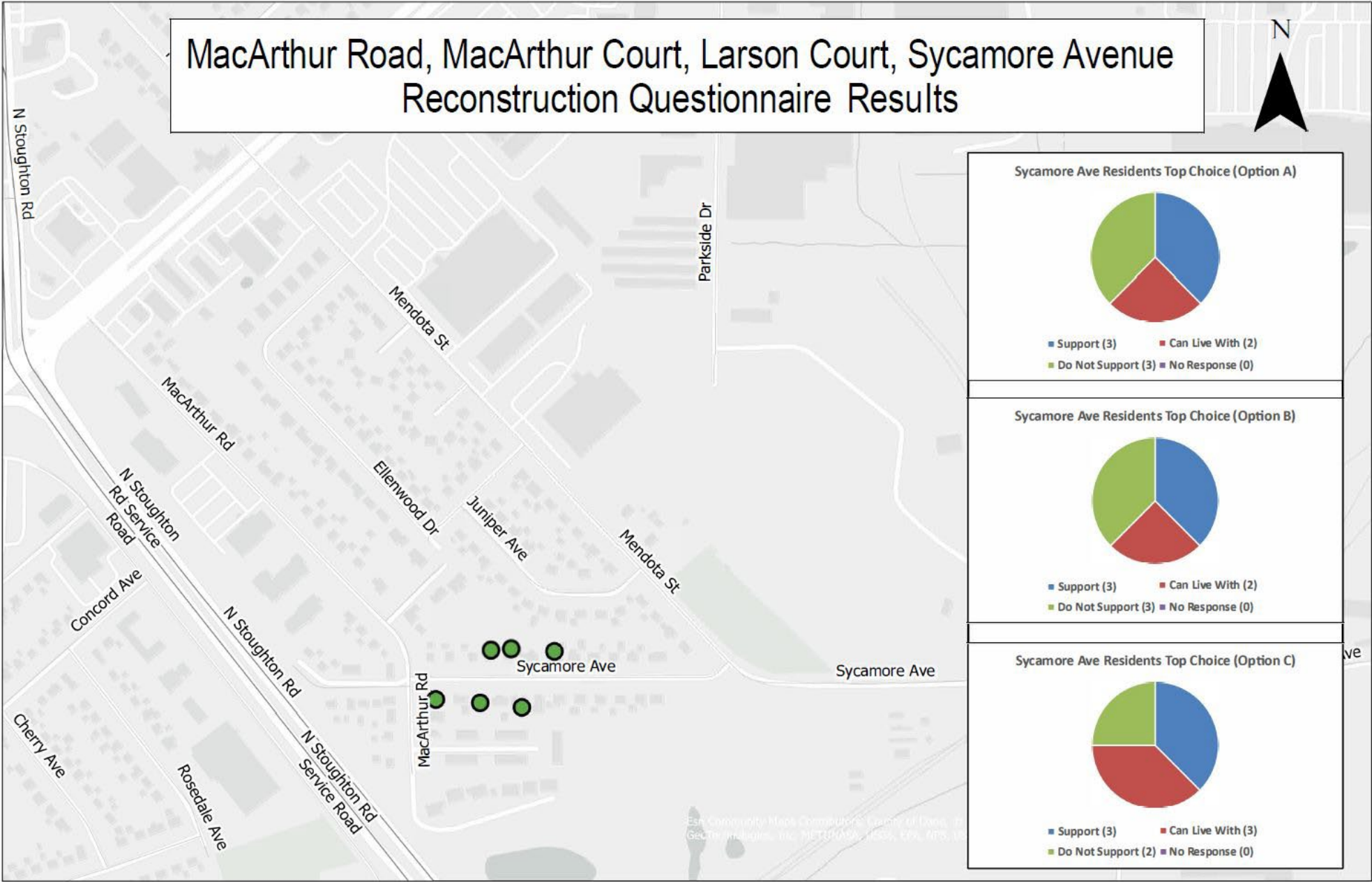


Sycamore Ave - design options results  
Option C  
Sycamore Ave (30-ft)  
37 votes



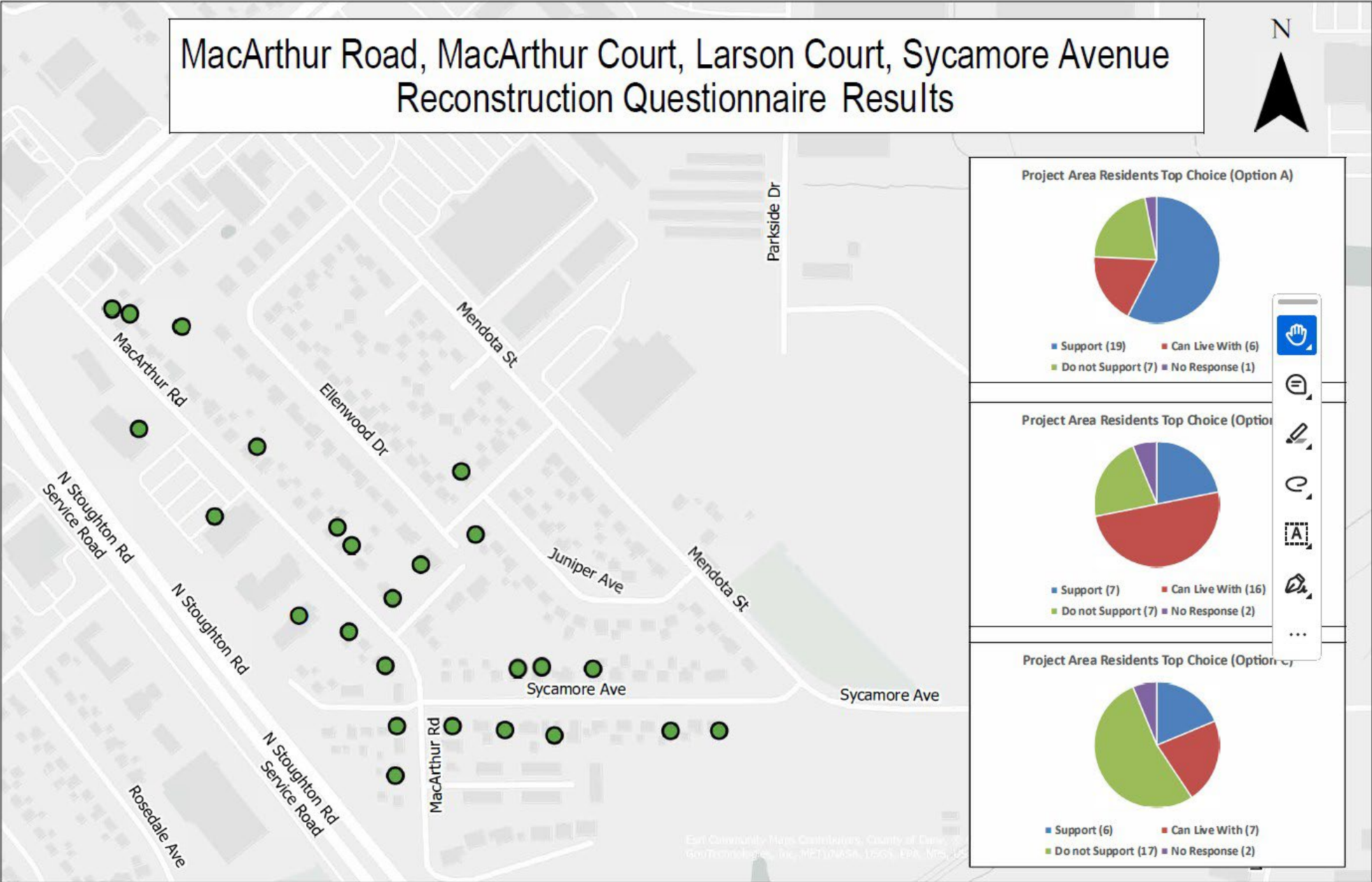
# Questionnaire Results

- Sycamore Ave Residents - design options results



# Questionnaire Results

- Project Area Residents - design options results





# Questionnaire Results

- Overall Residents - design options results

