



Site Plan - Previous
Cardinal Prairie
2014-01-08



Lamp Included!



QH Series
Center Direct Mount

Quadrate Round Tube Post Top

Two optical systems are available:

Vertical Lamp, for 50- to 175-watt medium-base lamps.

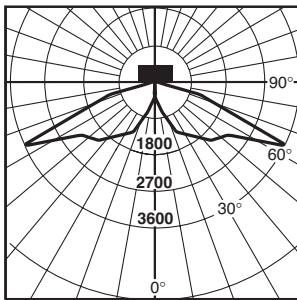
Horizontal Lamp, for 175- to 400-watt mogul-base lamps.

Both provide quadrate distribution and great uniformities. The optical chamber is sealed to reduce dirt and insect contamination.

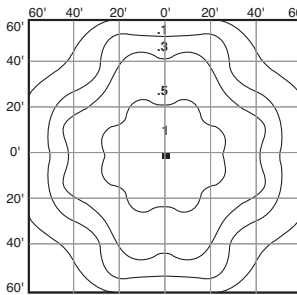
One Size:

16" square x 6.5" deep (406 x 165 mm)

Vertical Lamp Optics

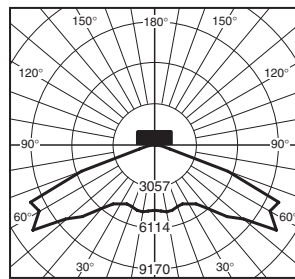


Candlepower Distribution Curve of 16" square 175W MH Vertical Lamp Post Top Light.

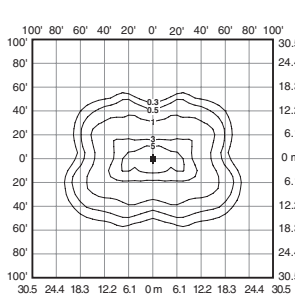


Isofootcandle plot of 16" square 175W MH Vertical Lamp Post Top Light at 20' (6.1 m) mounting height.

Horizontal Lamp Optics



Candlepower Distribution Curve of 16" square 400W MH Horizontal Lamp Post Top Light.



Isofootcandle plot of 16" square 400W MH Horizontal Lamp Post Top Light at 25' (7.6 m) mounting height.

Order Information

Housing Size (sq.)	Wattage/ Lamp	Catalog Number	Mounting Code (Insert Code at * in Catalog #)
Vertical Lamp Optics:			
16"	150W PSMH	QV*615-M	F = Center Tenon Mount (Tenon Fitter for 2-3/8" up to 3" O.D.)
16"	50W MH	QV*405-M	H = Center Direct Mount (Direct Fitter for 4" sq. pole)
16"	70W MH	QV*407-M	Also available with side pole mount:
16"	100W MH	QV*410-M	1 = 1-1/2" Close Pole Mount
16"	175W MH	QV*417-M	2 = 6" Extended Pole Mount
16"	50W HPS	QV*505-D	
16"	70W HPS	QV*507-M	
16"	100W HPS	QV*510-M	

Housing Size (sq.)	Wattage/ Lamp	Catalog Number	Mounting Code (Insert Code at * in Catalog #)
Horizontal Lamp Optics:			
16"	150W PSMH	QH*615-M	F = Center Tenon Mount (Tenon Fitter for 2-3/8" up to 3" O.D.)
16"	250W PSMH	QH*625-M	H = Center Direct Mount (Direct Fitter for 4" sq. pole)
16"	320W PSMH	QH*632-M	
16"	400W PSMH	QH*640-M	
16"	175W MH	QH*417-M	
16"	250W MH	QH*425-M	
16"	400W MH	QH*440-M	
16"	250W HPS	QH*525-M	
16"	400W HPS	QH*540-M	

◀ Some states prohibit these products from being sold.

* Specify Mounting (additional cost)

Other lamp wattages available—consult factory

⚡ Reduced envelope lamp. ED28 for 320 & 400W PSMH.

Options: (Factory-installed)	Change Suffix To	Add After Suffix
277V Reactor ballast (PSMH only)	27	
347V ballast (50W HPS only)	6	
480V ballast (PSMH, 175-400W MH & 70-400W HPS only)	5	
480V ballast (70 & 100W MH only)	5	
Tri-volt ballast (PSMH, MH & 70-400W HPS only)	T	
Single Fuse (277V Reactor, 120V, 277V or 347V)	27, 1, 2 or 6	F
Dual Fuse (208V, 240V or 480V) (n/a Canada)	3, 4 or 5	F
Quartz Standby (delay-relay type) (includes 100W Q lamp) (n/a 277V Reactor)		Q
Button Photocell (n/a on 480V)	27, 1, 2, 3, 4 or 6	P
External Photocell (480V only) (Page 131)	5	P

Accessory: (Field-installed)

Description	Catalog Number
Wire Guard	FWG-16
Mountings	Page 114
Catalog Number Logic/Voltage Suffix Key	Page 113
Optical Systems	Pages 102-105
Accessories	Page 131
Mounting Alternatives	Pages 148-149
Mounting Brackets	Pages 150-151
Poles	Pages 152-159

Lamp Included!



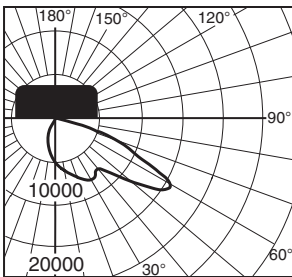
**AC Series
6" Extended Pole Mount**

Area Cutoff

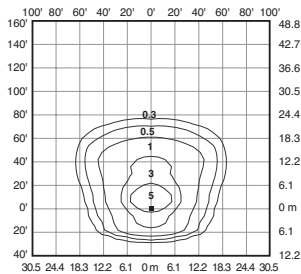
This compact forward-throw reflector has a main beam of 60+ degrees from vertical (30 degrees from horizontal), providing wide lateral distribution and excellent uniformities. A Backlight Shield accessory (standard on Wall Mount) permits precise cutoff adjustability.

Three Sizes:

- 12" square x 5" deep (305 x 127 mm)
- 16" square x 6.5" deep (406 x 165 mm)
- 22" square x 9.3" deep (559 x 235 mm)



Candlepower distribution curve of 400W MH 16" Area Cutoff Light. (Side View)



Isofootcandle plot of 400W MH Area Cutoff Light at 30' (9.1 m) mounting height, 0° tilt above horizontal, with backlight shield removed.

Order Information

Housing Size (sq.)	Wattage/ Lamp	Catalog Number	Mounting Code	(Insert Code at * in Catalog #)
12"	150W PSMH	MAC*615-M	1	1-1/2" Close Pole Mount
16"	150W PSMH	AC*615-M	2	6" Extended Pole Mount
16"	250W PSMH	AC*625-M	3	2" Adjustable Fitter
16"	320W PSMH	AC*632-M	4	Yoke Mount
16"	400W PSMH	AC*640-M	6	1/2" Adjustable Fitter (12" housing only)
22"	750W PSMH	AC*675-M	8	Without Mounting (hardware)
12"	50W MH	MAC*405-M	K	Round Tube Off-Center Tenon Mount (16" housing only) (For 2-3/8" or 3" O.D.)
12"	70W MH	MAC*407-M	M	Round Tube Off-Center Direct Mount (16" housing only) (Direct Fitter for 4" sq. pole)
12"	100W MH	MAC*410-M	W	Wall Mount (Backlight Shield is standard)
12"	175W MH	MAC*417-M		
16"	175W MH	AC*417-M		
16"	250W MH	AC*425-M		
16"	400W MH	AC*440-M		
22"	1000W MH	AC*499-M		
12"	35W HPS	MAC*503-1		
12"	50W HPS	MAC*505-D		
12"	70W HPS	MAC*507-M		
12"	100W HPS	MAC*510-M		
12"	150W HPS	MAC*515-M		
16"	250W HPS	AC*525-M		
16"	400W HPS	AC*540-M		

NOTE: When using multiple 22" sq. housings at 90° configuration, a special 12" arm is required; see page 148.

◀ Some states prohibit these products from being sold.

* Specify Mounting (additional cost)

Other lamp wattages available—consult factory

◉ Reduced envelope lamp. ED28 for 320 & 400W PSMH and 400W MH; BT37 for 1000W MH.

Options: (Factory-installed)	Change Suffix To	Add After Suffix
120V Reactor ballast (50–150W HPS 12" housing only)	1	
277V Reactor ballast (PSMH only)	27	
347V ballast (50W HPS only)	6	
480V ballast (PSMH, 175–1000W MH & 70–400W HPS only)	5	
480V ballast (70–100W MH only)	5	
Tri-volt ballast (PSMH, MH & 70–400W HPS only)	T	
Single Fuse (277V Reactor, 120V, 277V or 347V)	27, 1, 2 or 6	F
Dual Fuse (208V, 240V or 480V) (n/a Canada)	3, 4 or 5	F
Quartz Standby (delay-relay type) (includes 100W Q lamp) (n/a 277V Reactor)	Q	
Button Photocell (Factory-installed with all mountings other than 2" Adjustable Fitter)		
NOTE: n/a on 1000W w/120V; all 480V	27, 1, 2, 3, 4 or 6	P
External Photocell (Factory-installed) (Page 131)		
For fixtures w/1000W, 120V	1	P
For fixtures w/480V	5	P

Accessories:

(Field-installed)	12"	16"	22"
Wire Guard	FWG-12	FWG-16	FWG-22
Backlight Shield	SBL-12	SBL-16	SBL-22

(standard on AC Series Wall Mount)

Button Photocell (Field-installed in fixtures with 2" Adjustable Fitter)	Catalog #
For fixtures w/120V (n/a on 1000W)	PC-1
For fixtures w/208, 240 or 277V	PC-2
For fixtures w/347V	PC*6

Mountings Page 114

Catalog Number Logic/Voltage Suffix Key Page 113

Optical Systems Pages 102–105

Accessories Page 131

Mounting Alternatives Pages 148–149

Mounting Brackets Pages 150–151

Poles Pages 152–159

Performance... DIRECT!

(800) 236-7000, 7 a.m. to 6 p.m. CT

Fax: (800) 236-7500 • www.ruudlighting.com

Area

Cutoff

AC SERIES

Lamp Included!



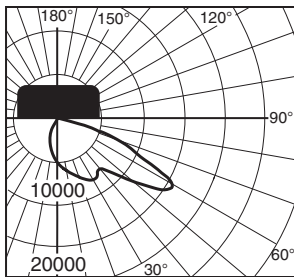
**AC Series
6" Extended Pole Mount**

Area Cutoff

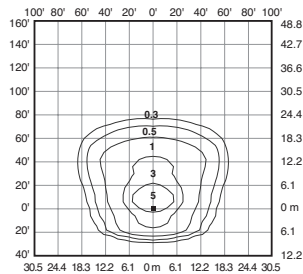
This compact forward-throw reflector has a main beam of 60+ degrees from vertical (30 degrees from horizontal), providing wide lateral distribution and excellent uniformities. A Backlight Shield accessory (standard on Wall Mount) permits precise cutoff adjustability.

Three Sizes:

- 12" square x 5" deep (305 x 127 mm)
- 16" square x 6.5" deep (406 x 165 mm)
- 22" square x 9.3" deep (559 x 235 mm)



Candlepower distribution curve of 400W MH 16" Area Cutoff Light. (Side View)



Isofootcandle plot of 400W MH Area Cutoff Light at 30' (9.1 m) mounting height, 0° tilt above horizontal, with backlight shield removed.

Order Information

Housing Size (sq.)	Wattage/ Lamp	Catalog Number	Mounting Code (Insert Code at * in Catalog #)
12"	150W PSMH	MAC*615-M	1 = 1-1/2" Close Pole Mount
16"	150W PSMH	AC*615-M	2 = 6" Extended Pole Mount
16"	250W PSMH	AC*625-M	3 = 2" Adjustable Fitter
16"	320W PSMH	AC*632-M	4 = Yoke Mount
16"	400W PSMH	AC*640-M	6 = 1/2" Adjustable Fitter (12" housing only)
22"	750W PSMH	AC*675-M	8 = Without Mounting (hardware)
12"	50W MH	MAC*405-M	K = Round Tube Off-Center Tenon Mount (16" housing only) (For 2-3/8" or 3" O.D.)
12"	70W MH	MAC*407-M	M = Round Tube Off-Center Direct Mount (16" housing only) (Direct Fitter for 4" sq. pole)
12"	100W MH	MAC*410-M	W = Wall Mount (Backlight Shield is standard)
12"	175W MH	MAC*417-M	
16"	175W MH	AC*417-M	
16"	250W MH	AC*425-M	
16"	400W MH	AC*440-M	
22"	1000W MH	AC*499-M	
12"	35W HPS	MAC*503-1	
12"	50W HPS	MAC*505-D	
12"	70W HPS	MAC*507-M	
12"	100W HPS	MAC*510-M	
12"	150W HPS	MAC*515-M	
16"	250W HPS	AC*525-M	
16"	400W HPS	AC*540-M	

NOTE: When using multiple 22" sq. housings at 90° configuration, a special 12" arm is required; see page 148.

◀ Some states prohibit these products from being sold.

* Specify Mounting (additional cost)

Other lamp wattages available—consult factory

◉ Reduced envelope lamp. ED28 for 320 & 400W PSMH and 400W MH; BT37 for 1000W MH.

Options: (Factory-installed)	Change Suffix To	Add After Suffix
120V Reactor ballast (50–150W HPS 12" housing only)	1	
277V Reactor ballast (PSMH only)	27	
347V ballast (50W HPS only)	6	
480V ballast (PSMH, 175–1000W MH & 70–400W HPS only)	5	
480V ballast (70–100W MH only)	5	
Tri-volt ballast (PSMH, MH & 70–400W HPS only)	T	
Single Fuse (277V Reactor, 120V, 277V or 347V)	27, 1, 2 or 6	F
Dual Fuse (208V, 240V or 480V) (n/a Canada)	3, 4 or 5	F
Quartz Standby (delay-relay type) (includes 100W Q lamp) (n/a 277V Reactor)	Q	
Button Photocell (Factory-installed with all mountings other than 2" Adjustable Fitter)		
NOTE: n/a on 1000W w/120V; all 480V	27, 1, 2, 3, 4 or 6	P
External Photocell (Factory-installed) (Page 131)		
For fixtures w/1000W, 120V	1	P
For fixtures w/480V	5	P

Accessories:

(Field-installed)	12"	16"	22"
Wire Guard	FWG-12	FWG-16	FWG-22
Backlight Shield	SBL-12	SBL-16	SBL-22

(standard on AC Series Wall Mount)

Button Photocell (Field-installed in fixtures with 2" Adjustable Fitter)	Catalog #
For fixtures w/120V (n/a on 1000W)	PC-1
For fixtures w/208, 240 or 277V	PC-2
For fixtures w/347V	PC*6

Mountings Page 114

Catalog Number Logic/Voltage Suffix Key Page 113

Optical Systems Pages 102–105

Accessories Page 131

Mounting Alternatives Pages 148–149

Mounting Brackets Pages 150–151

Poles Pages 152–159



Lamp Included!

E5 Series
(shown with Gold Shroud option)



E8 Series
(shown with Bronze Shroud option)

Up/Down Cutoff & Deep Shielded

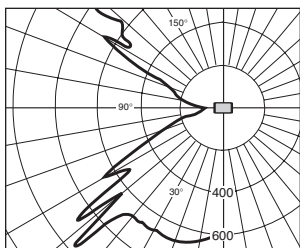
E5 Series Up/Down Cutoff

The optics provide controlled uplight and downlight with side cutoff. The E5 Series optics are also available for vertical mounting; add suffix "R" to catalog number.

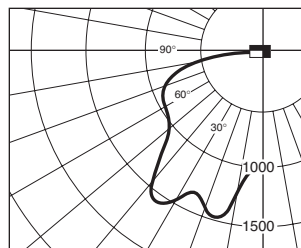
NOTE: 50-watt MH with suffix "G" is supplied with a glass insert to allow operation in the wall-mounted position.

E8 Series Deep Shielded

Front brightness shielding without sacrificing wide light distribution. The E8 works ideally over entrances.



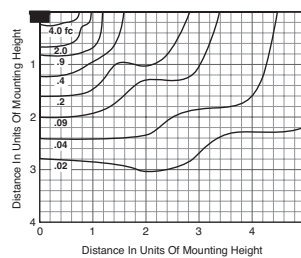
Candlepower Distribution Curve of 50W HPS E5 Up/Down Cutoff Light.



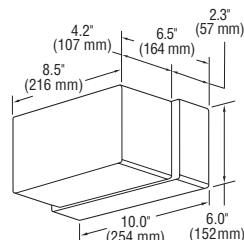
Candlepower Distribution Curve of 70W HPS E8 Deep Shielded Light.



Isofootcandle plot of one 50W HPS E5 Up/Down Cutoff Light at 10' (3.0 m) mounting height (plan view).



Isofootcandle plot of one 70W HPS E8 Deep Shielded Light at 15' (4.6 m) mounting height (plan view).



For 50, 70 and 100W HPS with quad-volt or tri-volt, and all MH fixtures, the housing depth is 3" (76 mm), and the overall fixture depth is 7.2" (183 mm).

Order Information

Description	Wattage/ Lamp Type	Catalog Number	Mounting Position
Up/Down Cutoff	50W MH	E5405-MG	Wall
	35W HPS	E5503-1	Any
	50W HPS	E5505-1	Any
Deep Shielded	50W MH	E8405-M	Wall Downlight only
	70W MH	E8407-M	Wall Downlight only
	35W HPS	E8503-1	Any
	50W HPS	E8505-1	Any
	70W HPS	E8507-1	Wall Downlight only
	100W HPS	E8510-1	Wall Downlight only

NOTE: Suffix "G" indicates glass insert is supplied.

Options: (Factory-installed)	Change Suffix To	Add After Suffix
277V ballast (35-50W HPS only)	2	
347V ballast (50W HPS only)	6	
Quad-volt ballast (70-100W HPS only)	M	
Tri-volt ballast (50 & 70W MH only)	T	
Tri-volt ballast (70 & 100W HPS only)	T	
Photocell (120V, 277V, 208V, 240V or 347V)	1, 2, 3, 4 or 6	P
Bronze Color Shroud		BS
Gold Color Shroud (not available on 100W HPS)		GS
High Power Factor ballast		H
Tamperproof Lens Fasteners		J
Vertical Mounting (E5 Series only)		R
Polycarbonate Lens		V

NOTE: Not available when both hpf and photocell supplied

Accessories: (Field-installed)

Description	Catalog Number
Surface Mounting Box	ESB-7
Pole Mounting Bracket	PAS-7
Tamperproof Screwdriver	TPS-1

Catalog Number Logic/Voltage Suffix Key Page 9
Ballard Panel Page 31
Accessories Page 39

E5 Series Mounting Multipliers

Height	Multiplier
7' (2.1 m)	2.04
8' (2.4 m)	1.56
9' (2.7 m)	1.23
10' (3.0 m)	1.00
12' (3.7 m)	0.69
15' (4.6 m)	0.44
20' (6.1 m)	0.25

E8 Series Mounting Multipliers

Height	Multiplier
8' (2.4 m)	3.52
10' (3.0 m)	2.25
12' (3.7 m)	1.56
15' (4.6 m)	1.00
20' (6.1 m)	0.56
25' (7.6 m)	0.36

The E5 Series photometric data was developed in testing Ruud fixtures with clear, 50W HPS 4,000 lumen medium base lamps. Footcandle readings for other wattages and lamp types may be obtained by multiplying the chart values by the following:

Lamp/Wattages	Multiplier
50W MH	0.85
35W HPS	0.56

The E Series photometric data in this section was developed in testing Ruud fixtures with clear, 70W HPS 6,400 lumen medium base lamps. Footcandle readings for other wattages and lamp types may be obtained by multiplying the chart values by the following:

Lamp/Wattages	Multiplier
50W MH	0.53
70W MH	0.86
35W HPS	0.35
50W HPS	0.63
100W HPS	1.48

Fast Shipping... DIRECT!

(800) 236-7000, 7 a.m. to 6 p.m. CT

Fax: (800) 236-7500 • www.ruudlighting.com

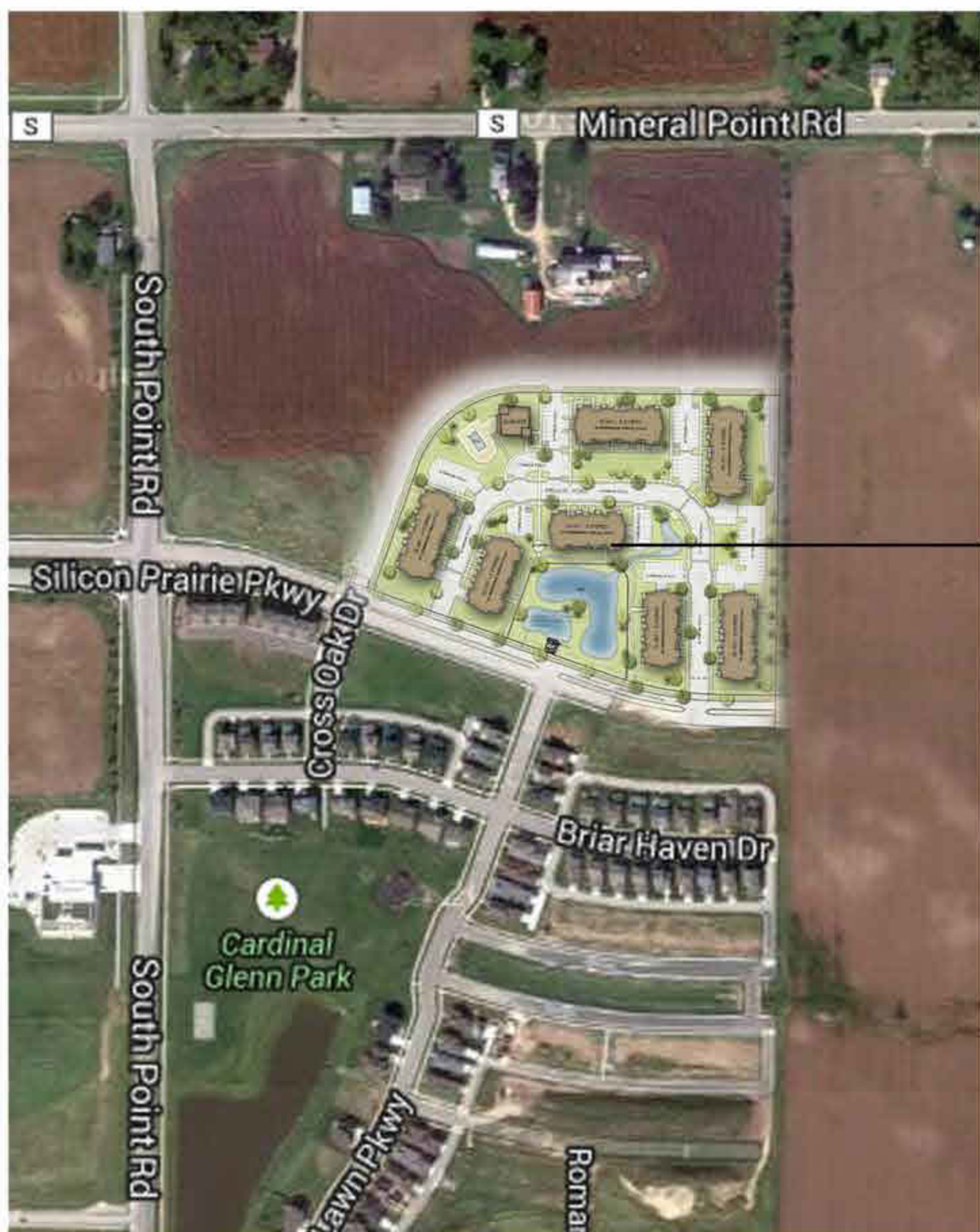
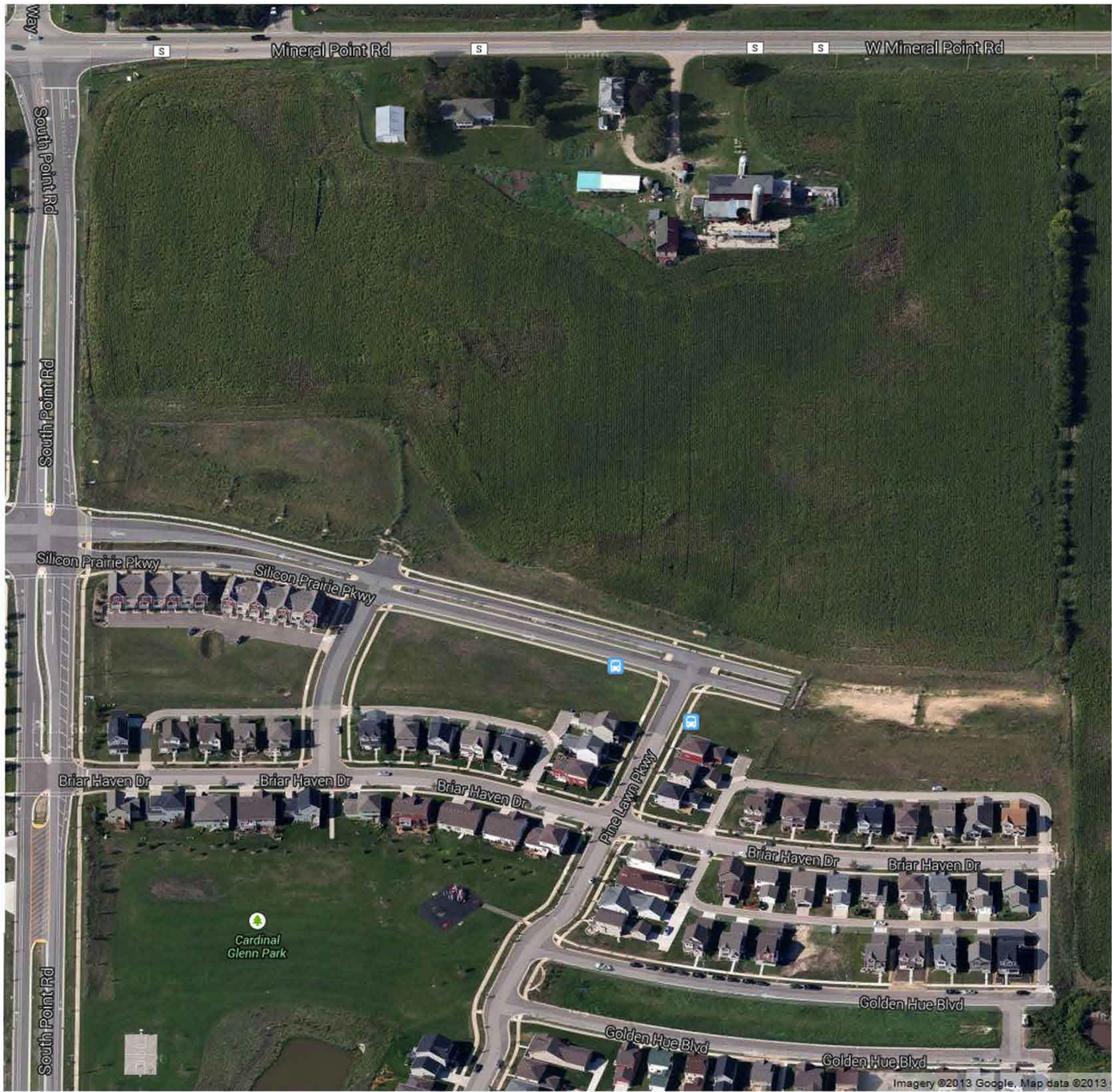


Site Plan-Alternate Option
Cardinal Prairie
2014-01-08





Site Plan
Cardinal Prairie
2014-01-08



SITE



NEIGHBORHOOD

Context

Cardinal Prairie
2014-01-08





Building #5



Building #6



Building #7



Building #8



Elevations
Cardinal Prairie
2014-01-08





Building #1



Building #2



Building #3

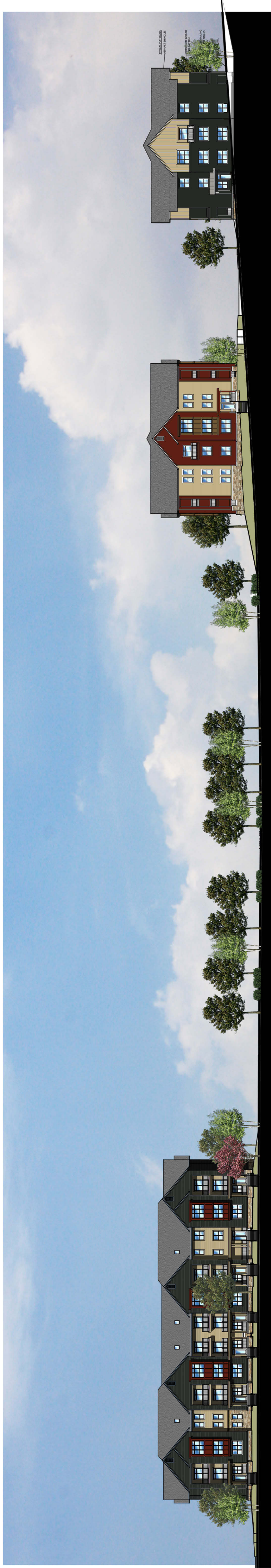


Building #4



Elevations
 Cardinal Prairie
 2014-01-08





Cardinal Prairie
2014-01-08