

CERTIFIED SURVEY MAP NO. _____

PART OF LOT 56 AND ALL OF LOT 57 OF SIXTH ADDITION TO PARK TOWNE, LOCATED IN PART OF THE NW1/4 OF THE NE1/4, SECTION 25, T7N, R8E, CITY OF MADISON, DANE COUNTY, WISCONSIN

N89°29'32"E, 2653.50'=OVERALL SECTION LINE (N89°29'20"E, 2653.06')
2397.60'

NORTH 1/4 CORNER SECTION 25, T7N, R8E, CONCRETE MONUMENT FOUND WITH ALUMINUM CAP IN STATE PLANE COORDINATES, SOUTH ZONE, NAD 27, CITY OF MADISON PUBLISHED COORDS. N 387,031.77 E 2,135,572.18

NORTHEAST CORNER SECTION 25, T7N, R8E, CONCRETE MONUMENT FOUND WITH ALUMINUM CAP

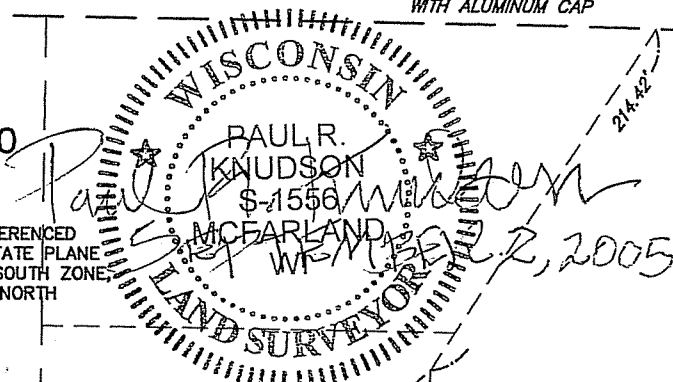
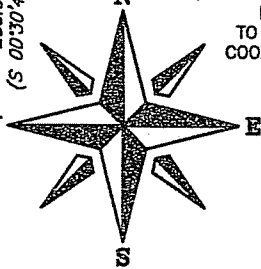
MINERAL POINT ROAD

GRAPHIC SCALE FEET



SCALE: 1"=100'

BEARINGS ARE REFERENCED TO THE WISCONSIN STATE PLANE COORDINATE SYSTEM, SOUTH ZONE, NAD 1927, GRID NORTH



6th ADD. PARK TOWNE

GRAND TETON PLAZA

6th ADD. PARK TOWNE

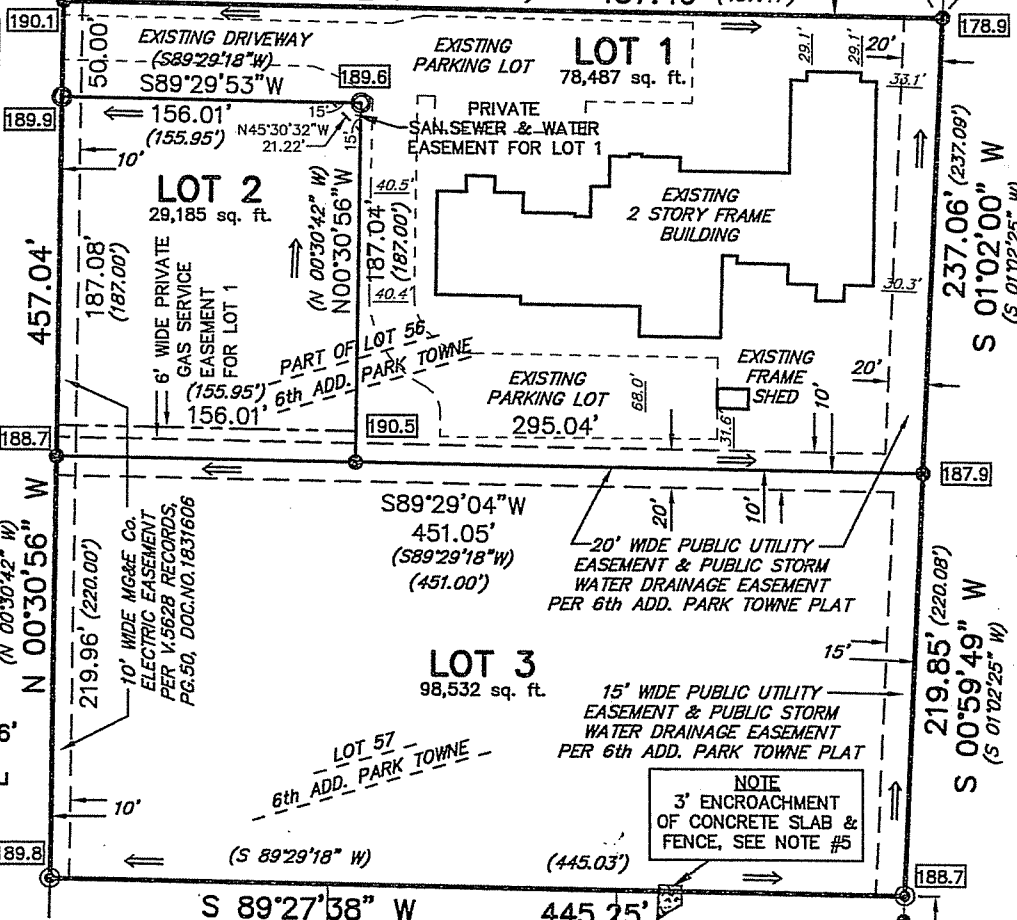
123

SURVEYED FOR:
ATTN: JIM RING
PARK TOWNE DEVELOPMENT
402 GAMMON PLACE, #300
MADISON, WI 53719

LOT 1
C.S.M. No. 3468

LOT 2
C.S.M. No. 5211

PART OF LOT 56
6th ADD. PARK TOWNE
N 89°29'53" E (N 89°29'18" E) 457.46' (457.41')



LEGEND

- SET 3/4" X 24" SOLID IRON REBAR, 1.50 LBS./LINEAL FOOT
- ⊙ FOUND 1 1/4" REBAR

DOCUMENT NO _____

* NOTE *
SEE NOTES ON SHEET 4 OF 4.