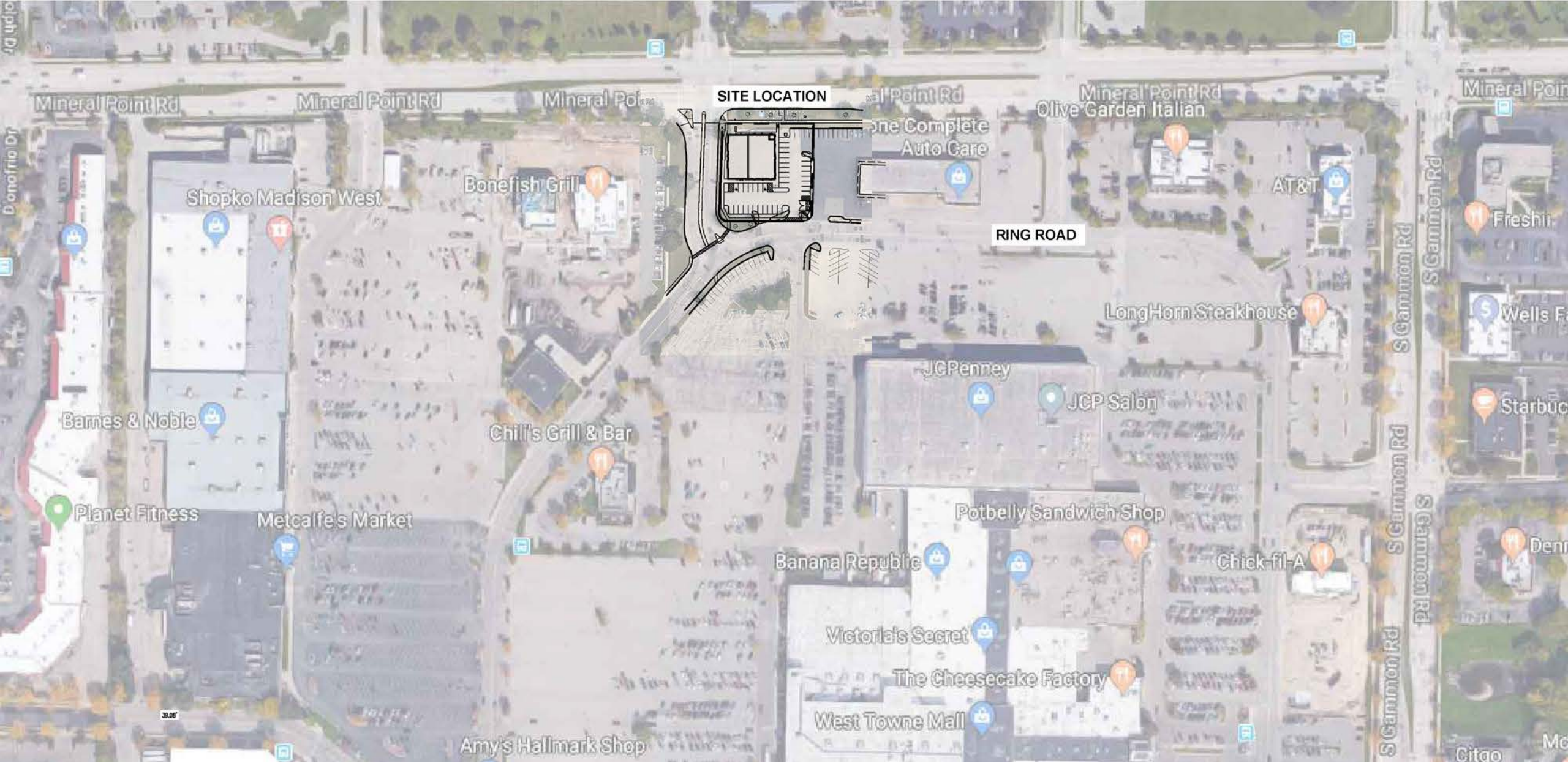
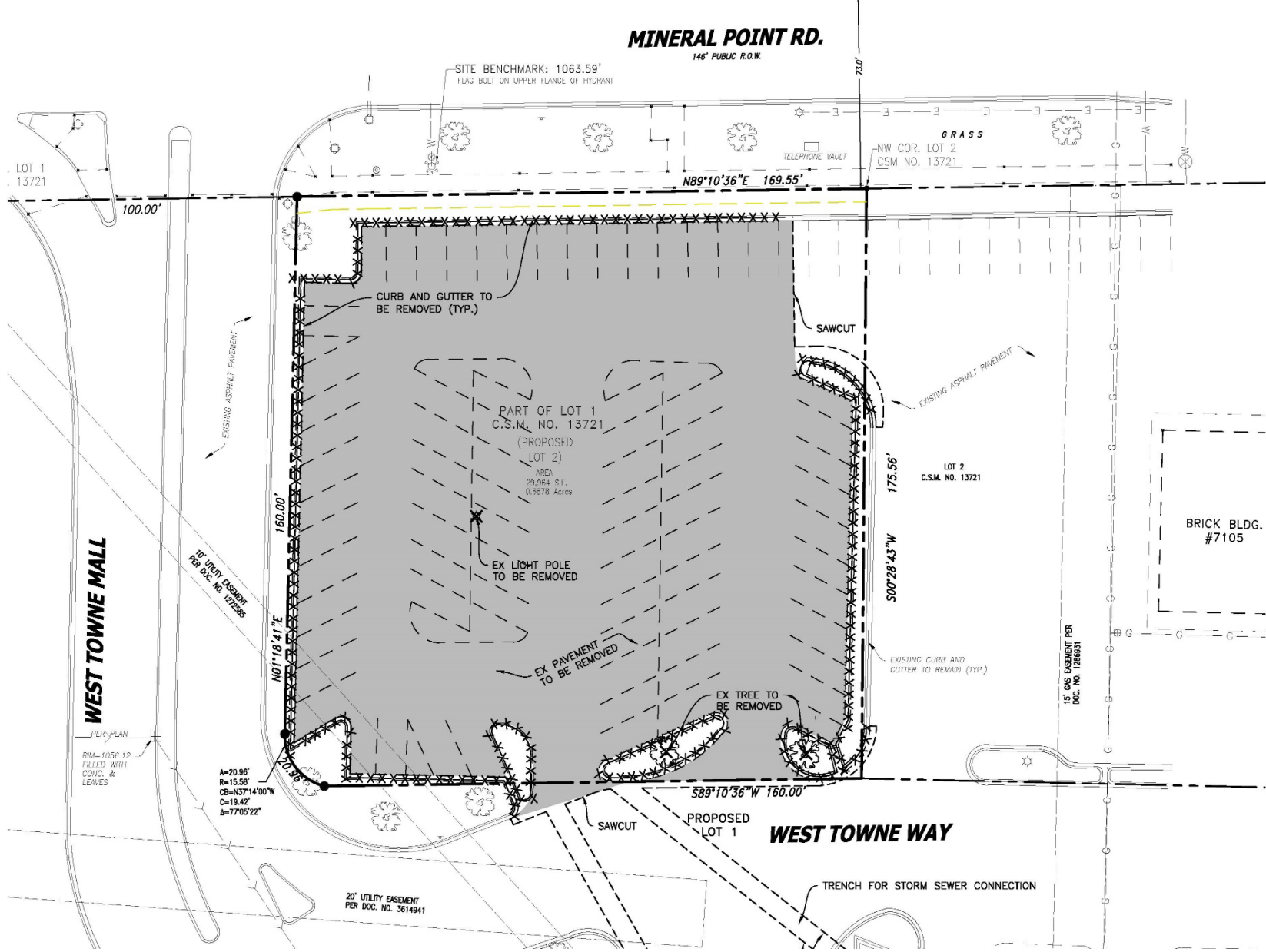




7213 Mineral Point Road



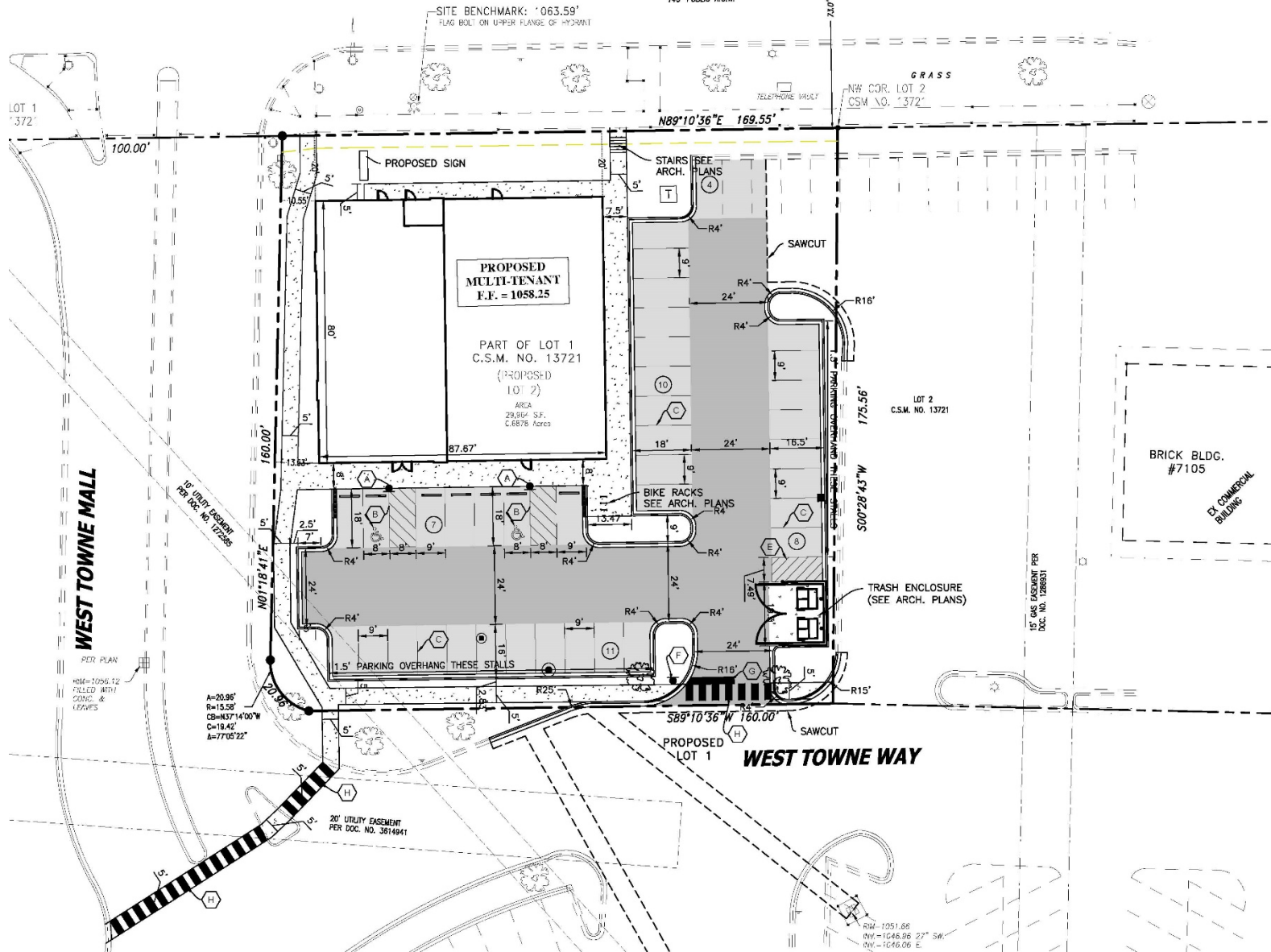


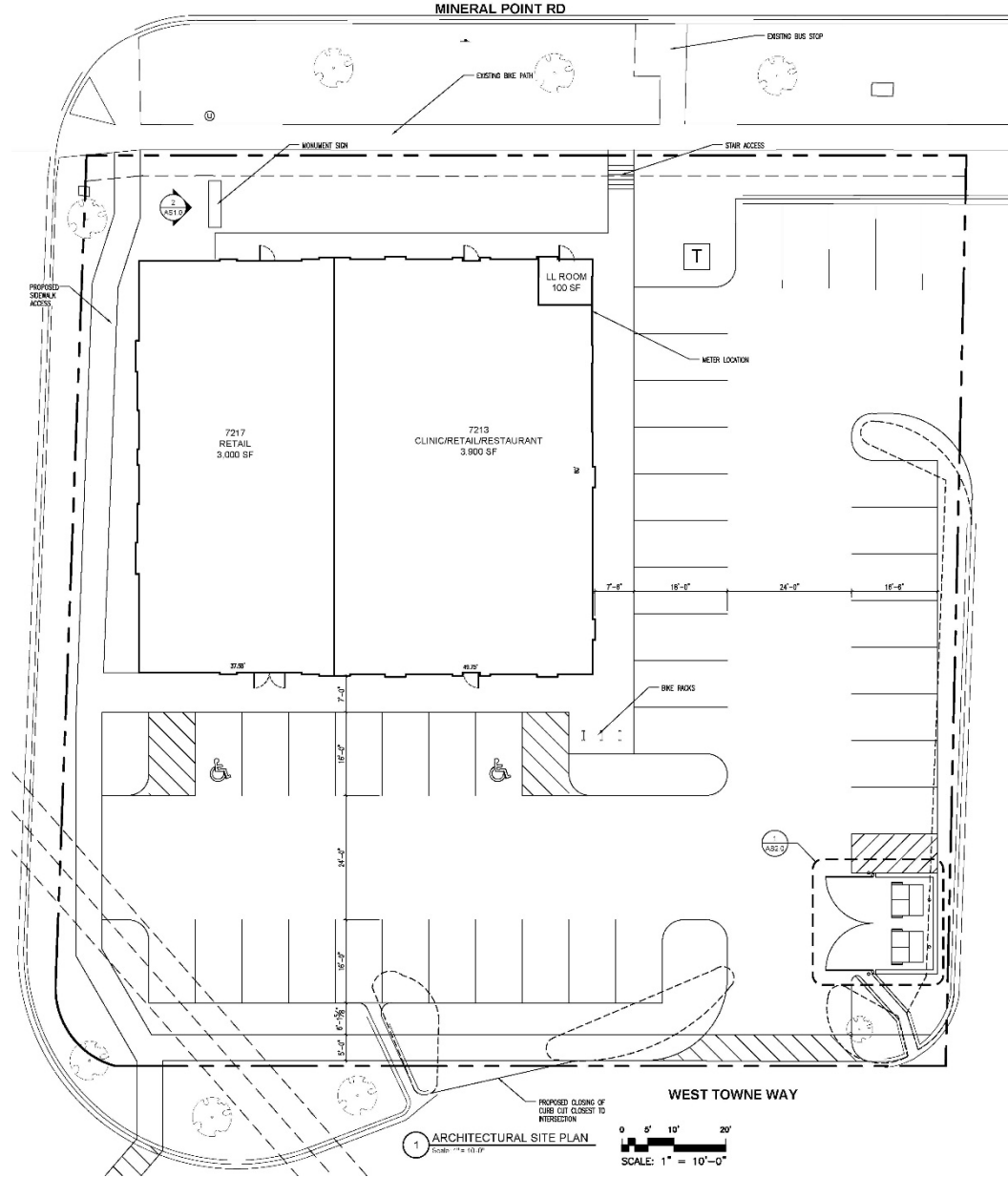


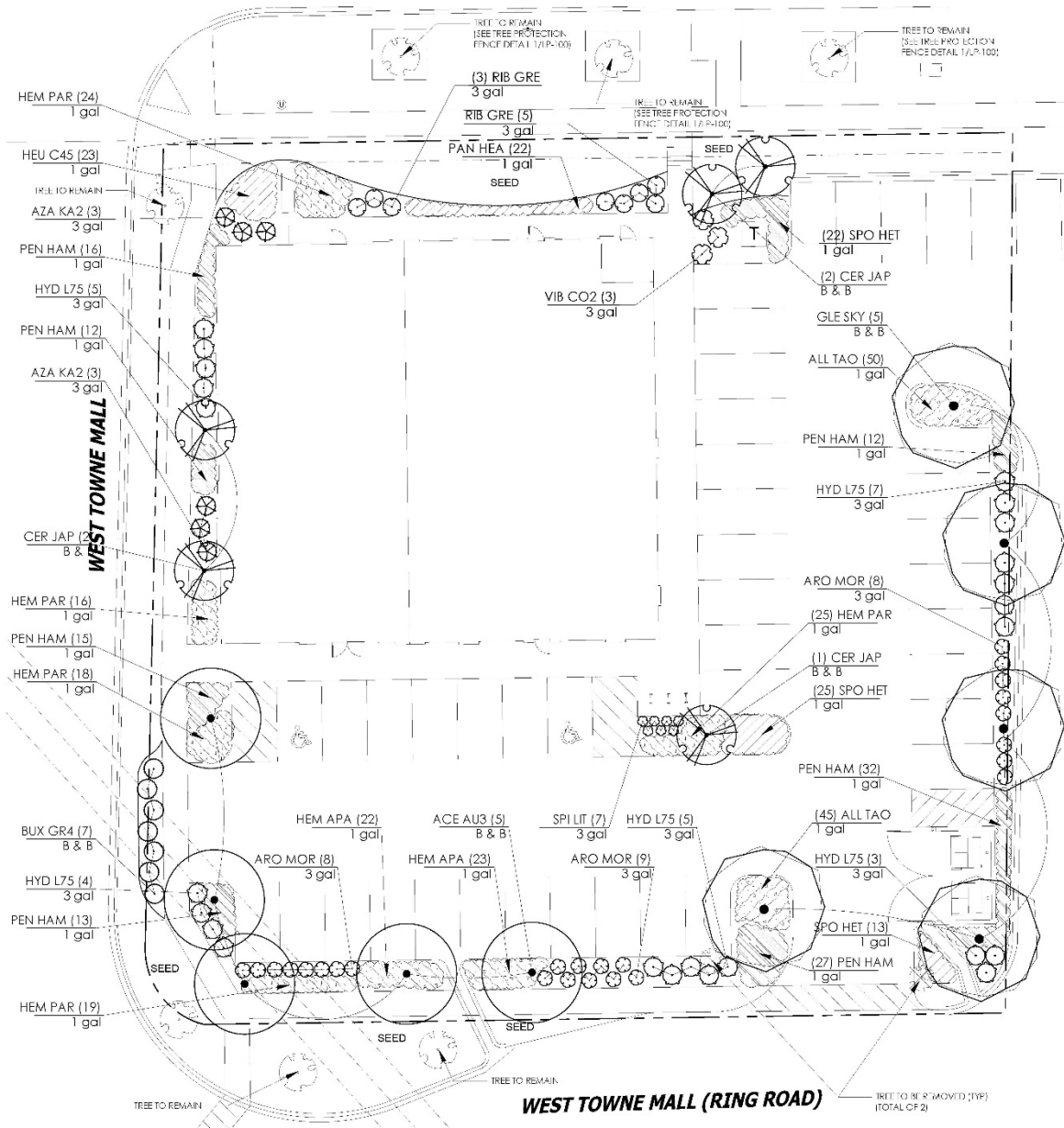
MINERAL POINT RD.

146' PUBLIC R.O.W.

SITE BENCHMARK: 1063.59'
FLAG BOLT ON UPPER FLANGE OF HYDRANT

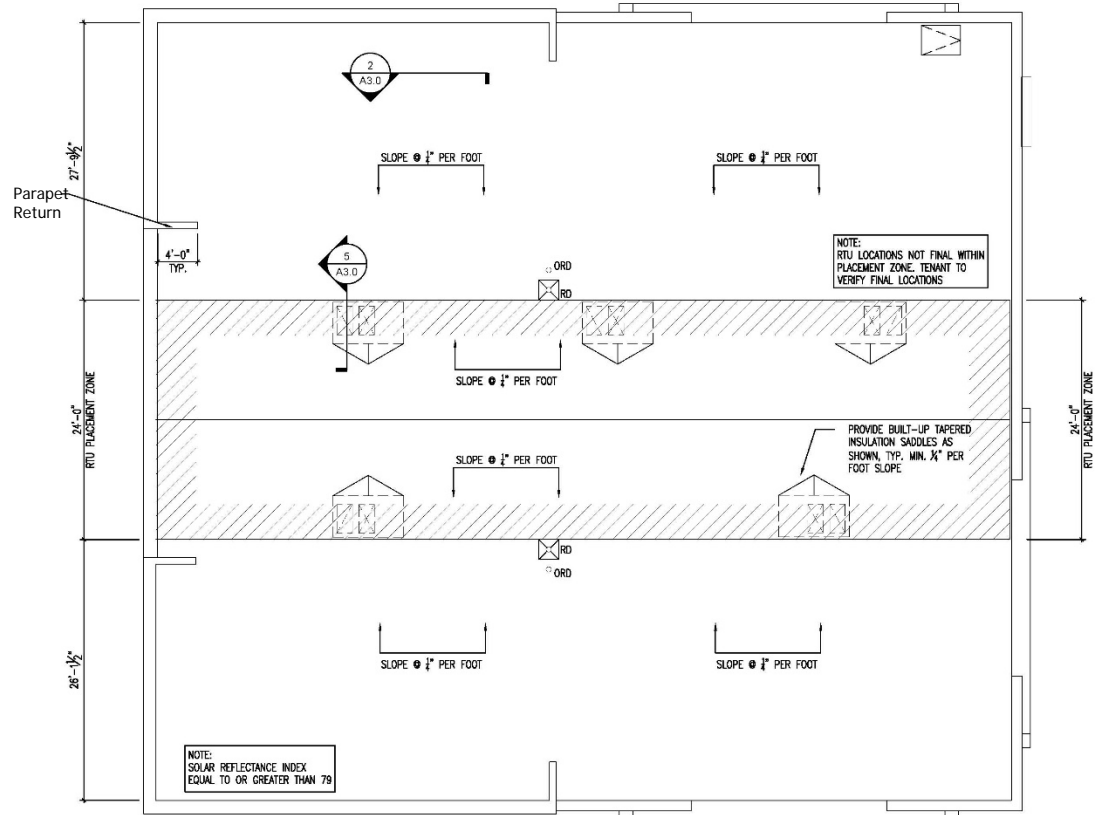
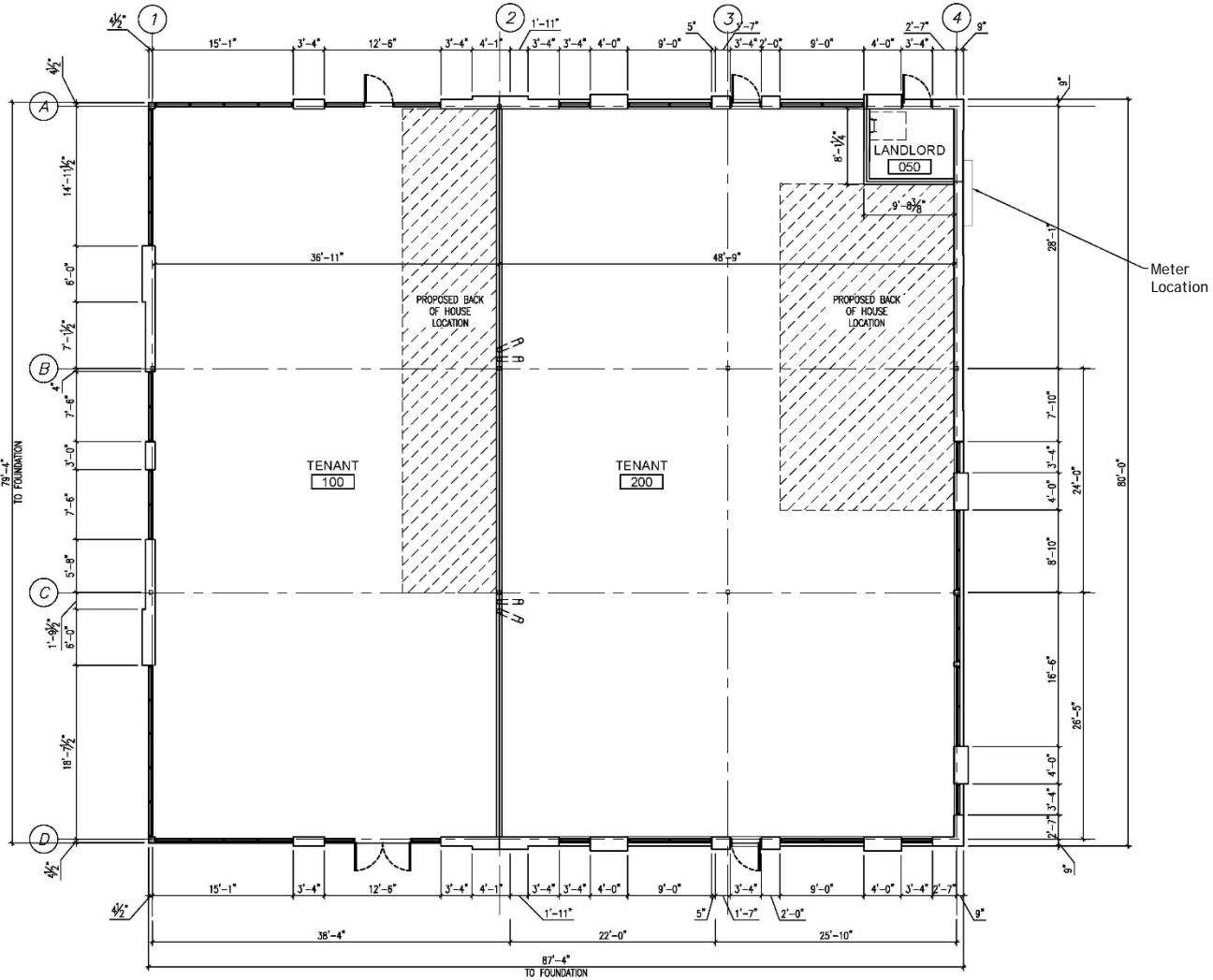


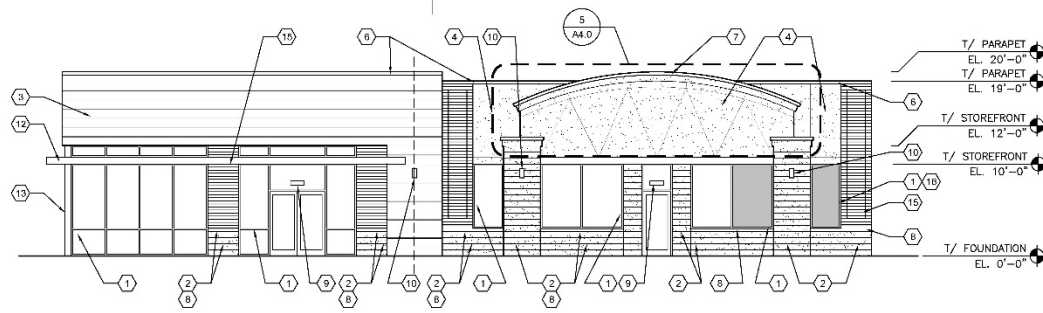




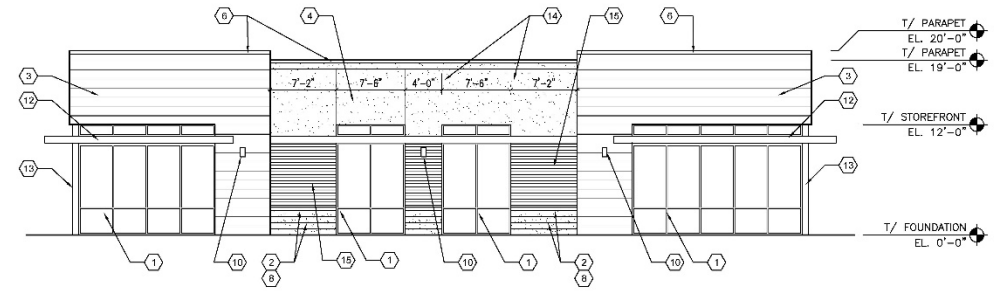
PLANT SCHEDULE

TREES	BOTANICAL / COMMON NAME	CONT	CAL	SIZE	QTY
ACE AU3	Acer freemanii 'Autumn Blaze' / Autumn Blaze Maple	B & B	3'Cal		5
CER JAP	Cercidiphyllum japonicum / Katsura Tree	B & B		5' H.	5
GLE SKY	Gleditsia triacanthos 'Skyline' / Skyline Honey Locust	B & B	3'Cal		5
SHRUBS	BOTANICAL / COMMON NAME	CONT	SIZE	QTY	
ARO MOR	Aronia melanocarpa 'Morton' TM / Iroquis Beauty Black Chokeberry	3 gal	18' H.	25	
AZA KA2	Azalea x 'Karen' / Azalea	3 gal	24' H.	6	
BUX GR4	Buxus x 'Green Mountain' / Boxwood	B & B	36' H.	7	
HYD L75	Hydrangea paniculata 'Little Quick Fire' / Little Quick Fire Hydrangea	3 gal	24' H.	24	
RIB GRE	Ribes alpinum 'Green Mound' / Green Mound Alpine Currant	3 gal	18' H.	8	
SPI LIT	Spiraea x bumalda 'Little Princess' / Little Princess Spirea	3 gal	24' H.	7	
VIB CO2	Viburnum carlesii 'Compactum' / Korean Spice Viburnum	3 gal	24' H.	3	
GROUND COVERS	BOTANICAL / COMMON NAME	CONT	SPACING	QTY	
ALL TAO	Allium x 'Millenium' / Millenium Ornamental Onion	1 gal	18' o.c.	95	
HEM APA	Hemerocallis x 'Chicago Apache' / Chicago Apache Daylily	1 gal	24' o.c.	45	
HEM PAR	Hemerocallis x 'Pardon Me' / Pardon Me Daylily	1 gal	24' o.c.	102	
HEU C45	Heuchera x 'Caramel' / Caramel Coral Bells	1 gal	24' o.c.	23	
PAN HEA	Panicum virgatum 'Heavy Metal' / Blue Switch Grass	1 gal	24' o.c.	22	
PEN HAM	Pennisetum alopecuroides 'Hameln' / Hameln Dwarf Fountain Grass	1 gal	24' o.c.	127	
SPO HET	Sporobolus heterolepis / Prairie Dropseed	1 gal	24' o.c.	60	
SEED	Bluegrass, Rye and Fescue Blend with Blanket	5,100 sf			

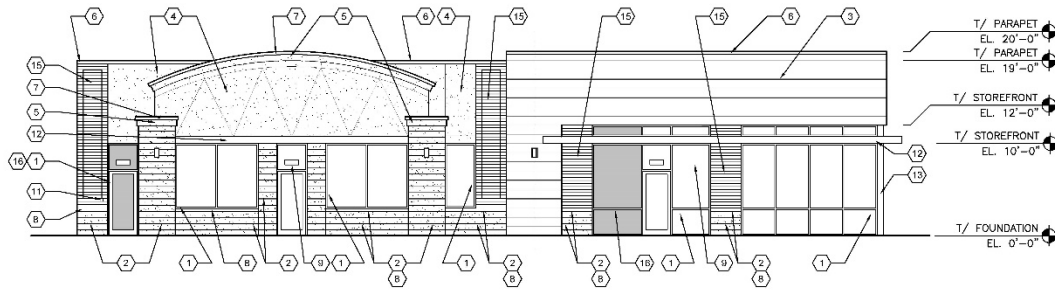




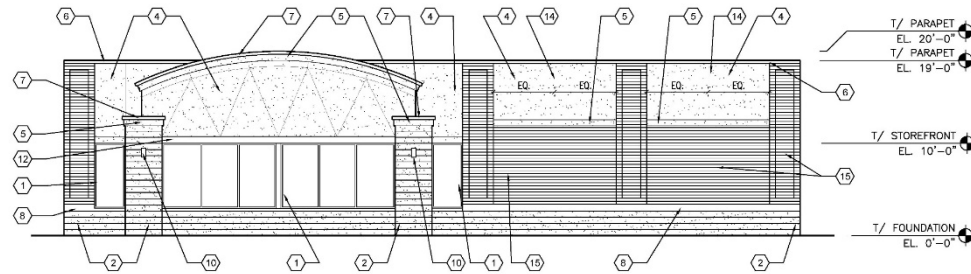
1 SOUTH ELEVATION
SCALE: 1/8" = 1'-0"



2 WEST ELEVATION
SCALE: 1/8" = 1'-0"



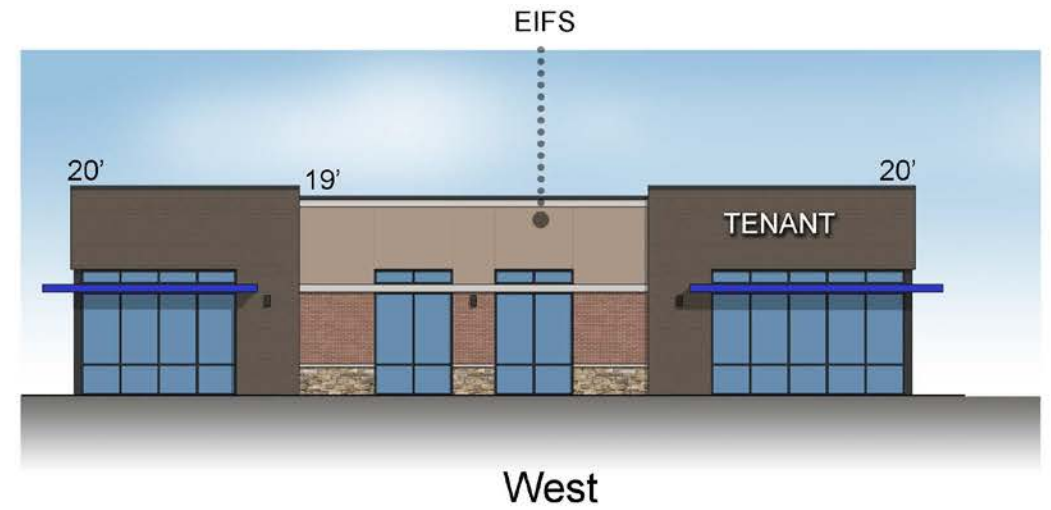
3 NORTH ELEVATION
SCALE: 1/8" = 1'-0"



4 EAST ELEVATION
SCALE: 1/8" = 1'-0"

EXTERIOR ELEVATION KEYNOTES

- 1 4 1/2" KAWNEER IS451 ALUMINUM STOREFRONT SYSTEM W/ CLEAR 1" INSULATED GLAZING (NON-TINTED, NON-REFLECTIVE) DARK BRONZE FINISH
- 2 STONE - FRONTENAC - SHOULDICE
- 23 ANTIQUE WHITE - LATICRETE OR EQUAL
- 3 CEMENT BOARD SIDING - RICH ESPRESSO - BEADED SMOOTH - HARDIE BOARD OR EQUAL
- 4 EIFS - 382 TAMALE - SANDPEBBLE FINE - DRYVIT OR EQUAL
- 5 EIFS CORNICE - 110 VAN DYKE - SANDPEBBLE FINE - DRYVIT OR EQUAL
- 6 PRE-FINISHED ALUMINUM COPING - DARK BRONZE - UNA-CLAD OR EQUAL
- 7 PRE-FINISHED ALUMINUM COPING - ELECTRIC BLUE - UNA-CLAD OR EQUAL
- 8 STONE SILL - CHAMOIS - SHOULDICE SMOOTH (2 SIZES - SEE SECTIONS)
- 9 PROVIDE BUILDING ADDRESS ABOVE FRONT ENTRY DOOR & ON REAR ACCESS DOOR
- 10 EXTERIOR WALL SCONCES MOUNTED AT 9'-0" AFF TO CENTER OF J-BOX
- 11 KNOX BOX AT 42" AFF - 3200 SERIES - DARK BRONZE
- 12 PRE-MANUFACTURED ALUMINUM SUNSHADE CANOPY - BLUE
- 13 PRE-FINISHED ALUMINUM BREAKMETAL - DARK BRONZE
- 14 EIFS REVEAL - SEE WALL SECTION FOR DETAIL
- 15 BRICK - HARVEST BLEND M/S - BRICKCRAFT
- 56 DESERT KHAKI GROUT - LATICRETE OR EQUAL
- 16 SPANDREL GLAZING - LIGHT WHITE



GLAZING CALCULATIONS							
	GLAZING LENGTH	WALL LENGTH	GLAZING PERCENTAGE (PER LENGTH)	GLAZING AREA (SF)	WALL AREA (SF)	GLAZING PERCENTAGE (PER AREA)	SPANDREL PERCENTAGE
NORTH	55'-8"	87'-8"	63.5%	547	1,184	46.2%	17.4%
EAST	32'-0"	80'-0"	40.0%	225	1,080	20.8%	N/A
SOUTH	56'-4"	87'-8"	64.3%	547	1,184	46.2%	10.1%
WEST	49'-8"	80'-0"	62.1%	596	1,120	53.2%	N/A

