

1 - Symmetrical facade and centered front door  
2 - Predominantly symmetrical double hung windows  
3 - Predominately gabled roof with some cross gables

4 - Significant use of dormers to create additional space  
5 - Predominantly clapboard siding with brick/stone variation  
6 - Detached Single car garage often connected by breezeway

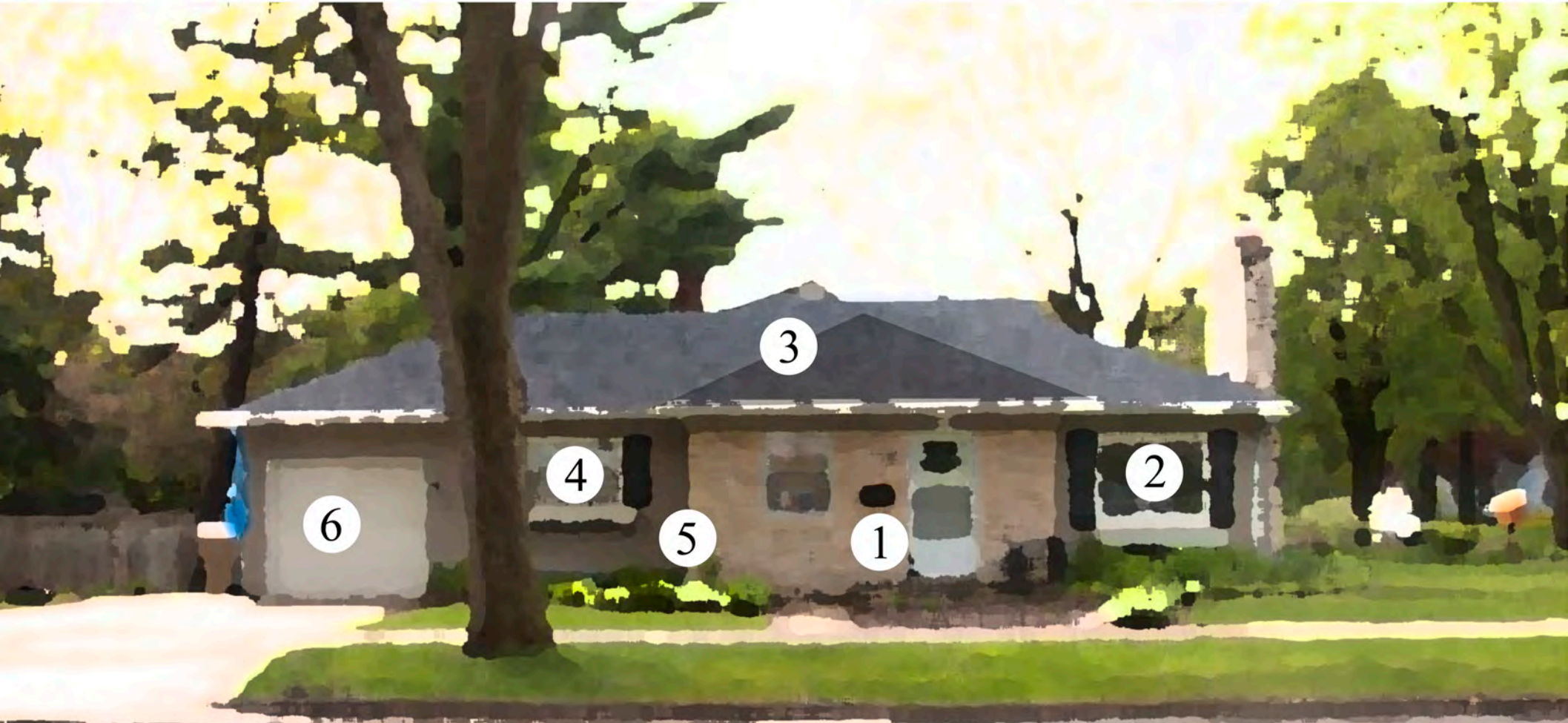




1 - Asymmetrical facade and concealed front door  
2 - Varying window sizes and placement  
3 - Predominately angular or flat roof

4 - Soaring windows often follow roof elements  
5 - Multiple natural or earth tone materials  
6 - Garage or carport integrated into the facade





1 - Asymmetrical facade and front door  
2 - Large picture window  
3 - Predominately hip roof

4 - Small bedroom windows  
5 - Multiple materials  
6 - Attached single car garage integrated into the facade