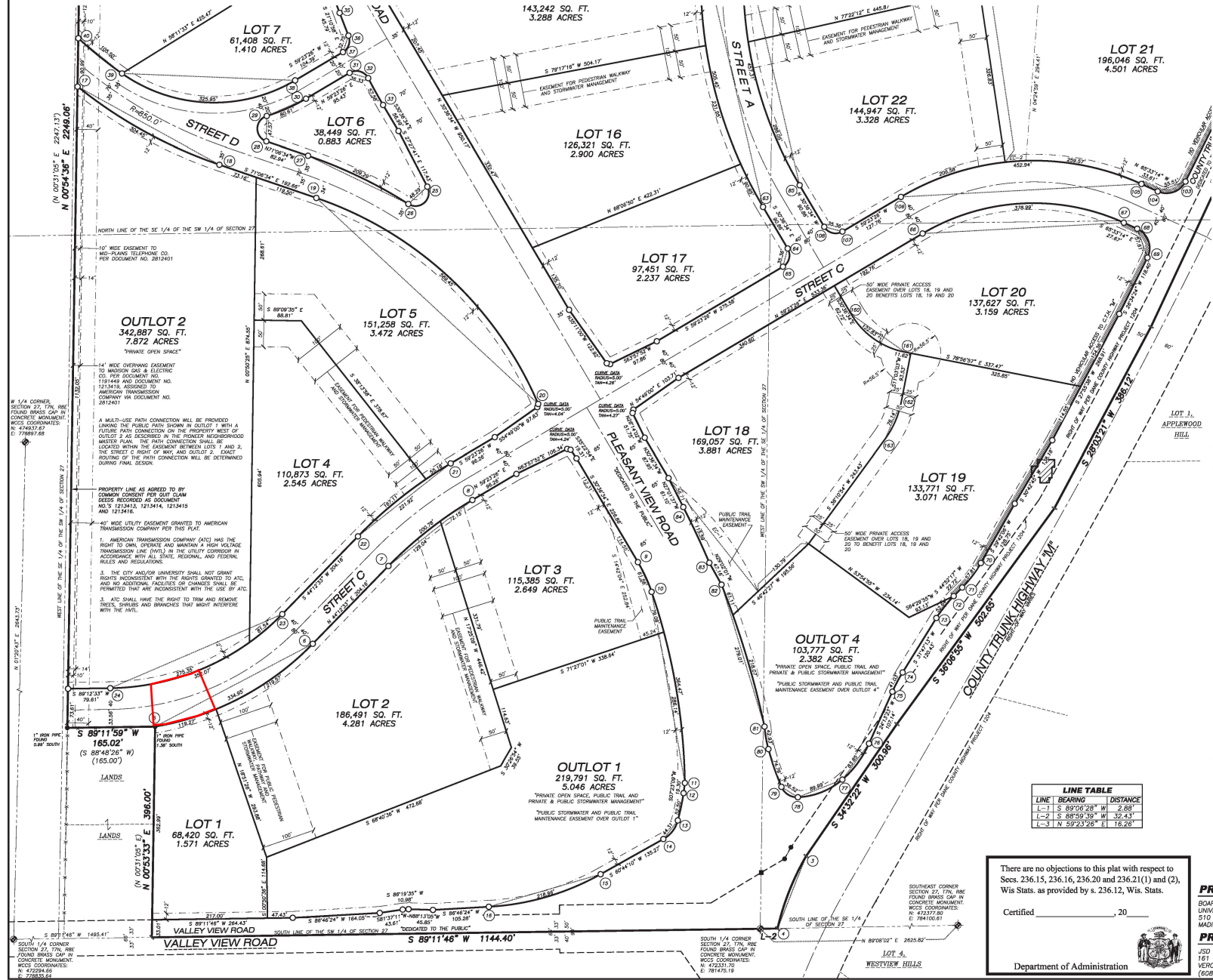
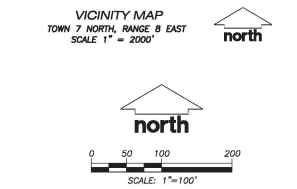
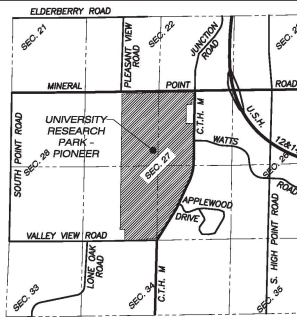


UNIVERSITY RESEARCH PARK - PIONEER

PART OF THE NORTHWEST 1/4 AND SOUTHWEST 1/4 OF THE NORTHEAST 1/4, PART OF THE NORTHWEST 1/4 AND SOUTHWEST 1/4 OF THE SOUTHWEST 1/4, PART OF THE NORTHEAST 1/4 AND SOUTHEAST 1/4 OF THE SOUTHWEST 1/4, AND PART OF THE SOUTHWEST 1/4 AND NORTHEAST 1/4 OF THE NORTHWEST 1/4, ALL IN SECTION 27, TOWN 7 NORTH, RANGE 8 EAST, CITY OF MADISON, DANE COUNTY, WISCONSIN



- LEGEND**
- SECTION CORNER MONUMENT AS NOTED
 - 3/4" REBAR FOUND
 - 1-1/4" REBAR FOUND
 - 1" IRON PIPE FOUND
 - CUT CROSS SET IN BOULDER
 - 1-1/4" X 24" REBAR SET, WEIGHING 4.30 LB/LIN. FT.
 - ALL OTHER LOT CORNERS ARE MARKED BY A 3/4" X 24" REBAR SET, WEIGHING 1.50 LB/LIN. FT.
 - UNMONUMENTED ANGLE POINT
 - () PREVIOUSLY RECORDED INFORMATION
 - ▬ BUILDING
 - ▬ FENCE
 - ▬ PLAT BOUNDARY LINE
 - ▬ LOT LINE
 - ▬ RIGHT-OF-WAY LINE
 - ▬ EXISTING LOT LINE
 - ▬ EASEMENT LINE
 - ▬ CENTERLINE
 - ▬ SECTION LINE
 - ▬ NO VEHICULAR ACCESS ALLOWED TO C.T.H. "M"
- UTILITY EASEMENTS - ALL UTILITY CABLES ARE TO BE INSTALLED UNDERGROUND. CABLES, PEDESTALS AND TRANSFORMERS ARE TO BE PLACED SUCH THAT THE INSTALLATION WOULD NOT DISTURB ANY SURVEY STAKE.
- THE DISTURBANCE OF A LOT CORNER BY ANYONE IS A VIOLATION OF SECTION 236.32 OF WISCONSIN STATUTES.
- UTILITY EASEMENTS AS HEREIN SET FORTH ARE FOR THE USE OF PUBLIC BODIES AND PRIVATE PUBLIC UTILITIES HAVING THE RIGHT TO SERVE THIS PLAT. THE USE OF THESE EASEMENTS IS NOT TO BE EXTENDED TO PRIVATE OR PUBLIC PRIVATE UTILITIES SUCH AS WATER, SANITARY SEWER AND STORM WATER UTILITIES, EXCEPT WHERE SPECIFICALLY NOTED ON THE PLAT.
- ARROWS INDICATE THE DIRECTION OF SURFACE DRAINAGE SWALE AT INDIVIDUAL PROPERTY LINES. SAID DRAINAGE SWALE SHALL BE GRADED WITH THE CONSTRUCTION OF EACH PRINCIPAL STRUCTURE AND MAINTAINED BY THE LOT OWNER UNLESS MODIFIED WITH THE APPROVAL OF THE CITY OF MADISON ENGINEER. THE FINAL GRADE SHALL NOT BE ALTERED BY MORE THAN 8 INCHES WITHOUT PRIOR WRITTEN CONSENT OF THE CITY OF MADISON ENGINEER AND THE APPROPRIATE UTILITY COMPANY OR COMPANIES.
- NOTES**
- BEARINGS ARE REFERENCED TO THE WISCONSIN COUNTY COORDINATE SYSTEM, DANE COUNTY ZONE, THE SOUTH LINE OF THE SOUTHWEST 1/4 OF SECTION 27, TOWNSHIP 7 NORTH, RANGE 8 EAST, BEARS S 89°11'59" W.
 - ALL STREET RIGHT-OF-WAYS WITHIN THE PLAT BOUNDARY ARE HEREBY DEDICATED TO THE PUBLIC.
 - DISTANCES SHOWN ALONG CURVES ARE CHORD LENGTHS.
 - COUNTY TRUNK HIGHWAY "M" IS A CONTROLLED ACCESS HIGHWAY PURSUANT TO CHAPTER 79, DANE COUNTY CODE OF ORDINANCES.
 - SEE SHEET 8 OF 9 FOR CURVE DATA.
 - BUILDING LOCATED IN LOT 21 WILL BE REMOVED.
 - PROPOSED VALLEY VIEW ROAD, PLEASANT VIEW ROAD, MINERAL POINT ROAD AND COUNTY HIGHWAY "M" ALIGNMENTS PROVIDED BY OTHERS.

LINE TABLE

LINE	BEARING	DISTANCE
L-1	S 89°08'28" W	2.88'
L-2	S 89°02'12" W	32.43'
L-3	N 59°23'28" E	16.28'

There are no objections to this plat with respect to Sess. 236.15, 236.16, 236.20 and 236.21(1) and (2), Wis Stats. as provided by s. 236.12, Wis. Stats.

Certified _____ 20____

PREPARED FOR:
BOARD OF REGENTS
UNIVERSITY OF WISCONSIN SYSTEM
510 CHARMANY DRIVE, SUITE 250
MADISON, WI 53718

JSD Professional Services, Inc.
Engineers • Surveyors • Planners

PREPARED BY:
JSD PROFESSIONAL SERVICES, INC.
161 HORIZON DRIVE, SUITE 101
VERONA, WISCONSIN 53593
(608) 848-5082

PROJECT NO. 03-1321 SURVEYED BY: JK
FILE NO. 02-45 DRAWN BY: SO
FELDBORG/PC CHECKED BY: JK
APPROVED BY: JSM

SHEET 1 OF 9

Department of Administration