

PROJECT:
**WARNER PARK
 PARKING LOT
 PHASE TWO
 LANDSCAPING**

**WARNER PARK
 1511 NORTHPORT
 DRIVE
 MADISON, WI 53704**

Although every effort has been made in preparing these plans and checking them for accuracy, the contractor and subcontractors must check all details and dimensions of their trade and be responsible for the same.

ITEM	DATE
Drawn by: SL	2011-12-27
Approved by: TM	xx-xx-xxxx

PUBLIC WORKS PROJECT #:
6854

SHEET TITLE:
**OVERALL
 LANDSCAPE PLAN**

SHEET NUMBER:
L-1

LEGEND

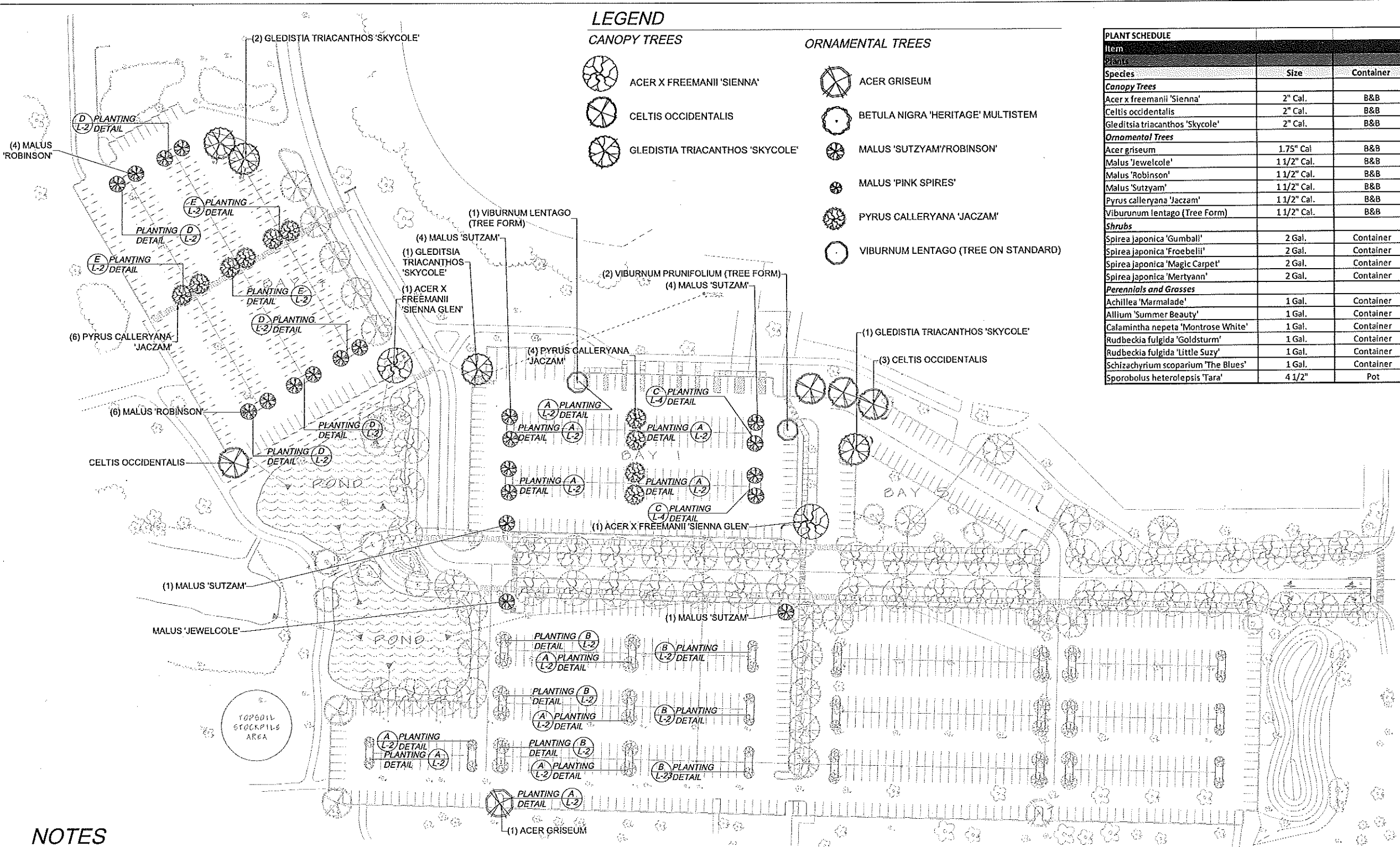
CANOPY TREES

- ACER X FREEMANII 'SIENNA'
- CELTIS OCCIDENTALIS
- GLEDISTIA TRIACANTHOS 'SKYCOLE'

ORNAMENTAL TREES

- ACER GRISEUM
- BETULA NIGRA 'HERITAGE' MULTISTEM
- MALUS 'SUTZYAM' / ROBINSON
- MALUS 'PINK SPIRES'
- PYRUS CALLERYANA 'JACZAM'
- VIBURNUM LENTAGO (TREE ON STANDARD)

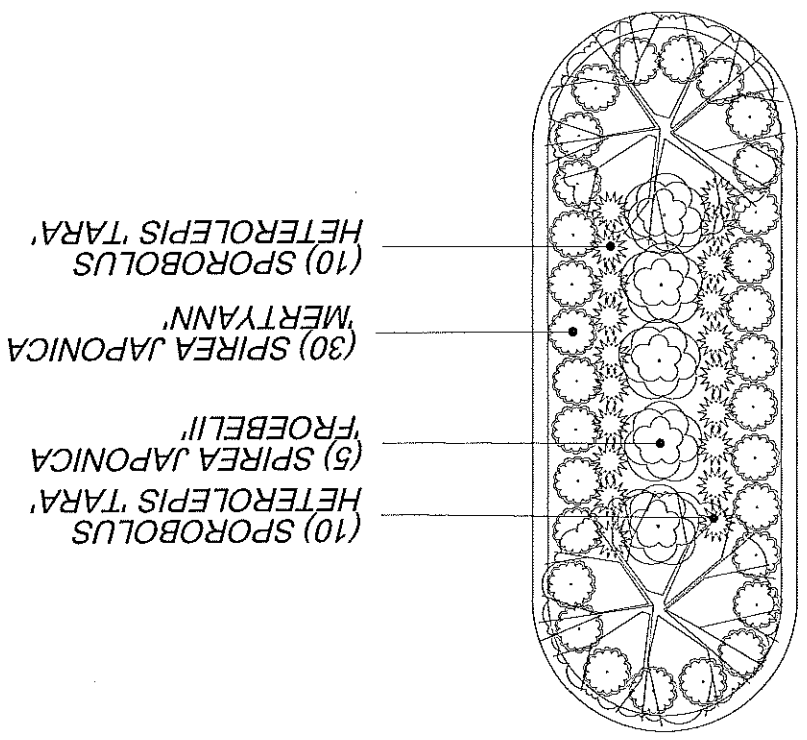
PLANT SCHEDULE			
Item	Size	Container	Quantity
Canopy Trees			
Acer x freemanii 'Sienna'	2" Cal.	B&B	2
Celtis occidentalis	2" Cal.	B&B	4
Gleditsia triacanthos 'Skycole'	2" Cal.	B&B	4
Ornamental Trees			
Acer griseum	1.75" Cal.	B&B	10
Malus 'Jewelcole'	1 1/2" Cal.	B&B	1
Malus 'Robinson'	1 1/2" Cal.	B&B	10
Malus 'Sutzyam'	1 1/2" Cal.	B&B	7
Pyrus calleryana 'Jaczam'	1 1/2" Cal.	B&B	10
Viburnum lentago (Tree Form)	1 1/2" Cal.	B&B	1
Shrubs			
Spirea japonica 'Gumball'	2 Gal.	Container	42
Spirea japonica 'Froebeli'	2 Gal.	Container	10
Spirea japonica 'Magic Carpet'	2 Gal.	Container	337
Spirea japonica 'Mertyann'	2 Gal.	Container	60
Perennials and Grasses			
Achillea 'Marmalade'	1 Gal.	Container	45
Allium 'Summer Beauty'	1 Gal.	Container	205
Calamintha nepeta 'Montrose White'	1 Gal.	Container	230
Rudbeckia fulgida 'Goldsturm'	1 Gal.	Container	66
Rudbeckia fulgida 'Little Suzy'	1 Gal.	Container	342
Schizachyrium scoparium 'The Blues'	1 Gal.	Container	290
Sporobolus heterolepis 'Tara'	4 1/2"	Pot	249



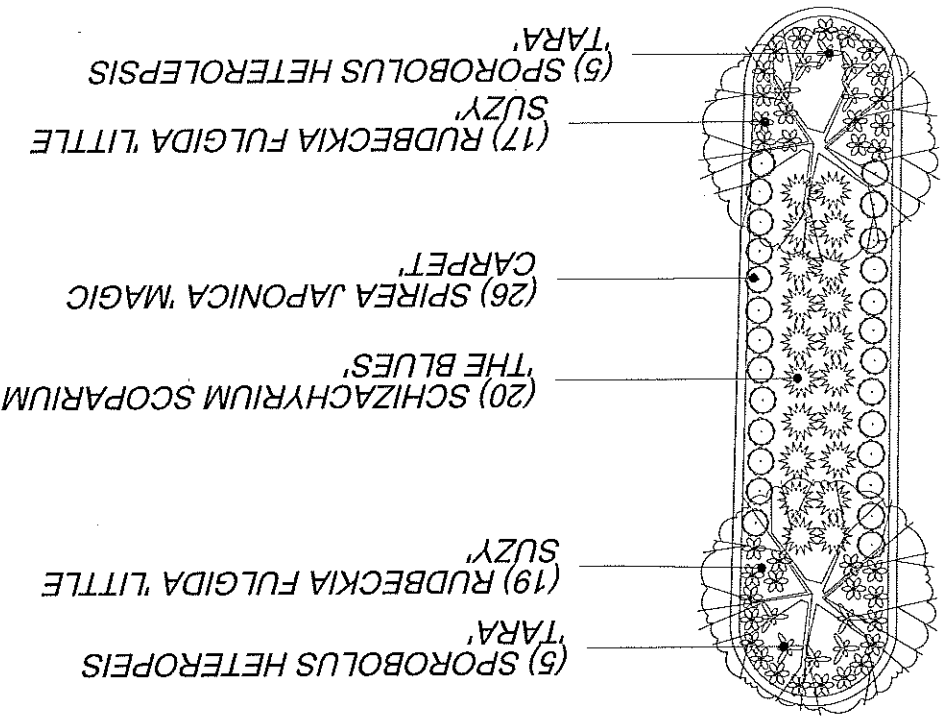
NOTES

1. Refer to City of Madison Standard Specifications for Public Works Construction. All landscaping shall be installed per City of Madison Specifications.
2. Terrace and general seeding is excluded from this contract.
3. Half islands, shall have half the number of plants as shown on the detail, rounded up for odd quantities.
4. All half islands abutting Warner Park lawn shall be shoveled edged.
5. Landscaping for this contract shall begin after final construction of parking lots. The construction schedule for this planting is estimated to be from May 20, 2012 to June 29, 2012.
6. Contractor is required to fine grade all islands proposed with landscape plants so that topsoil is within 2-4" of top of curb.

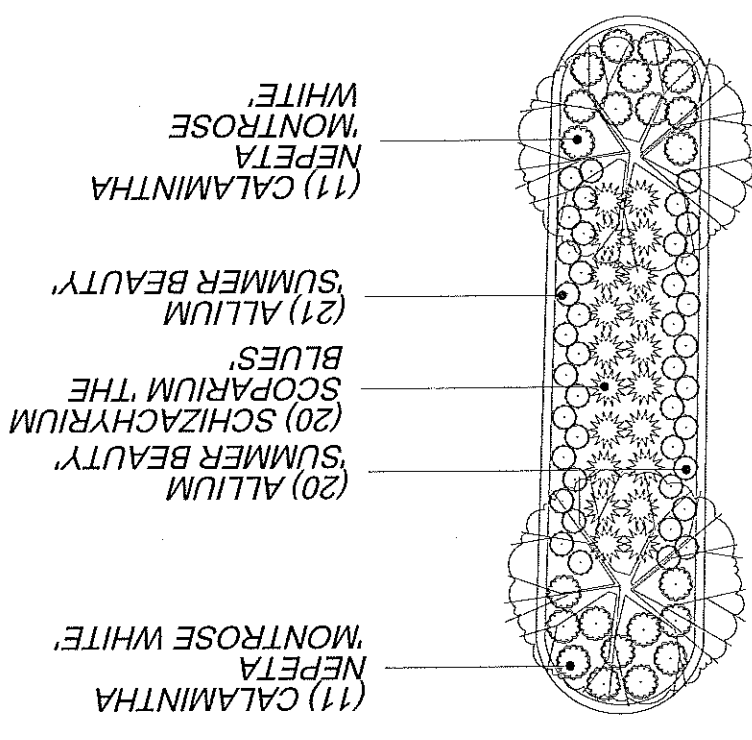
C PLANTING
L-2
DETAIL



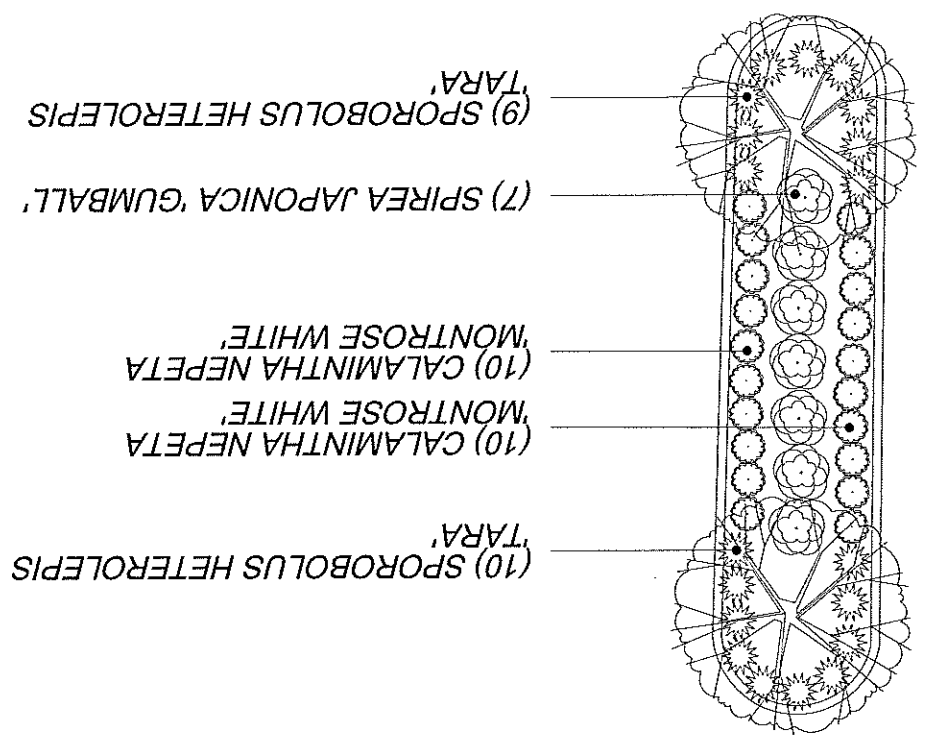
A PLANTING
L-2
DETAIL



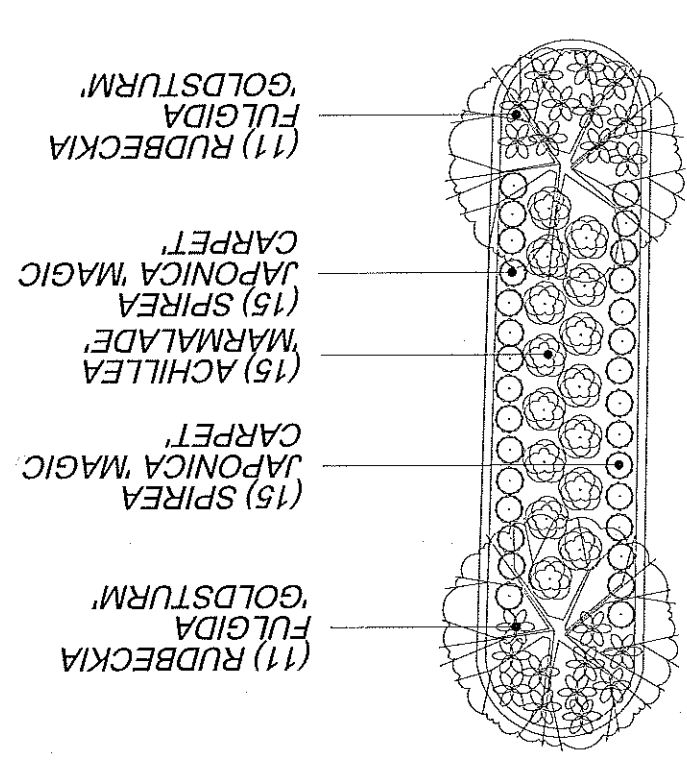
D PLANTING
L-2
DETAIL



B PLANTING
L-2
DETAIL



E PLANTING
L-2
DETAIL



L-2

SHEET NUMBER:

DETAILED LANDSCAPE PLANS

SHEET TITLE:

6854

PUBLIC WORKS PROJECT #:

Approved by: TM

Drawn by: SL

2011-12-27

DATE

ITEM

Although every effort has been made in preparing these plans and checking them for accuracy, the contractor and subcontractors must check all details and dimensions of their trade and be responsible for the same.

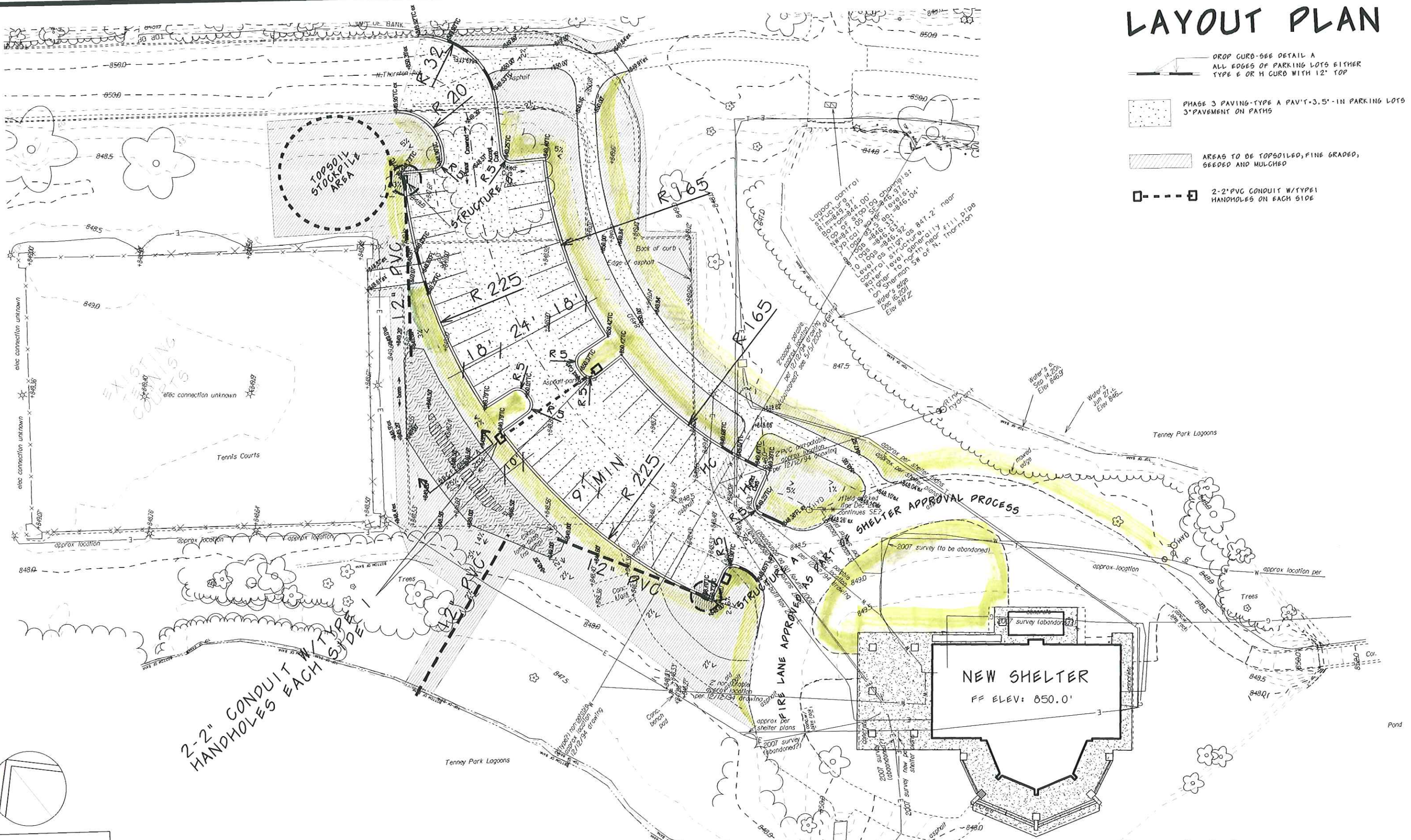
WARNER PARK
1511 NORTHPORT
DRIVE
MADISON, WI 53704





PROJECT:
WARNER PARK
PARKING LOT
PHASE TWO
LANDSCAPING

Graphical Scale
0 120 ft

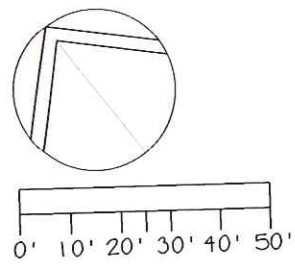
City of Madison
Department of Public Works
PARKS DIVISION
City-County Building, Suite 104
210 Martin Luther King, Jr. Blvd.
PO Box 2987
Madison, WI 53701-2987
play
MADISON
PARKS

LAYOUT PLAN

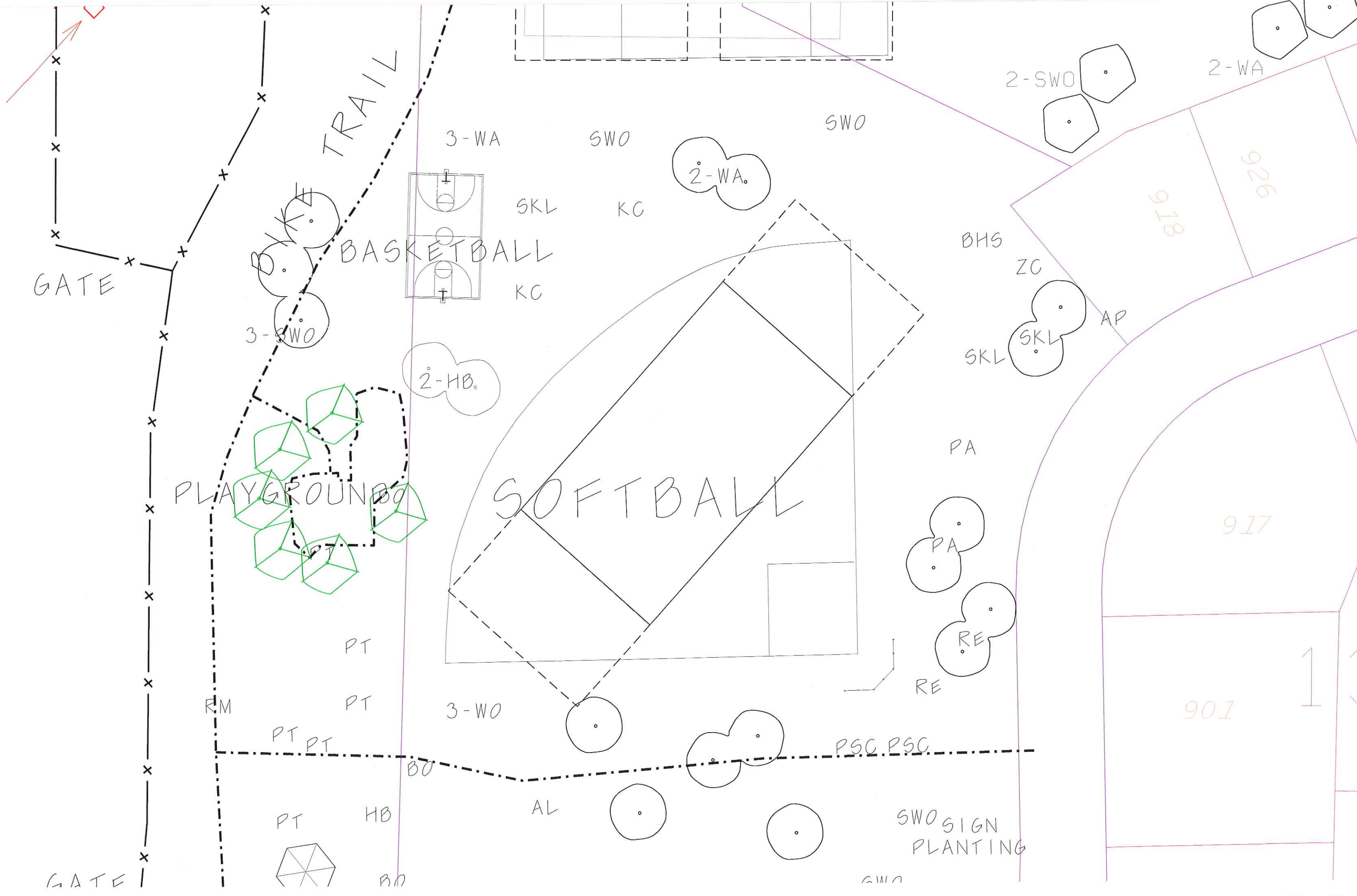


-  DROP CURB-SEE DETAIL A
ALL EDGES OF PARKING LOTS EITHER
TYPE E OR H CURB WITH 12" TOP
-  PHASE 3 PAVING-TYPE A PAV'T-3.5'-IN PARKING LOTS
3' PAVEMENT ON PATHS
-  AREAS TO BE TOPSOILED, FINE GRADED,
SEEDED AND MULCHED
-  2-2" PVC CONDUIT W/TYP E
HANDHOLES ON EACH SIDE

2-2" CONDUIT W/TYP E
HANDHOLES EACH
SIDE



TENNEY PARK SHELTER PARKING LOT PLAN



GATE

TRAIL

BASKETBALL

PLAYGROUND

SOFTBALL

GATE

3-WA

SWO

SWO

2-SWO

2-WA

2-WA

SKL

KC

KC

3-SWO

2-HB

BHS

ZC

AP

SKL

SKL

PA

PA

RE

RE

PT

PT

PT PT

RM

3-WO

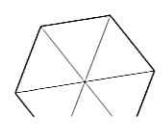
PSC PSC

PT

HB

AL

SWO SIGN PLANTING



BO

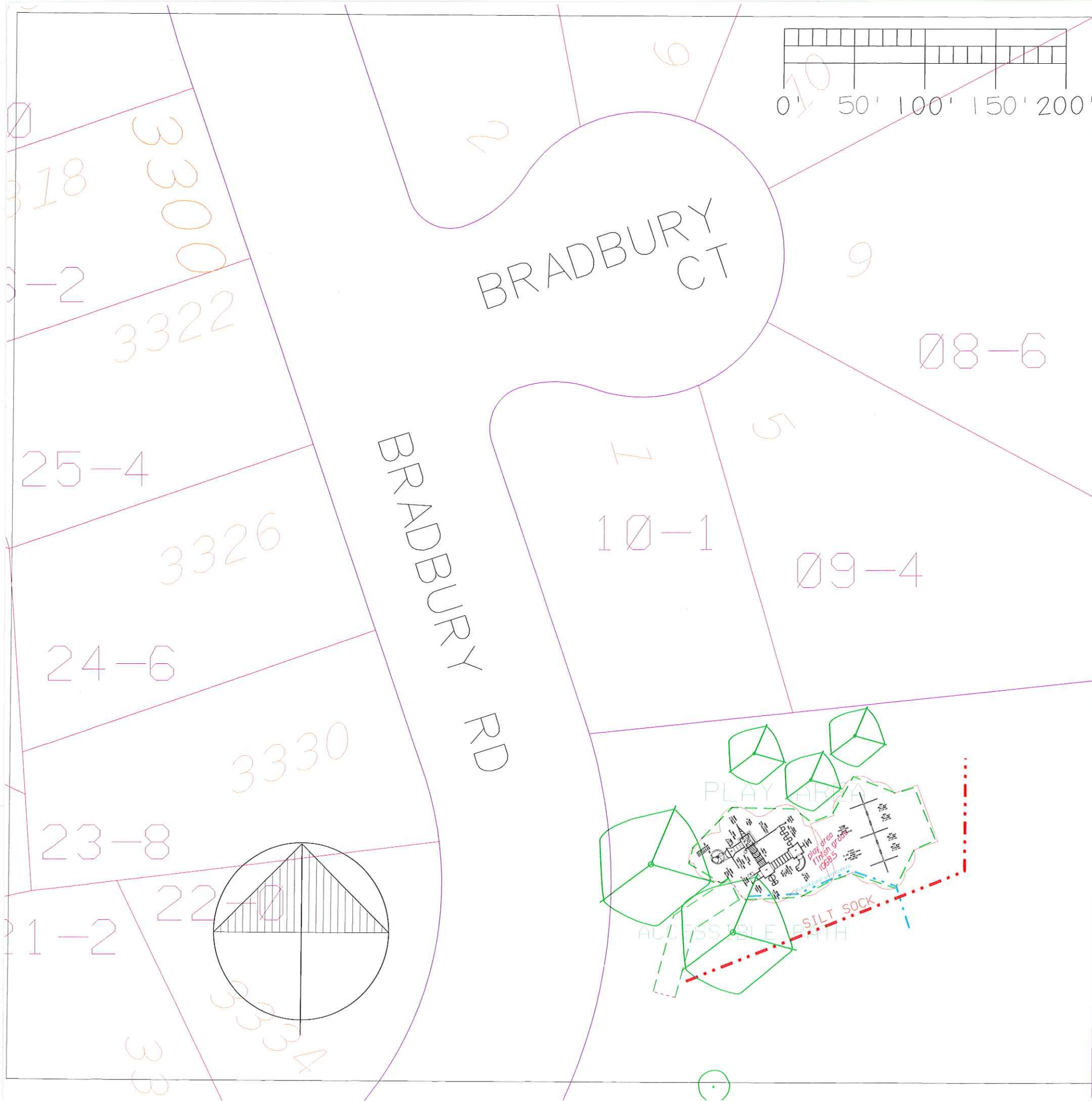
GWO

918

926

917

901



City of Madison
 Department of Public Works
 PARK DIVISION
 City-County Building, Suite 104
 210 Martin Luther King, Jr. Blvd.
 PO Box 2987
 Madison, WI 53701-2987

PROJECT:
**QUARRY COVE
 PARK**

QUARRY COVE PARK
 3333 Bradbury Rd
 Madison, WI 53719

Although every effort has been made in preparing these plans and checking them for accuracy, the contractor and subcontractors must check all details and dimensions of their trade and be responsible for the same.

ITEM	DATE
DRAWN: WAB	2-14-2011
APPROVED BY: WAB	2-18-2011

PUBLIC WORKS PROJECT #:
 6854

SHEET TITLE:
PHASE 1
 Playground Development

SHEET NUMBER:
P-1

City of Madison
 Department of Public Works
 PARK DIVISION
 City-County Building, Suite 104
 210 Martin Luther King, Jr. Blvd.
 PO Box 2987
 Madison, WI 53701-2987

PROJECT:
 MONONA PARK
 PLAYGROUND

MONONA PARK
 @ 4500 KAY ST.
 MADISON, WI 53716

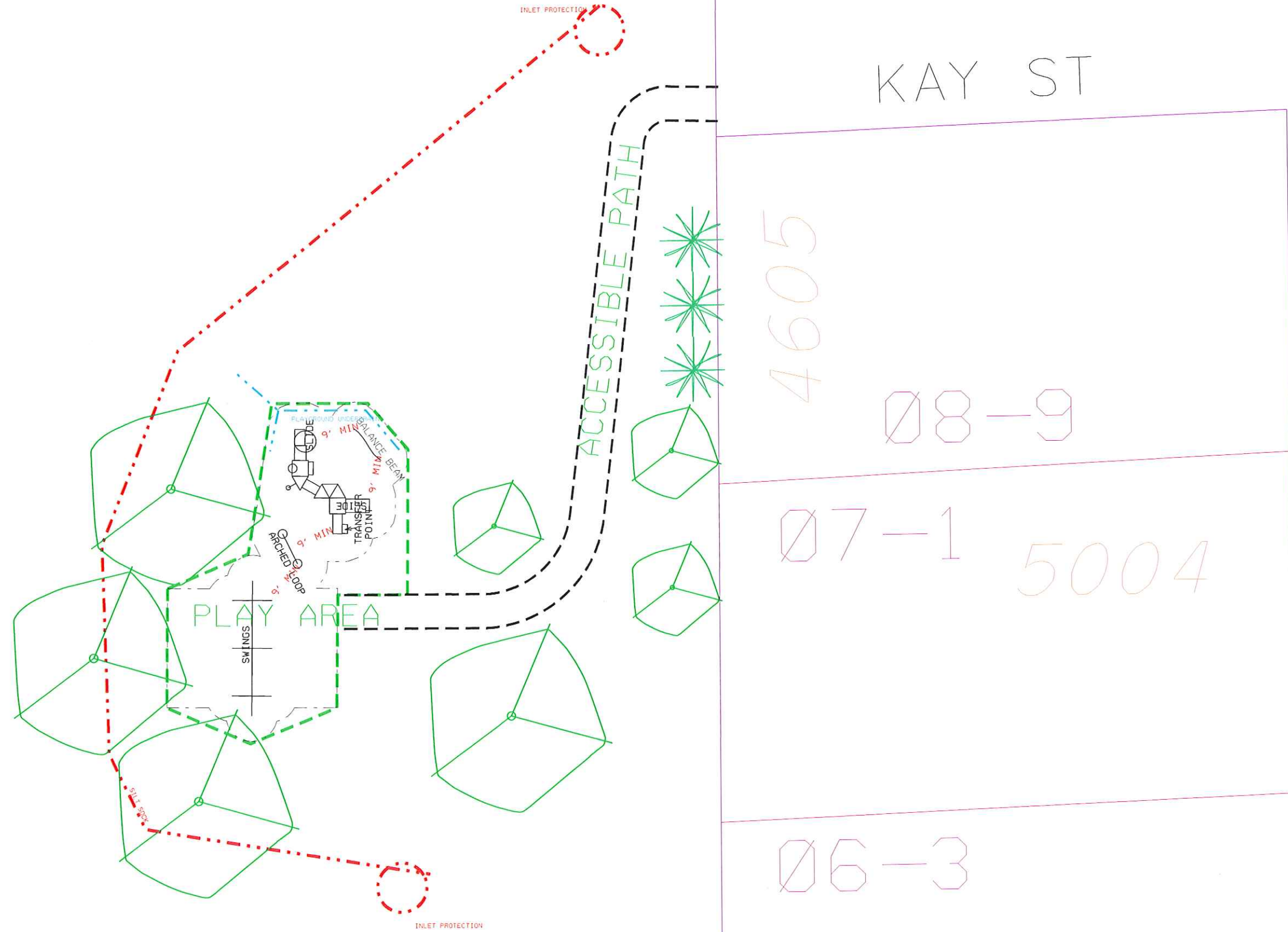
Although every effort has been made in preparing these plans and checking them for accuracy, the contractor and subcontractors must check all details and dimensions of their trade and be responsible for the same.

ITEM	DATE
DRAWN BY: WAB	2-14-2011
APPROVED BY: WAB	2-18-2011

PUBLIC WORKS PROJECT #:
 6854

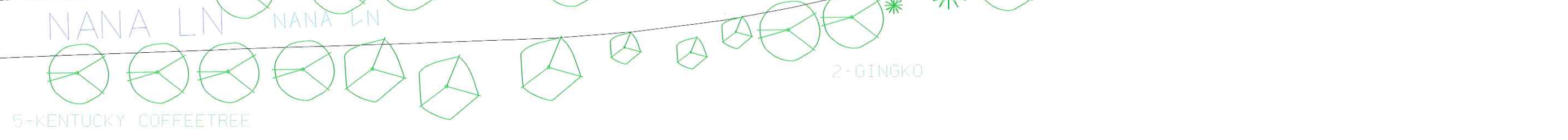
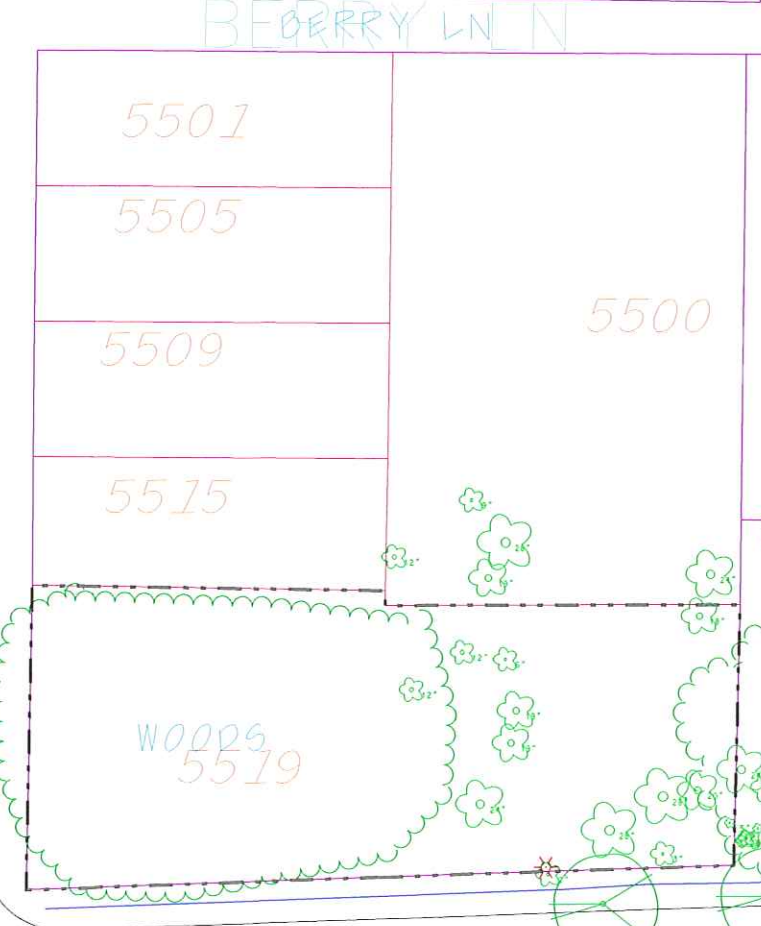
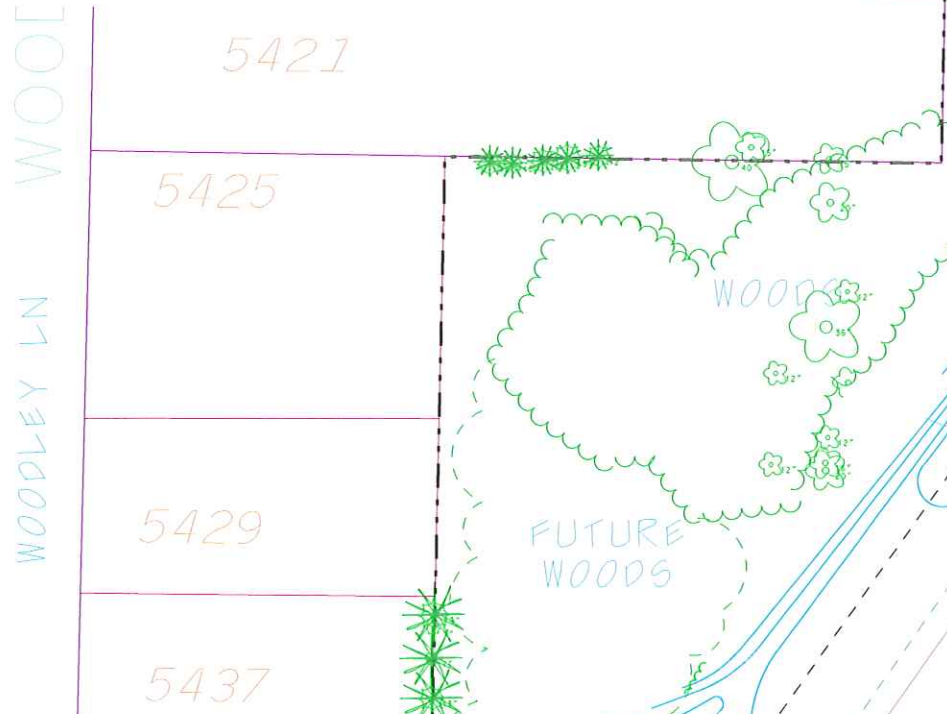
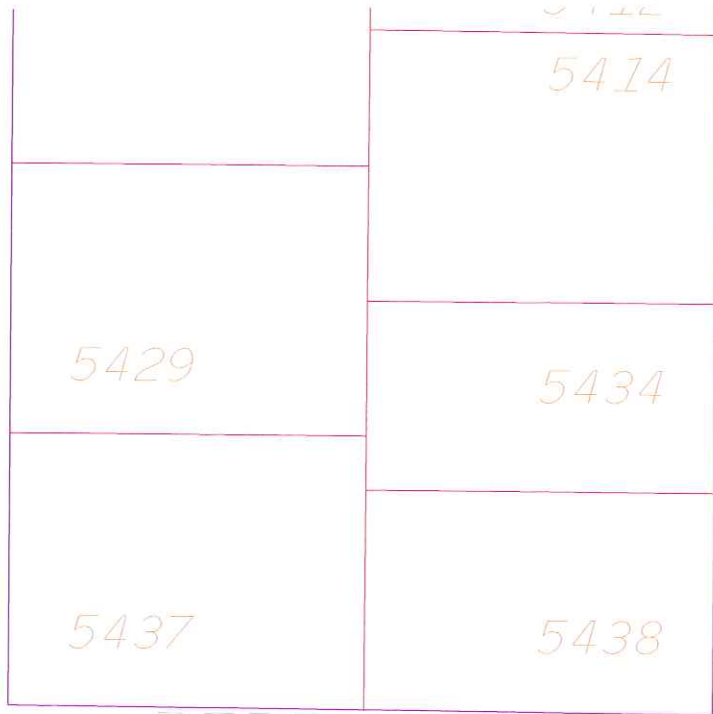
SHEET TITLE:
 PLAYGROUND
 DEVELOPMENT

SHEET NUMBER:
 P - 1



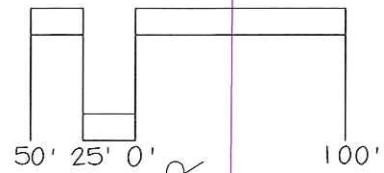
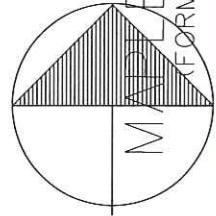
ESTHER BEACH

ESTHER BEACH RD



MANCHESTER RD

- KEY
- AAB-AMELANCHIER 'AUTUMN BRILLIANCE'
 - AL-AMERICAN LINDEN
 - BHS-BALCK HILLS SPRUCE
 - FM-FREEMAN RED MAPLE
 - HB-HACKBERRY
 - IW-IRONWOOD
 - JTL-JAPANESE TREE LILAC
 - KC-KENTUCKY COFFEETREE
 - RO-RED OAK
 - SKH-SKYLINE HONEYLOCUST
 - SWO-SWAMP WHITE OAK
 - WP-WHITE PINE
 - ZFC-ZUMI FLOWERING CRAB



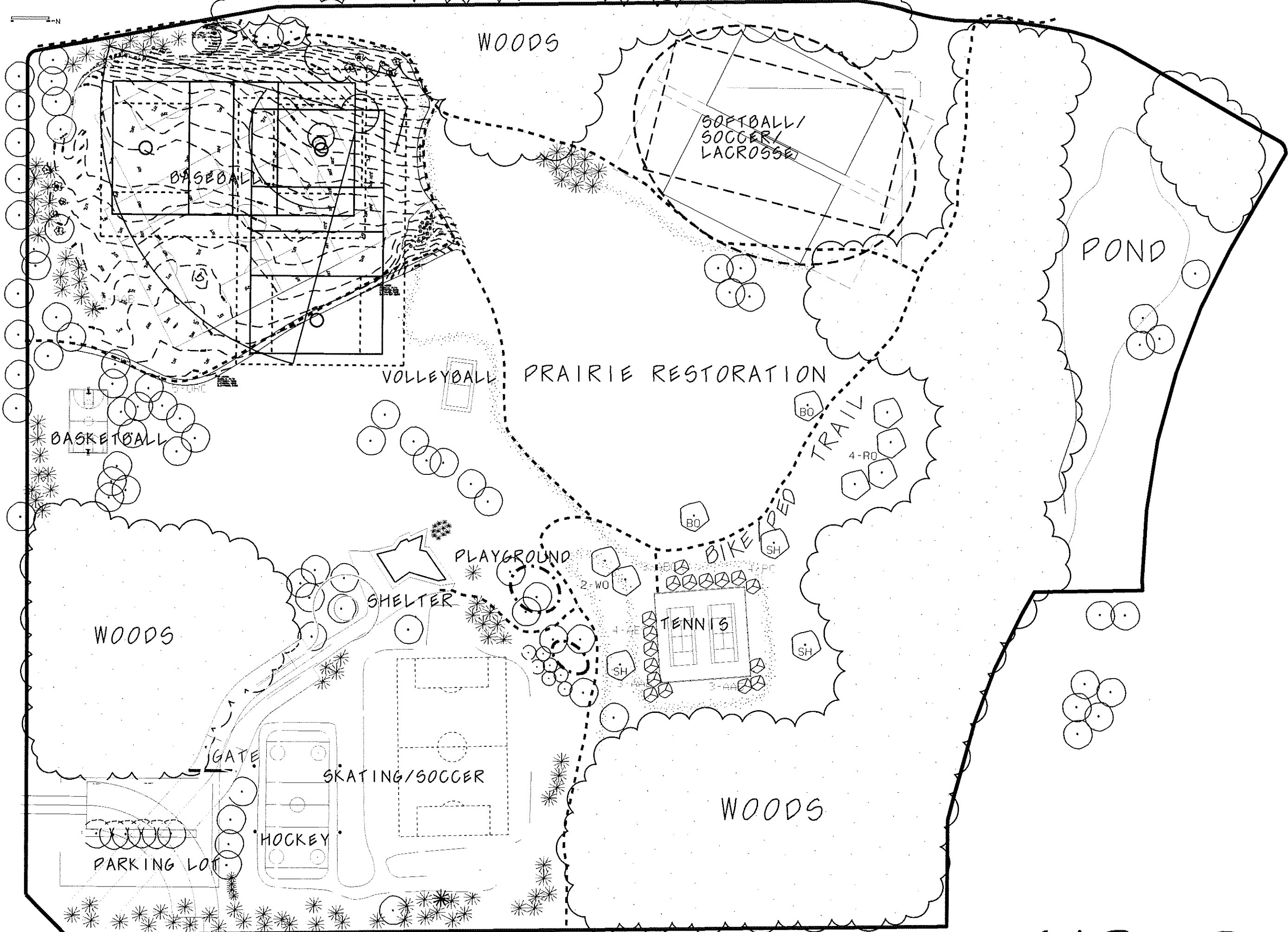
A MASTER PLAN FOR:
SANDSTONE PARK



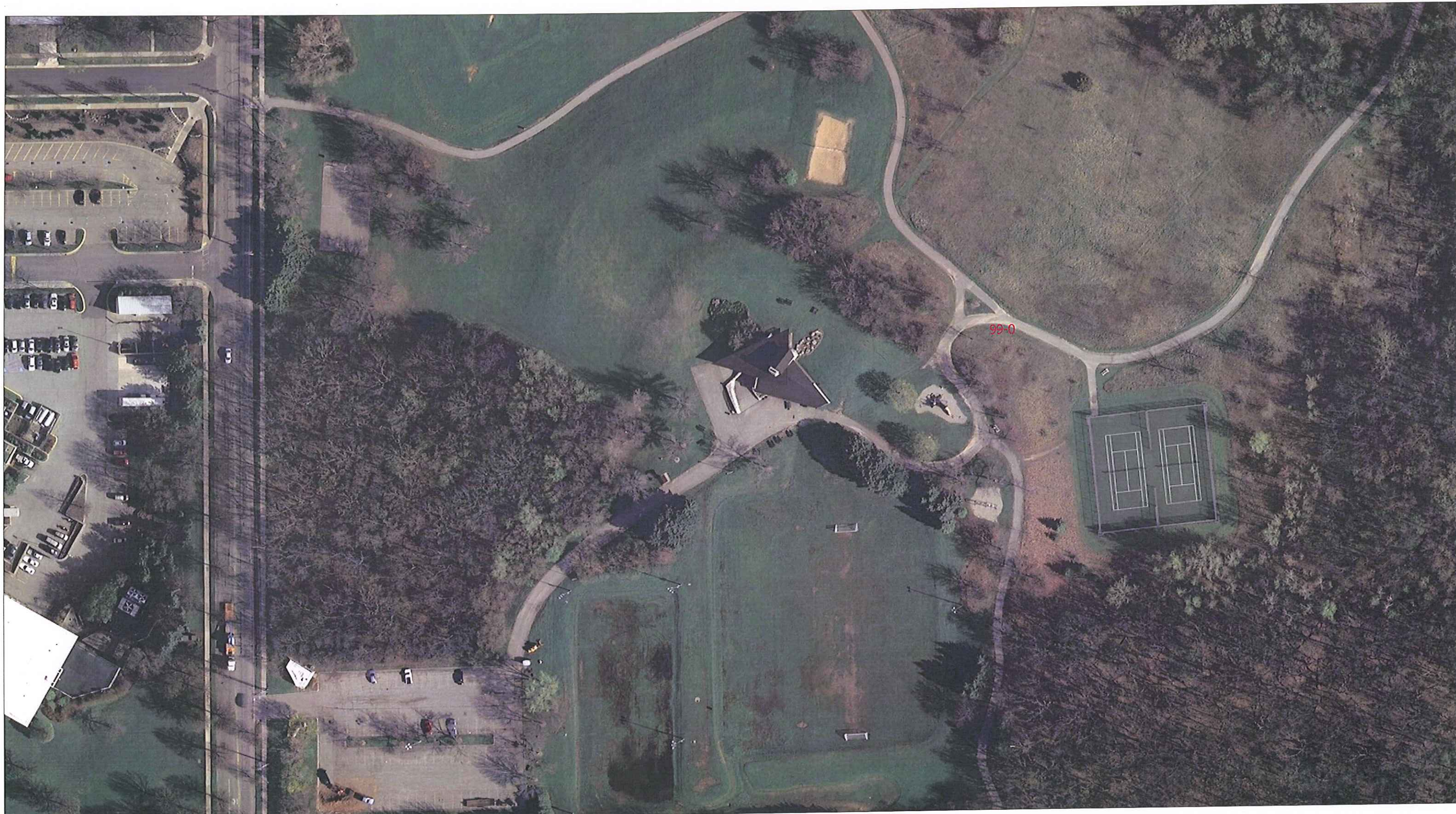
MAPLE GROVE DR

3865*CDM

3802*CDM



GARNER PARK



Time: 1/18/2012 11:10:42 AM

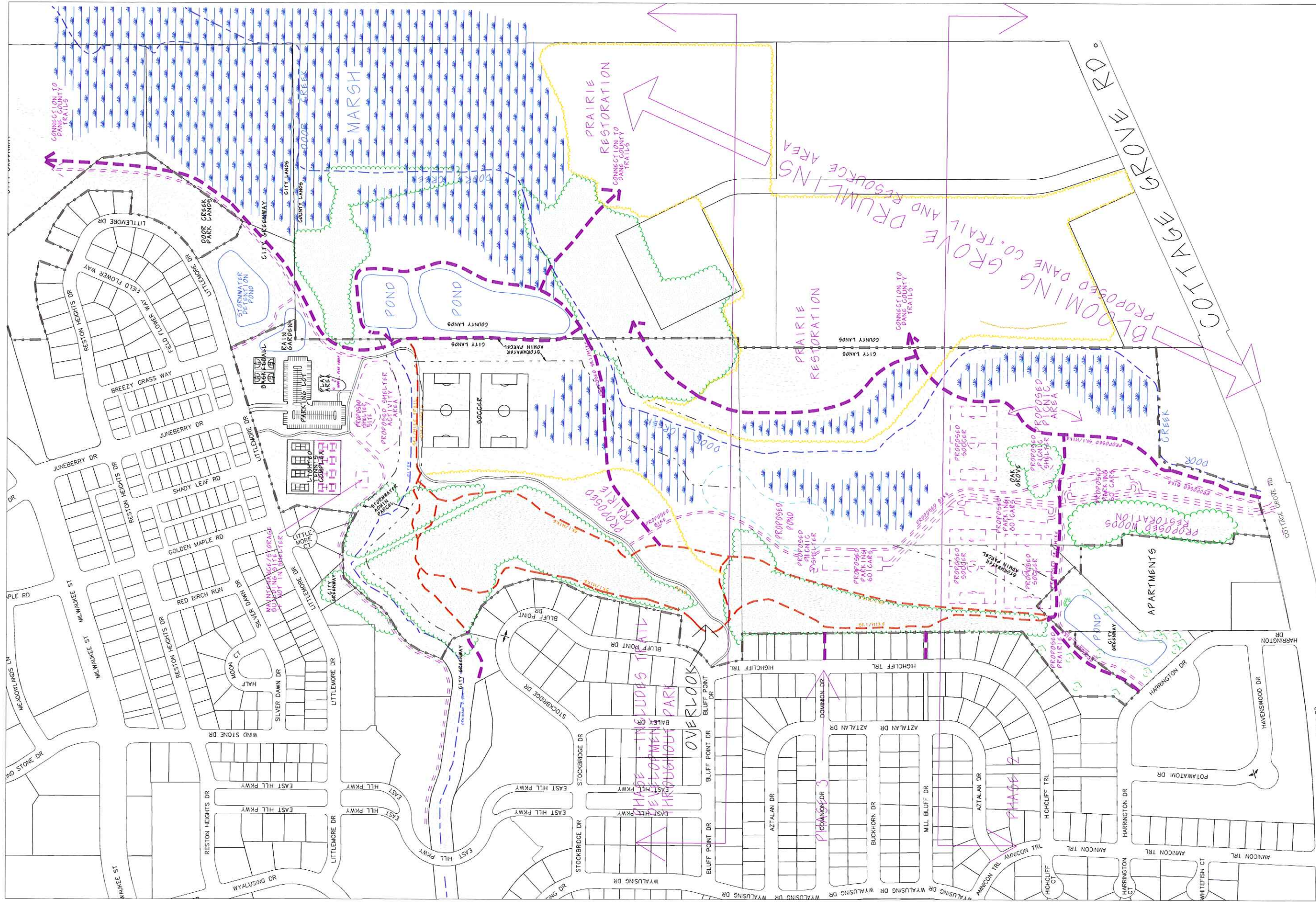
Session: C:\GTViewer_Sessions\Bill.gts

Note: Garner Park

City of Madison, WI - GIS/Mapping data

Printed By: pawab

Disclaimer: The City makes no representation about the accuracy of these records and shall not be liable for any damages



City of Madison
 Department of Public Works
PARKS DIVISION
 City-County Building, Suite 104
 210 Martin Luther King Jr. Blvd.
 PO Box 2987 Madison WI 53701
 www.cityofmadison.com

LEGEND (and see map notes)
 General - Existing
 General - Planned
 Ski Trail - Existing
 Ski Trail - Planned
 Hiking Trail - Existing
 Hiking Trail - Planned
 Stream/Ditch - Existing
 Stream/Ditch - Planned

Woods - Existing
 Woods - Planned
 Prairie/Low Mow - Existing
 Prairie/Low Mow - Planned
 Contours - Existing
 Contours - Planned
 Property Line - Existing
 Property Line - Planned

ACTION
 Park Comm. approval

DATE
 03-12-2008

MASTER PLAN for
DOOR CREEK PARK
 7035 Littlemore Dr 6901 Bluff Point Dr
 851 Harrington Dr 3274 County Hwy 88
 Madison WI 53718

SHEET NUMBER: 1 of 1

Graphical Scale
 0 200 400ft