

**FIXED ROUTE**  
**Operating Statistics For Periods Ending 7/31/2007 & 7/31/2008**

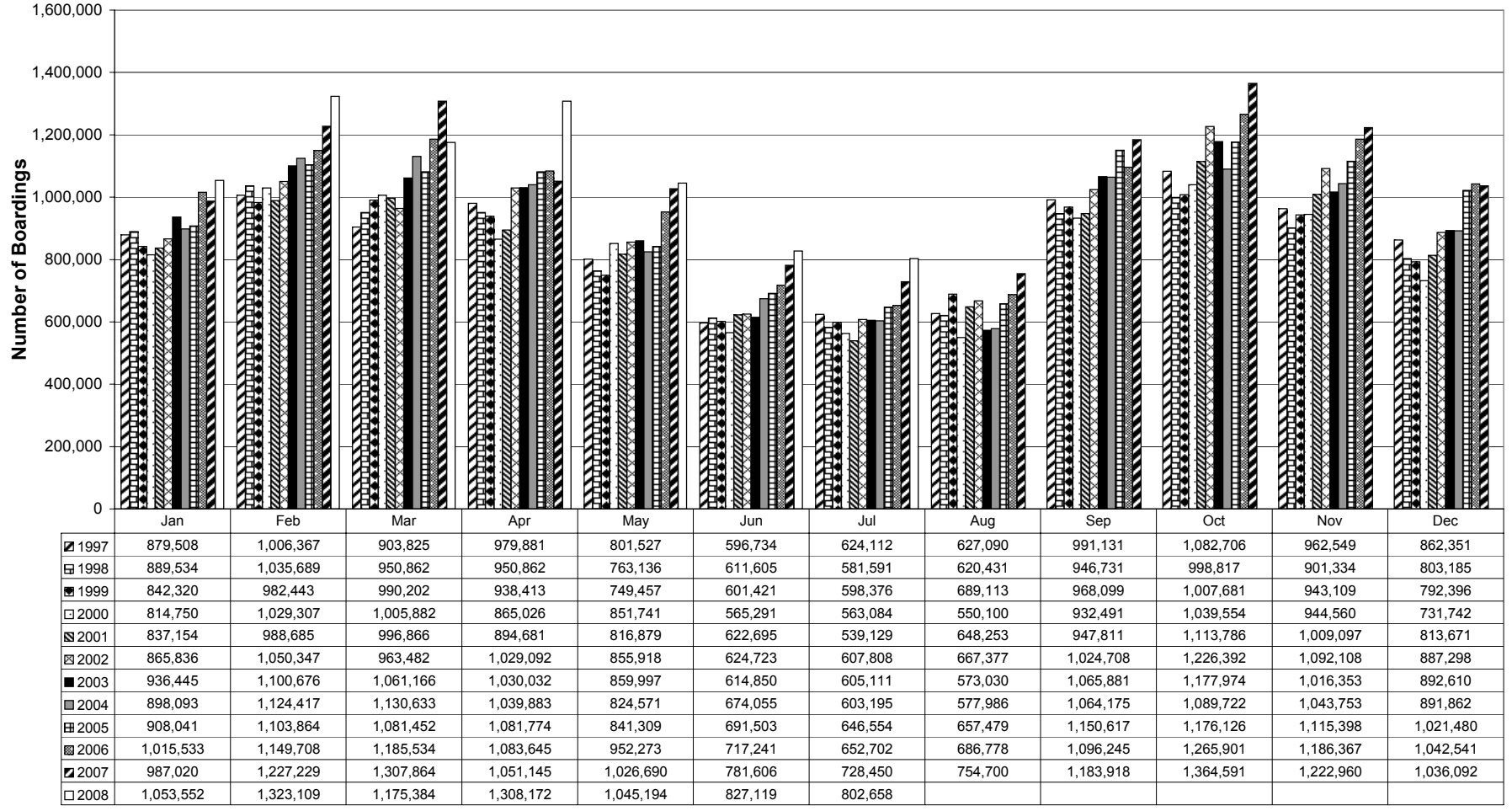
CURRENT MONTH			YEAR TO DATE			
Actual 2007	Actual 2008	Variance 2007 to 2008		Actual 2007	Actual 2008	Variance 2006 to 2007
			<b>Service Supplied</b>			
395,468	<b>416,401</b>	20,933	Total (Vehicle) Miles *	3,141,764	<b>3,167,642</b>	25,878
27,751	<b>28,541</b>	790	Revenue Hours	212,635	<b>212,766</b>	131
29,689	<b>30,548</b>	859	Total (Vehicle) Hours *	235,294	<b>236,010</b>	717
			<i>Ridership</i>			
618,439	<b>680,652</b>	<b>62,213</b>	Revenue Passengers **	6,444,162	<b>6,816,065</b>	<b>371,903</b>
95,445	<b>103,080</b>	<b>7,635</b>	Transfers	583,494	<b>618,050</b>	<b>34,556</b>
<u>14,566</u>	<u><b>18,926</b></u>	<u><b>4,360</b></u>	Non-Revenue Rides	<u>82,348</u>	<u><b>101,073</b></u>	<b>18,725</b>
728,450	<b>802,658</b>	74,208	Total Passengers	7,110,004	<b>7,535,188</b>	425,184
			<b>Service Quality</b>			
3,424	<b>3,338</b>	(86)	Trips using Lifts	19,665	<b>18,558</b>	(1,107)
6	<b>11</b>	5	Passenger Accidents	67	<b>78</b>	11
19	<b>13</b>	(6)	Vehicle Accidents	138	<b>177</b>	39
			<b>Fleet/Maintenance</b>			
79	<b>117</b>	38	Road Calls	511	<b>676</b>	165
66	<b>69</b>	3	Actual Inspections	525	<b>528</b>	3
66	<b>69</b>	3	Scheduled Inspections	524	<b>528</b>	4

Note: NA means the information was not available at the time of this report. YTD would also be incorrect.

\*\* Includes special events.

Key:            A (negative variance) denotes a decrease in activity over 2007.
---

## Fixed Route Monthly Ridership Comparison 1997 - 2008



1997
  1998
  1999
  2000
  2001
  2002
  2003
  2004
  2005
  2006
  2007
  2008

Year	Annual Ridership
1997	10,370,107
1998	10,097,867
1999	10,110,441
2000	10,065,495
2001	10,210,834
2002	10,895,089
2003	10,934,125
2004	10,962,345
2005	11,475,597
2006	12,034,468
2007	12,672,265

**ROUTE PRODUCTIVITY COMPARISON--YEAR TO DATE--July 2008 vs. July 2007**  
(Routes sorted in order of 2008 passengers per revenue hour productivity)

ROUTES	RIDERSHIP, 2008 vs. 2007 Year to Date			Productivity, Trips per Revenue Hour				ROUTES KEY
	2008	2007	% Change	2008	2007	% Change	Routes < 60% of system avg.	
80 UW CAMPUS (Schedule changed September 2, 2007)	883,462	966,546	-8.6%	82.31	83.90	-1.9%		
85 UW CAMPUS-PARK ST CIRCULATOR	182,017	176,491	3.1%	75.89	69.37	9.4%		
90-93 SUPPLEMENTARY SCHOOL SERVICE	594,134	535,492	11.0%	70.80	65.08	8.8%		
81-82 UW LATE NITE CIRCULATORS	134,807	154,225	-12.6%	53.66	54.29	-1.2%		
22 MENDOTA LOOP & 28 NTP-WTP COMMUTER	338,323	313,511	7.9%	47.56	45.21	5.2%		
2 WTP-NTP	625,042	578,984	8.0%	42.35	38.60	9.7%		
50 WTP-SCHROEDER-RAYMOND LOOP	97,949	78,416	24.9%	41.53	33.19	25.1%		
4 NTP-STP	426,858	433,156	-1.5%	38.26	38.88	-1.6%		
40 STP - ARBOR HILLS LOOP	101,151	79,616	27.0%	35.15	27.76	26.6%		
29 SHERMAN COMMUTER	21,702	22,333	-2.8%	33.99	34.89	-2.6%		
6 CITY VIEW DR-WTP & 67 WTP-WEST TOWNE	775,190	732,687	5.8%	33.51	31.69	5.7%		
72 MIDDLETON-CAPITOL SQUARE VIA BRANCH COMMUTER	72,013	54,538	32.0%	32.68	31.20	4.7%		
37 & 38 PFLAUM RD-SHEBOYGAN AVE COMMUTER	220,536	205,888	7.1%	32.23	30.24	6.6%		
71 MIDDLETON-CAPITOL SQUARE VIA MARSHALL PARK COMMUTER	50,923	53,174	-4.2%	31.09	31.21	-0.4%		
3 WTP-ETP	324,779	300,525	8.1%	31.02	28.95	7.2%		
16 STP - ETP	212,196	160,301	32.4%	30.16	22.84	32.1%		
SPECIAL EVENT SERVICE	14,106	14,225	-0.8%	30.07	18.30	64.3%		
44 & 48 STP-UW CAMPUS & FITCHBURG COMMUTER RTES	65,861	55,256	19.2%	30.05	24.63	22.0%		
5 ETP-STP, 13 STP-CAP SQUARE & 18 STP-WTP	600,232	539,391	11.3%	29.81	26.93	10.7%		
1 CAP SQUARE - UW	17,862	14,445	23.7%	29.77	26.38	12.9%		
56 & 57 PILGRIM-REETZ COMMUTER & MUIR FIELD COMMUTER	134,465	136,442	-1.4%	29.63	30.11	-1.6%		
14 & 15 RICHMOND HILL-WEXFORD RIDGE/JUNCTION RIDGE	449,866	410,360	9.6%	29.09	26.98	7.8%		
21 LAKEVIEW LOOP	82,964	87,726	-5.4%	27.60	29.53	-6.5%		
9 ETP - UW CAMPUS & 33 HIESTAND LOOP	74,628	66,267	12.6%	27.03	24.52	10.2%		
52 WTP-FITCHBURG (began operating Sept. 4, 2007)	38,751	NA	NA	24.76	NA	NA		
58 GREENTREE COMMUTER	43,522	43,134	0.9%	24.57	25.00	-1.7%		
11 & 12 WTP-DUTCH MILL-CAP SQUARE	71,166	60,366	17.9%	23.64	19.80	19.4%		
17 ETP-NTP, 20 NTP-EAST TOWNE & 30 ETP-EAST TOWNE	289,858	259,257	11.8%	23.43	21.03	11.4%		
51 WTP-MUIR FIELD LOOP	33,672	36,601	-8.0%	23.15	25.17	-8.0%		
47 ARBOR HILLS COMMUTER	45,415	34,717	30.8%	23.06	17.87	29.1%		
27 NTP - UW CAMPUS COMMUTER	25,983	22,490	15.5%	22.15	18.16	22.0%		
19 RED ARROW TR-CAP SQUARE	100,345	100,858	-0.5%	21.98	21.44	2.5%		
70 MIDDLETON-CAPITOL SQUARE	83,799	88,576	-5.4%	21.79	22.46	-3.0%		
25 AMERICAN CENTER	6,543	6,022	8.7%	19.85	18.99	4.5%	X	
55 VERONA- WTP COMMUTER (began Sept. 19, 2005)	17,087	10,883	57.0%	19.81	13.08	51.4%	X	
32 ACEWOOD-THOMPSON LOOP	23,501	20,165	16.5%	19.28	16.47	17.1%	X	
7 WTP-ETP (Weekends & Holidays Only)	64,221	63,134	1.7%	19.03	18.16	4.8%	X	
8 CAP SQUARE-SPRING HARBOR (Weekends & Holidays Only)	16,007	14,534	10.1%	17.15	15.10	13.6%	X	
73 WTP-OLD SAUK TRAILS (began 8/27/06; started serving Middleton 9/4/07)	79,981	87,034	-8.1%	16.73	27.23	-38.5%	X	
34 ETP-MATC & 39 ETP - DAIRY DRIVE	25,321	20,767	21.9%	16.09	13.25	21.5%	X	
63 & 68 WTP-PRAIRIE TWN CTR (Weekends & Holidays only)	29,826	28,910	3.2%	15.45	14.52	6.4%	X	
74 MIDDLETON LOOP	14,934	4,744	214.8%	15.27	5.34	185.8%	X	
24 AIRPORT LOOP	23,667	18,761	26.1%	14.56	11.75	24.0%	X	
UNKNOWN ROUTE & ROAD BUS **	522	685	-23.8%	NA	NA	NA		
<b>ROUTES DISCONTINUED DURING 2007:</b>								
53 UW HOSP COMMUTER (service reduced 8/27/06-discontinued 8/31/07)	NA	17,056	NA	NA	16.58	NA		
89 PARKING RAMP SHUTTLE (operated January 2 - June 15, 2007)	NA	1,316	NA	NA	1.01	NA		
<b>SYSTEM TOTAL</b>	<b>7,535,188</b>	<b>7,110,004</b>	<b>6.0%</b>	<b>35.42</b>	<b>33.44</b>	<b>5.9%</b>	<b>21.25</b>	
<b>TOTAL WITHOUT CAMPUS CIRCULATORS (Routes 80-85)</b>	<b>6,334,902</b>	<b>5,812,742</b>	<b>9.0%</b>	<b>32.14</b>	<b>29.70</b>	<b>8.2%</b>	<b>19.28</b>	

**Core Routes** operate every day, from early a.m. to late p.m.: **2, 3, 4, 5, 6, 7, 13** (3 operates weekdays only; 7 operates wkends & holidays only).

**Commuter Routes** operate on weekdays during peak hours: **11, 12, 14, 15, 25, 27, 28, 29, 37, 38, 44, 47, 48, 55, 56, 57, 58, 71, 72, 74**

**Peripheral Routes** operate from transfer points to outlying areas: **20, 21, 22, 24, 30, 32, 33, 40, 50, 51, 52, 73**

**Connector Routes** connect transfer points throughout the day: **16, 17, 18.**

**Circulator Routes** operate midday only: **1, 9, 34**

**Other routes:**  
**8** operates between the Capitol Square and Spring Harbor, weekends only.  
**19** operates like a core route between the Capitol Square and Allied Drive on weekdays.  
**39** operates as a commuter route during peak hours; operates like a circulator route midday.  
**67** connects with route 6 at the West Transfer Point; operates to/from West Towne Mall.  
**63 and 68** operate between the West Transfer Point and Prairie Town Center on weekends.  
**70** operates like a core route between the Capitol Square, Middleton & the West Transfer Point on weekdays.

**UW Campus Circulators**  
**80, 81, 82, 85**

**School Day Supplemental Routes**  
**90, 91, 92, 93**

NOTE: Substantial changes were made across the system effective September 2, 2007. This will affect comparisons of current service to previous.  
\* Unknown Route refers to ridership data that isn't assigned to a route by the farebox (generally seen when farebox goes into "fallback mode").  
Road buses are "extras" put into service to handle overloads.

**ROUTE PERFORMANCE, Year to Date through July 2008**

ROUTE	RIDERSHIP			Passengers/revenue hour	
	2008	2007	% change	2008	2007
1 CAP SQUARE - UW	17,862	14,445	23.7%	29.77	26.38
2 WTP-NTP	625,042	578,984	8.0%	42.35	38.60
3 WTP-ETP	324,779	300,525	8.1%	31.02	28.95
4 NTP-STP	426,858	433,156	-1.5%	38.26	38.88
5 ETP-STP, 13 STP-CAP SQUARE & 18 STP-WTP	600,232	539,391	11.3%	29.81	26.93
6 CITY VIEW DR-WTP & 67 WTP-WEST TOWNE	775,190	732,687	5.8%	33.51	31.69
7 WTP-ETP (Weekends & Holidays Only)	64,221	63,134	1.7%	19.03	18.16
8 CAP SQUARE-SPRING HARBOR (Weekends & Holidays Only)	16,007	14,534	10.1%	17.15	15.10
9 ETP - UW CAMPUS & 33 HIESTAND LOOP	74,628	66,267	12.6%	27.03	24.52
11 & 12 WTP-DUTCH MILL-CAP SQUARE	71,166	60,366	17.9%	23.64	19.80
14 & 15 RICHMOND HILL-WEXFORD RIDGE/JUNCTION RIDGE	449,866	410,360	9.6%	29.09	26.98
16 STP - ETP	212,196	160,301	32.4%	30.16	22.84
17 ETP-NTP, 20 NTP-EAST TOWNE & 30 ETP-EAST TOWNE	289,858	259,257	11.8%	23.43	21.03
19 RED ARROW TR-CAP SQUARE	100,345	100,858	-0.5%	21.98	21.44
21 LAKEVIEW LOOP	82,964	87,726	-5.4%	27.60	29.53
22 MENDOTA LOOP & 28 NTP-WTP COMMUTER	338,323	313,511	7.9%	47.56	45.21
24 AIRPORT LOOP	23,667	18,761	26.1%	14.56	11.75
25 AMERICAN CENTER	6,543	6,022	8.7%	19.85	18.99
27 NTP - UW CAMPUS COMMUTER	25,983	22,490	15.5%	22.15	18.16
29 SHERMAN COMMUTER	21,702	22,333	-2.8%	33.99	34.89
32 ACEWOOD-THOMPSON LOOP	23,501	20,165	16.5%	19.28	16.47
34 ETP-MATC & 39 ETP - DAIRY DRIVE	25,321	20,767	21.9%	16.09	13.25
37 & 38 PFLAUM RD-SHEBOYGAN AVE COMMUTER	220,536	205,888	7.1%	32.23	30.24
40 STP - ARBOR HILLS LOOP	101,151	79,616	27.0%	35.15	27.76
44 & 48 STP-UW CAMPUS & FITCHBURG COMMUTER RTES	65,861	55,256	19.2%	30.05	24.63
47 ARBOR HILLS COMMUTER	45,415	34,717	30.8%	23.06	17.87
50 WTP-SCHROEDER-RAYMOND LOOP	97,949	78,416	24.9%	41.53	33.19
51 WTP-MUIR FIELD LOOP	33,672	36,601	-8.0%	23.15	25.17
52 WTP-FITCHBURG (began operating Sept. 4, 2007)	38,751	NA	NA	24.76	NA
53 UW HOSP COMMUTER (service reduced 8/27/06-discontinued 8/31/07)	NA	17,056	NA	NA	16.58
55 VERONA- WTP COMMUTER (began Sept. 19, 2005)	17,087	10,883	57.0%	19.81	13.08
56 & 57 PILGRIM-REETZ COMMUTER & MUIR FIELD COMMUTER	134,465	136,442	-1.4%	29.63	30.11
58 GREENTREE COMMUTER	43,522	43,134	0.9%	24.57	25.00
70 MIDDLETON-CAPITOL SQUARE	83,799	88,576	-5.4%	21.79	22.46
71 MIDDLETON-CAPITOL SQUARE VIA MARSHALL PARK COMMUTER	50,923	53,174	-4.2%	31.09	31.21
72 MIDDLETON-CAPITOL SQUARE VIA BRANCH COMMUTER	72,013	54,538	32.0%	32.68	31.20
73 WTP-OLD SAUK TRAILS (began 8/27/06; started serving Middleton 9/4/07)	79,981	87,034	-8.1%	16.73	27.23
74 MIDDLETON LOOP	14,934	4,744	214.8%	15.27	5.34
<b>MIDDLETON ROUTES TOTAL</b>	<b>301,650</b>	<b>288,066</b>	<b>4.7%</b>	<b>22.44</b>	<b>25.09</b>
63 & 68 WTP-PRAIRIE TWN CTR (Weekends & Holidays only)	29,826	28,910	3.2%	15.45	14.52
89 PARKING RAMP SHUTTLE (operated January 2 - June 15, 2007)	NA	1,316	NA	NA	1.01
90-93 SUPPLEMENTARY SCHOOL SERVICE	594,134	535,492	11.0%	70.80	65.08
80 UW CAMPUS (Schedule changed September 2, 2007)	883,462	966,546	-8.6%	82.31	83.90
81-82 UW LATE NITE CIRCULATORS	134,807	154,225	-12.6%	53.66	54.29
85 UW CAMPUS-PARK ST CIRCULATOR	182,017	176,491	3.1%	75.89	69.37
SPECIAL EVENT SERVICE	14,106	14,225	-0.8%	30.07	18.30
UNKNOWN ROUTE & ROAD BUS **	522	685	-23.8%	NA	NA
<b>SYSTEM TOTAL</b>	<b>7,535,188</b>	<b>7,110,004</b>	<b>6.0%</b>	<b>35.42</b>	<b>33.44</b>
<b>TOTAL WITHOUT CAMPUS CIRCULATORS (Routes 80-85)</b>	<b>6,334,902</b>	<b>5,812,742</b>	<b>9.0%</b>	<b>32.14</b>	<b>29.70</b>

NOTE: Substantial changes were made across the system effective September 2, 2007. This will affect comparisons of current service to previous.

\* Unknown Route refers to ridership data that isn't assigned to a route by the farebox (generally seen when farebox goes into "fallback mode").

Road buses are "extras" put into service to handle overloads.

**Paratransit Performance Indicators  
July, 2008**

<u>Revenue Indicators</u>	Metro Plus YTD		Fixed Route YTD	
	July. 2007	July. 2008	July. 2007	July. 2008
Operating Revenue/ Operating Cost	NA	Financial	23.4%	Financial
Passenger Revenue/ Total Passenger Trips	\$1.05	info	\$0.67	info
		not available		not available
		for July		for July
		2008	\$3.00	2008

<u>Expense Indicators</u>	Metro Plus			
	July. 2007	July. 2008	YTD July, 2007	YTD July, 2008
Operating Cost/Passenger Trip	\$27.58		\$3.00	

<u>Operations</u>	Metro Plus			
	July. 2007	July. 2008	YTD July, 2007	YTD July, 2008
Total Trips	19,958	21,934	153,847	155,648
Rides Cancelled	3,290	3,560	25,542	27,639
Cancellation Rate	16.5%	16.2%	16.6%	17.8%
No Shows	480	497	3,072	3,522
No Shows/Rides Provided	2.4%	2.3%	2.0%	2.3%
Number of Clients Provided Service	1,080	1,089	1,591	1,539
Average Trips/Client	18.5	20.1	96.7	101.1
DDS Trips	11,596	12,888	87,369	90,286
Subscription Trips	10,920	12,789	84,041	88,333
DDS Subscription Trips	7,073	8,487	53,798	57,247
D2D Trips	14,298	16,216	111,294	113,311
Lv Attended Trips	5,508	5,811	40,335	41,824
Maintenance Inspections Conducted/Scheduled	101.6%	100.0%	101.6%	101.3%

<u>Number of Trips by Provider YTD</u>	Metro Direct	Laidlaw	Badger	Trans. Sol.	Badger Bus	Total
Ambulatory	16,498	13,194	36,405	23,053	17,829	106,979
Non-Ambulatory	18,353	16,542	-	1,356	12,418	48,669
Percentage	22.39%	19.10%	23.39%	15.68%	19.43%	100.00%

<u>Customer Service YTD</u>	Metro Direct	Laidlaw	Badger	Transit Sol	Badger Bus	Total
Rides Provided	34,851	29,736	36,405	24,409	30,247	155,648
Customer Complaints	66	53	90	39	15	263
Customer Compliments	4	0	2	0	0	6
Customer Suggestions	3	0	2	0	2	7
Complaints/1000 passenger trips	1.89	1.78	2.47	1.60	0.50	1.69
Late Service Reports (2)	37	191	649	104	32	1,013
Late Service Reports/1000 passenger trips	1.06	6.42	17.83	4.26	1.06	6.51

<u>On-Time Performance, July. 2008</u>	Metro Direct	Laidlaw	Badger	Transit Sol.	Badger Bus
	89%	94%	96%	94%	96%

<u>ADA Certifications, July 2008</u>	Clients	1-19 Trips	>20 - 40<	<40 Trips/mo	TTL Trips
Category 1	1,253	262	187	138	14,371
Category 2	44	1	0	0	2
Category 2/3	96	17	2	0	166
Category 3	2,021	375	117	35	7,436
<b>Total</b>	<b>3,414</b>				<b>21,975</b>

Monthly New Certification	28
Monthly Denied Applications	3

(1) Passenger Revenue does not include Group Access revenue.

(2) Late Service Reports are based on passenger feedback. Not all late reports are chargeable to the vendor.

**NOTE: Reported expenses do not include depreciation, debt principal, or fixed assets.**

**ParaTransit**  
**Operating Statistics For Periods Ending 7/31/2007 & 7/31/2008**

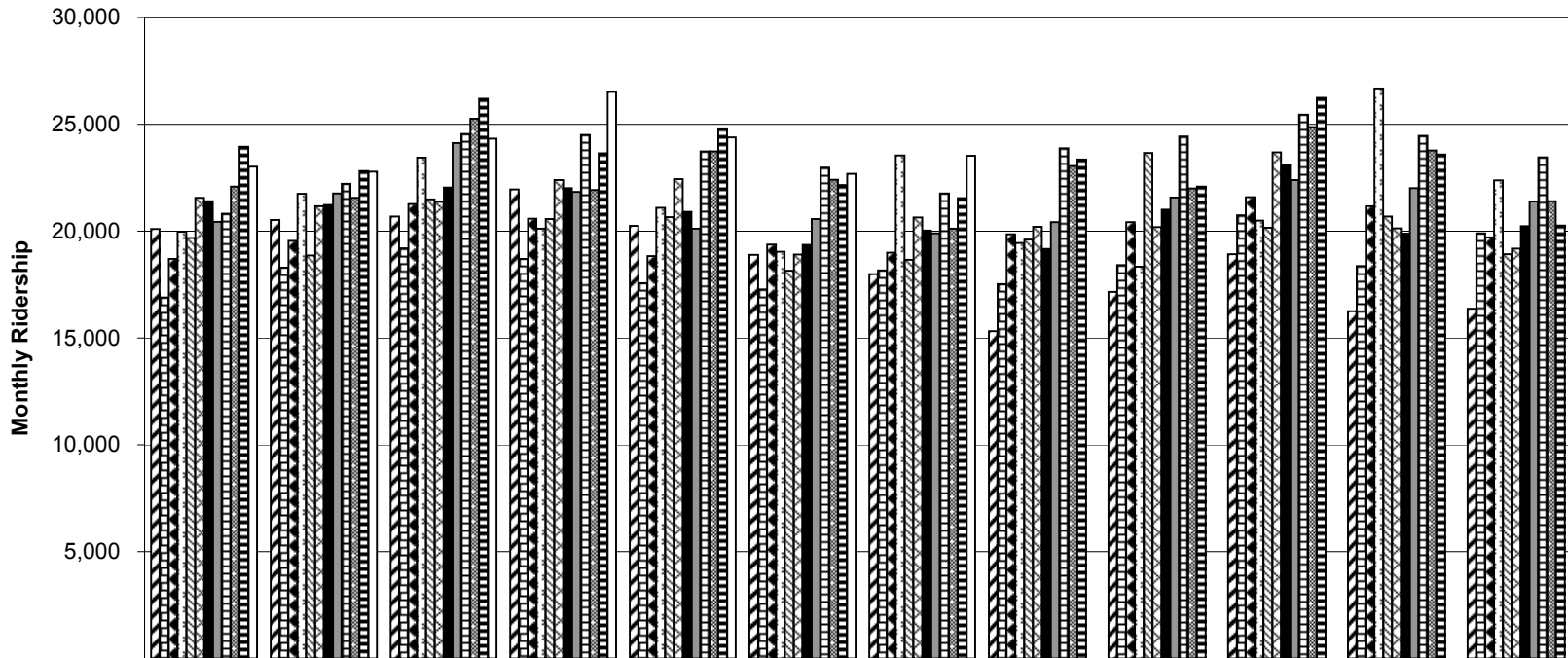
CURRENT MONTH				YEAR TO DATE		
Actual 2007	Actual 2008	Variance 2007 to 2008		Actual 2007	Actual 2008	Variance 2007 to 2008
			<b>Service Supplied Data</b>			
1,080	<b>1,089</b>	9	No. of Clients riding the System	1,591	<b>1,539</b>	(52)
			<i>Ridership</i>			
3,904	<b>5,257</b>	1,353	Directly Operated Service	30,503	<b>34,851</b>	4,348
<u>16,054</u>	<u><b>16,677</b></u>	623	ADA Contracted Services	<u>123,344</u>	<u><b>120,797</b></u>	(2,547)
19,958	<b>21,934</b>	1,976	Total ADA Ridership *	153,847	<b>155,648</b>	1,801
1,591	<b>1,596</b>	5	Group Access *	11,233	<b>11,587</b>	354
480	<b>497</b>	17	Total No-shows	3,072	<b>3,522</b>	450
			<b>Service Quality Data</b>			
3	<b>1</b>	(2)	Passenger Accidents	19	<b>13</b>	(6)
2	<b>2</b>	0	Vehicle Accidents	8	<b>16</b>	8
			<b>Fleet/Maintenance Data</b>			
2	<b>6</b>	4	Road Calls	11	<b>17</b>	6
9	<b>12</b>	3	Actual Inspections	65	<b>79</b>	14
9	<b>12</b>	3	Scheduled Inspections	64	<b>78</b>	14

Note: N/A means the information was not available at the time of this report. The YTD would also be incorrect as it only reflects the information that was available from previous months.

\* ADA Ridership does not include Group Access. **GAS ridership estimated for July, 2008.**

**Key:** A (negative variance) denotes a decrease in activity over 2007.

### Monthly Paratransit Ridership, 1997 - 2008 (includes Group Access)



	Jan	Feb	Mar	Apr	May	Jun	Jul	Aug	Sep	Oct	Nov	Dec
1997	20,102	20,518	20,683	21,948	20,247	18,885	17,982	15,323	17,151	18,914	16,250	16,370
1998	16,897	18,293	19,204	18,705	17,571	17,275	18,164	17,526	18,406	20,742	18,367	19,900
1999	18,698	19,550	21,272	20,582	18,839	19,366	18,995	19,847	20,416	21,591	21,173	19,710
2000	19,970	21,748	23,433	20,110	21,097	19,040	23,548	19,447	18,333	20,495	26,681	22,374
2001	19,676	18,866	21,482	20,567	20,649	18,145	18,656	19,606	23,657	20,156	20,689	18,918
2002	21,563	21,173	21,377	22,386	22,436	18,910	20,644	20,208	20,191	23,681	20,126	19,180
2003	21,401	21,223	22,043	22,012	20,902	19,352	20,030	19,175	21,012	23,082	19,881	20,238
2004	20,435	21,770	24,126	21,831	20,117	20,575	19,902	20,429	21,571	22,395	22,009	21,378
2005	20,820	22,210	24,549	24,509	23,734	22,976	21,758	23,872	24,425	25,457	24,465	23,460
2006	22,087	21,553	25,257	21,923	23,725	22,409	20,115	23,047	22,000	24,873	23,779	21,405
2007	23,945	22,814	26,194	23,641	24,806	22,155	21,549	23,353	22,078	26,239	23,590	20,269
2008	23,015	22,787	24,327	26,509	24,386	22,681	23,530					

1997
  1998
  1999
  2000
  2001
  2002
  2003
  2004
  2005
  2006
  2007
  2008

Year	Annual Ridership
1997	224,373
1998	221,050
1999	240,039
2000	256,276
2001	241,067
2002	251,875
2003	250,351
2004	256,538
2005	282,235
2006	272,173
2007	280,633

Note: Annual Ridership includes Group Access.