

THE UNIVERSITY OF WISCONSIN

JOINT CAMPUS AREA COMMITTEE SUBMITTAL

22D5A CAMP RANDALL SPORTS CENTER REPLACEMENT

APRIL 25, 2024



CULLEN

bernersschaber



PROJECT DESCRIPTION

PROJECT COST: \$285,163,000

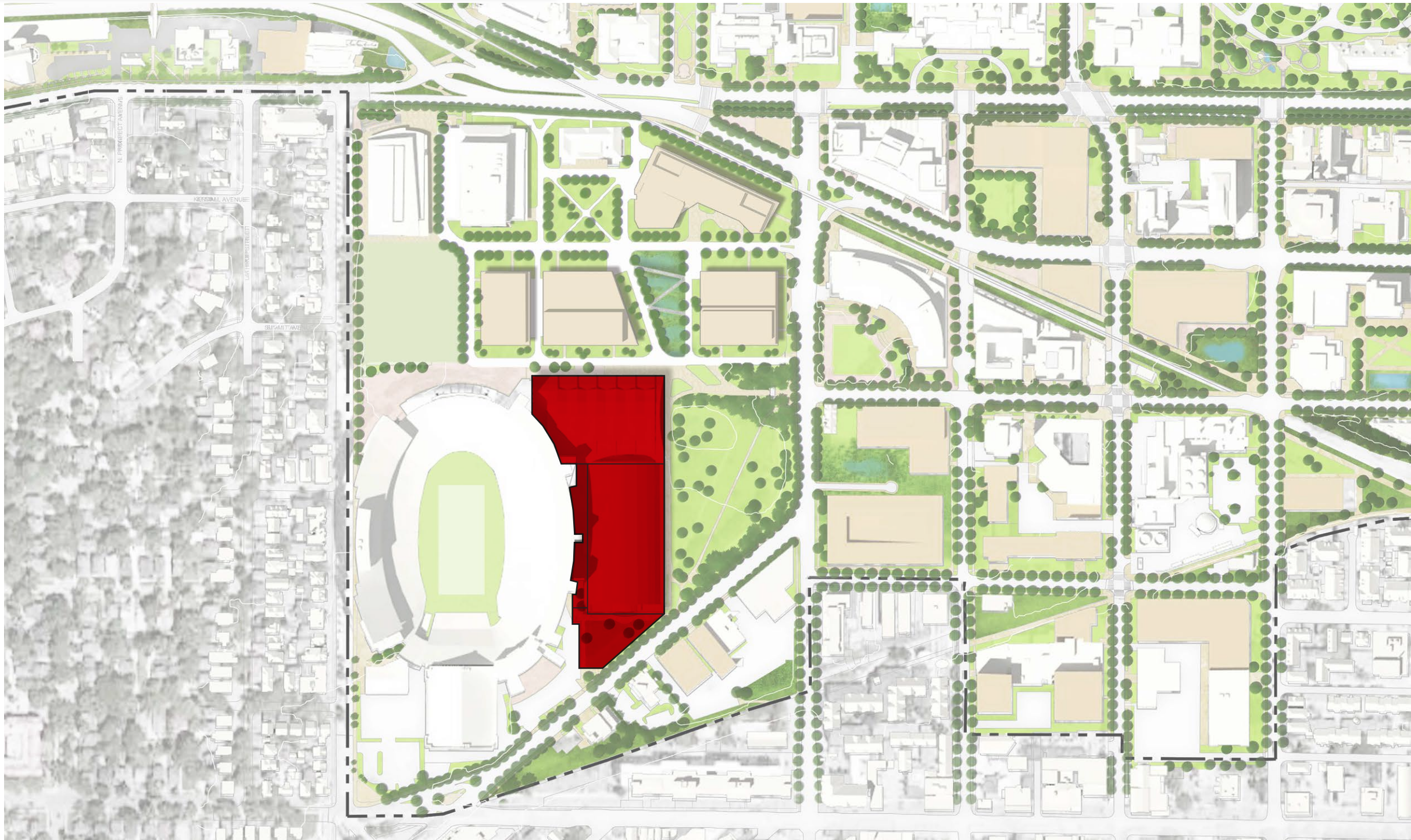
- Construction Costs
- Design and Professional Services
- Contingency
- Furniture, Fixtures, and Equipment

PROJECT SIZE: 480,000 -500,000 GSF

- Footprint: 195,000 GSF

- Replace the existing McClain & Shell buildings with a new athletics training facility & indoor practice field. This facility will be the home of the football, men's & women's soccer, and men's & women's track programs .
- The new facilities helps meet critical space needs for each athletic personnel department in the building.
- Create a way to honor Wisconsin Military Veterans.
- Increase available parking on site for building occupants and public to utilize.
- Designed to promote natural lighting and views to the outdoor.
- Includes opportunities for revenue generation and interaction with the public.
- Enables potential future expansion projects to build vertically.

CAMPUS CONTEXT



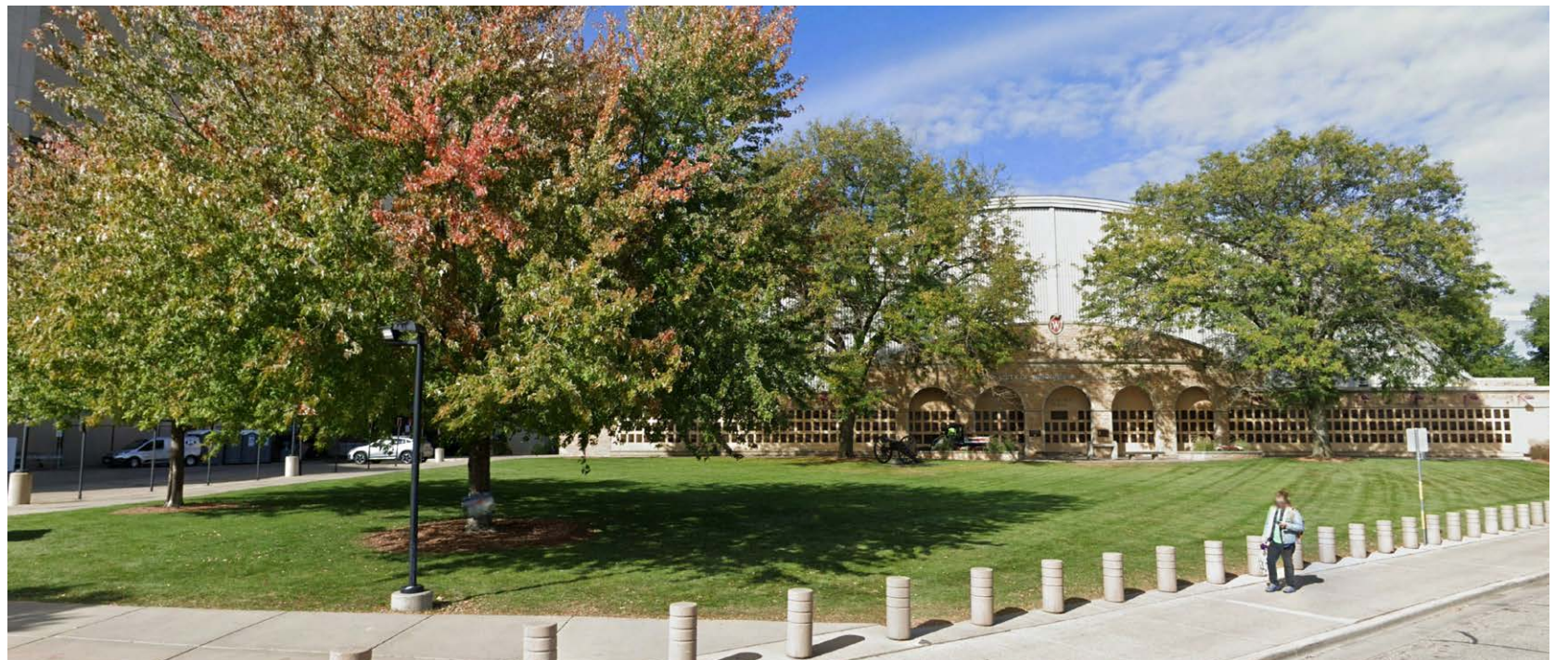
EXISTING PROJECT SITE



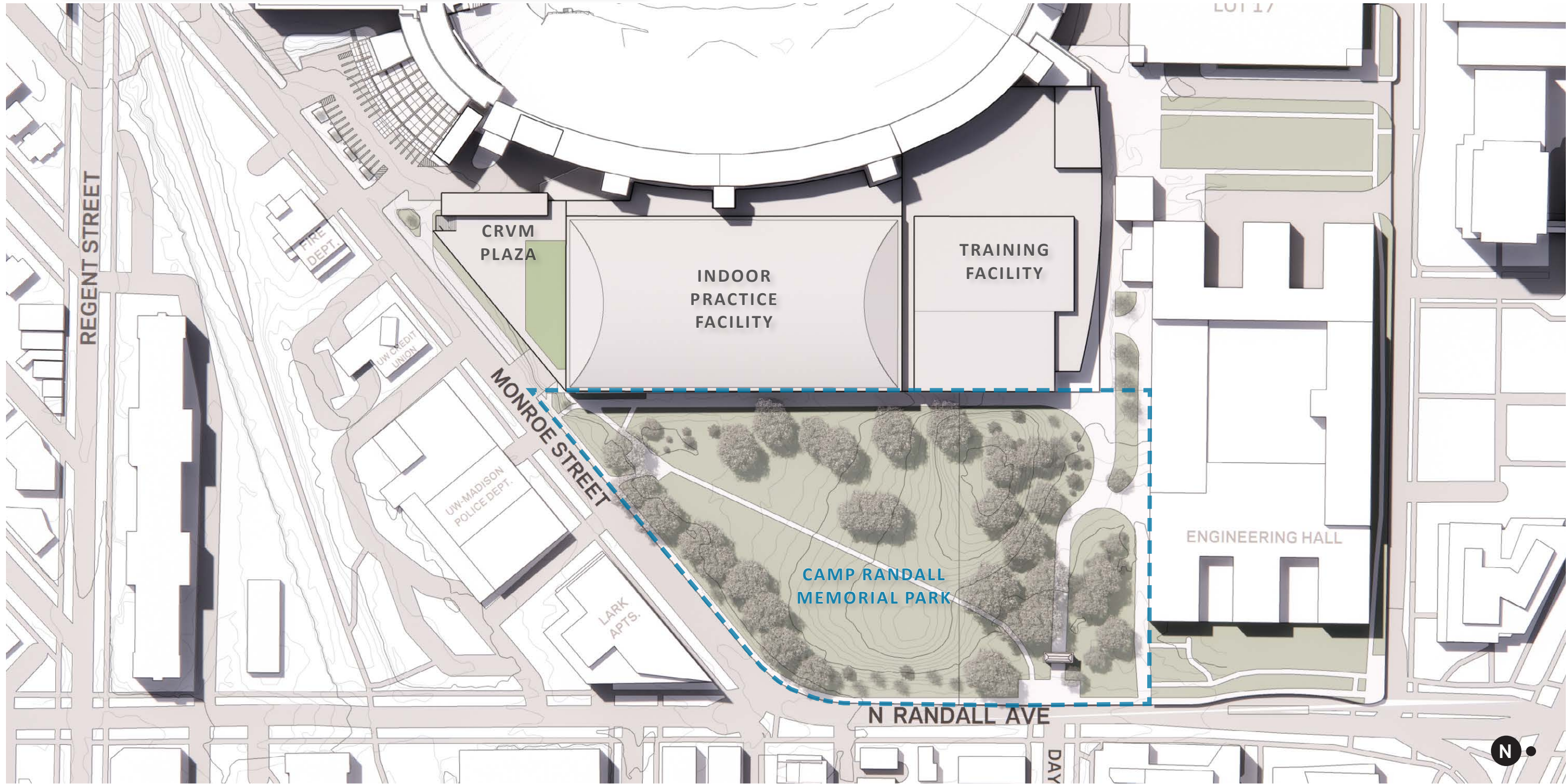
EXISTING PROJECT SITE



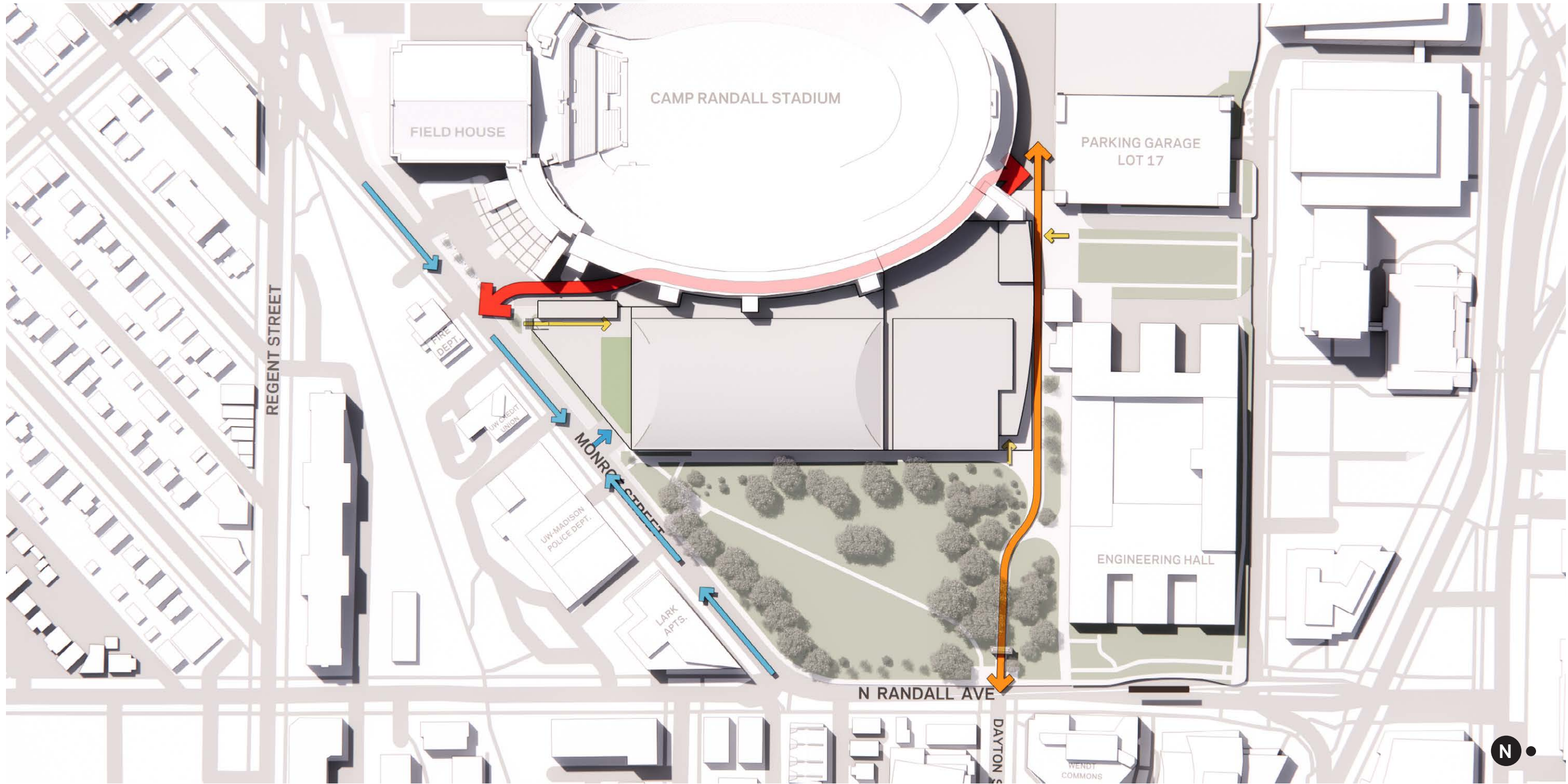
EXISTING PROJECT SITE - TREES



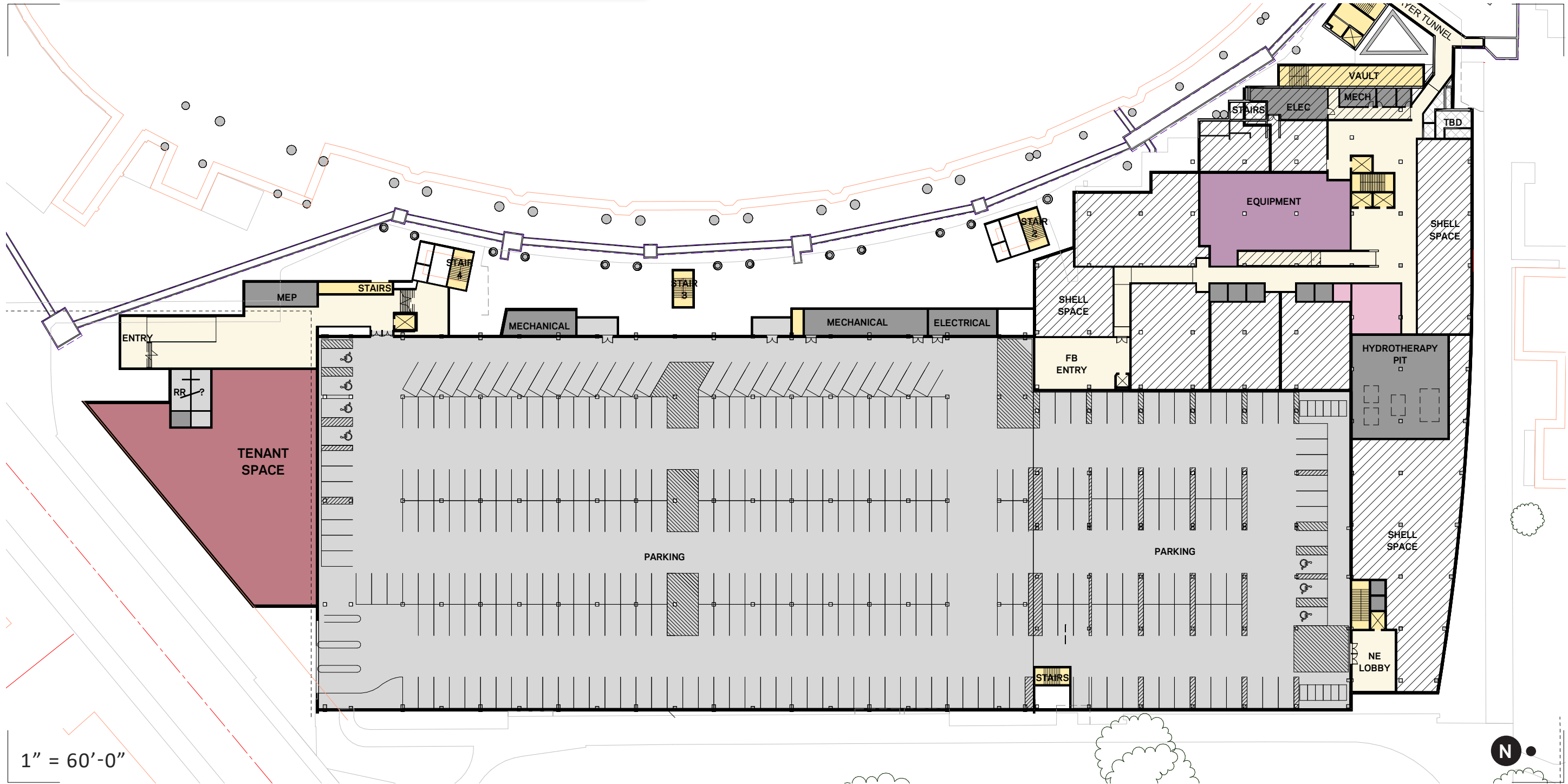
PRELIMINARY SITE PLAN



SITE ACCESS & CIRCULATION



LEVEL 0 - BASEMENT



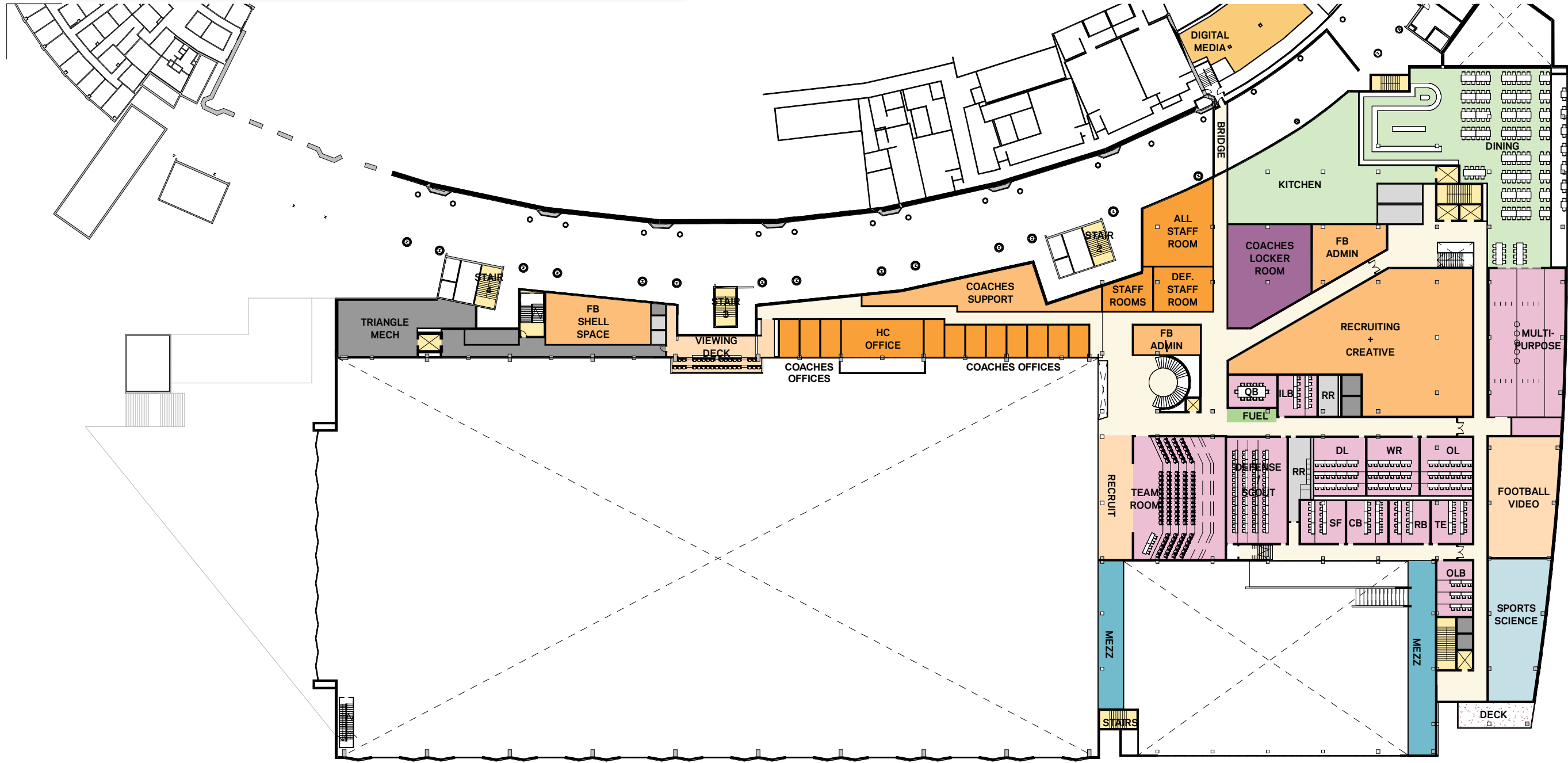
LEVEL 1 - PLAYER LEVEL



1" = 60'-0"



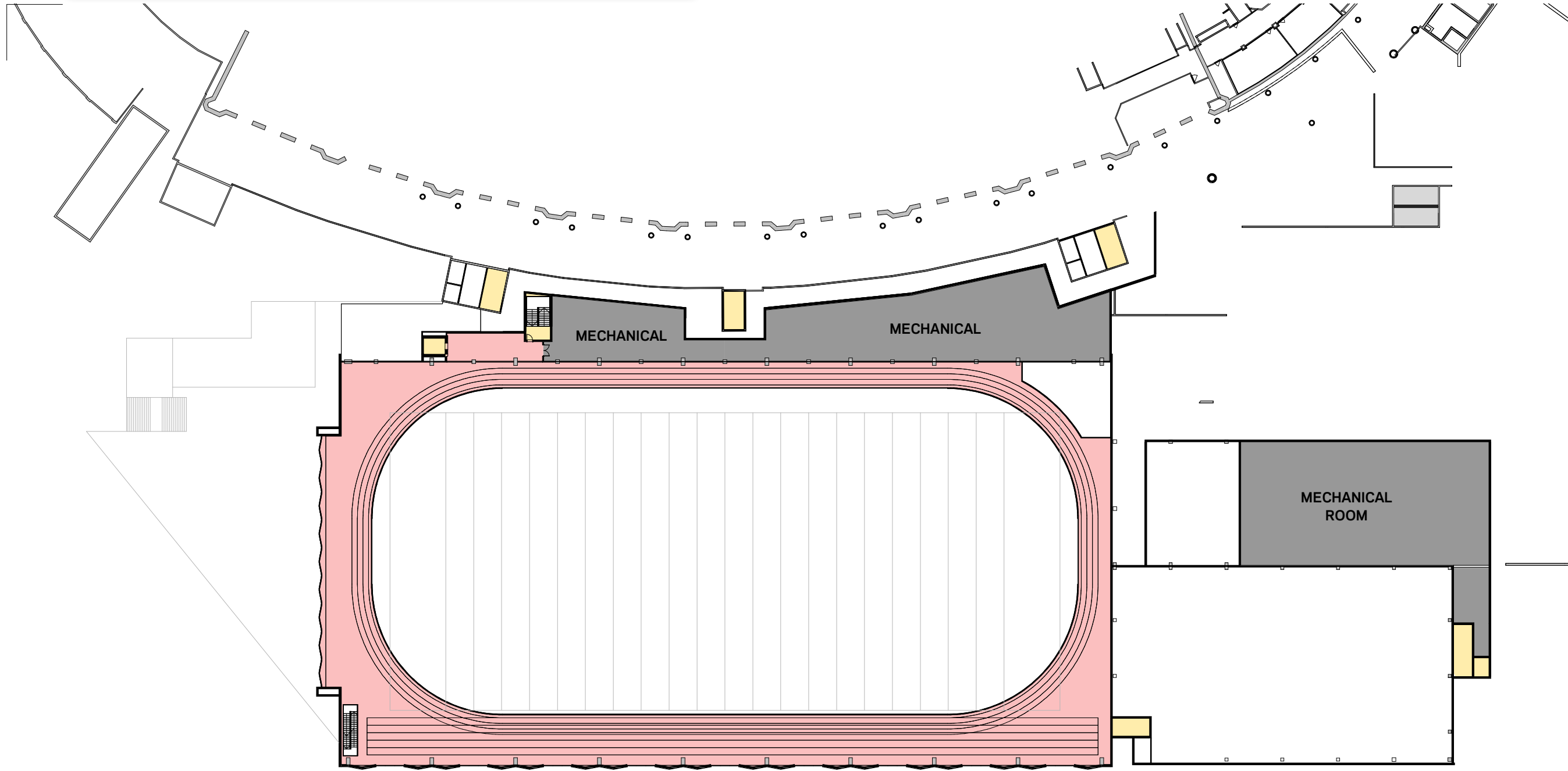
LEVEL 2 - FB STAFF LEVEL



1" = 60'-0"



LEVEL 3 - TRACK MEZZANINE



1" = 60'-0"



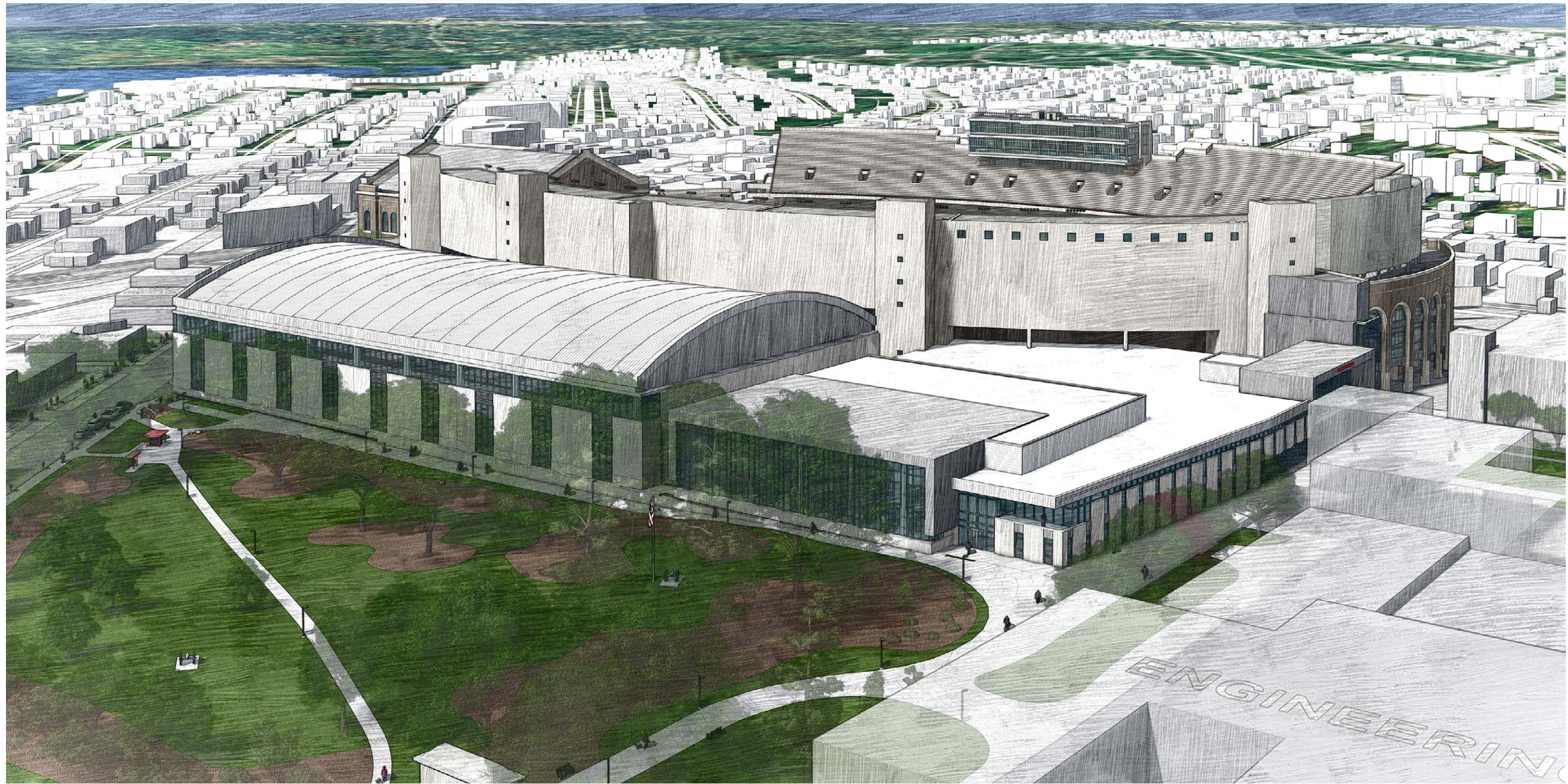
AERIAL SOUTHEAST



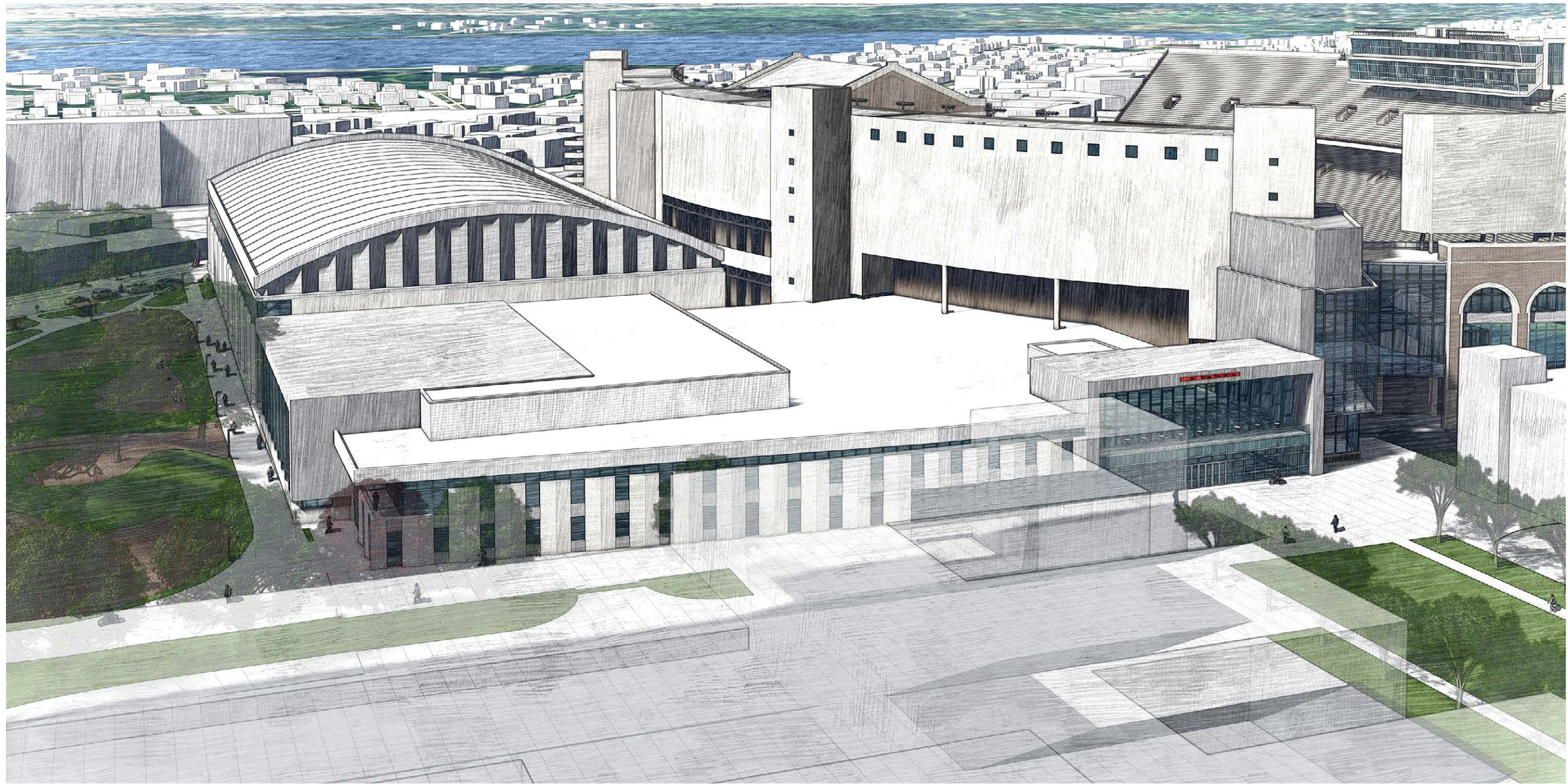
AERIAL EAST



AERIAL NORTHEAST



AERIAL NORTH



MAIN ENTRY FROM GREEN SPACE



NORTHEAST CORNER



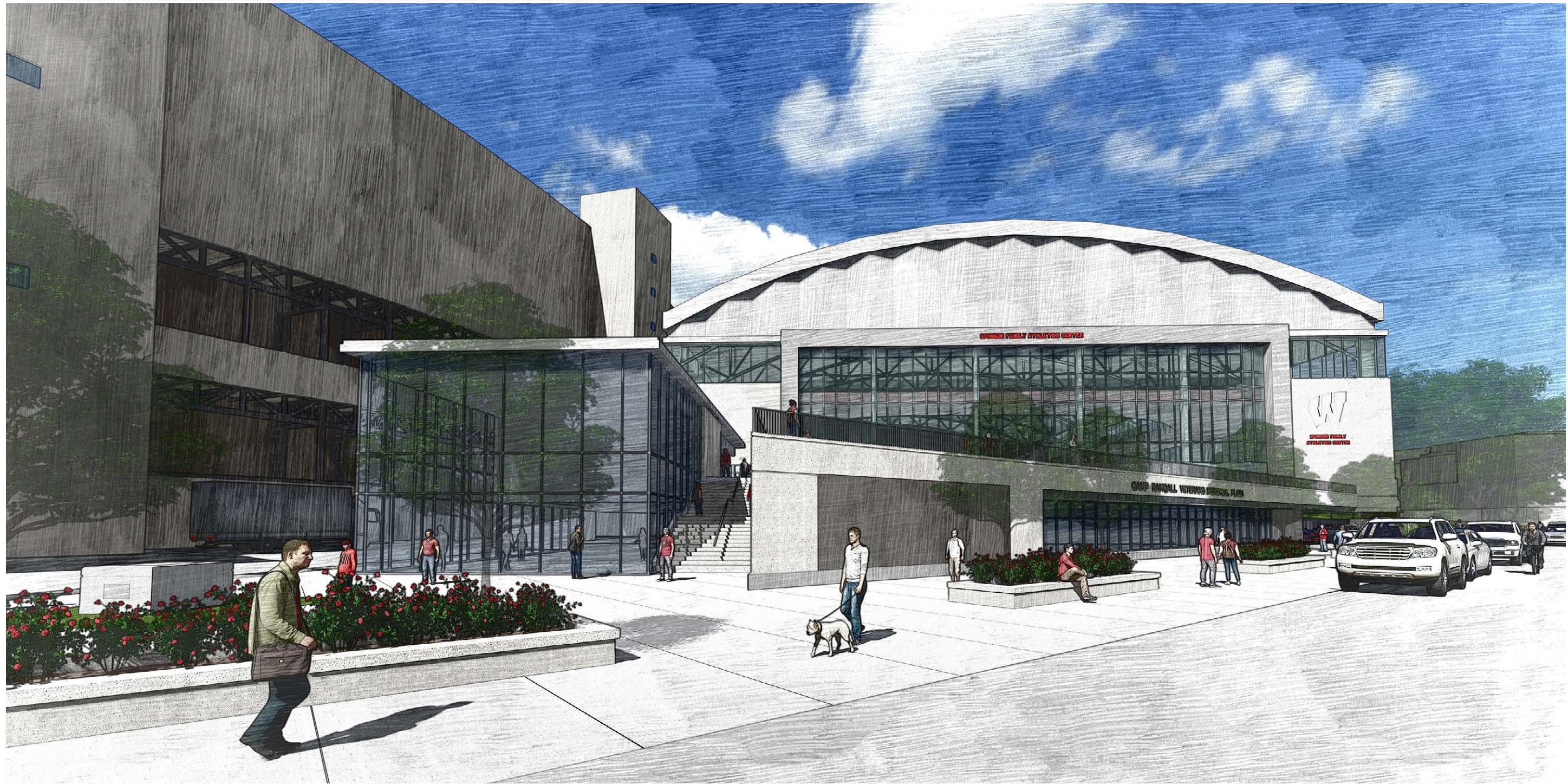
EAST PARK WALKWAY



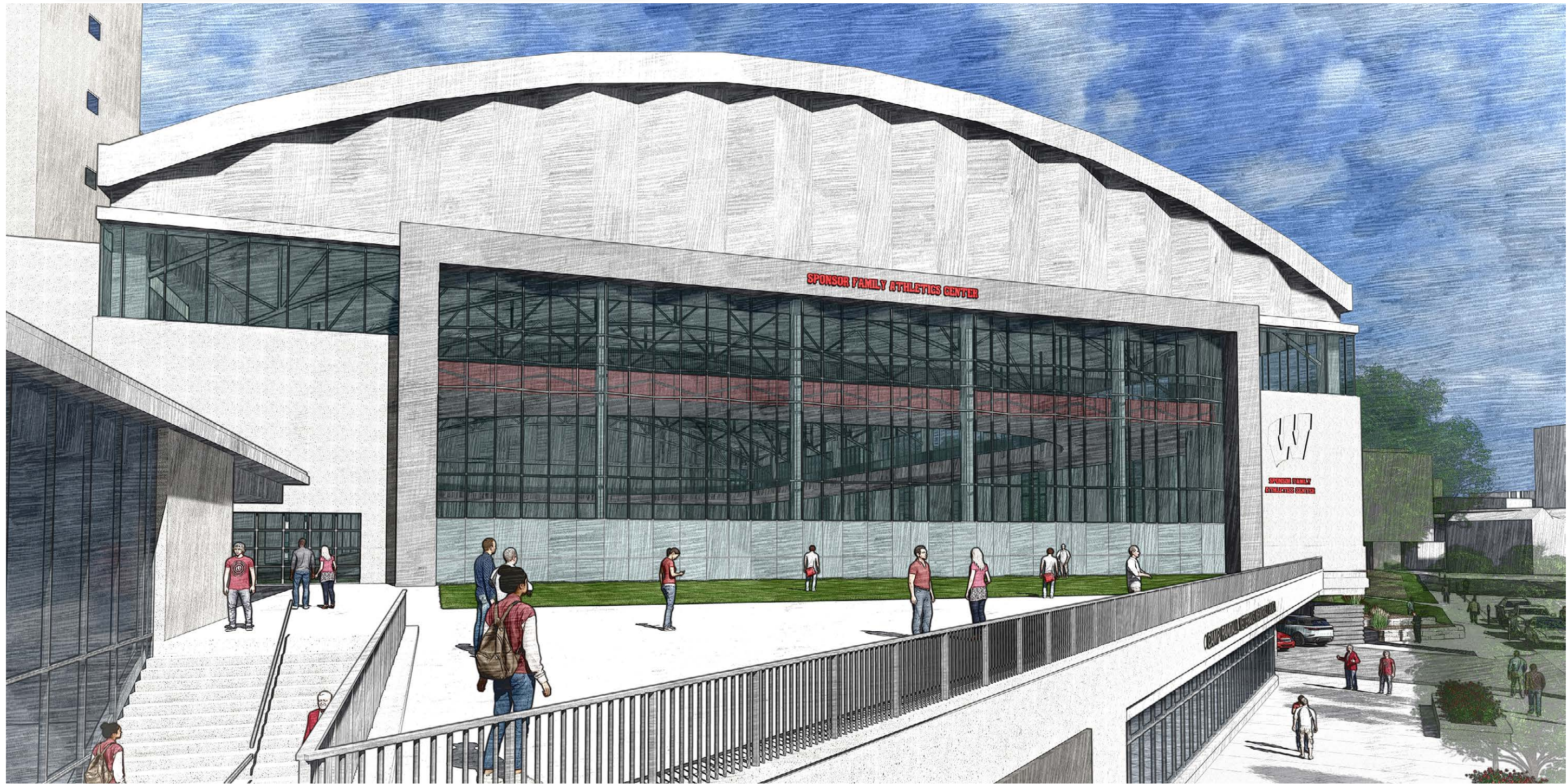
MONROE STREET VIEW



MONROE STREET VIEW



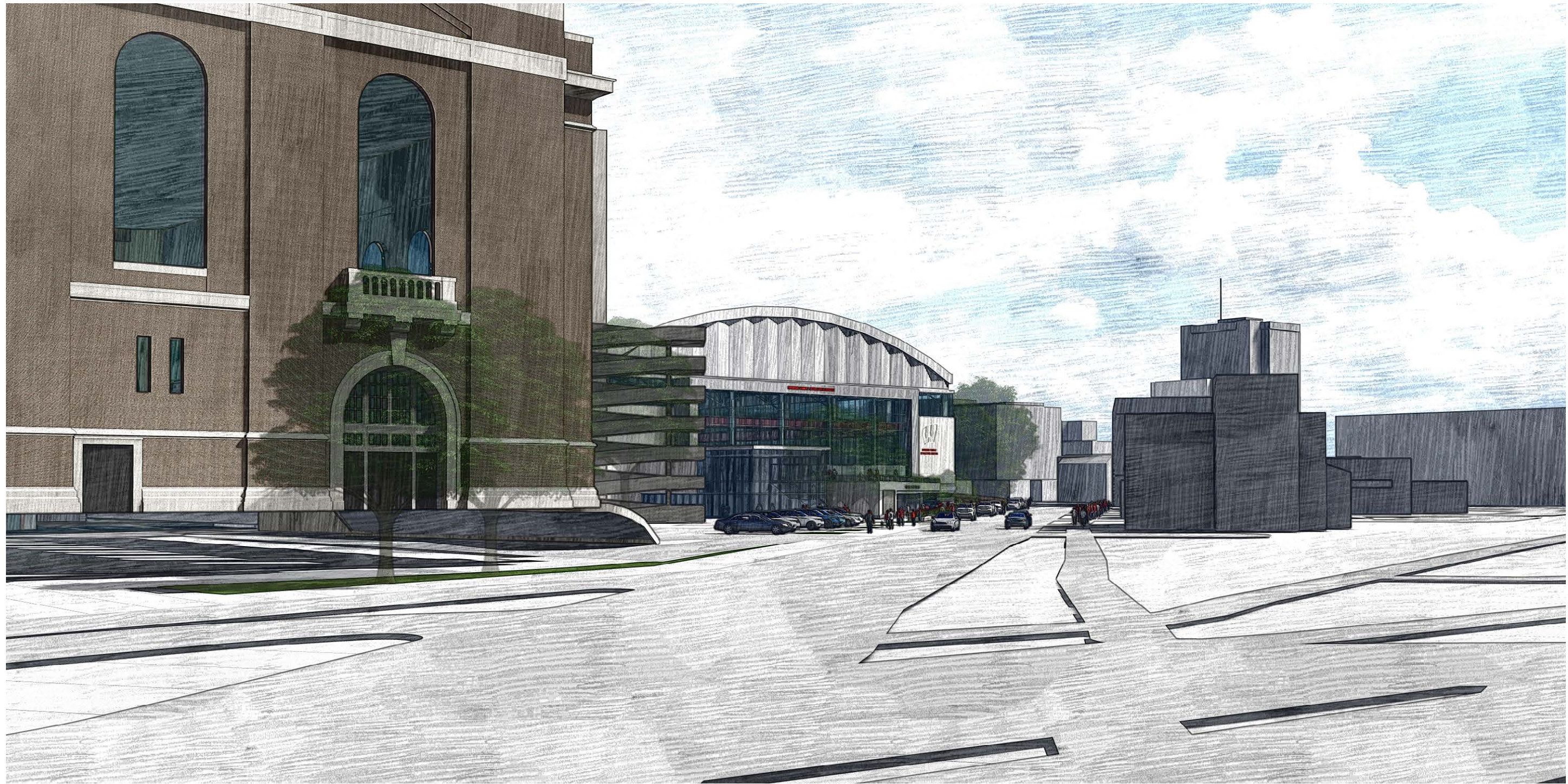
VETERANS PLAZA



STREET VIEW



REGENT ST + MONROE ST INTERSECTION



MONROE STREET SIDEWALK



MONROE STREET SIDEWALK



PHASE 0 - TODAY

PRELIMINARY DATES

START: Now
 END: August 1, 2024

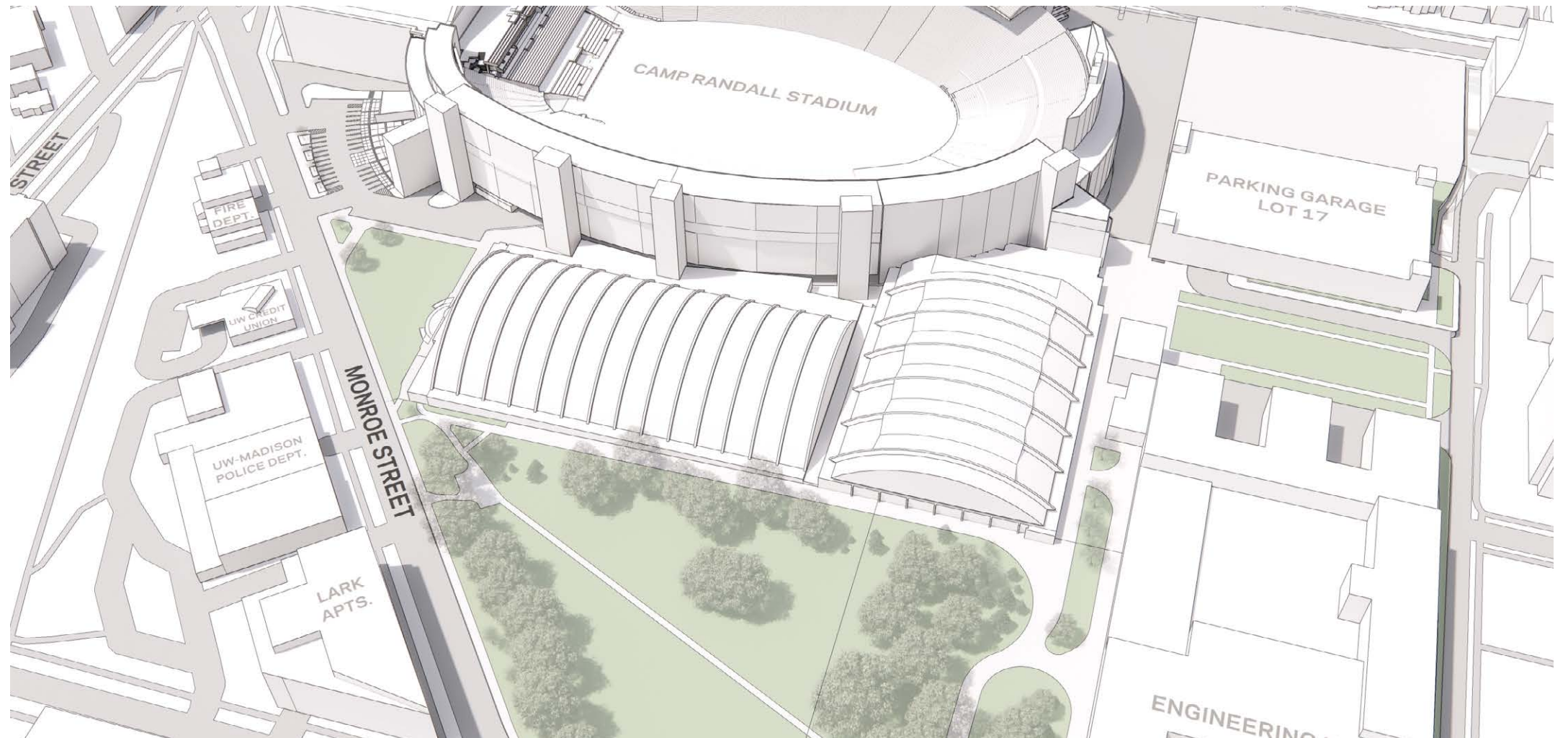
	2024												2025												2026												2027												2028				
	J	F	M	A	M	J	J	A	S	O	N	D	J	F	M	A	M	J	J	A	S	O	N	D	J	F	M	A	M	J	J	A	S	O	N	D	J	F	M	A	M	J	J	A	S	O	N	D	J	F	M		
Shell / IPF																																																					
Triangle																																																					
McClain / TF																																																					
Camp Randall																																																					

SHELL / IPF

TRIANGLE AREA

MCCLAIN / TRAINING FACILITY

CAMP RANDALL SPACES



PHASE 1 - DEMO THE SHELL

PRELIMINARY DATES

START: August 1, 2024

END: November 1, 2024

	2024												2025												2026												2027												2028				
	J	F	M	A	M	J	J	A	S	O	N	D	J	F	M	A	M	J	J	A	S	O	N	D	J	F	M	A	M	J	J	A	S	O	N	D	J	F	M	A	M	J	J	A	S	O	N	D	J	F	M		
Shell / IPF																																																					
Triangle																																																					
McClain / TF																																																					
Camp Randall																																																					

SHELL / IPF

- Demolition of the existing Shell facility.

TRIANGLE AREA

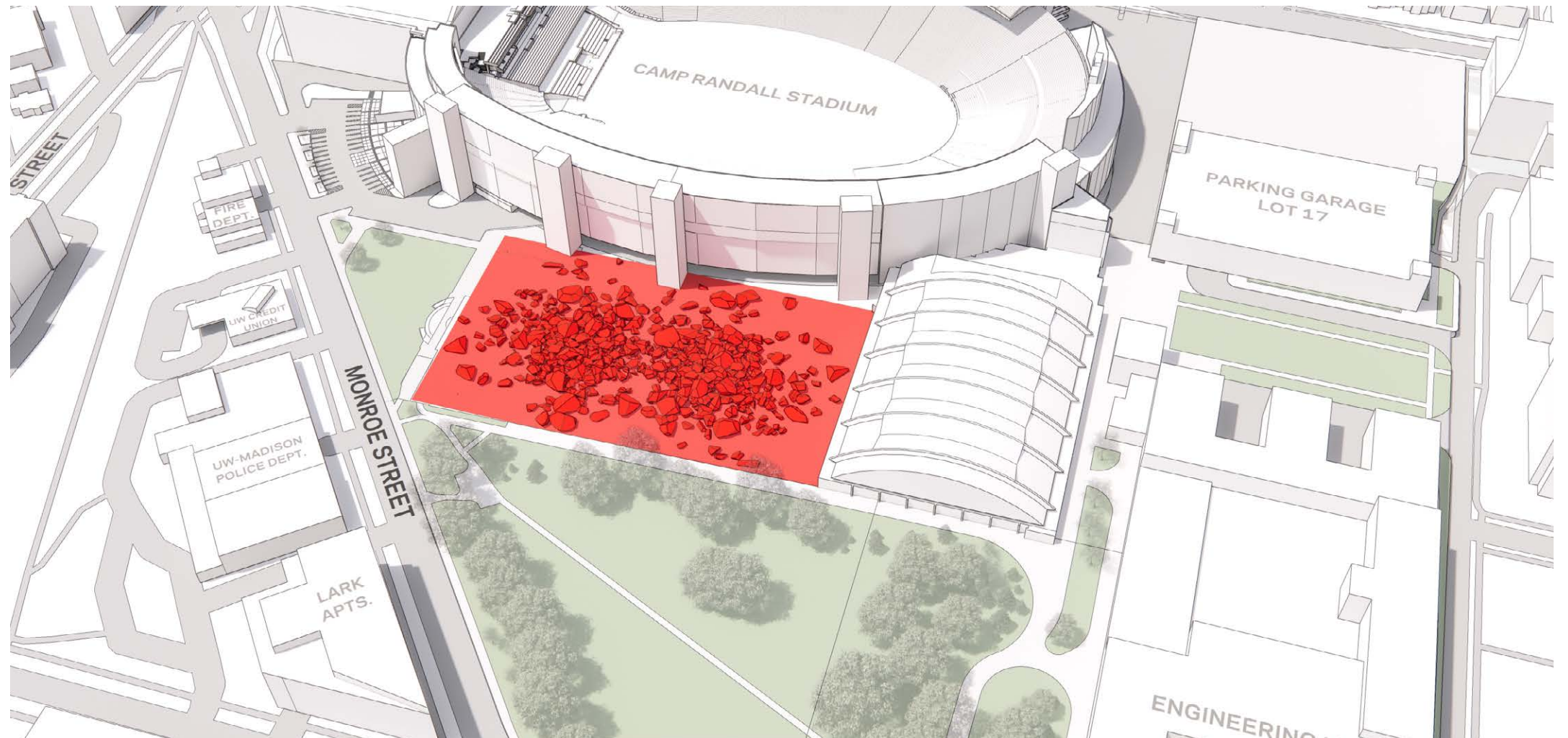
- Utilized for construction access.

MCCLAIN / TRAINING FACILITY

- Still occupied by student-athletes.

CAMP RANDALL SPACES

- Still occupied by staff and student-athletes.



PHASE 2 - CONSTRUCTION OF IPF

PRELIMINARY DATES

START: November 1, 2024

END: March 1, 2026

	2024												2025												2026												2027												2028				
	J	F	M	A	M	J	J	A	S	O	N	D	J	F	M	A	M	J	J	A	S	O	N	D	J	F	M	A	M	J	J	A	S	O	N	D	J	F	M	A	M	J	J	A	S	O	N	D	J	F	M		
Shell / IPF																																																					
Triangle																																																					
McClain / TF																																																					
Camp Randall																																																					

SHELL / IPF

- New IPF Facility and supporting spaces (Bow Tie structure) are being constructed

TRIANGLE AREA

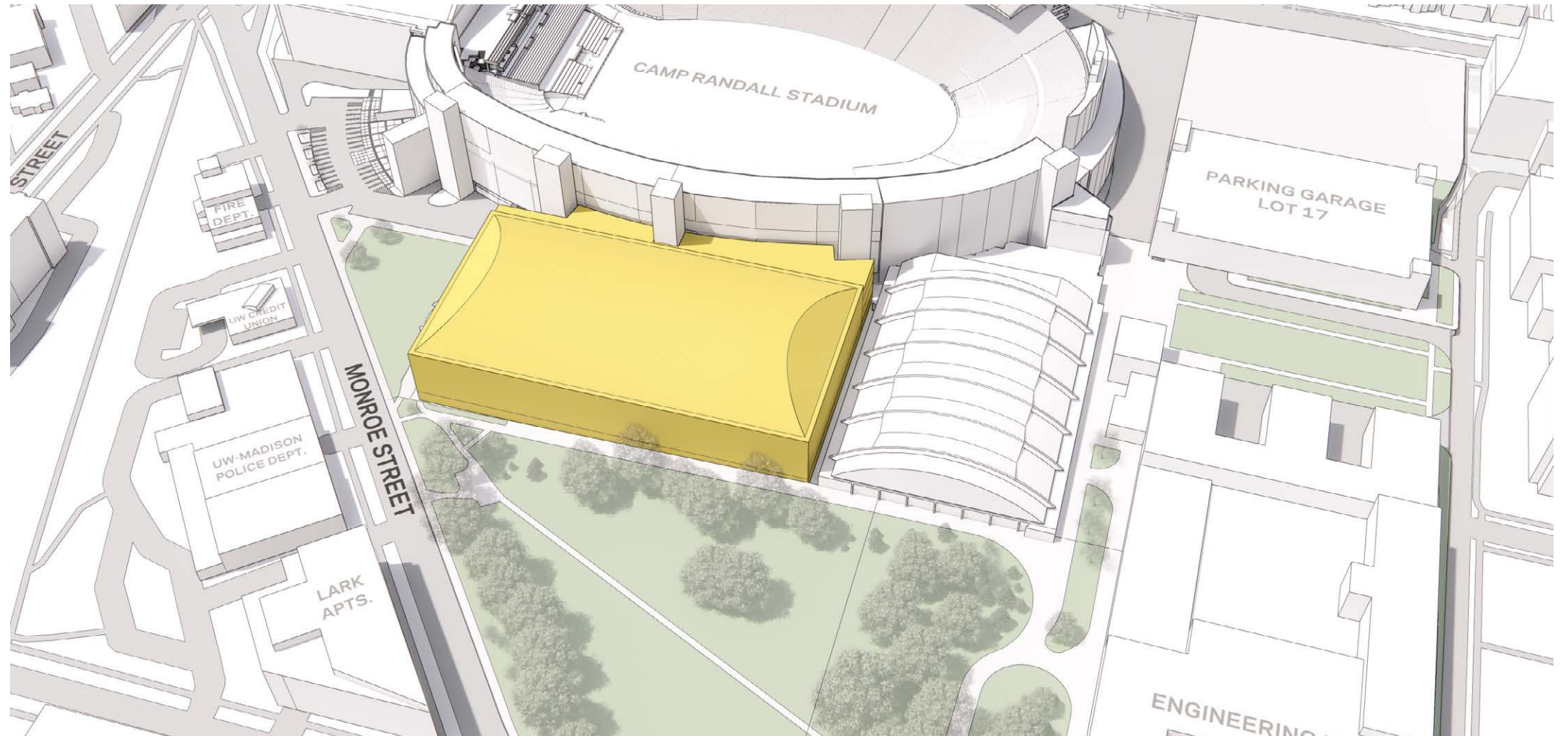
- Utilized for construction access.

MCCLAIN / TRAINING FACILITY

- Still occupied by student-athletes

CAMP RANDALL SPACES

- Still occupied by staff and student-athletes



PHASE 3 - MOVE OUT OF MCCLAIN

PRELIMINARY DATES

START: November 1, 2025

END: February 1, 2026

	2024												2025												2026												2027												2028				
	J	F	M	A	M	J	J	A	S	O	N	D	J	F	M	A	M	J	J	A	S	O	N	D	J	F	M	A	M	J	J	A	S	O	N	D	J	F	M	A	M	J	J	A	S	O	N	D	J	F	M		
Shell / IPF																																																					
Triangle																																																					
McClain / TF																																																					
Camp Randall																																																					

SHELL / IPF

- New IPF Facility and supporting spaces (Bow Tie structure) are near completion.

TRIANGLE AREA

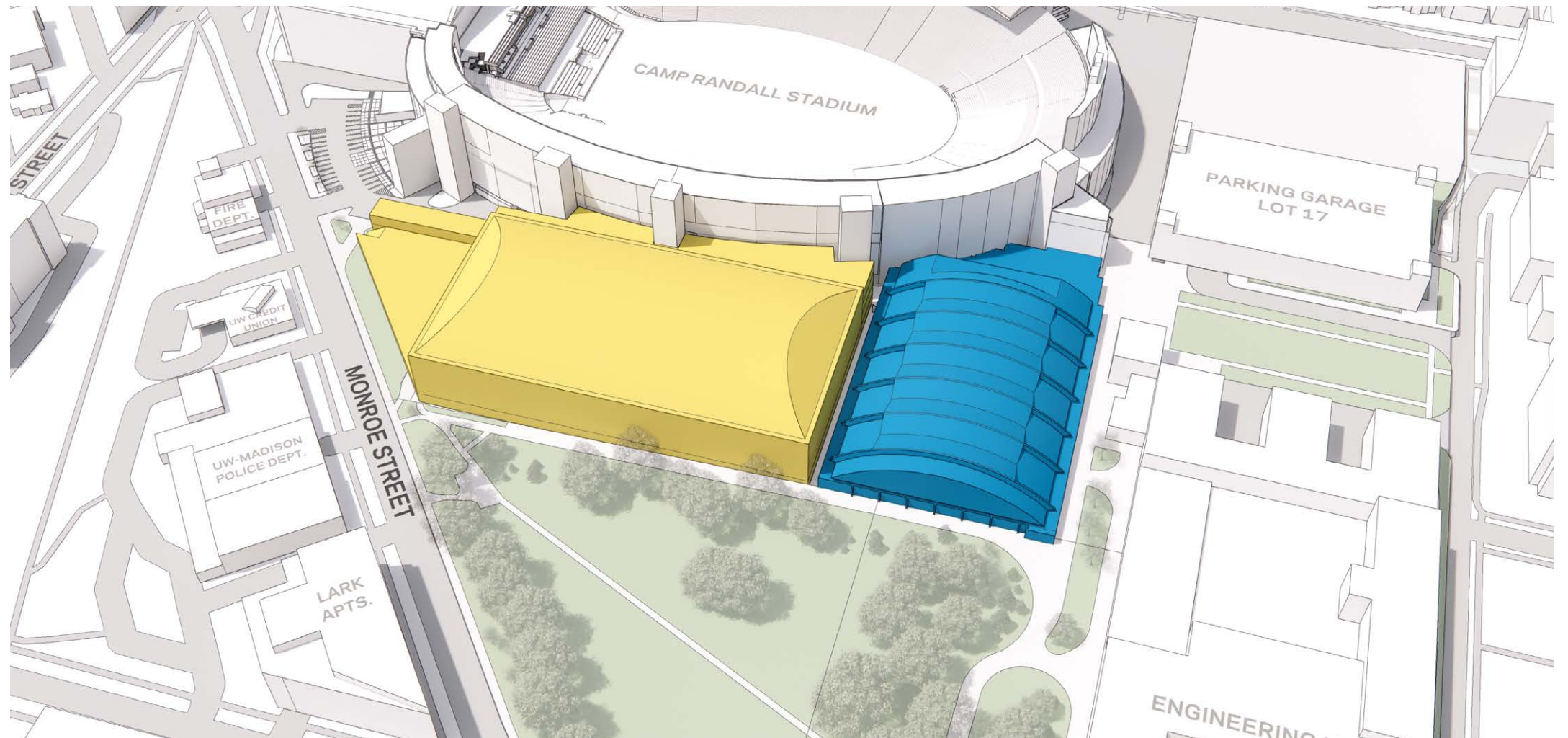
- Construction begins.

MCCLAIN / TRAINING FACILITY

- Internal spaces relocate to temporary spaces.

CAMP RANDALL SPACES

- Still functional for staff and student-athletes. Temporary locations being constructed.



PHASE 4 - DEMOLISH MCCLAIN

PRELIMINARY DATES (TRIANGLE)

START: December 1, 2025

END: Decemebr 1, 2026

PRELIMINARY DATES (DEMO IPF)

START: February 1, 2026

END: May 1, 2026

	2024												2025												2026												2027												2028				
	J	F	M	A	M	J	J	A	S	O	N	D	J	F	M	A	M	J	J	A	S	O	N	D	J	F	M	A	M	J	J	A	S	O	N	D	J	F	M	A	M	J	J	A	S	O	N	D	J	F	M		
Shell / IPF																																																					
Triangle																																																					
McClain / TF																																																					
Camp Randall																																																					

SHELL / IPF

- Complete and fully functional

TRIANGLE AREA

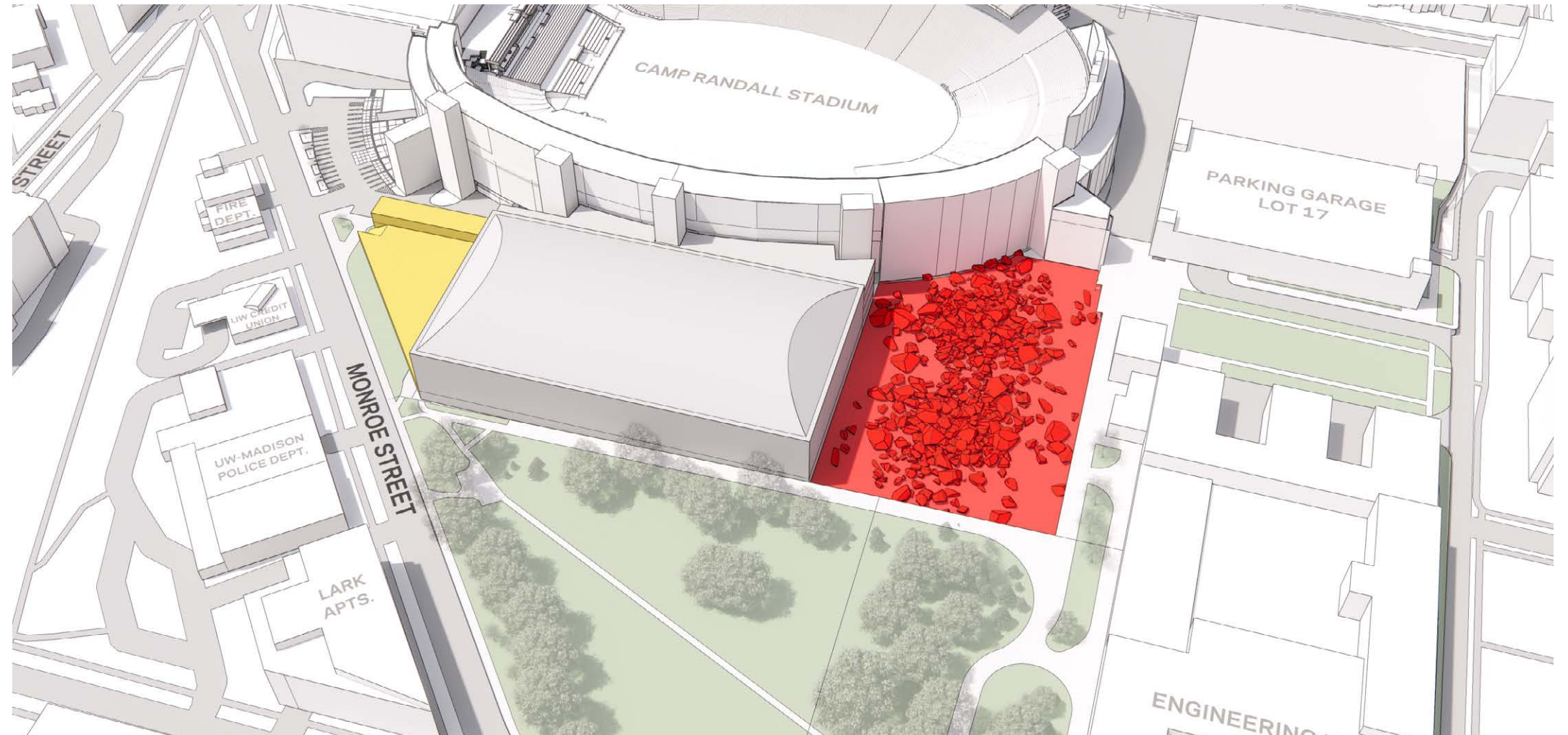
- Construction in "full swing".

MCCLAIN / TRAINING FACILITY

- Existing McClain demolished.

CAMP RANDALL SPACES

- Still functional for staff and student-athletes. Temporary locations being used.



PHASE 5 - 'BOOKEND' CONSTRUCTION

PRELIMINARY DATES (TRIANGLE)

START: December 1, 2025
 END: Decemebr 1, 2026

PRELIMINARY DATES (IPF CONST.)

START: May 1, 2026
 END: September 1, 2027

	2024												2025												2026												2027												2028			
	J	F	M	A	M	J	J	A	S	O	N	D	J	F	M	A	M	J	J	A	S	O	N	D	J	F	M	A	M	J	J	A	S	O	N	D	J	F	M	A	M	J	J	A	S	O	N	D	J	F	M	
Shell / IPF																																																				
Triangle																																																				
McClain / TF																																																				
Camp Randall																																																				

SHELL / IPF

- Complete and fully functional

TRIANGLE AREA

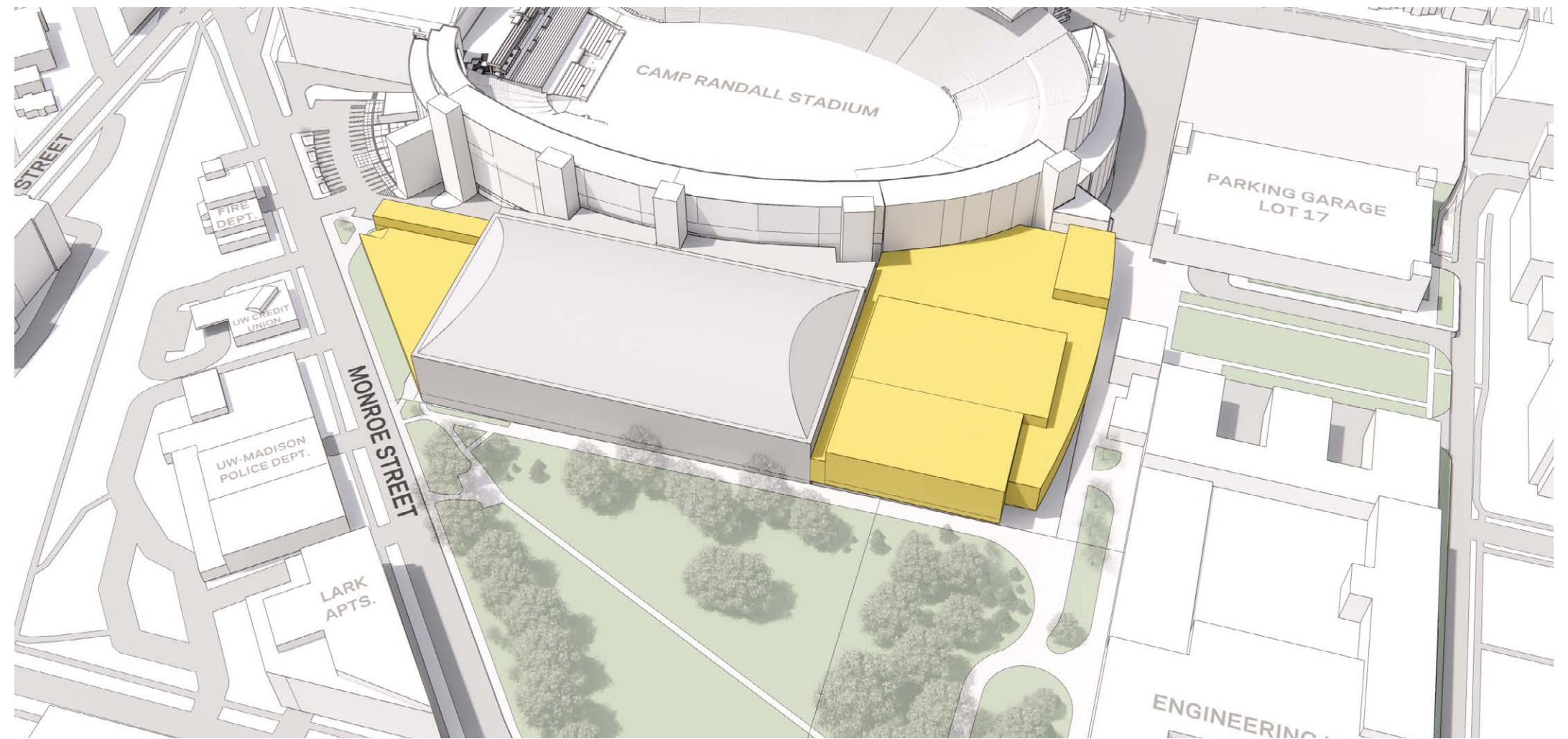
- Construction continues on Triangle site.

MCCLAIN / TRAINING FACILITY

- Construction begins on new Training Facility.

CAMP RANDALL SPACES

- Still functional for staff and student-athletes. Temporary locations being used.



PHASE 6 - TRAINING FACILITY CONSTRUCTION

PRELIMINARY DATES

START: May 1, 2026

END: September 1, 2027

	2024												2025												2026												2027												2028				
	J	F	M	A	M	J	J	A	S	O	N	D	J	F	M	A	M	J	J	A	S	O	N	D	J	F	M	A	M	J	J	A	S	O	N	D	J	F	M	A	M	J	J	A	S	O	N	D	J	F	M		
Shell / IPF																																																					
Triangle																																																					
McClain / TF																																																					
Camp Randall																																																					

SHELL / IPF

- Complete and fully functional

TRIANGLE AREA

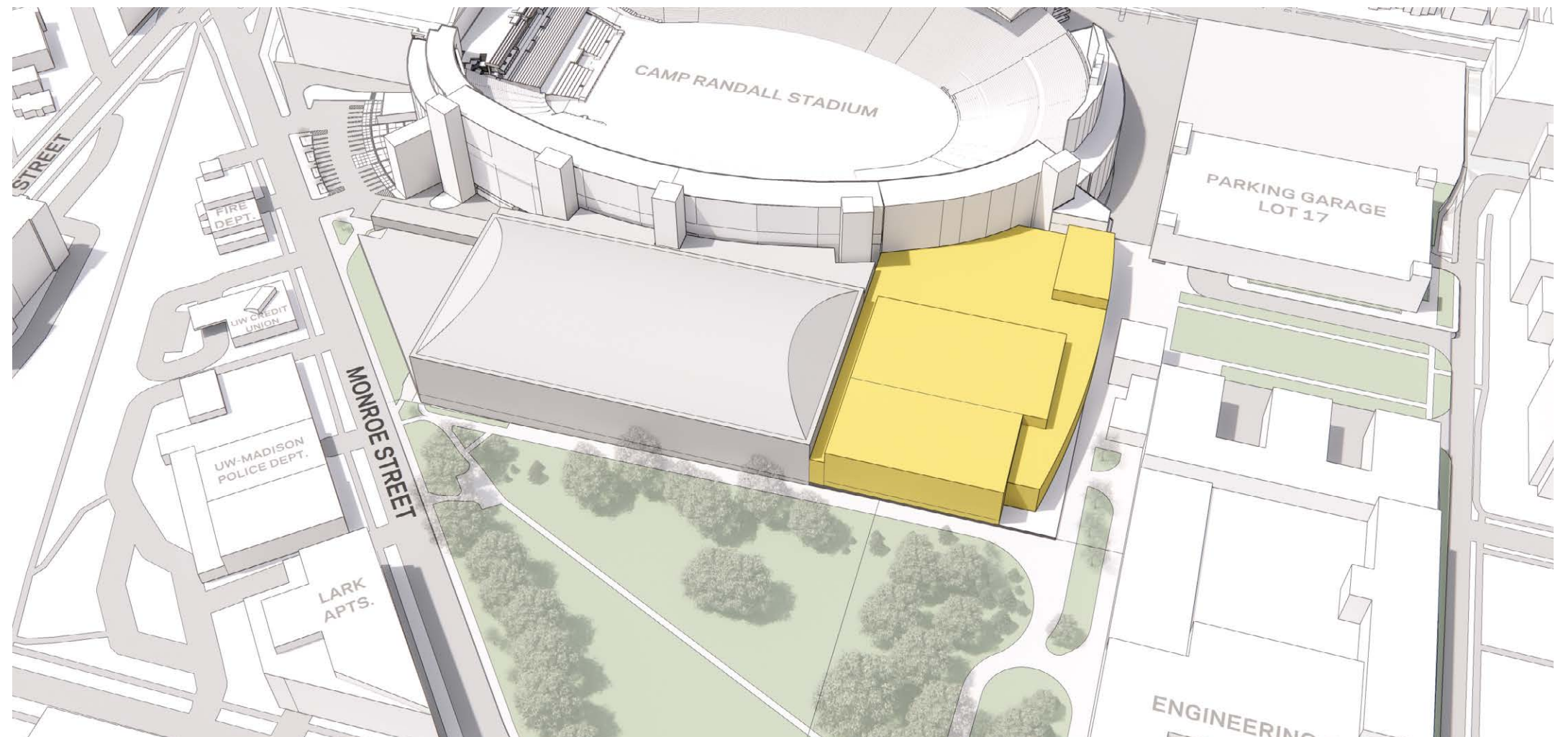
- Complete and fully functional

MCCLAIN / TRAINING FACILITY

- Construction continues on new Training Facility.

CAMP RANDALL SPACES

- Still functional for staff and student-athletes. Temporary locations being used.



PHASE 7 - RENOVATE VACATED SPACES

PRELIMINARY DATES

START: September 1, 2027

END: TBD

	2024												2025												2026												2027												2028		
	J	F	M	A	M	J	J	A	S	O	N	D	J	F	M	A	M	J	J	A	S	O	N	D	J	F	M	A	M	J	J	A	S	O	N	D	J	F	M	A	M	J	J	A	S	O	N	D	J	F	M
Shell / IPF																																																			
Triangle																																																			
McClain / TF																																																			
Camp Randall																																																			

SHELL / IPF

- Complete and fully functional

TRIANGLE AREA

- Complete and fully functional

MCCLAIN / TRAINING FACILITY

- Complete and fully functional

CAMP RANDALL SPACES

- Renovate vacated spaces and remove temporary conditions.

