



Central Isthmus Watershed Study Solutions

City of Madison Engineering Division
Board of Public Works
April 22, 2026

[Link to Final Report](#)

(Or can be found on the project page:

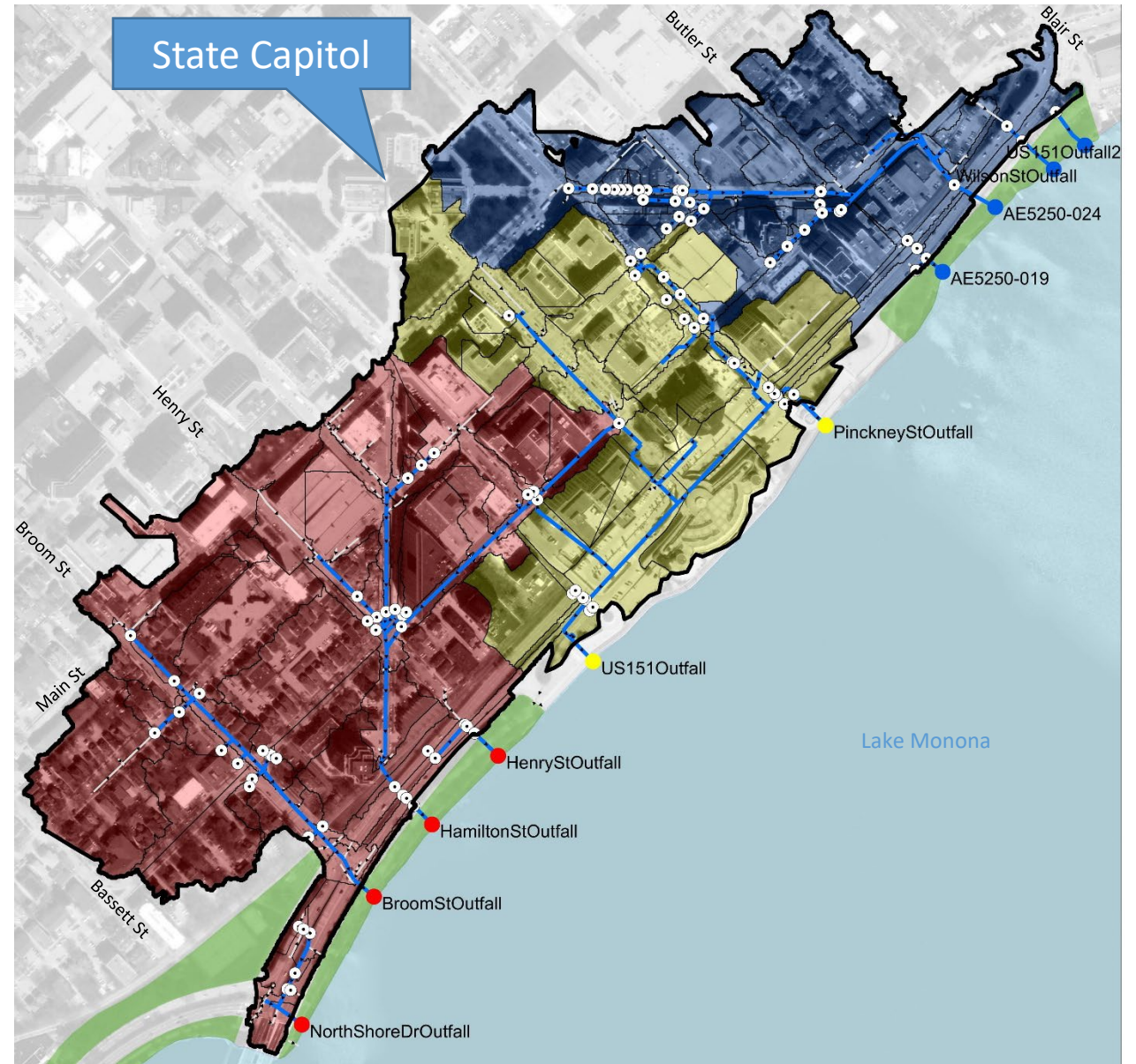
www.cityofmadison.com/engineering/projects/central-isthmus-watershed-study)

CITY OF MADISON



Project Location

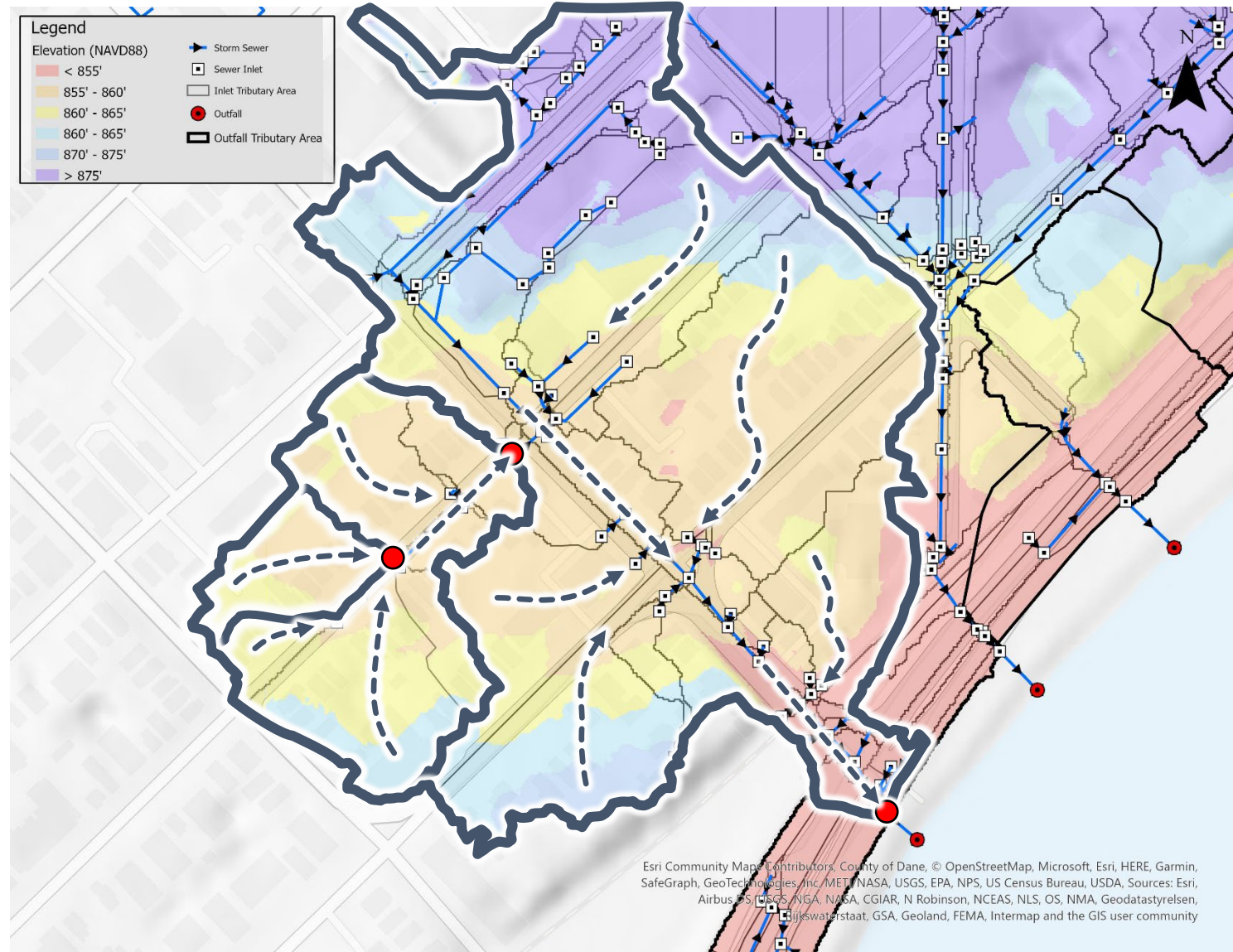
- This is the Central Isthmus Watershed
- Drainage area is 107 acres



Where the Water Goes

What's a watershed?

- A watershed is the area of land that drains precipitation (rain, snow, etc.) to a common low point, such as an inlet, stream, or lake.
- Determined by surface terrain and underground pipe system.



Central Isthmus Watershed Study Milestones

- PIM: 9/1/22
- Report Public Comment Period: 12/2/25-1/13/26 (no comments received)
- BPW: 4/22/26
- FINAL REPORT:

https://www.cityofmadison.com/engineering/documents/projects/Central_Isthmus_Final_Report-10-31-2025.pdf

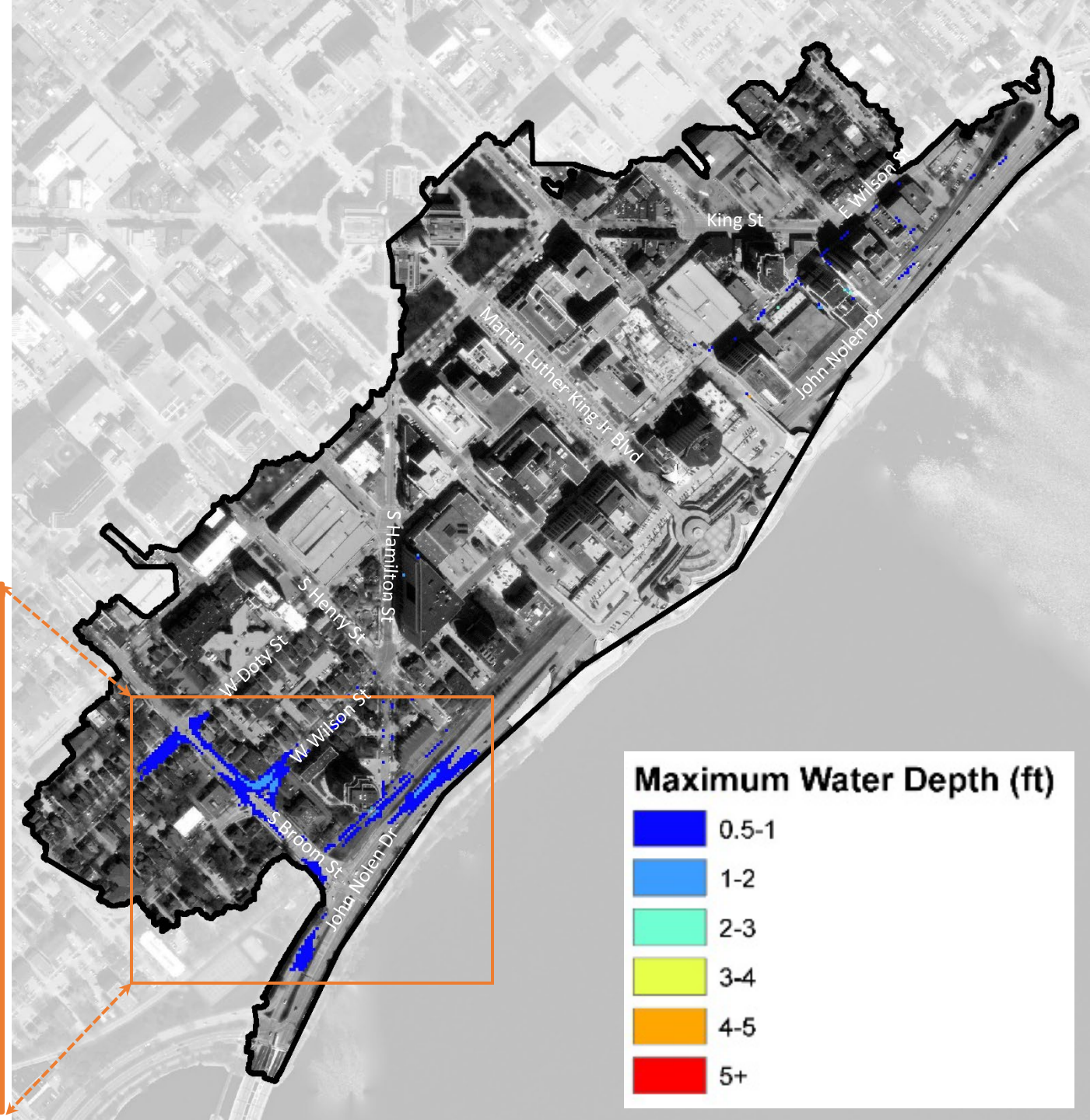
This study was launched in tandem with the East Isthmus Watershed Study in advance of the Wilson/Broom reconstruction project to identify flood solutions that could be built with the project.

Due to the watershed's size and limited flood issues, this study was fast-tracked. We hosted 1 public meeting with the content from the three standard meetings.

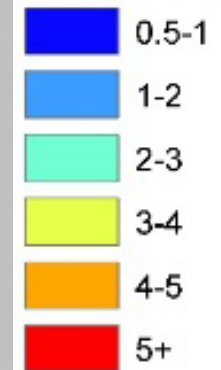
The City received a lot of feedback from residents in known flooding areas prior to the project that we were able to use while completing the study.

Existing Conditions Inundation Mapping

1% Chance Event
(6.66 inches in 24 hours)

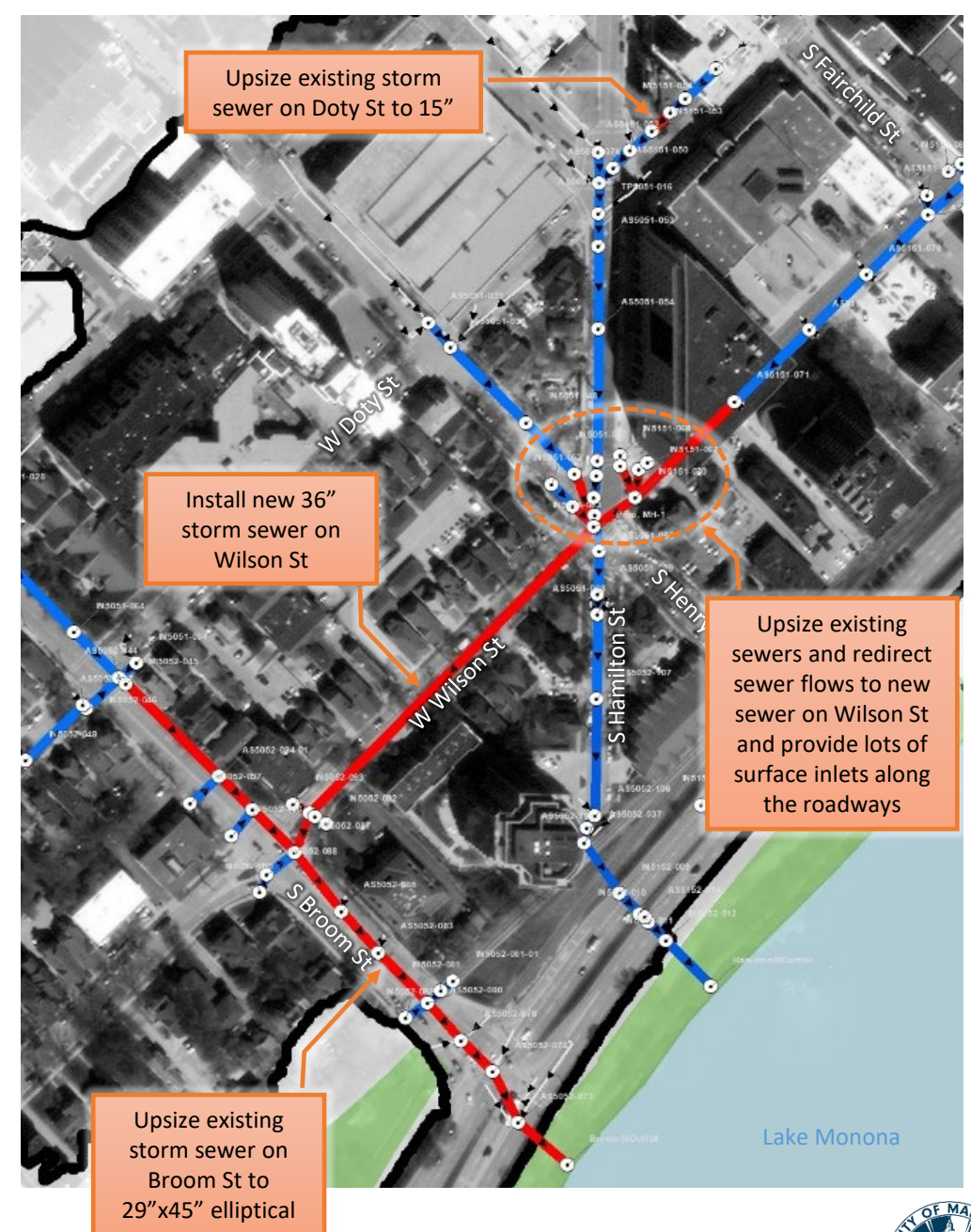


Maximum Water Depth (ft)



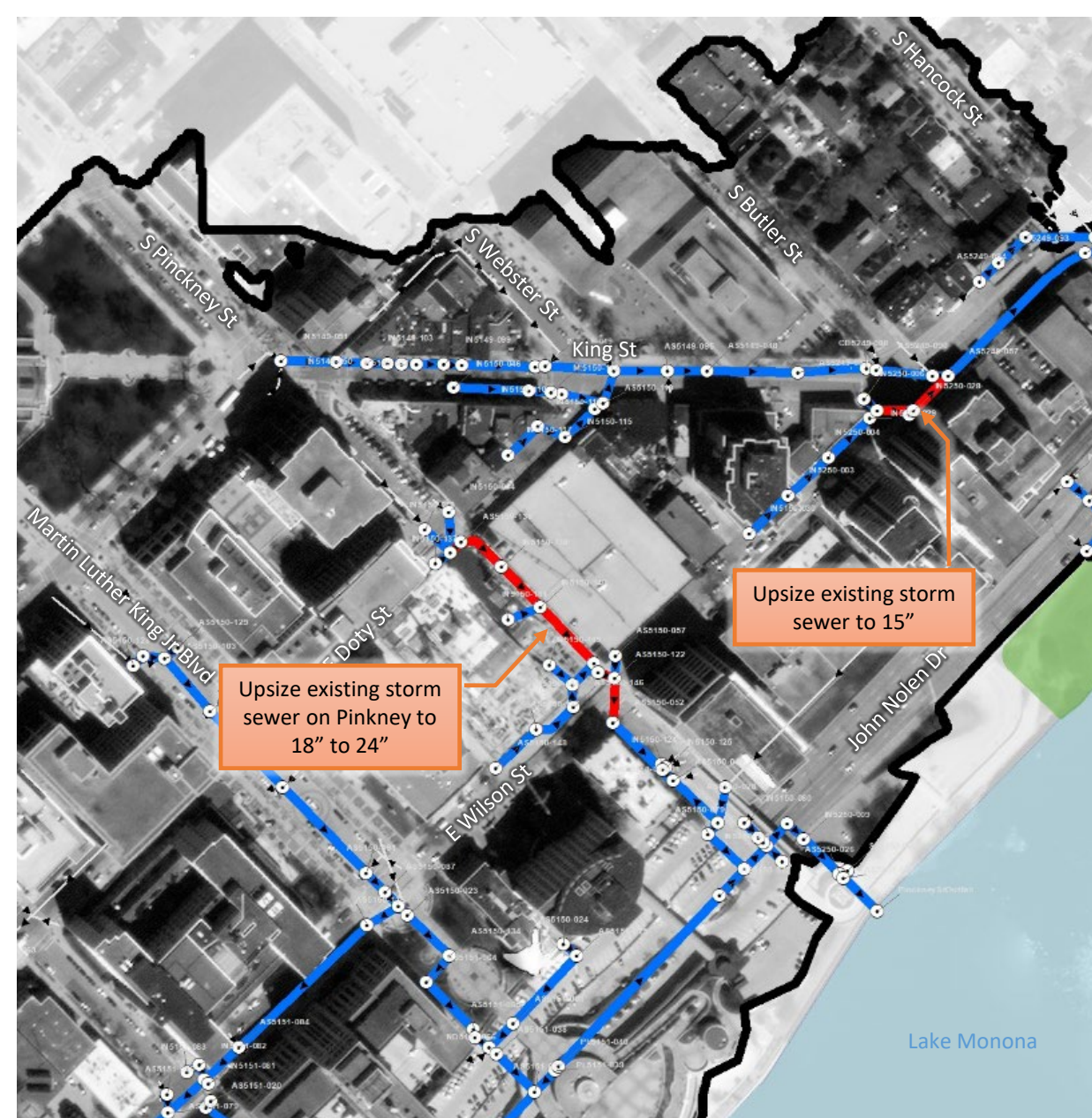
Proposed Solutions Broom + Wilson Storm Sewers

- Proposed local storm sewer improvements
- Removes structures from 1% chance flood risk
- Improves street passability for 1,800 feet of streets
- Reduces flood risk of downstream properties
- Most of the pipe upsizing to be completed with Broom/Wilson project
- Railroad to lake constructed with John Nolen Drive Project

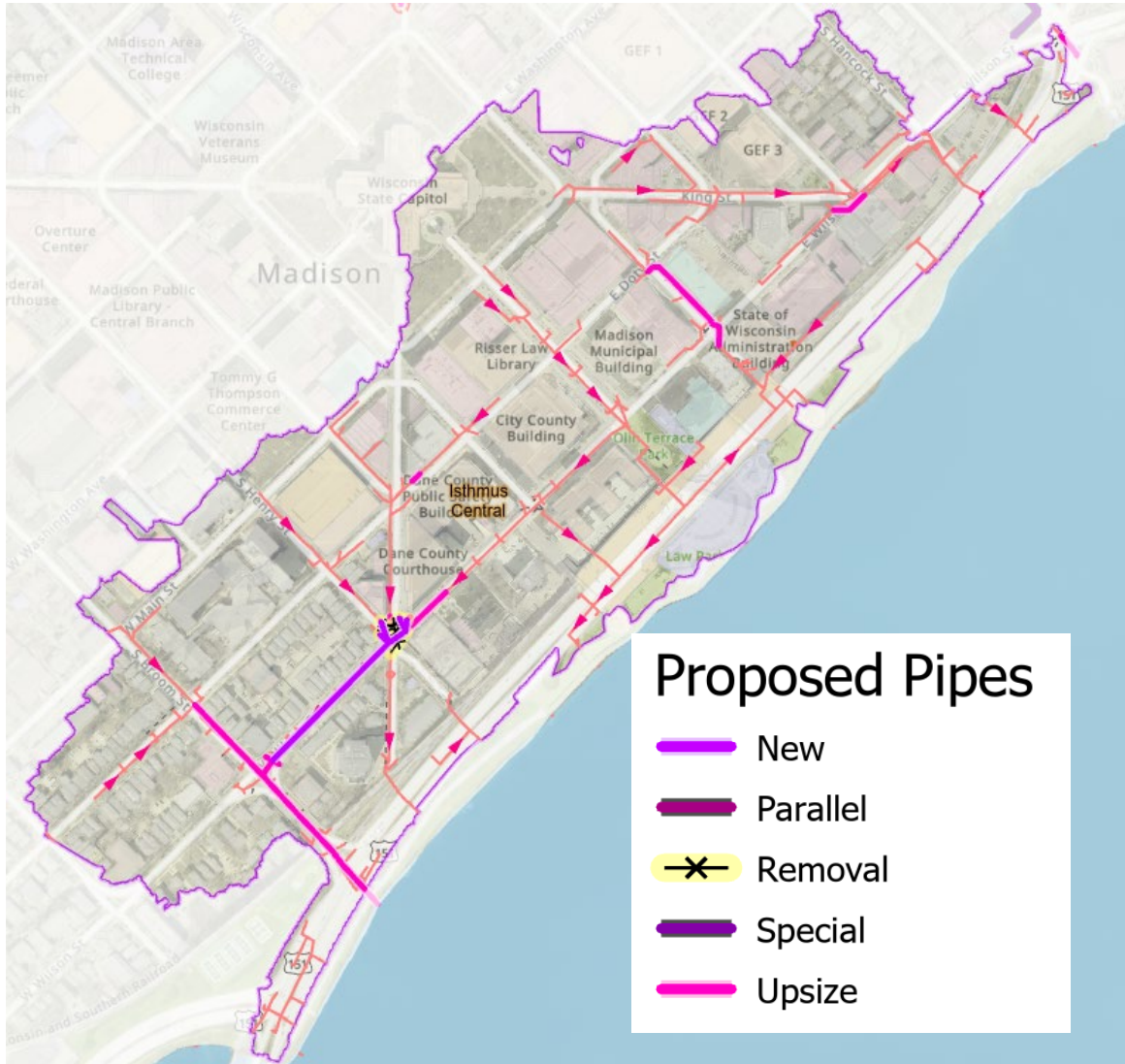


Proposed Solutions Pinckney + Wilson Storm Sewers

- Proposed local storm sewer improvements
- Removes structures from 1% chance flood risk
- Reduces flood risk of downstream properties
- Implemented in conjunction with street reconstruction projects
- Section on Pinckney is in budget, designing this fall

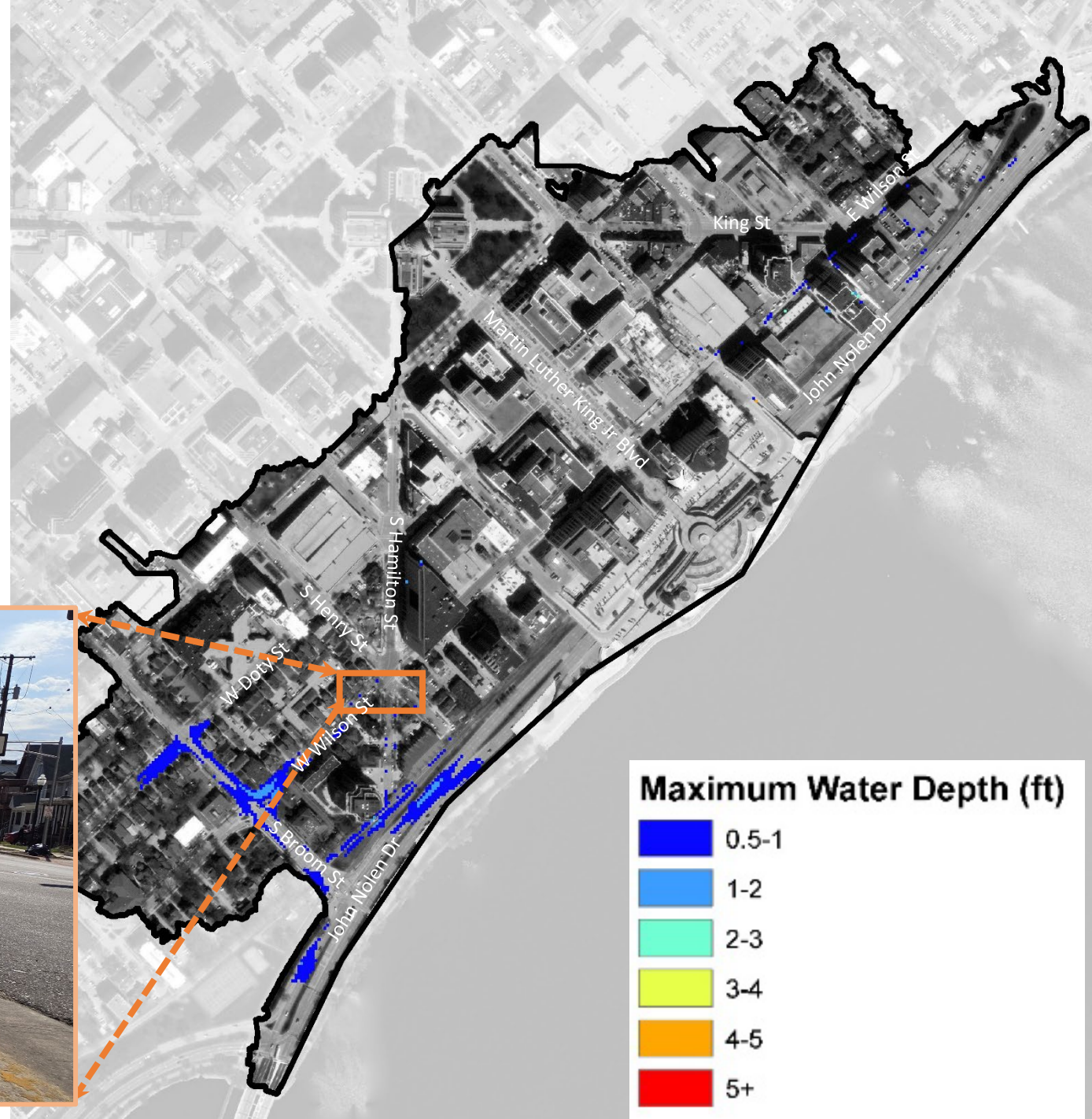


Constructed Pipes



Raised Path Crossing

- Bike/ped safety
- Stormwater diversion
 - Prevents stormwater that comes from S Hamilton, S Henry and W Wilson St from flowing down Hamilton cul-de-sac where a building floods



Public Outreach

4,643+ points of outreach or interactions for the Central Isthmus Watershed Study



Public Meetings
1 virtual meeting



Postcards sent
3,340



Project Website
1,233 views



Email Lists
66 subscribers



Social Media Posts
3 related project posts

Questions/Discussion

