



Crowley Station



CROWLEY STATION







HELP MAKE THIS A REALITY

LAKEFRONT PORCH

ON WILSON
A COMMUNITY GARDEN

LAKEFRONT PORCH ON WILSON is a new community garden located on the east side of the city of Chicago. It is a 1/2 acre garden with a paved walkway, a playground, and a picnic area. The garden is located on the east side of the city of Chicago, near the intersection of Lakefront Drive and Wilson Street. The garden is a great place for families to spend time outdoors and enjoy the view of the lake. The garden is a great place for families to spend time outdoors and enjoy the view of the lake. The garden is a great place for families to spend time outdoors and enjoy the view of the lake.

- Accessible
- Safe
- Affordable
- Convenient
- Beautiful
- Healthy
- Fun

For more information, visit [www.lakefrontporch.org](#)



E. WILSON ST.

EXISTING BENCHES TO REMAIN

(5) TABLE/CHAIR SETS MATCH EXISTING

STAIRS 28 SF

(1) 6' X 8' FRAME WITH DONOR RECOGNITION AND INFORMATIONAL SIGNS

(20) NEW PLANTER BOXES REPLACES EXISTING CAPACITY

RAMPS TO RAISED PLATFORM AND UPPER LEVEL 250 SF

RAISED PLATFORM 1,050 SF

RECENTLY CONSTRUCTED RAMP-ACCESSIBLE ROUTE FROM SIDEWALK TO MAIN LEVEL

LAKEFRONT PORCH @ CROWLEY STATION

SITE PLAN SCALE 1/8" = 1' @ 11 X 17

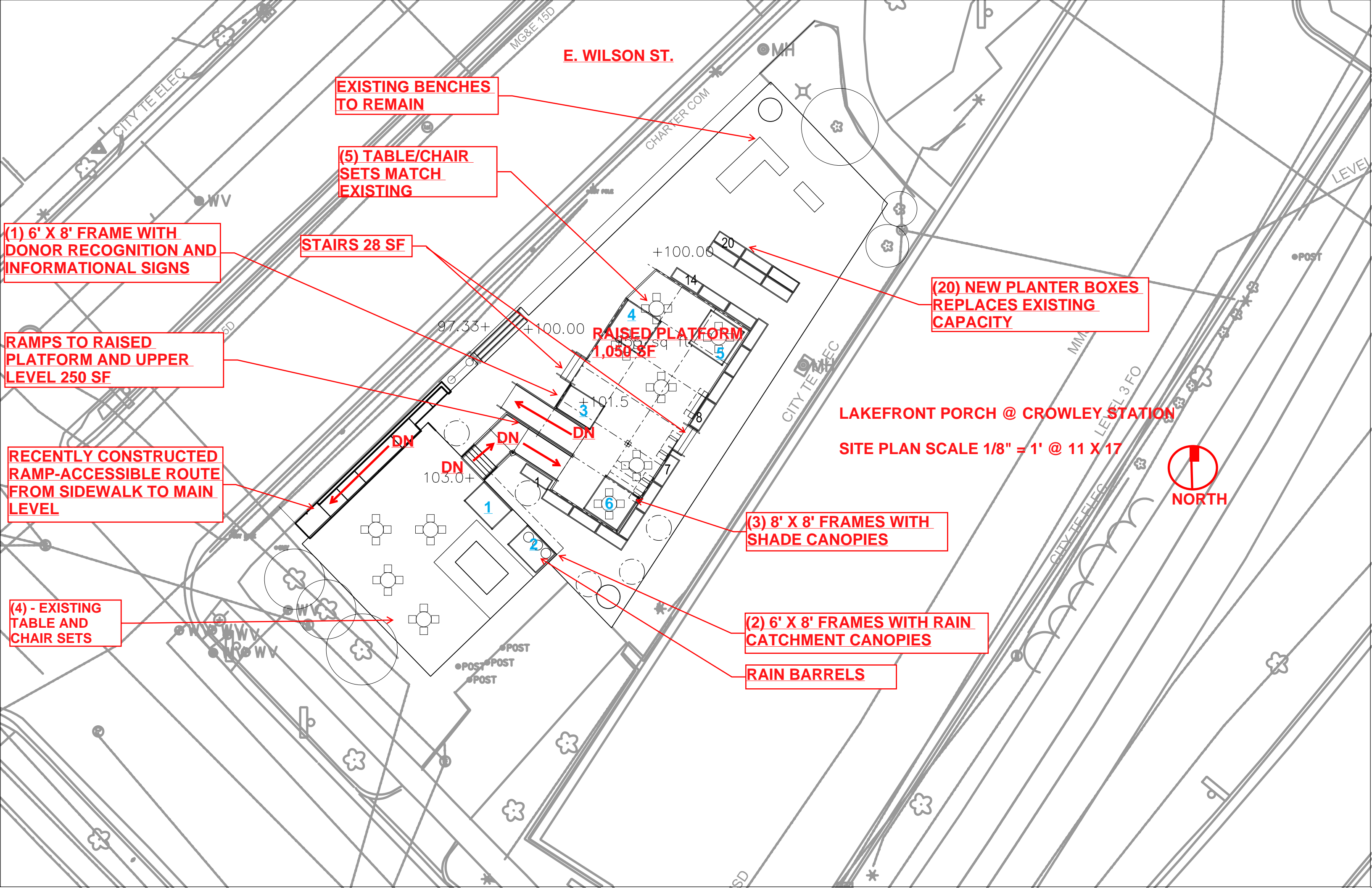


(3) 8' X 8' FRAMES WITH SHADE CANOPIES

(4) - EXISTING TABLE AND CHAIR SETS

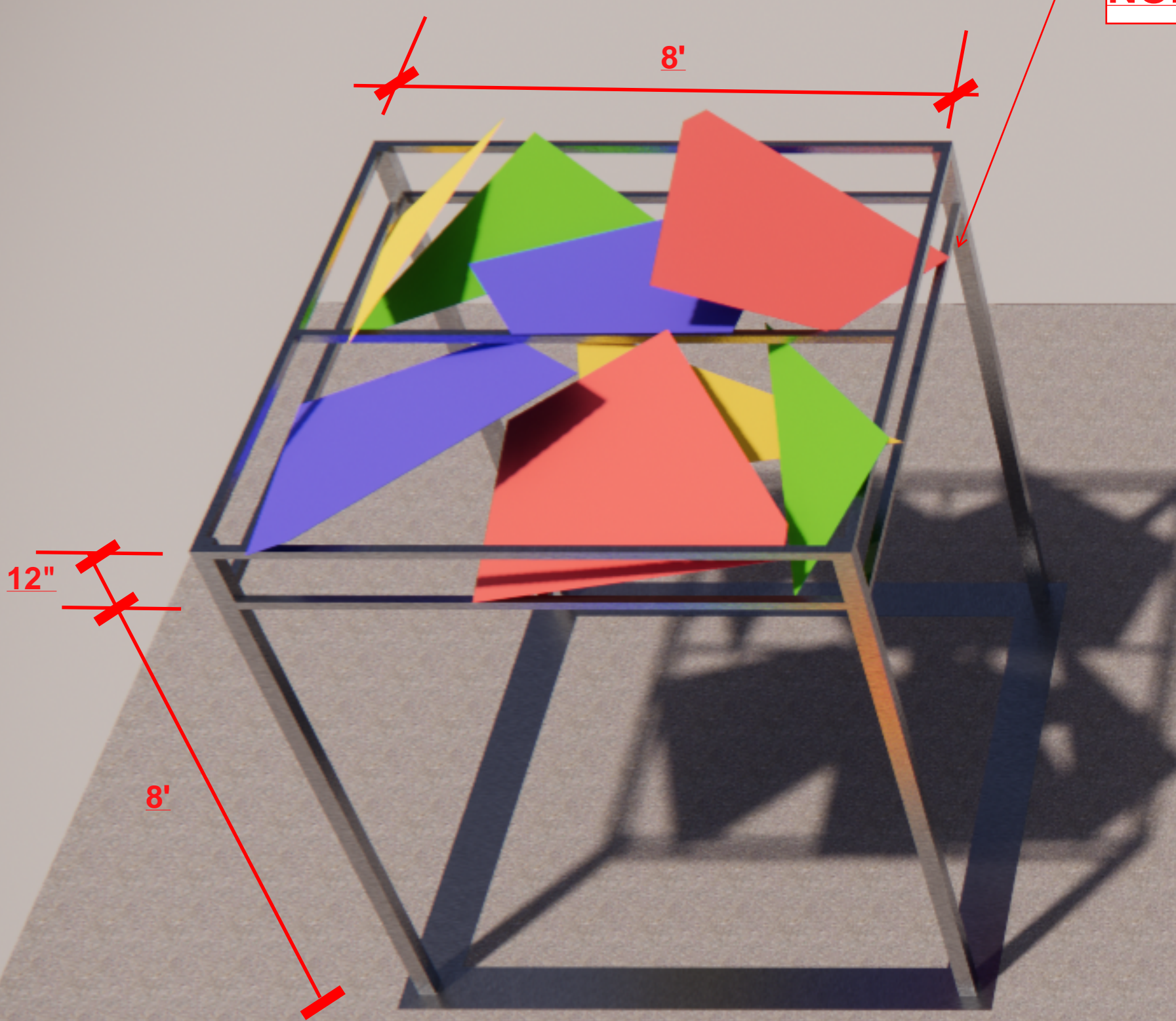
(2) 6' X 8' FRAMES WITH RAIN CATCHMENT CANOPIES

RAIN BARRELS

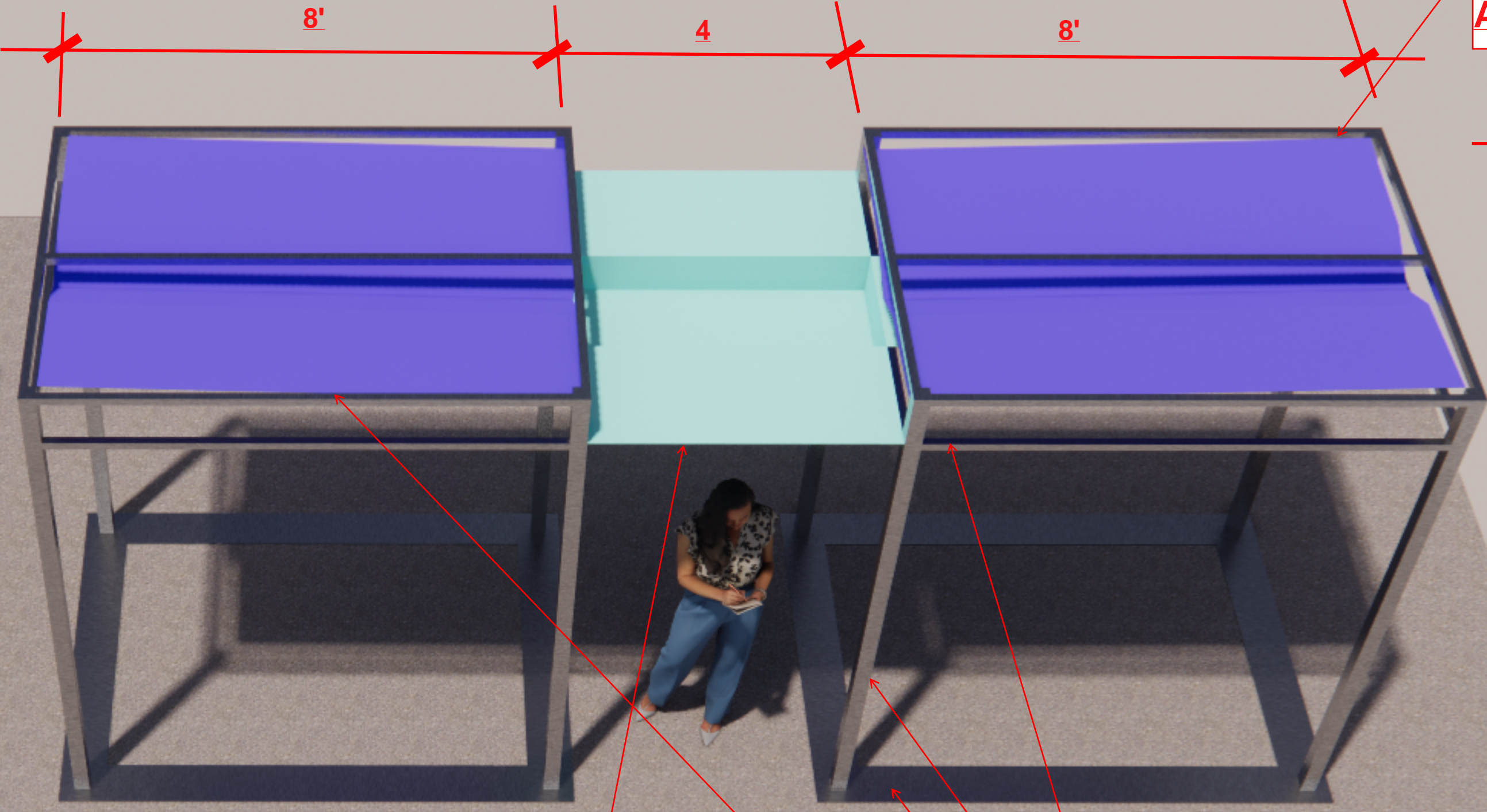


ARE PERFORATED PANELS WELDED TO FRAME OR CAN THEY BE MECHANICALLY ATTACHED? WORRIED ABOUT TRANSPORT IF WELDED, WORRIED ABOUT WEAR/TEAR AND NOISE IF MECHANICALLY ATTACHED.

RAIN CATCHMENT CANOPY FROM 1/8" ALUM. SHEET



SHADE STRUCTURE



CENTER CATCHMENT TROUGH

RAIN CATCHMENT CANOPY



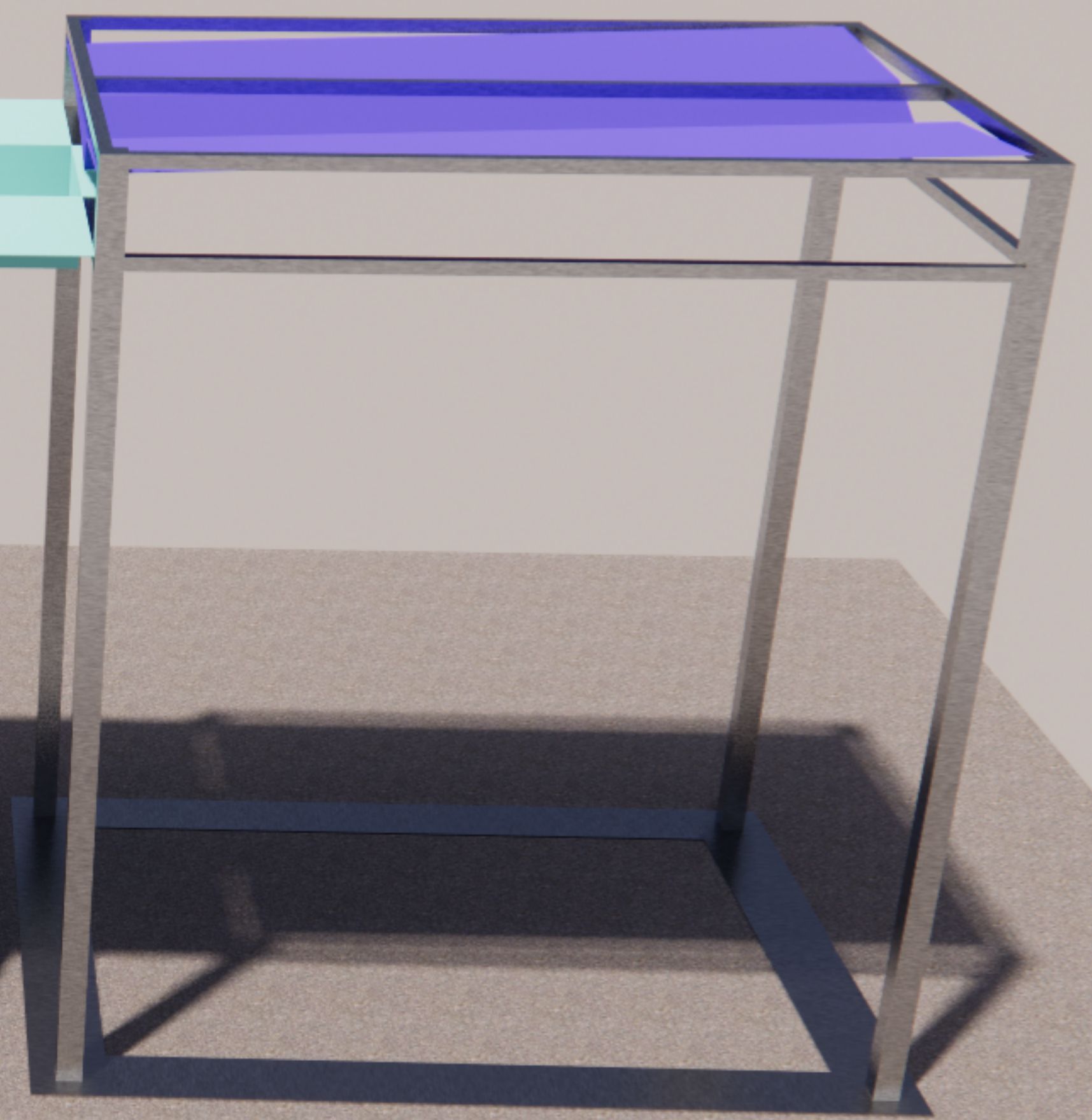
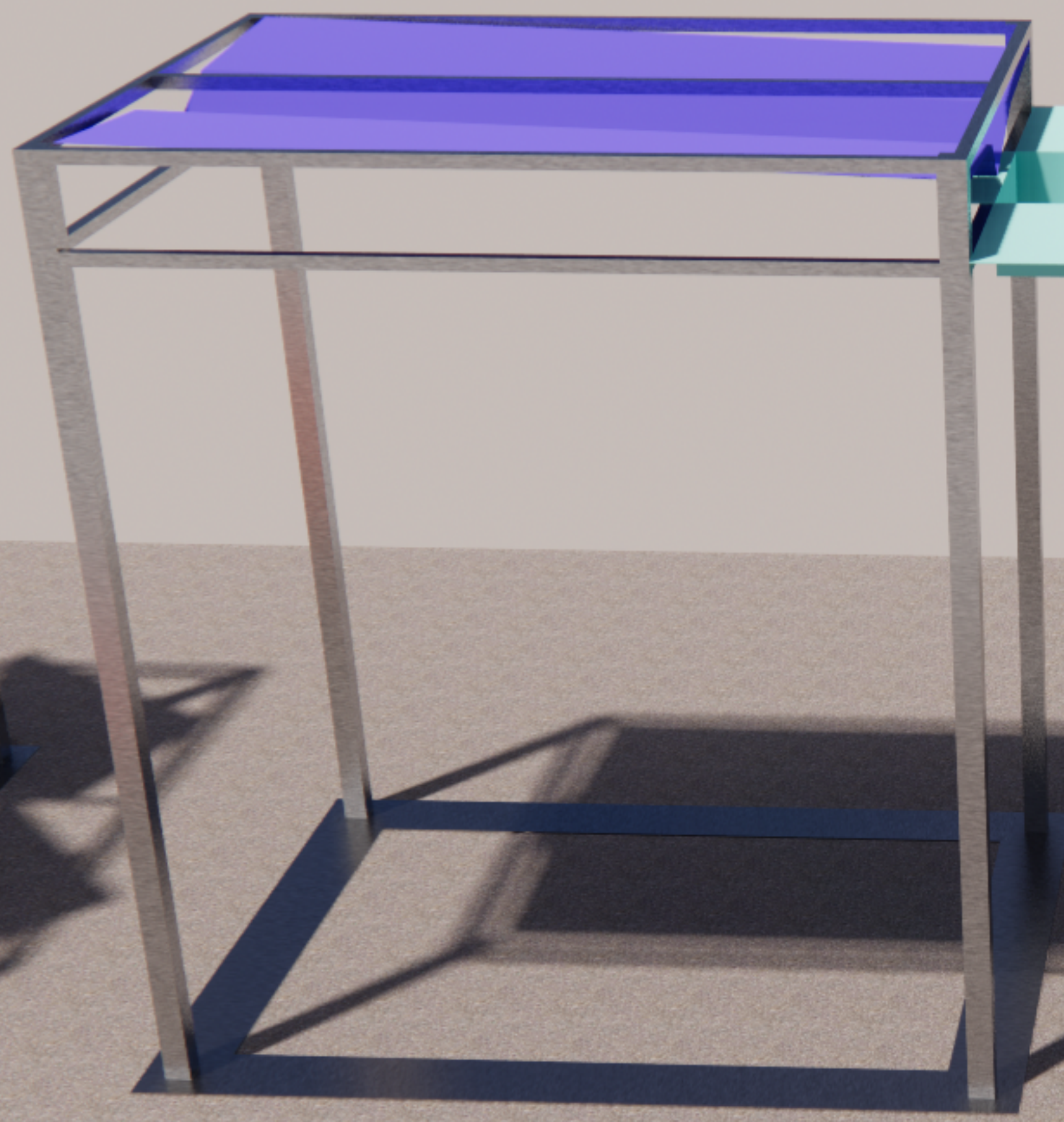
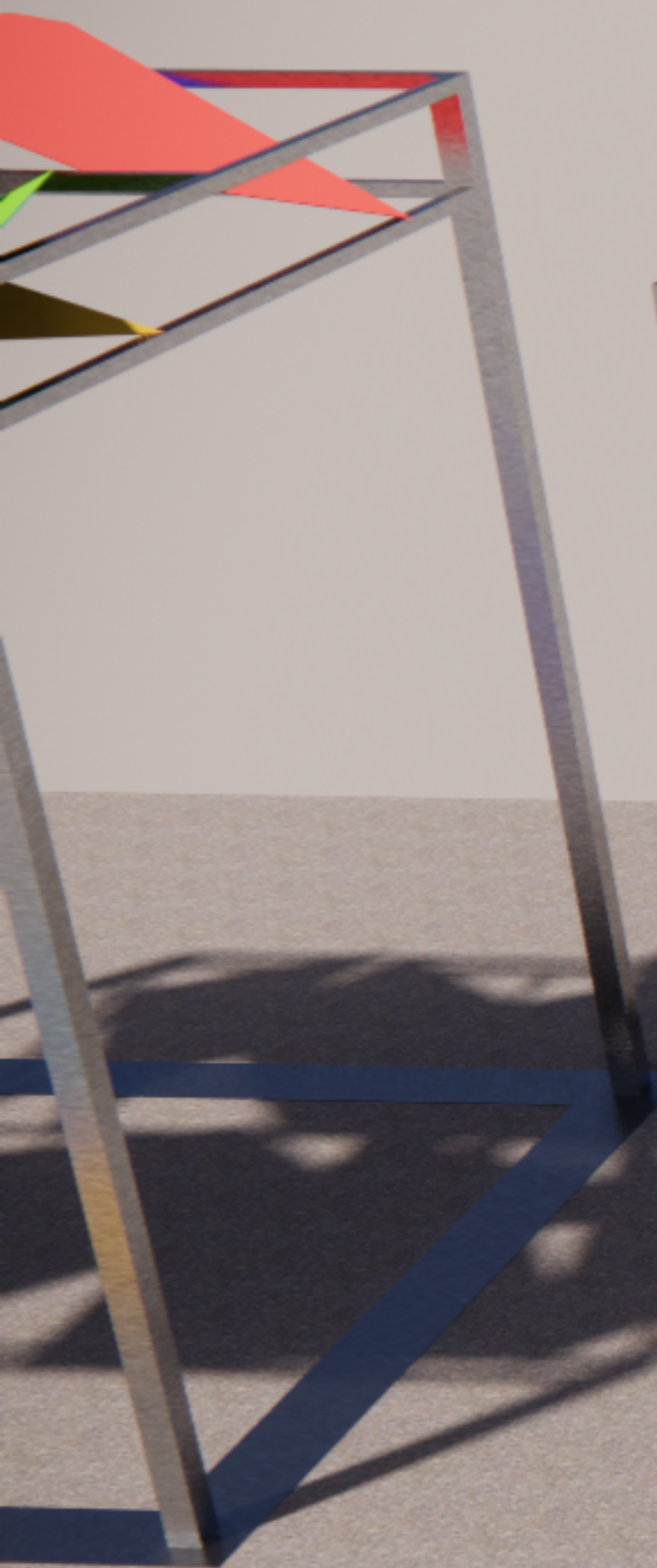
SHAPES CUT FROM 4' X 8' X 1/8" PERFORATED PANEL
2 PANELS PER EACH SHADE STRUCTURE

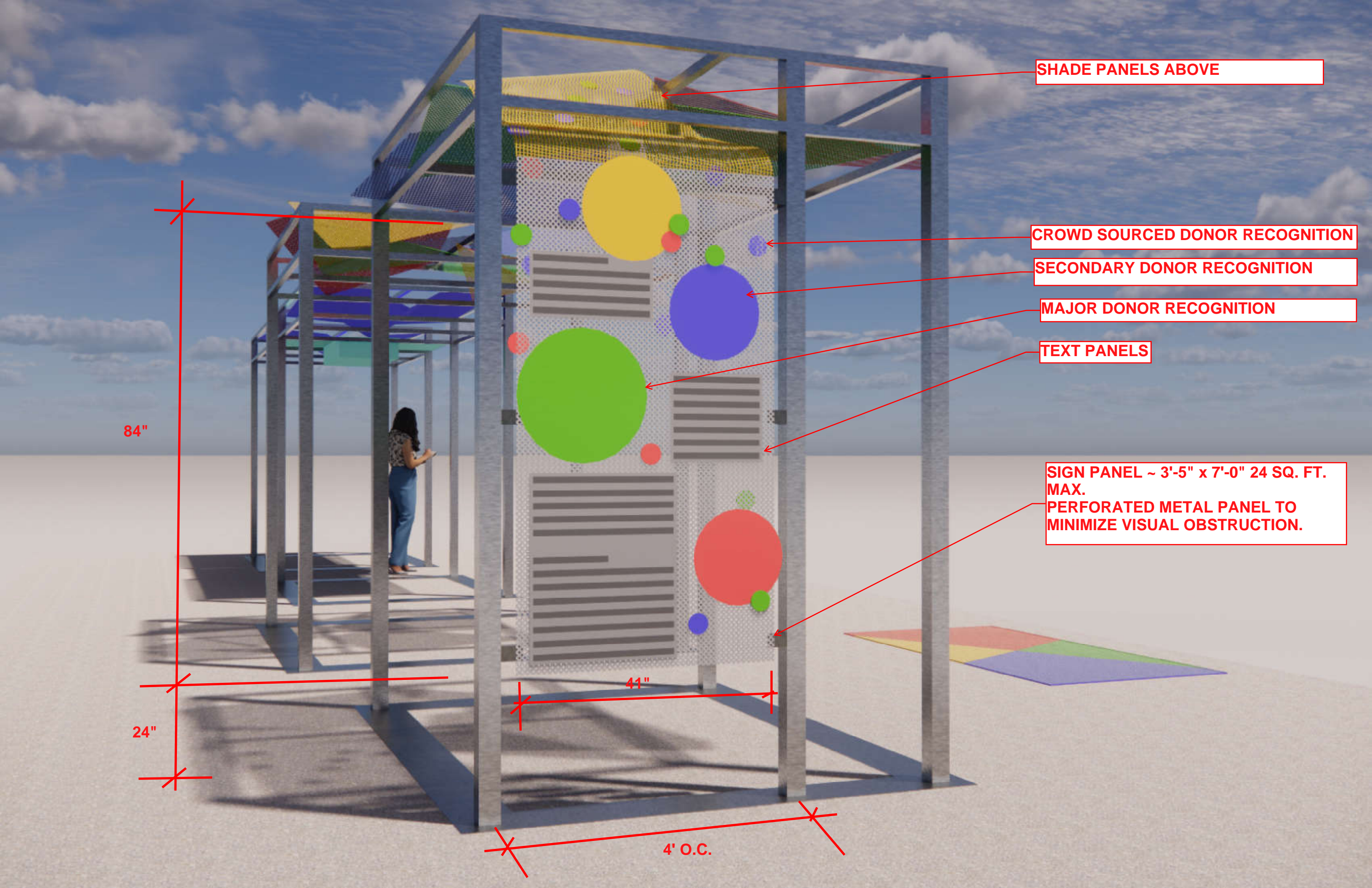
1-1/2" SQ. TOP/INTERMEDIATE RAILS

3" SQ. CORNER POST

1/4" X 9" ALUM. BASE PLATE

CONSIDER A WAY TO DETACH OR TILT THE RAIN CATCHMENT PANELS SO THEY DON'T CAPTURE SNOW





SHADE PANELS ABOVE

CROWD SOURCED DONOR RECOGNITION

SECONDARY DONOR RECOGNITION

MAJOR DONOR RECOGNITION

TEXT PANELS

SIGN PANEL ~ 3'-5" x 7'-0" 24 SQ. FT. MAX.
PERFORATED METAL PANEL TO MINIMIZE VISUAL OBSTRUCTION.

84"

24"

41"

4' O.C.



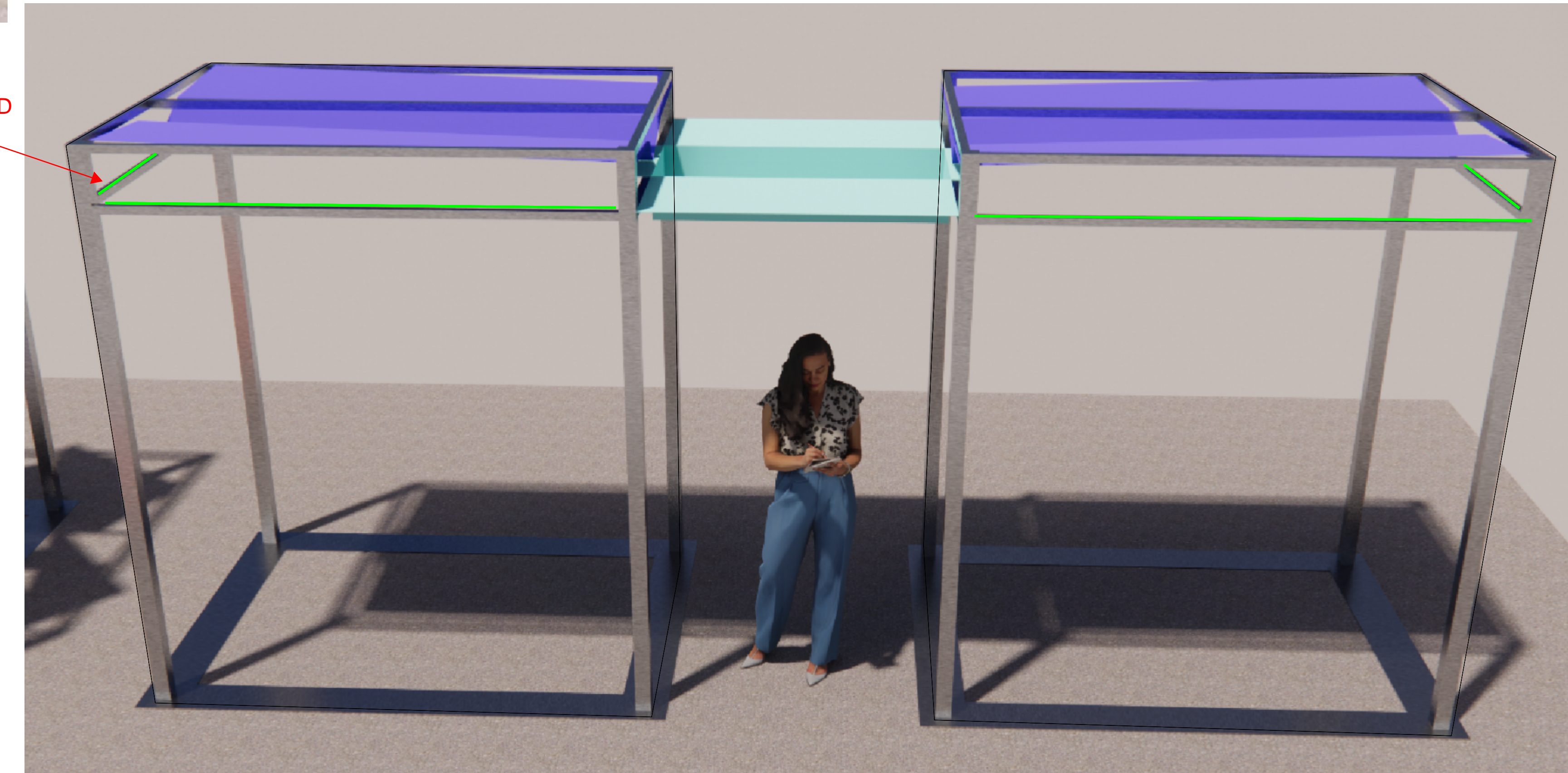
DONOR STRUCTURE

Blue static LED Striplight



TABLE STRUCTURE

Red static LED Striplight



WATER CATCHER STRUCTURE

Green static LED Striplight

Lighting Design Basis

FlexfireLEDs Outdoor IP65 ColorBright Vivid Color Series LED Striplight , available in four colors; Green 134lm/ft, Red 91lm/ft, Blue 55lm/ft, Amber 263lm/ft. Mounted in Atlas Mounting Channel, a surface mount channel with a 45-degree angle and a matte lens. The channel will throw the 44% diffused colored light towards the perforated metal panels on the top of the structures providing visual emphasis to the panels. The matte lens allows for an even glow with no hot spots and will be compliant with night sky guidelines.

Each structure will have a solar panel, converter and photo-eye to power the lighting fixtures. The light fixtures will be controlled by the photo-eye for dusk to dawn operation.

