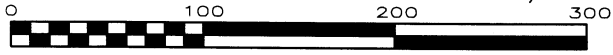


# CERTIFIED SURVEY MAP No. \_\_\_\_\_

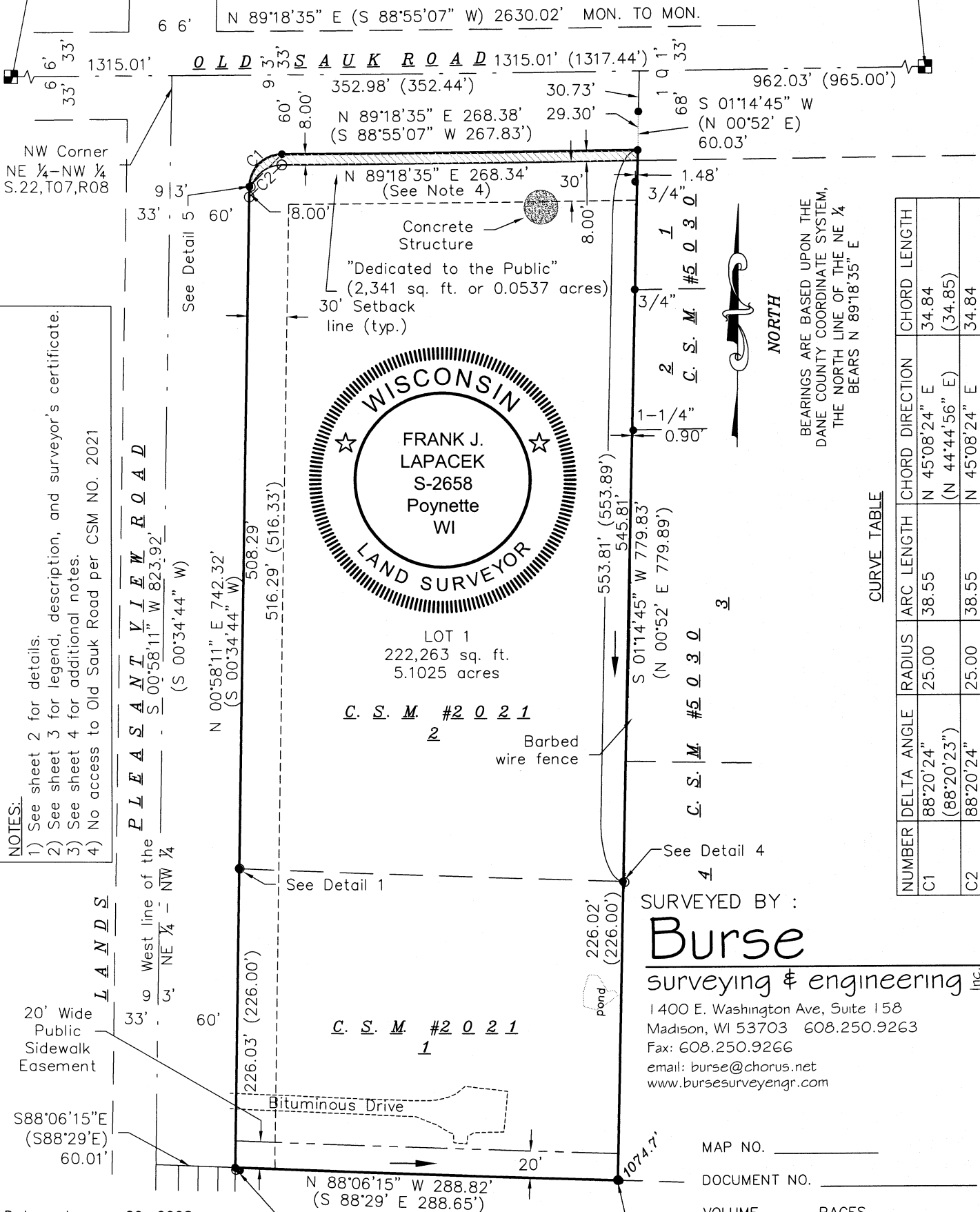
ALL OF LOTS 1 AND 2 OF CERTIFIED SURVEY MAP NUMBER 2021, AS RECORDED IN VOLUME 8 OF CERTIFIED SURVEY MAPS, ON PAGES 185-186, AS DOCUMENT NUMBER 1469696, DANE COUNTY REGISTRY, ALSO BEING A PART OF THE NORTHEAST QUARTER (1/4) OF THE NORTHWEST QUARTER (1/4) OF SECTION 22, TOWNSHIP 07 NORTH, RANGE 08 EAST, CITY OF MADISON, DANE COUNTY, WISCONSIN



SCALE : ONE INCH = ONE HUNDRED FEET

NW CORNER SEC. 22-07-08 BRASS CAPPED MONUMENT FOUND  
 DCCS COORDINATES PER TIE SHEET BY CARL M. SANDSNES  
 DATED FEBRUARY 16, 2004: N=482886.89 E=779012.70  
 COORDINATES PER PRAIRIE POINT PLAT, DOC. NO. 3371965:  
 N=392058.944 E=2122424.869

N 1/4 CORNER SEC. 22-07-08 ALUMINUM MONUMENT FOUND  
 DCCS COORDINATES PER TIE SHEET BY CARL M. SANDSNES  
 DATED FEBRUARY 16, 2004: N=482918.57 E=781642.54  
 COORDINATES PER PRAIRIE POINT PLAT, DOC. NO. 3371965:  
 N=392108.68 E=2125054.42



**NOTES:**  
 1) See sheet 2 for details.  
 2) See sheet 3 for legend, description, and surveyor's certificate.  
 3) See sheet 4 for additional notes.  
 4) No access to Old Sauk Road per CSM NO. 2021

BEARINGS ARE BASED UPON THE  
 DANE COUNTY COORDINATE SYSTEM,  
 THE NORTH LINE OF THE NE 1/4  
 BEARS N 89°18'35" E

CURVE TABLE

NUMBER	DELTA ANGLE	RADIUS	ARC LENGTH	CHORD LENGTH	CHORD DIRECTION	CHORD LENGTH
C1	88°20'24" (88°20'23")	25.00	38.55	34.84	N 45°08'24" E (N 44°44'56" E)	34.84 (34.85)
C2	88°20'24"	25.00	38.55	34.84	N 45°08'24" E	34.84

SURVEYED BY :  
**Burse**  
 surveying & engineering Inc.  
 1400 E. Washington Ave, Suite 158  
 Madison, WI 53703 608.250.9263  
 Fax: 608.250.9266  
 email: burse@chorus.net  
 www.bursesurveyengr.com

Date: January 09, 2008  
 Paper Space Plot View: Sht1  
 \Projects\BSE595\CSM\CSBSE595.dwg

MAP NO. \_\_\_\_\_  
 DOCUMENT NO. \_\_\_\_\_  
 VOLUME \_\_\_\_\_ PAGES \_\_\_\_\_