

Public Informational Meeting

East Johnson Street Reconstruction 2014

N Butler Street to N Baldwin Street

June 19, 2013

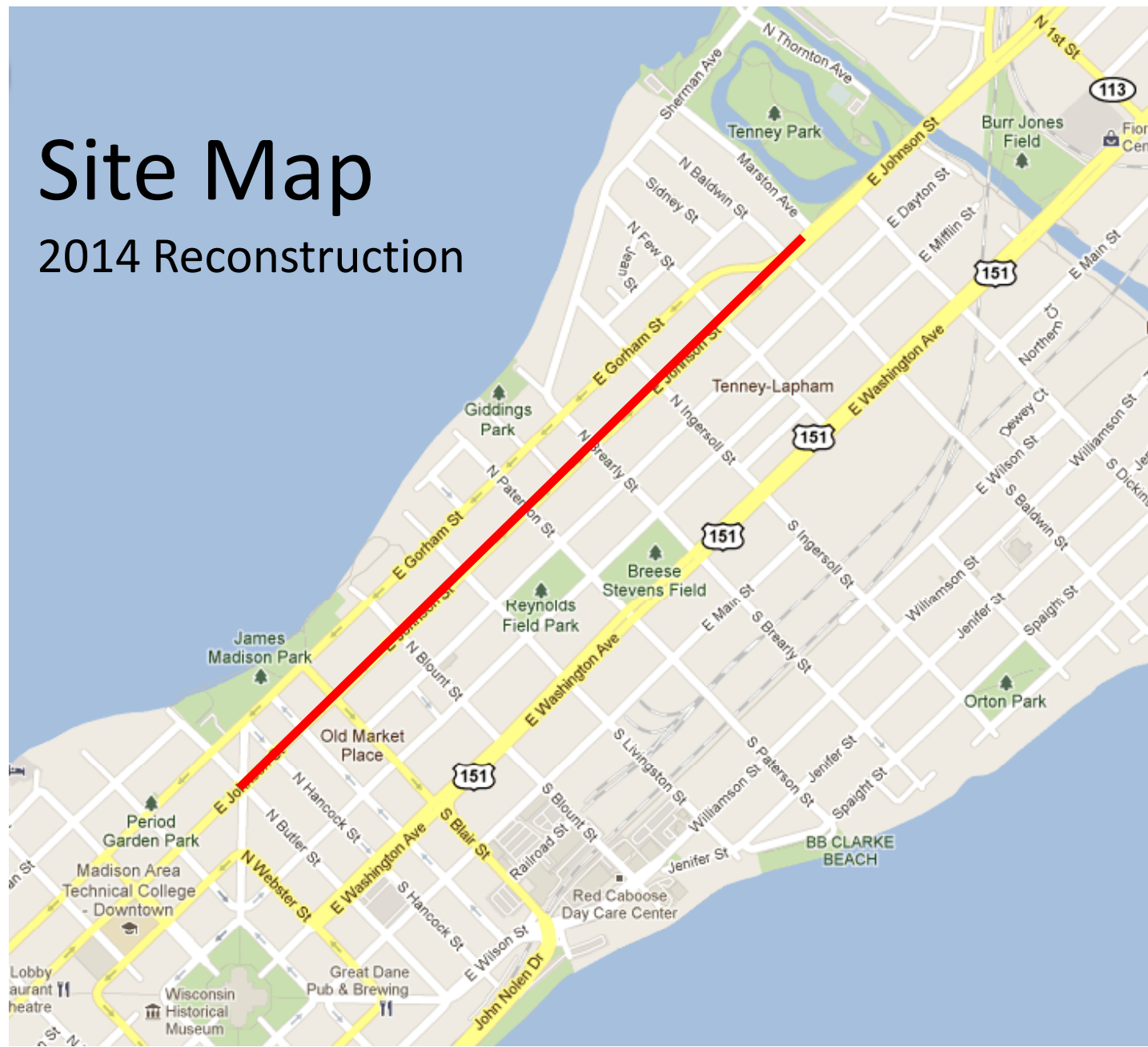


Presentation Outline:

- **Existing Conditions**
- **Proposed Roadway Design Elements**
- **Proposed Streetscape Design Elements**
- **Construction**
- **Special Assessment Policy**
- **Questions and Answers**

Site Map

2014 Reconstruction



Existing Conditions



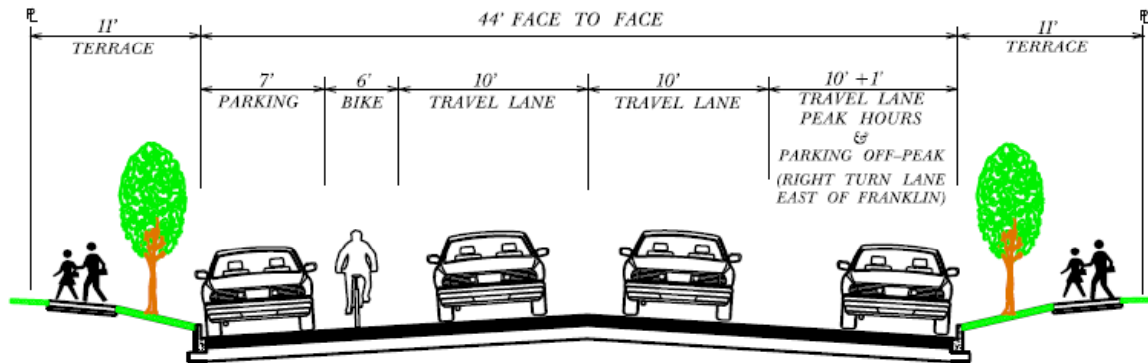
- Pavement rating 4 out of 10
- Curb rating 3 to 4 out of 10
- Storm Sewer 1900's & 1920's 12" clay pipe
- Sanitary Sewer 1900's 6" clay pipe
- Water Main 4" 1880's & 12" 1920's iron pipe
- Substandard bike & pedestrian accommodations

Proposed Roadway Improvements

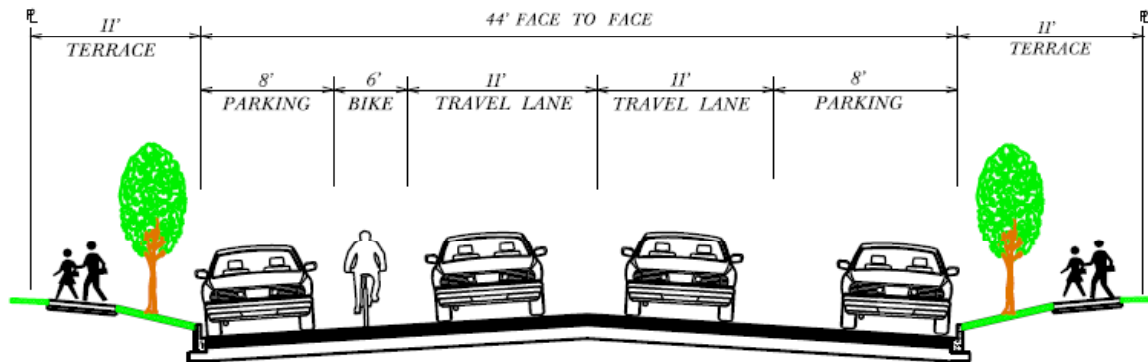
- New pavement, curb & gutter & drive aprons
- Sidewalk replacement as necessary
- Existing concrete terraces will be replaced with new concrete
- New storm sewer, new 10" sanitary sewer main & new 12" & 16" water main
- Upgrade Existing Street Lights
- Improve Streetscape
 - bump-outs at intersections, colored crosswalks, new bike racks, bus boarding pads

Proposed Roadway Improvements

*TYPICAL SECTION
BUTLER TO BLAIR*

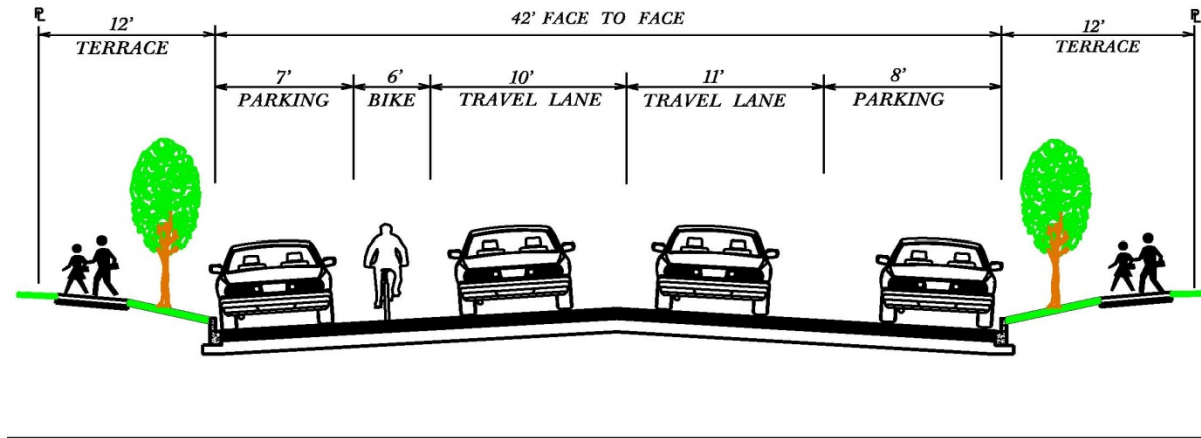


*TYPICAL SECTION
BLAIR TO BREARLY*

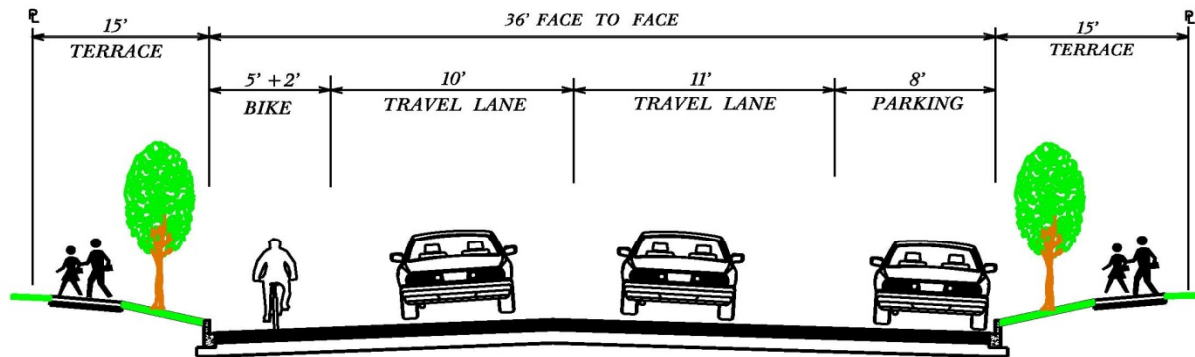


Proposed Roadway Improvements

*TYPICAL SECTION
BREARLY TO FEW*

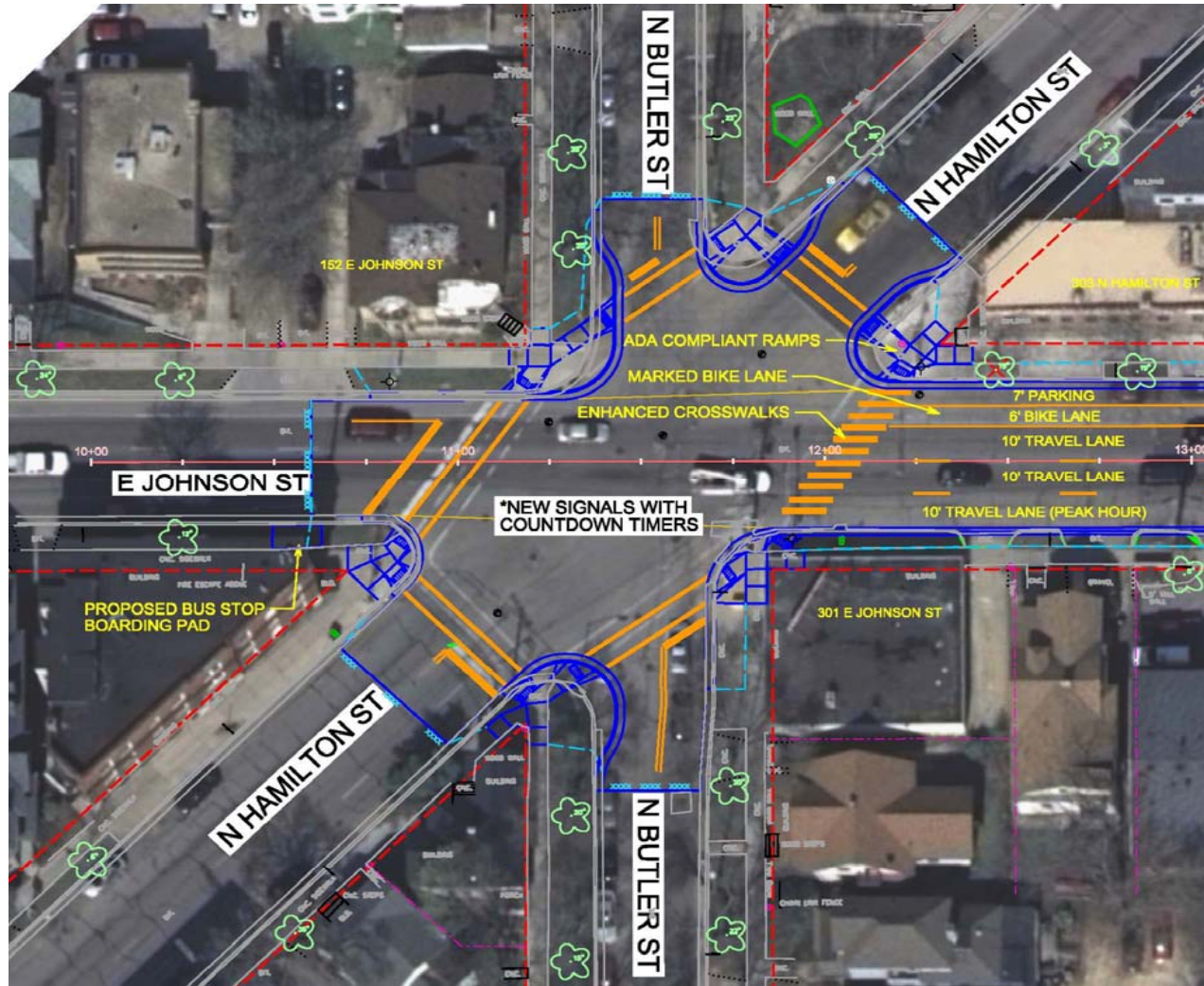


*TYPICAL SECTION
FEW TO BALDWIN*



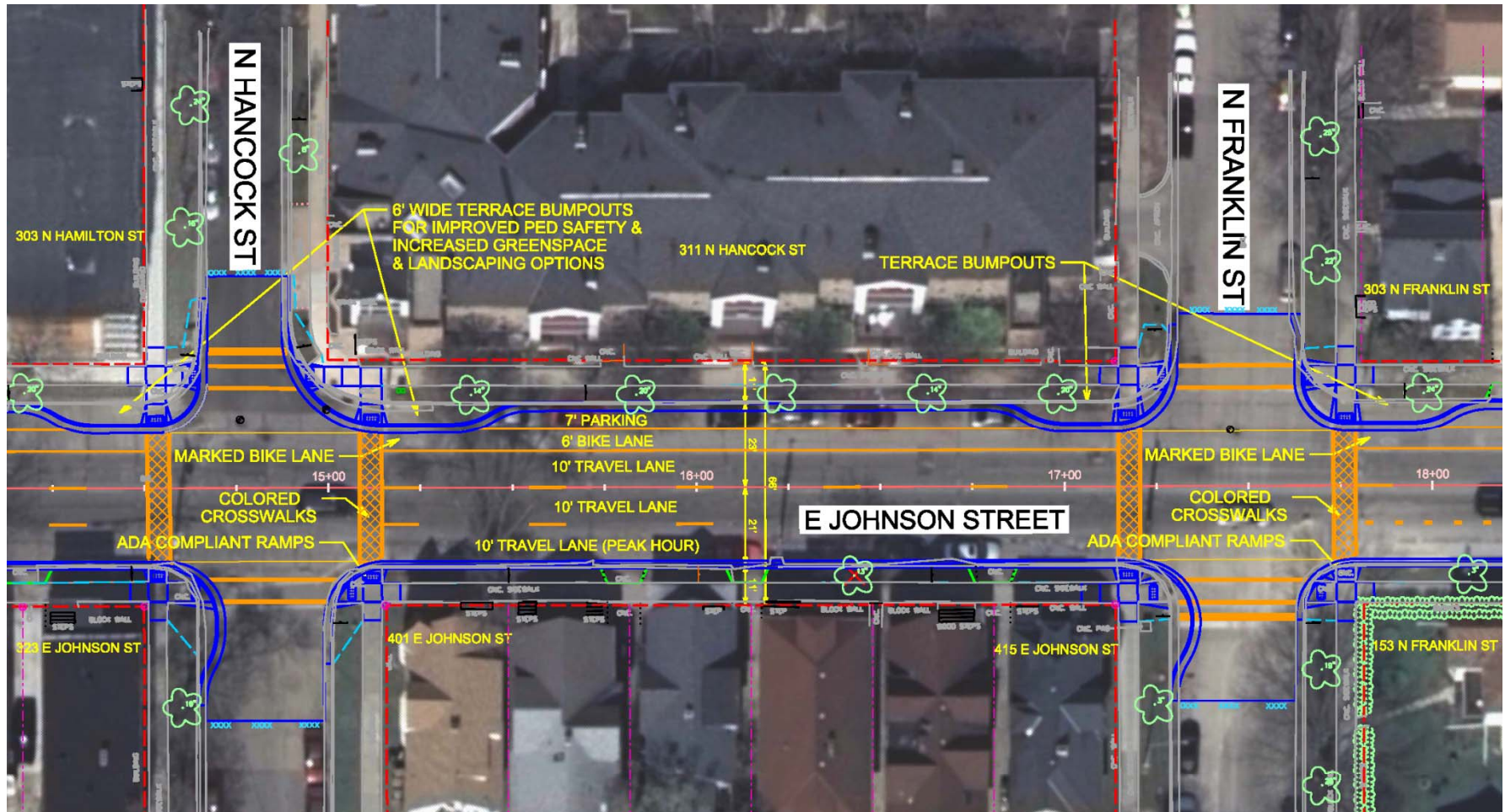
Proposed Roadway Improvements

- Signalized Intersection (N Butler Street)



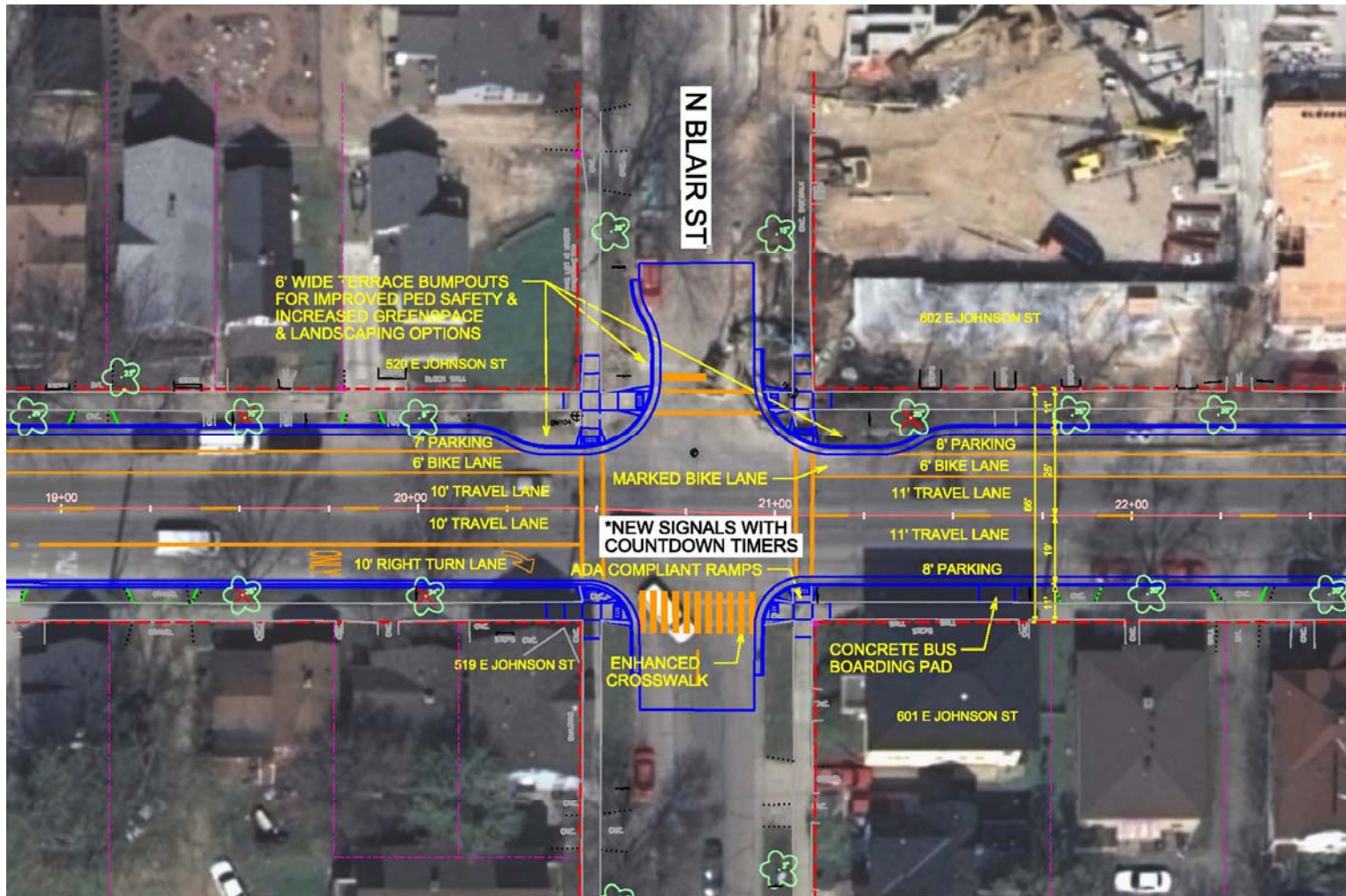
Proposed Roadway Improvements

- Non-Signalized Intersections (N Hancock & N Franklin Streets)



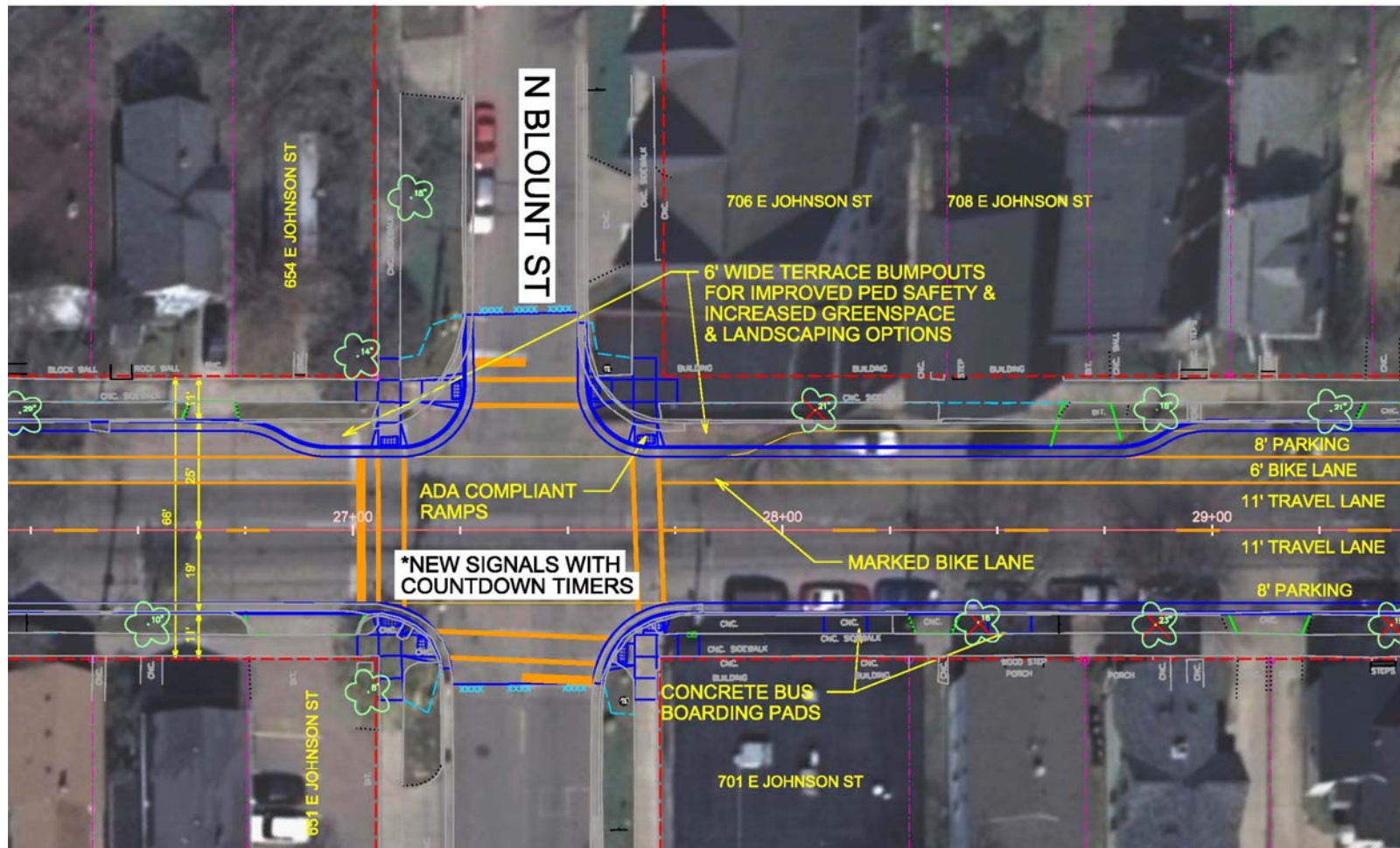
Proposed Roadway Improvements

- Signalized Intersection (N Blair Street)



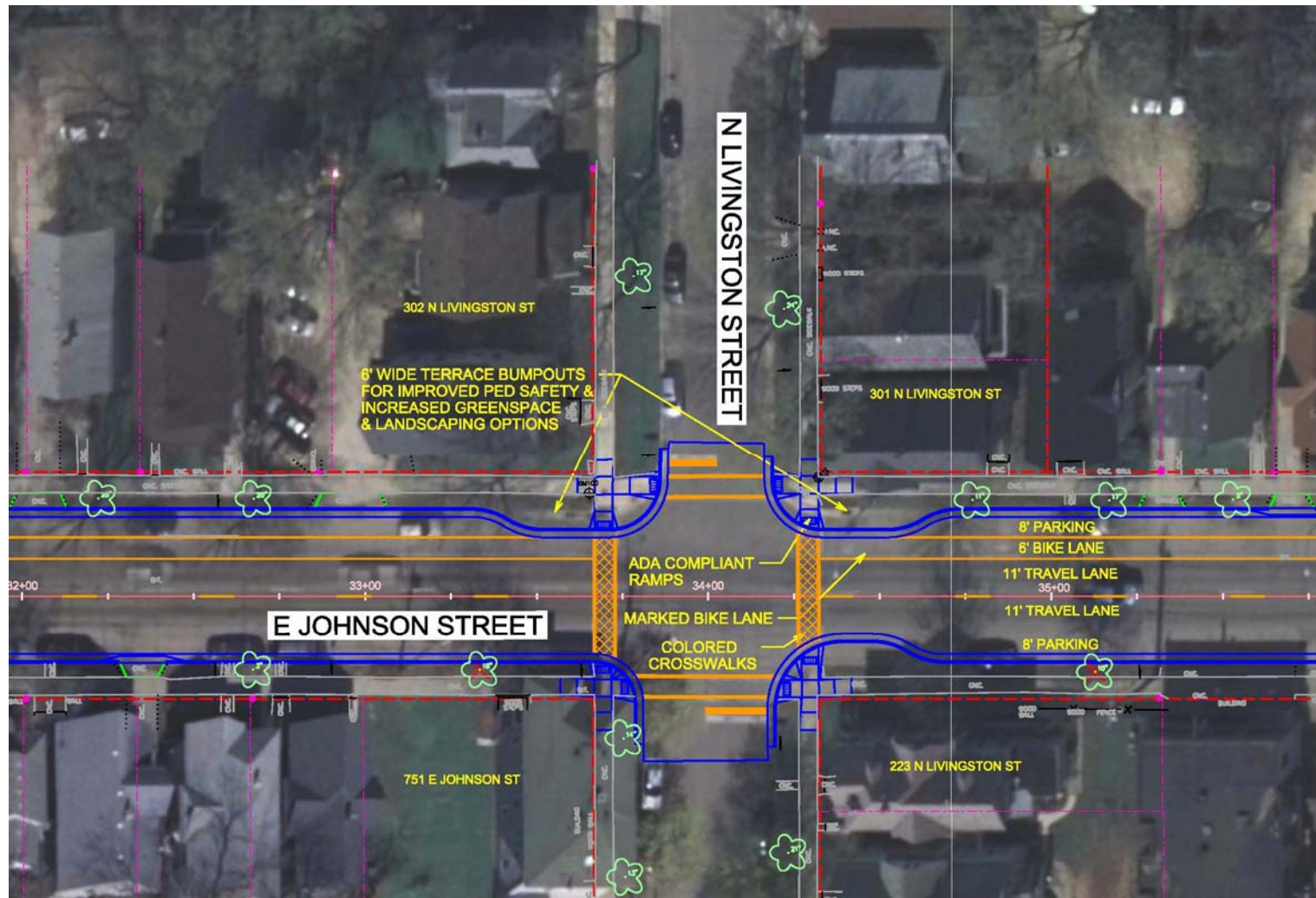
Proposed Roadway Improvements

- Signalized Intersection (N Blount Street)



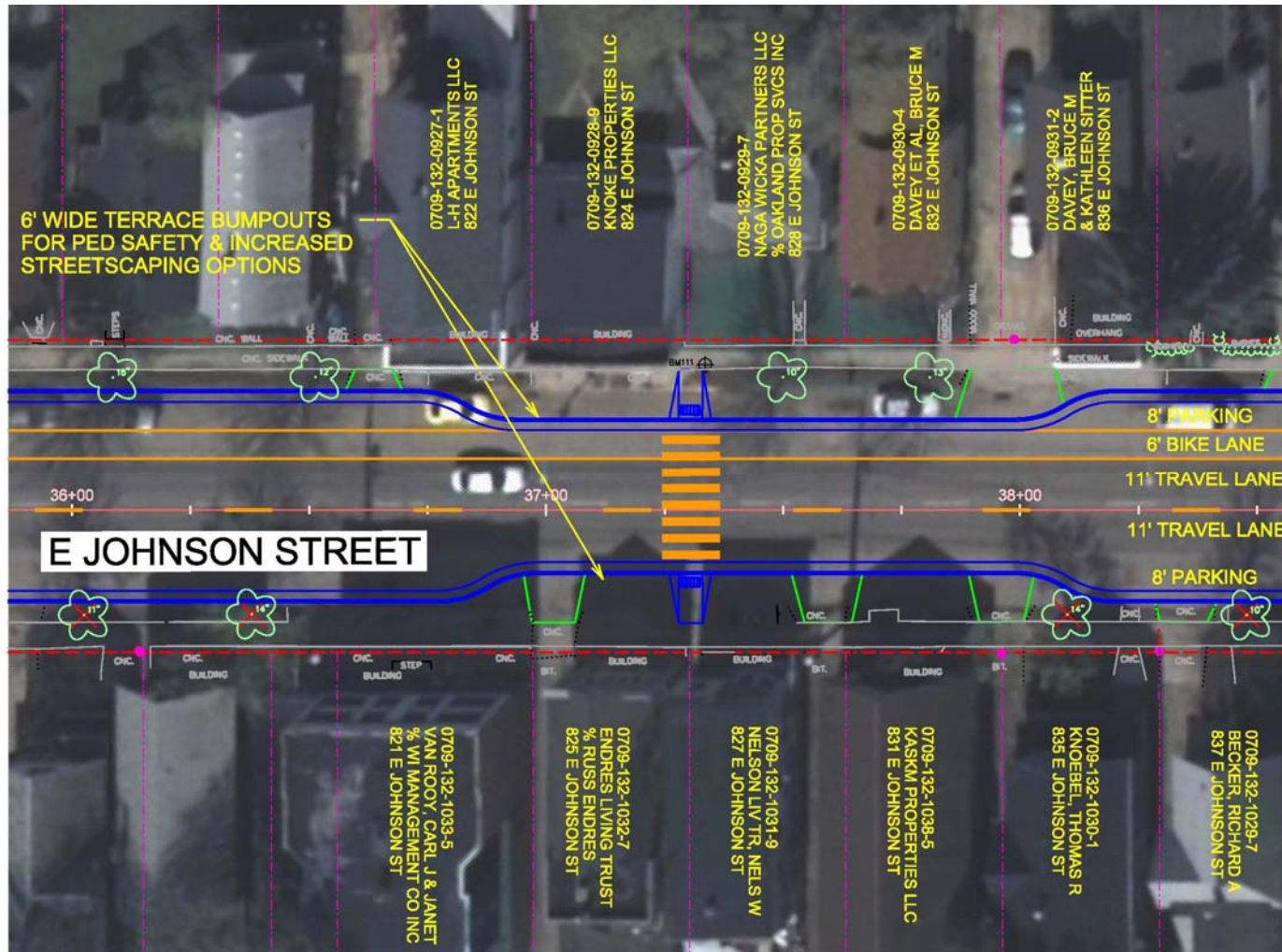
Proposed Roadway Improvements

- Non-Signalized Intersection (N Livingston Street)



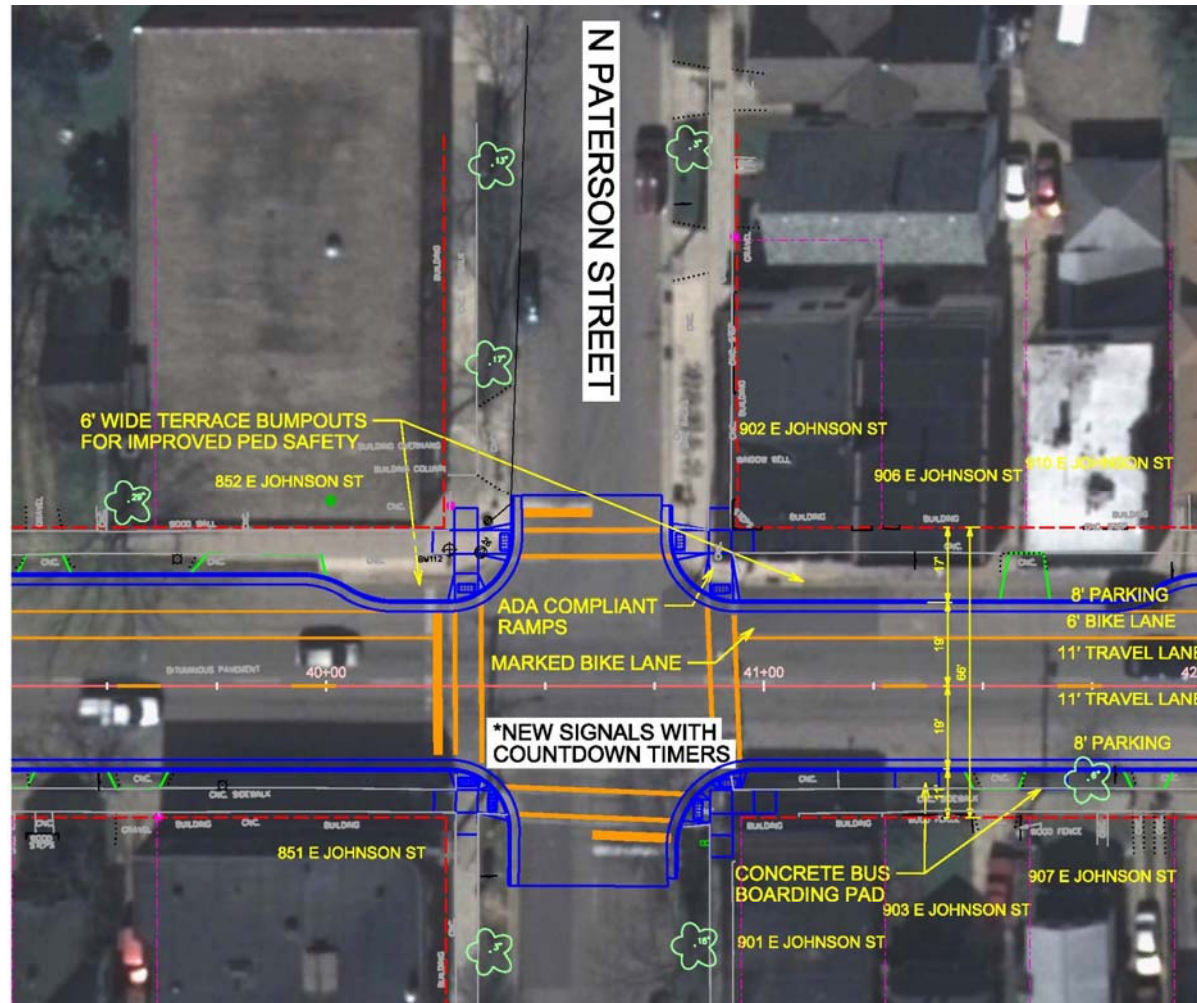
Proposed Roadway Improvements

- Proposed Mid-Block Crossing (800 Block)



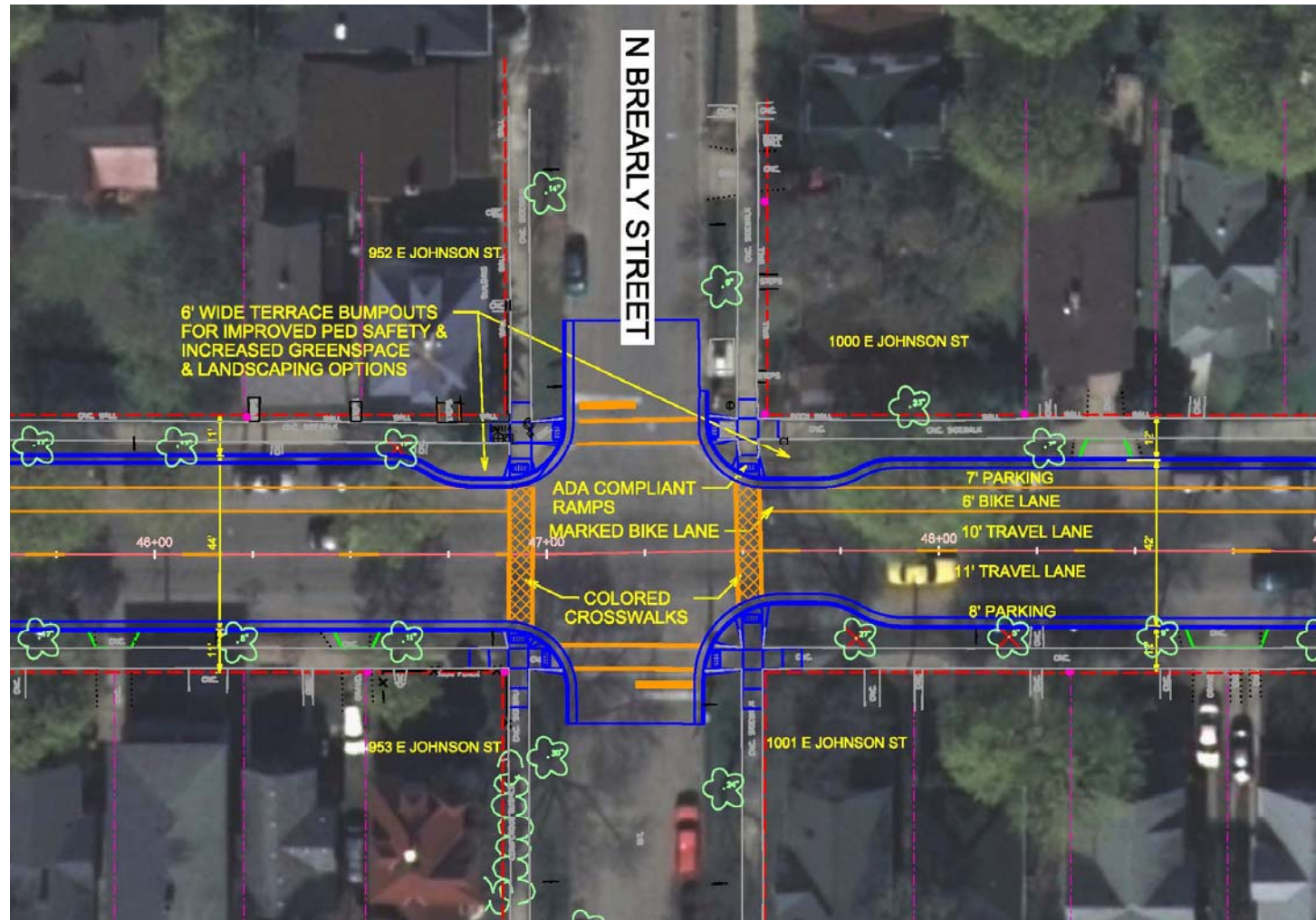
Proposed Roadway Improvements

- Signalized Intersection (N Paterson Street)



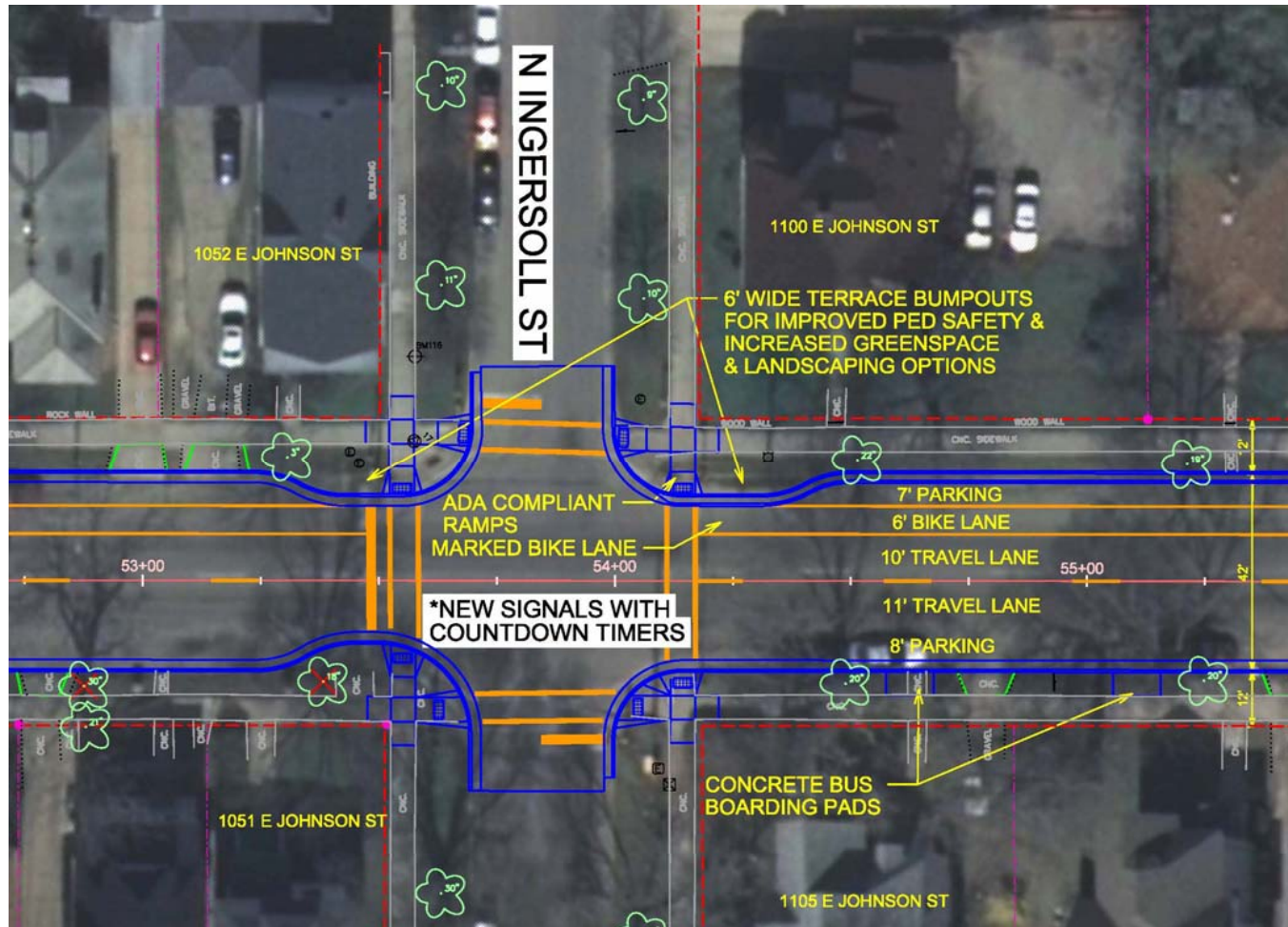
Proposed Roadway Improvements

- Non-Signalized Intersection (N Brearly Street)



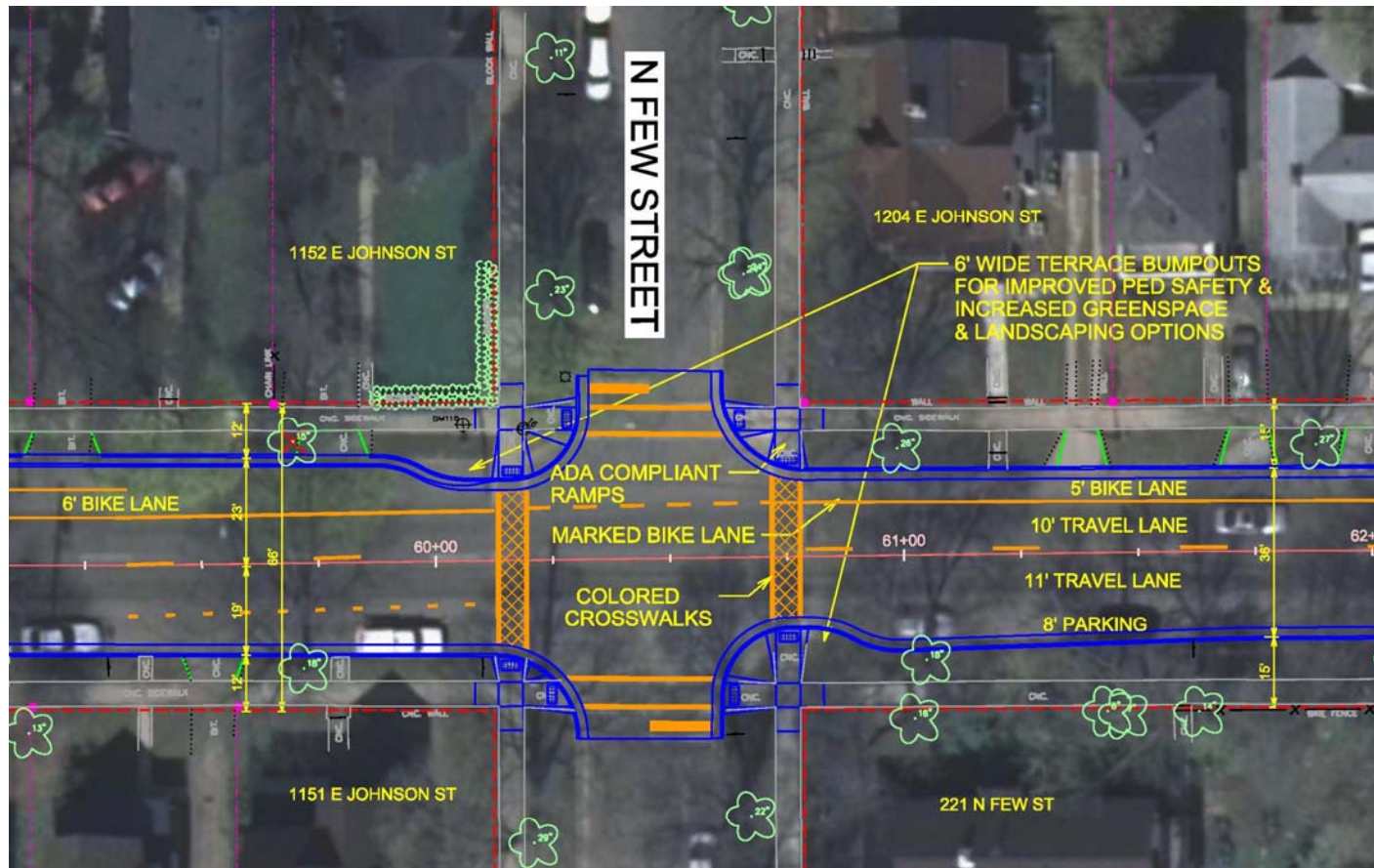
Proposed Roadway Improvements

- Signalized Intersection (N Ingersoll Street)



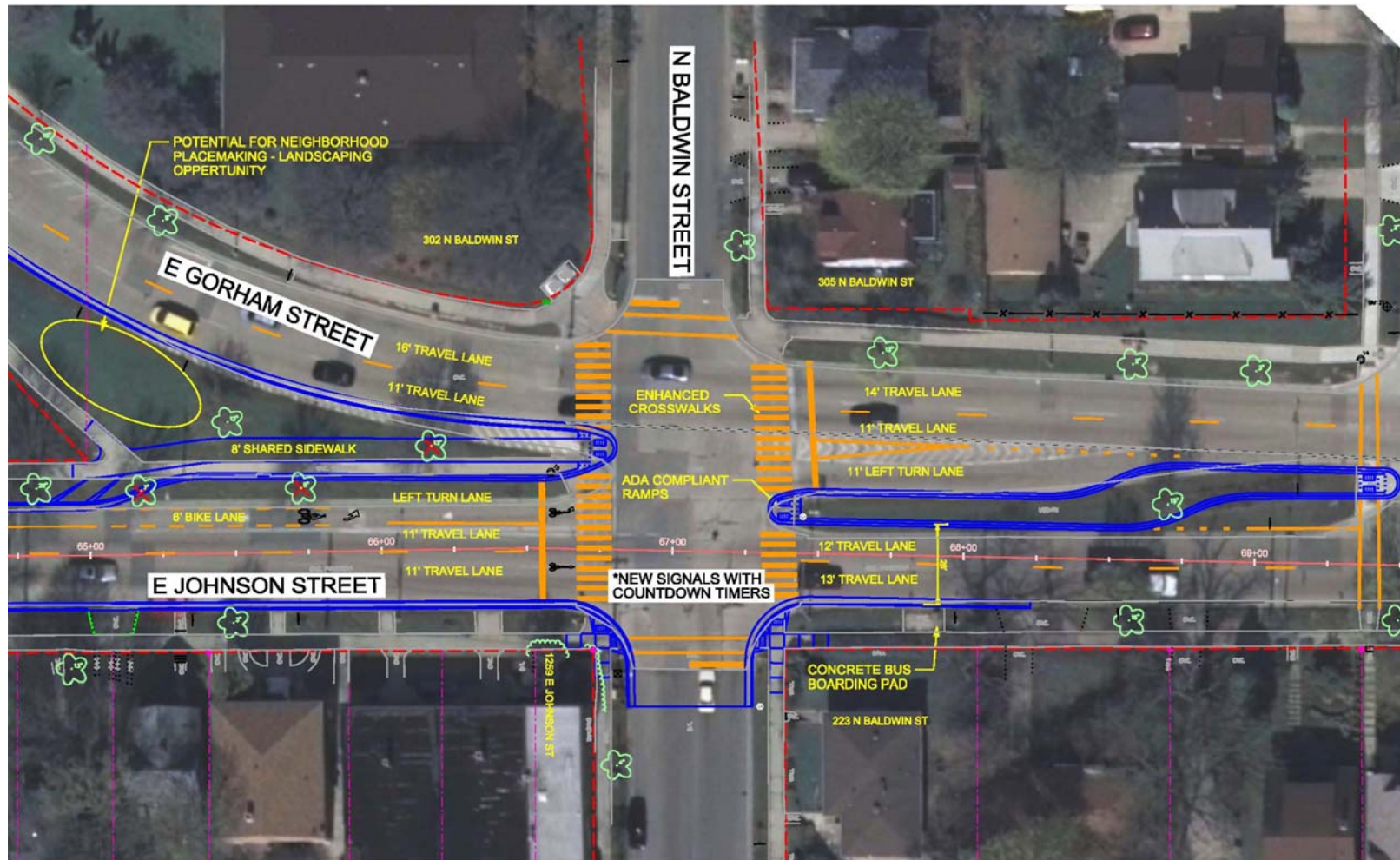
Proposed Roadway Improvements

- Non-Signalized Intersection (N Few Street)



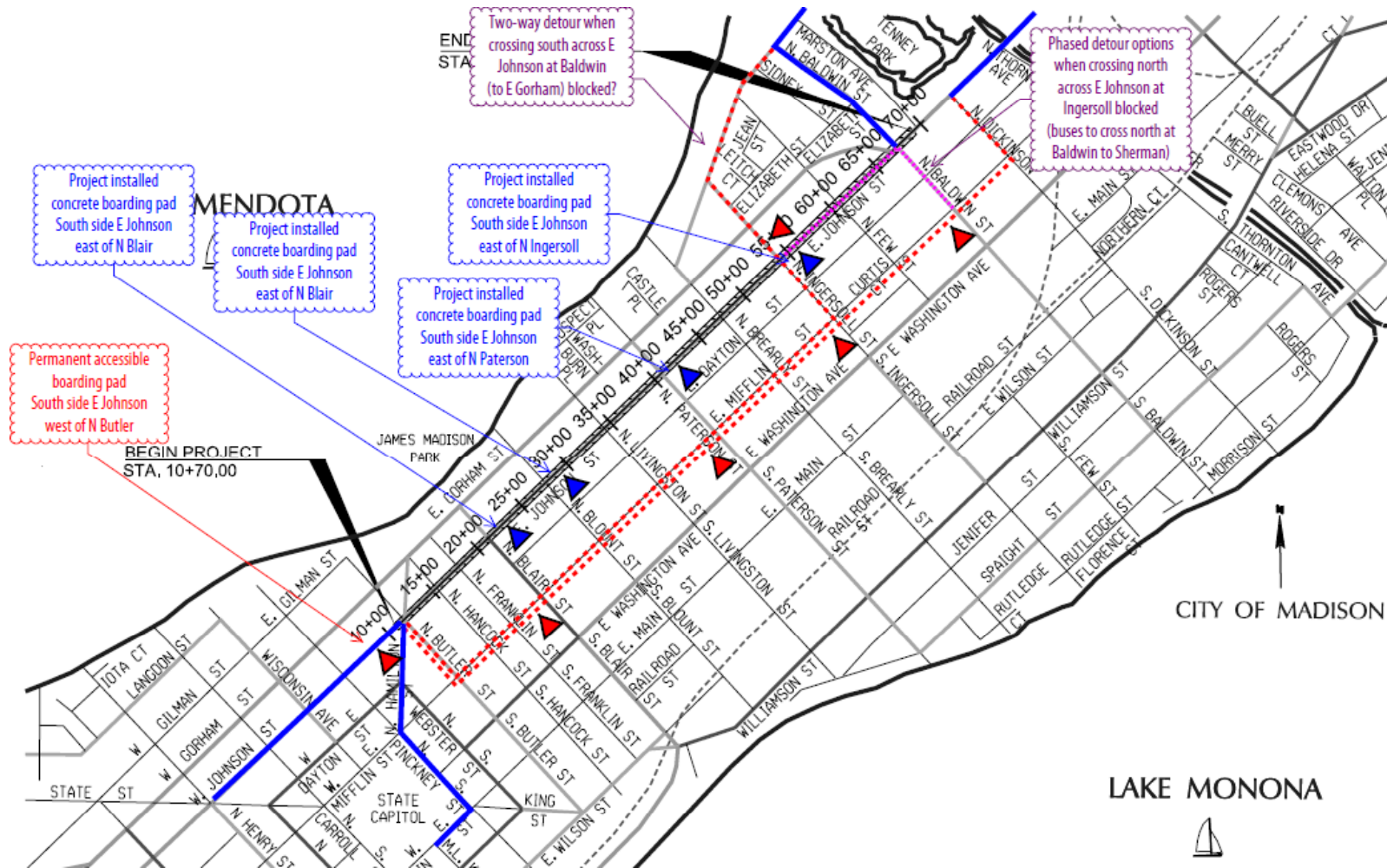
Proposed Roadway Improvements

- Signalized Intersection (N Baldwin Street)



Proposed Roadway Improvements

- Proposed Metro Bus Stop Locations



Streetscape Elements:

- Curb Bumpouts at Intersections
- Enhanced Crosswalks
- Undergrounding Electrical Lines (Butler to Blair)
- Street Trees
- Street Lights
- Marked Bike Lane, Bike Racks/Parking
- Landscaping Opportunities
- Other: Yield to Pedestrian Signs, Banners, Sidewalk Cafes



Streetscape Elements:

- Curb Bumpouts at Intersections



Streetscape Elements:

- Colored Crosswalks
- Continental Markings



Streetscape Elements:

Undergrounding Electrical Lines

- City is Proposing Undergrounding overhead lines from N Butler Street to N Blair Street
- City is Proposing to install additional underground Conduit for future undergrounding from N Blair Street to N Baldwin Street
- ATC and MG&E are installing new underground conduits from N Butler Street to N Livingston Street

Streetscape Elements:

Street Trees

- 34 planned tree removals
- City Forestry will replant trees in all available spaces after completion of project
- Increase Species Diversity



Streetscape Elements:

Street Trees:

- 142 total trees
- 34 planned removals
- 9 trees to be evaluated during construction
- 1 tree to be relocated

JOHNSON STREET RECONSTRUCTION TREE TOTALS
N BUTLER ST TO N BALDWIN ST

1/31/2013

	# Trees	% - Initial Inventory	# Removals - construction	# Removals -condition	# Removals - line pruning	# - Relocate
ASH	82	58%	6	5	12	
MAPLE	25	18%	2	3	2	
HONEYLOCUST	18	13%	1	1		
LINDEN	8	6%	1			
LILAC	2	1%				
ORNAMENTAL PEAR	2	1%				
HYBRID ELM	2	1%				1
SERVICEBERRY	1	1%				
ALIANTHUS	1	1%	1			
GINKGO	1	1%				
TOTALS	142	100%	11	9	14	1
Notes:						
◇ Removal - Construction: trees that will be removed due to the design or construction process.						
◇ Removal - Condition: trees that will be removed due to poor health or structural defects.						
◇ Removal - Line pruning: trees that will be removed because more than 50% of canopy will be removed after Forestry prunes for street clearance in 2014, and MGE prunes for power line clearance (scheduled for 2015).						
◇ 10 trees are designated as 'possible removals' due to excavation that is predicted to be very close to the tree. These trees will be re-evaluated at the time of construction.						
◇ One recently planted tree will be relocated in the spring of 2013 due to future conflict with traffic signal.						

Streetscape Elements: Street Lights

- Area street lights will be replaced with a combination of mid-Block ped scale lights and area lights @ intersections
- Property Owners share in costs



Streetscape Elements:

Bike Racks and Bike Parking

- Proposing to replace existing bike racks and add additional bike parking where space is available in Commercial District



Streetscape Elements: Landscaping Opportunities

- Potential Landscaping Opportunities
- Bumpout Areas at Blair Street and Brearly St
- In Median at Gorham St
- Constructed by City
Maintained by
Neighborhood Association



Streetscape Elements:

Yield to Pedestrian Signs

- Proposed at Non-Signalized Intersections



Construction

Bike Detour



Construction

Bus Detour



Project Funding & Assessment Policy

The project is funded by Federal and Local Sources

- Estimated Project Costs:
 - Roadway Items \$5.8 Million (50% Federal/50% Local)
 - Sanitary sewer \$2.5 Million (100% Local Funding)
 - Water main \$3.3 Million (100% Local Funding)
 - Undergrounding Electrical \$1.5 Million (100% Local Funding)

- Total Project Estimate: \$13.1 Million

Project Funding & Assessment Policy

Assessment Policy for Roadway Items:

(Curb & Gutter, Drive Aprons, Sidewalk, Private Storm Sewer, Street Lighting)

- The Local Share of roadway items is further divided between the City and Adjacent Property Owners per City Assessment Policy. Property Owner and City Share Costs 50% / 50% for Concrete Items (Concrete Curb, Drive Aprons, Sidewalk & Terrace Concrete)
- The local share (50%) of street lighting costs and any private storm sewer connections are assessed to the adjacent property owners

Local Utilities: (Sanitary Sewer and Water Main)

- Funding for Local Utilities is 100% by Local Sources
- City Assessment Policy for Sanitary Sewer Laterals is 75% City / 25% Property Owner. Sanitary Main is Funded 100% by City
- Water Main is funded 100% by City

Questions or Comments

Project Contacts:

Glen Yoerger P.E.
City of Madison Engineering
261-9177
gyoerger@cityofmadison.com

Scott Langer P.E.
City Traffic Engineering
266-5987
slanger@cityofmadison.com

How to get More Information:

Website: <http://www.cityofmadison.com/engineering/EJohnson/>

My Madison Account: <https://my.cityofmadison.com/>

