



Note: 1" = 100'

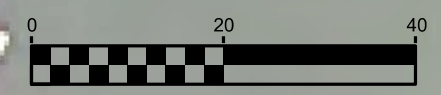
City of Madison, WI - GIS/Mapping data

Printed By: enses

Disclaimer: The City makes no representation about the accuracy of these records and shall not be liable for any damages

EROSION CONTROL NOTES:

- 1) EROSION CONTROL MEASURES SHALL BE IN PLACE PRIOR TO ANY OTHER CONSTRUCTION ACTIVITIES.
- 2) THE CONTRACTOR IS RESPONSIBLE FOR THE CONSTRUCTION AND MAINTENANCE OF ALL EROSION CONTROL MEASURES, UNTIL FINAL ACCEPTANCE BY THE CITY OF MADISON.
- 3) THE CONTRACTOR SHALL INSTALL AND MAINTAIN EROSION CONTROL MEASURES IN ACCORDANCE WITH THE WDNR SOC STANDARDS AND CITY OF MADISON STANDARD SPECIFICATIONS.
- 4) THE CONTRACTOR SHALL PROVIDE STREET SWEEPING AS NEEDED ON A DAILY BASIS TO KEEP TRACKING TO A MINIMUM.
- 5) NO MATERIAL SHALL BE STORED ON SITE.
- 6) DREDGED MATERIAL SHALL BE HAULED IN WATER TIGHT TRUCKS.
- 7) SHORELINE DISTURBED DURING DREDGING ACTIVITIES SHALL BE RESTORED WITH SEED AND EROSION CONTROL MATTING.
- 8) IF NECESSARY, A TRACKING PAD WILL BE INSTALLED BETWEEN THE BACK OF CURB AND SHORELINE.



PLOT SCALE: _____

PLOT NAME: _____

REV. DATE: _____

ORIGINATOR: CITY OF MADISON, STREETS DIVISION

PLOT SCALE: _____

PLOT NAME: _____

REV. DATE: _____

ORIGINATOR: CITY OF MADISON, STREETS DIVISION

