



REAL ESTATE INVESTMENTS
103 N. HAMILTON STREET, MADISON WI 53703
608-255-3976/FAX 255-1132
www.mcgrathprojects.com

September 1, 2006

Mr. Al Martin
City of Madison
Department of Planning and Development
215 Martin Luther King, Jr. Boulevard
Madison, WI 53701

RE: UNION CORNERS – Supplemental Submittal

Dear Al,

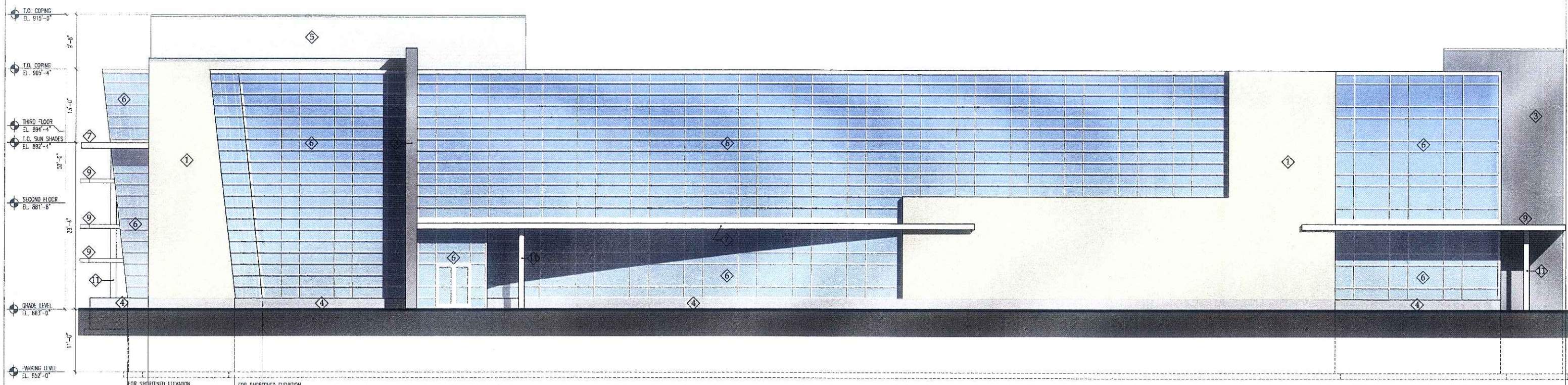
Enclosed please fourteen copies of the colored building elevations. These drawings replace the elevations included in our August 30th submittal – the color reproduction was not accurate. Sorry for the confusion.

Sincerely,

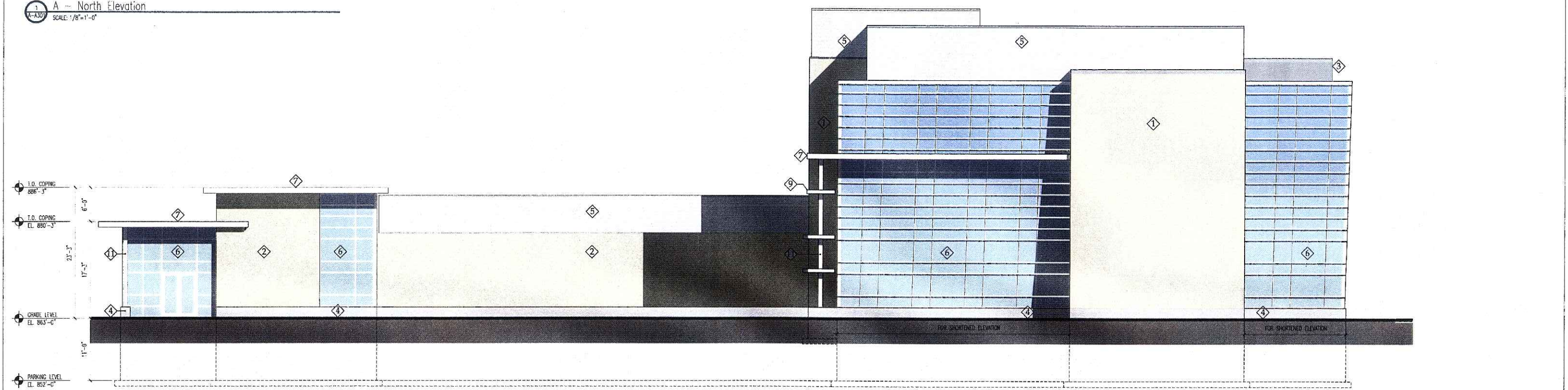
McGRATH ASSOCIATES, INC

A handwritten signature in black ink, appearing to read "Lance T. McGrath".

Lance T. McGrath, P.E.
President



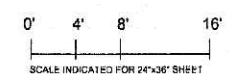
1 A - North Elevation
SCALE: 1/8"=1'-0"



2 A - East Elevation
SCALE: 1/8"=1'-0"

Exterior Material Legend -- typical at all elevations

- 1--Brick 1 Smooth Face Running bond pattern
- 2--Brick 1 Velour Face Running bond pattern
- 3--Board Formed Site Cast Concrete
- 4--Sandblasted Site Cast Concrete
- 5--Prefinished Corrugated Metal Panel
- 6--Insulated Clear Glazing in aluminum frame
- 7--Prefinished Metal Fascia and canopy
- 8--Metal Louver
- 9--Perforated Metal Sunshade w/ Prefinished Mtl. Fascia
- 10--Horizontal Fabric Sunshade
- 11--Painted Metal



MCGRATH
Associates

UNION
CORNERS

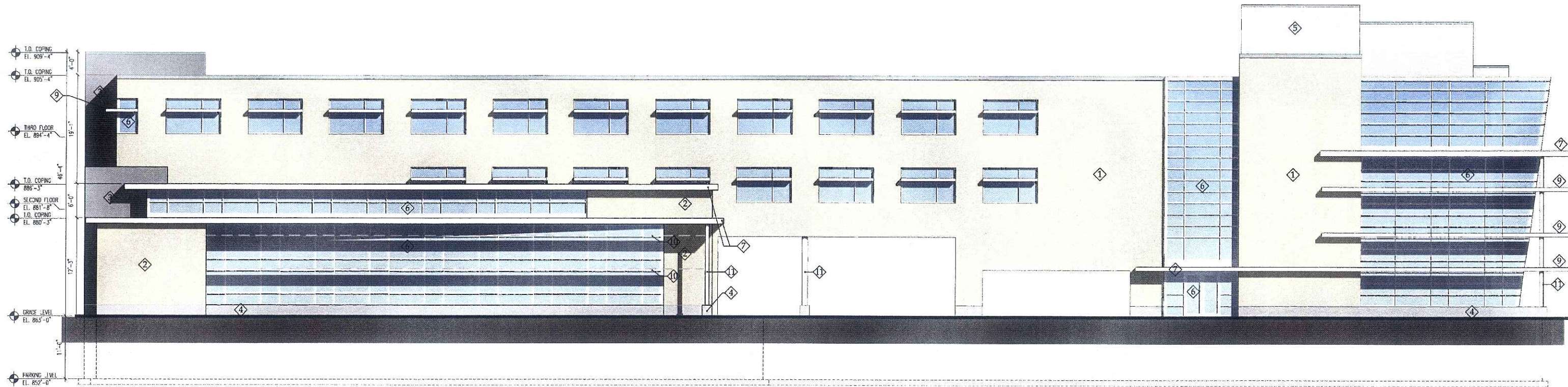
SUBMITTAL DATE:
0830 | 2006

URBAN DESIGN
COMMISSION

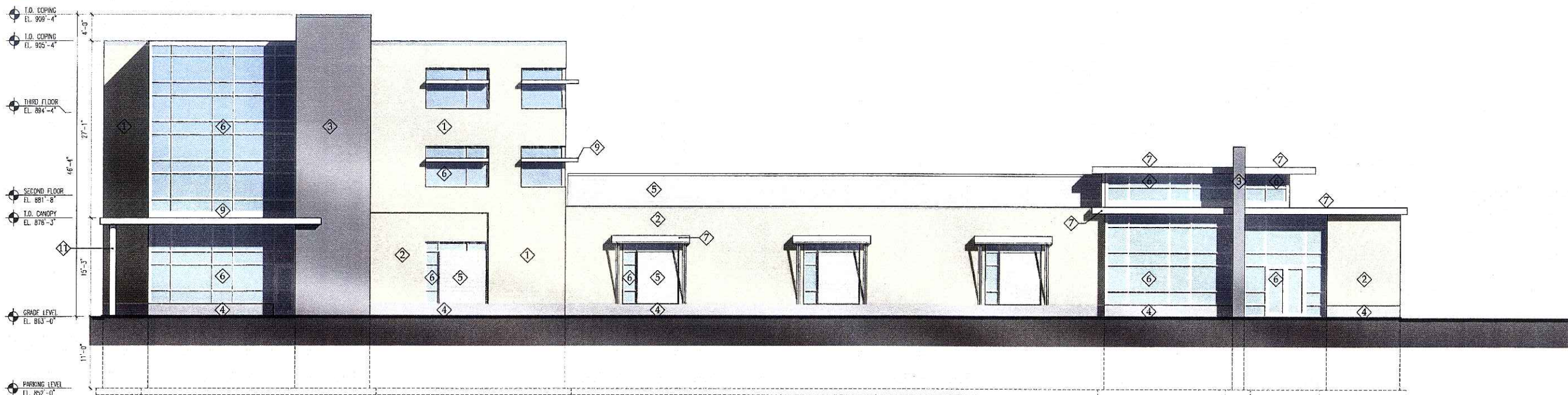
SHEET TITLE:
A - NORTH AND
EAST ELEVATIONS

SHEET NUMBER:
A - A301

EngbergAnderson
Design Partnership, Inc.
MADISON • MILWAUKEE • www.eddp.com
1301 Pickney St., Madison, WI 53705 • 761-628-0100



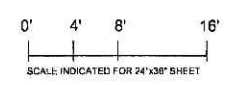
1 A - South Elevation
SCALE: 1/8"=1'-0"



2 A - West Elevation
SCALE: 1/8"=1'-0"

Exterior Material Legend -- typical at all elevations

- 1--Brick 1 Smooth Face Running bond pattern
- 2--Brick 1 Velour Face Running bond pattern
- 3--Board Formed Site Cast Concrete
- 4--Sandblasted Site Cast Concrete
- 5--Prefinished Corrugated Metal Panel
- 6--Insulated Clear Glazing in aluminum frame
- 7--Prefinished Metal Fascia and canopy
- 8--Metal Louver
- 9--Perforated Metal Sunshade w/ Prefinished Mtl. Fascia
- 10--Horizontal Fabric Sunshade
- 11--Painted Metal





MCGRATH
Associates



**UNION
CORNERS**

SUBMITTAL DATE:
0830 | 2008

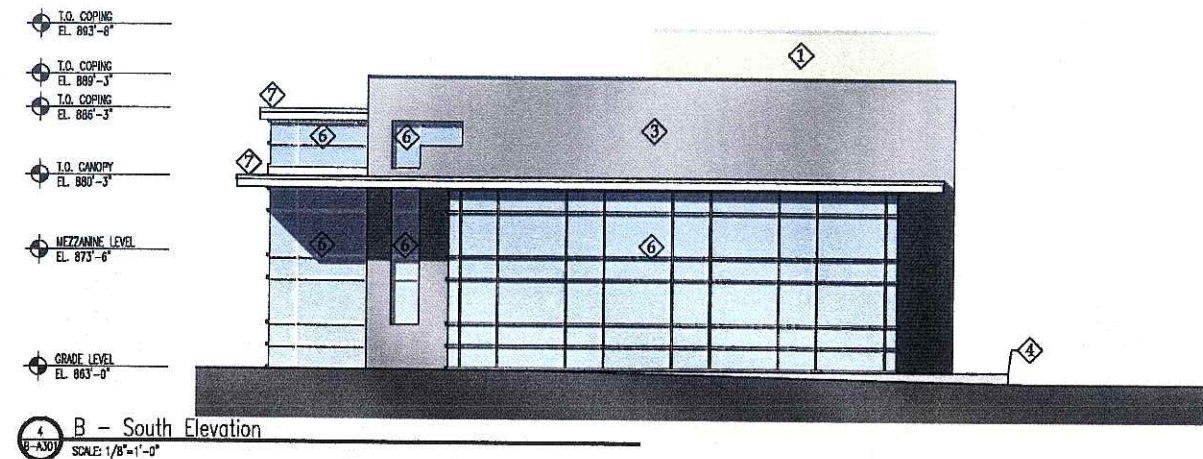
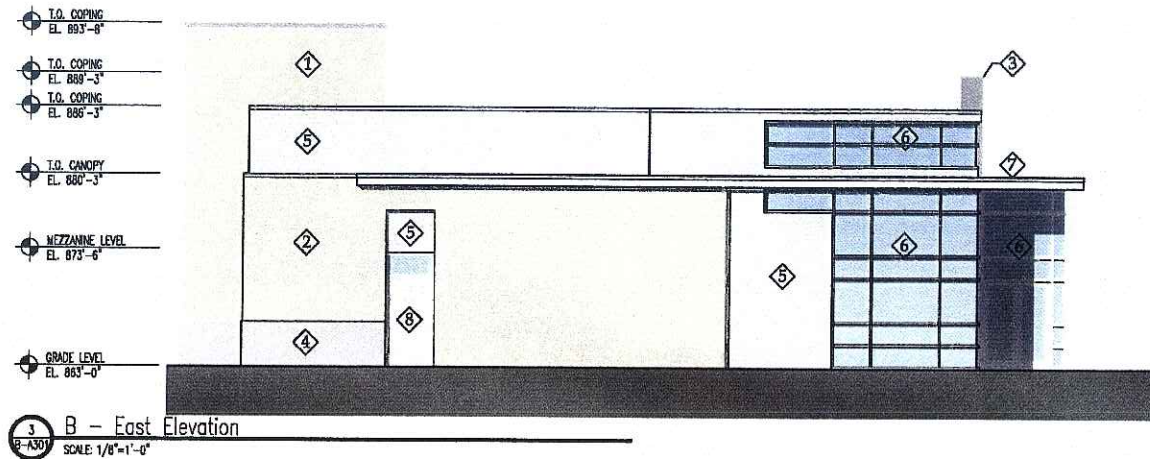
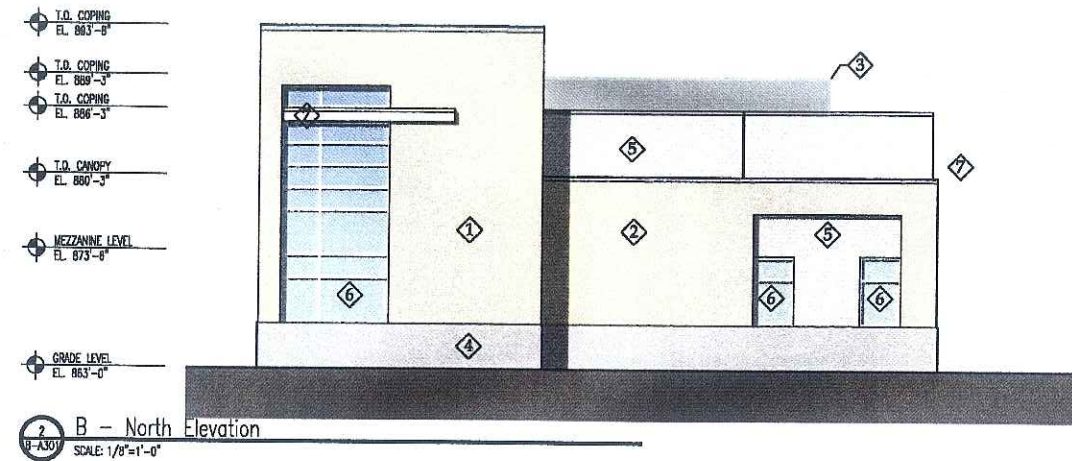
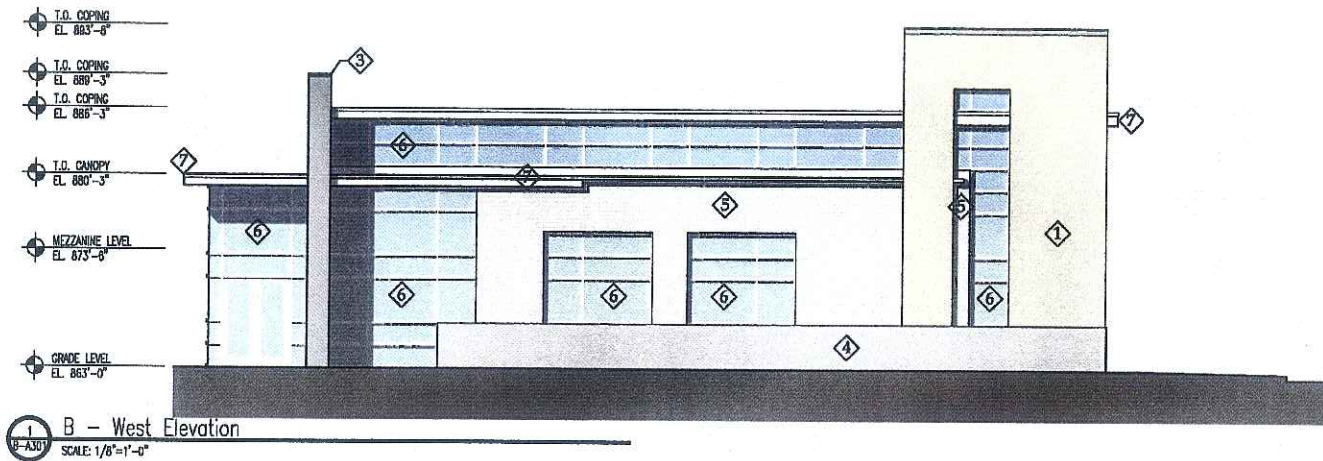
URBAN DESIGN
COMMISSION

SHEET TITLE:
**A - SOUTH AND
WEST ELEVATIONS**



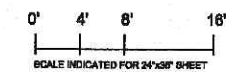
**Engberg Anderson
Design Partnership, Inc.**
MADISON • MILWAUKEE • www.eadp.com
1 N. Pinckney St., Madison, WI 53703 • Ph. 608-259-0100

SHEET NUMBER:
A - A302



Exterior Material Legend -- typical at all elevations

- 1-Brick 1 Smooth Face Running bond pattern
- 2-Brick 1 Velour Face Running bond pattern
- 3-Board Formed Site Cast Concrete
- 4-Sandblasted Site Cast Concrete
- 5-Prefinished Corrugated Metal Panel
- 6-Insulated Clear Glazing in aluminum frame
- 7-Prefinished Metal Fascia and canopy
- 8-Hollow Metal Door in aluminum frame



MCGRATH
Associates



SUBMITTAL DATE:
0830 | 2008

URBAN DESIGN
COMMISSION

SHEET TITLE:
B - ELEVATIONS

EngbergAnderson
Design Partnership, Inc.
MADISON • MILWAUKEE • www.eadp.com
1317 Lincoln St., Madison, WI 53703 • 761.628.2200

SHEET NUMBER:
B - A301



Union Main Elevation



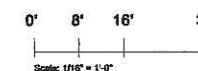
Union Green East Elevation



Garage Entry Elevation



Winnebago Street Elevation



URBAN DESIGN SUBMITTAL	
 McGRATH <i>Associates</i> REAL ESTATE INVESTMENTS	 UNION CORNERS
SUBMITTAL DATE: 0830 2006 URBAN DESIGN COMMISSION	SHEET TITLE: Building Elevations
SGN+A SIMONSON GERMANY NONEMAKER + ASSOCIATES, INC. 1190 West Druid Hills Drive, Suite T-65 Atlanta, Georgia 30329 Telephone (404) 634-4466	SHEET NUMBER: C-A104



1 NORTH ELEVATION G.1 (G.2 MIRRORED)
SCALE: 1/8"=1'-0"



2 EAST ELEVATION G.1 (G.2 MIRRORED)
SCALE: 1/8"=1'-0"

Exterior Material Legend -- typical at all elevations

- 1-Brick 1 in Running bond pattern
- 2-Brick 2 in Running bond pattern
- 3-Brick Soldier course
- 4-Precast concrete panel
- 5-Sandblasted site cast concrete
- 6-Prefinished metal trellis
- 7A-Aluminum or Aluminum clad single hung window system w/ insul. glazing
- 7B-Aluminum or Aluminum clad window system w/ insulated glazing
- 7C-Aluminum or Aluminum clad sliding door w/ insulated glazing
- 7D-Aluminum or Aluminum clad fixed window system w/ insulated glazing
- 8-Prefinished metal railing system
- 9-Flat seam metal panel system - coated copper
- 10-Prefinished metal canopy and fascia

MCGRATH
Associates



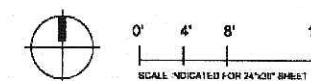
SUBMITTAL DATE:
0830 | 2006

URBAN DESIGN
COMMISSION

SHEET TITLE:
G.1 - NORTH AND EAST
ELEVATIONS
(G.2 MIRRORED)

SHEET NUMBER:

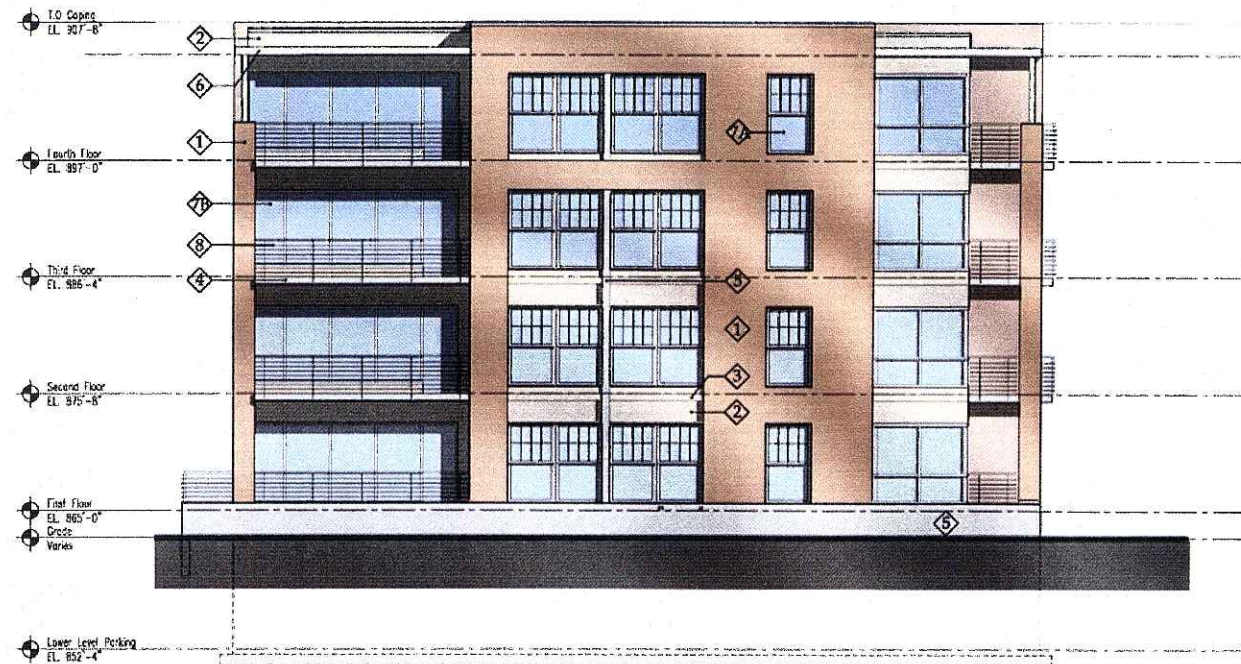
G - A301



EngbergAnderson
Design Partnership, Inc.
MADISON • MILWAUKEE • www.eadp.com
1 N. Parkway St., Madison, WI 53705 • Ph. 608-276-0500



1 G.1 SOUTH ELEVATION (G.2 MIRRORED)
SCALE: 1/8"=1'-0"



2 G.1 WEST ELEVATION (G.2 MIRRORED)
SCALE: 1/8"=1'-0"

Exterior Material Legend -- typical at all elevations

- 1--Brick 1 in Running bond pattern
- 2--Brick 2 in Running bond pattern
- 3--Brick Soldier course
- 4--Precast concrete panel
- 5--Sandblasted site castconcrete
- 6--Prefinished metal trellis
- 7A--Aluminum or Aluminum clad single hung window system w/ insul. glazing
- 7B--Aluminum or Aluminum clad window system w/ insulated glazing
- 7C--Aluminum or Aluminum clad sliding door w/ insulated glazing
- 7D--Aluminum or Aluminum clad fixed window system w/ insulated glazing
- 8--Prefinished metal railing system
- 9--Flat seam metal panel system - coated copper
- 10--Prefinished metal canopy and fascia

MCGRATH
Associates



SUBMITTAL DATE:
0830 | 2006

URBAN DESIGN
COMMISSION

SHEET TITLE:
G.1 - WEST AND SOUTH
ELEVATIONS
(G.2 MIRRORED)

EngbergAnderson
Design Partnership, Inc.
MADISON • MILWAUKEE • www.eadip.com
131 Parkway 9L, Madison, WI 53702 • PH 608.250.0190

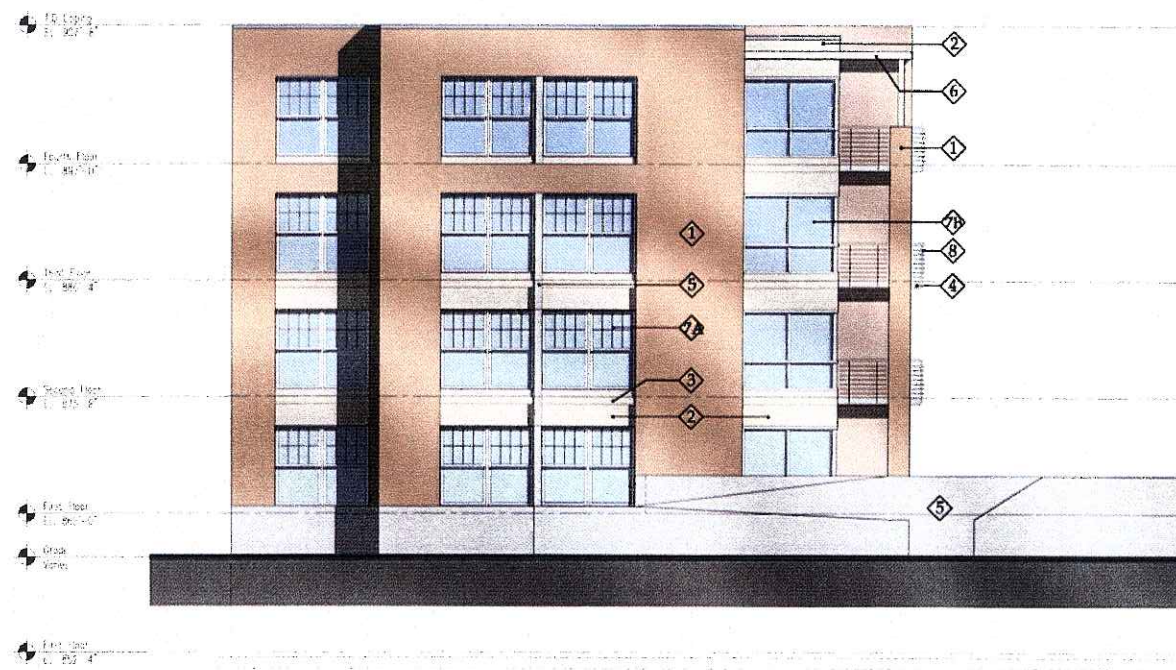
SHEET NUMBER:

G - A302





1 NORTH ELEVATION G.3
SCALE: 1/8"=1'-0"



2 EAST ELEVATION G.3
SCALE: 1/8"=1'-0"

Exterior Material Legend -- typical at all elevations

- 1--Brick 1 in Running bond pattern
- 2--Brick 2 in Running bond pattern
- 3--Brick Soldier course
- 4--Precast concrete panel
- 5--Sandblasted site castconcrete
- 6--Prefinished metal trellis
- 7A--Aluminum or Aluminum clad single hung window system w/ insul. glazing
- 7B--Aluminum or Aluminum clad window system w/ insulated glazing
- 7C--Aluminum or Aluminum clad sliding door w/ insulated glazing
- 7D--Aluminum or Aluminum clad fixed window system w/ insulated glazing
- 8--Prefinished metal railing system
- 9--Flat seam metal panel system - coated copper
- 10--Prefinished metal canopy and fascia



SUBMITTAL DATE:
0830 | 2006

URBAN DESIGN
COMMISSION

SHEET TITLE:
G.3 - NORTH AND
EAST ELEVATIONS

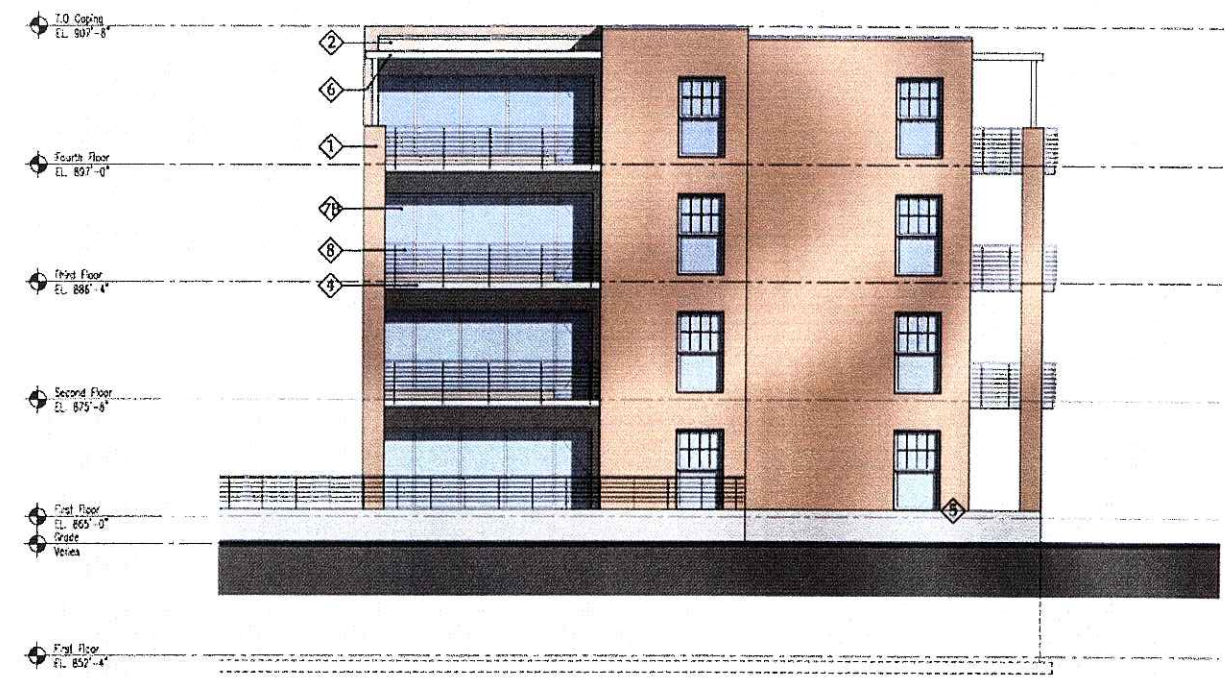


SHEET NUMBER:
G - A303

MADISON • MILWAUKEE • www.eadp.com
1 N. Parkway Dr., Madison, WI 53705 • TEL: 608-259-0020



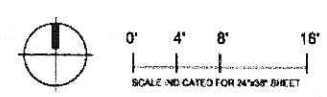
1 SOUTH ELEVATION G.3
SCALE: 1/8"=1'-0"



2 WEST ELEVATION G.3
SCALE: 1/8"=1'-0"

Exterior Material Legend -- typical at all elevations

- 1-Brick 1 in Running bond pattern
- 2-Brick 2 in Running bond pattern
- 3-Brick Soldier course
- 4-Precast concrete panel
- 5-Sandblasted site castconcrete
- 6-Prefinished metal trellis
- 7A-Aluminum or Aluminum clad single hung window system w/ insul. glazing
- 7B-Aluminum or Aluminum clad window system w/ insulated glazing
- 7C-Aluminum or Aluminum clad sliding door w/ insulated glazing
- 7D-Aluminum or Aluminum clad fixed window system w/ insulated glazing
- 8-Prefinished metal railing system
- 9-Flat seam metal panel system - coated copper
- 10-Prefinished metal canopy and fascia





MCGRATH
Associates



UNION
CORNERS

SUBMITTAL DATE:
0830 | 2006

URBAN DESIGN
COMMISSION

SHEET TITLE:
G.3 - SOUTH AND
WEST ELEVATIONS






Engberg Anderson
Design Partnership, Inc.
MADISON • MILWAUKEE • www.eadp.com
1 N. Tullyney St., Madison, WI 53705 • PH: 608.226.0520

SHEET NUMBER:
G - A304



1 WINNEBAGO STREET ELEVATION
 A204 1/16" = 1'-0"

SIP SUBMITTAL	
 MCGRATH <i>Associates</i> REAL ESTATE INVESTMENTS	 UNION CORNERS
SUBMITTAL DATE: 0830 2006	URBAN DESIGN COMMISSION
SHEET TITLE: WINNEBAGO STREET ELEVATION	
 ARCHITECT: ARCHITECTURE CSG, INC. <small>107 N. HAMILTON STREET MADISON, WI 53703 608/251-4402</small>	SHEET NUMBER: FB-A204