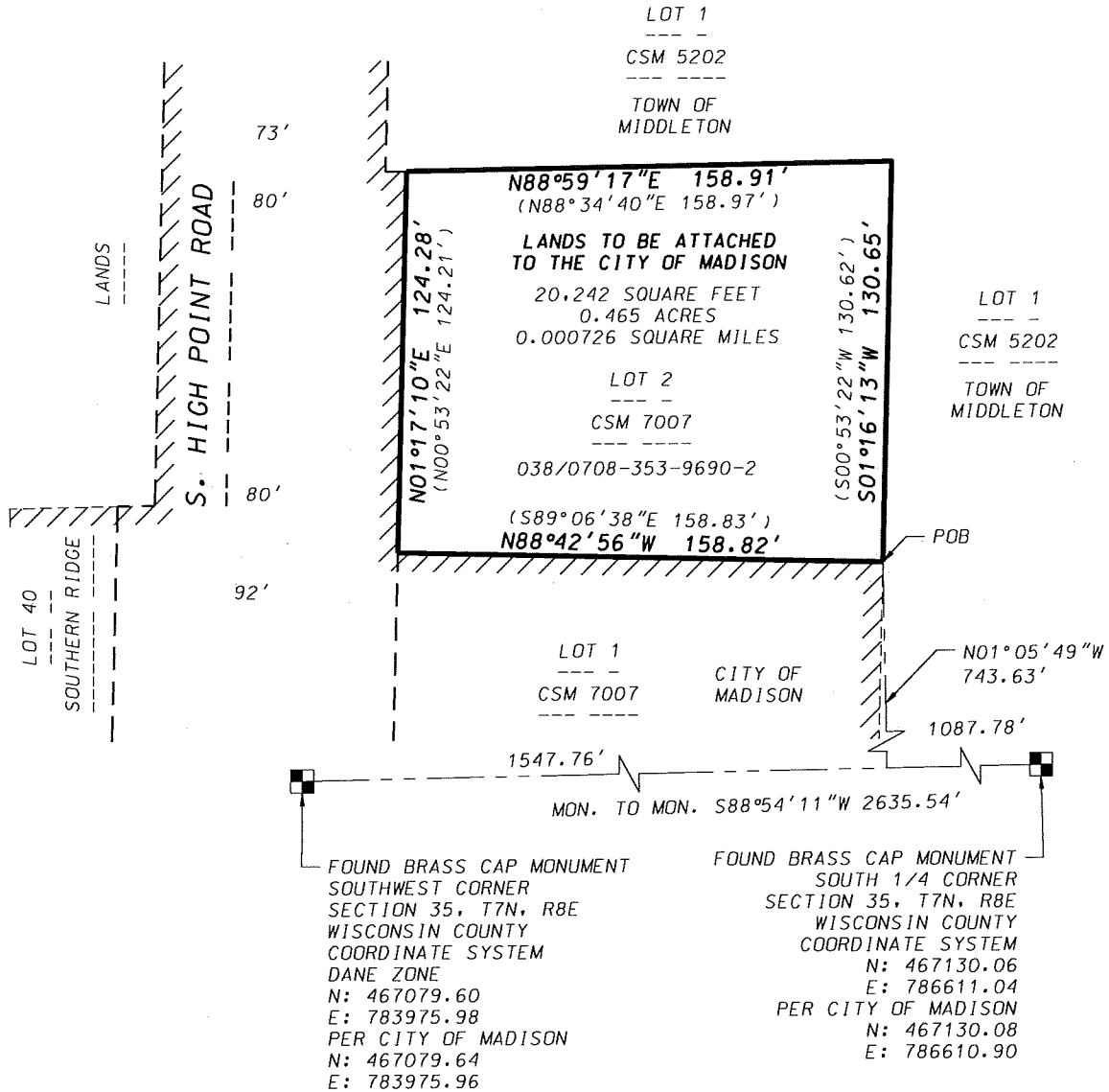


EXHIBIT "II"

MAP OF LANDS TO BE ATTACHED TO THE CITY OF MADISON SCALE MAP



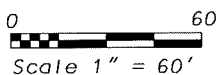
LEGEND

() RECORDED AS INFORMATION

EXISTING CORPORATE LIMITS OF THE CITY OF MADISON



GRID NORTH
WISCONSIN COUNTY COORDINATE SYSTEM (DANE ZONE)
THE SOUTH LINE OF THE SW1/4 OF SECTION 35, T7N, R8E BEARS S88°54'11"W



DATE: 03-23-22

F.N.: 19-05-124

D'ONOFRIO KOTTKE AND ASSOCIATES, INC.

7530 Westward Way, Madison, WI 53717
Phone: 608.833.7530 • Fax: 608.833.1089
YOUR NATURAL RESOURCE FOR LAND DEVELOPMENT