

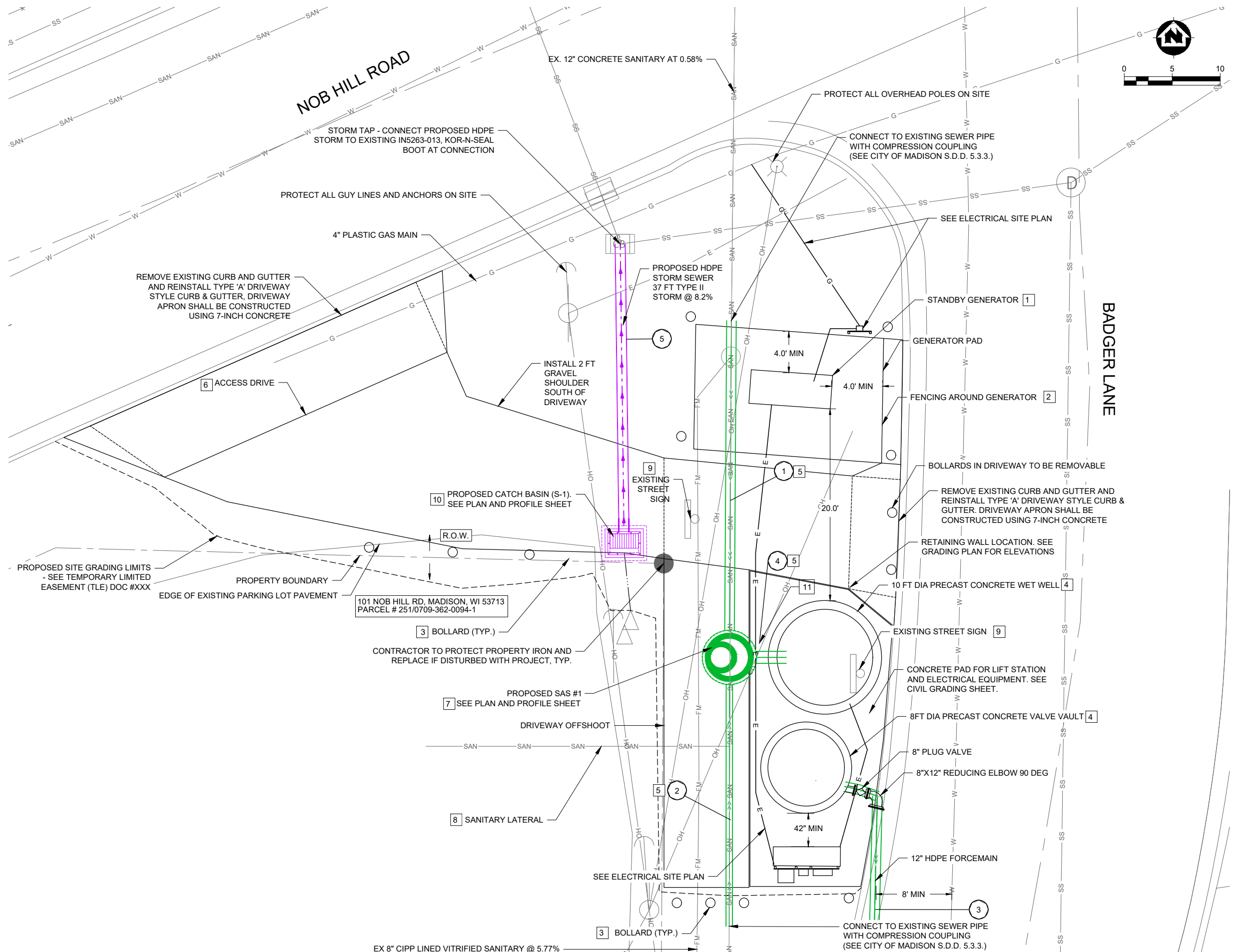
**GENERAL NOTES**

- A. SEE GENERAL NOTES ON G-2
- B. SEE ELECTRICAL PLANS FOR ADDITIONAL SITE INFORMATION.
- C. ALL DISTURBED GRASS AREAS SHALL BE RESTORED W/ 6" TOPSOIL, SEED, FERTILIZER, AND EROSION MAT TO MATCH EXISTING/PROPOSED GRADES. THE CONTRACTOR SHALL TAKE APPROPRIATE MEASURE TO PROTECT EXISTING TREES AND MINIMIZE TREE REMOVAL.
- D. ALL DISTURBED PAVEMENT SHALL BE SAWCUT, REMOVED, AND RESTORED PER INCLUDED DETAILS. FINAL SAWCUT LIMITS SHALL BE NEAT, STRAIGHT, AND REQUIRE APPROVAL BY OWNER OR ENGINEER PRIOR TO PAVEMENT REMOVAL. DISTURBED PAVEMENT MARKINGS SHALL BE REPLACED PER CITY OF MADISON STANDARD SPECIFICATIONS.
- E. SEE EROSION CONTROL DETAILS ON C-5 FOR EROSION CONTROL REQUIREMENTS. THE METHODS AND STRUCTURES USED TO CONTROL EROSION SHALL BE THE RESPONSIBILITY OF THE CONTRACTOR.
- F. ALL DISTURBED AREAS ARE APPROXIMATE. THE ACTUAL DISTURBANCE VARIES DEPENDING ON THE METHODS OF CONSTRUCTION. IT IS UP TO THE GENERAL CONTRACTOR TO DETERMINE THE METHODS OF CONSTRUCTION AND ADJUST DISTURBED AND RESTORED AREAS AND QUANTITIES AS NECESSARY.

**KEY NOTES:** #

- 1. STANDBY GENERATOR MOUNTED ON CONCRETE PAD - SEE ELECTRICAL.
- 2. FENCING SHALL BE ALUMINUM FIXED LOUVER FENCE W/ PERSONNEL GATE OPENING OF 48-IN MIN. FENCE SHALL BE A MINIMUM OF 1' TALLER THAN THE TOP OF THE GENERATOR. FENCE SHALL BE AMETCO MANUFACTURING CORP., OR EQUAL. CONTRACTOR SHALL SUBMIT CATALOG CUTS FOR REVIEW AND SELECTION OF STYLE AND COLOR BY ENGINEER. COORDINATE FENCING DIMENSIONS WITH GENERATOR DIMENSIONS AND GENERATOR CLEARANCE - SEE ELECTRICAL.
- 3. PIPE BOLLARDS - SEE CIVIL DETAILS
- 4. LIFT STATION - SEE MECHANICAL FOR DETAILS AND SECTIONS.
- 5. 8"-15" SDR 26 PVC . COORDINATE INVERT ELEVATIONS WITH EXISTING AND PROPOSED STRUCTURES. SEE MECHANICAL AND PLAN AND PROFILE SHEETS.
- 6. 3.5" ASPHALT DRIVEWAY WITH 8" BASE. ASPHALT PAVEMENT SHALL BE HMA PAVEMENT 4 LT 58-28S
- 7. 4' DIA CONCRETE SAS
- 8. CONTRACTOR TO VERIFY LATERAL LOCATION. REPLACE LATERAL WITHIN RIGHT-OF-WAY FROM MAIN TO PROPERTY LINE WITH SDR 26 PVC OF APPROPRIATE SIZE. RECONNECT LATERAL TO NEW SANITARY MAIN. PLACE SEWER ELECTRONIC MARKER BALLS AT WYE AND PROPERTY LINE.
- 9. REMOVE AND RELOCATE STREET SIGN.
- 10. PROVIDE 2'X3' H-INLET AND NEENAH R-1878 B7G GRATE. SEE PLAN AND PROFILE SHEET FOR ELEVATIONS.
- 11. 6" - 15" SDR 26 PVC @ 0.34%

| PROPOSED PIPE SCHEDULE # |      |  |
|--------------------------|------|--|
| PIPE #                   | SIZE | IDENTIFIER AND TYPE  |
| 1                        | 12"  | GRAVITY SEWER (SDR 26 PVC PIPE)  |
| 2                        | 8"   | GRAVITY SEWER (SDR 26 PVC PIPE)  |
| 3                        | 12"  | EFFLUENT FORCE MAIN (HDPE PIPE)  |
| 4                        | 15"  | GRAVITY SEWER (SDR 26 PVC PIPE)  |
| 5                        | 12"  | STORM SEWER (TYPE II PIPE. SEE ARTICLE 504 OF CITY OF MADISON STANDARD SPECIFICATIONS) |



| NO. | DATE | REVISION | BY |
|-----|------|----------|----|
|     |      |          |    |
|     |      |          |    |
|     |      |          |    |

**MSA** ENGINEERING | ARCHITECTURE | SURVEYING  
 FUNDING | PLANNING | ENVIRONMENTAL  
 1702 Pankratz St Madison, WI 53704  
 (608) 242-7779 www.msa-ps.com  
 © MSA Professional Services, Inc.

**00373142 BADGER LN LIFT STATION UPGRADES**  
 CITY OF MADISON  
 DANE COUNTY, WI

**PROPOSED SITE PLAN**  
 PROJECT NO. 00373142  
 SHEET C-3