



US 51 (Stoughton Road) South Corridor Study

Public Involvement Meeting

Robert M. La Follette High School, Madison, WI

July 15, 2025



US 51 South Study Area

Corridor Limits

Voges Rd./Terminal Dr. to South of WIS 30

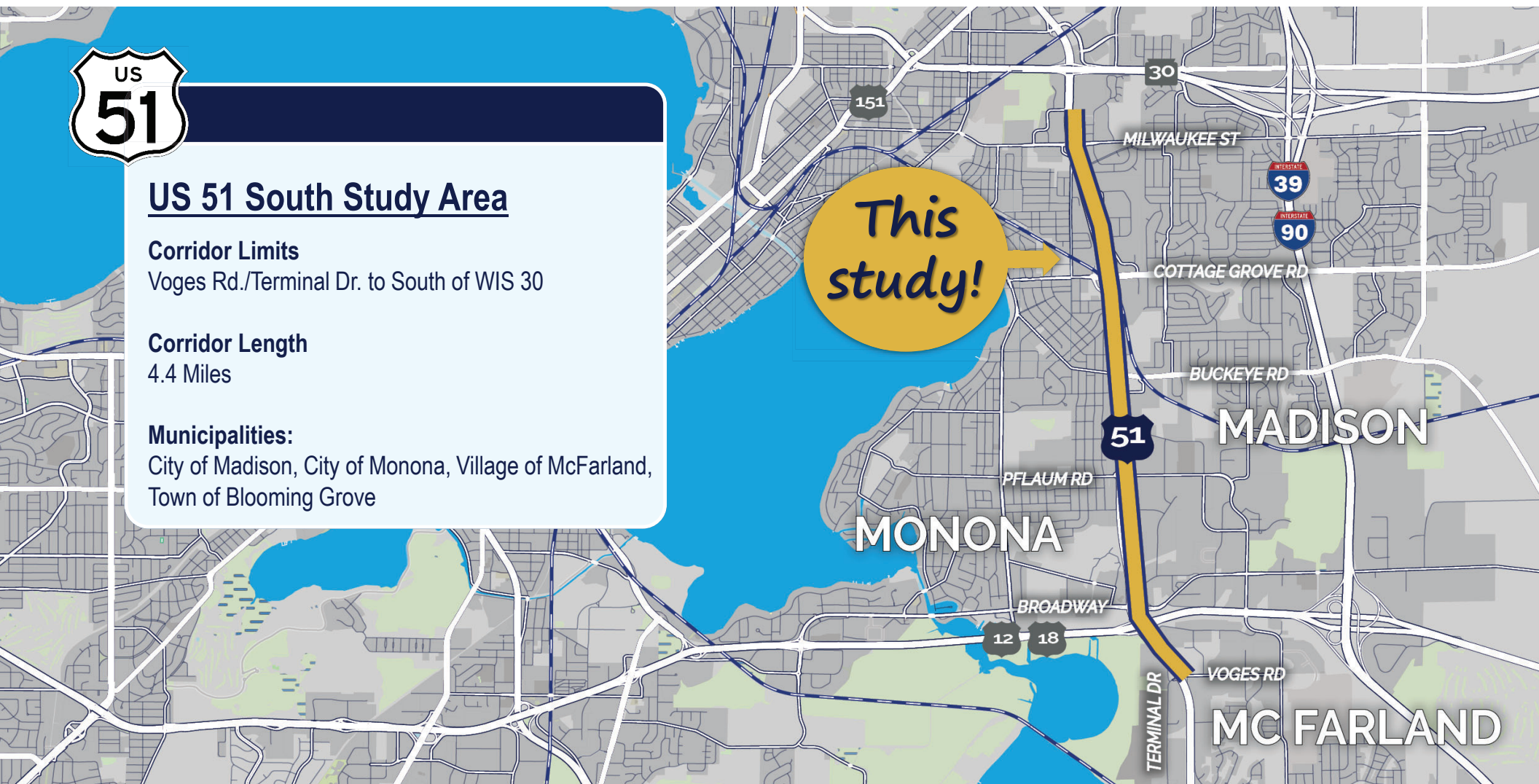
Corridor Length

4.4 Miles

Municipalities:

City of Madison, City of Monona, Village of McFarland,
Town of Blooming Grove

*This
study!*



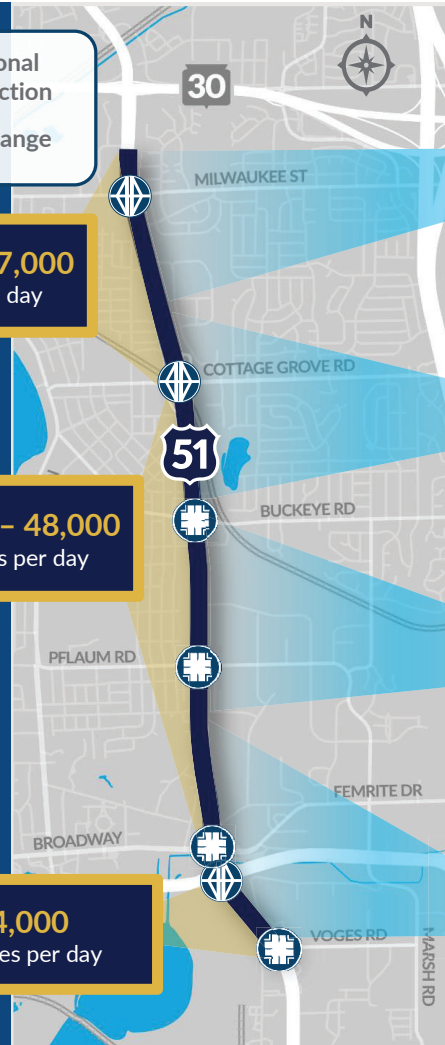
Existing Corridor

- Traditional Intersection
- Interchange

45,000 - 47,000
vehicles per day

42,000 - 48,000
vehicles per day

34,000
vehicles per day



Ditch - No Curb and Gutter

6-lanes, wide shoulders, ditches

SPEED
LIMIT
45

4-lanes, wide shoulders, ditches

SPEED
LIMIT
55

Frontage Roads

Business access from
Frontage Roads

Frontage
Road

4-lanes, wide shoulders, ditches

Frontage
Road

SPEED
LIMIT
45

4-7-lanes, wide shoulders, ditches



Purpose and Needs Summary

The **purpose** of the US 51 South Study is to improve safety and mobility for all modes of travel and improve community connectivity, guided by local plans and goals.

Needs:



Safety

High number of crashes at US 51 intersections and safety concerns for all modes of travel



Mobility

Poor operations and long backups at US 51 intersections



Connectivity

US 51 can act as a barrier, with limited east-west crossings



Study Process

Brainstorm
Potential
Improvements

Conceptual
Alternatives

Detailed
Alternatives

Preferred
Alternative

Conceptual Alternatives

November 2024 public meeting:
Corridor-wide concepts

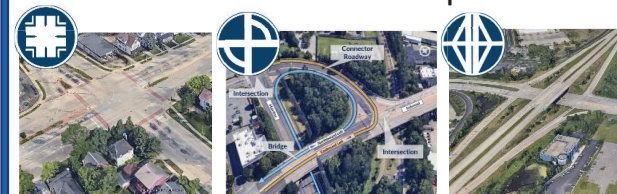


6-lanes, narrow shoulders, curb & gutter

Frontage
Road

Frontage
Road

July 2025 public meeting:
Intersection concepts



Your feedback on the conceptual alternatives will help us identify
what alternatives move forward for detailed study.

Detailed alternatives will define:

- ✓ Speed limits
- ✓ Roadway design characteristics
- ✓ Frontage road designs
- ✓ Intersection types
- ✓ Any potential new intersections
- ✓ Bicycle/pedestrian accommodations



Corridor Conceptual Alternatives Presented in Fall 2024

No Build Option

No improvements beyond routine maintenance.



Cross section from Pflaum Road to Buckeye Road

SPEED LIMIT	FRONTAGE ROAD (IN AREA OF BUCKEYE & PFLAUM ROADS)	NEW INTERSECTIONS	DRIVEWAYS ONTO US 51
Varies between 45 mph and 55 mph	Both Sides	None	None

Alt 1: 45 mph

Maintains 45 mph speeds compatible with hybrid intersections that improve east/west crossing.



Cross section from Pflaum Road to Buckeye Road

SPEED LIMIT	FRONTAGE ROAD (IN AREA OF BUCKEYE & PFLAUM ROADS)	NEW INTERSECTIONS	DRIVEWAYS ONTO US 51
45 mph	Both Sides	None	None

Alt 2: Expanded Intersections

Intersection delay is reduced by adding turn lanes and spacing to frontage road improved, but the footprint is large.



Cross section from Pflaum Road to Buckeye Road

SPEED LIMIT	FRONTAGE ROAD (IN AREA OF BUCKEYE & PFLAUM ROADS)	NEW INTERSECTIONS	DRIVEWAYS ONTO US 51
35 mph north of Beltline, 45 mph south of Beltline	Both Sides	None	None

Alt 3: Improved Frontage

Hybrid intersections minimize the impact of keeping frontage roads.



Cross section from Pflaum Road to Buckeye Road

SPEED LIMIT	FRONTAGE ROAD (IN AREA OF BUCKEYE & PFLAUM ROADS)	NEW INTERSECTIONS	DRIVEWAYS ONTO US 51
35 mph north of Beltline, 45 mph south of Beltline	Both sides or west only	1 Helgesen Drive	0-14

Alt 4: Direct Access

Driveways allowed directly onto US 51 improving access.



Cross section from Pflaum Road to Buckeye Road

SPEED LIMIT	FRONTAGE ROAD (IN AREA OF BUCKEYE & PFLAUM ROADS)	NEW INTERSECTIONS	DRIVEWAYS ONTO US 51
35 mph	West only or none	3 Tompkins Drive Helgesen Drive Robertson Road	14-73

Alt 5: Wide Boulevard

Moves US 51 to replace the existing frontage road system and connects business driveways directly onto US 51.



Cross section from Pflaum Road to Buckeye Road

SPEED LIMIT	FRONTAGE ROAD (IN AREA OF BUCKEYE & PFLAUM ROADS)	NEW INTERSECTIONS	DRIVEWAYS ONTO US 51
35 mph	None	4 Tompkins Drive Helgesen Drive Allis Avenue Robertson Road	41-73



Intersection Types

Improve Existing Traditional Intersections

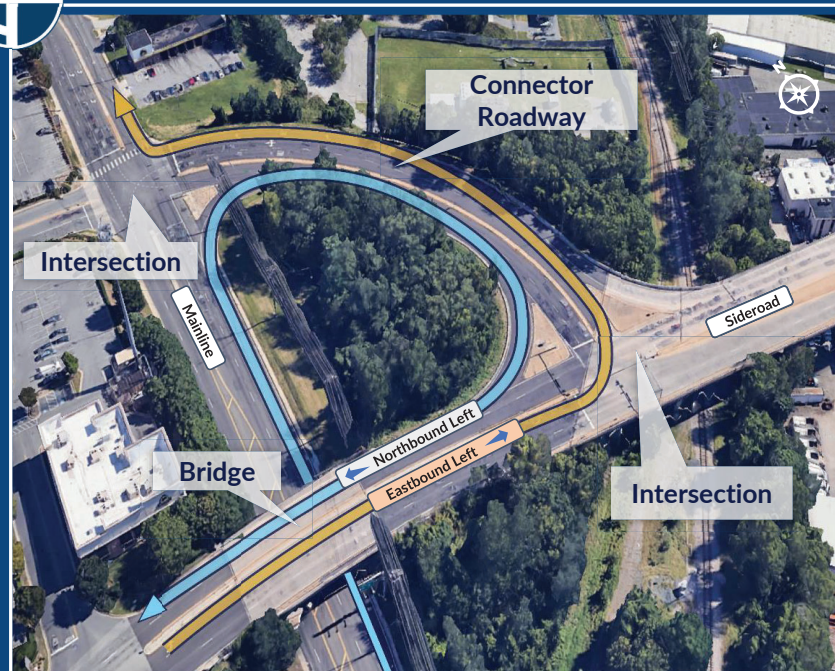


Potential Locations:

Buckeye Road,
Pflaum Road,
Broadway,
Voges Road



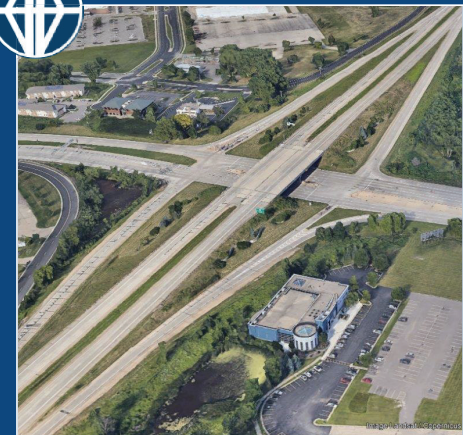
New Idea: Hybrid Intersection Conversion



Potential Locations:

Milwaukee Street, Cottage Grove Road, Buckeye Road, Pflaum Road, Broadway, Voges Road

Improve Existing Interchanges



Potential Locations:

Milwaukee Street,
Cottage Grove Road,
US 12/18 (Beltline)





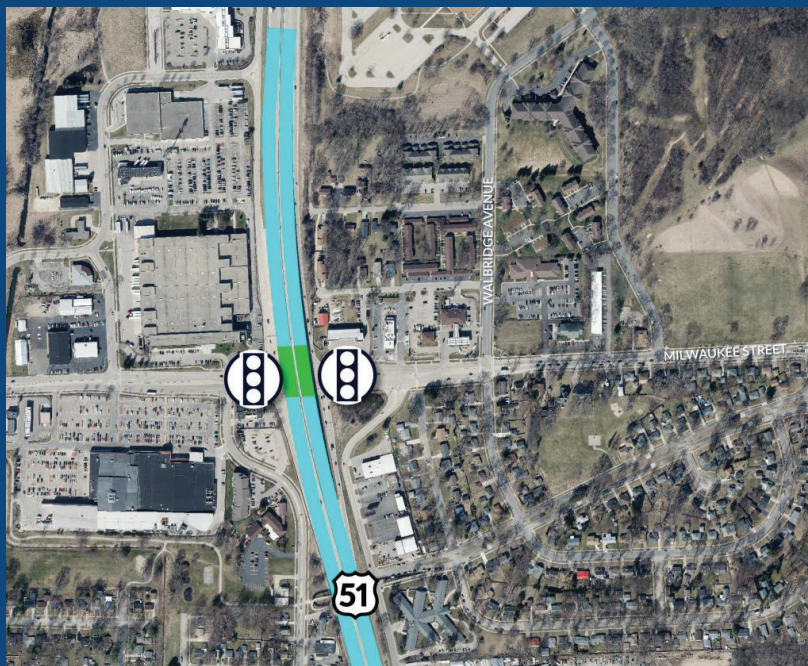
Intersection Conceptual Alternatives



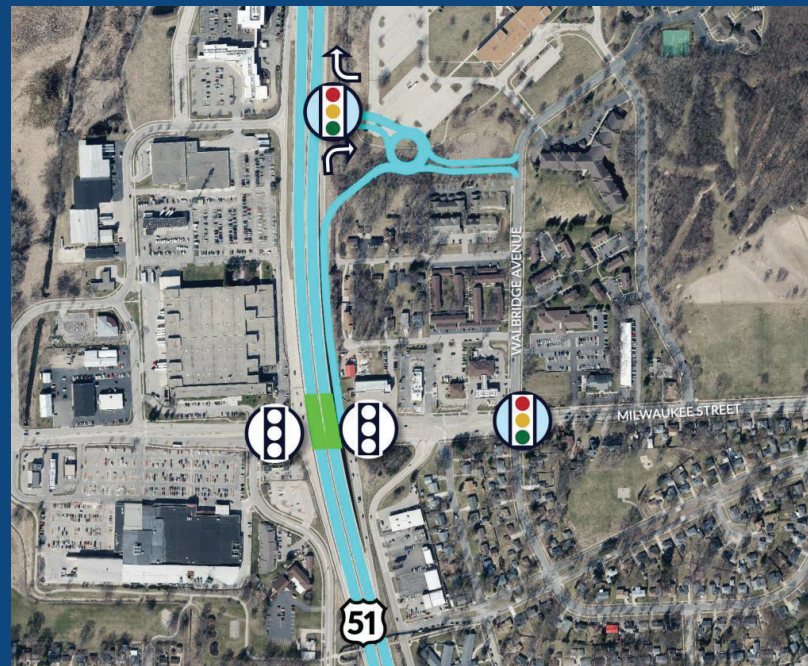
Milwaukee Street



Improve Existing Interchange



Hybrid Intersection



LEGEND:



New signal



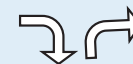
Improve existing signal



US 51 Improvements



Existing Bridge



Right turns only



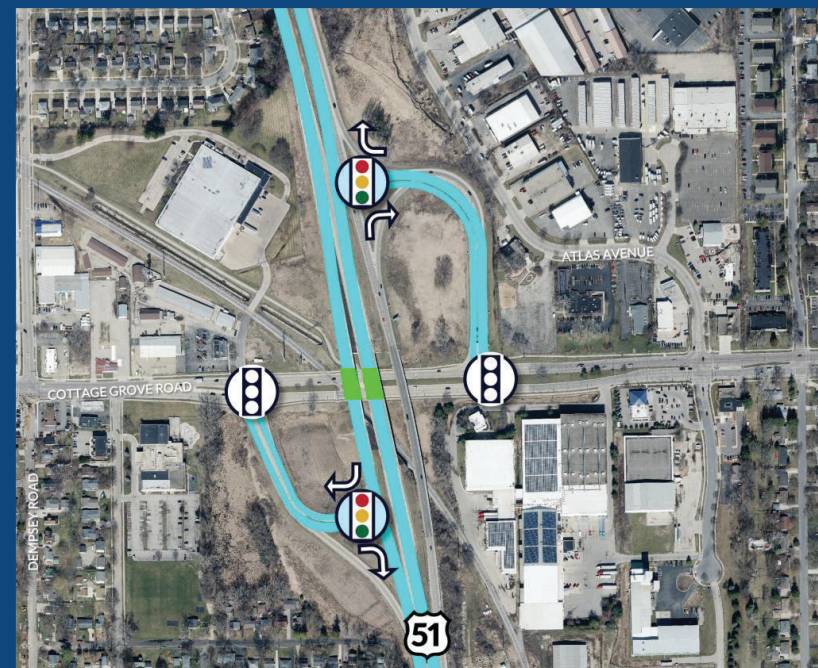
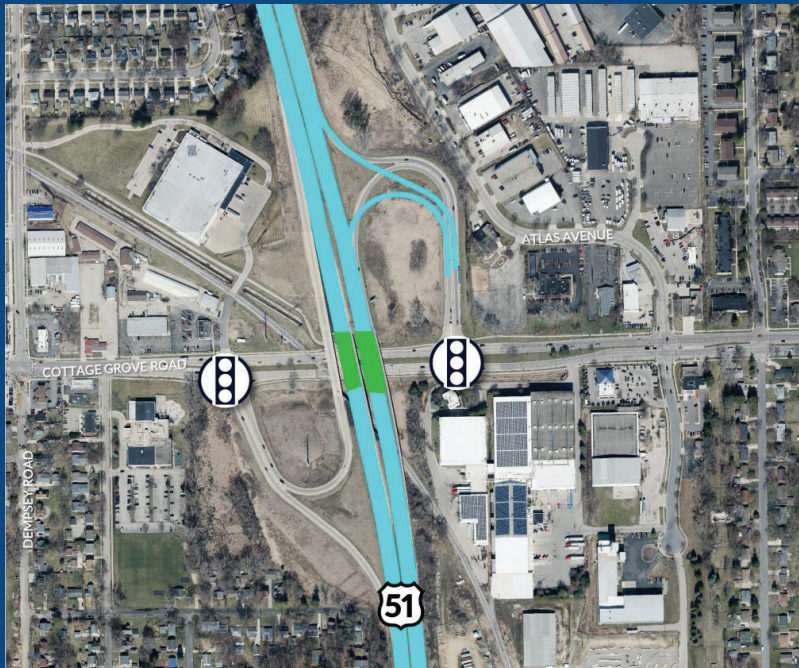
Cottage Grove Road



Improve Existing Interchange



Hybrid Intersection



LEGEND:



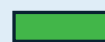
New signal



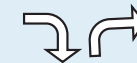
Improve existing signal



US 51 Improvements



Existing Bridge



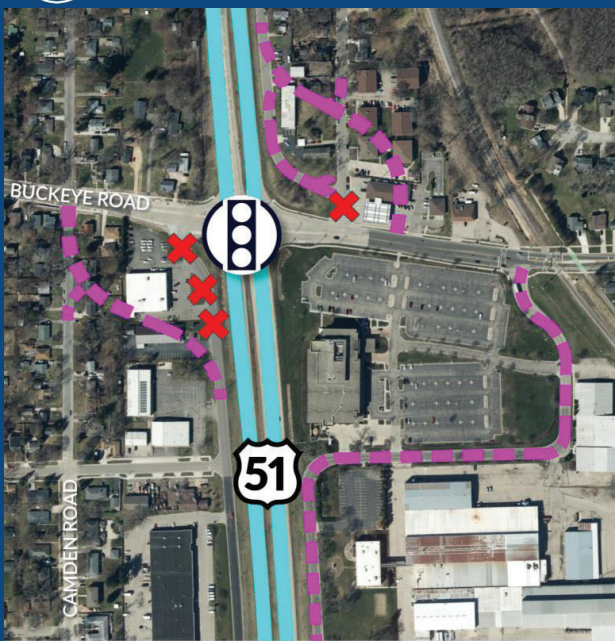
Right turns only



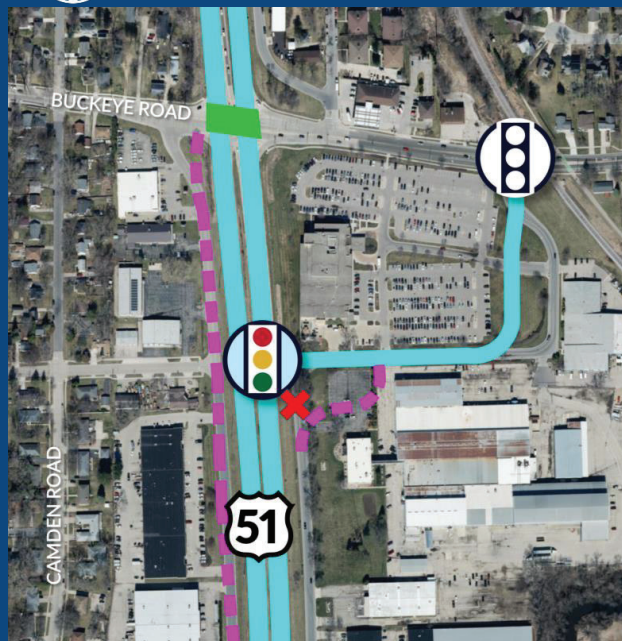
Buckeye Road



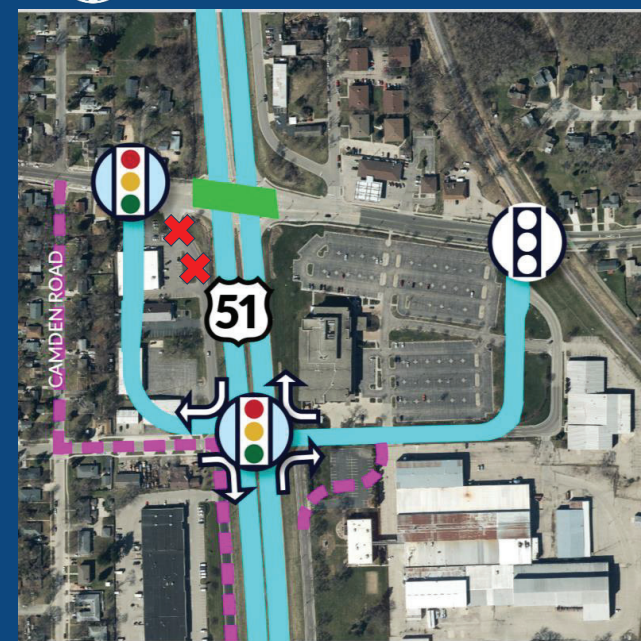
Expanded Intersection



One Connector Hybrid



Two Connector Hybrid



LEGEND:



New signal



Improve existing signal



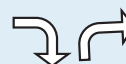
US 51 Improvements



Potential Frontage Road



Proposed Bridge



Right turns only



Remove Roadway



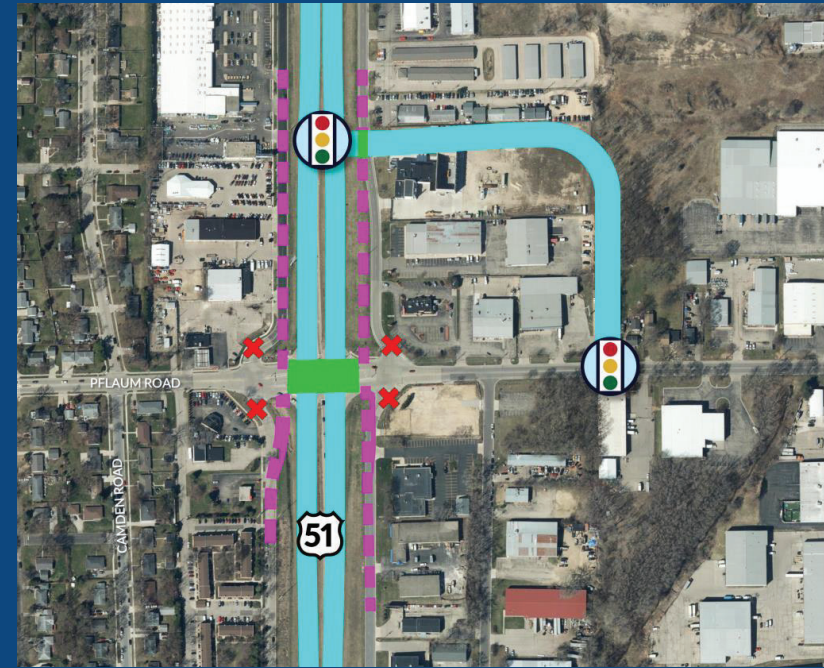
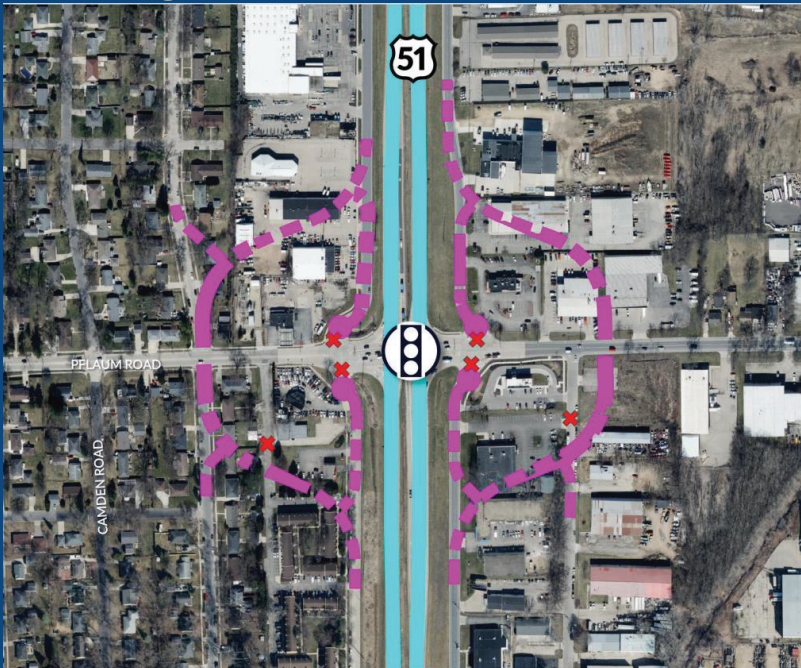
Pflaum Road



Expanded Intersection



Hybrid Intersection



LEGEND:



New signal



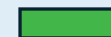
Improve existing signal



US 51 Improvements



Potential Frontage Road



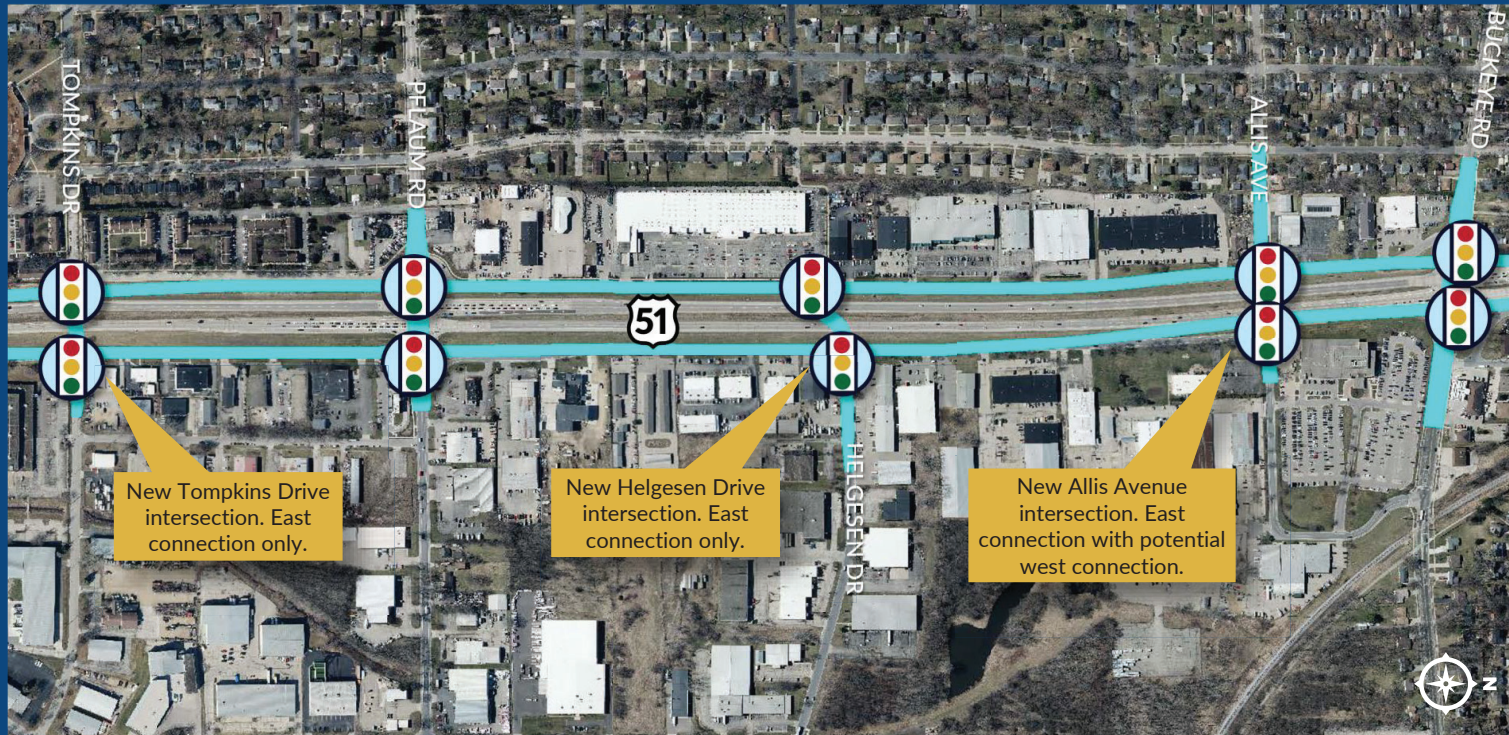
Proposed Bridge





Remove Roadway



Wide Boulevard



LEGEND:

-  New signal
-  US 51 Improvements



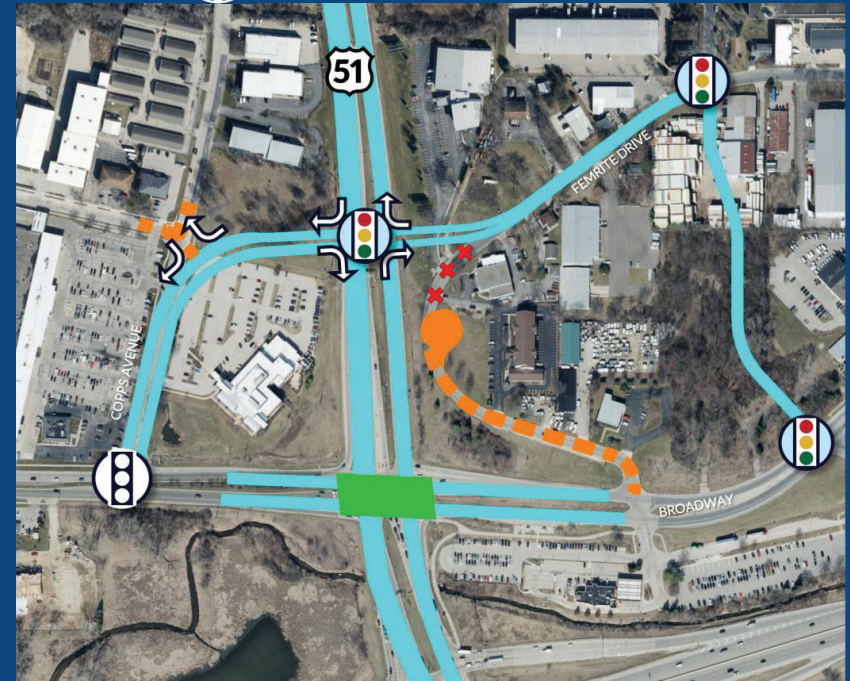
Broadway



Offset Tee Intersection



Hybrid Intersection



LEGEND:



New signal



Improve existing signal



US 51 Improvements



Local Road Improvements



Proposed Bridge



Right turns only



Remove Roadway



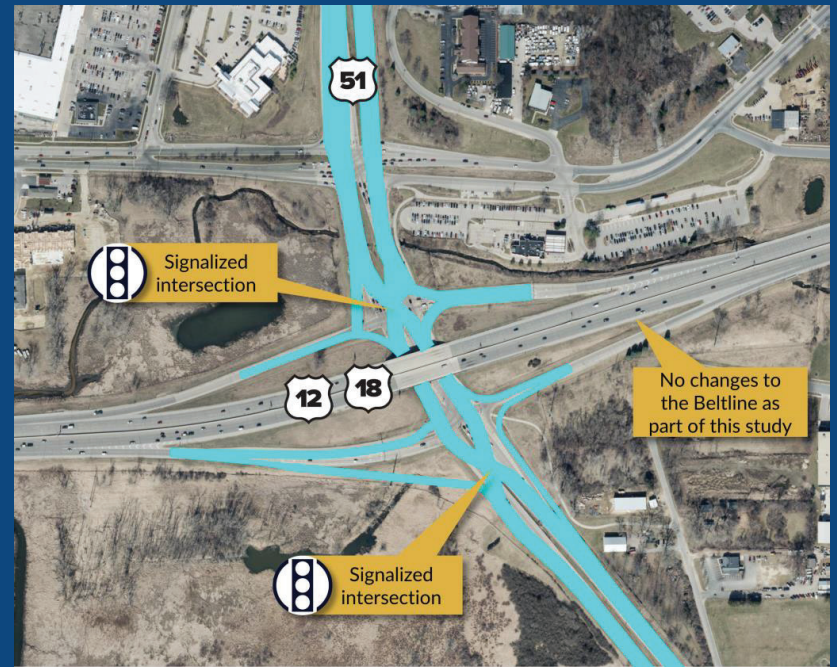
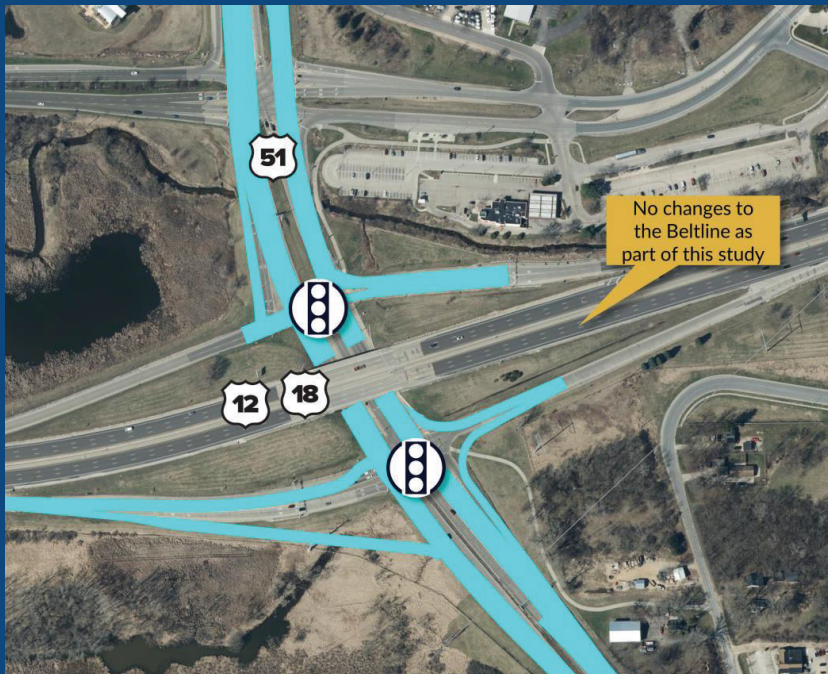
Beltline Interchange



Improve Existing Interchange



Diverging Diamond Interchange



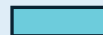
LEGEND:



New signal



Improve existing signal



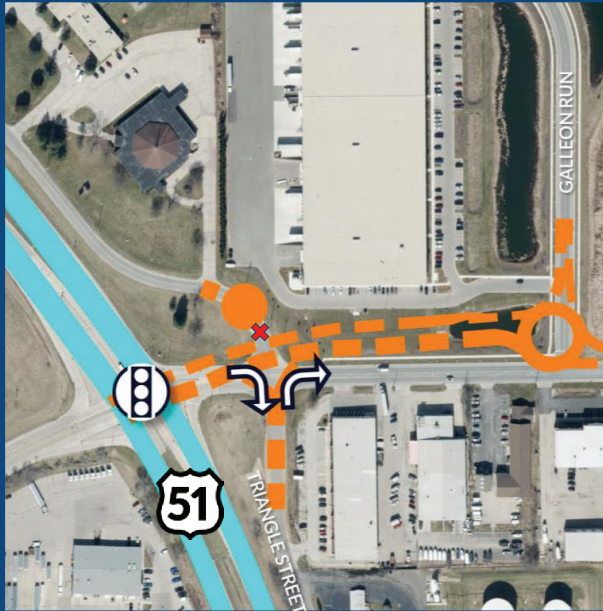
US 51 Improvements



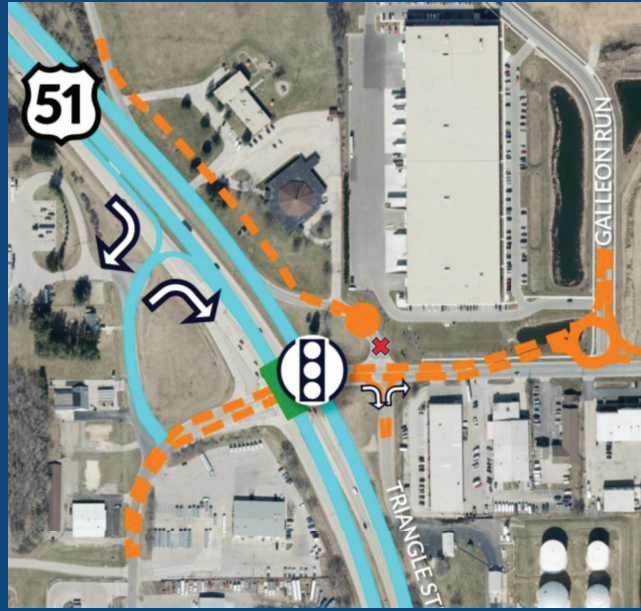
Voges Road / Terminal Drive



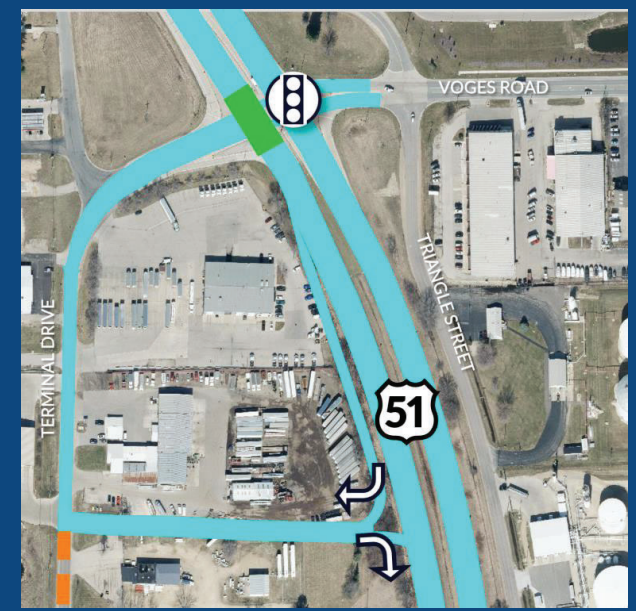
Expanded Intersection



North Hybrid Connector



South Hybrid Connector



LEGEND:



New signal



Improve existing signal



US 51 Improvements



Local Road Improvements



Proposed Bridge



Right turns only

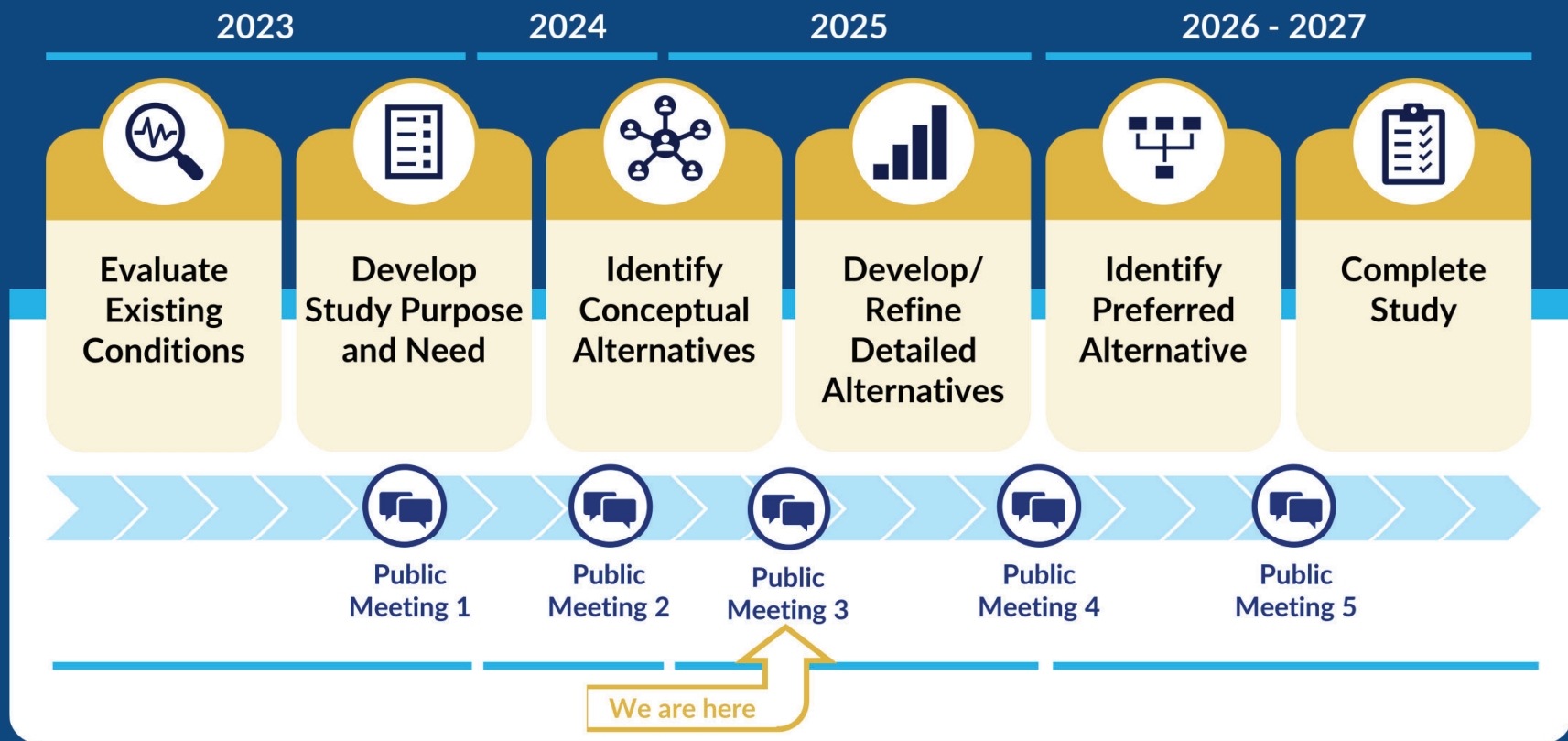


Remove Roadway



Next Steps

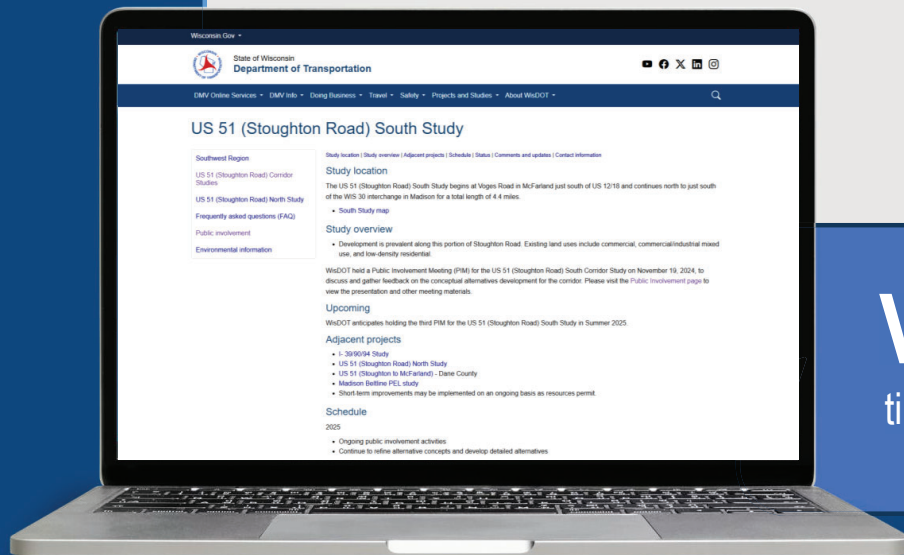
We are early in a multi-year process.
Your input will steer the remainder of the study.



Who should I contact?

Jeff Berens
Project Manager
WisDOT SW Region

2101 Wright St
Madison, WI 53704
Tel. (608) 245-2656
Jeff.Berens@dot.wi.gov

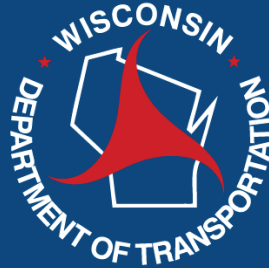


Visit:
tinyurl.com/US51SouthStudy



Or scan
this QR
code





US 51 (Stoughton Road) South Corridor Study

Thank you!

