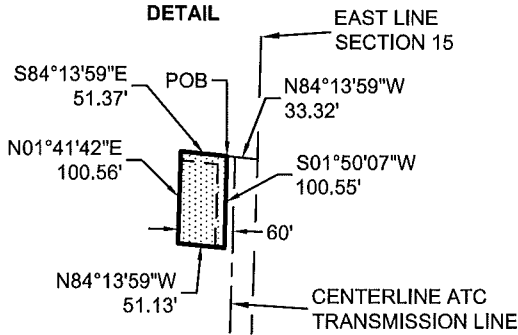
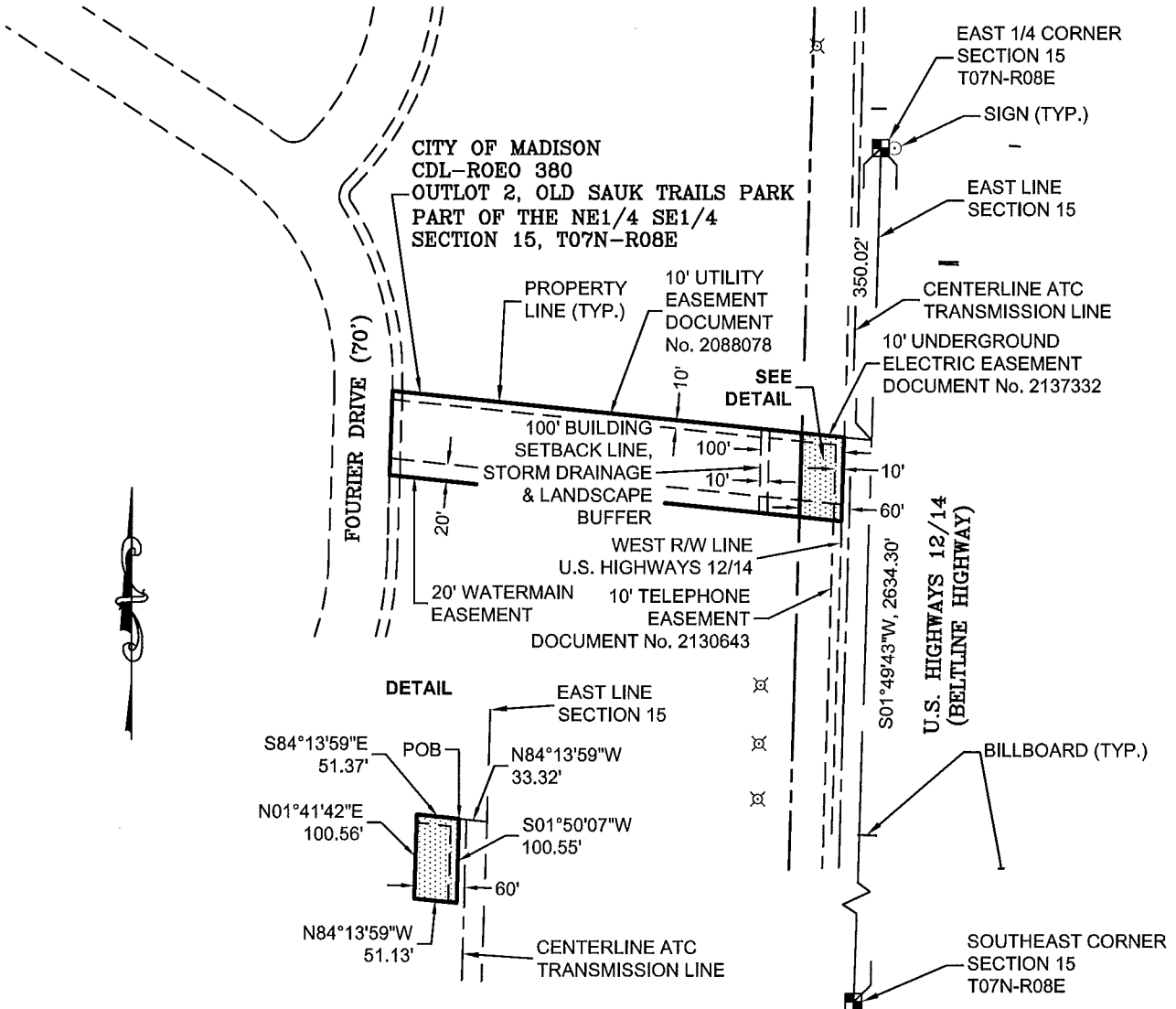


# EASEMENT DESCRIPTION MAP (EXHIBIT B)

GRANTEE: AMERICAN TRANSMISSION COMPANY LLC  
 W234 N2000 RIDGEVIEW PARKWAY COURT  
 WAUKESHA, WI 53188

GRANTOR: CITY OF MADISON  
 210 MLK JR BLVD RM 115  
 MADISON, WI 53703  
 TAX PARCEL NO. 251-0708-154-0106-6

S:\GPS\ATC\60102535\_ ROCKDALE - CARDINAL\_SEG 0\EXHIBIT B\T07N-R08E\_SECTION 15\CITY OF MADISON\_380.dwg; 3/15/2011 12:03:43 PM; KOSS, STEVE



- LEGEND**
- TRANSMISSION EASEMENT
  - TRANSMISSION RIGHT OF WAY LINE
  - TRANSMISSION CENTERLINE
  - SECTION LINE
  - PROPERTY LINE
  - ROAD RIGHT OF WAY LINE
  - LIGHT POLE
  - CDL-ROEO 380 ATC NUMBER

**MAP KEY**

ATC TRANSMISSION LINE EASEMENT = 0.118 ACRES +/-

NOTE: BEARINGS BASED UPON THE WISCONSIN STATE PLANE COORDINATE SYSTEM NAD 83/2007, SOUTH ZONE.



- LEGEND**
- - Found Iron
  - - Set 5/8" Iron W/P.S. Cap #: S-1704
  - - Found Concrete Monument
  - - Set Concrete Monument
  - R - RECORDED
  - M - MEASURED

Drawn :	SDK
Date:	03/15/2011
Scale:	1" = 200'
PROJECT NUMBER	60143552
SHEET NUMBER	1 OF 2

REVISIONS

906.228.2333  
 www.aecom.com  
 Copyright © 2011 By: AECOM

# EASEMENT DESCRIPTION MAP (EXHIBIT B)

GRANTEE: AMERICAN TRANSMISSION COMPANY LLC  
 W234 N2000 RIDGEVIEW PARKWAY COURT  
 WAUKESHA, WI 53188

GRANTOR: CITY OF MADISON  
 210 MLK JR BLVD RM 115  
 MADISON, WI 53703  
 TAX PARCEL NO. 251-0708-154-0106-6

S:\GPS\ATC\60102535\_ROCKDALE-CARDINAL\60143552\_ROCKDALE-CARDINAL\_SEG 0\EXHIBIT B\T07N-R08E\SECTION 15\CITY OF MADISON 360.dwg: 3/15/2011 12:04:11 PM; KOSS, STEVE

A variable width easement which crosses a part of the grantor's premises across part of Outlot 2, Old Sauk Trails Park being part of the Northeast Quarter (NE 1/4) of the Southeast Quarter (SE 1/4) of Section 15, T07N-R08E, City of Madison, Dane County, Wisconsin, described as:

Commencing at the East 1/4 corner of Section 15; thence S01°49'43"W, 350.02' along the East line of Section 15 to the North line of Outlot 2, Old Sauk Trails Park and the grantor's North property line extended; thence N84°13'59"W, 33.32' along the North line of Outlot 2, Old Sauk Trails Park and the grantor's North property line extended to the West right-of-way line of U.S. Highways 12/14, the Northeast corner of Outlot 2, Old Sauk Trails Park, the grantor's Northeast property corner and the **Point of Beginning**; thence S01°50'07"W, 100.55' along the West right-of-way line of U.S. Highways 12/14, the East line of Outlot 2, Old Sauk Trails Park and the grantor's East property line to the Southeast corner of Outlot 2, Old Sauk Trails Park and the grantor's Southeast property corner; thence N84°13'59"W, 51.13' along the South line of Outlot 2, Old Sauk Trails Park and the grantor's South property line; thence N01°41'42"E, 100.56' to the North line of Old Sauk Trails Park and the grantor's North property line; thence S84°13'59"E, 51.37' along the North line of Outlot 2, Old Sauk Trails Park and the grantor's North property line to the West right-of-way line of U.S. Highways 12/14, the Northeast corner of Outlot 2, Old Sauk Trails Park, the grantor's Northeast property corner and the **Point of Beginning** being more particularly described as shown on sheet 1 containing 0.118 Acres +/- and subject to restrictions, reservations, rights of way, and easements of record.

NOTE: BEARINGS BASED UPON THE WISCONSIN STATE PLANE COORDINATE SYSTEM NAD 83/2007, SOUTH ZONE.



906.228.2333  
 www.aecom.com  
 Copyright © 2011 By: AECOM



- LEGEND
- - Found Iron
  - - Set 5/8" Iron W/P.S. Cap #: S-1704
  - - Found Concrete Monument
  - - Set Concrete Monument
  - R - RECORDED
  - M - MEASURED

Drawn :	SDK
Date:	03/15/2011
Scale:	N/A
PROJECT NUMBER	60143552
SHEET NUMBER	2 OF 2

REVISIONS		
-----------	--	--