



OAKWOOD VILLAGE

UNIVERSITY WOODS

MADISON, WISCONSIN

NEW SKILLED NURSING FACILITY

INDEX

AP001	LOCATION MAP & CONTEXT	AP102	2ND FLOOR PLAN
AP002	AERIAL	AP103	3RD FLOOR PLAN
AP014	SITE PLAN COMPARISON	AP200	ELEVATIONS - COLOR
		AP201	ELEVATIONS - COLOR
C141	SITE UTILITIES PLAN	AP204	EXTERIOR MATERIALS
C016	EXISTING TREE SURVEY PLAN	AP400	LOOKING SOUTHWEST TO MAIN ENTRY
T001	TREE ANALYSIS	AP401	LOOKING SOUTHWEST TO MAIN ENTRY
T002	TREE ANALYSIS	AP402	LOOKING SOUTH TO COVENANT DROP-OFF
		AP403	LOOKING SOUTHWEST FROM WEST TERRACE
L100	LANDSCAPE PLAN	AP500	PHOTOS OF EXISTING SITE
L400	HEBRON SITE RESTORATION		
ES001	ELECTRICAL SITE PLAN & INDEX SHEET		
ES101	SITE PLAN – SOUTHEAST – ELECTRICAL		
ES102	SITE PLAN – SOUTHWEST – ELECTRICAL		
ES103	SITE PLAN – NORTH – ELECTRICAL		
AP010	EXISTING SITE PLAN		
AP011	PROPOSED SITE PLAN		
AP012	FUTURE BUILDING DEMOLITION PLAN		
AP013	FUTURE SITE PLAN		
AP100	LOWER LEVEL FLOOR PLAN		
AP101	1ST FLOOR PLAN		

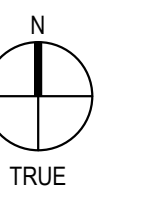
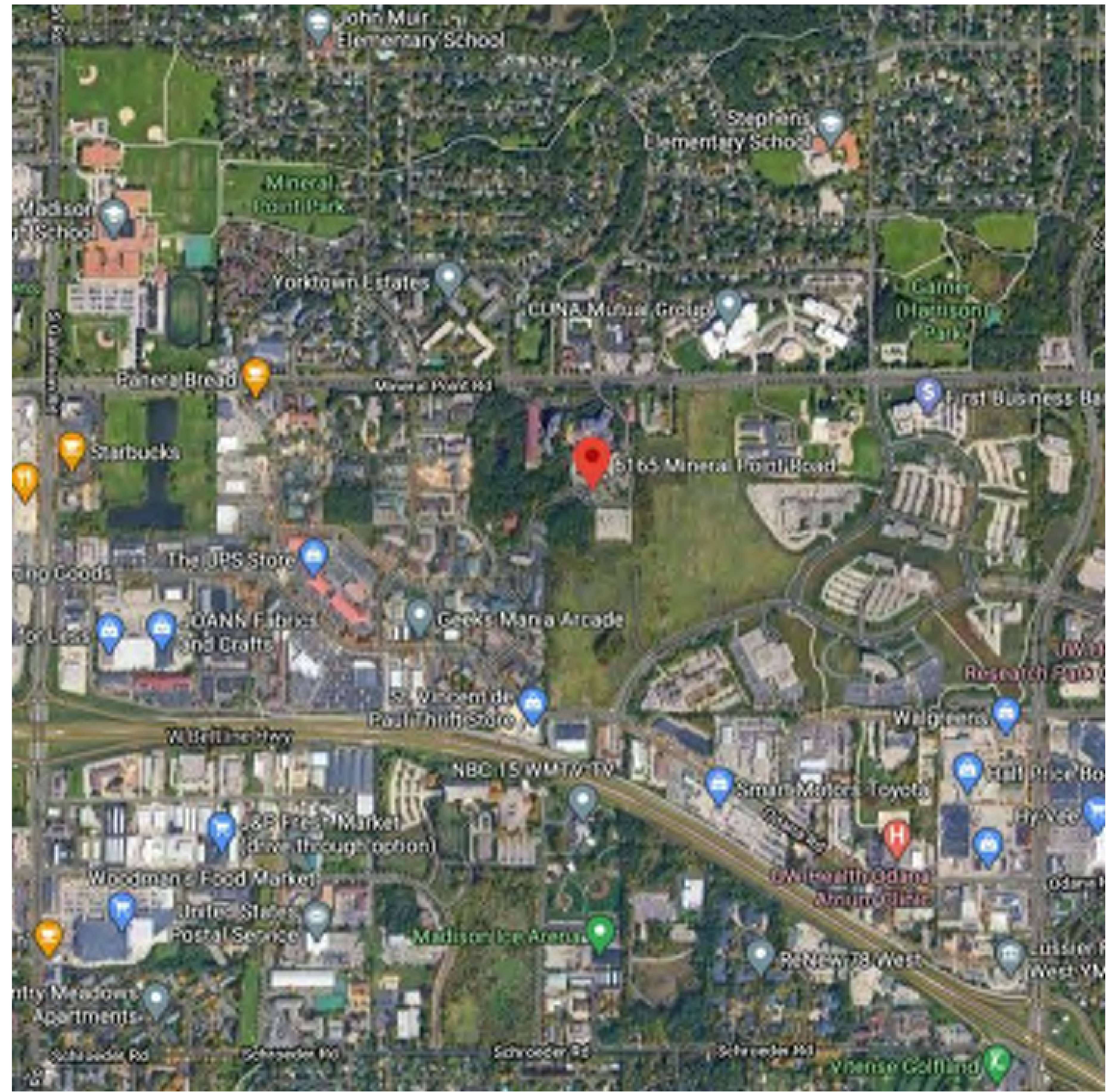
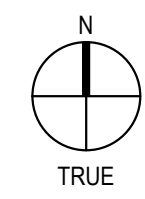
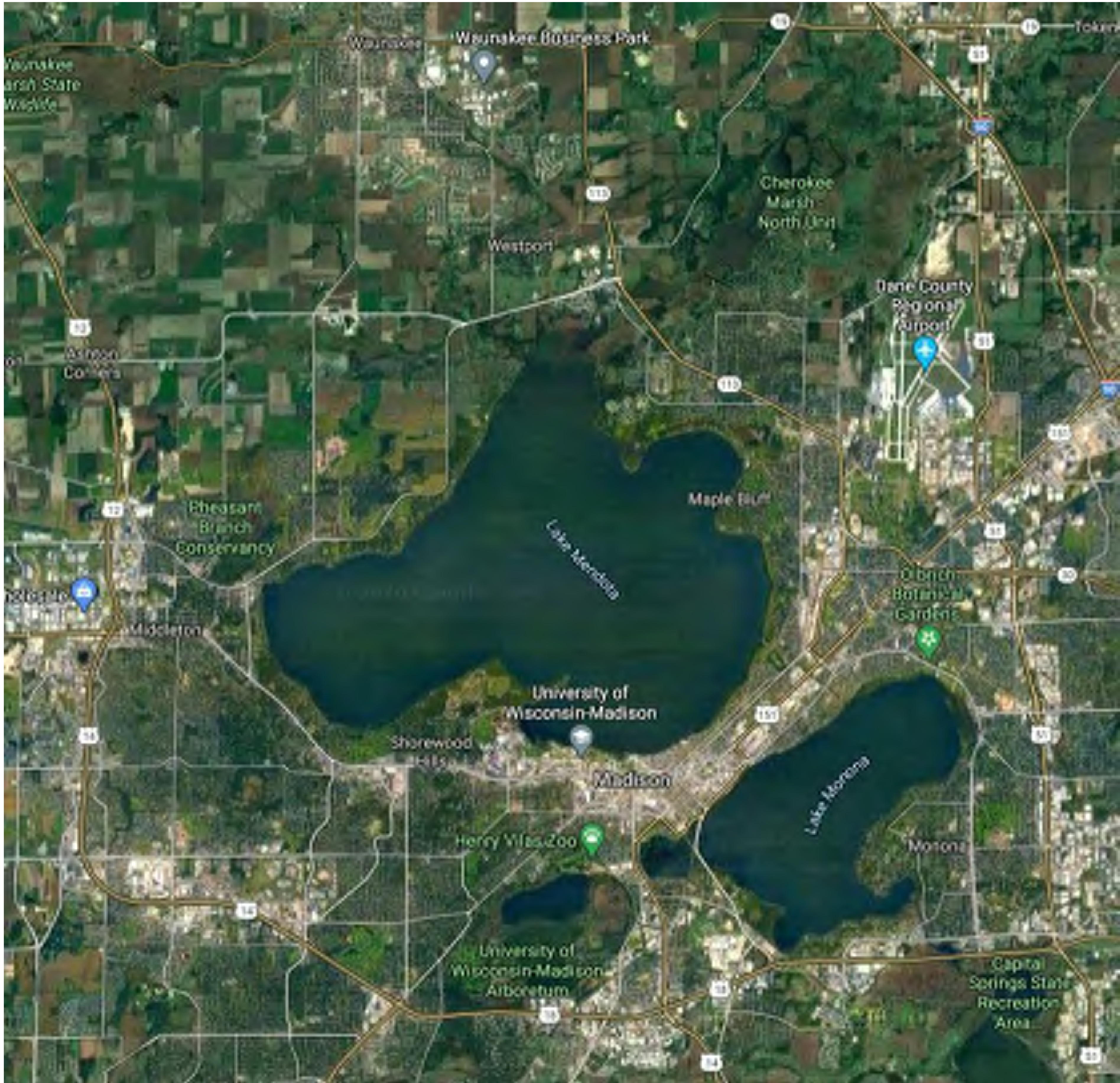


FINAL APPROVAL SUBMITTAL

06/01/2021 REDUCED FOR PRESENTATION

04/14/21

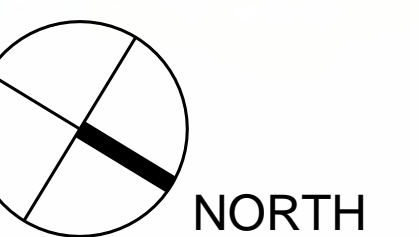
PROJECT NUMBER: 120290-01



LOCATION MAP & CONTEXT

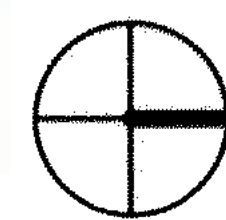


— CAMPUS BOUNDARY
— NEW BUILDING LOCATION ON CAMPUS

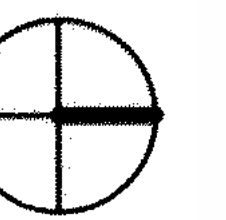




PREVIOUS



CURRENT





milwaukee 333 East Chicago Street
Milwaukee, Wisconsin 53202
414.271.5350

madison 309 West Johnson Street, Suite 202
Madison, Wisconsin 53703
608.442.2590

denver 1899 Wynkoop Street, Suite 300
Denver, Colorado 80202
303.595.4500

PROJECT INFORMATION

**OAKWOOD VILLAGE
UNIVERSITY WOODS
- SKILLED NURSING
FACILITY**

6165 Mineral Point Rd,
Madison, WI 53705

ISSUANCE AND REVISIONS

DATE	DESCRIPTION
10-30-2020	SCHEMATIC DESIGN
04-14-2021	UDC, GDP, SIP SUBMITTAL
04-16-2021	DESIGN DEVELOPMENT

KEY PLAN

SHEET INFORMATION

**PROGRESS DOCUMENTS
NOT FOR CONSTRUCTION**

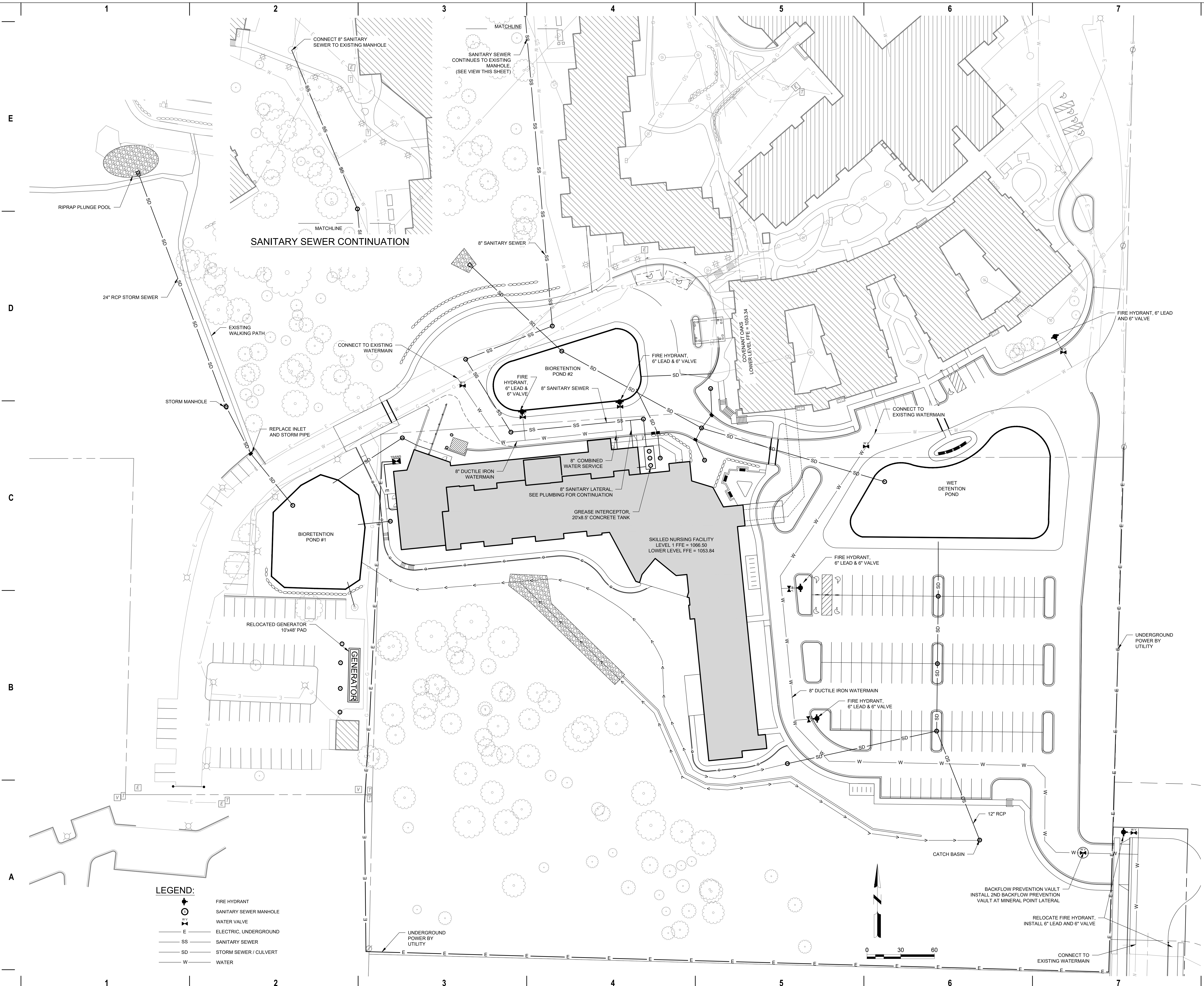
These documents reflect progress and intent and may be subject to change, including additional detail. These are not final construction documents and shall not be used for final bidding or construction-related purposes.

PROJECT MANAGER MO
PROJECT NUMBER 120290-01

SITE UTILITIES PLAN

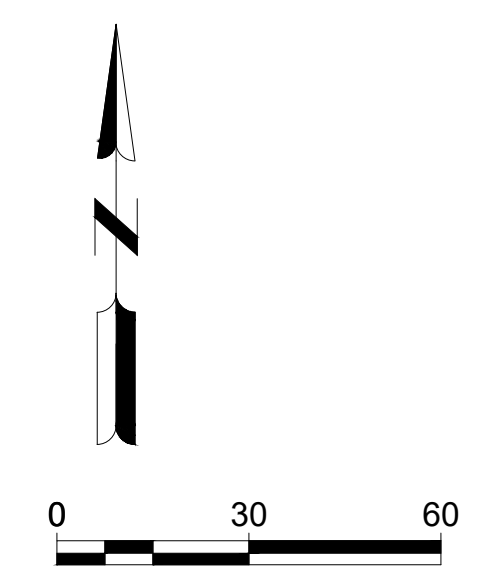
C141

© Epstein Uhen Architects, Inc.



LEGEND:

	FIRE HYDRANT
	SANITARY SEWER MANHOLE
	WATER VALVE
	ELECTRIC, UNDERGROUND
	SANITARY SEWER
	STORM SEWER / CULVERT
	WATER





milwaukee 333 East Chicago Street
 Milwaukee, Wisconsin 53202
 414.271.5350
 madison 309 West Johnson Street, Suite 202
 Madison, Wisconsin 53703
 608.442.2590
 denver 1899 Wynkoop Street, Suite 300
 Denver, Colorado 80202
 303.595.4500

PROJECT INFORMATION
OAKWOOD VILLAGE
UNIVERSITY WOODS
- SKILLED NURSING
FACILITY

6165 Mineral Point Rd,
 Madison, WI 53705

ISSUANCE AND REVISIONS

DATE	DESCRIPTION
10-30-2020	SCHEMATIC DESIGN
04-14-2021	UDC, GDP, SIP SUBMITTAL

KEY PLAN

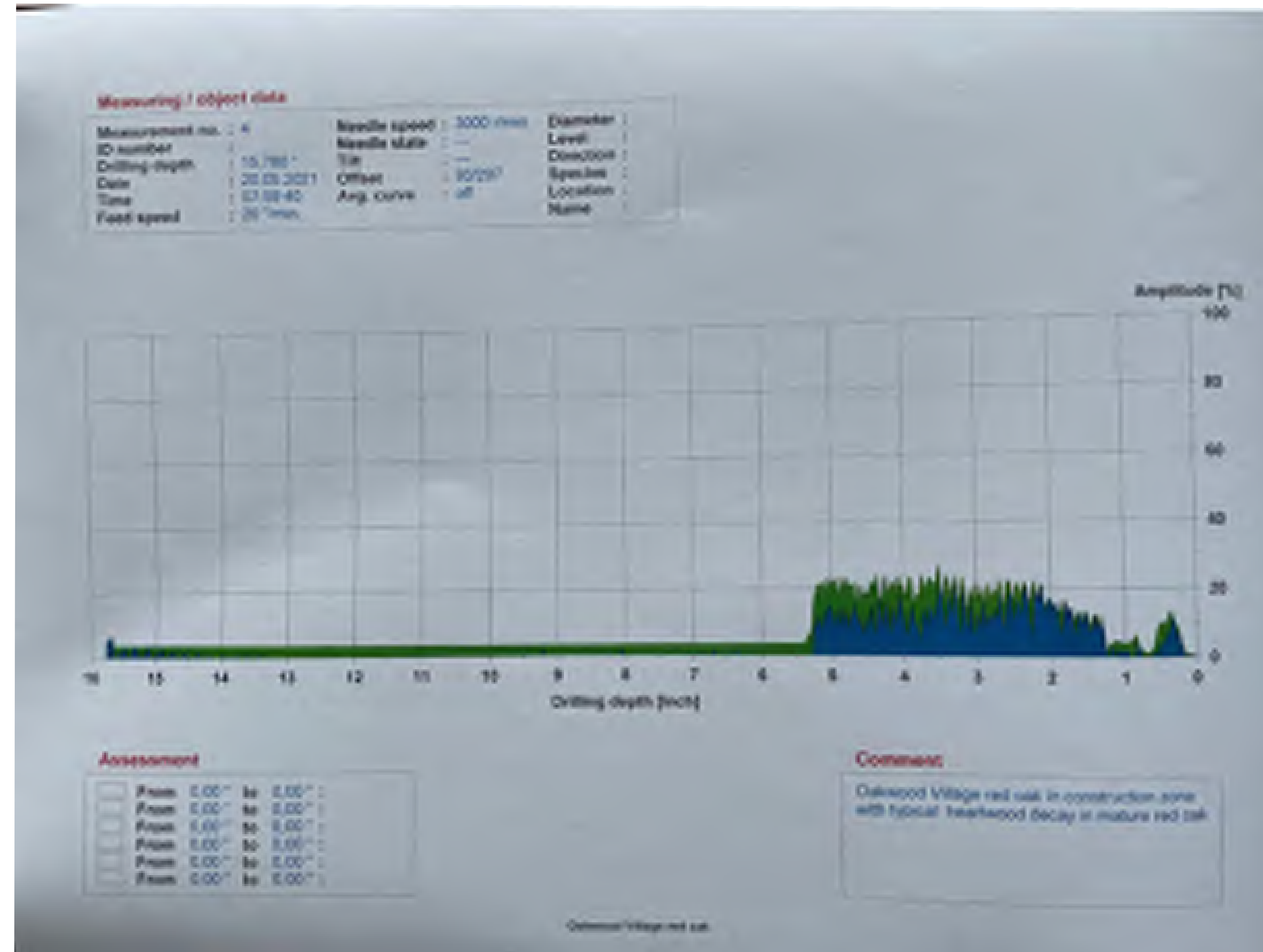
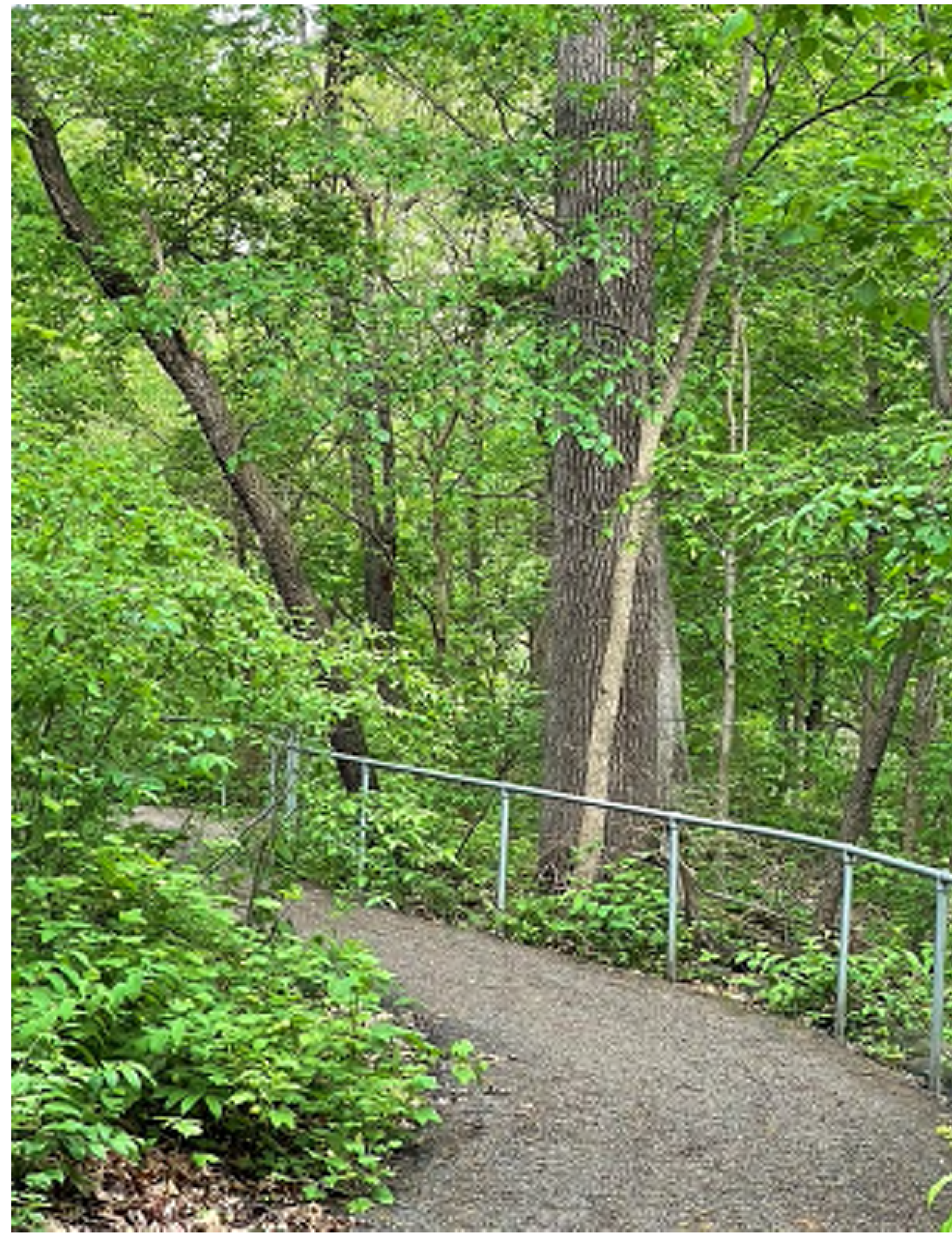
SHEET INFORMATION

PROGRESS DOCUMENTS
NOT FOR CONSTRUCTION
 These documents reflect progress and intent and may be subject to change, including additional detail. These are not final construction documents and shall not be used for final bidding or construction-related purposes.

PROJECT MANAGER MO
 PROJECT NUMBER 120290-01

EXISTING TREE
SURVEY PLAN

C016



milwaukee 333 East Chicago Street
Milwaukee, Wisconsin 53202
414.271.5350

madison 309 West Johnson Street, Suite 202
Madison, Wisconsin 53703
608.442.2590

denver 1899 Wynkoop Street, Suite 300
Denver, Colorado 80202
303.556.4500

PROJECT INFORMATION

**OAKWOOD VILLAGE
UNIVERSITY WOODS
- SKILLED NURSING
FACILITY**

6165 Mineral Point Rd,
Madison, WI 53705

ISSUANCE AND REVISIONS

DATE	DESCRIPTION
10-30-2020	SCHEMATIC DESIGN
04-14-2021	UDC, GDP, SIP SUBMITTAL

KEY PLAN

SHEET INFORMATION

**PROGRESS DOCUMENTS
NOT FOR CONSTRUCTION**

These documents reflect progress and intent and may be subject to change, including additional detail. These are not final construction documents and shall not be used for final bidding or construction-related purposes.

PROJECT MANAGER MO
PROJECT NUMBER 120290-01

TREE ANALYSIS

T001

© Epstein Uhen Architects, Inc.

1

2

3

4

5

6

7

E

D

C



B

A



milwaukee 333 East Chicago Street
Milwaukee, Wisconsin 53202
414.271.5350

madison 309 West Johnson Street, Suite 202
Madison, Wisconsin 53703
608.442.2550

denver 1899 Wynkoop Street, Suite 300
Denver, Colorado 80202
303.556.4500

PROJECT INFORMATION

**OAKWOOD VILLAGE
UNIVERSITY WOODS
- SKILLED NURSING
FACILITY**

6165 Mineral Point Rd,
Madison, WI 53705

ISSUANCE AND REVISIONS

DATE	DESCRIPTION
10-30-2020	SCHEMATIC DESIGN
04-14-2021	UDC, GDP, SIP SUBMITTAL

KEY PLAN

SHEET INFORMATION

**PROGRESS DOCUMENTS
NOT FOR CONSTRUCTION**

These documents reflect progress and intent and may be subject to change, including additional detail. These are not final construction documents and shall not be used for final bidding or construction-related purposes.

PROJECT MANAGER MO
PROJECT NUMBER 120290-01

TREE ANALYSIS

T002

© Eppstein Uhen Architects, Inc.



milwaukee 333 East Chicago Street
Milwaukee, Wisconsin 53202
414.271.5350

madison 309 West Johnson Street, Suite 202
Madison, Wisconsin 53703
608.442.2550

denver 1859 Wynkoop Street, Suite 300
Denver, Colorado 80202
303.556.4500

PROJECT INFORMATION

**OAKWOOD VILLAGE
UNIVERSITY WOODS
- SKILLED NURSING
FACILITY**

6165 Mineral Point Rd,
Madison, WI 53705

ISSUANCE AND REVISIONS

DATE	DESCRIPTION
10/30/2020	SCHEMATIC DESIGN
04/14/2021	LUDDGDPSIP SUBMITTAL



KEY PLAN

SHEET INFORMATION

**PROGRESS DOCUMENTS
NOT FOR CONSTRUCTION**

These documents reflect progress and intent and may be subject to change, including additional detail. These are not final construction documents and shall not be used for final bidding or construction-related purposes.

PROJECT MANAGER MO

PROJECT NUMBER 120290-01

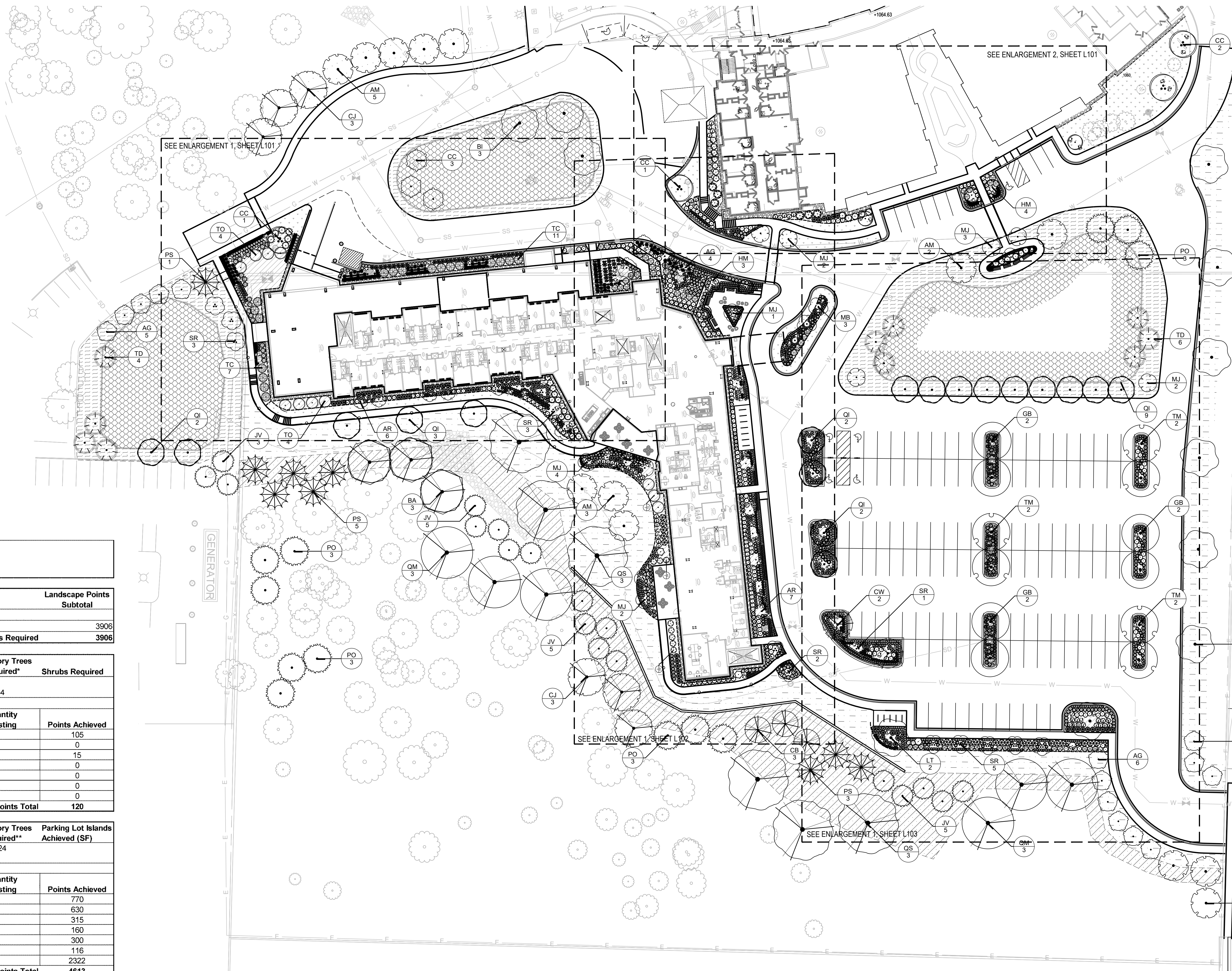
LANDSCAPE
PLAN

L100

© Epstein Uhen Architects, Inc.

LEGEND

	TURFGRASS SOD
	BARK MULCH
	STONE MULCH
	PRAIRIE SEED
	FESCUE SEED
	WOODLAND MIX SEED
	METAL EDGING



**Oakwood Village University Woods
Madison, WI**
14-Apr-21

Developed Lots	SF	Acres	Landscape Points Subtotal
Total Developed Area	245,374	5.63	
Landscape Points (5 pts/300 SF for first 5 acres, 1 pt/100 SF for additional)			3906
			Landscape Points Required 3906

Development Frontage (Genomic Drive)	LF	Overstory Trees Required*	Shrubs Required
Total LF of Street Frontage Between Parking/Building & Street	123	4	

Element	Point Value	Quantity Proposed	Quantity Existing	Points Achieved
Overstory Deciduous Tree	35	3		105
Tall Evergreen Tree	35			0
Ornamental Tree	15	1		15
Upright Evergreen Shrub	10			0
Shrub, deciduous	3			0
Shrub, evergreen	4			0
Ornamental Grass/Perennial	2			0
Development Frontage Points Total				120

Interior Parking Lots	SF	Overstory Trees Required**	Parking Lot Islands Achieved (SF)
Total Parking Lot Area	48,613	24	
Min. Parking Lot Islands (8%)	3,889		

Element	Point Value	Quantity Proposed	Quantity Existing	Points Achieved
Overstory Deciduous Tree	35	22		770
Ornamental Tree	15	42		630
Tall Evergreen Tree	35	9		315
Upright Evergreen Shrub	10	16		160
Shrub, deciduous	3	100		300
Shrub, evergreen	4	29		116
Ornamental Grass/Perennial	2	1161		2322
Interior Parking Lots Points Total				4613

General Site, Foundation, Screening

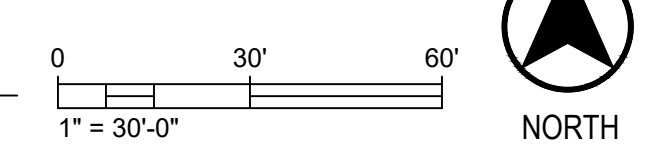
Element	Point Value	Quantity Proposed	Quantity Existing	Points Achieved
Overstory Deciduous Tree	35	38		1330
Tall Evergreen Tree	35	69		2415
Ornamental Tree	15	58		870
Upright Evergreen Shrub	10	5		50
Shrub, deciduous	3	229		687
Shrub, evergreen	4	115		460
Ornamental Grass/Perennial	2	1631		3262
Ornamental/Decorative Fence or Wall (4 pts/10 LF)	4			0
Foundation Plantings Total				9074

TOTAL LANDSCAPE POINTS 13807

* Two (2) ornamental trees or two (2) evergreen trees may be used in place of one (1) overstory deciduous tree.
** Two (2) ornamental deciduous trees may be substituted for one (1) canopy tree, but ornamental trees shall constitute no more than twenty-five percent (25%) of the required trees.

1 Landscape Worksheet
SCALE: NTS

2 Landscape Plan
SCALE: 1"=30'-0"





1 Hebron Oaks Site Restoration Plan
SCALE: 1" = 20'-0"

LEGEND

- TREE PROTECTION FENCE
- LIMIT OF DISTURBANCE
- TURF GRASS
- CONCRETE SIDEWALK
- PLANTING AREA
- SHADE TREE
- ORNAMENTAL TREE
- EVERGREEN TREE
- EXISTING TREE



milwaukee 333 East Chicago Street
Milwaukee, Wisconsin 53202
414.271.5350

madison 309 West Johnson Street, Suite 202
Madison, Wisconsin 53703
608.442.2590

denver 1899 Wynkoop Street, Suite 300
Denver, Colorado 80202
303.595.4500

PROJECT INFORMATION

**OAKWOOD VILLAGE
UNIVERSITY WOODS
- SKILLED NURSING
FACILITY**

6165 Mineral Point Rd,
Madison, WI 53705

ISSUANCE AND REVISIONS

DATE	DESCRIPTION
10/30/2020	SCHEMATIC DESIGN
04/14/2021	UDDGDPSP SUBMITTAL



KEY PLAN

SHEET INFORMATION

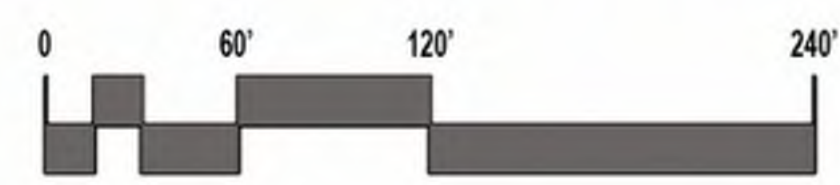
**PROGRESS DOCUMENTS
NOT FOR CONSTRUCTION**

These documents reflect progress and intent and may be subject to change, including additional detail. These are not final construction documents and shall not be used for final bidding or construction-related purposes.

PROJECT MANAGER MO
PROJECT NUMBER 120290-01

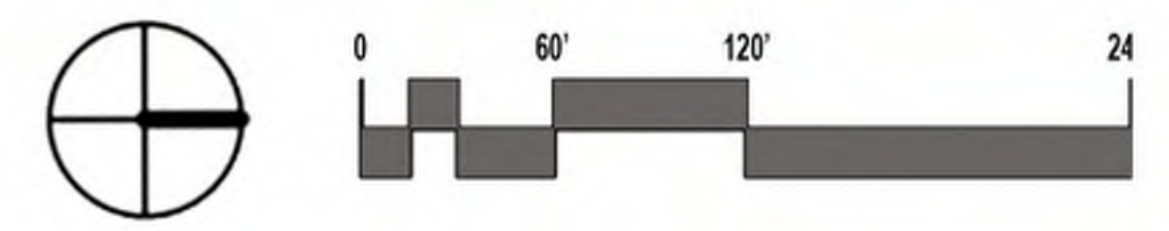
**HEBRON SITE
RESTORATION**

L400





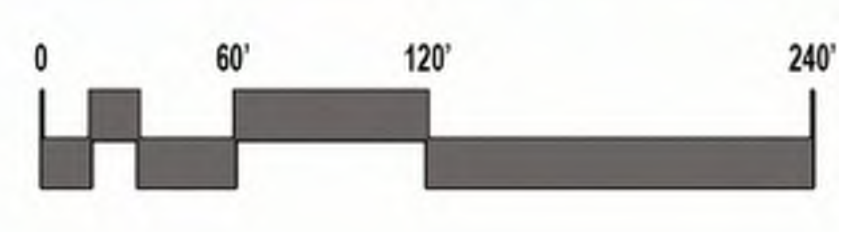
KEY
 ■ NEW SKILLED NURSING FACILITY





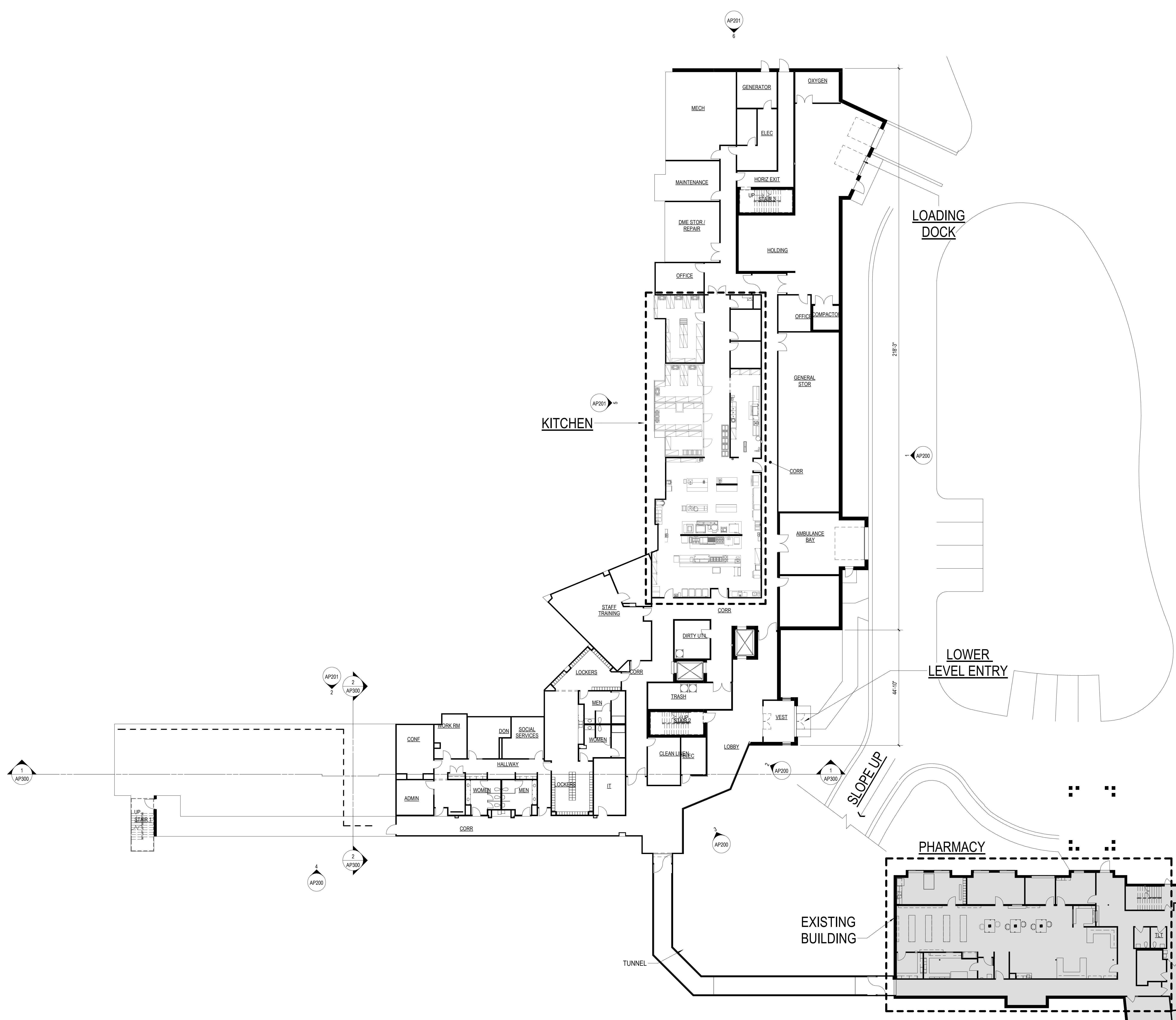
KEY

- NEW SKILLED NURSING FACILITY
- RAZE HEBRON (CHAPEL & BRIDGE TO REMAIN)

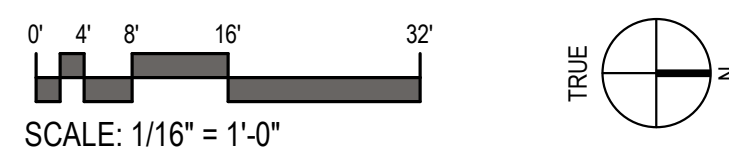


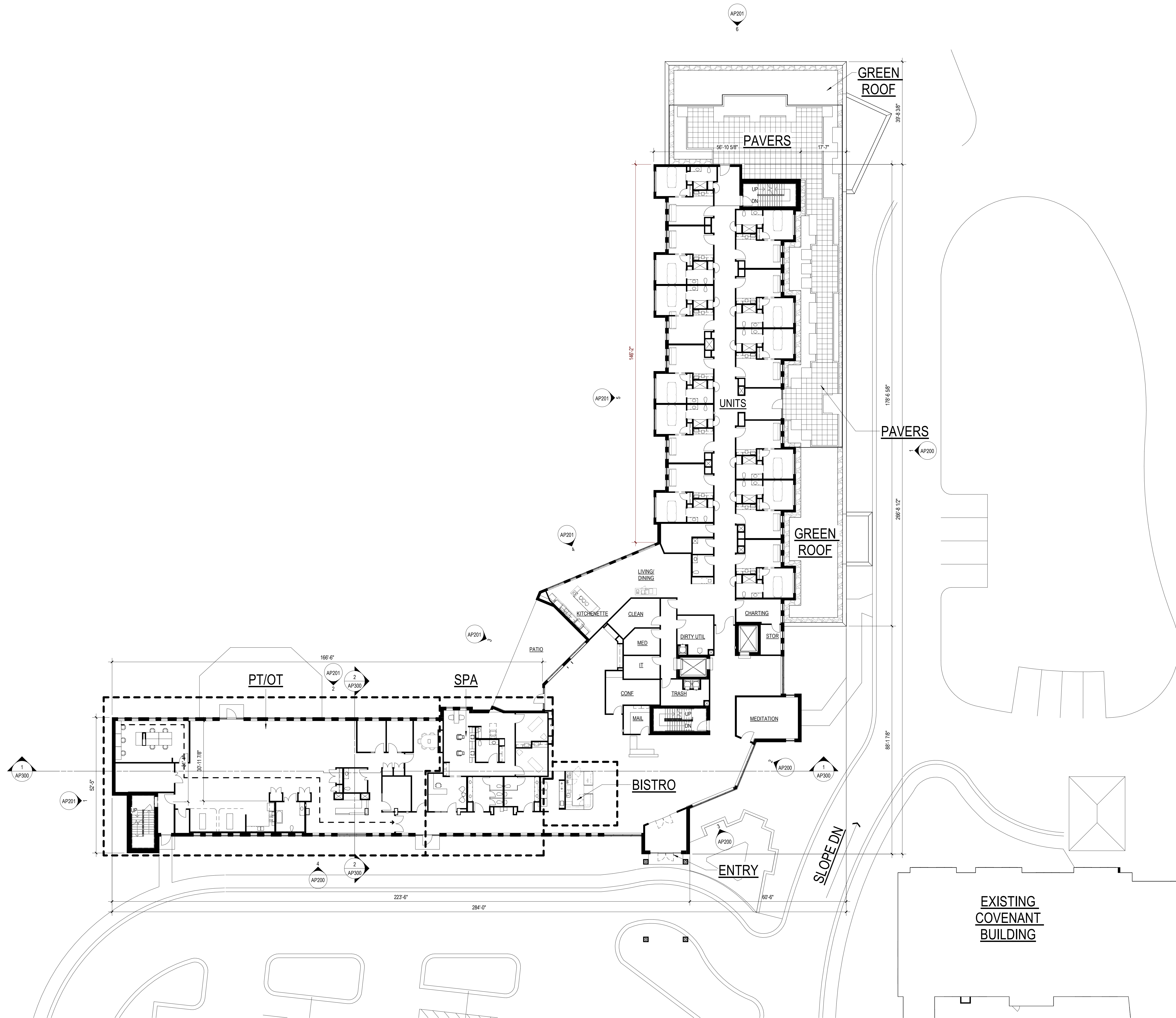
FUTURE BUILDING DEMOLITION PLAN



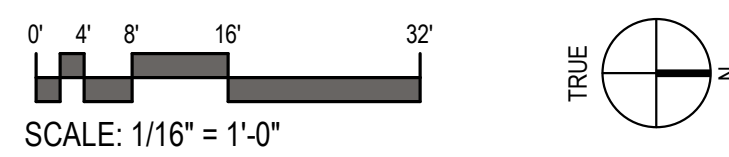


1 LOWER LEVEL FLOOR PLAN
1/16" = 1'-0"



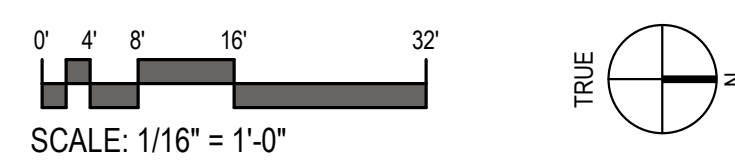


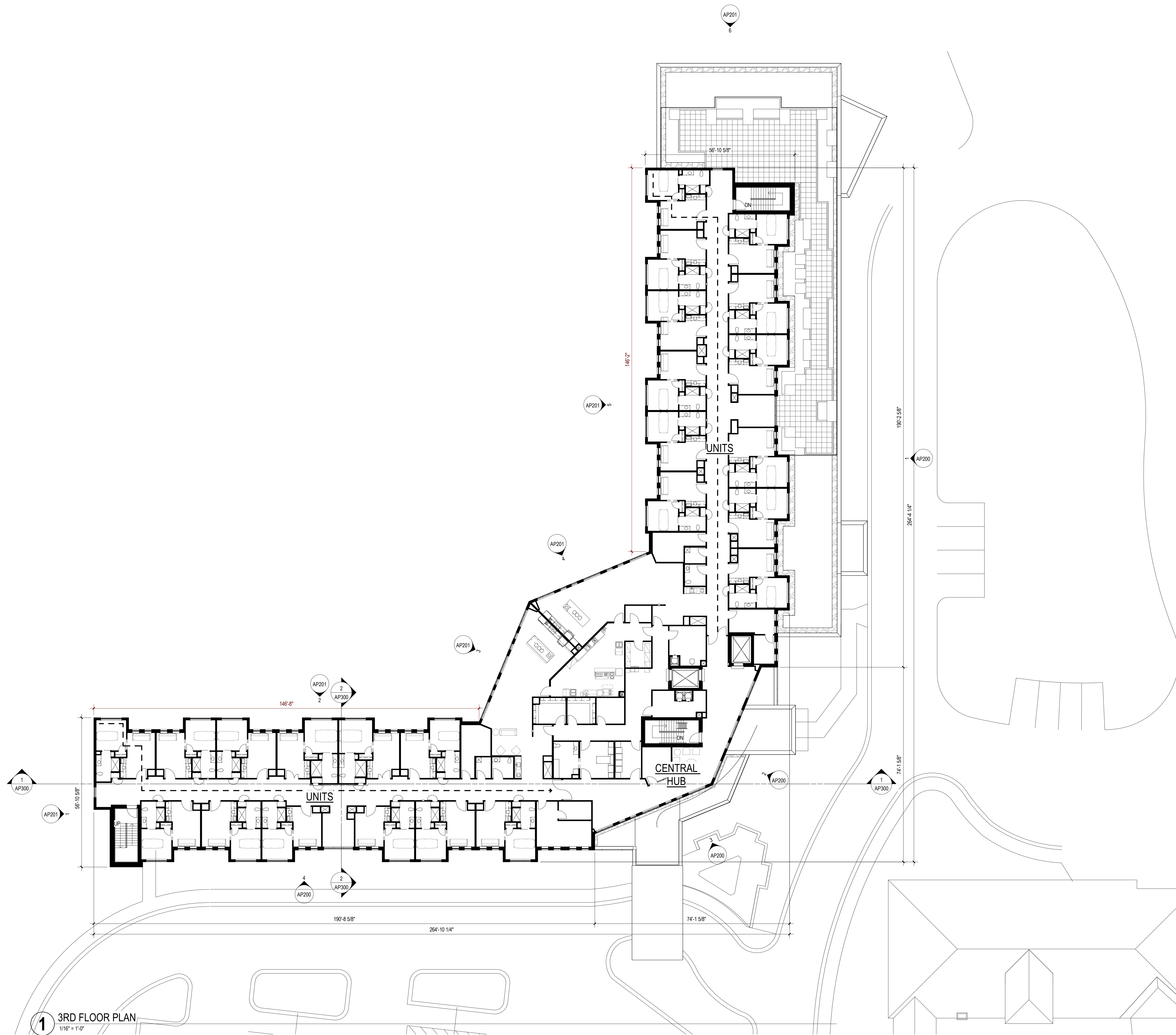
1 1ST FLOOR PLAN
1/16" = 1'-0"



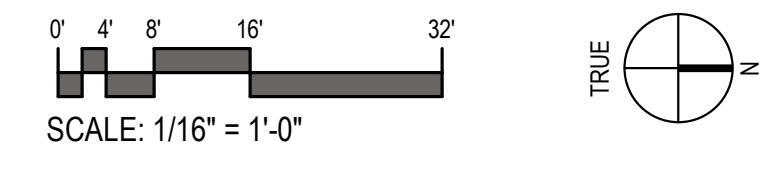


1 2ND FLOOR PLAN
1/16" = 1'-0"



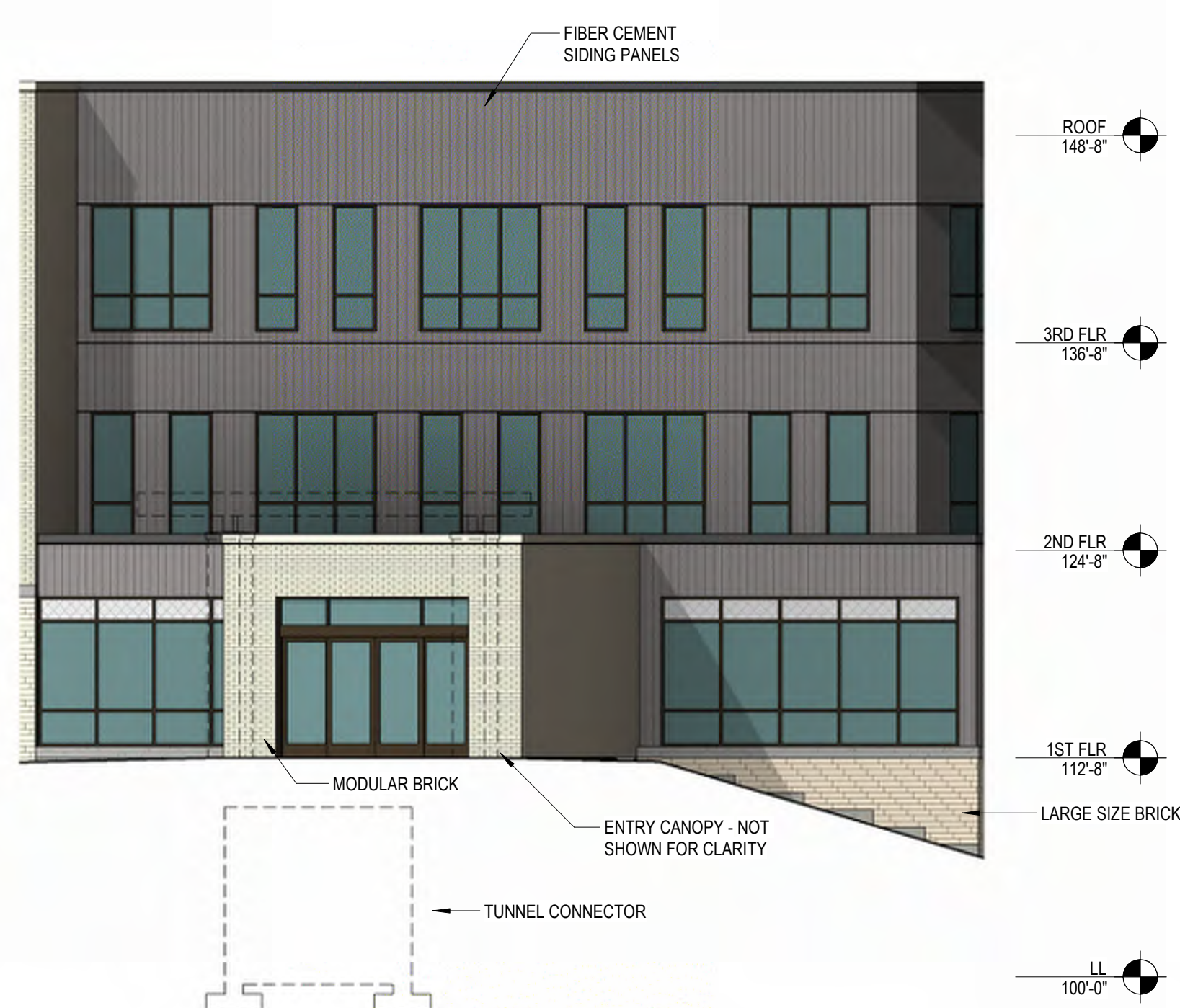


1 3RD FLOOR PLAN
1/16" = 1'-0"





4 AREA A - EAST ELEVATION
1/8" = 1'-0"



3 AREA C - NORTHEAST ELEVATION 2
1/8" = 1'-0"



2 AREA C - NORTHEAST ELEVATION 1
1/8" = 1'-0"



1 AREA B - NORTH ELEVATION
1/8" = 1'-0"

ELEVATIONS - COLOR



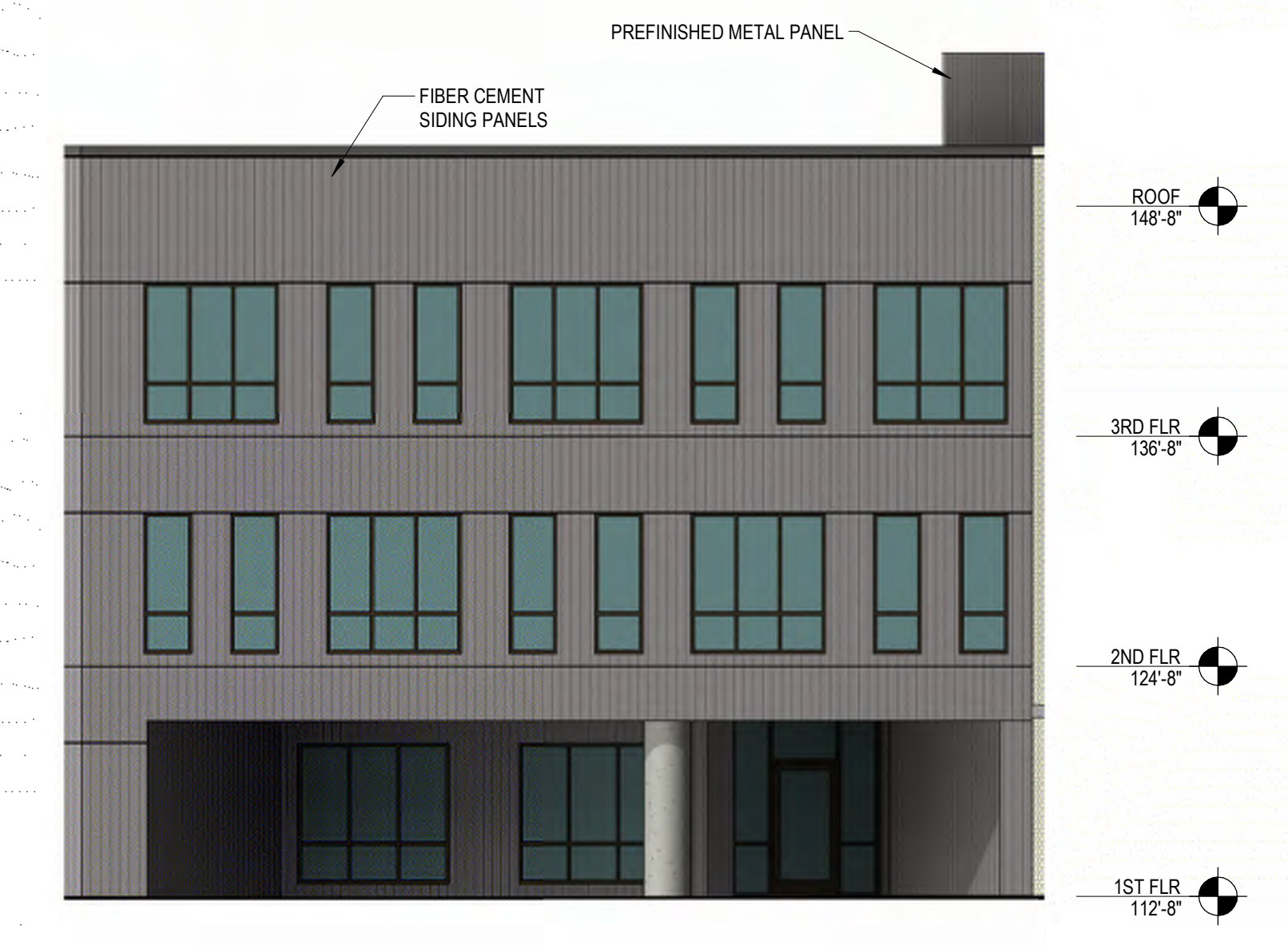
6 AREA B - WEST ELEVATION
1/8" = 1'-0"



5 AREA B - SOUTH ELEVATION
1/8" = 1'-0"



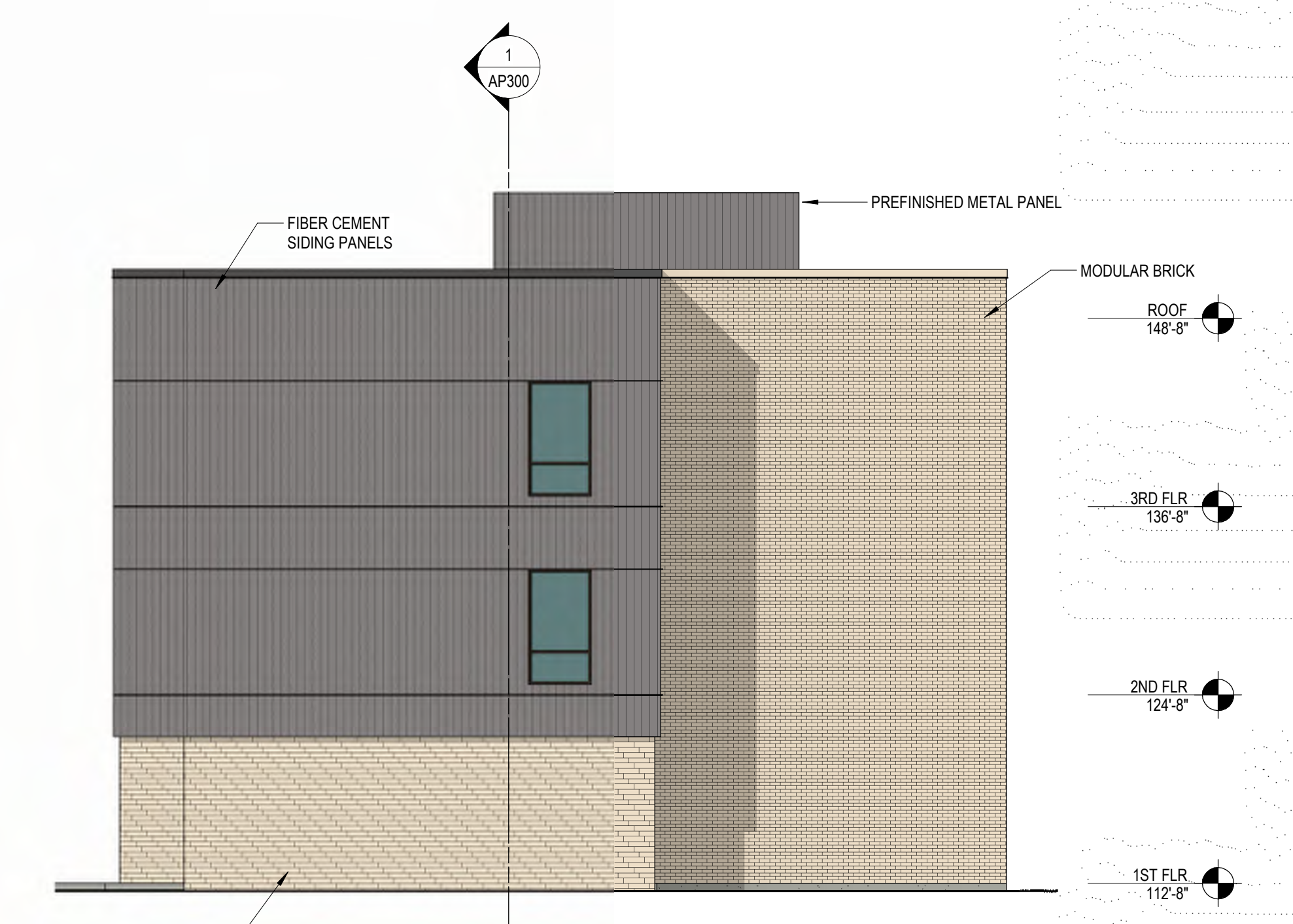
4 AREA C - SOUTHWEST ELEVATION 2
1/8" = 1'-0"



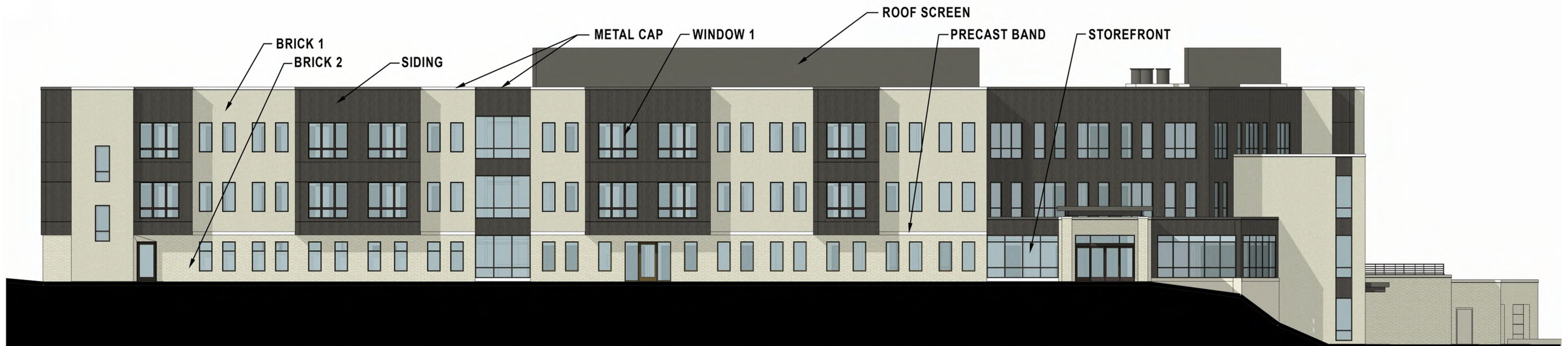
3 AREA C - SOUTHWEST ELEVATION 1
1/8" = 1'-0"



2 AREA A - WEST ELEVATION
1/8" = 1'-0"



1 AREA A - SOUTH ELEVATION
1/8" = 1'-0"



BRICK 1 (TOP)

Manufacturer: Interstate brick
 Size: Modular
 Color: Artic White

BRICK 2 (BASE)

Manufacturer: Interstate brick
 Size: 4x16
 Color: Artic White



SIDING

Manufacturer: Nichiha
 Size: 8" Vertical Panels
 Color: Vintagewood "Bark"



PRECAST BAND

Manufacturer: Stonecast
 Color: Limestone



METAL CAP/ROOF SCREEN

Manufacturer: Firestone
 Color: Dark Bronze/Almond



WINDOW 1

Manufacturer: Marvin
 Color: Ebony



STOREFRONT

Manufacturer: Kawneer
 Color: Dark Bronze



OAKWOOD VILLAGE UNIVERSITY WOODS-MAIN ENTRY



OAKWOOD VILLAGE UNIVERSITY WOODS-MAIN ENTRY



OAKWOOD VILLAGE UNIVERSITY WOODS-COVENANT DROP-OFF



OAKWOOD VILLAGE UNIVERSITY WOODS-WEST TERRACE





PHOTOS OF EXISTING SITE