

**APPLICATION FOR
URBAN DESIGN COMMISSION
REVIEW AND APPROVAL**

AGENDA ITEM # _____
Project # _____
Legistar # _____

DATE SUBMITTED: <u>August 11, 2010</u>	Action Requested
UDC MEETING DATE: <u>August 18, 2010</u>	<input checked="" type="checkbox"/> Informational Presentation
	<input type="checkbox"/> Initial Approval and/or Recommendation
	<input type="checkbox"/> Final Approval and/or Recommendation

PLEASE PRINT!

PLEASE PRINT!

PROJECT ADDRESS: 5702 Femrite Drive, Madison, WI 53718

ALDERMANIC DISTRICT: 16

OWNER/DEVELOPER (Partners and/or Principals) <u>City of Madison Police Department</u>	ARCHITECT/DESIGNER/OR AGENT: <u>Angus Young Associates - Jeff Hazekamp</u>
<u>Engineering Department, Randy Wiesner</u>	<u>555 S. River Street</u>
<u>1602 Emil Street / (608) 267-8679</u>	<u>Janesville, WI 53548</u>

CONTACT PERSON: Jeff Hazekamp
Address: Angus Young Associates
555 S. River Street
Phone: (608) 756-2326
Fax: (608) 756-0464
E-mail address: jeffh@angusyoung.com

TYPE OF PROJECT:

(See Section A for:)

- Planned Unit Development (PUD)
 - General Development Plan (GDP)
 - Specific Implementation Plan (SIP)
- Planned Community Development (PCD)
 - General Development Plan (GDP)
 - Specific Implementation Plan (SIP)
- Planned Residential Development (PRD)
- New Construction or Exterior Remodeling in an Urban Design District * (A public hearing is required as well as a fee)
- School, Public Building or Space (Fee may be required)
- New Construction or Addition to or Remodeling of a Retail, Hotel or Motel Building Exceeding 40,000 Sq. Ft.
- Planned Commercial Site

(See Section B for:)

- New Construction or Exterior Remodeling in C4 District (Fee required)

(See Section C for:)

- R.P.S.M. Parking Variance (Fee required)

(See Section D for:)

- Comprehensive Design Review* (Fee required)
- Street Graphics Variance* (Fee required)
- Other _____

*Public Hearing Required (Submission Deadline 3 Weeks in Advance of Meeting Date)

Where fees are required (as noted above) they apply with the first submittal for either initial or final approval of a project.

Police Training Center 5702 Femrite Drive

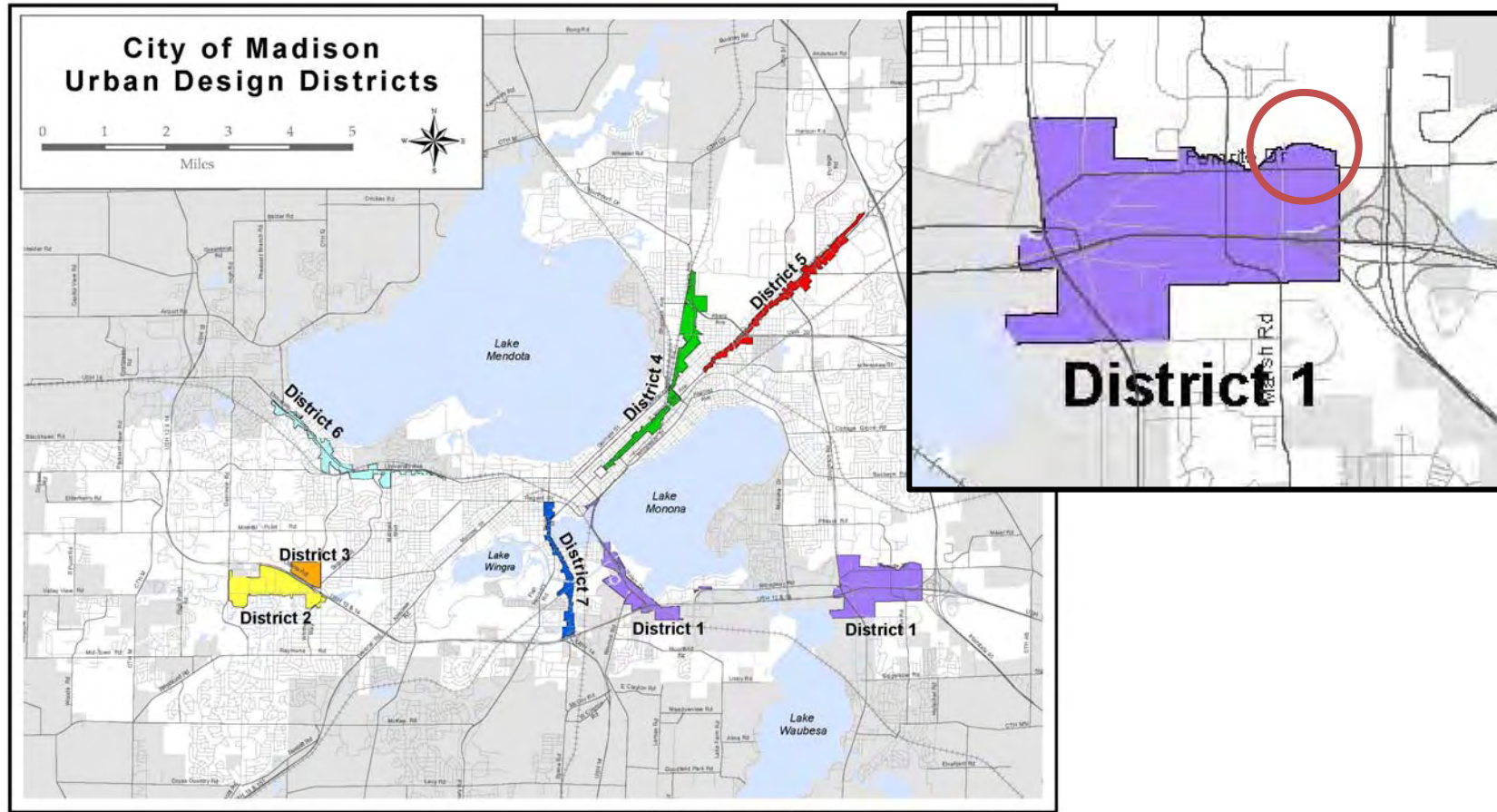
Urban Design Commission Submittal

August 11, 2010

Jeff Hazekamp, Angus Young Associates

jeffh@angusyoung.com (608) 756-2326

Urban Design District 1



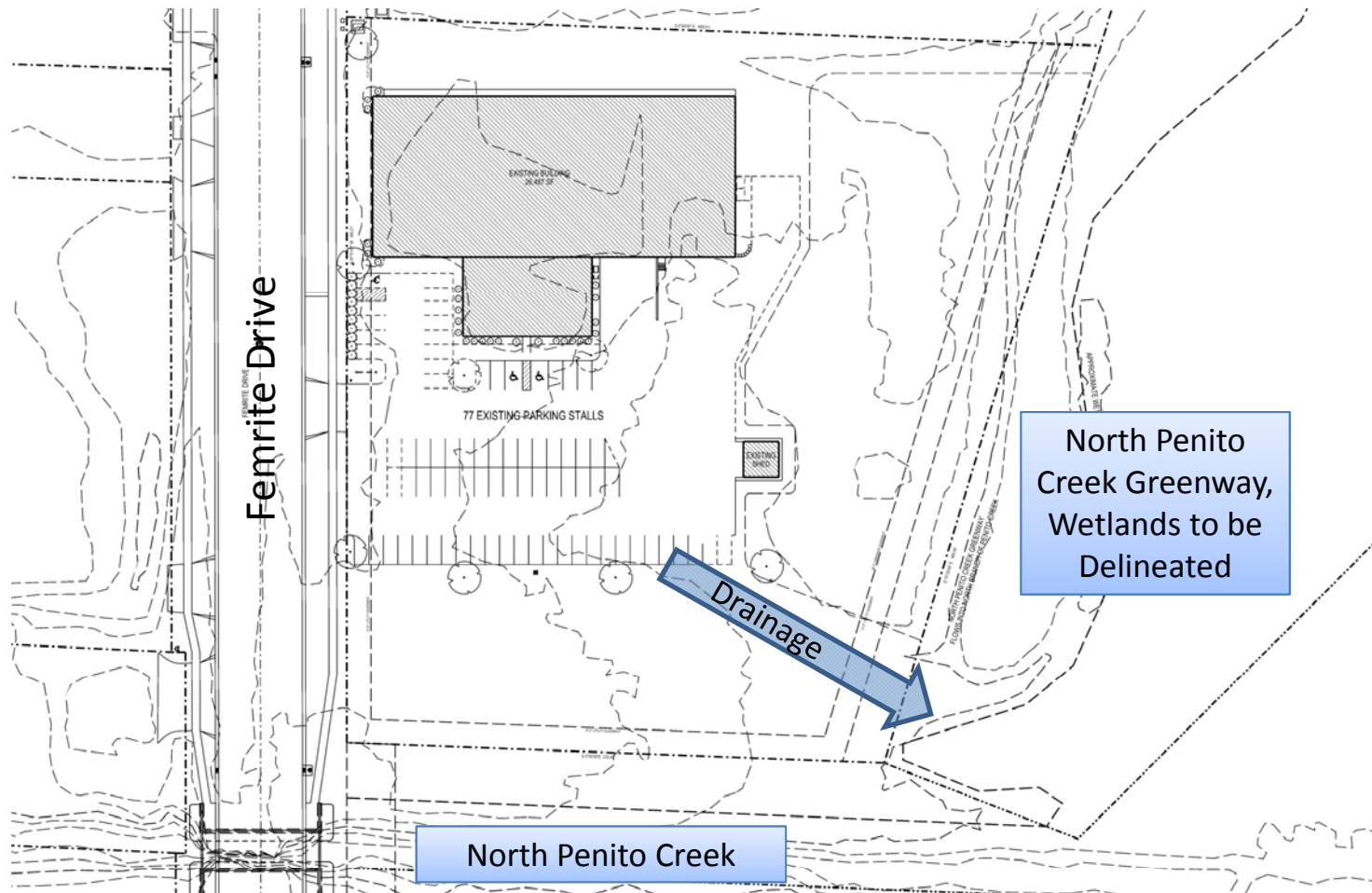
City of Madison Department of Planning & Community & Economic Development, Planning Unit, June 2008, 3th

Location Map



- Zoned M-1 – Limited Manufacturing District
- Industrial Building

Existing Site Plan



Existing Pictures



View from South along Femrite

Existing Pictures

View of South side of Existing Office



View of North side of Existing Office



Existing Pictures

View of Existing Warehouse from East Looking West



View of South wall of Existing Warehouse



Existing Pictures

View of Southwest corner of Existing Warehouse



View of West side of Existing Warehouse



Existing Pictures

View of North Elevation



View of East Elevation



Existing Pictures

**View of North Elevation and
Dumpster Enclosure from the West**



**View of North Elevation from the
East**



Existing Pictures

View of Northeast Existing Docks

View of Northeast Existing Docks



Existing Pictures

View of West Wall of Existing Garage



View to the West from Garage



Existing Pictures

View to the North



View to the Northeast



Existing Pictures

View from East Looking West



View From Southwest looking East



Surrounding Development Pictures



View from South

Surrounding Development Pictures



View to Southeast of property

Surrounding Development Pictures



View to South of property

Surrounding Development Pictures



View to Southwest of property

Surrounding Development Pictures



View to West of property

Surrounding Development Pictures



View to West of property

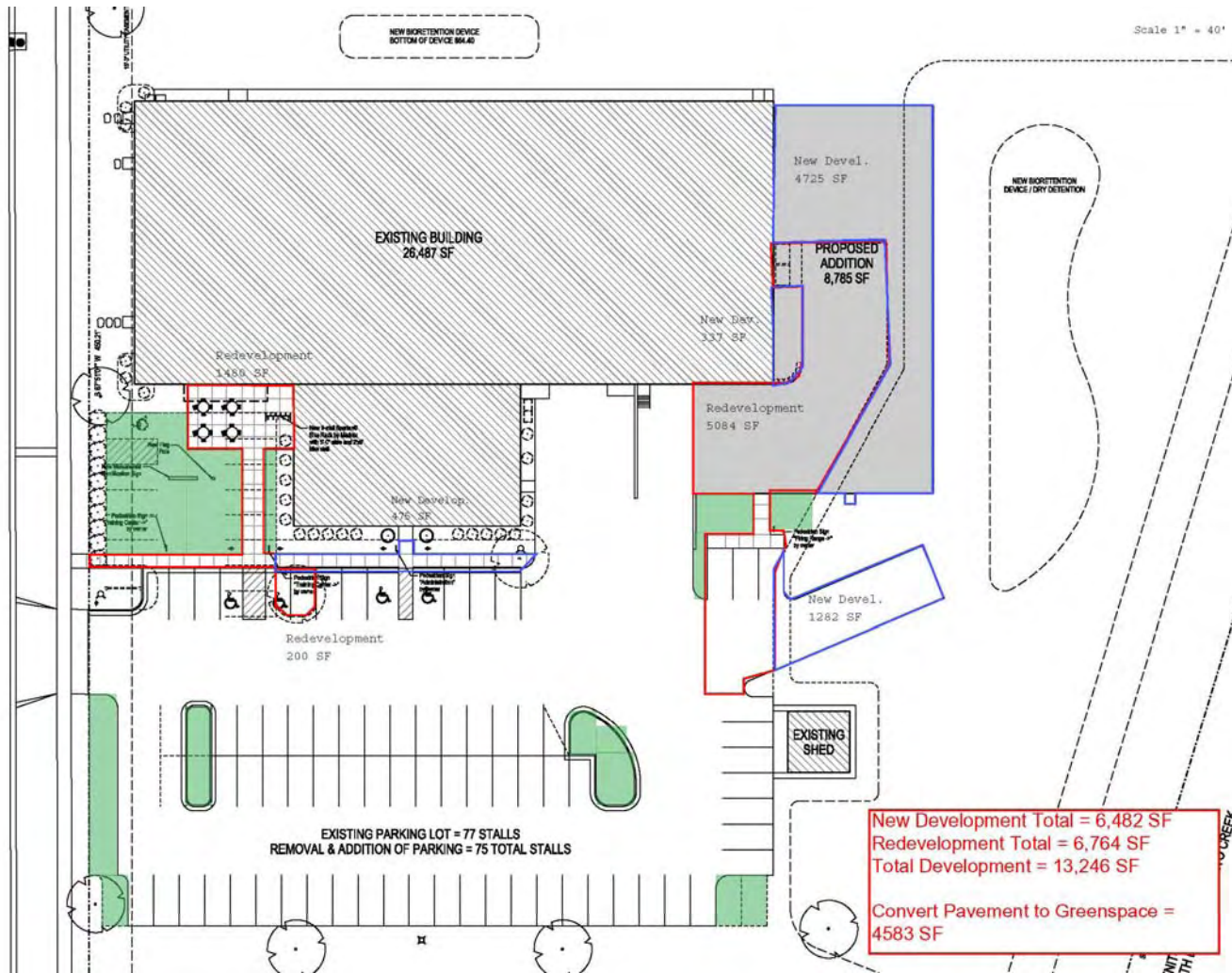
Project Narrative

- Master Plan for Renovation and Expansion of Police Training Facility over (3) phases
 - Phase 1: Exterior Façade upgrades and partial interior renovation
 - Phase 2: Site Improvements and 8,785 SF Range Addition
 - Phase 3: Remainder of interior renovations

Project Narrative

- Highlights of Project: Grading
 - Addition of stormwater management bioretention/ filtration devices (awaiting geotechnical report on soils)
 - Building addition is outside of 100-year floodplain, will match existing finish floor elevation

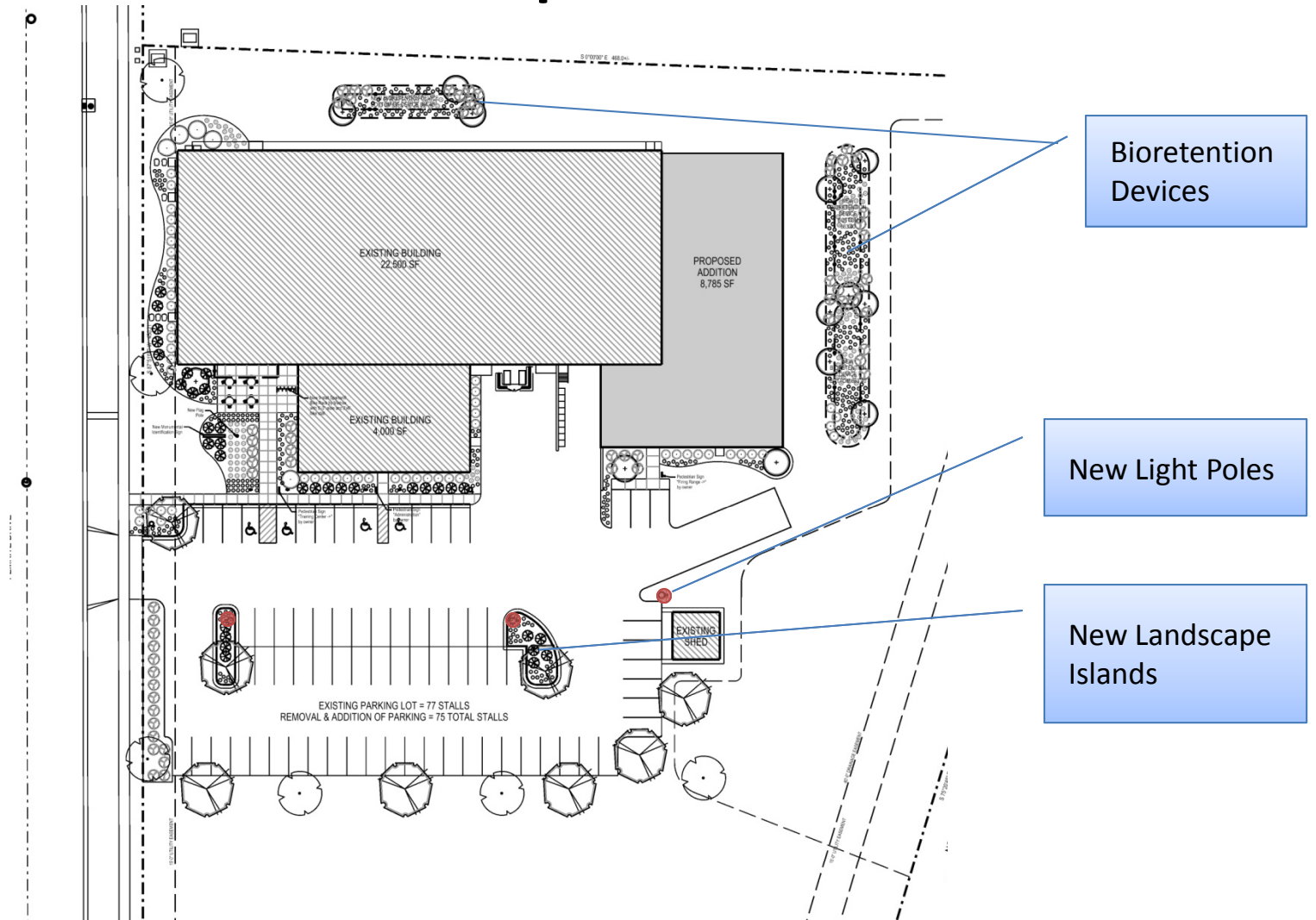
Development Areas



Project Narrative

- Highlights of Project: Landscaping
 - Addition of Landscape Islands to break up mass of paved area
 - Screening of existing parking lot through perimeter landscaping
 - Generous foundation landscaping
 - Bioretention/Filtration devices – incorporate native species
 - Existing native cover area to remain and be restored where disturbed during construction

Landscape Plan



Project Narrative

- Highlights of Project: Lighting
 - Upgrade in exterior lighting to 30'-0" High LED pole lighting with cut-off fixtures and
 - Decorative wall sconces on new building main entry at southeast



LED Light Cut Sheets

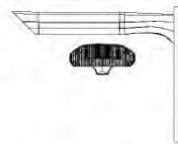
Job: _____
 Type: _____
 Notes: _____



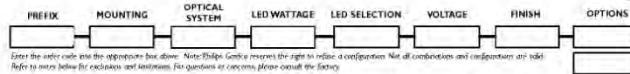
Page 1 of 3

LED Area Luminaires

Gardco Radiant LED area luminaires combine LED performance excellence and advanced Gardco LED thermal management technology with a distinctly contemporary architectural style to provide outdoor area lighting that is both energy efficient and aesthetically pleasing. The high performance LED optical systems are available with Type II, Type III, Type IV and Type V optical systems. Gardco's LED technology provides maximum light output and maximum energy savings. Additional savings can be realized with Dual Circuit - LED Array control.



Gardco Radiant LED luminaires provide full cutoff performance.



Enter the letter code into the appropriate box above. Note: Philips Gardco reserves the right to reduce or discontinue. Not all combinations and configurations are listed. Refer to notes below for conditions and restrictions. For questions or concerns please contact the factory.

PREFIX	MOUNTING	OPTICAL SYSTEM
RL Radiant LED Area Luminaire	1 Single Assembly 2 Twin Assembly 2@90 Twin Assembly at 90° 3 Triple at 90° 3@120 Triple at 120° 4 Quad Assembly	2 Type II 3 Type III 4 Type IV 5 Type V

LED WATTAGE AND LUMEN VALUES

Ordering Code	Average System Watts	LED Current (mA)	LED Selection	Luminaire Initial Absolute Lumens ¹							
				TYPE 2		TYPE 3		TYPE 4		TYPE 5	
				STANDARD	Watt Hrs	STANDARD	Watt Hrs	STANDARD	Watt Hrs	STANDARD	Watt Hrs
40LA	58.8	311	CW	3,792	3,215	3,932	3,379	3,944	3,593	3,921	
				NW	*	*	*	*	*	*	*
85LA	94.7	462	CW	5,314	4,516	5,717	4,886	5,473	5,137	5,313	
				NW	*	*	5,044	*	*	*	*
120LA	117.6	311	CW	7,337	5,945	7,556	6,436	7,387	6,838	7,312	
				NW	*	*	*	*	*	*	*
170LA	189.4	462	CW	10,237	8,296	11,621	9,061	10,616	9,609	10,851	
				NW	*	*	9,694	*	*	*	*

¹ Wattage may vary by +/- 10% due to LED non-uniformity, forward volt specification and ambient temperature. Wattage shown is average for 120V through 277V input. Actual wattage may vary by an additional +/- 10% due to actual input voltage.
² Hrs values shown are for luminaires that include the F52 or F52 external shield option, as appropriate for the LED Wattage.
³ LED arrays feature LEDs that provide 100 lumens per watt when operated at 350 mA. Average luminaire lumens per watt are tested and shown in the table above based on 47 to 67 lumens per watt, and are subject to the variance in tested above. Lumens values based on tests performed in compliance with IESNA (M 79).
 * Indicates that photometric data are in process. Contact opt@philipsgardco.com if any appropriate alternatives are required for design purposes.

1611 Clovis Barker Road, San Marcos, TX 78666
 (800) 227-0758 (512) 753-1000 FAX: (512) 753-7855 sikelighting.com
 © 2010 Koninkl Philips Electronics N.V. All Rights Reserved.
 Philips Gardco reserves the right to change materials or modify the design of its product without notification as part of the company's continuing product improvement program.
 G280-001/0710



RADIANT LED Area Luminaires

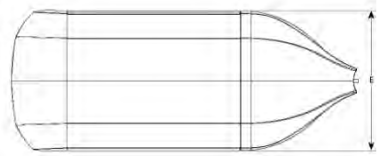
Page 2 of 3

LED SELECTION	VOLTAGE
CW Cool White - 6500°K - 75 CRI	UNIV Accepts 120V through 277V input, 50hz to 60hz.
NW Natural White - 4300°K - 75 CRI	347 Includes Auxiliary Transformer
	480 Includes Auxiliary Transformer

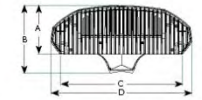
FINISH	OPTIONS
BRP Bronze Paint	F Fusing
BLP Black Paint	LF Line Fusing
WP White Paint	PC Photocontrol and Receptade
NP Natural Aluminum Paint	DL Diffusing Lens
BGP Beige Paint	HS1 External House Side Shield
OC Optional Color Paint	HS2 2 Part External House Side Shield
Specify Optional Color or RAL or OC-1GP or OC-RAL7024.	SPR Surge Protection for 120V through 277 Input
SC Special Paint	DCC Dual Circuit - LED Array Control
Specify Mast supply color chip.	MF Mast Arm Fitter
	PTF2 Pole Top Fitter for 2 3/8" Tenon
	PTF3 Pole Top Fitter for 3" to 3 1/2" Tenon
	PTF4 Pole Top Fitter for 3 1/2" to 4" Tenon
	BD1 Bird Deterrent Spike Kit - 60LA/85LA
	BD2 Bird Deterrent Spike Kit - 120LA/170LA

DIMENSIONS

LED Wattage Housing Length	EPA (Effective Projected Area)			Weight (Single)
	1	2	3/4	
60LA, 85LA 32"	.69 ft ²	1.38 ft ²	1.5 ft ²	3.6 lbs
120LA, 170LA 48"	1.0 ft ²	2.0 ft ²	3.0 ft ²	4.3 lbs
	.993 m ²	1.86 m ²	2.54 m ²	19.51 kg



Radiant	Inches	mm
A - All	4.80"	118.0mm
B - All	8.40"	212.0mm
C - All	11.40"	290.0mm
D - All	13.37"	339.5mm
E - All	13.75"	349.0mm
F - 60LA, 85LA	7.75"	196.8mm
F - 120LA, 170LA	4.0"	101.6mm



1611 Clovis Barker Road, San Marcos, TX 78666
 (800) 227-0758 (512) 753-1000 FAX: (512) 753-7855 sikelighting.com
 © 2010 Koninkl Philips Electronics N.V. All Rights Reserved.
 Philips Gardco reserves the right to change materials or modify the design of its product without notification as part of the company's continuing product improvement program.
 G280-001/0710



Police Training Center 5702 Femrite Drive

LED Light Cut Sheets



RADIANT

LED Area Luminaires

Page 3 of 3

SPECIFICATIONS

GENERAL DESCRIPTION: Gardco Radiant LED area luminaires combine LED performance excellence and advanced Gardco LED thermal management technology with a distinctly contemporary architectural style to provide outdoor area lighting that is both energy efficient and aesthetically pleasing.

HOUSING: The Gardco Radiant LED housing consists of a die cast aluminum arm adapter, an extruded aluminum housing body with an integral LED radiant thermal management system, and a die cast aluminum end cap. The structure is secured with lateral threaded stainless steel rods running the length of the housing to provide rigidity and unify the housing structure. Metallic screens are integrated to the top of the housing to prevent the buildup of dust, dirt and contaminants, while permitting required air flow for cooling. The housing length is 32", or 46" depending upon the LED wattage of the luminaire.

LED THERMAL MANAGEMENT: The Gardco Radiant LED housing design provides extruded aluminum integral thermal radiation fins in the upper housing, combined with lateral air ways, to provide the excellent thermal management so critical to long LED system life. Metallic screens are integrated to the top of the housing to prevent the buildup of dust, dirt and contaminants, while permitting required air flow for cooling.

LED PERFORMANCE:

PREDICTED LUMEN DEPRECIATION DATA ¹⁾		
Ambient Temperature °C	LED Wattage / Driver mA	L ₈₀ Hours ²⁾
25 °C	60LA 120LA / 311	130,000
	85LA 170LA / 462	95,000
40 °C	60LA 120LA / 311	100,000
	85LA 170LA / 462	80,000

¹⁾ Predicted performance derived from LED manufacturer's data and engineering design software. Based on ESDA LM-80 methodology. Actual experience may vary due to field application conditions.
²⁾ L₈₀ is the predicted time when LED performance degrades to 70% of initial lumen output.

OPTICAL SYSTEMS: Lensed LED arrays are set to achieve IES Type II, Type III, Type IV and Type V distributions. Individual LED arrays are replaceable.

ELECTRICAL: Luminaires are equipped with an LED driver that accepts 120V through 277V, 50Hz to 60Hz, input. Driver output is based on the LED wattage selected. Component-to-component wiring within the luminaire will carry no more than 80% of rated current and is listed by UL for use at 600 VAC at 302°F (150°C) or higher. Plug disconnects are listed by UL for use at 600 VAC, 15A or higher.

FULL CUTOFF PERFORMANCE: Full cutoff performance means a luminaire distribution where zero candela intensity occurs at an angle of or above 90° above nadir. Additionally, the candela per 1000 lamp lumens does not numerically exceed 100 (10 percent) at a vertical angle of 80° above nadir. This applies to all lateral angles around the luminaire.

CUTOFF PERFORMANCE: Cutoff performance means a luminaire distribution where the candela per 1000 lamp lumens does not numerically exceed 25 (2.5 percent) at an angle of or above 90° above nadir, and 100 (10 percent) at a vertical angle of 80° above nadir. This applies to all lateral angles around the luminaire.

1611 Clovis Barker Road, San Marcos, TX 78666
(800) 227-0758 (512) 753-1000 FAX: (512) 753-7855 [stelighting.com](http://www.stelighting.com)
© 2010 Koninklisse Philips Electronics N.V. All Rights Reserved.
Philips Gardco reserves the right to change materials or modify the design of its product without notification as part of the company's continuing product improvement program.
G200-001/0710



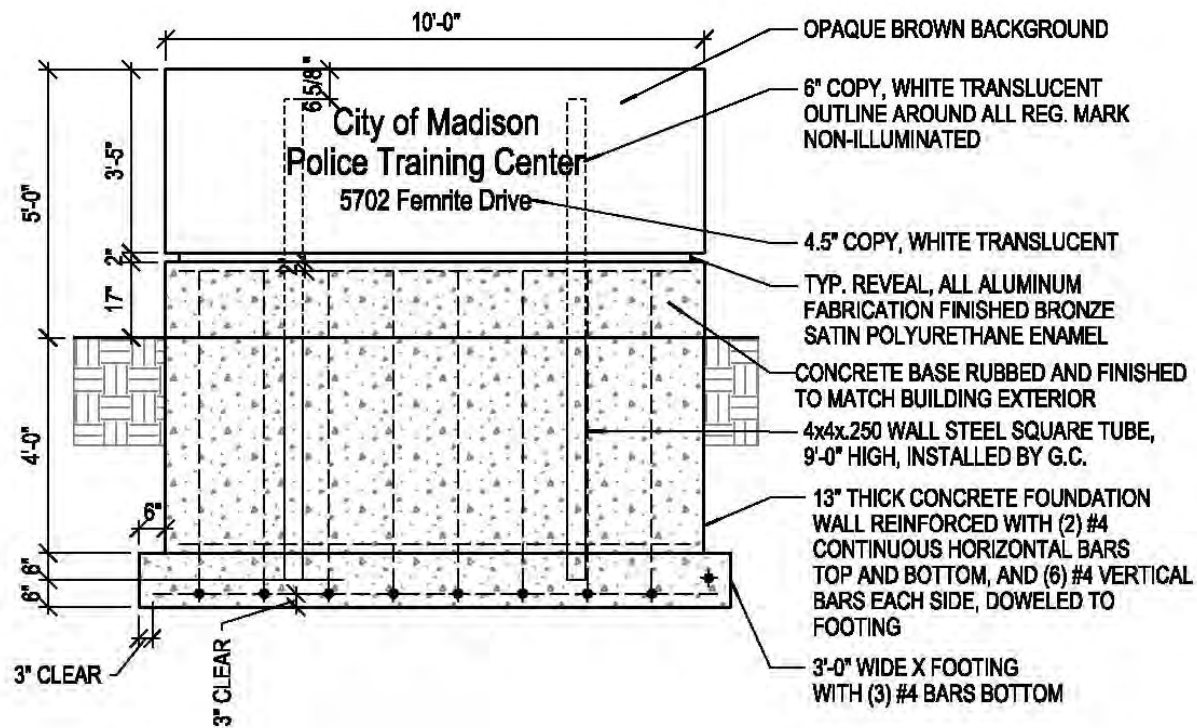
Project Narrative

- Highlights of Project: Utility Services
 - 2 new fire hydrants to meet Fire Department requirements with sprinkler system

Project Narrative

- Highlights of Project: Signage
 - New monument sign along Femrite, internally lit, to reflect building materials, 20' from south property line
 - Pedestrian-scale directional signage adjacent to building entrances

Monument Signage Detail



02

C801

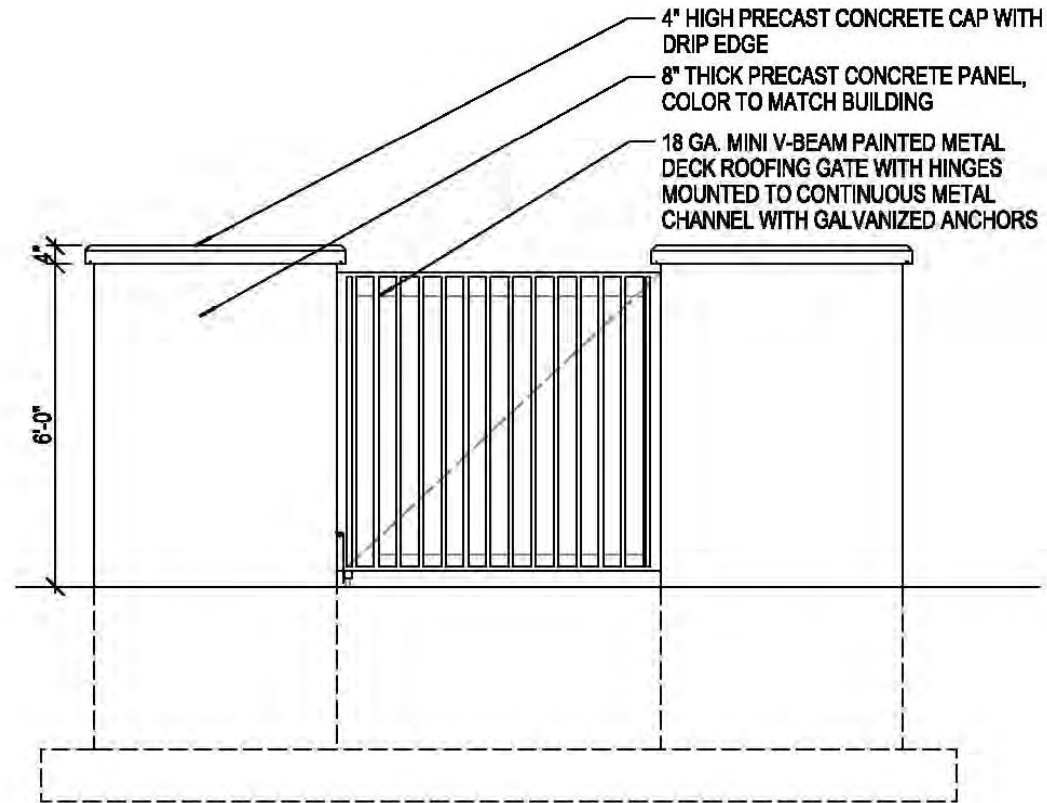
INTERNALLY LIT MONUMENT SIGN

SCALE: 1/4"=1'-0"

Project Narrative

- Highlights of Project: Screening
 - Removal of pavement to allow small berm and shrub hedge along Femrite Drive parking lot
 - Shade trees along east side of parking area to screen from view from interstate (adjacent to creek)
 - Dumpster screen (not visible from Femrite)

Dumpster Enclosure Detail



06
C801

DUMPSTER ENCLOSURE

SCALE: 1/4"=1'-0"

Project Narrative

- Highlights of Project:
Building Design
 - Existing building metal panel with EIFS on office, does not provide a well-insulated building envelope
 - Proposing EIFS to cover exterior of south elevation of building
 - Not anticipating rooftop units (removing existing), if adding then screening will be provided



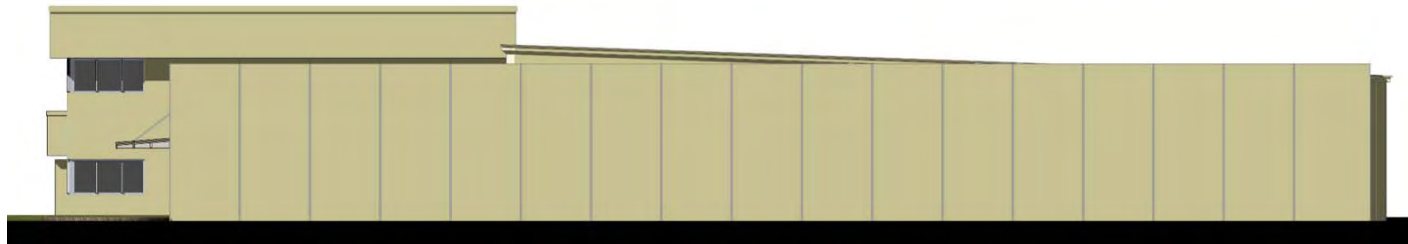
Proposed Building Rendering



Proposed Building Elevations



South Elevation

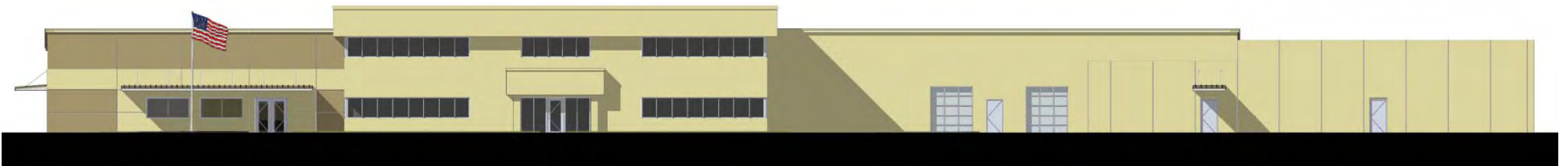


North Elevation

Proposed Building Elevations



West Elevation



East Elevation