



Brentwood Park
Volunteer Dirt Pump Track
The Project Request



Parks has received a request to allow a group of neighborhood volunteers to build a small dirt pump track at Brentwood Park. Brentwood is a 1.97 acre mini park located to the north of McPherson Street on Madison's north side. Current features at the park include a new playground, installed in 2019, a grass volleyball court, a drinking fountain, mature trees, a backstop and a full size basketball court. This additional recreational opportunity will not interfere with any existing uses, and no trees will be removed to accommodate the track.

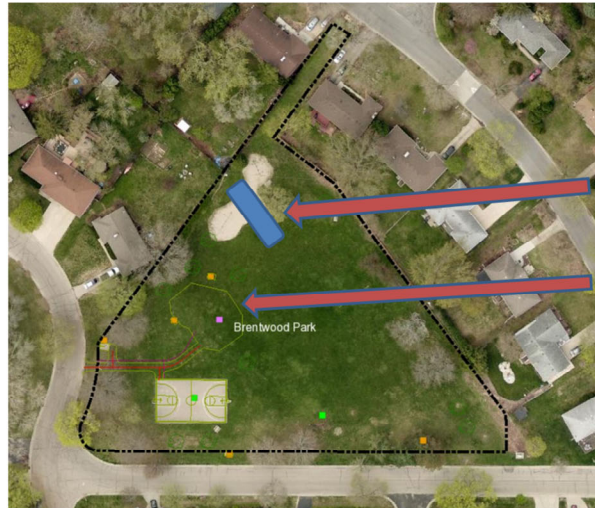


Brentwood Park
Volunteer Dirt Pump Track
Definition of a Dirt Pump Track



A dirt pump track is closed loop of track with a dirt trail surface. The track has a series of rollers on the straight sections and bermed (raised) curves on the turns. The trail surface at Brentwood will be about four feet wide. The track will be surrounded by grass and will have a grass area inside the loop. The demographic for this track are the children living in the neighborhood, looking for a fun and safe place to learn to ride a bike or to build on their existing bike riding skills. Adults may use the track as well, but the proposed size is more fitting for children.

play
**MADISON
PARKS**
Brentwood Park
Volunteer Dirt Pump Track
Site Specifics



**Proposed pump
track location:
Approx. 50 feet
long by 30 feet
wide**

**Current
playground
location.**

The track is proposed for the northeast corner of the park. This location used to host the old playground. The playground was moved to the southwest in 2019, and the old playground footprint was “healed over” with soil and grass. The track will be about 50 feet long and around 30 feet wide. The group has proposed to build the track in the summer of 2022. The track will take one to three weekends to install and the group has agreed to do the necessary maintenance to keep the track in rideable condition.