

Glenway Golf Park

Board of Park Commissioners

March 10, 2021



Introduction

- ▶ Task Force on Municipal Golf in Madison Parks evaluated the Golf Enterprise Program and released final report in 2020
 - ▶ The final report consisted of 10 recommendations and provided a vision for the future of municipal golf in Madison Parks.
- ▶ Michael and Jocelyn Keiser approached Madison Parks and Madison Parks Foundation with a vision for Glenway that will improve the golf course, park, environment, and community.
 - ▶ The proposed vision and design would implement nearly every recommendation from the Task Force.
- ▶ The Keiser Family has a successful track record in North America for creating courses that feature inclusive design, multi-use recreation, and long-term ecologically sound approach to the management of land.
- ▶ The proposed project will promote the vision of inclusivity through diversity of public land uses with strategically planned integration.
 - ▶ We expect that this approach will provide a roadmap for how Golf can thrive for many years to come by introducing more people to the great lands and sport.
- ▶ This generous donation will be the first capital investment the Golf Enterprise in many years.
 - ▶ The City does not currently have the resources to make these investments otherwise.

Initial Design Features

- ▶ Substantially increased natural areas
- ▶ Native tree plantings
- ▶ Strategically built community event space
- ▶ Integrated walking and winter trail system
- ▶ Enhanced play areas to serve all abilities
- ▶ Large scale putting course
- ▶ Expanded teeing areas for all levels of play
- ▶ Rebuild and redesign green complexes

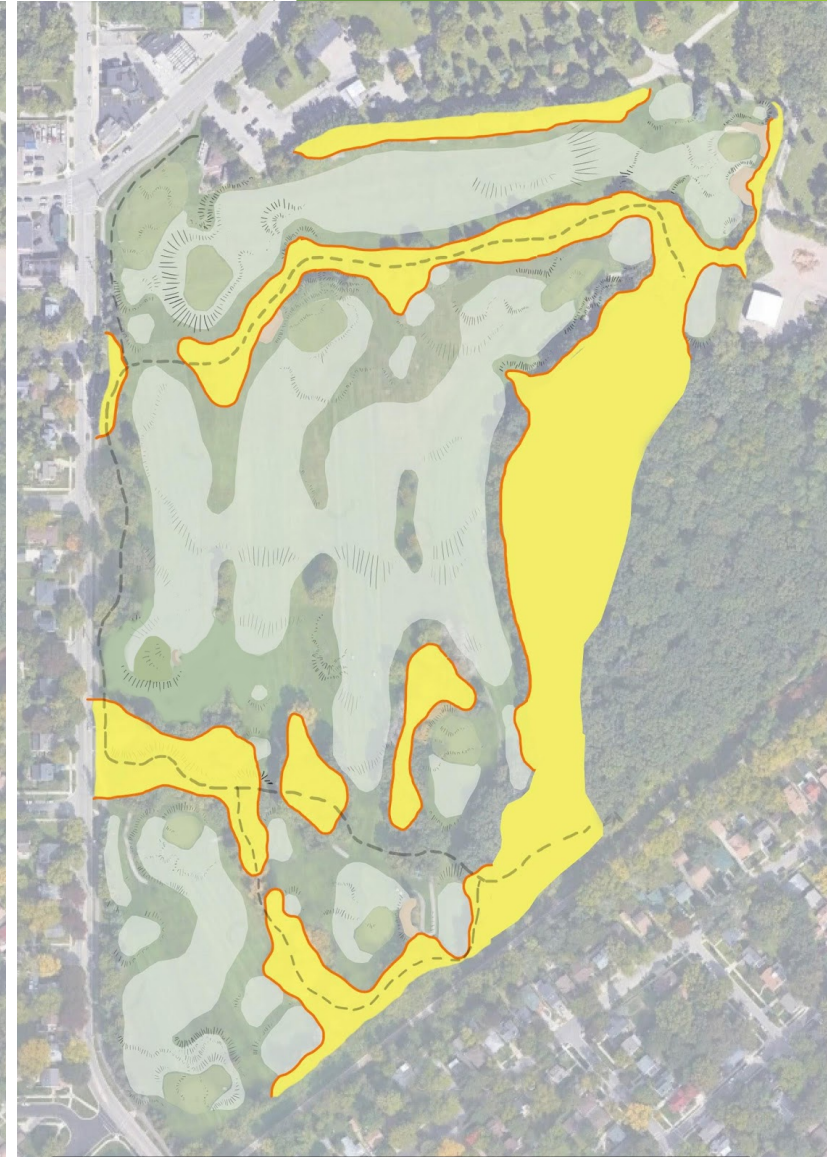


Native Area Restoration

- ▶ Currently, Glenway has very little native area which is maintained to adequate levels.
- ▶ Area of natural areas will increase by 1,400%
- ▶ This plan increase biodiversity with expansive native plantings and provide habitat for a variety of wildlife, pollinators, and other insects.
- ▶ Plan will improve stormwater management by establishing a sedge meadow in gully to aid in slowing of storm water into the Wingra Watershed
- ▶ Native trees will be planted and existing trees managed appropriately to promote long-term health and diversity.



Current Natural Area



Proposed Restoration Areas

Playability

- ▶ Design features would work to provide more options for all golfers for improved enjoyment of the game
 - ▶ Expanded teeing grounds - creates more options for distances
 - ▶ Larger, wider fairways provide missed shots and diverse options of play
 - ▶ Improved and increased green complexes will allow for a variety of play options, increased situational enjoyment with new contours



Team Approach

1. Master Plan Design Team

- ▶ To propose an Updated Master Plan for Glenway Golf Course that is consistent with the Task Force on Municipal Golf recommendations that is funded through a significant private donation. The team includes talented Landscape Architects, designers and golf experts.

2. Ecological Resources Team

- ▶ To assist the Design Team with ecologically based land management planning, based on the Wisconsin Idea, that promotes more natural areas into the Master Plan and to assist Parks staff in developing a sustainable land management plan that enhances the environmental benefits (e.g. stormwater retention, pollinator habitat) of the park property.

3. Program and Park User Team

- ▶ To assist the Design Team in park amenity planning to enhance diverse use of the park and to develop an operational programming plan that promotes enhanced use of the park (e.g. Sunday afternoons at the park, movies in the park) and provides equitable and affordable access to the golf course.

4. Turfgrass Science Team

- ▶ To assist the Design Team on turf management matters and to assist Parks staff in developing an Operating and Maintenance Plan that provides quality playing conditions and reduces reliance on resource inputs. This team includes representatives from the University of Wisconsin that bring world class knowledge, research, and support to the project.

Immediate Impacts

- ▶ Madison Parks will continue to operate 63 holes of Golf for 2021
 - ▶ Golf will be available to all users between our other three locations with limited restrictions
- ▶ Coordination efforts to minimize impacts on leagues, outings, and general play
 - ▶ Currently working with groups to support affected users such as leagues, First Tee, and various others
 - ▶ Provide each a smooth return to Glenway after the short closure in 2021
- ▶ 2021 will allow for long range strategic planning for operations of the enhanced 12-month recreational facility:
 - ▶ Golf Course Operations Plan to be approved by Golf Subcommittee
 - ▶ Comprehensive Programming Plan to be approved by Facilities Programs and Fees Subcommittee
 - ▶ Land Management Plan to be approved by Habitat Stewardship Subcommittee

Timeline & Meetings

- ▶ Introduction to Golf Subcommittee - January 28, 2021
- ▶ Introduction to Board of Park Commissioners - February 10, 2021
- ▶ Public Input Meeting - February 17, 2021
- ▶ Golf Subcommittee - February 22, 2021
- ▶ Introduction to Common Council - March 2, 2021
- ▶ Finance Committee - March 8, 2021
- ▶ Board of Park Commissioners - March 10, 2021
- ▶ Common Council - March 16, 2021

- ▶ Goal of April construction start
- ▶ Continue to operate 63 holes of Golf for the 2021 season
- ▶ Short term closure of Glenway Golf Course for 2021

Concept Master Plan for Approval

SITE PLAN

Proposed Master Plan

A – CHILDREN'S PLAY AREA AND SANDBOX NEAR PUTTING GREEN
Fun play area for kids next to the public putting course

B – PUTTING COURSE
Open and Free to Public

C – PROPOSED EXPANSION OF MANAGED NATIVE GRASS AREAS
Expand native restoration area

D – FORWARD TEES
Tees for all ages and ability

E – OUTDOOR COMMUNITY EVENT SPACE
#1 fairway is available at select times for neighborhood common space and for programmed events

H – EXPANDED PLAY AREAS (all fairways)
Widen fairways and approaches to provide more options off the tee and more interesting play into newly designed putting greens

I – EXPANDED TEES
Expanded tee areas at par-3s and new forward and back tee options for golfers of all abilities

LEGEND

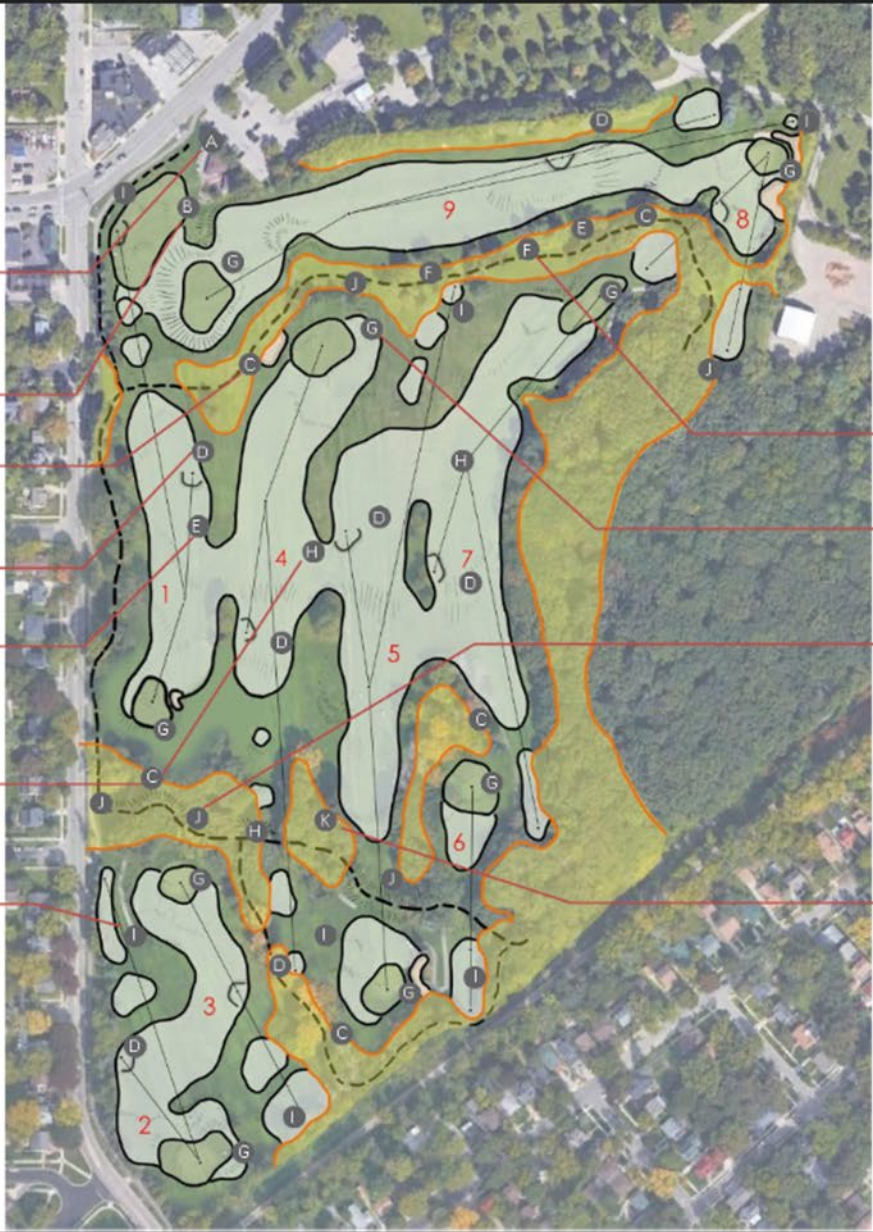
-  Golf Tees and Fairways
-  Golf Greens
-  Golf Rough
-  Golf Bunkers
-  Restored Prairie Areas
-  Community Trails

F – SELECT TREE PLANTING
Native tree plantings within the expanded naturalized areas

G – REBUILD AND REDESIGN GREEN COMPLEXES
introduce interesting golf architecture through rebuilding greens

J – INTEGRATED WALKING AND WINTER TRAILS
Establish new community trail through the golf course, linking with other local trails

K – SELECT PRUNING AND REMOVAL OF DEAD AND DAMAGED TREES
Arborist-guided removal and pruning of dead, diseased or damaged trees where necessary



GLENWAY GOLF COURSE