

DESIGN LOADINGS: (PRELIMINARY)

CATEGORY I STRUCTURE
 ROOF SNOW LOAD
 GROUND SNOW LOAD, P_g = 30 psf
 FLAT-ROOF SNOW LOAD, P_f = 26 psf
 SLOPED ROOF SNOW LOAD, P_s = 26 psf
 SNOW EXPOSURE FACTOR, C_e = 1.0
 SNOW IMPORTANCE FACTOR, I_s = 1.0
 THERMAL FACTOR, C_t = 1.2
 ROOF SLOPE FACTOR, C_s = 1.0
 UNBALANCED SNOW LOAD ON LEeward SIDE
 AT THE EAVE = 54 psf
 AT THE CROWN = 13 psf
 UNBALANCED SNOW LOAD ON THE WINDWARD SIDE = 0 psf
 WIND LOAD
 BASIC WIND SPEED = 90 mph
 WIND IMPORTANCE FACTOR, I_w = 1.0
 WIND EXPOSURE = B
 ANALYSIS METHOD: ANALYTICAL METHOD,
 ASCE 7-98, SECTION 6.5
 MWFRS - TRANSVERSE AND LONGITUDINAL WIND LOAD
 WINDWARD WALL LOAD = 12 psf
 LEEWARD WALL LOAD = 1 psf
 ROOF LOAD = -13.5 psf
 COMPONENT AND CLADDING LOADS
 WALL = 18 psf
 ROOF = -13.5 psf
 EARTHQUAKE DESIGN DATA
 SEISMIC FACTOR, I_e = 1.0
 SEISMIC DESIGN CATEGORY A
 SEISMIC USE GROUP = I
 SPECTRAL RESPONSE COEFFICIENTS
 S_{ds} = 0.096
 S_{d1} = 0.064
 SITE CLASS = D
 ANALYSIS PROCEDURE - SECTION 1604.4
 NO ROOF PONDING LOAD REQUIRED
 NO ROOF RAIN LOAD REQUIRED
 NO DRIFTING OR SLIDING LOADS
 ROOF DEAD LOAD - 3 psf

MATERIAL SPECIFICATIONS

- FRAMING- STEEL
 TUBES = A500 STEEL
 PLATES, ANGLES = A36 STEEL
 BASE SHOE PLATE AND TUBE- STAINLESS STEEL
- DECK- METAL DECK, G90 GALVANIZING, PRIME PAINT,
 EPIC METALS CORPORATION EP150 OR EQUAL
- ROOF- 24GA GALVANIZED STEEL STANDING SEAM,
 KYNAR 500 FINISH, 12 INCH WIDE PANELS, 1 INCH
 STANDING SEAM, SNAP-ON BATTEN, ROLL FORMED
 TO RADIUS OF SHELTER UC-1 ARCHITECTURAL SERIES
 ROOFING SYSTEM BY 'UNA-CLAD' OR EQUAL
- GLASS- 1/4" CLEAR TEMPERED, 1/16" THICK VINYL
 FOAM TAPE, CLOSED CELL, BLACK IN COLOR, DOUBLE
 STICK
- GLASS FILM- GRAFFITIGARD BY BEKAERT SPECIALTY
 FILMS
- PAINT-
 ABRASIVE BLAST
 PRIMER- 991 ZINC PRIMER
 INTERMEDIATE COAT- 66 SERIES EPOXY
 FINISH COAT- 13 SERIES URETHANE
- BENCH LUMBER- LPE OR PURPLEHEART, 2x4 AND 1x4,
 5/4S, EASED EDGE
- LIGHT- TO BE DETERMINED
- DIGITAL SIGN- PROVIDED BY MADISON METRO,
 INSTALLED BY CONTRACTOR
- GROUT- NON-SHRINK, 1000PSI MIN AT 28 DAYS
- EXPANSION ANCHORS- 1/2" DIA BY 4 3/4" LONG
 STAINLESS STEEL POWER-BOLT BY POWERS
 FASTENERS OR EQUAL BY KWIK BOLT, SIMPSON, OR
 ITW RAMSET/REDHEAD
- NUT INSERTS- 430 STAINLESS STEEL, RIVNUT OR EQUAL
- RIVETS- STEEL, BUTTON HEAD

TYPICAL STEEL SHELTER FRAMING MEMBERS

- COLUMNS - T6 3.5 x 3.5 x 3/16"
- CURVED ROOF MEMBERS AT GRID LINES 1 AND 3 - T6 6 x 4 x 3/16"
- ROOF CROSS MEMBERS AT GRID LINES A AND F - T6 6 x 4 x 3/16"
- HORIZONTAL WALL MEMBERS - T6 4 x 2 x 1/8"
- GLASS STOPS - 3/4" x 3/4" x 1/8" ANGLE
- ALL MEMBER CONNECTIONS SHALL BE WELDED UNLESS NOTED OTHERWISE

BOX NOTES

- COLUMN
- ARM REST
- BENCH
- DIGITAL SIGN ABOVE
- BENCH BRACKET
- GLASS
- HORIZONTAL WALL MEMBER
- COLUMN MOUNTED LIGHT FIXTURE
- METRO ID MAP IN A HINGED FRAME ASSEMBLY FOR ACCESS
- ROOF OUTLINE
- BASE SHOE
- ELECTRIC WIRE ROUTED UP THROUGH COLUMN BY EC, PROVIDE 3/4" DIAMETER HOLE IN FRAMING FOR WIRE TO PASS THROUGH

ARCHITECTURAL SYMBOLS

- DETAIL OR SECTION CUT
- REVISION IDENTIFICATION
- ELEVATION CONTROL POINT

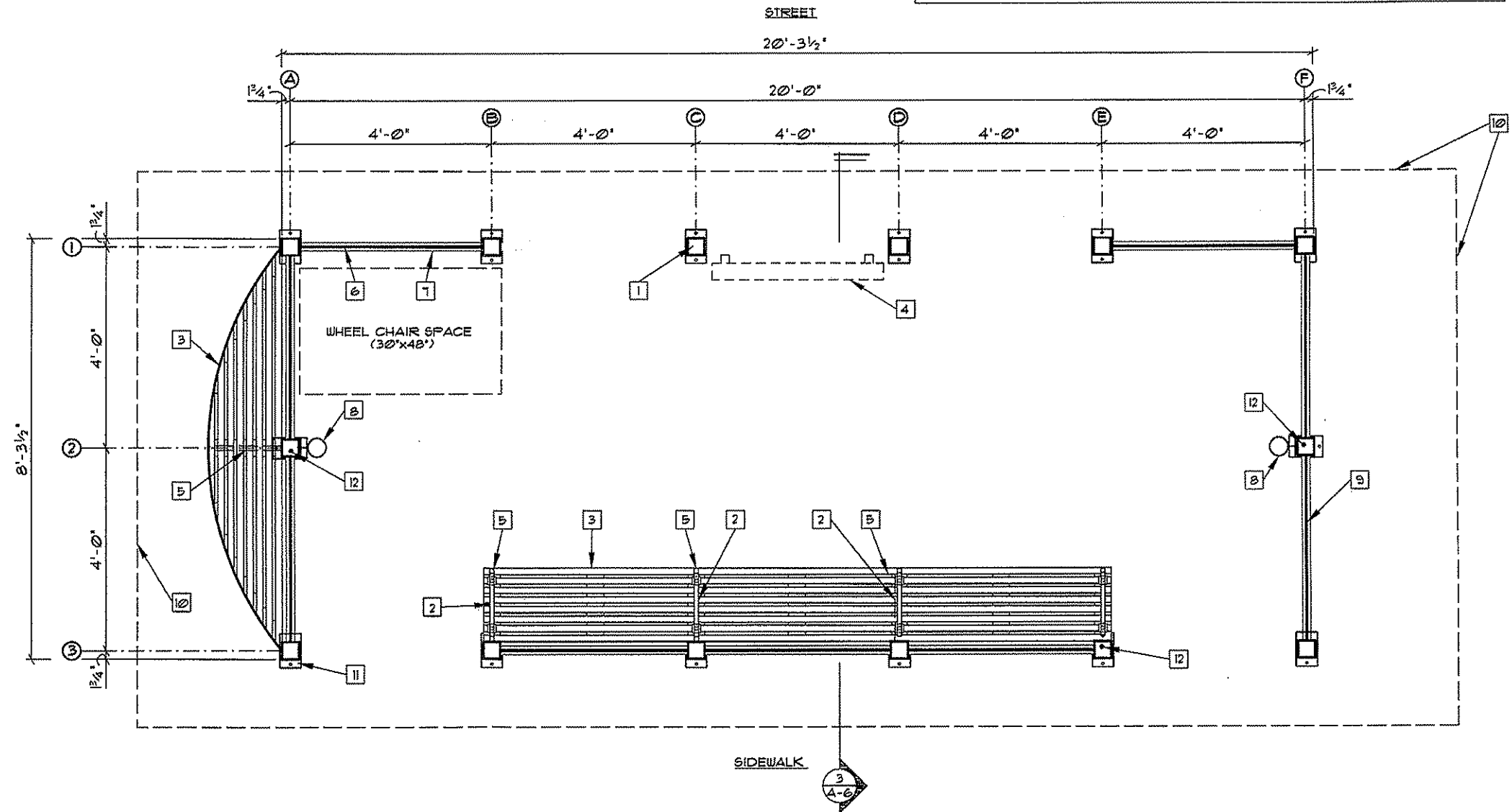
GENERAL NOTES

- A TOTAL OF 4 SHELTERS SHALL BE FABRICATED AND ERECTED. ALL 4 SHELTERS SHALL BE IDENTICAL.
- ALL THE STEEL SHELTER FRAMING MEMBERS SHALL BE PAINTED.
- PROVIDE HAND HOLES IN THE COLUMNS SCHEDULED FOR ELECTRIC WIRING TO BE ROUTED. SEE DETAIL X/A-X.

**CITY OF MADISON
 CAPITOL SQUARE BUS SHELTERS**

INDEX OF DRAWINGS

- A-1 BUS SHELTER FLOOR PLAN AND MATERIAL SPECIFICATIONS
- A-2 BUS SHELTER ROOF PLAN
- A-3 BUS SHELTER ROOF FRAMING PLAN
- A-4 BUS SHELTER ELEVATIONS
- A-5 BUS SHELTER ELEVATIONS
- A-6 BUS SHELTER CROSS-SECTION AND DETAILS
- A-7 'ALTERNATE BID' - ROOF PLAN
- A-8 'ALTERNATE BID' - ROOF FRAMING PLAN
- A-9 'ALTERNATE BID' - CROSS-SECTION AND DETAILS



FLOOR PLAN

SCALE 3/4" = 1'-0" (22x34)
 SCALE 3/8" = 1'-0" (11x17)

**- PRELIMINARY -
 NOT FOR CONSTRUCTION**

TRANSPORTATION • MUNICIPAL
 DEVELOPMENT • ENVIRONMENTAL
 1230 South Industrial Parkway, WI 53713
 608-355-2771 1-800-362-4993 Fax: 608-355-2770
 © 2006 PROFESSIONAL SERVICES

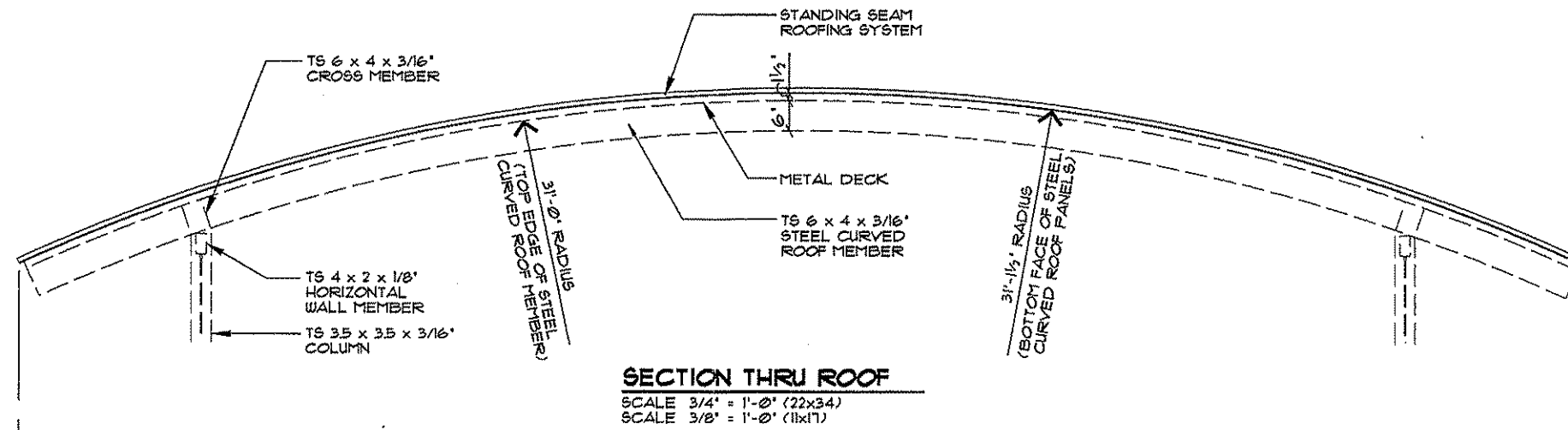
MSA
 PROFESSIONAL SERVICES

PROJECT NO.	3130405
DATE	APRIL 20, 2006
SCALE	AS SHOWN
DESIGNED BY	AL/NKC
CHECKED BY	AJS
CADD FILE NO.	3130405a1.dgn
PLT DATE	04/20/06
PLT TIME	

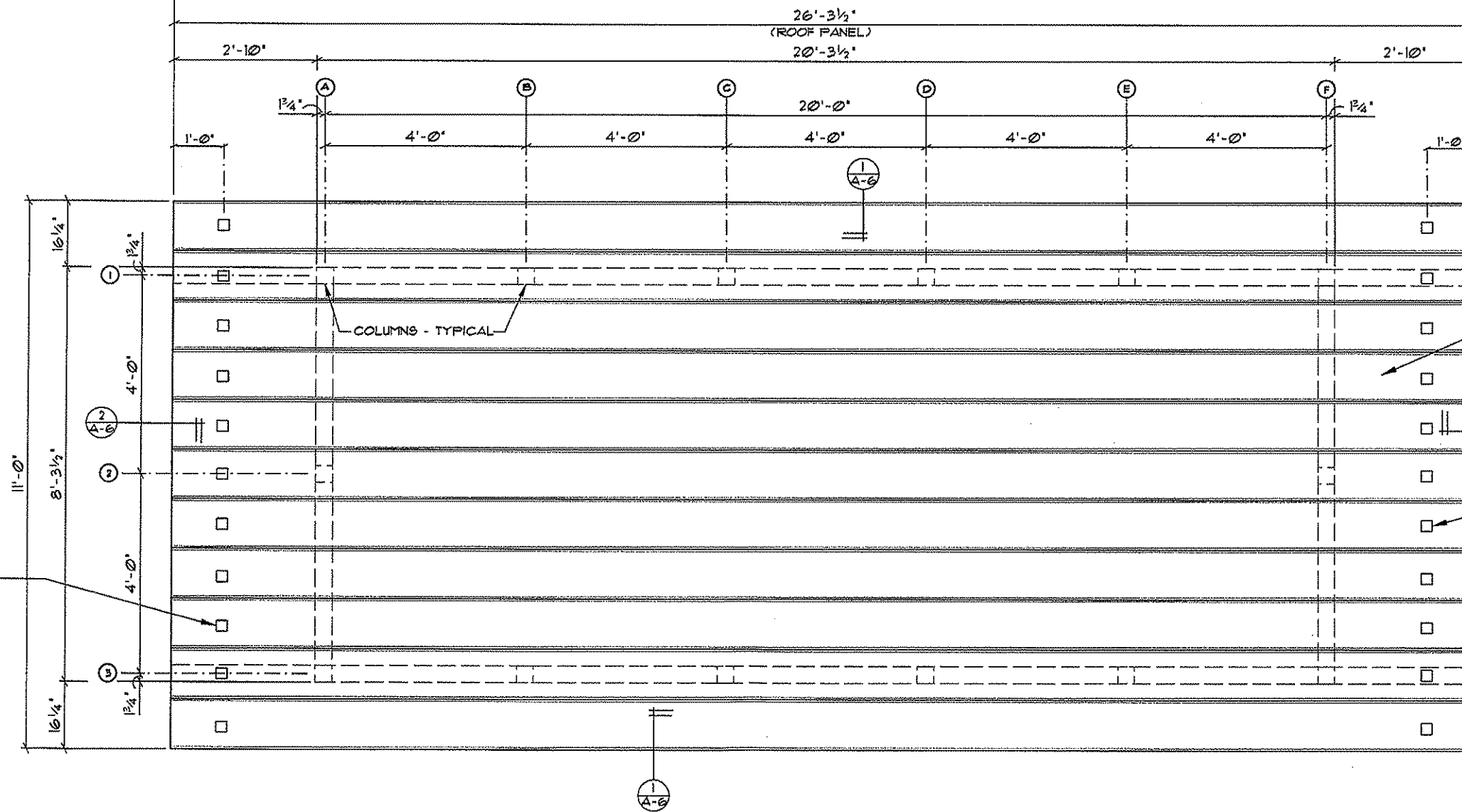
FLOOR PLAN
 CITY OF MADISON
 CAPITOL SQUARE BUS SHELTERS
 MADISON, WISCONSIN

FILE NO.
 3130405
 SHEET
A-1

G:\PROJECTS\310\5\313\3130405-BUS SHELTER\CADD\



SECTION THRU ROOF
 SCALE 3/4" = 1'-0" (22x34)
 SCALE 3/8" = 1'-0" (11x17)



ROOF PLAN
 SCALE 3/4" = 1'-0" (22x34)
 SCALE 3/8" = 1'-0" (11x17)

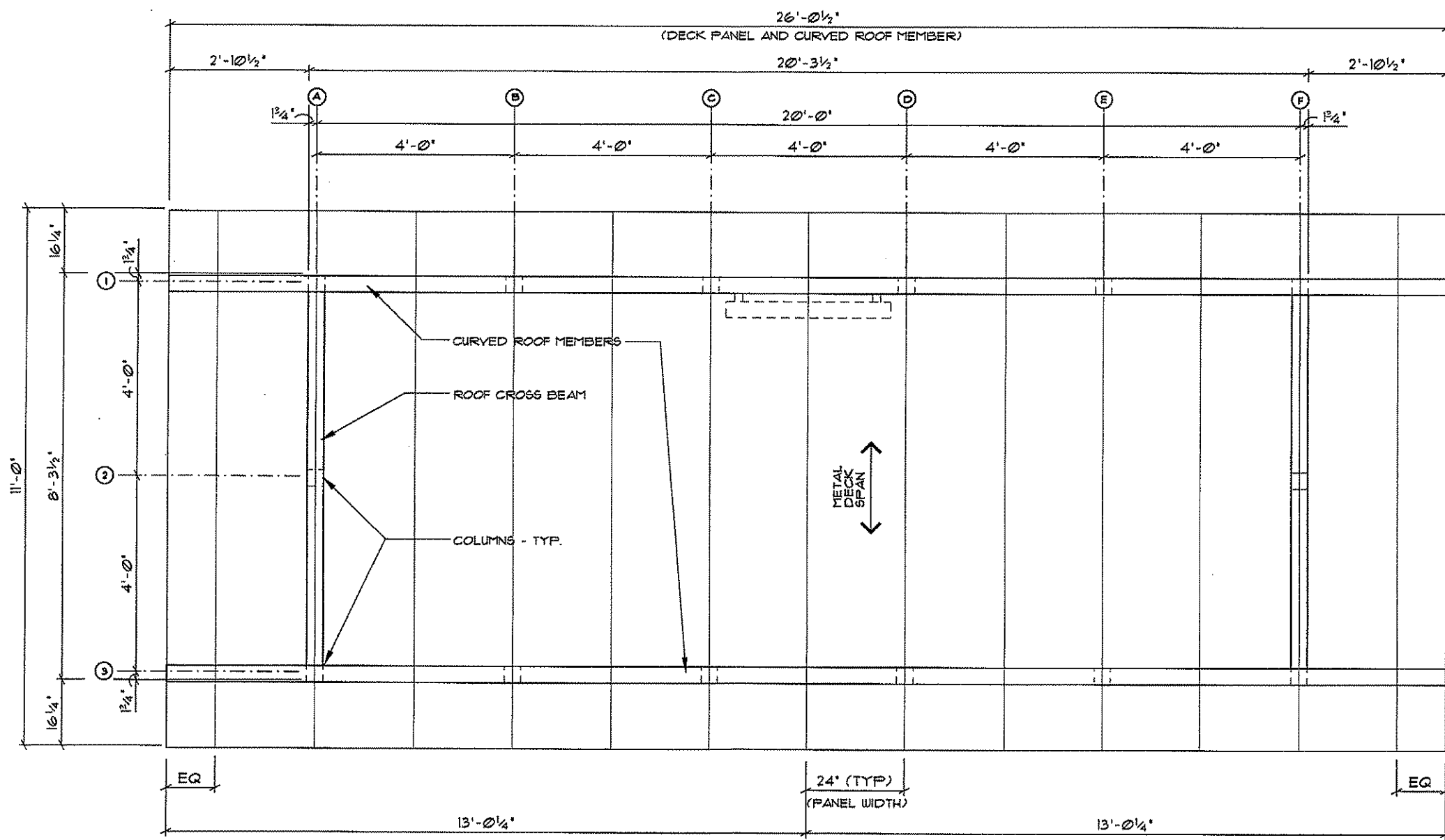
CLEAR POLYCARBONATE SNOW AND ICE GUARDS AT 12' O.C.

STANDING SEAM ROOF PANEL SYSTEM

CLEAR POLYCARBONATE SNOW AND ICE GUARDS AT 12' O.C.

BY	DATE	NO.	PROJECT NO.	DATE	SCALE
AL/KKC	APRIL 20, 2006		3130405	APRIL 20, 2006	AS SHOWN
DESIGNED BY	DATE	NO.	PROJECT NO.	DATE	SCALE
AJ/S	04/20/06		3130405	APRIL 20, 2006	AS SHOWN

- PRELIMINARY -
 NOT FOR CONSTRUCTION

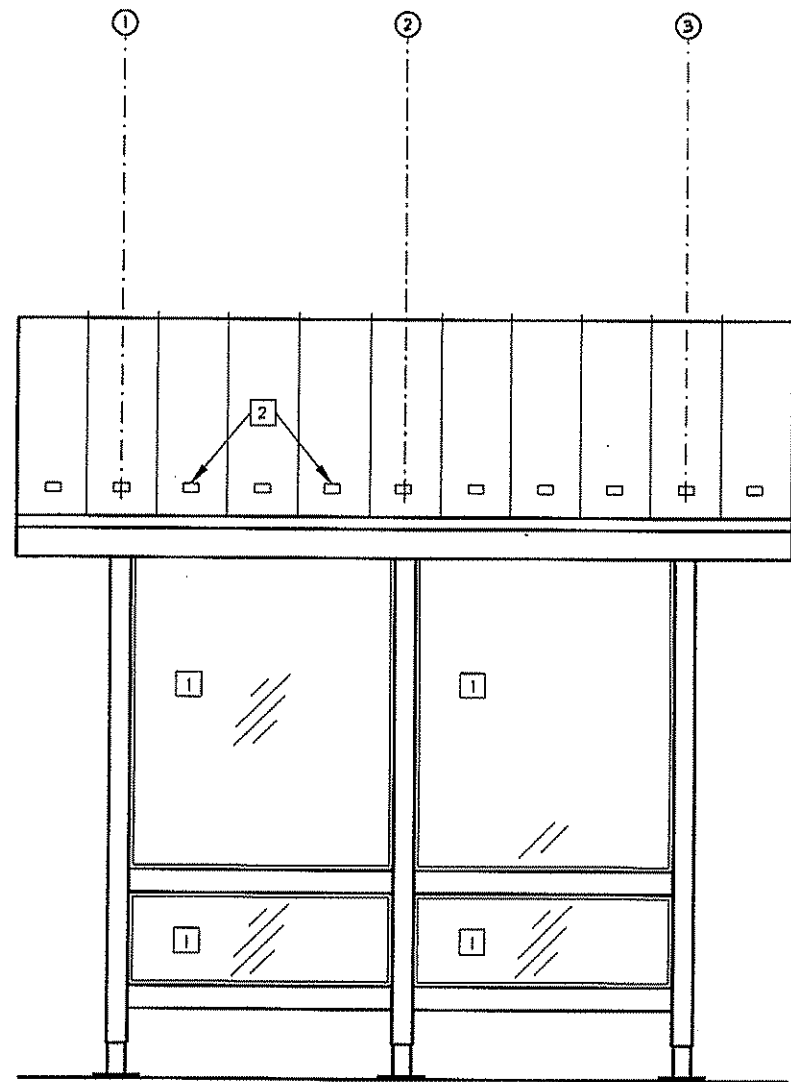


ROOF FRAMING PLAN
 SCALE 3/4" = 1'-0" (22x34)
 SCALE 3/8" = 1'-0" (11x17)

**- PRELIMINARY -
 NOT FOR CONSTRUCTION**

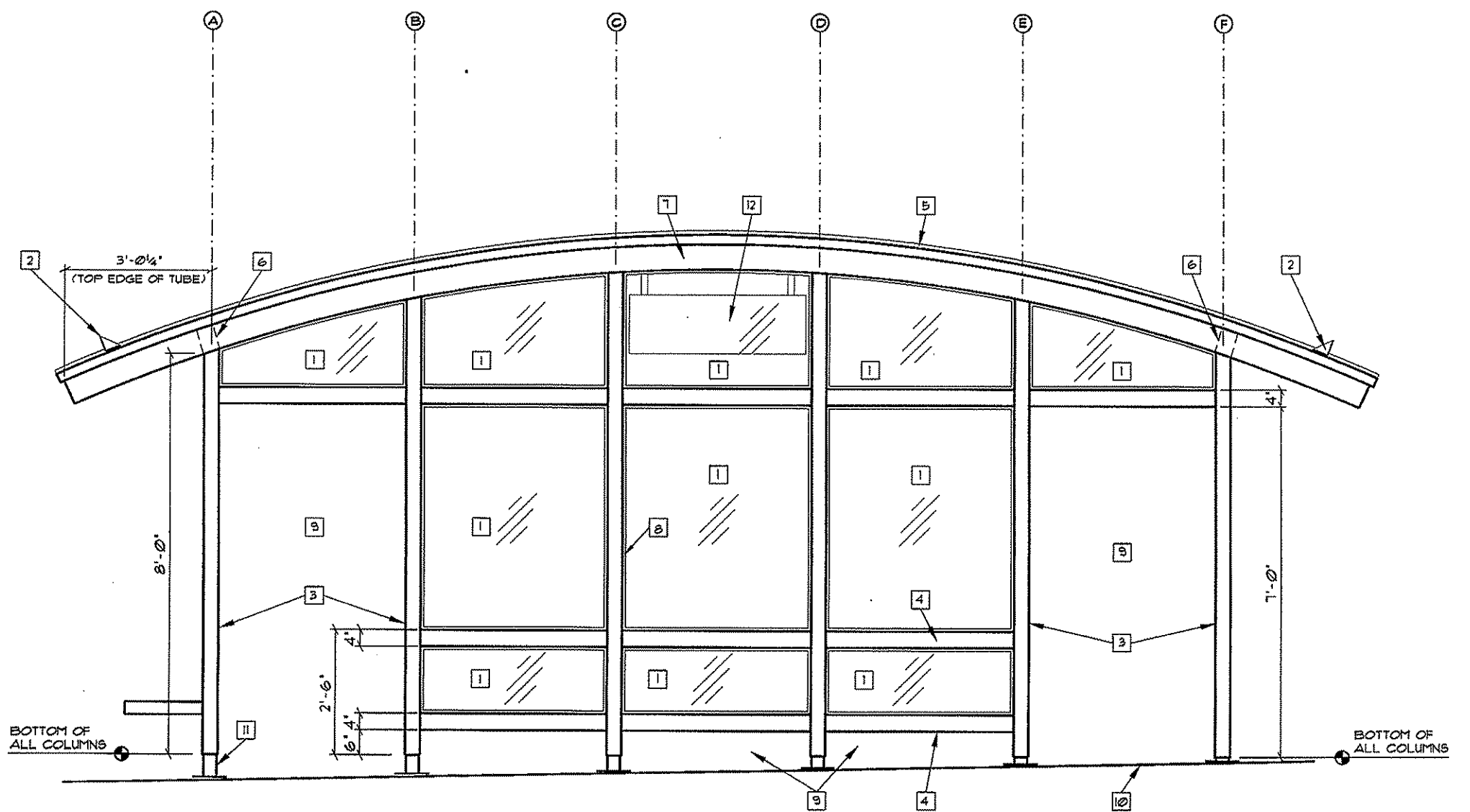
G:/PROJECTS/3127S/313/3130405-BUS SHELTER/CADD/

PROJECT NO.	3130405	DATE	APRIL 20, 2006	SCALE	AS SHOWN
DRAWN BY	AL/KJK	CHECKED BY	AJB		
CADD FILE NO.	313040503.DGN	DATE	04/20/06	PLT FILE	
ROOF FRAMING PLAN CITY OF MADISON CAPITOL SQUARE BUS SHELTERS MADISON, WISCONSIN					
FILE NO.	3130405	SHEET			
					A-3



GRID LINE 'A' END ELEVATION

SCALE 3/4" = 1'-0" (22x34)
SCALE 3/8" = 1'-0" (11x17)



SIDEWALK ELEVATION

SCALE 3/4" = 1'-0" (22x34)
SCALE 3/8" = 1'-0" (11x17)

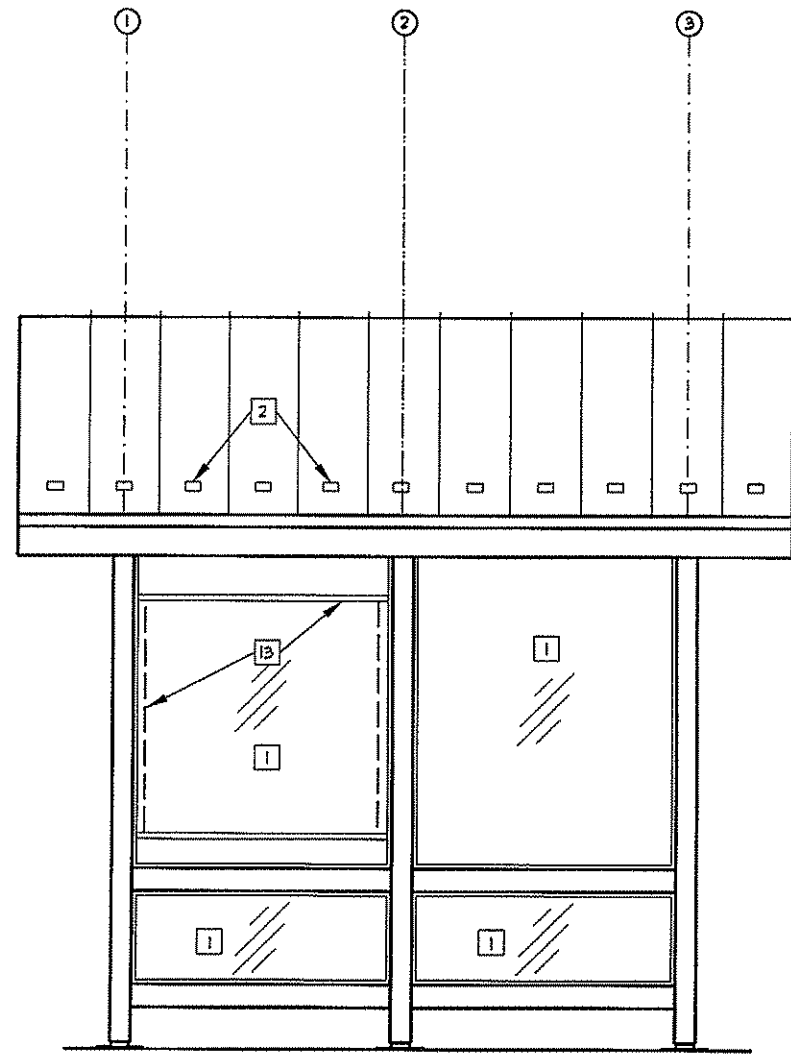
BOX NOTES

- | | |
|------------------------------------------------------------------------|----------------------------|
| 1 GLASS | 7 CURVED ROOF MEMBER |
| 2 SNOW AND ICE GUARDS | 8 GLASS STOPS |
| 3 RIVNUTS IN COLUMN FOR EYELETS AND PLASTIC CHAIN TO BE ADDED BY OWNER | 9 OPEN |
| 4 TYPICAL HORIZONTAL WALL MEMBER | 10 SIDEWALK - SLOPE VARIES |
| 5 ARCHITECTURAL STANDING SEAM ROOF | 11 BASE SHOE |
| 6 ROOF CROSS BEAM BETWEEN CURVED ROOF MEMBERS | 12 DIGITAL SIGN BEYOND |

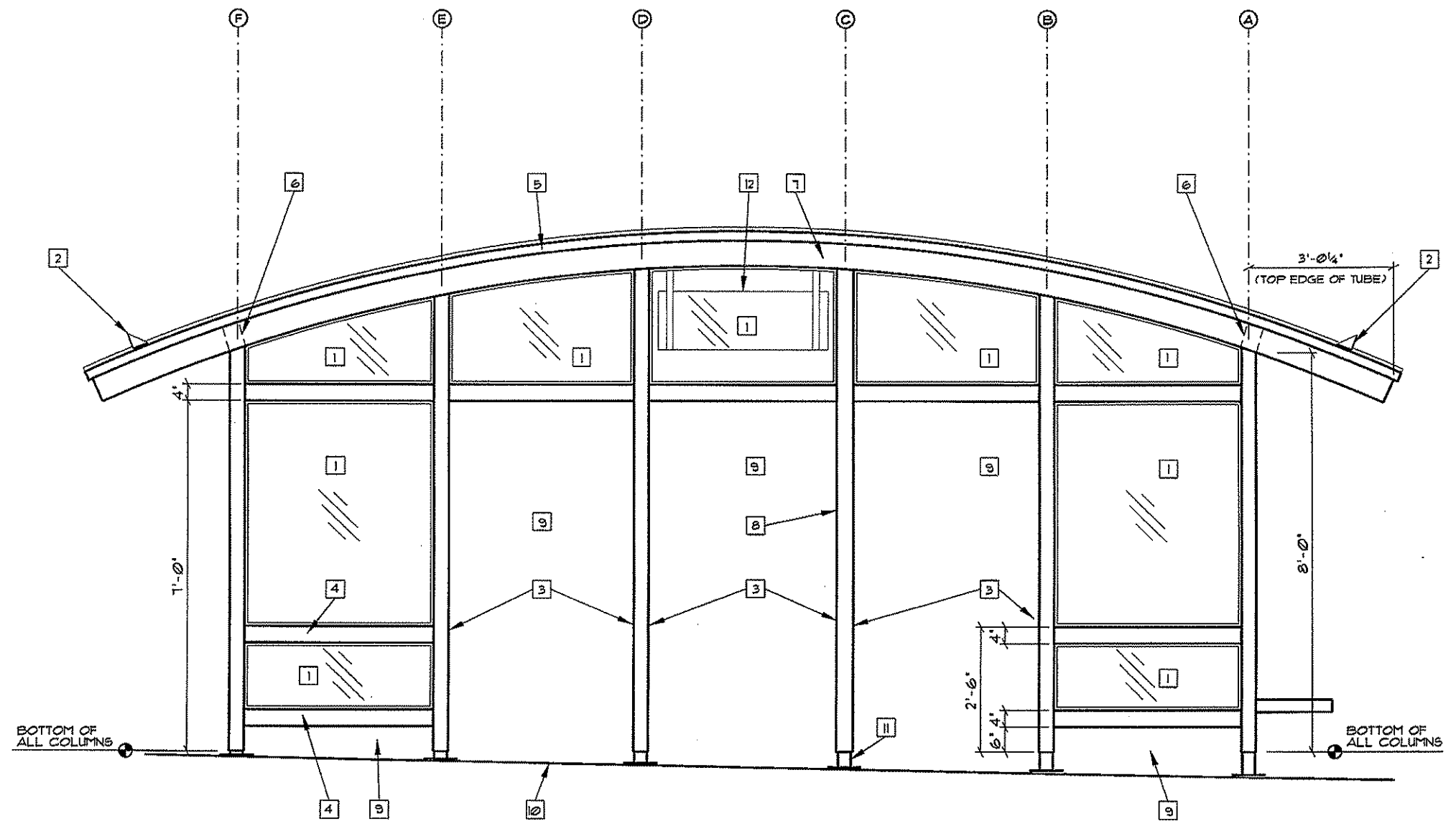
**- PRELIMINARY -
NOT FOR CONSTRUCTION**

G:\PROJECTS\310'S\313\3130405-BUS SHELTER\CADD\

DATE	REVISION	BY
PROJECT NO: 3130405	DATE: APRIL 20, 2006	SCALE: AS SHOWN
DRAWN BY: AL/RKC	CHECKED BY: AJS	
CADD FILE NO: 313040501.DGN	PLOT DATE: 04/20/06	PLOT TIME:



GRID LINE 'F' END ELEVATION
 SCALE 3/4" = 1'-0" (22x34)
 SCALE 3/8" = 1'-0" (11x17)



STREET ELEVATION
 SCALE 3/4" = 1'-0" (22x34)
 SCALE 3/8" = 1'-0" (11x17)

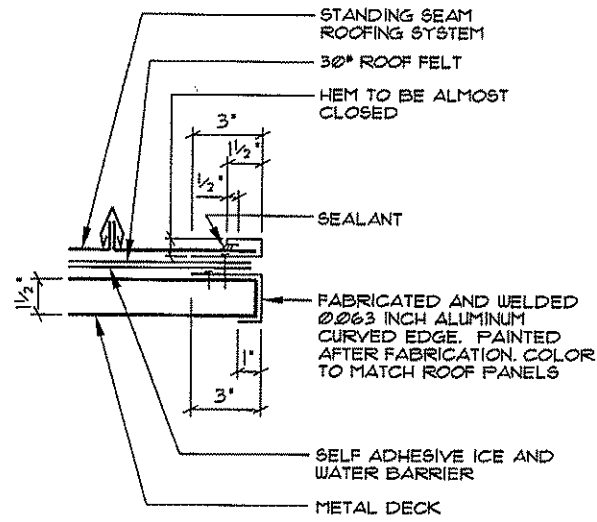
BOX NOTES

- 1 GLASS
- 2 SNOW AND ICE GUARDS
- 3 RIVNUTS IN COLUMN FOR EYELETS AND PLASTIC CHAIN TO BE ADDED BY OWNER
- 4 TYPICAL HORIZONTAL WALL MEMBER
- 5 ARCHITECTURAL STANDING SEAM ROOF
- 6 ROOF CROSS BEAM BETWEEN CURVED ROOF MEMBERS
- 7 CURVED ROOF MEMBER
- 8 GLASS STOPS
- 9 OPEN
- 10 SIDEWALK - SLOPE VARIES
- 11 BASE SHOE
- 12 DIGITAL SIGN
- 13 MADISON METRO IDENTITY AND MAP WITH FRAME

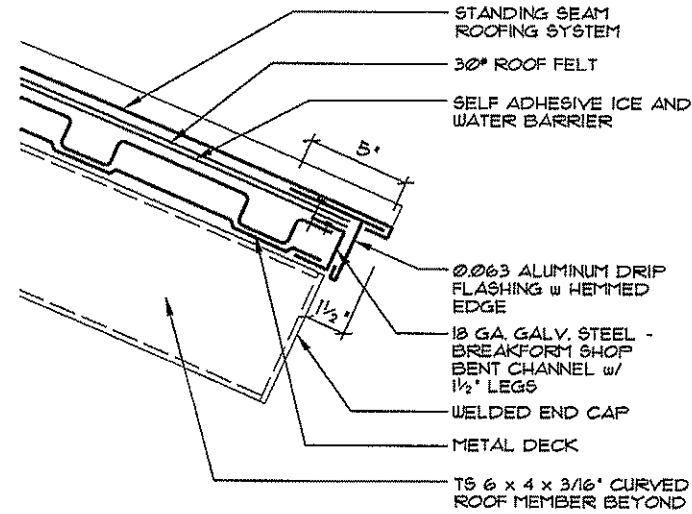
**- PRELIMINARY -
 NOT FOR CONSTRUCTION**

G:\PROJECTS\3170\6\313\3130405-BUS SHELTER\CADD\

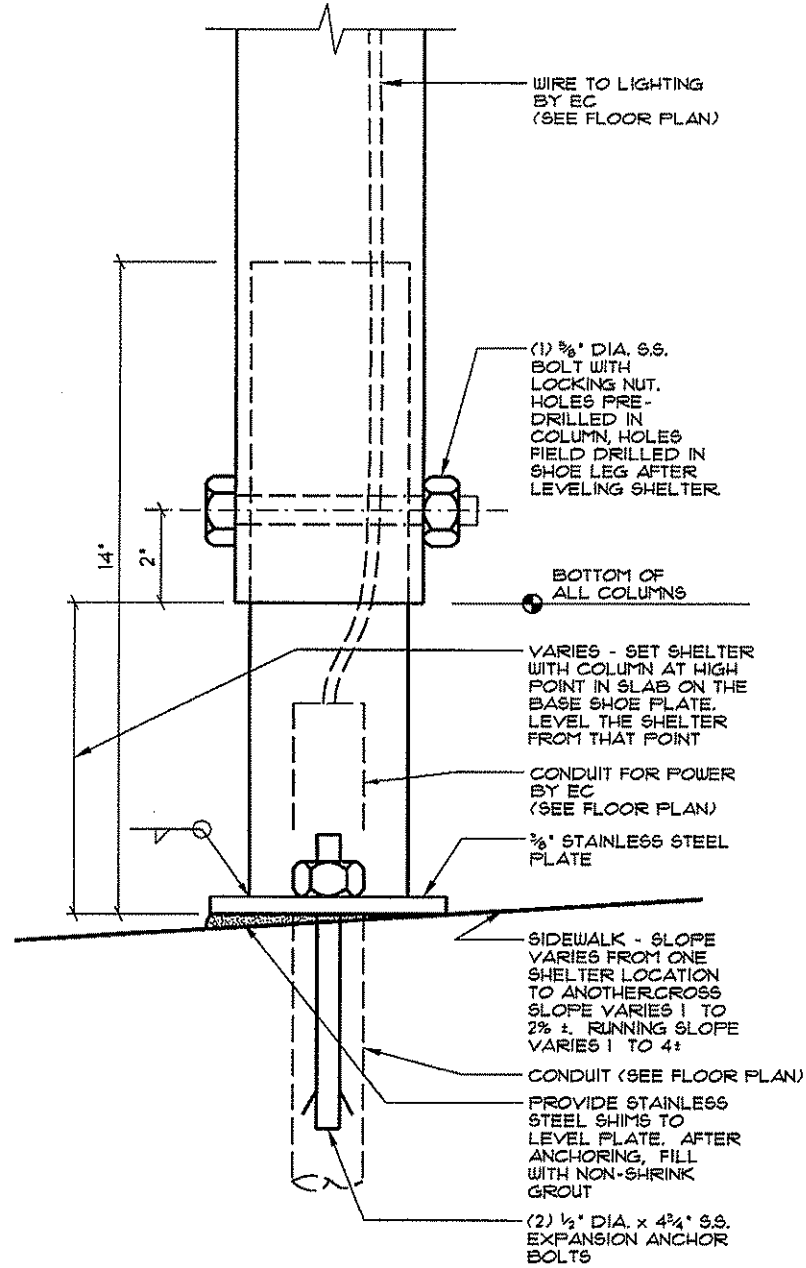
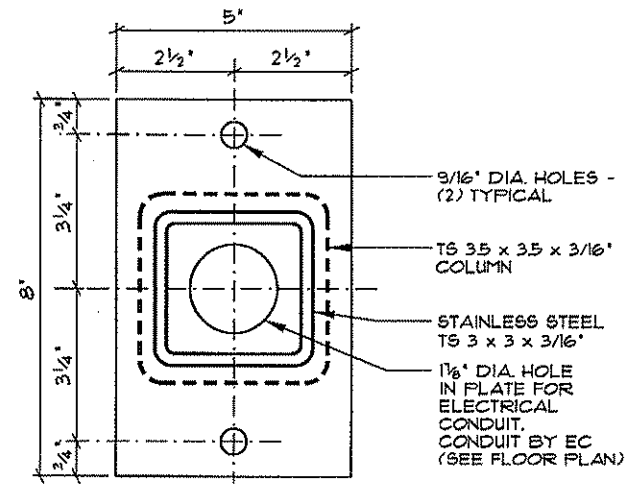
PROJECT NO.	3130405
DATE	APRIL 20, 2006
SCALE	A9 SHOWN
DRAWN BY	AL/RMK
DESIGNED BY	AJS
FILE NO.	3130405-05.DGN
PLT DATE	04/20/06
PLT TIME	



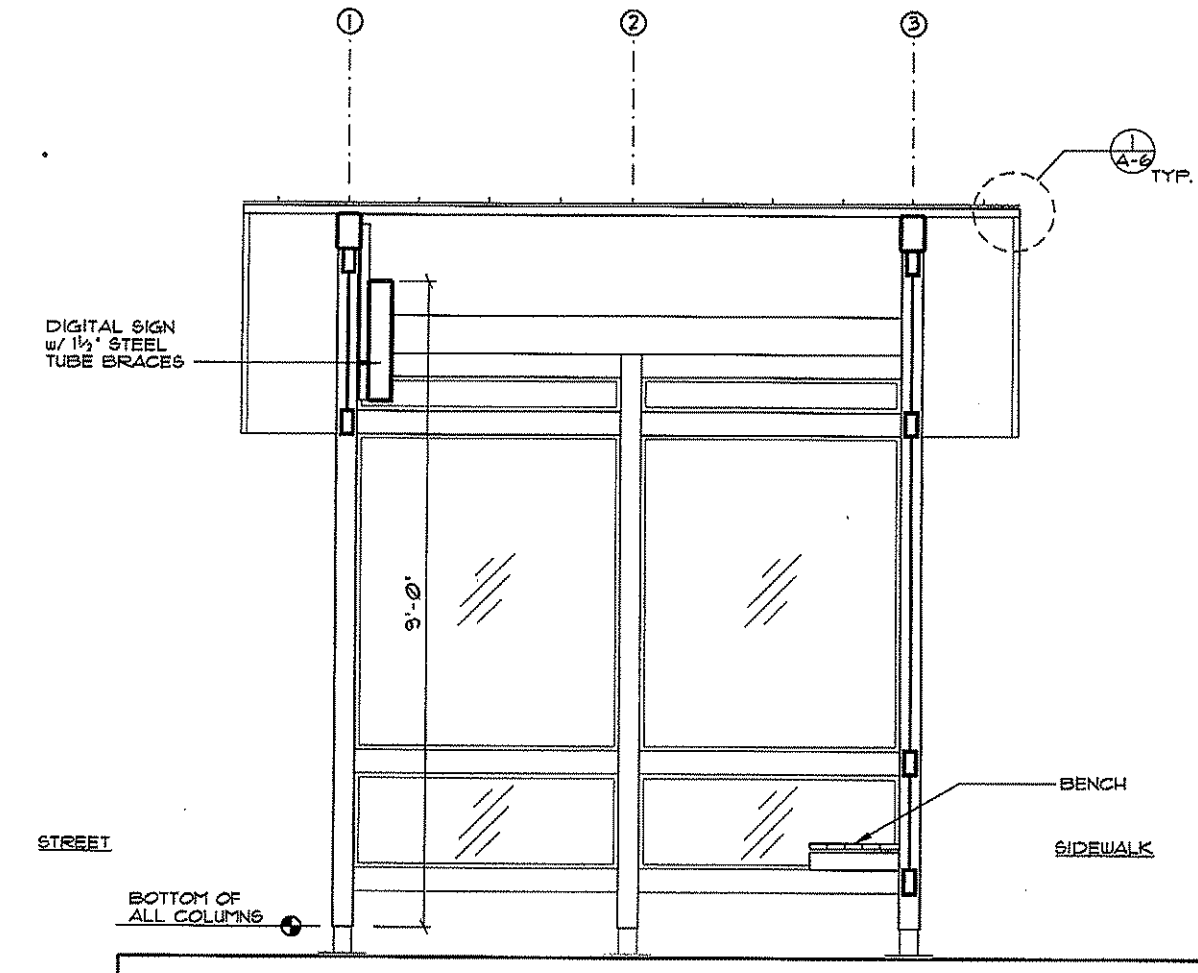
1 ROOF EDGE DETAIL
 A-6 3' = 1'-0" (22X34)
 1 1/2" = 1'-0" (11X17)



2 ROOF EDGE DETAIL
 A-6 3' = 1'-0" (22X34)
 1 1/2" = 1'-0" (11X17)



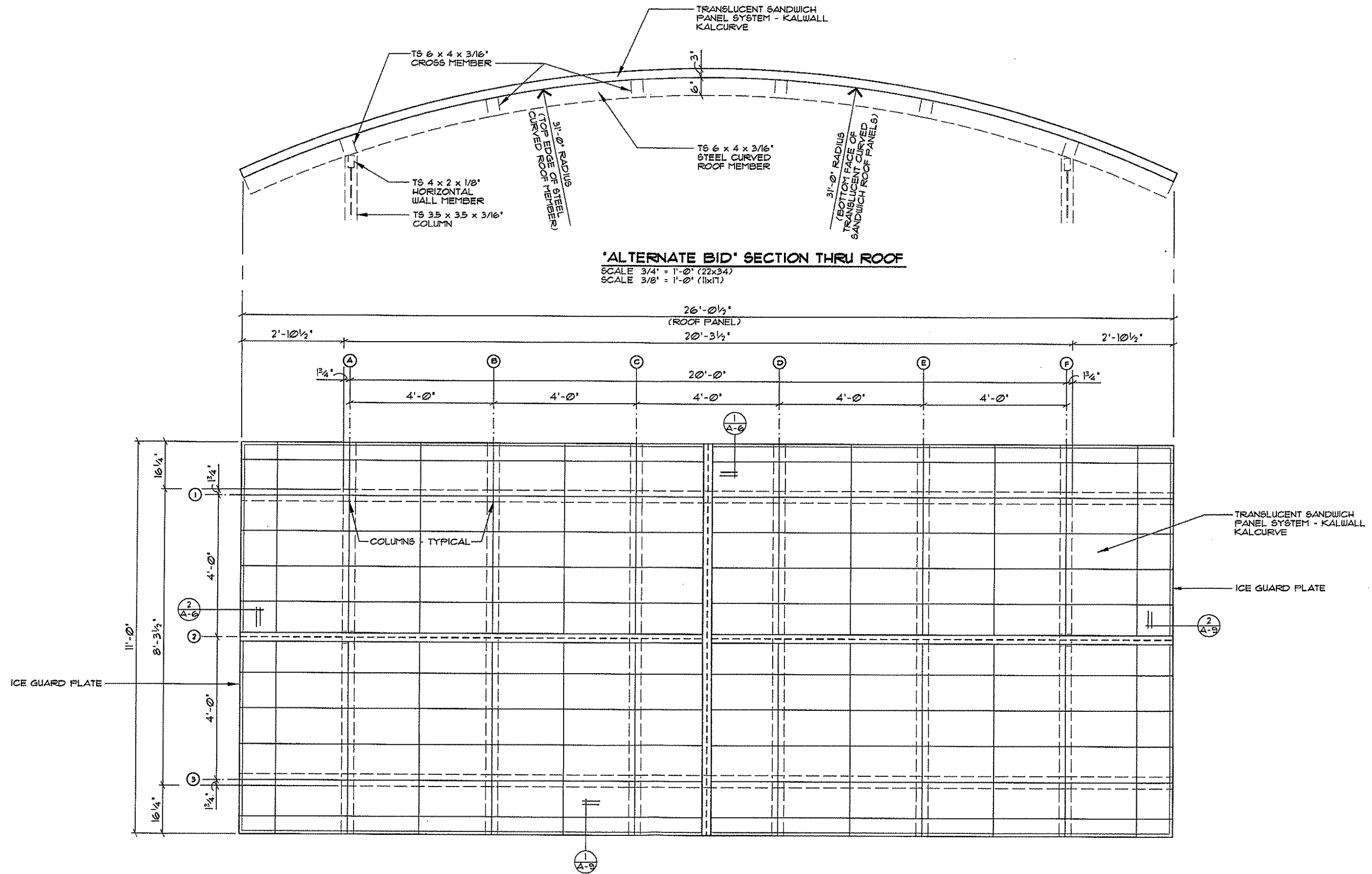
4 TYPICAL BASE SHOE DETAIL
 A-6 6' = 1'-0" (22X34)
 3' = 1'-0" (11X17)



3 TYPICAL CROSS-SECTION
 A-6 SCALE 3/4" = 1'-0" (22X34)
 SCALE 3/8" = 1'-0" (11X17)

- PRELIMINARY -
 NOT FOR CONSTRUCTION

TRANSPORTATION • MUNICIPAL DEVELOPMENT • ENVIRONMENTAL		1210 South Boulevard, Brookfield, WI 53005		608-336-2771, 1-800-362-4905 Fax: 608-336-2770	
MSA		PROFESSIONAL SERVICES		© U.S. PROFESSIONAL SERVICES	
BY	REVISION	DATE	NO.	PROJECT NO.	DATE
				3130405	APRIL 20, 2006
				SCALE:	AS SHOWN
DESIGNED BY:	AL/KNC	CHECKED BY:	AJS		
FILE NO.	3130405	DATE	04/20/06		
PROJECT	CROSS-SECTION AND DETAILS				
	CITY OF MADISON				
	CAPITOL SQUARE BUS SHELTERS				
	MADISON, WISCONSIN				
FILE NO.	3130405				
SHEET	A-6				



NO.	DATE	REVISION

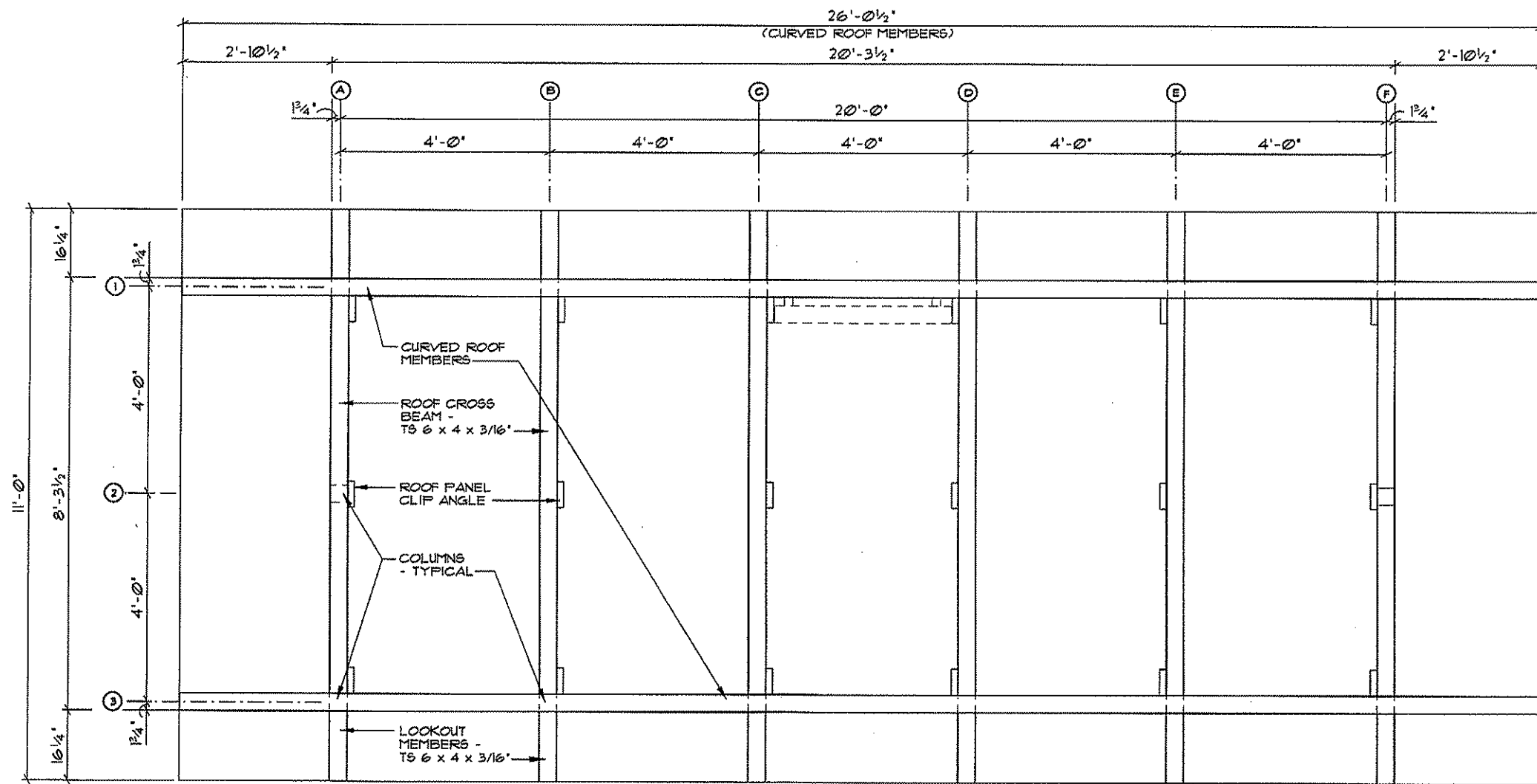
PROJECT NO.	DATE	SCALE
3130405	APRIL 20, 2006	AS SHOWN

DESIGNER	CHECKED BY
AL/KMK	AJS

CAD FILE NO.	PLOT DATE	PLOT TIME
313040501.DGN	04/20/06	

'ALTERNATE BID' ROOF PLAN
 CITY OF MADISON
 CAPITOL SQUARE BUS SHELTERS
 MADISON, WISCONSIN

**- PRELIMINARY -
 NOT FOR CONSTRUCTION**



'ALTERNATE BID' ROOF FRAMING PLAN
 SCALE 3/4" = 1'-0" (22x34)
 SCALE 3/8" = 1'-0" (11x17)

**- PRELIMINARY -
 NOT FOR CONSTRUCTION**

G:\PROJECTS\2105\213\3130405 - BUS SHELTER\CADD\

**TRANSPORTATION • MUNICIPAL
 DEVELOPMENT • ENVIRONMENTAL**
 1230 South Boulevard, Madison, WI 53713
 608-356-2771, 1-800-362-4101 Fax: 608-356-2770
 © MSA PROFESSIONAL SERVICES

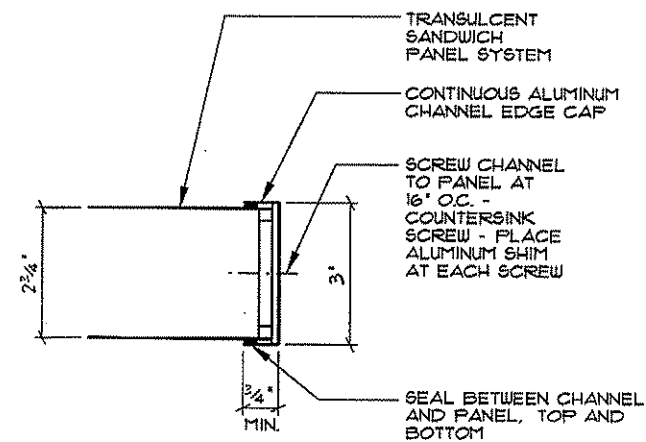
MSA

PROFESSIONAL SERVICES

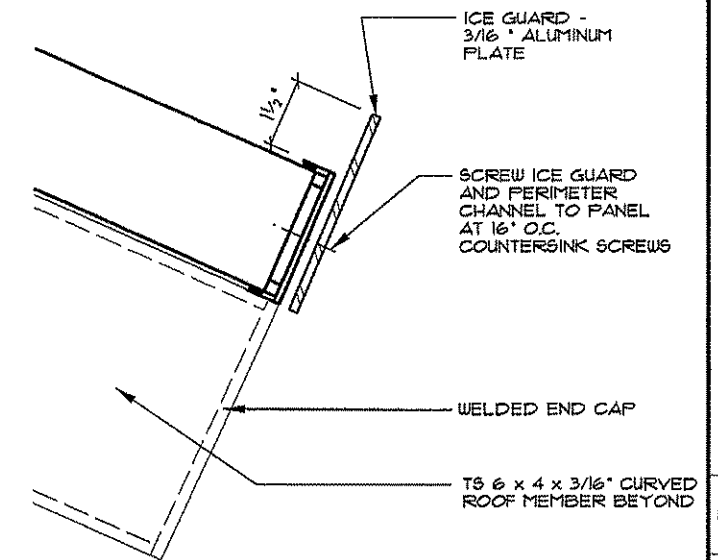
NO.	DATE	BY	REVISION	PROJECT NO.	DATE	SCALE
3130405	APRIL 20, 2006	AL/IKK		3130405	APRIL 20, 2006	AS SHOWN
DDD FILE NO: 3130405/2006.DGN PLOT DATE: 04/20/06 PLOT TIME:			DRAWN BY: AL/IKK CHECKED BY: ALJ			

'ALTERNATE BID' ROOF FRAMING PLAN
 CITY OF MADISON
 CAPITOL SQUARE BUS SHELTERS
 MADISON, WISCONSIN

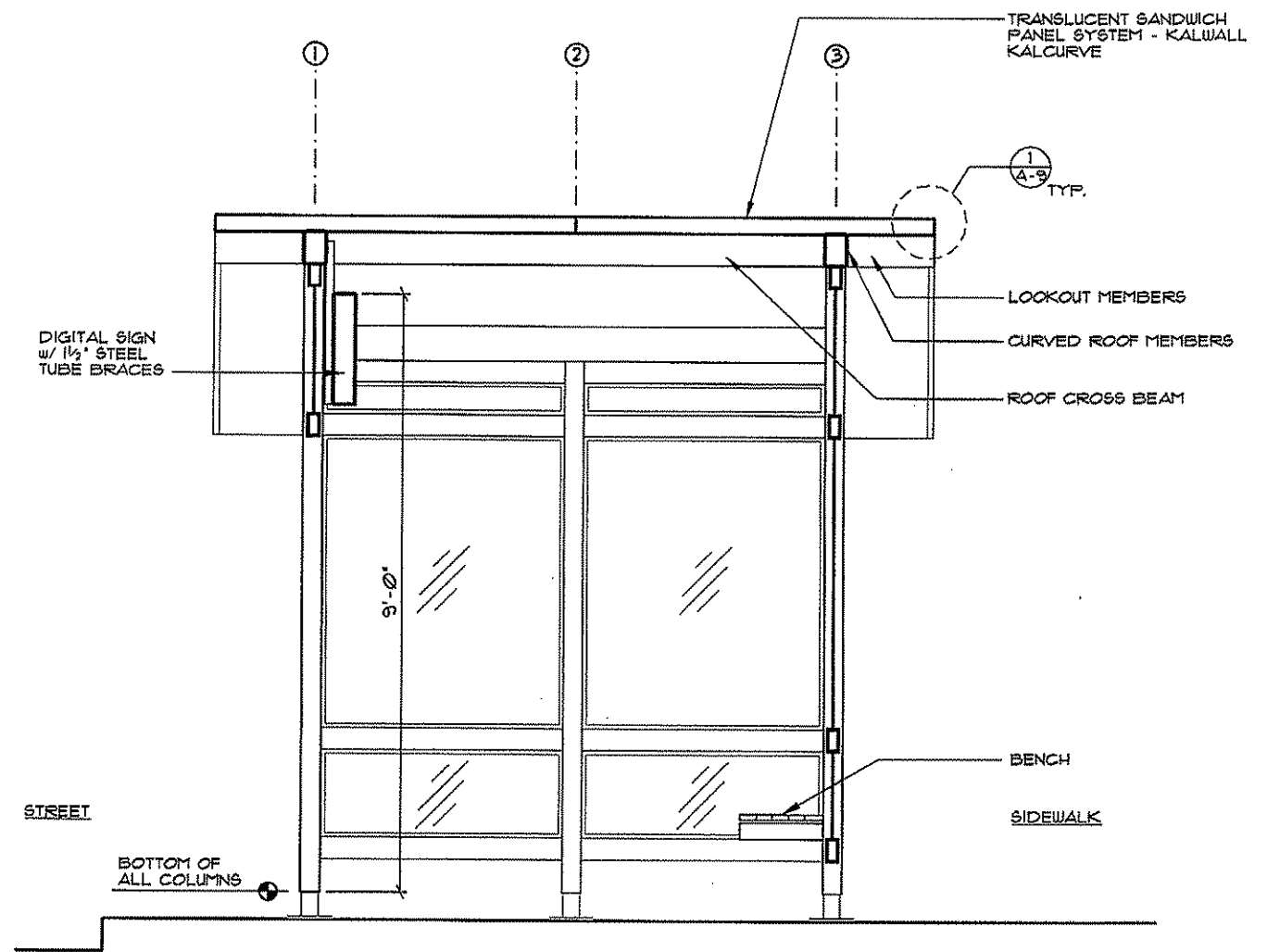
FILE NO:
 3130405
 SHEET
A-8



1 ALT. BID - ROOF EDGE DETAIL
 A-9 SCALE 3/4" = 1'-0" (22x34)
 SCALE 3/8" = 1'-0" (11x17)



2 ALT. BID - ROOF EDGE DETAIL
 A-9 SCALE 3/4" = 1'-0" (22x34)
 SCALE 3/8" = 1'-0" (11x17)



3 ALT. BID - TYPICAL CROSS-SECTION
 A-9 SCALE 3/4" = 1'-0" (22x34)
 SCALE 3/8" = 1'-0" (11x17)

**- PRELIMINARY -
 NOT FOR CONSTRUCTION**

G:\PROJECTS\3106\313\3130405-BUS SHELTER\CADD\

TRANSPORTATION - MUNICIPAL DEVELOPMENT - ENVIRONMENTAL 1238 South Boulevard, Danbury, WI 53113 608-335-2771 1-800-552-4585 Fax: 608-335-2770 © MSA PROFESSIONAL SERVICES	
MSA	PROFESSIONAL SERVICES
PROJECT NO. 3130405	DATE APRIL 20, 2006
DRAWN BY: AL/TKK	CHECKED BY: AJS
CAD FILE NO. 313040503DGN	PLOT DATE 04/20/06
PLOT NO. 04/20/06	PLOT INCH
"ALTERNATE BID" CROSS-SECTION AND DETAILS CITY OF MADISON CAPITOL SQUARE BUS SHELTERS MADISON, WISCONSIN	
FILE NO. 3130405	DRAWN BY: A-9