

Time: 9/24/2019 1:38:44 PM

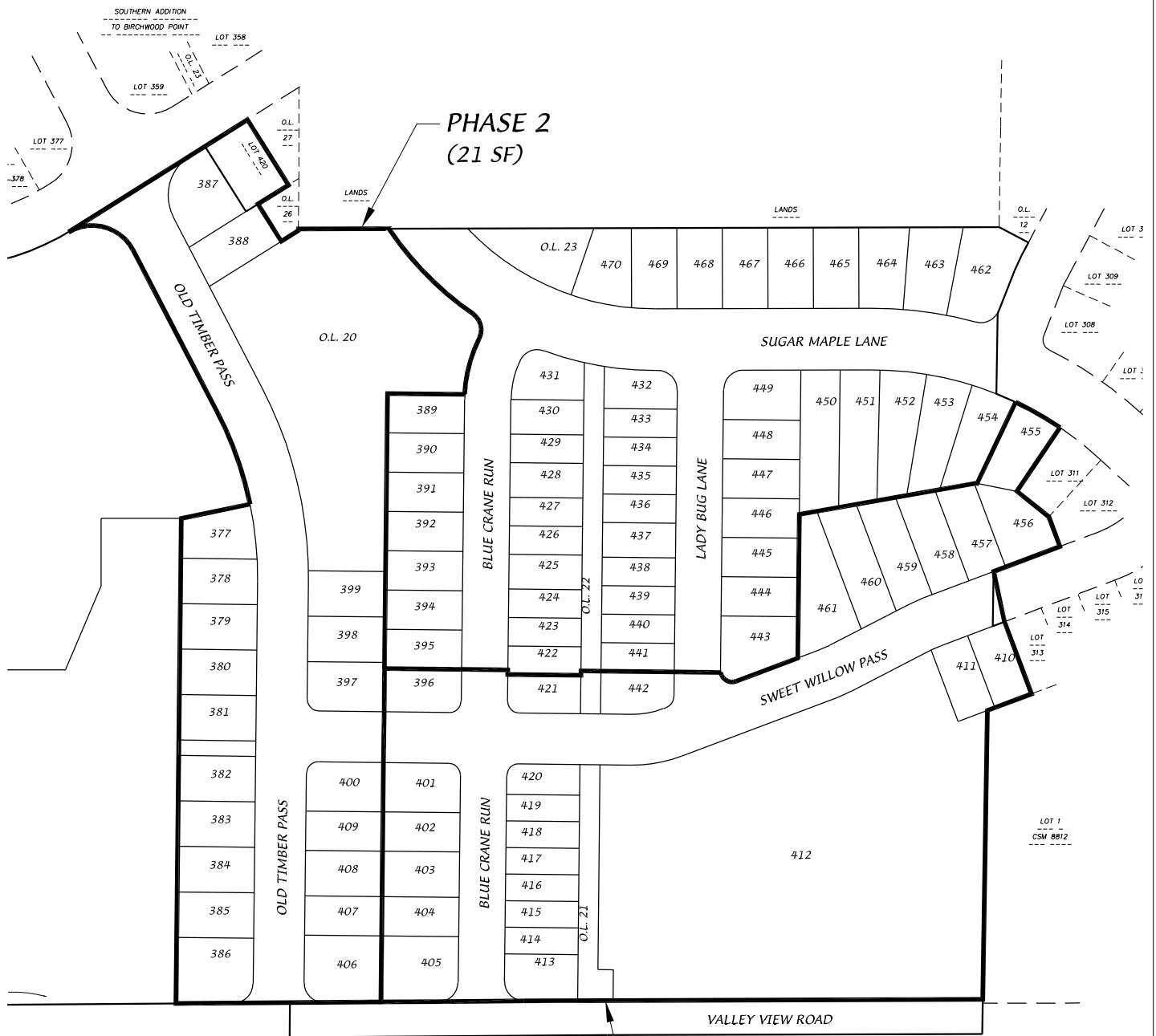
Session: C:\GTViewer_Sessions\Deming & Fourier SW.gts

City of Madison, WI - GIS/Mapping data

Printed By: entnt

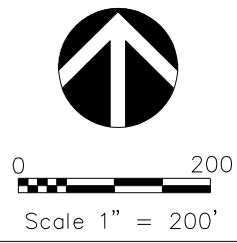
Disclaimer: The City makes no representation about the accuracy of these records and shall not be liable for any damages

Western Addition to 1000 Oaks



PHASE 1
(17 SF, 8 TWINS & 1 MF)

D'ONOFRIO KOTTKE AND ASSOCIATES, INC.
 7530 Westward Way, Madison, WI 53717
 Phone: 608.833.7530 • Fax: 608.833.1089
 YOUR NATURAL RESOURCE FOR LAND DEVELOPMENT



DATE: 08-19-20
 F.N.: 19-05-123
 REV.

DRAWN BY: JMS
 U: /USER/1807115/DRAWINGS/PHASE MAP.DWG



12629

BPW

M:\DESIGN\Projects\12629\CAD\Streets\12629EN-Street\Network.dwg

CONTRACT NO: 8463

12629

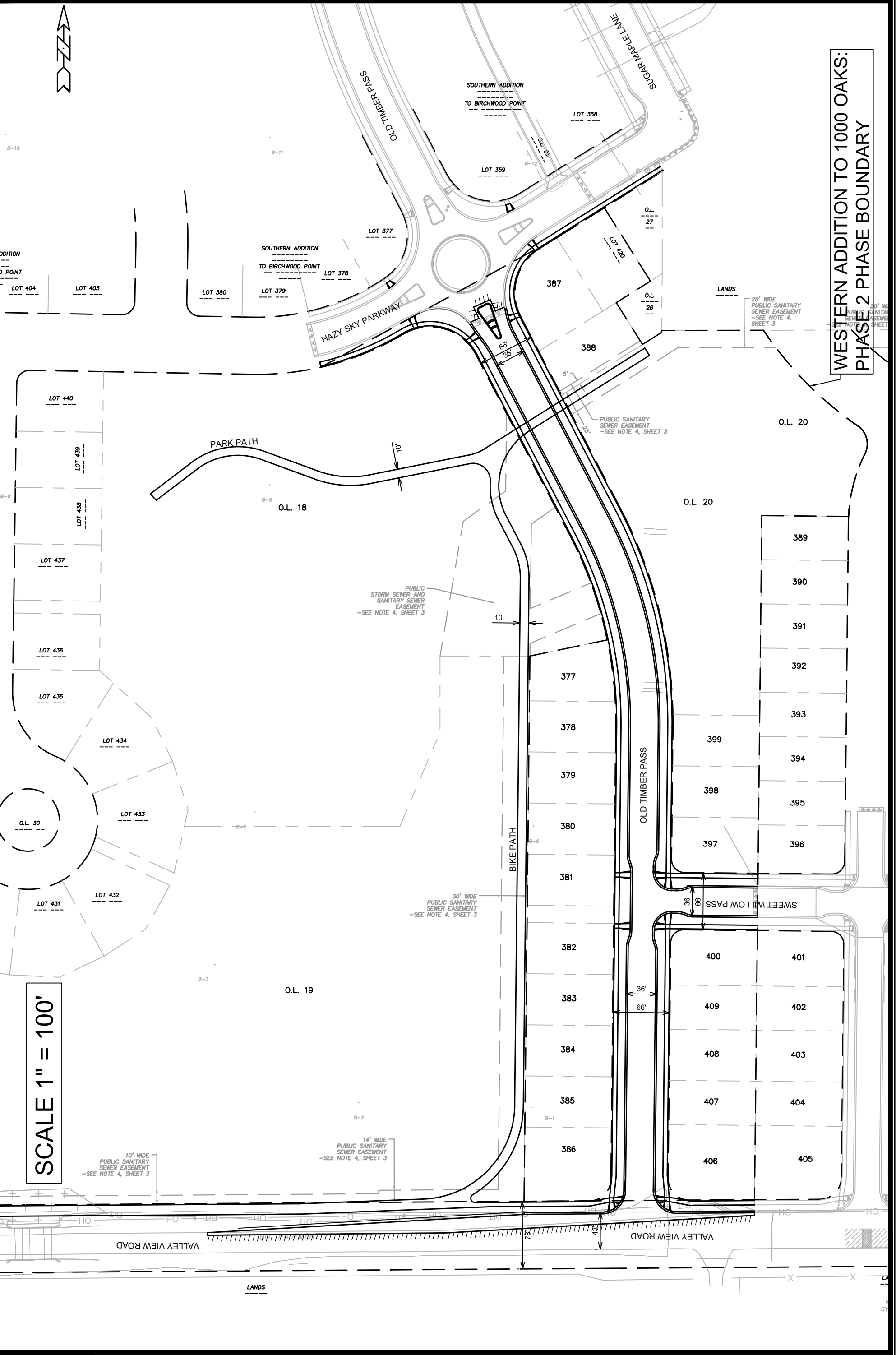
MADISON, WI

WESTERN ADDITION TO 1000 OAKS: PHASE 2

EXHIBIT OVERVIEW

12629

MARK	REVISION	DATE	BY



WESTERN ADDITION TO 1000 OAKS:
PHASE 2 PHASE BOUNDARY

SCALE 1" = 100'