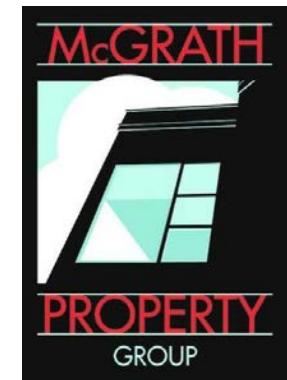


# OLIN AVENUE MIXED-USE DEVELOPMENT

222-232 EAST OLIN AVENUE  
MADISON, WISCONSIN



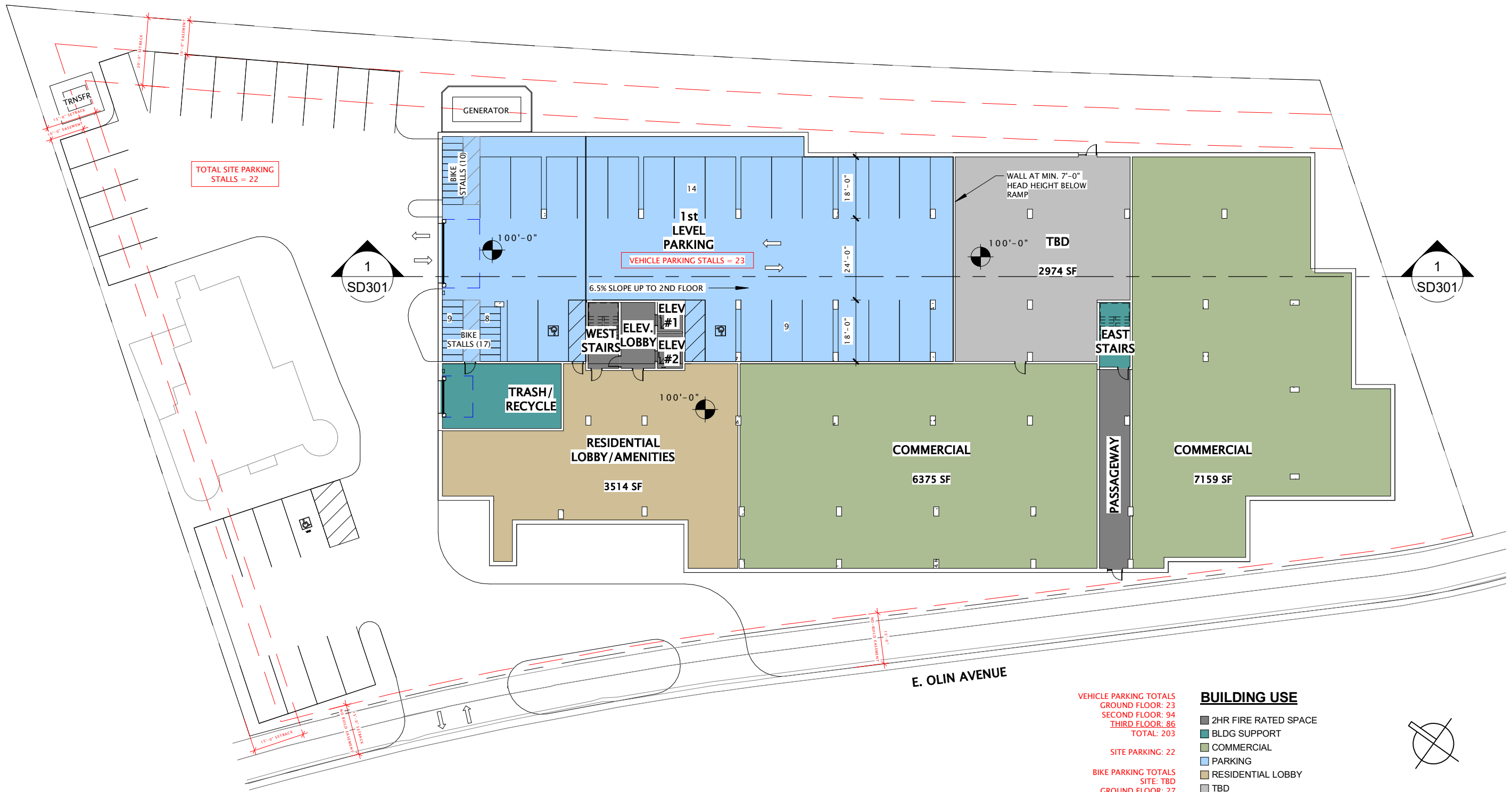
UDC INFORMATIONAL PRESENTATION

MARCH 9, 2022



**JLA**  
ARCHITECTS

JLA PROJECT NUMBER: 20-1014



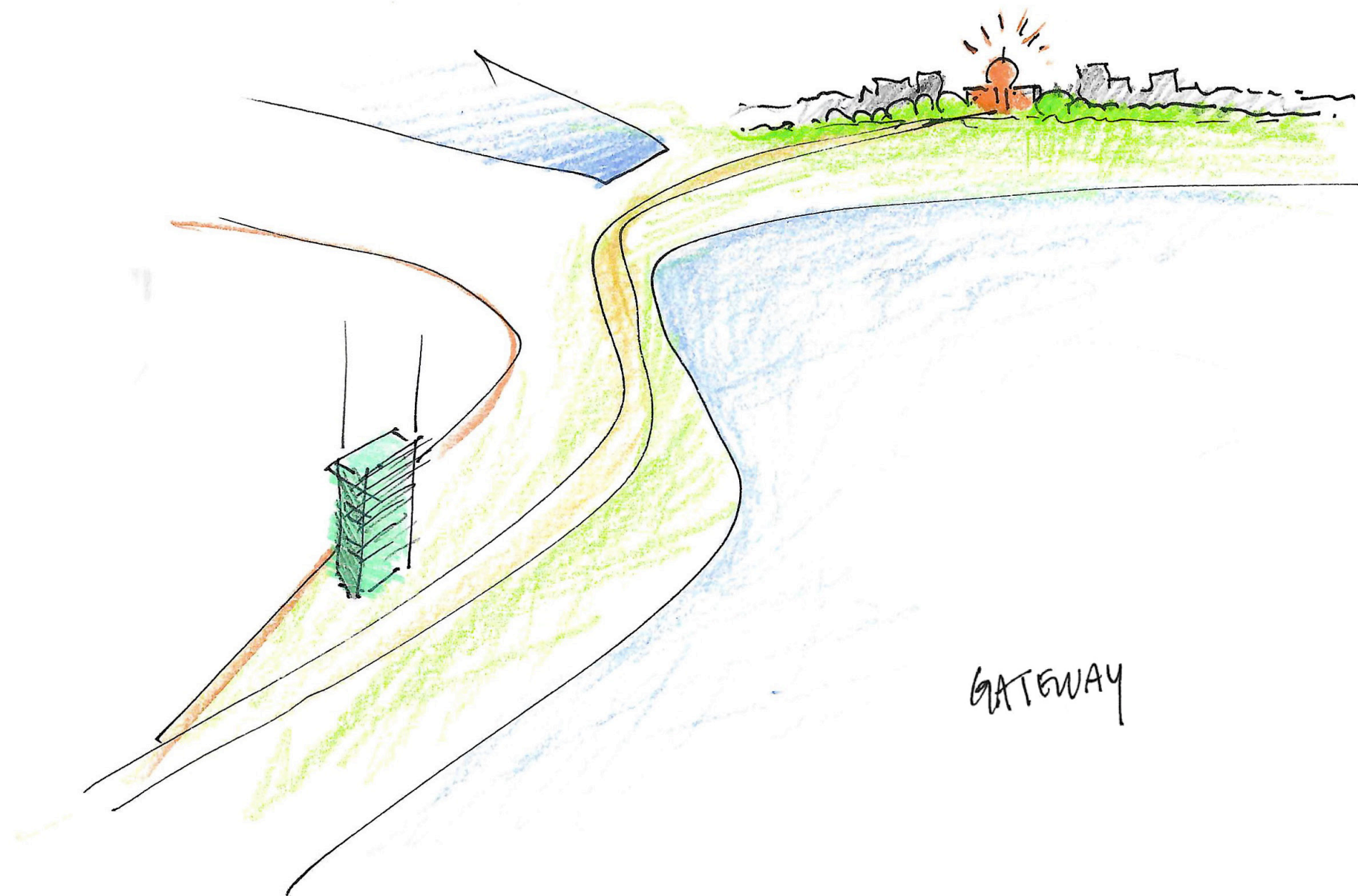
<b>VEHICLE PARKING TOTALS</b>	<b>BUILDING USE</b>
GROUND FLOOR: 23	■ 2HR FIRE RATED SPACE
SECOND FLOOR: 94	■ BLDG SUPPORT
THIRD FLOOR: 86	■ COMMERCIAL
TOTAL: 203	■ PARKING
<b>SITE PARKING: 22</b>	■ RESIDENTIAL LOBBY
<b>BIKE PARKING TOTALS</b>	■ TBD
SITE: TBD	
GROUND FLOOR: 27	
SECOND FLOOR: 45	
THIRD FLOOR: 45	
TOTAL: 117	

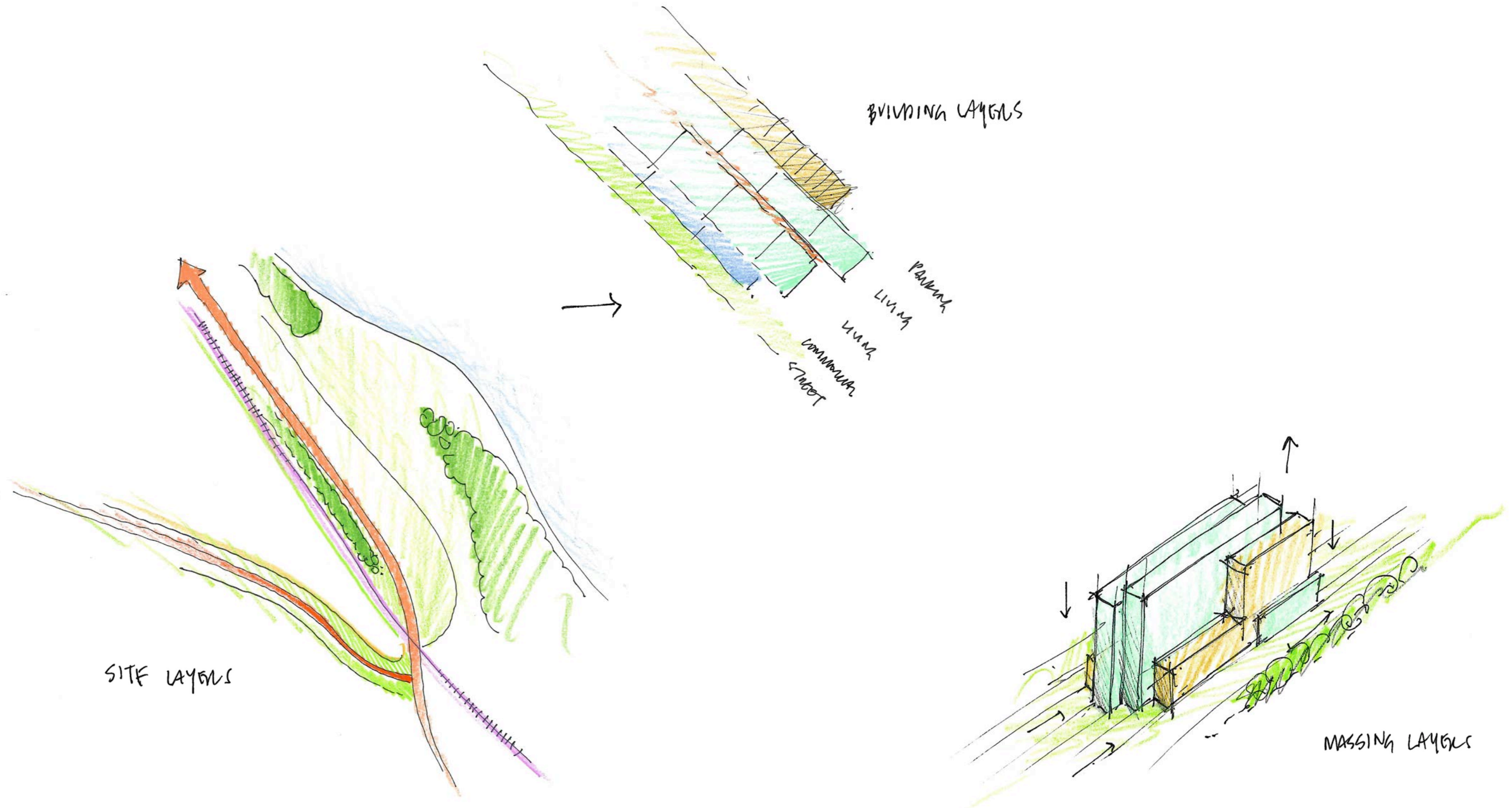
1"=30' @ 11X17



**OLIN AVENUE MIXED-USE DEVELOPMENT**  
ARCHITECTURAL SITE PLAN/FIRST FLOOR PLAN

MARCH 9, 2022





SITE LAYERS

BUILDING LAYERS

MASSING LAYERS



Eastman Lee Architects - Design Architect



OLIN AVENUE MIXED-USE DEVELOPMENT  
VIEW FROM SOUTHEAST

MARCH 9, 2022



Eastman Lee Architects - Design Architect



OLIN AVENUE MIXED-USE DEVELOPMENT  
VIEW FROM NORTHEAST

MARCH 9, 2022



Eastman Lee Architects - Design Architect



OLIN AVENUE MIXED-USE DEVELOPMENT  
VIEW FROM NORTHWEST

MARCH 9, 2022



Eastman Lee Architects - Design Architect



OLIN AVENUE MIXED-USE DEVELOPMENT  
VIEW FROM SOUTHWEST

MARCH 9, 2022



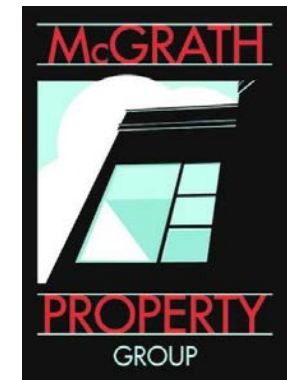






# OLIN AVENUE MIXED-USE DEVELOPMENT

222-232 EAST OLIN AVENUE  
MADISON, WISCONSIN



## UDC INFORMATIONAL SET

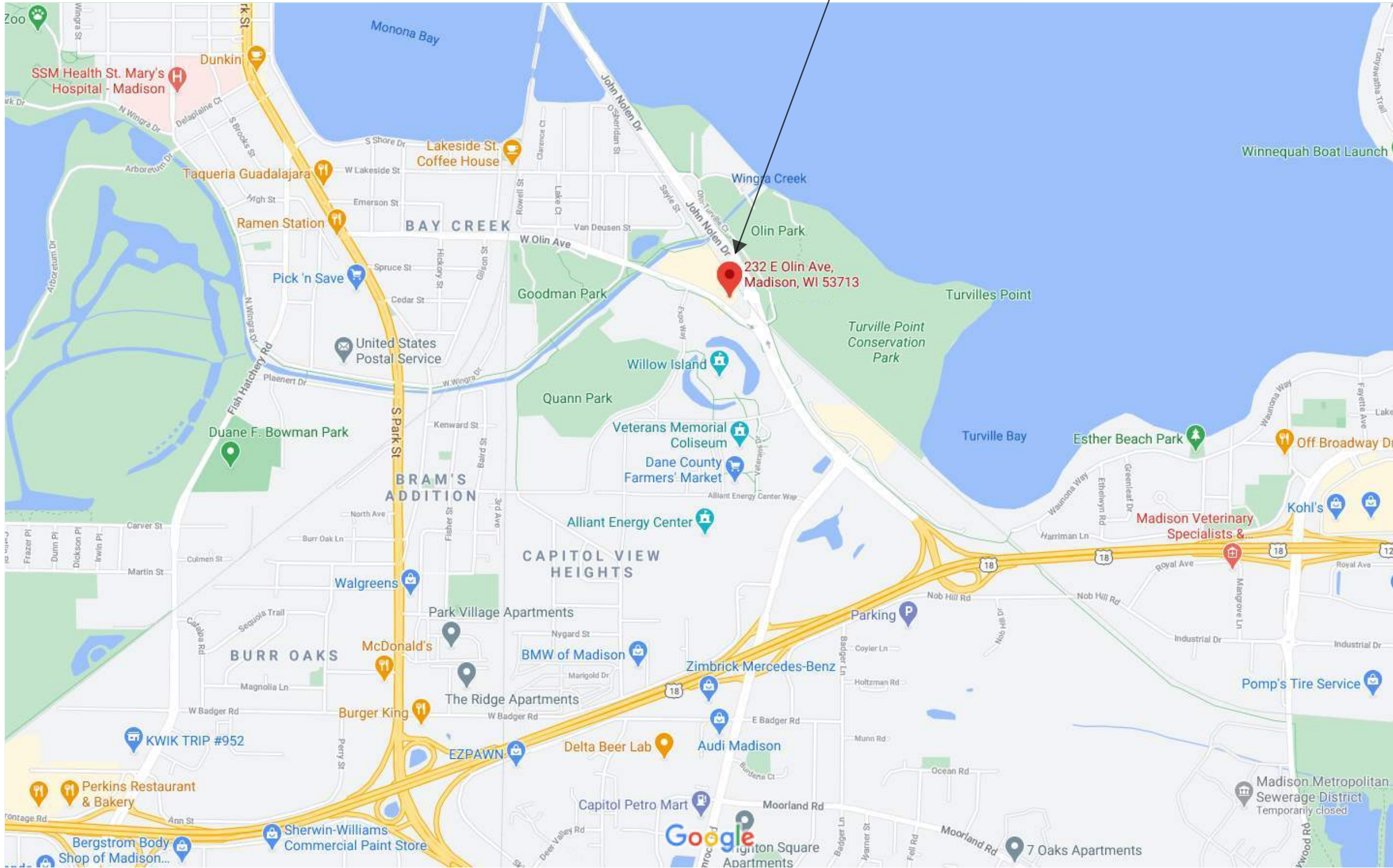
FEBRUARY 21, 2022



**JLA**  
ARCHITECTS

JLA PROJECT NUMBER: 21-1201

222-232 E. OLIN AVENUE  
MADISON, WI 53713

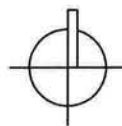


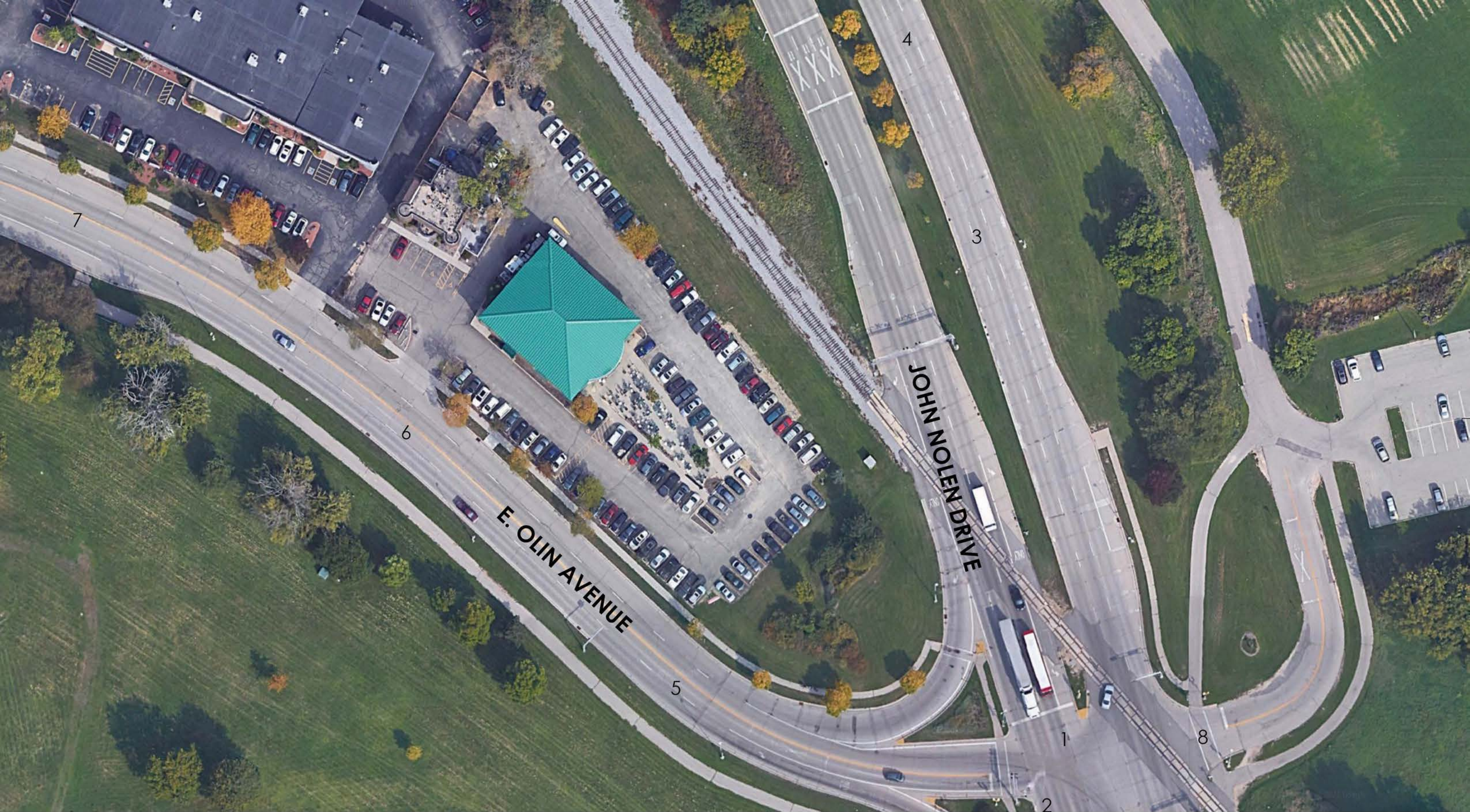
**JLA**  
ARCHITECTS

# OLIN AVENUE MIXED-USE DEVELOPMENT - UDC INFORMATIONAL SET

CONCEPTUAL PLANS - LOCATOR MAP

FEBRUARY 21, 2022





**JLA**  
ARCHITECTS

# OLIN AVENUE MIXED-USE DEVELOPMENT - UDC INFORMATIONAL SET

IMMEDIATE SITE CONTEXT

FEBRUARY 21, 2022

1"=60' @ 11x17





1: JOHN NOLEN DR - FACING NORTHWEST



2: JOHN NOLEN DR - FACING NORTHWEST



3: JOHN NOLEN DR - FACING SOUTHWEST



4: JOHN NOLEN DR - FACING SOUTHWEST



**JLA**  
ARCHITECTS

OLIN AVENUE MIXED-USE DEVELOPMENT - UDC INFORMATIONAL SET

EXISTING SITE PHOTOGRAPHS

FEBRUARY 21, 2022



5: E OLIN AVE - FACING NORTH



6: E OLIN AVE - FACING NORTHEAST



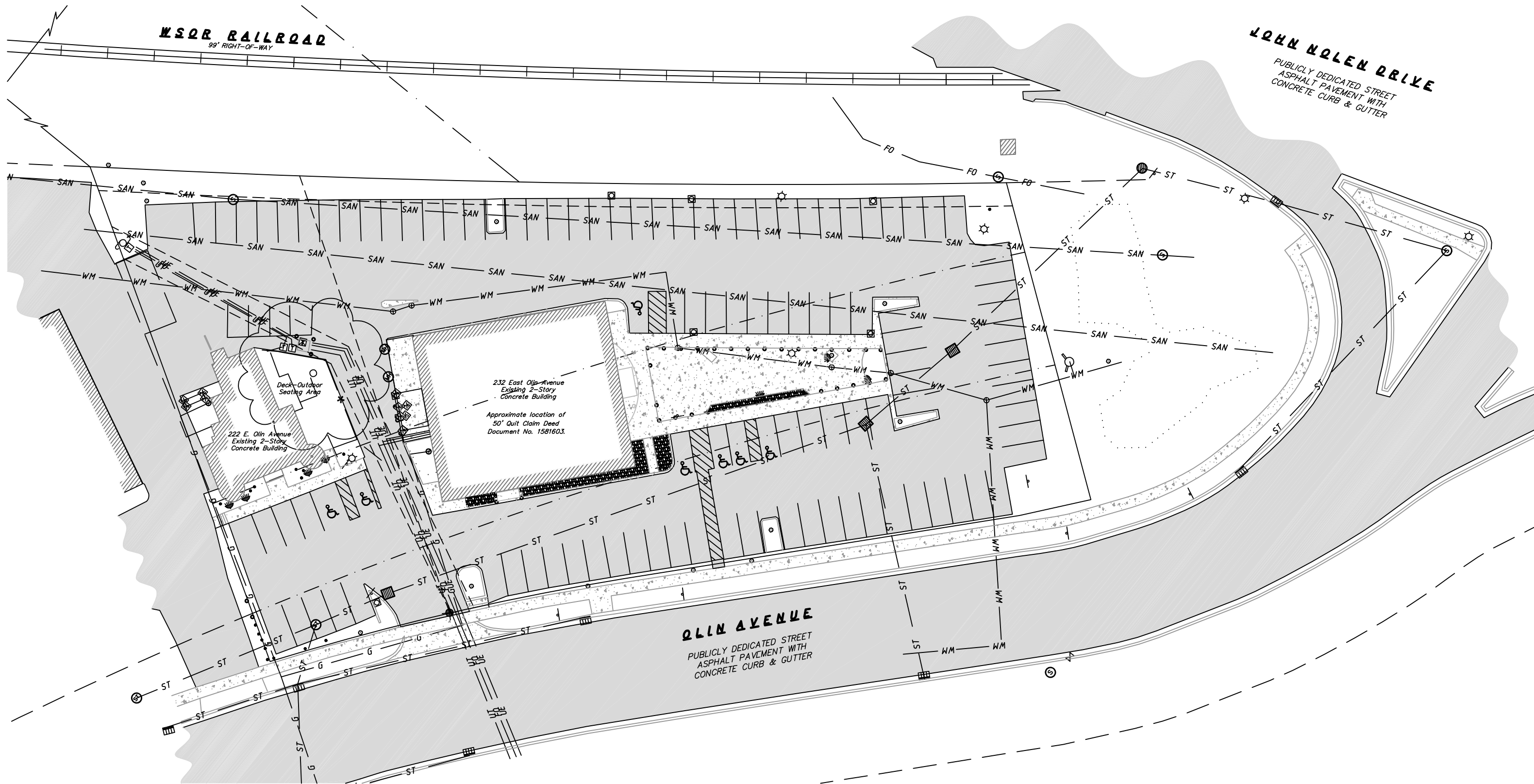
7: E OLIN AVE - FACING EAST

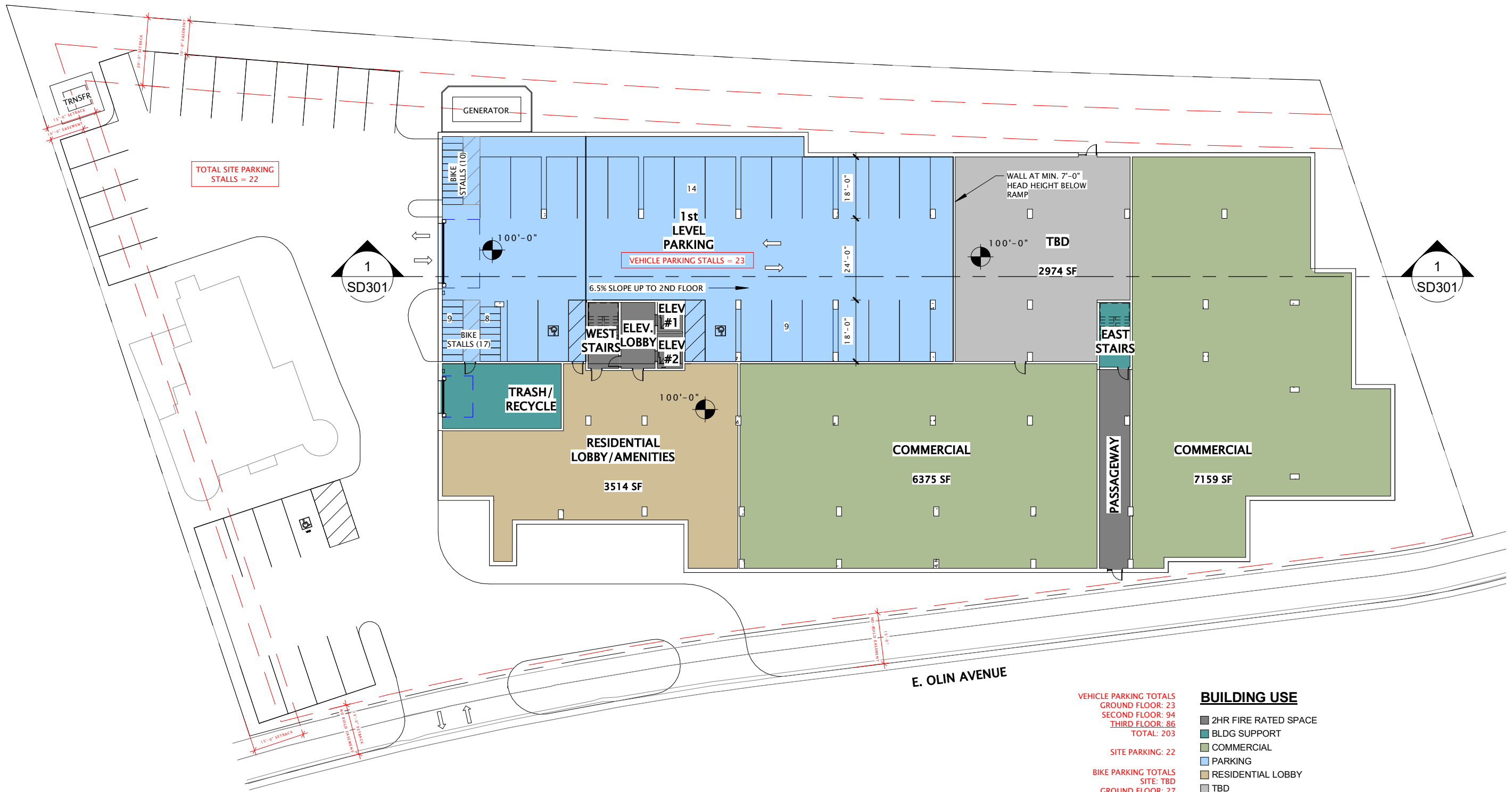


8: OLIN-TURNVILLE CT - FACING WEST









TOTAL SITE PARKING STALLS = 22

VEHICLE PARKING STALLS = 23

VEHICLE PARKING TOTALS  
 GROUND FLOOR: 23  
 SECOND FLOOR: 94  
 THIRD FLOOR: 86  
 TOTAL: 203

SITE PARKING: 22

BIKE PARKING TOTALS  
 SITE: TBD  
 GROUND FLOOR: 27  
 SECOND FLOOR: 45  
 THIRD FLOOR: 45  
 TOTAL: 117

**BUILDING USE**

- 2HR FIRE RATED SPACE
- BLDG SUPPORT
- COMMERCIAL
- PARKING
- RESIDENTIAL LOBBY
- TBD





SOUTHEAST ELEVATION



NORTHWEST ELEVATION



OLIN AVENUE MIXED-USE DEVELOPMENT - UDC INFORMATIONAL SET  
NORTHEAST ELEVATION

FEBRUARY 21, 2022





OLIN AVENUE MIXED-USE DEVELOPMENT - UDC INFORMATIONAL SET  
VIEW FROM SOUTHEAST

FEBRUARY 21, 2022



Designed by:  
Eastman Lee Architects



OLIN AVENUE MIXED-USE DEVELOPMENT - UDC INFORMATIONAL SET  
VIEW FROM NORTHEAST

FEBRUARY 21, 2022



*Designed by:  
Eastman Lee Architects*



OLIN AVENUE MIXED-USE DEVELOPMENT - UDC INFORMATIONAL SET  
VIEW FROM NORTHWEST

FEBRUARY 21, 2022





*Designed by:  
Eastman Lee Architects*



OLIN AVENUE MIXED-USE DEVELOPMENT - UDC INFORMATIONAL SET  
VIEW FROM SOUTHWEST

FEBRUARY 21, 2022