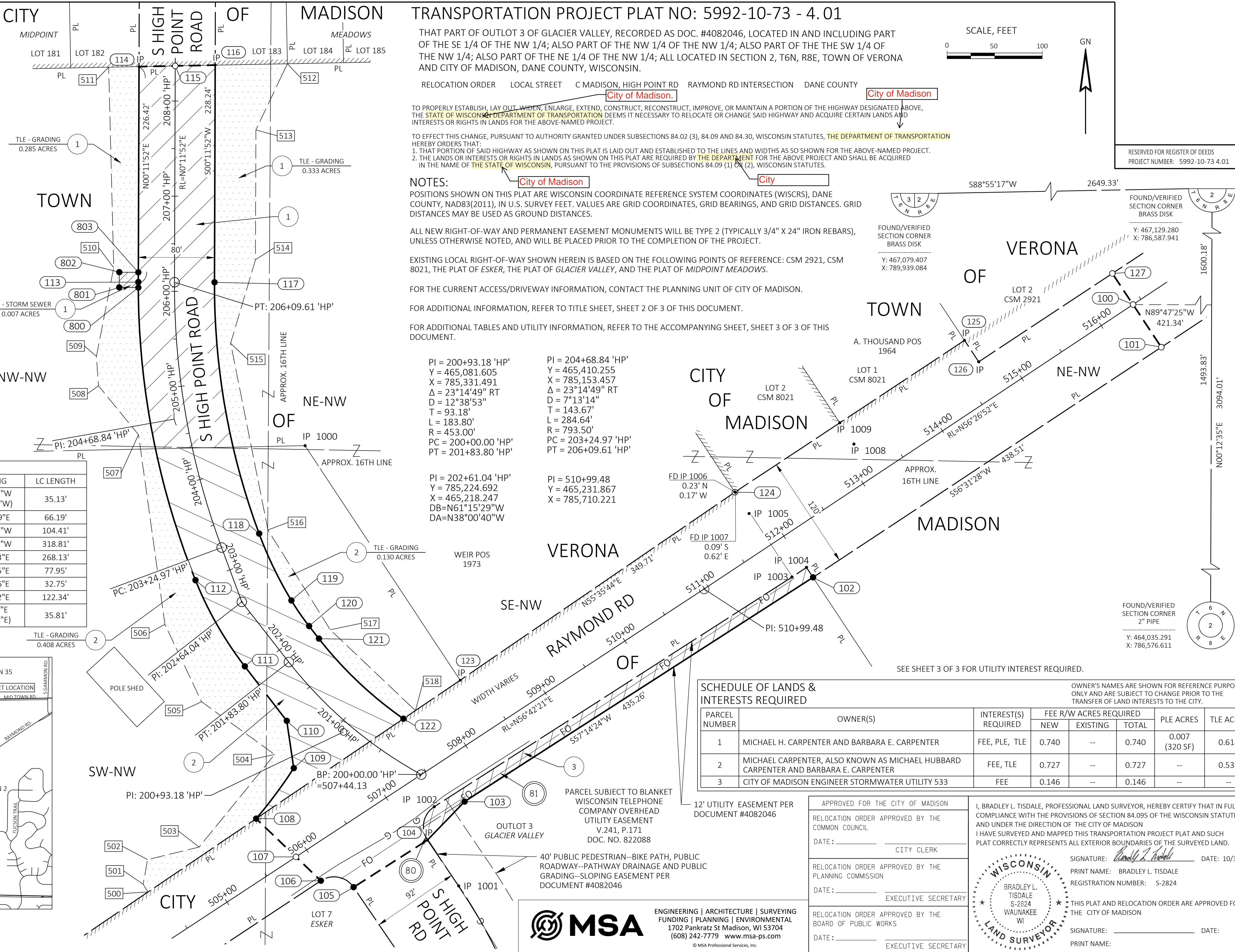
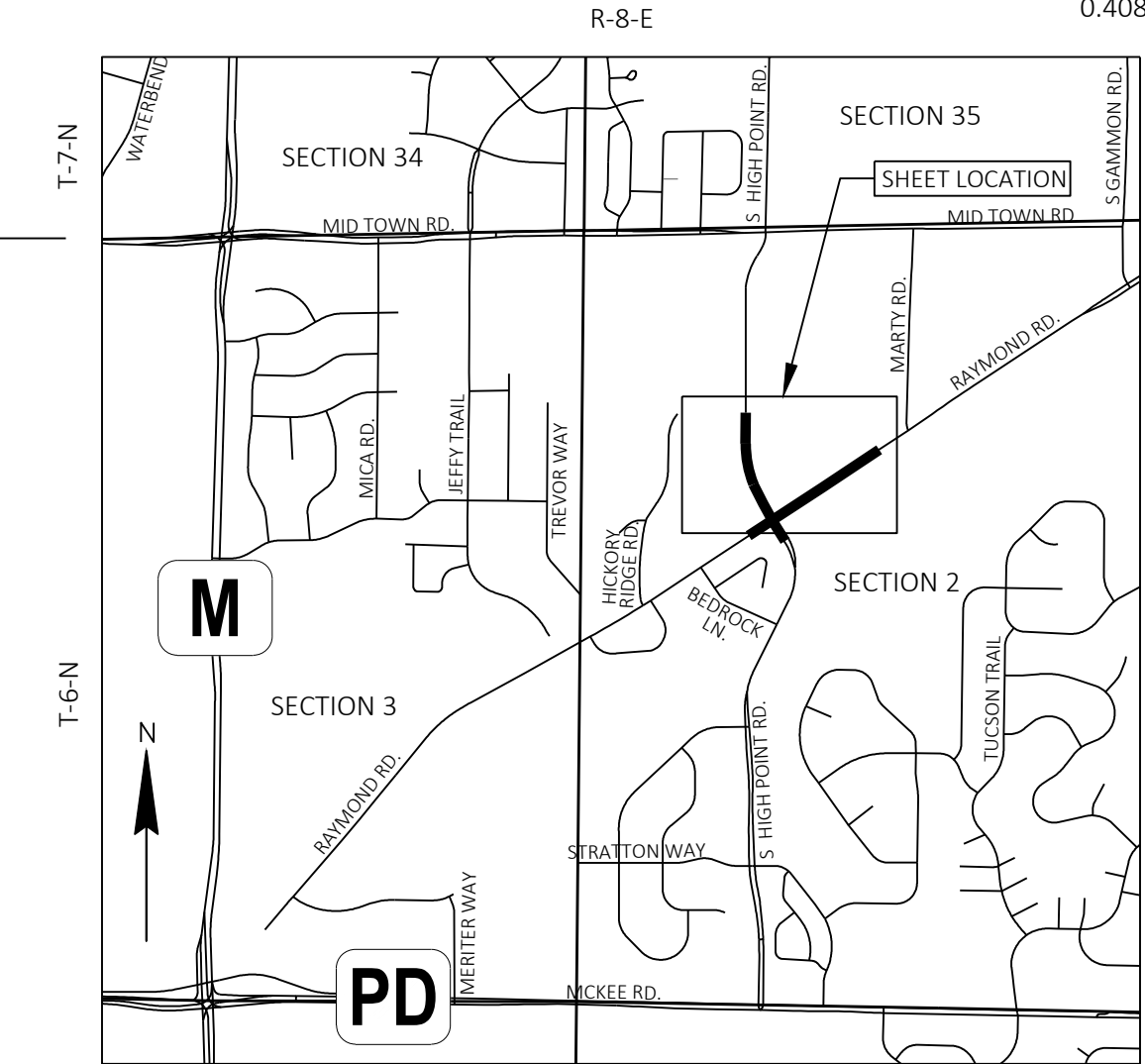


RW COURSE TABLE		
COURSE	BEARING	DISTANCE
100 - 101	S33° 33' 08"E	53.76'
103 - 104	S43° 56' 15"W	56.14'
104 - 105	S57° 26' 51"W	92.04'
105 - 106	SEE CURVE TABLE	
106 - 107	N46° 07' 56"W	36.17'
107 - 108	N46° 07' 56"W	58.00'
108 - 109	SEE CURVE TABLE	
109 - 110	N08° 25' 56"W	50.18'
110 - 111	N37° 36' 58"W	72.26'
111 - 112	SEE CURVE TABLE	
112 - 113	SEE CURVE TABLE	
114 - 115	N88° 53' 55"E	38.01'
115 - 116	N88° 53' 55"E	42.01'
117 - 118	SEE CURVE TABLE	
118 - 119	SEE CURVE TABLE	
119 - 120	SEE CURVE TABLE	
120 - 121	S38° 00' 40"E	16.70'
121 - 122	SEE CURVE TABLE	
122 - 123	N55° 50' 28"E	72.05'
124 - 125	N56° 31' 28"E (N56°09'54"E)	289.19'
125 - 126	S33° 31' 39"E (S33°54'34"E)	27.00'
126 - 127	N56° 31' 28"E (N56°09'54"E)	168.27'
127 - 100	S33° 33' 08"E	39.24'
108 - 122	N55° 50' 28"E	186.90'
IP 1002 - IP 1003	N57° 17' 19"E (N56°53'20"E)	446.42'
IP 1003 - IP 1004	N56° 31' 12"E (N56°07'13"E)	18.31'
IP 1004 - 102	S33° 28' 48"E (S33°52'47"E)	12.56' (13.00')

RW CURVE TABLE				
COURSE	ARC LENGTH	RADIUS	LC BEARING	LC LENGTH
105-106	38.96'	25.00'	N78° 51' 03"W (N78°51'19"W)	35.13'
108 - 109	66.24'	480.00'	N36° 40' 29"E	66.19'
111 - 112	104.73'	382.00'	N29° 45' 42"W	104.41'
112 - 113	320.80'	831.50'	N10° 51' 17"W	318.81'
117 - 118	269.57'	751.50'	S10° 04' 43"E	268.13'
118 - 119	78.07'	414.00'	S25° 45' 25"E	77.95'
119 - 120	32.77'	274.00'	S34° 35' 06"E	32.75'
121 - 122	122.79'	413.00'	S46° 31' 42"E	122.34'
104 - IP 1002	39.92'	25.00'	N11°32'27"E (N11°08'28"E)	35.81'



## TRANSPORTATION PROJECT PLAT NO: 5992-10-73 - 4.01

THAT PART OF OUTLOT 3 OF GLACIER VALLEY, RECORDED AS DOC. #4082046, LOCATED IN AND INCLUDING PART OF THE SE 1/4 OF THE NW 1/4; ALSO PART OF THE NW 1/4 OF THE NW 1/4; ALSO PART OF THE THE SW 1/4 OF THE NW 1/4; ALSO PART OF THE NE 1/4 OF THE NW 1/4; ALL LOCATED IN SECTION 2, T6N, R8E, TOWN OF VERONA AND CITY OF MADISON, DANE COUNTY, WISCONSIN.

RELOCATION ORDER LOCAL STREET C MADISON, HIGH POINT RD RAYMOND RD INTERSECTION DANE COUNTY

TO PROPERLY ESTABLISH, LAY OUT, WIDEN, ENLARGE, EXTEND, CONSTRUCT, RECONSTRUCT, IMPROVE, OR MAINTAIN A PORTION OF THE HIGHWAY DESIGNATED ABOVE, THE STATE OF WISCONSIN DEPARTMENT OF TRANSPORTATION DEEMS IT NECESSARY TO RELOCATE OR CHANGE SAID HIGHWAY AND ACQUIRE CERTAIN LANDS AND INTERESTS OR RIGHTS IN LANDS FOR THE ABOVE-NAMED PROJECT.

TO EFFECT THIS CHANGE, PURSUANT TO AUTHORITY GRANTED UNDER SUBSECTIONS 84.02 (3), 84.09 AND 84.30, WISCONSIN STATUTES, THE DEPARTMENT OF TRANSPORTATION HEREBY ORDERS THAT:  
1. THAT PORTION OF SAID HIGHWAY AS SHOWN ON THIS PLAT IS LAID OUT AND ESTABLISHED TO THE LINES AND WIDTHS AS SO SHOWN FOR THE ABOVE-NAMED PROJECT.  
2. THE LANDS OR INTERESTS OR RIGHTS IN LANDS AS SHOWN ON THIS PLAT ARE REQUIRED BY THE DEPARTMENT FOR THE ABOVE PROJECT AND SHALL BE ACQUIRED IN THE NAME OF THE STATE OF WISCONSIN, PURSUANT TO THE PROVISIONS OF SUBSECTIONS 84.09 (1) OR (2), WISCONSIN STATUTES.

### NOTES:

POSITIONS SHOWN ON THIS PLAT ARE WISCONSIN COORDINATE REFERENCE SYSTEM COORDINATES (WISCRS), DANE COUNTY, NAD83(2011), IN U.S. SURVEY FEET. VALUES ARE GRID COORDINATES, GRID BEARINGS, AND GRID DISTANCES. GRID DISTANCES MAY BE USED AS GROUND DISTANCES.

ALL NEW RIGHT-OF-WAY AND PERMANENT EASEMENT MONUMENTS WILL BE TYPE 2 (TYPICALLY 3/4" X 24" IRON REBARS), UNLESS OTHERWISE NOTED, AND WILL BE PLACED PRIOR TO THE COMPLETION OF THE PROJECT.

EXISTING LOCAL RIGHT-OF-WAY SHOWN HEREIN IS BASED ON THE FOLLOWING POINTS OF REFERENCE: CSM 2921, CSM 8021, THE PLAT OF ESKER, THE PLAT OF GLACIER VALLEY, AND THE PLAT OF MIDPOINT MEADOWS.

FOR THE CURRENT ACCESS/DRIVEWAY INFORMATION, CONTACT THE PLANNING UNIT OF CITY OF MADISON.

FOR ADDITIONAL INFORMATION, REFER TO TITLE SHEET, SHEET 2 OF 3 OF THIS DOCUMENT.

FOR ADDITIONAL TABLES AND UTILITY INFORMATION, REFER TO THE ACCOMPANYING SHEET, SHEET 3 OF 3 OF THIS DOCUMENT.

PI = 200+93.18 'HP'  
Y = 465,081.605  
X = 785,331.491  
Δ = 23°14'49" RT  
D = 12°38'53"  
T = 93.18'  
L = 183.80'  
R = 453.00'  
PC = 200+00.00 'HP'  
PT = 201+83.80 'HP'

PI = 204+68.84 'HP'  
Y = 465,410.255  
X = 785,153.457  
Δ = 23°14'49" RT  
D = 7°13'14"  
T = 143.67'  
L = 284.64'  
R = 793.50'  
PC = 203+24.97 'HP'  
PT = 206+09.61 'HP'

PI = 202+61.04 'HP'  
Y = 785,224.692  
X = 465,218.247  
DB=N61°15'29"W  
DA=N38°00'40"W

PI = 510+99.48  
Y = 465,231.867  
X = 785,710.221

### SCHEDULE OF LANDS & INTERESTS REQUIRED

PARCEL NUMBER	OWNER(S)	INTEREST(S) REQUIRED	FEE R/W ACRES REQUIRED			PLE ACRES	TLE ACRES
			NEW	EXISTING	TOTAL		
1	MICHAEL H. CARPENTER AND BARBARA E. CARPENTER	FEE, PLE, TLE	0.740	--	0.740	0.007 (320 SF)	0.618
2	MICHAEL CARPENTER, ALSO KNOWN AS MICHAEL HUBBARD CARPENTER AND BARBARA E. CARPENTER	FEE, TLE	0.727	--	0.727	--	0.538
3	CITY OF MADISON ENGINEER STORMWATER UTILITY 533	FEE	0.146	--	0.146	--	--

OWNER'S NAMES ARE SHOWN FOR REFERENCE PURPOSES ONLY AND ARE SUBJECT TO CHANGE PRIOR TO THE TRANSFER OF LAND INTERESTS TO THE CITY.

12' UTILITY EASEMENT PER DOCUMENT #4082046

APPROVED FOR THE CITY OF MADISON

RELOCATION ORDER APPROVED BY THE COMMON COUNCIL

DATE: \_\_\_\_\_ CITY CLERK

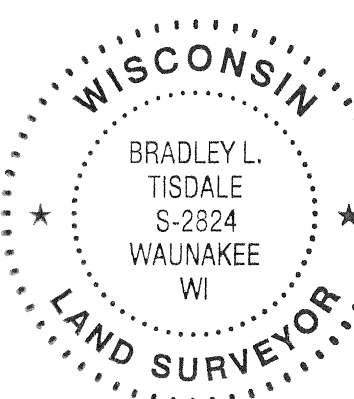
RELOCATION ORDER APPROVED BY THE PLANNING COMMISSION

DATE: \_\_\_\_\_ EXECUTIVE SECRETARY

RELOCATION ORDER APPROVED BY THE BOARD OF PUBLIC WORKS

DATE: \_\_\_\_\_ EXECUTIVE SECRETARY

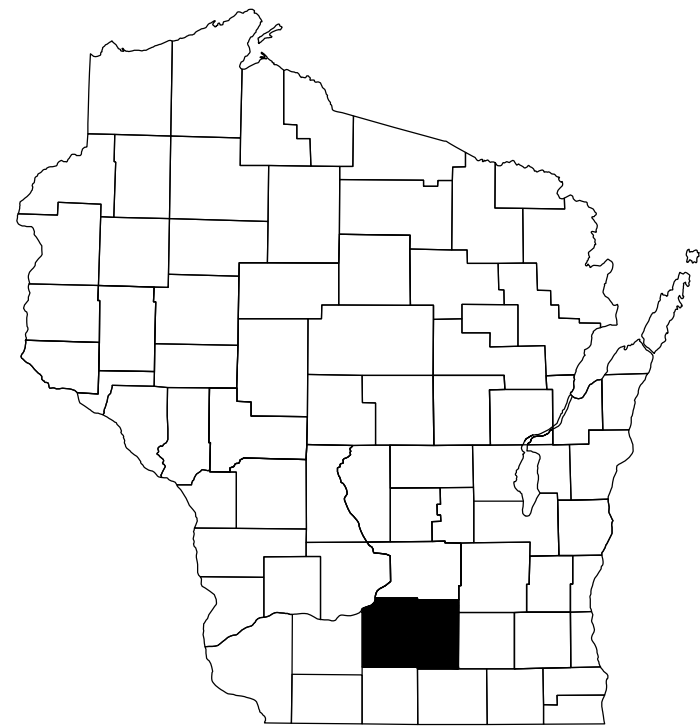
I, BRADLEY L. TISDALE, PROFESSIONAL LAND SURVEYOR, HEREBY CERTIFY THAT IN FULL COMPLIANCE WITH THE PROVISIONS OF SECTION 84.095 OF THE WISCONSIN STATUTES AND UNDER THE DIRECTION OF THE CITY OF MADISON I HAVE SURVEYED AND MAPPED THIS TRANSPORTATION PROJECT PLAT AND SUCH PLAT CORRECTLY REPRESENTS ALL EXTERIOR BOUNDARIES OF THE SURVEYED LAND.



SIGNATURE: *Bradley L. Tisdale* DATE: 10/31/25  
PRINT NAME: BRADLEY L. TISDALE  
REGISTRATION NUMBER: S-2824

THIS PLAT AND RELOCATION ORDER ARE APPROVED FOR THE CITY OF MADISON  
SIGNATURE: \_\_\_\_\_ DATE: \_\_\_\_\_  
PRINT NAME: \_\_\_\_\_





STATE OF WISCONSIN

DEPARTMENT OF TRANSPORTATION

TRANSPORTATION PROJECT PLAT TITLE SHEET

5992-10-73

C MADISON, HIGH POINT ROAD

RAYMOND RD INTERSECTION

LOCAL STREET

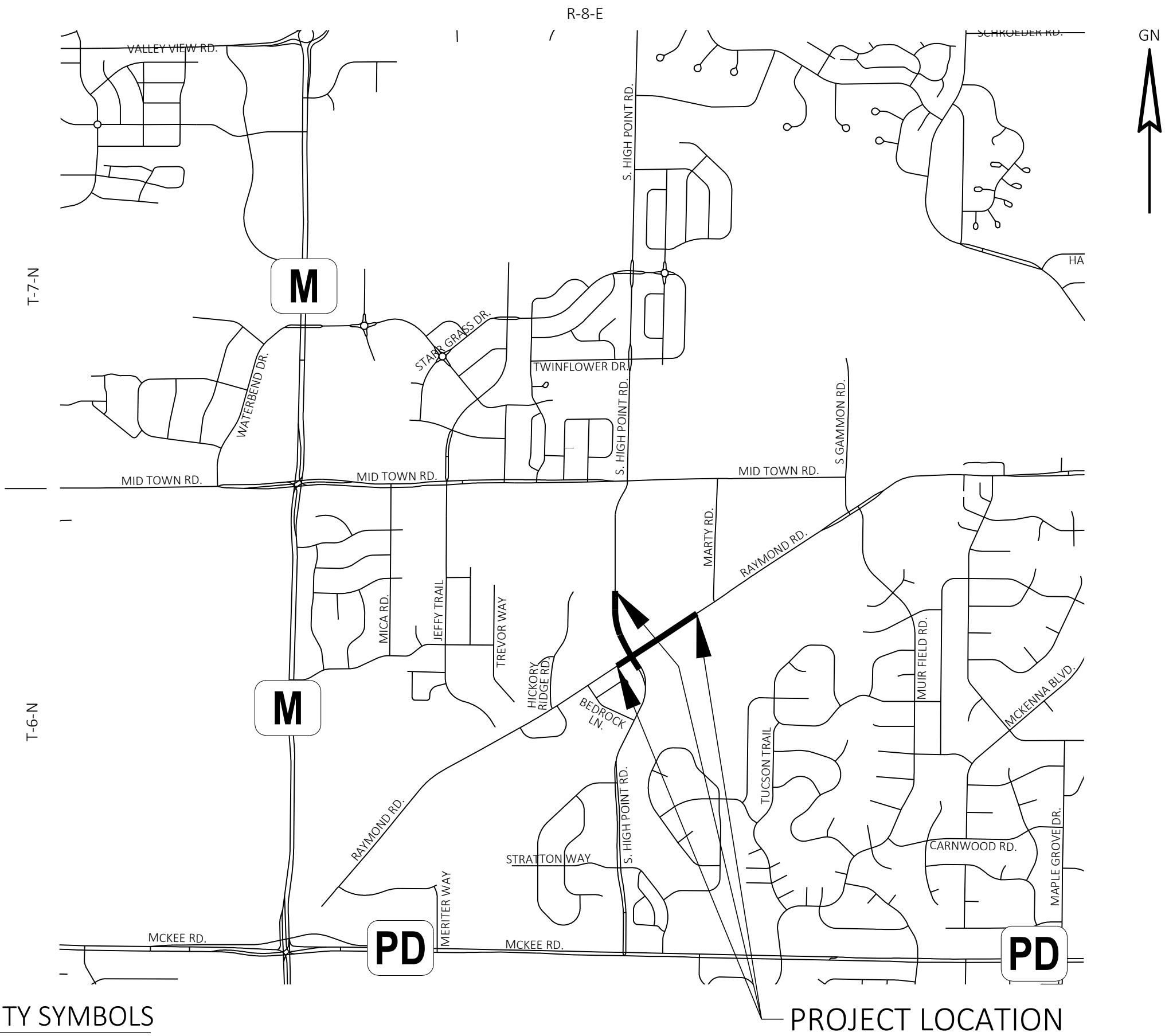
DANE COUNTY

CONVENTIONAL SYMBOLS			
SECTION LINE	---	SECTION CORNER SYMBOL	
QUARTER LINE	---	NON-MONUMENTED R/W POINT	○
SIXTEENTH LINE	---	FOUND SURVEY MONUMENT (SEE FOUND MONUMENT TABLE)	IP
NEW REFERENCE LINE		GEODETIC SURVEY MONUMENT	
NEW R/W LINE	---	NON-PERMITTED SIGN	
EXISTING R/W OR HE LINE	---	PERMITTED SIGN	
PROPERTY LINE	---	ACCESS RESTRICTED BY ACQUISITION	
LOT, TIE & OTHER MINOR LINES	---	NO ACCESS (BY STATUTORY AUTHORITY)	
EXISTING CENTERLINE	---	ACCESS RESTRICTED (BY PREVIOUS PROJECT OR CONTROL)	
CORPORATE LIMITS	---	NO ACCESS (NEW HIGHWAY)	
NEW R/W (FEE OR HE) (HATCHING VARIES BY OWNER)		PARCEL NUMBER	25
TEMPORARY LIMITED EASEMENT AREA		PARALLEL OFFSETS	
EASEMENT AREA (PERMANENT LIMITED OR RESTRICTED DEVELOPMENT)			
BUILDING			
TO BE REMOVED			
BRIDGE			
CULVERT			

CONVENTIONAL ABBREVIATIONS			
ACCESS RIGHTS	AR	PROPERTY LINE	PL
ACRES	AC	RECORDED AS	(100')
ALUMINUM	ALUM	REEL / IMAGE	R/I
AND OTHERS	ET AL	REFERENCE LINE	R/L
BLOCK	BLK	REMAINING	REM
CENTERLINE	C/L	RESTRICTIVE DEVELOPMENT	RDE
CERTIFIED SURVEY MAP	CSM	EASEMENT	
CONCRETE	CONC	RIGHT	RT
COUNTY TRUNK HIGHWAY	CTH	RIGHT OF WAY	R/W
CORNER	COR	SECTION	SEC
DOCUMENT NUMBER	DOC	SEPTIC VENT	SEPV
EASEMENT	EASE	SQUARE FEET	SF
EXISTING	EX	STATE TRUNK HIGHWAY	STH
GAS VALVE	GV	STATION	STA
GRID NORTH	GN	TELEPHONE PEDESTAL	TP
IDENTIFICATION	ID	TRANSPORTATION PROJECT PLAT	TPP
INTERSTATE HIGHWAY	IH	UNITED STATES HIGHWAY	USH
LEFT	LT	VOLUME	V
MONUMENT	MON		
NATIONAL GEODETIC SURVEY	NGS		
NUMBER	NO		
OUTLOT	OL		
PAGE	P		
POINT OF TANGENCY	PT		
POINT OF BEGINNING	POB		
POINT OF CURVATURE	PC		
POINT OF COMPOUND CURVE	PCC		
POINT OF INTERSECTION	PI		

CURVE DATA ABBREVIATIONS			
LONG CHORD	LCH		
LONG CHORD BEARING	LCB		
RADIUS	R		
DEGREE OF CURVE	D		
DELTA ANGLE	Δ/DELTA		
LENGTH OF CURVE	L		
TANGENT	T		
DIRECTION AHEAD	DA		
DIRECTION BACK	DB		

CONVENTIONAL UTILITY SYMBOLS			
UTILITY NUMBER	40		
WATER	W		
GAS	G		
TELEPHONE	T		
OVERHEAD TRANSMISSION LINES	OH		
ELECTRIC	E		
CABLE TELEVISION	TV		
FIBER OPTIC	FO		
SANITARY SEWER	SAN		
STORM SEWER	SS		
COMBINED SEWER	SSS		
ELECTRIC TOWER			
TRANSMISSION STRUCTURES			
	NON-COMPENSABLE		
ELECTRIC POLE			
TELEPHONE POLE			
PEDESTAL (LABEL TYPE) (TV, TEL, ELEC, ETC.)			



THE NOTES, CONVENTIONAL SIGNS, AND ABBREVIATIONS ARE ASSOCIATED WITH EACH TRANSPORTATION PROJECT PLAT FOR PROJECT 5992-10-73

NOTES:

POSITIONS SHOWN ON THIS PLAT ARE WISCONSIN COORDINATE REFERENCE SYSTEM COORDINATES (WISCRS), DANE COUNTY, NAD83(2011), IN U.S. SURVEY FEET. VALUES ARE GRID COORDINATES, GRID BEARINGS, AND GRID DISTANCES. GRID DISTANCES MAY BE USED AS GROUND DISTANCES.

ALL NEW RIGHT-OF-WAY AND PERMANENT EASEMENT MONUMENTS WILL BE TYPE 2 (TYPICALLY 3/4" X 24" IRON REBARS), UNLESS OTHERWISE NOTED, AND WILL BE PLACED PRIOR TO THE COMPLETION OF THE PROJECT.

ALL RIGHT-OF-WAY LINES DEPICTED IN THE NON-ACQUISITION AREAS ARE INTENDED TO RE-ESTABLISH EXISTING RIGHT-OF-WAY LINES AS DETERMINED FROM PREVIOUS PROJECTS, OTHER RECORDED DOCUMENTS, CENTERLINE OF EXISTING PAVEMENTS AND/OR EXISTING OCCUPATIONAL LINES.

RIGHT-OF-WAY BOUNDARIES ARE DEFINED WITH COURSES OF THE PERIMETER OF THE HIGHWAY LANDS REFERENCED TO THE U.S. PUBLIC LAND SURVEY SYSTEM OR OTHER "SURVEYS" OF PUBLIC RECORD.

DIMENSIONING FOR THE NEW RIGHT-OF-WAY IS MEASURED ALONG AND PERPENDICULAR TO THE NEW REFERENCE LINES.

A TEMPORARY LIMITED EASEMENT (TLE) IS A RIGHT FOR CONSTRUCTION PURPOSES, AS DEFINED HEREIN, INCLUDING THE RIGHT TO OPERATE NECESSARY EQUIPMENT THEREON, THE RIGHT OF INGRESS AND EGRESS, AS LONG AS REQUIRED FOR SUCH PUBLIC PURPOSE, INCLUDING THE RIGHT TO PRESERVE, PROTECT, REMOVE, OR PLANT THEREON ANY VEGETATION THAT THE HIGHWAY AUTHORITIES MAY DEEM DESIRABLE. ALL (TLEs) ON THIS PLAT EXPIRE AT THE COMPLETION OF THE CONSTRUCTION PROJECT FOR WHICH THIS INSTRUMENT IS GIVEN.

A PERMANENT LIMITED EASEMENT (PLE) IS A RIGHT FOR CONSTRUCTION AND MAINTENANCE PURPOSES OF PUBLIC STORM WATER MANAGEMENT AND STORM SEWER FACILITIES, AS DEFINED HEREIN, INCLUDING THE RIGHT TO OPERATE NECESSARY EQUIPMENT THEREON AND THE RIGHT OF INGRESS AND EGRESS, AS LONG AS REQUIRED FOR SUCH PUBLIC PURPOSE, INCLUDING THE RIGHT TO PRESERVE, PROTECT, REMOVE, OR PLANT THEREON ANY VEGETATION THAT THE HIGHWAY AUTHORITIES MAY DEEM DESIRABLE, BUT WITHOUT PREJUDICE TO THE OWNER'S RIGHTS TO MAKE OR CONSTRUCT IMPROVEMENTS ON SAID LANDS OR TO FLATTEN THE SLOPES, PROVIDING SAID ACTIVITIES WILL NOT IMPAIR OR OTHERWISE ADVERSELY AFFECT THE HIGHWAY FACILITIES.

PROPERTY LINES SHOWN ON THIS PLAT FOR PROPERTIES BEING IMPACTED ARE DRAWN FROM DATA DERIVED FROM FILED/RECORDED MAPS AND DOCUMENTS OF PUBLIC RECORD. THIS PLAT MAY NOT BE A TRUE REPRESENTATION OF EXISTING PROPERTY LINES, EXCLUDING RIGHT-OF-WAY, AND SHOULD NOT BE USED AS A SUBSTITUTE FOR AN ACCURATE FIELD SURVEY.

FOR THE CURRENT ACCESS/DRIVEWAY INFORMATION, CONTACT THE TRAFFIC ENGINEERING UNIT OF THE CITY OF MADISON.

INFORMATION FOR THE BASIS OF EXISTING HIGHWAY RIGHT-OF-WAY POINTS OF REFERENCE AND ACCESS CONTROL ARE LISTED ON THE TPP DETAIL PAGES.

TRANSPORTATION PROJECT PLAT NO: 5992-10-73 - 4.01  
EXTENSION

RELOCATION ORDER    LOCAL STREET    C MADISON, HIGH POINT RD    RAYMOND RD INTERSECTION    DANE COUNTY

PLE COURSE TABLE		
COURSE	BEARING	DISTANCE
800 - 801	N89° 30' 35"W	20.02'
801 - 802	N00° 11' 52"E	16.00'
802 - 803	S89° 30' 35"E	20.00'
803 - 113	S00° 11' 52"W	10.28'

PLE CURVE TABLE				
COURSE	ARC LENGTH	RADIUS	LC BEARING	LC LENGTH
113 - 800	5.72'	831.50'	S00° 00' 02"W	5.72'

UTILITY INTERESTS REQUIRED				
UTILITY NUMBER	OWNER(S)	PARCEL AFFECTED	INTEREST REQUIRED	EASEMENT AFFECTING
80	MADISON GAS & ELECTRIC	3	RELEASE OF RIGHTS	NO EASEMENT OF RECORD
81	CHARTER COMMUNICATIONS	3	RELEASE OF RIGHTS	PER PLAT OF GLACIER VALLEY; DOCUMENT #4082046
82	TDS TELECOM	3	RELEASE OF RIGHTS	PER PLAT OF GLACIER VALLEY; DOCUMENT #4082046
83	ALLIANT ENERGY	3	RELEASE OF RIGHTS	PER PLAT OF GLACIER VALLEY; DOCUMENT #4082046
84	MT HOREB TELEPHONE COMPANY	3	RELEASE OF RIGHTS	PER PLAT OF GLACIER VALLEY; DOCUMENT #4082046
85	WISCONSIN TELEPHONE COMPANY	3	RELEASE OF RIGHTS	DOCUMENT #822088

TLE COURSE TABLE		
COURSE	BEARING	DISTANCE
500 - 501	N32° 28' 13"W	9.57'
501 - 502	N10° 03' 22"E	26.31'
502 - 503	N76° 20' 21"E	55.76'
503 - 504	N39° 11' 01"E	125.57'
504 - 505	N54° 12' 45"W	94.63'
505 - 506	N25° 20' 02"W	90.02'
506 - 507	N07° 55' 46"W	201.18'
507 - 508	N39° 17' 19"W	66.33'
508 - 509	N04° 00' 54"W	31.05'
509 - 510	N11° 02' 40"E	94.92'
510 - 511	N01° 26' 45"W	210.70'
511 - 114	N88° 53' 55"E	31.88'
114 - 803	S00° 11' 52"W	216.15'
108 - 500	S55° 50' 28"W	137.18'
500 - 122	N55° 50' 28"E	324.07'
116 - 512	N88° 53' 55"E	75.85'
512 - 513	S25° 27' 05"W	76.95'
513 - 514	S00° 11' 52"W	136.36'
514 - 515	S16° 32' 29"W	91.64'
515 - 516	S11° 18' 52"E	200.04'
516 - 517	S31° 56' 56"E	123.54'
517 - 518	S46° 30' 19"E	123.38'
518 - 122	S55° 50' 28"W	15.30'

RW STATION & OFFSET TABLE RAYMOND RD		
POINT	STATION	OFFSET
100	516+40.08	0.00'
101	516+40.08	53.76'
102	512+01.57	53.17'
103	507+66.56	48.65'
104	507+11.81	61.06'
105	506+19.77	59.86'
106	505+94.69	35.26'
107	505+86.65	0.00'
108	505+73.76	-56.55'
123	508+32.68	-60.46'
124	511+82.63	-66.86'
125	514+71.82	-66.47'
126	514+71.81	-39.47'
127	516+40.08	-39.25'

TLE STATION & OFFSET TABLE RAYMOND RD		
POINT	STATION	OFFSET
500	504+36.60	-54.48'
501	504+36.74	-64.05'
502	504+54.80	-83.17'
503	505+07.31	-64.44'
518	507+75.94	-59.60'

TLE STATION & OFFSET TABLE HIGH POINT RD		
POINT	STATION	OFFSET
504	201+26.01 'HP'	-75.79'
505	202+07.40 'HP'	-97.89'
506	202+70.05 'HP'	-83.91'
507	204+58.36 'HP'	-52.55'
508	205+10.95 'HP'	-86.20'
509	205+38.96 'HP'	-85.17'
510	206+24.70 'HP'	-63.83'
511	208+35.31 'HP'	-69.87'
512	208+39.57 'HP'	117.83'
513	207+69.97 'HP'	85.00'
514	206+33.61 'HP'	85.00'
515	205+40.70 'HP'	56.44'
516	203+25.36 'HP'	52.07'
517	201+83.81 'HP'	55.16'

RW STATION & OFFSET TABLE HIGH POINT RD		
POINT	STATION	OFFSET
109	201+04.99 'HP'	-72.45'
110	201+40.44 'HP'	-42.02'
111	202+08.75 'HP'	-39.25'
112	203+02.45 'HP'	-37.70'
113	206+09.61 'HP'	-38.00'
114	208+36.03 'HP'	-38.00'
115	208+36.90 'HP'	0.00'
116	208+37.85 'HP'	42.00
117	206+09.61 'HP'	42.00'
118	203+24.97 'HP'	42.00'
119	202+33.19 'HP'	41.96'
120	202+00.50 'HP'	40.00'
121	201+83.80 'HP'	40.00'
122	200+49.12 'HP'	40.00'

PLE STATION & OFFSET TABLE HIGH POINT RD		
POINT	STATION	OFFSET
800	206+04.15 'HP'	-38.00'
801	206+04.37 'HP'	-58.02'
802	206+19.99 'HP'	-58.00'
803	206+19.89 'HP'	-38.00'

FOUND MONUMENT TABLE			
POINT	Y	X	TYPE
104	464968.023	785419.695	1-1/4" REBAR
114	465780.670	785116.736	1-1/2" PIPE
116	465782.208	785196.742	1-1/2" PIPE
123	465135.941	785454.023	1-1/2" OD PIPE
125	465493.052	785983.782	3/4" REBAR
126	465470.544	785998.695	3/4" REBAR
1000	465382.391	785291.109	1-1/2" OD PIPE
1001	464919.746	785452.488	1-1/4" REBAR
1002	465003.109	785426.859	1-1/4" REBAR
1003	465244.447	785802.488	1-1/4" REBAR
1004	465254.589	785817.741	1-1/4" REBAR
1005	465311.107	785757.470	1-1/2" OD PIPE
1006	465333.765	785742.397	3/4" REBAR
1007	465333.448	785743.184	1-1/2" OD PIPE
1008	465384.062	785867.557	1-1/2" OD PIPE
1009	465406.525	785852.713	3/4" REBAR

NOTES:  
FOR ADDITIONAL INFORMATION, REFER TO TITLE SHEET, RECORDED IN THE OFFICE OF THE REGISTER OF DEEDS IN DANE COUNTY, AS SHEET 2 OF 3 OF THIS DOCUMENT.

POSITIONS SHOWN ON THIS PLAT ARE WISCONSIN COORDINATE REFERENCE SYSTEM COORDINATES (WISCRS), DANE COUNTY, NAD83(2011), IN U.S. SURVEY FEET. VALUES ARE GRID COORDINATES, GRID BEARINGS, AND GRID DISTANCES. GRID DISTANCES MAY BE USED AS GROUND DISTANCES.

PROJECT NUMBER 5992-10-73- 4.01  
SHEET 3 OF 3  
AMENDMENT NO: