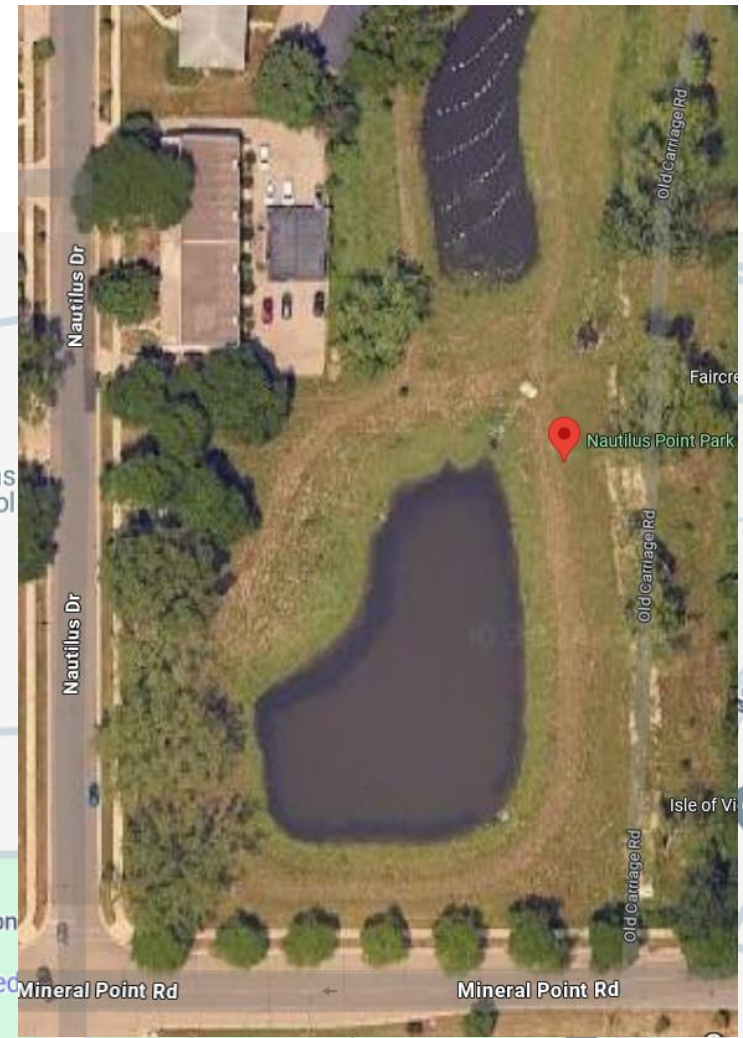
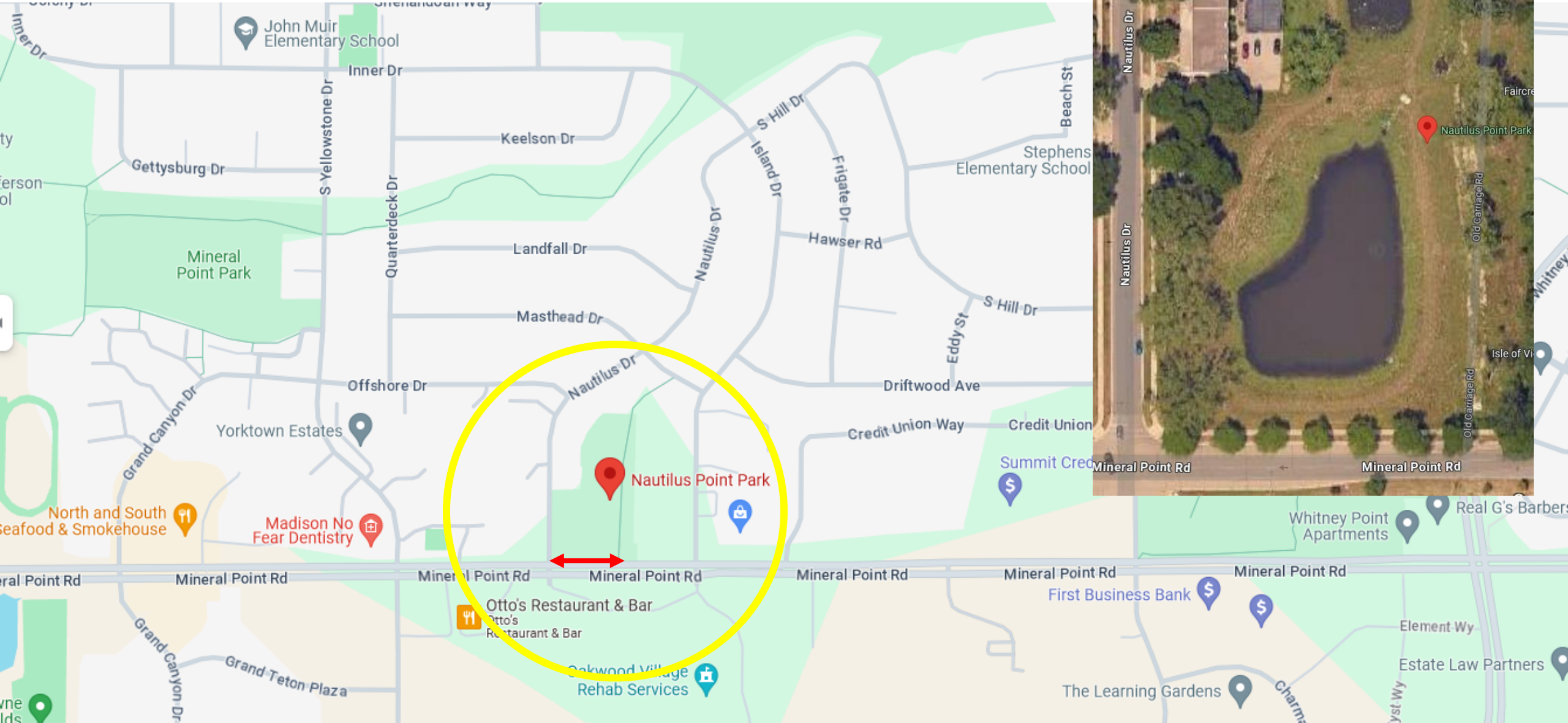


Nautilus Point Park – Sidewalk Widening

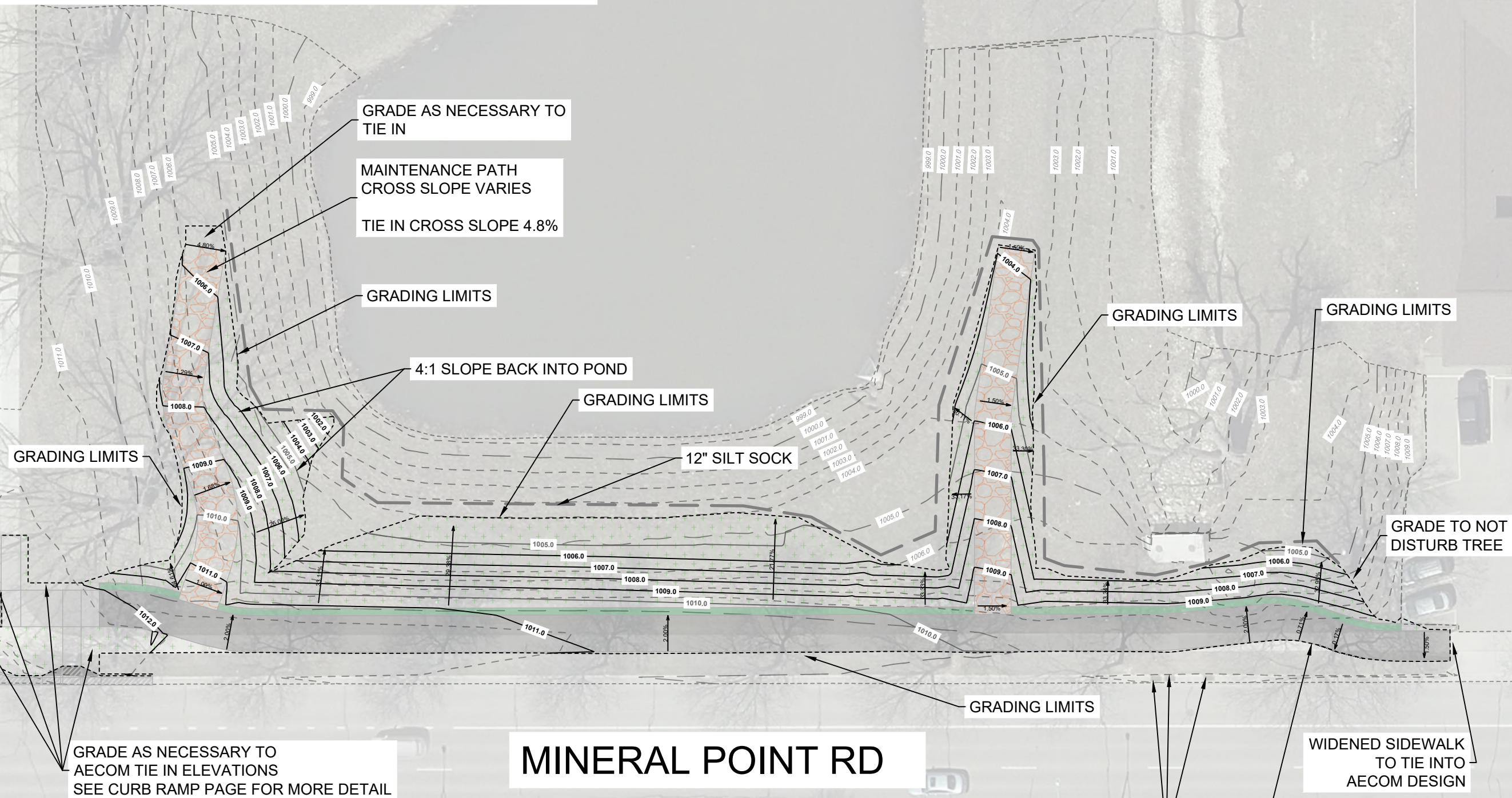


NOTES:

1. SEED ALL AREAS WITHIN THE TERRACE (BETWEEN SIDEWALK AND STREET) WITH TERRACE SEED MIX PER ARTICLE 207 OF THE CITY OF MADISON STANDARD SPECIFICATIONS FOR PUBLIC WORKS CONSTRUCTION.
2. SEED ALL OTHER AREAS WITH AGGRESSIVE NATIVE SEED MIX PER ARTICLE 207 OF THE CITY OF MADISON STANDARD SPECIFICATIONS FOR PUBLIC WORKS CONSTRUCTION.
3. ALL AREAS SHALL RECEIVE CLASS I, URBAN TYPE B ORGANIC MATTING.

NAUTILUS DR

MINERAL POINT RD



GRADE AS NECESSARY TO AECOM TIE IN ELEVATIONS
SEE CURB RAMP PAGE FOR MORE DETAIL

GRADE AS NECESSARY TO TIE IN
MAINTENANCE PATH CROSS SLOPE VARIES
TIE IN CROSS SLOPE 4.8%

WIDENED SIDEWALK TO TIE INTO AECOM DESIGN

RIGID FRAME INLET PROTECTION

CROSS SLOPE VARIES SEE CROSS SECTIONS

MARK	REVISION	DATE	BY
###	###	###	###
###	###	###	###
###	###	###	###
###	###	###	###

GRADING PLAN AND EROSION CONTROL
 M:\DESIGN\Projects\13925\CAD\Streets\13925EN-EC.dwg
 CONTRACT NO: #####





Madison Parks Division

330 E. Lakeside St.
Madison, WI 53715
608-266-4711 • cityofmadison.com/parks



Bill Wheeler
Community Planner
Federal Transit Administration
200 W. Adams Street, Suite 320
Chicago, IL 60606
Email: William.Wheeler@dot.gov

Dear Mr. Wheeler:

The Madison Parks Division has reviewed the proposed change in alignment of the widened sidewalk for approximately 350 feet as it travels adjacent to Nautilus Point Park, as recommended by Madison's Transportation Commission and Common Council. The alignment shift, while creating a slight encroachment onto a drainage facility into the Park, preserves 7 high value Honey Locust terrace trees. The Parks Department does not believe that this alignment change will not adversely affect the activities, features, and attributes of Nautilus Point Park, or the drainage area. Preservation of the terrace trees will help visually preserve the character of the open space.

Sincerely,

A handwritten signature in blue ink that reads "Eric M. Knepp".

Eric Knepp
Parks Superintendent