

InSite Consulting Architects  
 115 E. Main / STE 200  
 Madison, Wisconsin 53703  
 608-254-4829  
 608-257-1702 (fax)  
 info@insitecc.com






RENAISSANCE PROPERTY GROUP, LLC

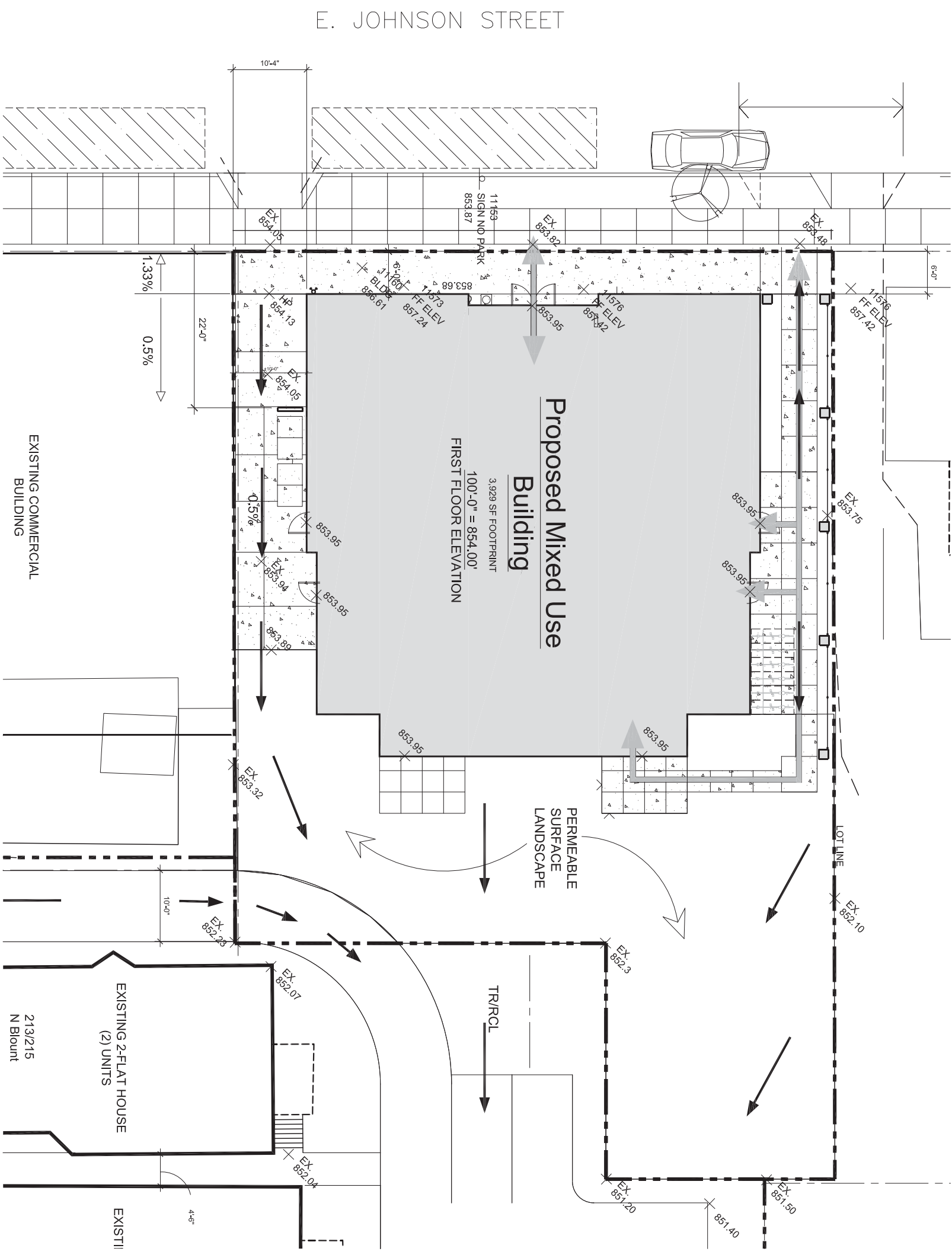
PROPOSED KM2 BUILDING  
 Mixed Use Building  
 707-713 E. Johnson St.  
 Madison, WI 53703

ICA NO. RPG 15-001

LAND USE APPLICATION UPDATES  
 3-3-17

A1.04

- LEGEND**
-  = FLOW DIRECTION
  -  = EX. = EXISTING SPOT ELEVATIONS
  -  = ACCESSIBLE ROUTE



E. JOHNSON STREET

SITE DRAINAGE CONCEPT DIAGRAM

SCALE: 1/16" = 1'-0"



NOT FOR CONSTRUCTION