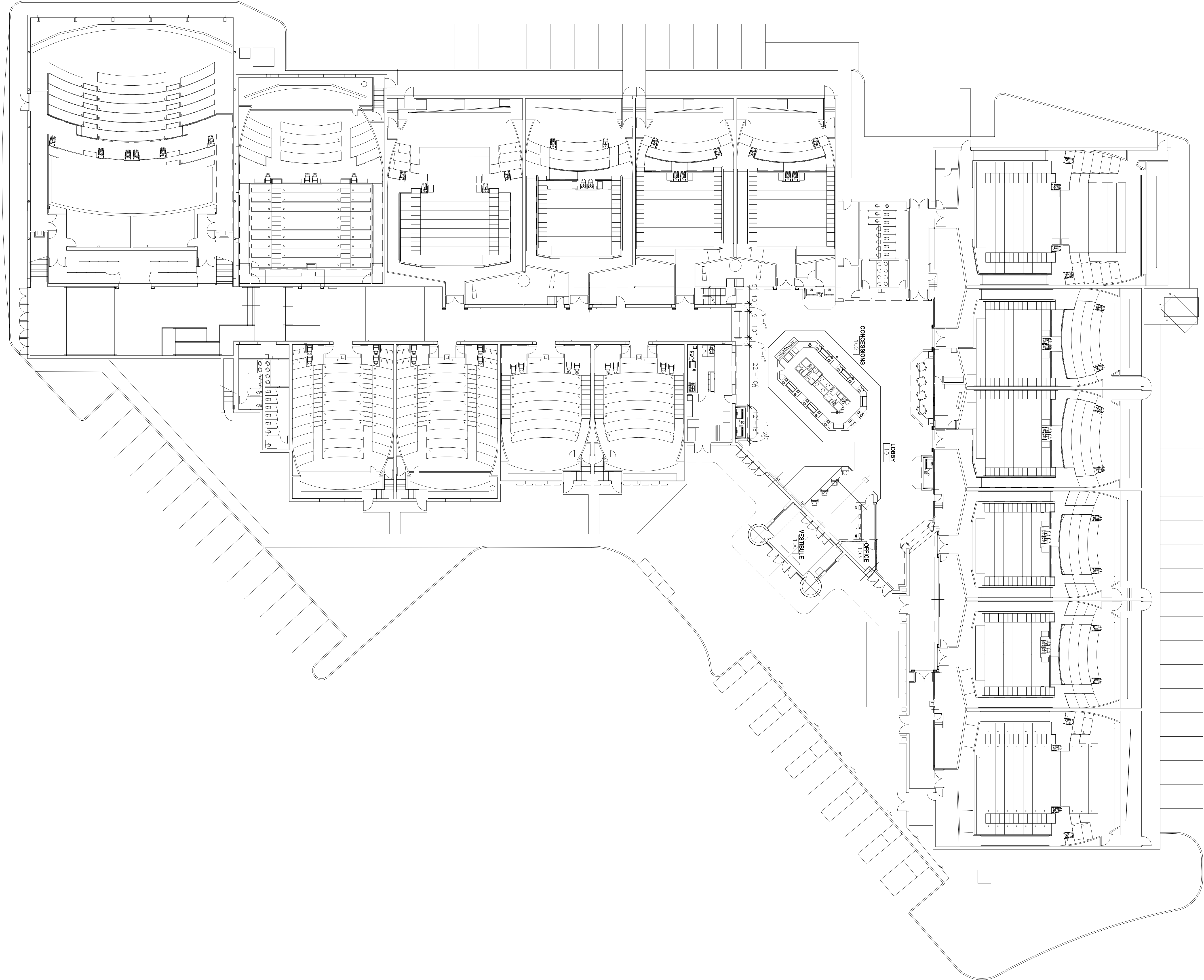


SCHROEDER
and HOLT
ARCHITECTS LTD.
244 N. BROADWAY
MILWAUKEE, WI 53202

PHONE 414.276.1760
FAX 414.276.1764
Email mil@schroederholt.com

INTERIOR REMODEL
POINT CINEMAS
7829 BIG SKY DRIVE
MADISON, WI 53719

DEVELOPED BY:
Marcus Theatre Corporation
100 E. Wisconsin
Milwaukee, WI 53202



FLOOR & EXITING PLAN

SCALE: 1/16" = 1'-0"

NO. DATE BY DESCRIPTION

INFORMATION ON THIS DRAWING TAKES PRECEDENCE
HAVE CONFLICTING INFORMATION. ALL IN THE DOCUMENTS

1/16 51-0" SHEET 1

PROJECT #: 3085

DRAWN BY: JAO CHKD BY: AW

BLDG. SUBMITTAL: --/--/06

FLOOR PLAN
& EXITING PLAN

1/16 51-0" SHEET 1

A1.0

SCHROEDER
and HOLT
ARCHITECTS LTD.

244 N. BROADWAY
MILWAUKEE, WI 53202

PHONE 414.276.1760

FAX 414.276.1764

City of Madison
Urban Design Commission
215 Martin Luther King Jr. Blvd.
Rm. LL100
Madison, Wisconsin, 53703

Re: Marcus Theatre Corporation
Existing Cinema Remodel
Point Cinemas: 7825 Big Sky Drive
Madison, WI
Job No. 3085

To Whom It May Concern:

As part of the submittal requirements for the Urban Design Commission, please find included here the “***Notice of Intent***” for this project.

Project Summary

This is an existing building proposed to be remodeled. The theatres exterior appearance will consist of primarily of existing split-faced, concrete masonry unit (cmu). The cmu exterior will be finished with a two tone paint scheme. The exterior also features an existing decorative EIFS cornice. The accent colors of the cornice tie in with the interior of the building and the proposed new Marquee colors. The entrance will also incorporate new storefront glazing, into the lobby.

The intent of this project is to update the marquee while addressing some general maintenance issues. The scope of the project is to re-skin the structure in a new color palette and incorporate additional Art Deco articulation to improve the daytime appearance of the building. The maintenance portion of the project deals with the existing neon lighting. While the skin is being re-clad, we will take this opportunity to replace all the neon on the marquee.

Project Submittals:

- (14) Application for review
- (14) Letter of Intent
- (14) New Proposed Elevations
- (14) Existing Elevations
- (14) Before and After Elevations
- (14) Proposed Night Time and Day Time Photos
- (14) Colored Partial Elevation

If you are in need of anything else please feel free to give me a call.

Sincerely,

Augustine Vega

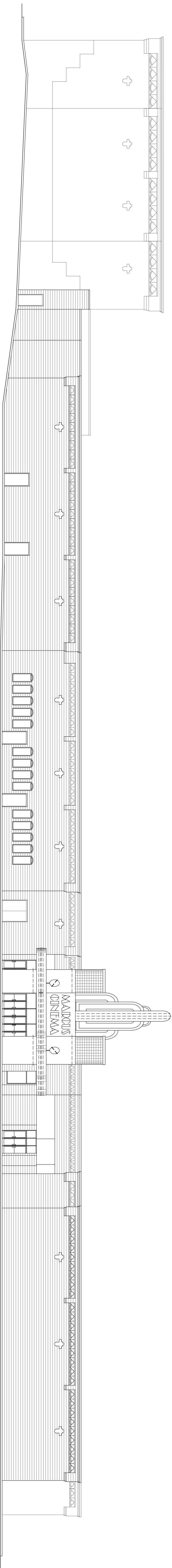




ELEVATION KEY NOTES	
1	BENT ALUMINUM MARQUEE SIGNAGE (PAINTED)
2	NEON TUBE LIGHTING
3	SELF ILLUMINATED "BROADWAY" STYLE BOX LETTER SIGN BOX
4	EXTERIOR INSULATION FINISH SYSTEM (E.I.F.S.)
5	EXISTING EXTERIOR POSTER CASES
6	ALUMINUM AND GLASS STOREFRONT (SEE SHEET A2.0 FOR DETAILS)
7	SPLIT FACE BLOCK (PAINTED) (SEE MATERIALS LEGEND)
8	3'-0"x7'-0"x1/4" P.M. DOOR AND FRAME (PAINTED TO MATCH ADJACENT BLOCK WALLS)
9	EXISTING WALL MOUNTED UP-DOWN LIGHT
10	PRE-FINISHED METAL COPING
11	TYPICAL CONTROL JOINT (12'-0" MAX. OFF OF CORNERS, 24'-0" O.C.)
12	ARCHITECTURAL ART-DECO CHEVRON DETAIL
13	METAL CLAD CANOPY
14	8" GLASS BLOCK
15	METAL COLUMN WRAP WITH REVEALS
MATERIAL LEGEND	
M 1	INTEGRALLY COLORED E.I.F.S. TO MATCH ICI PAINT COLOR RED MAPLE #162, P-14
M 16	PPG SOLAR COOL BRONZE
M 19	VOLTRAC CLEAR GOLD II (ARGON) TUBE LIGHT
M 2	VOLTRAC 3000 WHITE (ARGON) TUBE LIGHT
M 7	VOLTRAC BL51 RICH BLUE (ARGON) TUBE LIGHT
M 9	VOLTRAC GREEN (NEON) TUBE LIGHT
P 7	AREA: ACCENTS & MARQUEE SOURCE: CRESCENT BRONZE POWDER CO. INC. CONTACT: 773.539.2441 (800.445.6810) MFG: CRES-LITE METALLIC PAINTS COLOR: RESISTO COPPER #60 C
P 9	AREA: ACCENTS & MARQUEE SOURCE: CRESCENT BRONZE POWDER CO. INC. CONTACT: 773.539.2441 (800.445.6810) MFG: CRES-LITE METALLIC PAINTS COLOR: SILVERTONE #2025
P 10	BENJAMIN MOORE PAINT COLOR JACK PINE #692
P 13	AREA: MARQUEE SOURCE: CRESCENT BRONZE POWDER CO. INC. CONTACT: 773.539.2441 (800.445.6810) MFG: CRES-LITE METALLIC PAINTS COLOR: ALUMINUM #604
P 15	SOURCE: CRESCENT BRONZE POWDER CO. INC. CONTACT: 773.539.2441 (800.445.6810) MFG: CRES-LITE METALLIC PAINTS COLOR: EXTRA BRILLIANT #242
P 14	ICI PAINT COLOR RED MAPLE #162 MIX # 30YR 10/314
P 15	SPLIT-FACE C.M.U. PAINTED PRATT & LAMBERT COLOR: 2264 "FLAGSTAFF"
P 16	SPLIT-FACE C.M.U. PAINTED PRATT & LAMBERT COLOR: 3259 "KODIAK GREY"
GENERAL ELEVATION NOTES	
1. REFER TO SHEET T1 FOR TYPICAL SYMBOLS.	
2. REFER TO SHEETS T1 FOR TYPICAL ACCESSIBILITY, FIRE AND GENERAL NOTES.	
3. SEE STRUCTURAL DRAWINGS FOR MASONRY, WALL PIERS, REINFORCING, AND LOCATIONS.	
4. ALL EXTERIOR OPENING DIMENSIONS ARE TO OUTSIDE OF OPENINGS UNLESS NOTED OTHERWISE.	
5. MASONRY CONTRACTOR SHALL BE PREPARED TO FIELD CUT QUANTITIES AND ALL DIMENSIONS AND WORK WITH SELECTED MANUFACTURER TO ENSURE THAT WHAT IS ORDERED WILL ESTABLISH A COMPLETE AND FUNCTIONAL INSTALLATION. ERRORS IN FIELD MEASURING WILL BE THE RESPONSIBILITY OF THE GLAZING CONTRACTOR.	
6. MASONRY CONTRACTOR SHALL BE PREPARED TO FIELD CUT BLOCK TO ACHIEVE DESIGN INTENT OF CONSTRUCTION DOCUMENTS. CONTRACTOR SHALL PROVIDE SOLID MASONRY UNITS IN LOCATIONS WHERE STANDARD UNITS WOULD LEAVE HOLES EXPOSED TO ELEMENTS DUE TO DESIGN CONFIGURATION.	
7. GLAZING CONTRACTOR WILL BE REQUIRED TO CONFIRM THE QUANTITIES AND ALL DIMENSIONS AND WORK WITH SELECTED MANUFACTURER TO ENSURE THAT WHAT IS ORDERED WILL ESTABLISH A COMPLETE AND FUNCTIONAL INSTALLATION. ERRORS IN FIELD MEASURING WILL BE THE RESPONSIBILITY OF THE GLAZING CONTRACTOR.	
8. BUILDING SHALL REMAIN WEATHER TIGHT AT ALL TIMES THROUGHOUT THE CONSTRUCTION PROCESS. ANY PENETRATIONS THROUGH EXTERIOR BLOCK WALL SHALL BE SEALED FROM THE ELEMENTS.	

MARQUEE ELEVATION

SD.DWG	SCALE: 1/8"=1'-0"	
	JOB:	3085
	DATE:	12/13/06
	SHEET:	SD-100
MARCUS THEATRES		
MADISON, WI		
7825 BIG SKY DRIVE		
<div>MARCUS THEATRES</div>		
SCHROEDER and HOLT ARCHITECTS LTD.	PHONE 414.276.1760	
244 N. BROADWAY MILWAUKEE, WI 53202	FAX 414.276.1764	
	Email	
	mail@schroederandholt.com	

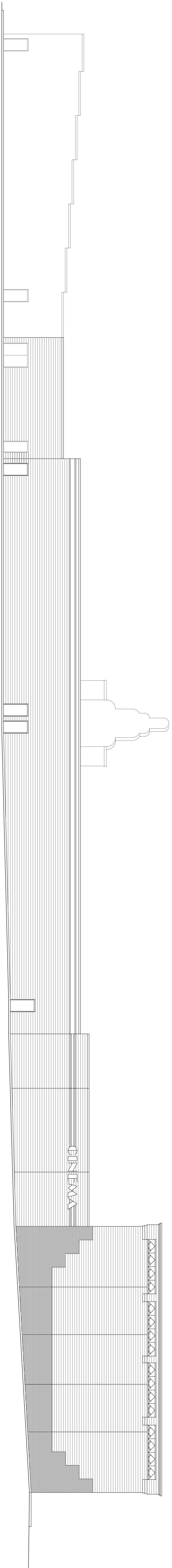


WEST ELEVATION

3085-EXT-R-ELEV

11/-/-/08 SCALE: 1/8"=1'-0"

1

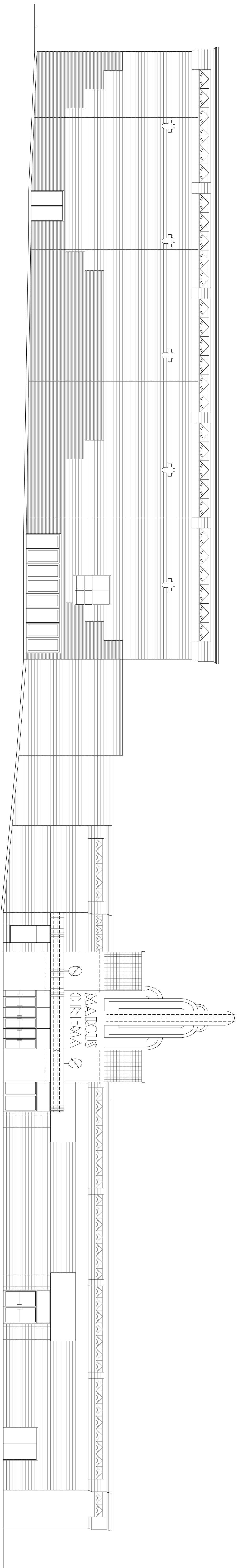


EAST ELEVATION

3085-EXT-R-ELEV

11/-/-/08 SCALE: 1/8"=1'-0"

2

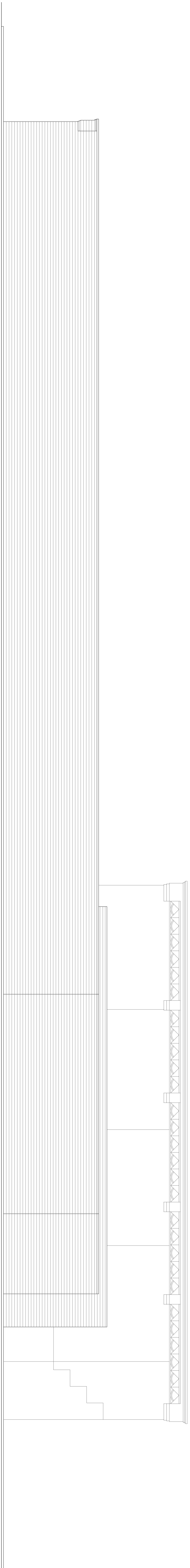


NORTH ELEVATION

3085-EXT-R-ELEV

11/-/-/08 SCALE: 3/32"=1'-0"

3



SOUTH ELEVATION

3085-EXT-R-ELEV

11/-/-/08 SCALE: 3/32"=1'-0"

4

SCHROEDER
and HOLT
ARCHITECTS LTD.
244 N. BROADWAY
MILWAUKEE, WI 53202

PHONE 414.276.1760
FAX 414.276.1764
Email mil@schroederholt.com

INTERIOR REMODEL
POINT CINEMAS
7829 BIG SKY DRIVE
MADISON, WI 53719

DEVELOPED BY:
Marcus Theatre Corporation
100 E. Wisconsin
Milwaukee, WI 53202

INFORMATION ON THIS DRAWING TAKES PRECEDENCE
OVER ANY INFORMATION IN THE DOCUMENTS
HAVE CONFLICTING INFORMATION.

NO.	DATE	BY	DESCRIPTION
1			
2			
3			
4			
5			
6			
7			
8			
9			
10			
11			
12			
13			
14			
15			
16			
17			
18			
19			
20			
21			
22			
23			
24			
25			
26			
27			
28			
29			
30			
31			
32			
33			
34			
35			
36			
37			
38			
39			
40			
41			
42			
43			
44			
45			
46			
47			
48			
49			
50			
51			
52			
53			
54			
55			
56			
57			
58			
59			
60			
61			
62			
63			
64			
65			
66			
67			
68			
69			
70			
71			
72			
73			
74			
75			
76			
77			
78			
79			
80			
81			
82			
83			
84			
85			
86			
87			
88			
89			
90			
91			
92			
93			
94			
95			
96			
97			
98			
99			
100			

SCALE: AS NOTED SHEET:
PROJECT #: 3085
DRAWN BY: JAO CHKD BY: AAV
BLDG. SUBMITTAL: --/-/-/08

A3.0a

EXISTING EXTERIOR ELEVATIONS

INTERIOR REMODEL

DEVELOPED BY:
Marcus Theatre Corporation
100 E. Wisconsin
Milwaukee, WI 53202

7829 BIG SKY DRIVE
MADISON, WI 53719

ELEVATION KEY NOTES

- 1

BENT ALUMINUM MARQUEE SIGNAGE (PAINTED)
- 2

NEON TUBE LIGHTING
- 3

SELF ILLUMINATED "BROADWAY" STYLE BOX LETTER SIGN BOX
- 4

EXTERIOR INSULATION FINISH SYSTEM (EIF.S.)
- 5

EXISTING EXTERIOR POSTER CASES
- 6

ALUMINUM AND GLASS STOREFRONT (SEE SHEET A20 FOR DETAILS)
- 7

SPLIT FACE BLOCK (PAINTED) (SEE MATERIALS LEGEND)
- 8

3'-0"x7'-0"x11 3/4" MAX. COORS AND FRAME (PAINTED TO MATCH ADJACENT BLOCK WALLS)
- 9

EXISTING WALL MOUNTED UP-DOWN LIGHT
- 10

PRE-FINISHED METAL CORNING
- 11

TYPICAL CONTROL JOINT (12'-0" MAX. GFT. OF CORNERS, 24'-0" O.C.)
- 12

ARCHITECTURAL ART-DECO CHEVRON DETAIL
- 13

METAL CLAD CANOPY
- 14

8" GLASS BLOCK
- 15

METAL COLUMN WRAP WITH REVEALS

MATERIAL LEGEND

- 1

INTERIALLY COLORED EIF.S. TO MATCH IC PAINT COLOR RED MAPLE #162, P-14
- 2

PRG SOLAR COOL BRONZE
- 3

VOLTRAC CLEAR GOLD II (ARCON) TUBE LIGHT
- 4

VOLTRAC BLAST RICH BLUE (ARCON) TUBE LIGHT
- 5

VOLTRAC GREEN (NEON) TUBE LIGHT
- 6

AREA: AGENTS & MARQUEE SOURCE: PRESCOTT BRONZE POWDER CO. INC. CONTACT: 773.539.2441 (800.445.6810) COLOUR: RESISTO COPPER #60 C
- 7

AREA: AGENTS & MARQUEE SOURCE: PRESCOTT BRONZE POWDER CO. INC. CONTACT: 773.539.2441 (800.445.6810) COLOUR: RESISTO COPPER #60 C
- 8

AREA: AGENTS & MARQUEE SOURCE: PRESCOTT BRONZE POWDER CO. INC. CONTACT: 773.539.2441 (800.445.6810) COLOUR: RESISTO COPPER #60 C
- 9

AREA: AGENTS & MARQUEE SOURCE: PRESCOTT BRONZE POWDER CO. INC. CONTACT: 773.539.2441 (800.445.6810) COLOUR: RESISTO COPPER #60 C
- 10

AREA: AGENTS & MARQUEE SOURCE: PRESCOTT BRONZE POWDER CO. INC. CONTACT: 773.539.2441 (800.445.6810) COLOUR: RESISTO COPPER #60 C
- 11

AREA: AGENTS & MARQUEE SOURCE: PRESCOTT BRONZE POWDER CO. INC. CONTACT: 773.539.2441 (800.445.6810) COLOUR: RESISTO COPPER #60 C
- 12

AREA: AGENTS & MARQUEE SOURCE: PRESCOTT BRONZE POWDER CO. INC. CONTACT: 773.539.2441 (800.445.6810) COLOUR: RESISTO COPPER #60 C
- 13

AREA: AGENTS & MARQUEE SOURCE: PRESCOTT BRONZE POWDER CO. INC. CONTACT: 773.539.2441 (800.445.6810) COLOUR: RESISTO COPPER #60 C
- 14

AREA: AGENTS & MARQUEE SOURCE: PRESCOTT BRONZE POWDER CO. INC. CONTACT: 773.539.2441 (800.445.6810) COLOUR: RESISTO COPPER #60 C
- 15

AREA: AGENTS & MARQUEE SOURCE: PRESCOTT BRONZE POWDER CO. INC. CONTACT: 773.539.2441 (800.445.6810) COLOUR: RESISTO COPPER #60 C
- 16

AREA: AGENTS & MARQUEE SOURCE: PRESCOTT BRONZE POWDER CO. INC. CONTACT: 773.539.2441 (800.445.6810) COLOUR: RESISTO COPPER #60 C
- 17

AREA: AGENTS & MARQUEE SOURCE: PRESCOTT BRONZE POWDER CO. INC. CONTACT: 773.539.2441 (800.445.6810) COLOUR: RESISTO COPPER #60 C
- 18

AREA: AGENTS & MARQUEE SOURCE: PRESCOTT BRONZE POWDER CO. INC. CONTACT: 773.539.2441 (800.445.6810) COLOUR: RESISTO COPPER #60 C
- 19

AREA: AGENTS & MARQUEE SOURCE: PRESCOTT BRONZE POWDER CO. INC. CONTACT: 773.539.2441 (800.445.6810) COLOUR: RESISTO COPPER #60 C
- 20

AREA: AGENTS & MARQUEE SOURCE: PRESCOTT BRONZE POWDER CO. INC. CONTACT: 773.539.2441 (800.445.6810) COLOUR: RESISTO COPPER #60 C
- 21

AREA: AGENTS & MARQUEE SOURCE: PRESCOTT BRONZE POWDER CO. INC. CONTACT: 773.539.2441 (800.445.6810) COLOUR: RESISTO COPPER #60 C
- 22

AREA: AGENTS & MARQUEE SOURCE: PRESCOTT BRONZE POWDER CO. INC. CONTACT: 773.539.2441 (800.445.6810) COLOUR: RESISTO COPPER #60 C
- 23

AREA: AGENTS & MARQUEE SOURCE: PRESCOTT BRONZE POWDER CO. INC. CONTACT: 773.539.2441 (800.445.6810) COLOUR: RESISTO COPPER #60 C
- 24

AREA: AGENTS & MARQUEE SOURCE: PRESCOTT BRONZE POWDER CO. INC. CONTACT: 773.539.2441 (800.445.6810) COLOUR: RESISTO COPPER #60 C
- 25

AREA: AGENTS & MARQUEE SOURCE: PRESCOTT BRONZE POWDER CO. INC. CONTACT: 773.539.2441 (800.445.6810) COLOUR: RESISTO COPPER #60 C
- 26

AREA: AGENTS & MARQUEE SOURCE: PRESCOTT BRONZE POWDER CO. INC. CONTACT: 773.539.2441 (800.445.6810) COLOUR: RESISTO COPPER #60 C
- 27

AREA: AGENTS & MARQUEE SOURCE: PRESCOTT BRONZE POWDER CO. INC. CONTACT: 773.539.2441 (800.445.6810) COLOUR: RESISTO COPPER #60 C
- 28

AREA: AGENTS & MARQUEE SOURCE: PRESCOTT BRONZE POWDER CO. INC. CONTACT: 773.539.2441 (800.445.6810) COLOUR: RESISTO COPPER #60 C
- 29

AREA: AGENTS & MARQUEE SOURCE: PRESCOTT BRONZE POWDER CO. INC. CONTACT: 773.539.2441 (800.445.6810) COLOUR: RESISTO COPPER #60 C
- 30

AREA: AGENTS & MARQUEE SOURCE: PRESCOTT BRONZE POWDER CO. INC. CONTACT: 773.539.2441 (800.445.6810) COLOUR: RESISTO COPPER #60 C
- 31

AREA: AGENTS & MARQUEE SOURCE: PRESCOTT BRONZE POWDER CO. INC. CONTACT: 773.539.2441 (800.445.6810) COLOUR: RESISTO COPPER #60 C
- 32

AREA: AGENTS & MARQUEE SOURCE: PRESCOTT BRONZE POWDER CO. INC. CONTACT: 773.539.2441 (800.445.6810) COLOUR: RESISTO COPPER #60 C
- 33

AREA: AGENTS & MARQUEE SOURCE: PRESCOTT BRONZE POWDER CO. INC. CONTACT: 773.539.2441 (800.445.6810) COLOUR: RESISTO COPPER #60 C
- 34

AREA: AGENTS & MARQUEE SOURCE: PRESCOTT BRONZE POWDER CO. INC. CONTACT: 773.539.2441 (800.445.6810) COLOUR: RESISTO COPPER #60 C
- 35

AREA: AGENTS & MARQUEE SOURCE: PRESCOTT BRONZE POWDER CO. INC. CONTACT: 773.539.2441 (800.445.6810) COLOUR: RESISTO COPPER #60 C
- 36

AREA: AGENTS & MARQUEE SOURCE: PRESCOTT BRONZE POWDER CO. INC. CONTACT: 773.539.2441 (800.445.6810) COLOUR: RESISTO COPPER #60 C
- 37

AREA: AGENTS & MARQUEE SOURCE: PRESCOTT BRONZE POWDER CO. INC. CONTACT: 773.539.2441 (800.445.6810) COLOUR: RESISTO COPPER #60 C
- 38

AREA: AGENTS & MARQUEE SOURCE: PRESCOTT BRONZE POWDER CO. INC. CONTACT: 773.539.2441 (800.445.6810) COLOUR: RESISTO COPPER #60 C
- 39

AREA: AGENTS & MARQUEE SOURCE: PRESCOTT BRONZE POWDER CO. INC. CONTACT: 773.539.2441 (800.445.6810) COLOUR: RESISTO COPPER #60 C
- 40

AREA: AGENTS & MARQUEE SOURCE: PRESCOTT BRONZE POWDER CO. INC. CONTACT: 773.539.2441 (800.445.6810) COLOUR: RESISTO COPPER #60 C
- 41

AREA: AGENTS & MARQUEE SOURCE: PRESCOTT BRONZE POWDER CO. INC. CONTACT: 773.539.2441 (800.445.6810) COLOUR: RESISTO COPPER #60 C
- 42

AREA: AGENTS & MARQUEE SOURCE: PRESCOTT BRONZE POWDER CO. INC. CONTACT: 773.539.2441 (800.445.6810) COLOUR: RESISTO COPPER #60 C
- 43

AREA: AGENTS & MARQUEE SOURCE: PRESCOTT BRONZE POWDER CO. INC. CONTACT: 773.539.2441 (800.445.6810) COLOUR: RESISTO COPPER #60 C
- 44

AREA: AGENTS & MARQUEE SOURCE: PRESCOTT BRONZE POWDER CO. INC. CONTACT: 773.539.2441 (800.445.6810) COLOUR: RESISTO COPPER #60 C
- 45

AREA: AGENTS & MARQUEE SOURCE: PRESCOTT BRONZE POWDER CO. INC. CONTACT: 773.539.2441 (800.445.6810) COLOUR: RESISTO COPPER #60 C
- 46

AREA: AGENTS & MARQUEE SOURCE: PRESCOTT BRONZE POWDER CO. INC. CONTACT: 773.539.2441 (800.445.6810) COLOUR: RESISTO COPPER #60 C
- 47

AREA: AGENTS & MARQUEE SOURCE: PRESCOTT BRONZE POWDER CO. INC. CONTACT: 773.539.2441 (800.445.6810) COLOUR: RESISTO COPPER #60 C
- 48

AREA: AGENTS & MARQUEE SOURCE: PRESCOTT BRONZE POWDER CO. INC. CONTACT: 773.539.2441 (800.445.6810) COLOUR: RESISTO COPPER #60 C
- 49

AREA: AGENTS & MARQUEE SOURCE: PRESCOTT BRONZE POWDER CO. INC. CONTACT: 773.539.2441 (800.445.6810) COLOUR: RESISTO COPPER #60 C
- 50

AREA: AGENTS & MARQUEE SOURCE: PRESCOTT BRONZE POWDER CO. INC. CONTACT: 773.539.2441 (800.445.6810) COLOUR: RESISTO COPPER #60 C
- 51

AREA: AGENTS & MARQUEE SOURCE: PRESCOTT BRONZE POWDER CO. INC. CONTACT: 773.539.2441 (800.445.6810) COLOUR: RESISTO COPPER #60 C
- 52

AREA: AGENTS & MARQUEE SOURCE: PRESCOTT BRONZE POWDER CO. INC. CONTACT: 773.539.2441 (800.445.6810) COLOUR: RESISTO COPPER #60 C
- 53

AREA: AGENTS & MARQUEE SOURCE: PRESCOTT BRONZE POWDER CO. INC. CONTACT: 773.539.2441 (800.445.6810) COLOUR: RESISTO COPPER #60 C
- 54

AREA: AGENTS & MARQUEE SOURCE: PRESCOTT BRONZE POWDER CO. INC. CONTACT: 773.539.2441 (800.445.6810) COLOUR: RESISTO COPPER #60 C
- 55

AREA: AGENTS & MARQUEE SOURCE: PRESCOTT BRONZE POWDER CO. INC. CONTACT: 773.539.2441 (800.445.6810) COLOUR: RESISTO COPPER #60 C
- 56

AREA: AGENTS & MARQUEE SOURCE: PRESCOTT BRONZE POWDER CO. INC. CONTACT: 773.539.2441 (800.445.6810) COLOUR: RESISTO COPPER #60 C
- 57

AREA: AGENTS & MARQUEE SOURCE: PRESCOTT BRONZE POWDER CO. INC. CONTACT: 773.539.2441 (800.445.6810) COLOUR: RESISTO COPPER #60 C
- 58

AREA: AGENTS & MARQUEE SOURCE: PRESCOTT BRONZE POWDER CO. INC. CONTACT: 773.539.2441 (800.445.6810) COLOUR: RESISTO COPPER #60 C
- 59

AREA: AGENTS & MARQUEE SOURCE: PRESCOTT BRONZE POWDER CO. INC. CONTACT: 773.539.2441 (800.445.6810) COLOUR: RESISTO COPPER #60 C
- 60

AREA: AGENTS & MARQUEE SOURCE: PRESCOTT BRONZE POWDER CO. INC. CONTACT: 773.539.2441 (800.445.6810) COLOUR: RESISTO COPPER #60 C
- 61

AREA: AGENTS & MARQUEE SOURCE: PRESCOTT BRONZE POWDER CO. INC. CONTACT: 773.539.2441 (800.445.6810) COLOUR: RESISTO COPPER #60 C
- 62

AREA: AGENTS & MARQUEE SOURCE: PRESCOTT BRONZE POWDER CO. INC. CONTACT: 773.539.2441 (800.445.6810) COLOUR: RESISTO COPPER #60 C
- 63

AREA: AGENTS & MARQUEE SOURCE: PRESCOTT BRONZE POWDER CO. INC. CONTACT: 773.539.2441 (800.445.6810) COLOUR: RESISTO COPPER #60 C
- 64

AREA: AGENTS & MARQUEE SOURCE: PRESCOTT BRONZE POWDER CO. INC. CONTACT: 773.539.2441 (800.445.6810) COLOUR: RESISTO COPPER #60 C
- 65

AREA: AGENTS & MARQUEE SOURCE: PRESCOTT BRONZE POWDER CO. INC. CONTACT: 773.539.2441 (800.445.6810) COLOUR: RESISTO COPPER #60 C
- 66

AREA: AGENTS & MARQUEE SOURCE: PRESCOTT BRONZE POWDER CO. INC. CONTACT: 773.539.2441 (800.445.6810) COLOUR: RESISTO COPPER #60 C
- 67

AREA: AGENTS & MARQUEE SOURCE: PRESCOTT BRONZE POWDER CO. INC. CONTACT: 773.539.2441 (800.445.6810) COLOUR: RESISTO COPPER #60 C
- 68

AREA: AGENTS & MARQUEE SOURCE: PRESCOTT BRONZE POWDER CO. INC. CONTACT: 773.539.2441 (800.445.6810) COLOUR: RESISTO COPPER #60 C
- 69

AREA: AGENTS & MARQUEE SOURCE: PRESCOTT BRONZE POWDER CO. INC. CONTACT: 773.539.2441 (800.445.6810) COLOUR: RESISTO COPPER #60 C
- 70

AREA: AGENTS & MARQUEE SOURCE: PRESCOTT BRONZE POWDER CO. INC. CONTACT: 773.539.2441 (800.445.6810) COLOUR: RESISTO COPPER #60 C
- 71

AREA: AGENTS & MARQUEE SOURCE: PRESCOTT BRONZE POWDER CO. INC. CONTACT: 773.539.2441 (800.445.6810) COLOUR: RESISTO COPPER #60 C
- 72

AREA: AGENTS & MARQUEE SOURCE: PRESCOTT BRONZE POWDER CO. INC. CONTACT: 773.539.2441 (800.445.6810) COLOUR: RESISTO COPPER #60 C
- 73

AREA: AGENTS & MARQUEE SOURCE: PRESCOTT BRONZE POWDER CO. INC. CONTACT: 773.539.2441 (800.445.6810) COLOUR: RESISTO COPPER #60 C
- 74

AREA: AGENTS & MARQUEE SOURCE: PRESCOTT BRONZE POWDER CO. INC. CONTACT: 773.539.2441 (800.445.6810) COLOUR: RESISTO COPPER #60 C
- 75

AREA: AGENTS & MARQUEE SOURCE: PRESCOTT BRONZE POWDER CO. INC. CONTACT: 773.539.2441 (800.445.6810) COLOUR: RESISTO COPPER #60 C
- 76

AREA: AGENTS & MARQUEE SOURCE: PRESCOTT BRONZE POWDER CO. INC. CONTACT: 773.539.2441 (800.445.6810) COLOUR: RESISTO COPPER #60 C
- 77

AREA: AGENTS & MARQUEE SOURCE: PRESCOTT BRONZE POWDER CO. INC. CONTACT: 773.539.2441 (800.445.6810) COLOUR: RESISTO COPPER #60 C
- 78

AREA: AGENTS & MARQUEE SOURCE: PRESCOTT BRONZE POWDER CO. INC. CONTACT: 773.539.2441 (800.445.6810) COLOUR: RESISTO COPPER #60 C
- 79

AREA: AGENTS & MARQUEE SOURCE: PRESCOTT BRONZE POWDER CO. INC. CONTACT: 773.539.2441 (800.445.6810) COLOUR: RESISTO COPPER #60 C
- 80

AREA: AGENTS & MARQUEE SOURCE: PRESCOTT BRONZE POWDER CO. INC. CONTACT: 773.539.2441 (800.445.6810) COLOUR: RESISTO COPPER #60 C
- 81

AREA: AGENTS & MARQUEE SOURCE: PRESCOTT BRONZE POWDER CO. INC. CONTACT: 773.539.2441 (800.445.6810) COLOUR: RESISTO COPPER #60 C
- 82

AREA: AGENTS & MARQUEE SOURCE: PRESCOTT BRONZE POWDER CO. INC. CONTACT: 773.539.2441 (800.445.6810) COLOUR: RESISTO COPPER #60 C
- 83

AREA: AGENTS & MARQUEE SOURCE: PRESCOTT BRONZE POWDER CO. INC. CONTACT: 773.539.2441 (800.445.6810) COLOUR: RESISTO COPPER #60 C
- 84

AREA: AGENTS & MARQUEE SOURCE: PRESCOTT BRONZE POWDER CO. INC. CONTACT: 773.539.2441 (800.445.6810) COLOUR: RESISTO COPPER #60 C
- 85

AREA: AGENTS & MARQUEE SOURCE: PRESCOTT BRONZE POWDER CO. INC. CONTACT: 773.539.2441 (800.445.6810) COLOUR: RESISTO COPPER #60 C
- 86

AREA: AGENTS & MARQUEE SOURCE: PRESCOTT BRONZE POWDER CO. INC. CONTACT: 773.539.2441 (800.445.6810) COLOUR: RESISTO COPPER #60 C
- 87

AREA: AGENTS & MARQUEE SOURCE: PRESCOTT BRONZE POWDER CO. INC. CONTACT: 773.539.2441 (800.445.6810) COLOUR: RESISTO COPPER #60 C
- 88

AREA: AGENTS & MARQUEE SOURCE: PRESCOTT BRONZE POWDER CO. INC. CONTACT: 773.539.2441 (800.445.6810) COLOUR: RESISTO COPPER #60 C
- 89

AREA: AGENTS & MARQUEE SOURCE: PRESCOTT BRONZE POWDER CO. INC. CONTACT: 773.539.2441 (800.445.6810) COLOUR: RESISTO COPPER #60 C
- 90

AREA: AGENTS & MARQUEE SOURCE: PRESCOTT BRONZE POWDER CO. INC. CONTACT: 773.539.2441 (800.445.6810) COLOUR: RESISTO COPPER #60 C
- 91

AREA: AGENTS & MARQUEE SOURCE: PRESCOTT BRONZE POWDER CO. INC. CONTACT: 773.539.2441 (800.445.6810) COLOUR: RESISTO COPPER #60 C
- 92

AREA: AGENTS & MARQUEE SOURCE: PRESCOTT BRONZE POWDER CO. INC. CONTACT: 773.539.2441 (800.445.6810) COLOUR: RESISTO COPPER #60 C
- 93

AREA: AGENTS & MARQUEE SOURCE: PRESCOTT BRONZE POWDER CO. INC. CONTACT: 773.539.2441 (800.445.6810) COLOUR: RESISTO COPPER #60 C
- 94

AREA: AGENTS & MARQUEE SOURCE: PRESCOTT BRONZE POWDER CO. INC. CONTACT: 773.539.2441 (800.445.6810) COLOUR: RESISTO COPPER #60 C
- 95

AREA: AGENTS & MARQUEE SOURCE: PRESCOTT BRONZE POWDER CO. INC. CONTACT: 773.539.2441 (800.445.6810) COLOUR: RESISTO COPPER #60 C
- 96

AREA: AGENTS & MARQUEE SOURCE: PRESCOTT BRONZE POWDER CO. INC. CONTACT: 773.539.2441 (800.445.6810) COLOUR: RESISTO COPPER #60 C
- 97

AREA: AGENTS & MARQUEE SOURCE: PRESCOTT BRONZE POWDER CO. INC. CONTACT: 773.539.2441 (800.445.6810) COLOUR: RESISTO COPPER #60 C
- 98

AREA: AGENTS & MARQUEE SOURCE: PRESCOTT BRONZE POWDER CO. INC. CONTACT: 773.539.2441 (800.445.6810) COLOUR: RESISTO COPPER #60 C
- 99

AREA: AGENTS & MARQUEE SOURCE: PRESCOTT BRONZE POWDER CO. INC. CONTACT: 773.539.2441 (800.445.6810) COLOUR: RESISTO COPPER #60 C
- 100

AREA: AGENTS & MARQUEE SOURCE: PRESCOTT BRONZE POWDER CO. INC. CONTACT: 773.539.2441 (800.445.6810) COLOUR: RESISTO COPPER #60 C

- GENERAL ELEVATION NOTES
- 1

REFER TO SHEET T1 FOR TYPICAL SYMBOLS.
- 2

REFER TO SHEETS T1 FOR TYPICAL ACCESSIBILITY, FIRE AND
- 3

SEE STRUCTURAL DRAWINGS FOR MASONRY, WALL PIERS,
- 4

OPENINGS UNLESS NOTED OTHERWISE.
- 5

MASONRY CONSTRUCTION SHALL BE PREPARED TO FIELD OUT
- 6

TO ACHIEVE DESIGN INTENT OF CONSTRUCTION DOCUMENTS.
- 7

WHERE STANDARD UNITS WOULD LEAVE HOLES EXPOSED TO
- 8

ELEMENTS DUE TO DESIGN CONSIDERATION, COMPLY THE
- 9

QUANTITIES AND ALL DIMENSIONS AND WORK WITH SELECTED
- 10

ESTABLISH A COMPLETE AND FUNCTIONAL INSTALLATION. ERRORS IN
- 11

FIELD MEASUREMENT WILL BE THE RESPONSIBILITY OF THE GLAZING
- 12

THROUGHOUT EXTERIOR BLOCK WALL SHALL BE SCALED FROM THE
- 13

ELEMENTS.

NOTATION ON THIS DRAWING TAKES PRECEDENCE
OVER ANY OTHER NOTATION IN THE DOCUMENTS
HAVE CONFLICTING INFORMATION.

NO.	DATE	BY	DESCRIPTION
1			
2			
3			
4			
5			
6			
7			
8			
9			
10			
11			
12			
13			
14			
15			
16			
17			
18			
19			
20			
21			
22			
23			
24			
25			
26			
27			
28			
29			
30			
31			
32			
33			
34			
35			
36			
37			
38			
39			
40			
41			
42			
43			
44			
45			
46			
47			
48			
49			
50			
51			
52			
53			
54			
55			
56			
57			
58			
59			
60			
61			
62			
63			
64			
65			
66			
67			
68			
69			
70			
71			
72			
73			
74			
75			
76			
77			
78			
79			
80			
81			
82			
83			
84			
85			
86			
87			
88			
89			
90			
91			
92			
93			
94			
95			
96			
97			
98			
99			
100			

EXTERIOR ELEVATIONS

