



6411 MINERAL POINT ROAD T/ 608 276 9200
MADISON, WI 53705-4395 F/ 608 276 9204

TRANSMITTAL

TO: Mr. Al Martin PROJECT NAME: Hilldale – Retail South
City of Madison Dept. of Planning and 702 North Midvale
Dev.
215 Martin Luther King Jr. Blvd. PROJECT NUMBER: 2006011
Madison, WI 53701 ISSUED BY: Jon Sandeman, AIA, Strang, Inc.
(for Andy Stein, Jos. Freed)
DATE: March 15, 2006

ATTN: Mr. Al Martin COPIES TO: Andy Stein, Jos. Freed
URBAN DESIGN COMMISSION Steve Uhlarik, Jos. Freed
Rob LoBreglio, The Great Dane
Vilis M. Berzins, The Great Dane
Steve Harms, AIA, Strang, Inc.
Mike Sturm, Saiki Design
Matt Yentz, Strand

We are sending

- ATTACHED
- UNDER SEPARATE COVER
- SHOP DRAWINGS
- SAMPLES
- DRAWINGS
- SPECIFICATIONS
- PRINTS
- COLOR SCHEME
- CHANGE ORDER
- CERTIFICATE FOR PAYMENT
- CERTIFICATE FOR SUBSTANTIAL COMPLETION

ARCHITECTURE
ENGINEERING
INTERIOR DESIGN

COPIES	DATE	DESCRIPTION
14	3/15/06	UDC submittal

These are transmitted as checked

- FOR APPROVAL
- AS REQUESTED
- FOR YOUR USE
- PRINTS RETURNED
- FOR YOUR SIGNATURE
- FOR REVIEW & COMMENT
- PRINTS RETURNED AFTER LOAN
- REVIEWED
- REVIEWED W/ COMMENTS
- REJECTED

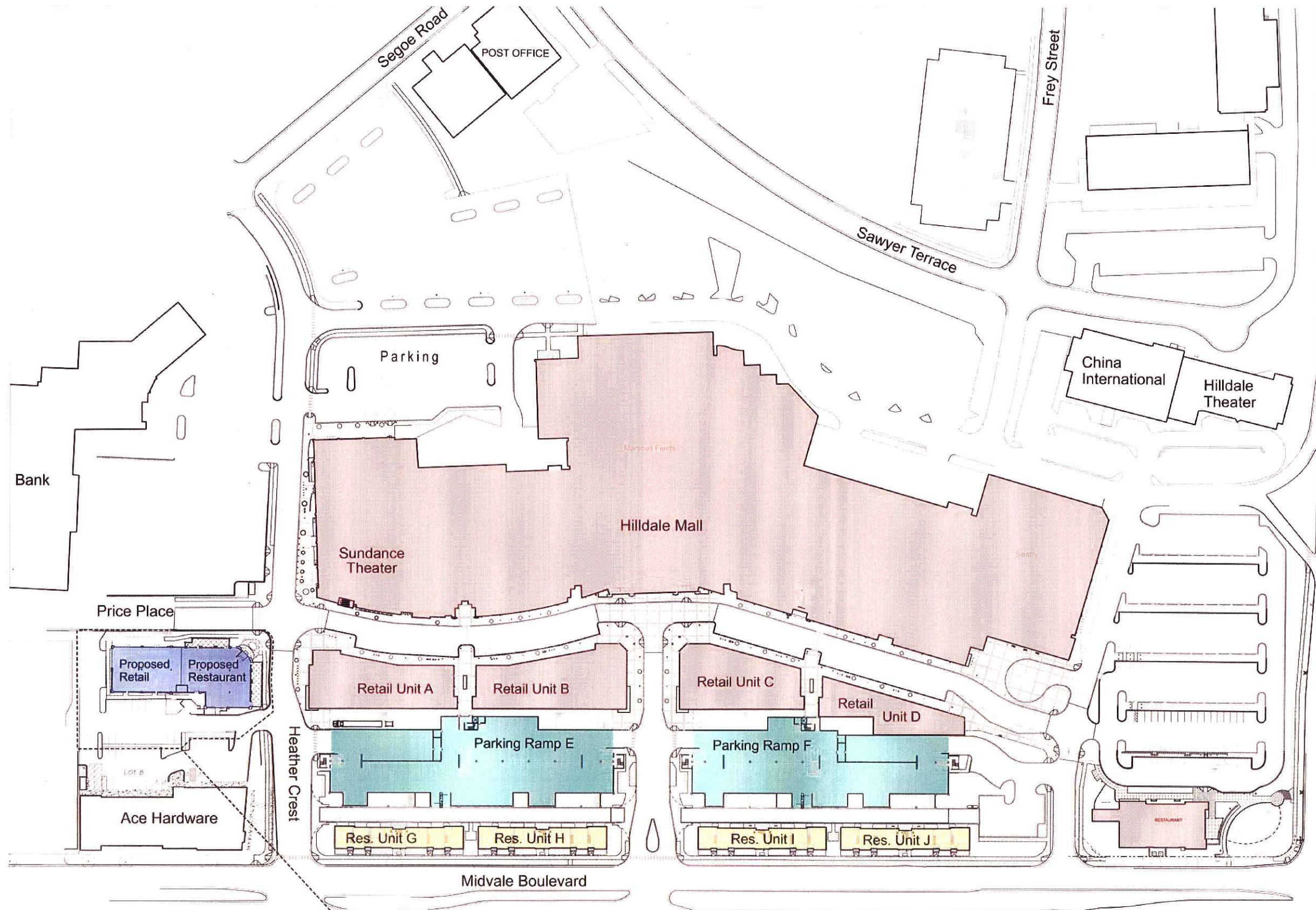
Remarks

Attached, please find copies of drawings for UDC submittal for the 22nd of March.
Thanks!
Jon



**HILLDALE GDP - PUD - SIP AMENDMENT #3
REDEVLEOPMENT OF FIRESTONE BUILDING
AT HEATHERCREST AND PRICE PLACE**

**URBAN DESIGN COMMISSION
MARCH 15, 2006**



SIP#1 Amendment 3 Location

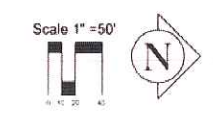
University Ave.

HILLDALE SHOPPING CENTER
 702 N. MIDVALE BOULEVARD
 MADISON, WI
 HILLDALE BUILDING COMPANY LLC

SIP Amendment
 Location Plan

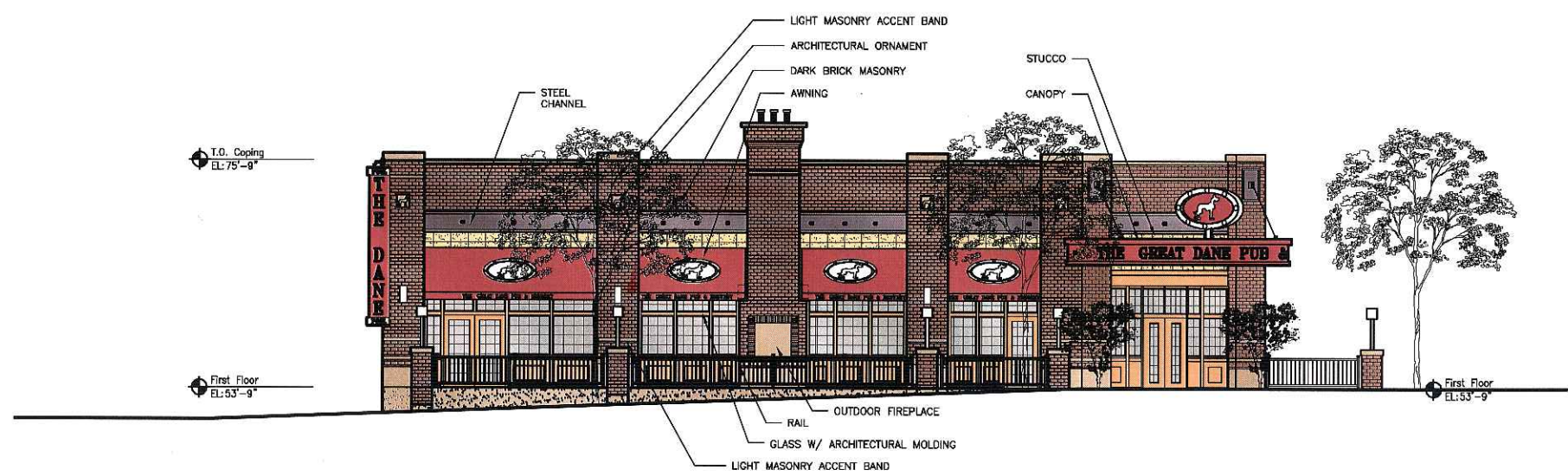
MS
 XS

EX300



ARCHITECTURE
ENGINEERING
INTERIOR DESIGN

STRANG INC.
8411 MINERAL POINT ROAD
MADISON, WI 53705-4395
T/ 608 276 9200
F/ 608 276 9204



AT HEATHERCREST
NORTH ELEVATION
SCALE: 1/16"=1'-0"

DRAWING SET	UDC
COPYRIGHT	3/14/2006
STRANG, INC.	
FILE NAME	
REVISIONS	
DRAWN	
CHECKED	
DATE	3/14/2006
PROJECT NO.	2006011
PROJECT TITLE	

**HILLDALE
RETAIL BUILDING -
SOUTH**

MADISON, WI

SHEET TITLE
**EXTERIOR
ELEVATION**

SHEET NO.
400



STRANG

ARCHITECTURE
ENGINEERING
INTERIOR DESIGN

STRANG INC.
6413 MINERAL POINT ROAD
MADISON, WI 53705-4395
T/ 608 276 9200
F/ 608 276 9204



(WITHOUT RAIL)
AT PRICE PLACE
WEST ELEVATION
SCALE: 1/16" = 1'-0"



(WITH RAIL)
AT PRICE PLACE
WEST ELEVATION
SCALE: 1/16" = 1'-0"

DRAWING SET UDC

COPYRIGHT 3/14/2006
STRANG, INC.

FILE NAME

REVISIONS

DRAWN

CHECKED

DATE 3/14/2006

PROJECT NO. 2006011

PROJECT TITLE

HILLDALE
RETAIL BUILDING -
SOUTH

MADISON, WI

SHEET TITLE

EXTERIOR
ELEVATION

SHEET NO.

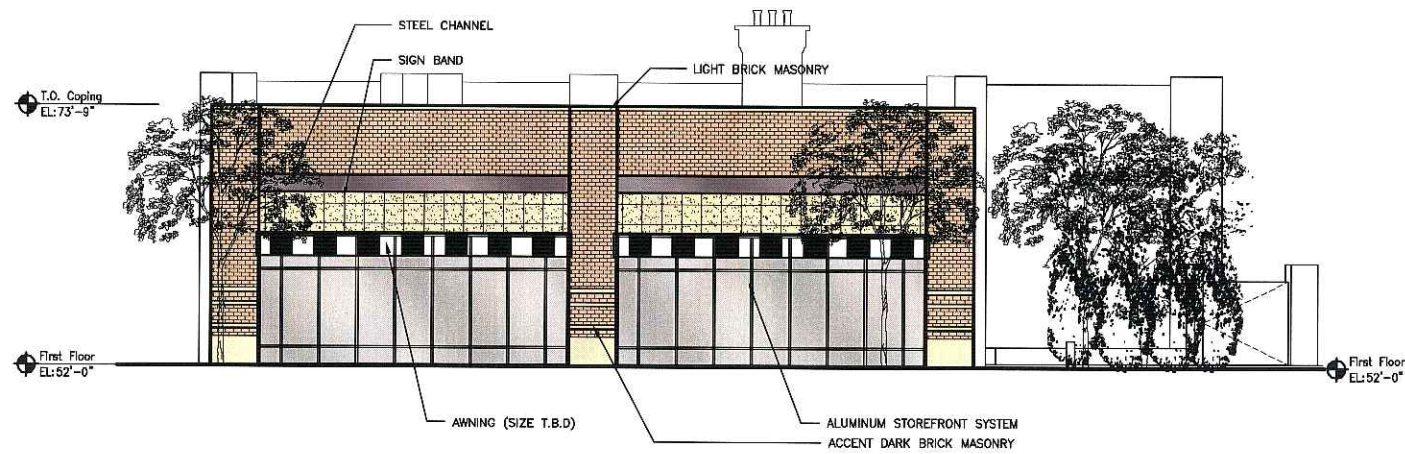
401



STRANG

ARCHITECTURE
ENGINEERING
INTERIOR DESIGN

STRANG INC.
8411 MINERAL POINT ROAD
MADISON, WI 53705-4385
T/ 608 276 9200
F/ 608 276 9204



○ SOUTH ELEVATION
SCALE: 1/16" = 1'-0"

DRAWING SET	UDC
COPYRIGHT	3/14/2006
STRANG, INC.	
FILE NAME	
REVISIONS	
DRAWN	
CHECKED	
DATE	3/14/2006
PROJECT NO.	2006011
PROJECT TITLE	

HILLDALE
RETAIL BUILDING -
SOUTH

MADISON, WI

SHEET TITLE
EXTERIOR
ELEVATION

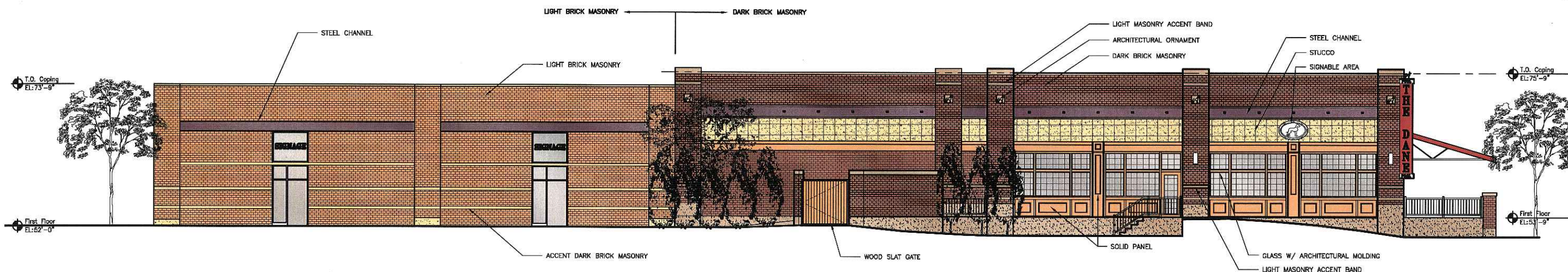
SHEET NO.
402



STRANG

ARCHITECTURE
ENGINEERING
INTERIOR DESIGN

STRANG INC.
6411 MINERAL POINT ROAD
MADISON, WI 53705-4395
T/ 608 276 9200
F/ 608 276 9204



 EAST ELEVATION
SCALE: 1/16" = 1'-0"

DRAWING SET	UDC
COPYRIGHT	3/14/2006
STRANG, INC.	
FILE NAME	
REVISIONS	
DRAWN	
CHECKED	
DATE	3/14/2006
PROJECT NO.	2006011
PROJECT TITLE	

HILLDALE
RETAIL BUILDING -
SOUTH

MADISON, WI

SHEET TITLE

EXTERIOR
ELEVATION

SHEET NO.

403



910 West Wingra Drive
Madison, WI 53713
608 251-4843
608 251-6655 FAX
www.strand.com

HILLDALE SHOPPING CENTER

702 N. MIDVALE BOULEVARD
MADISON, WI

HILLDALE BUILDING COMPANY LLC

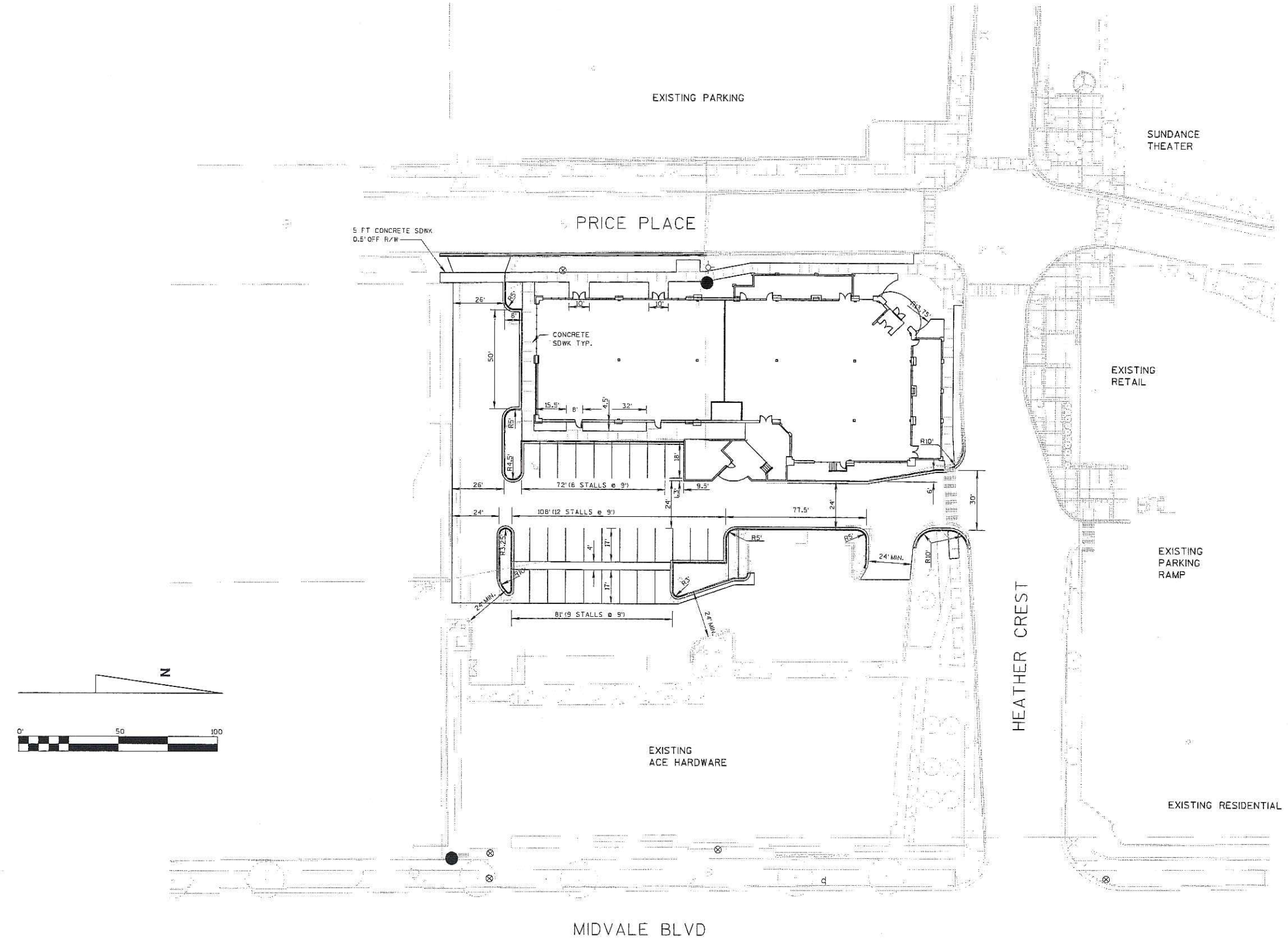
Sheet Title:

SITE LAYOUT PLAN

Revisions		
No.	Date	Description

Project Number:	Drawn By:
x	x
Date Issued:	Revised By:
x 3/8/06	x

Sheet Number:
L 100G



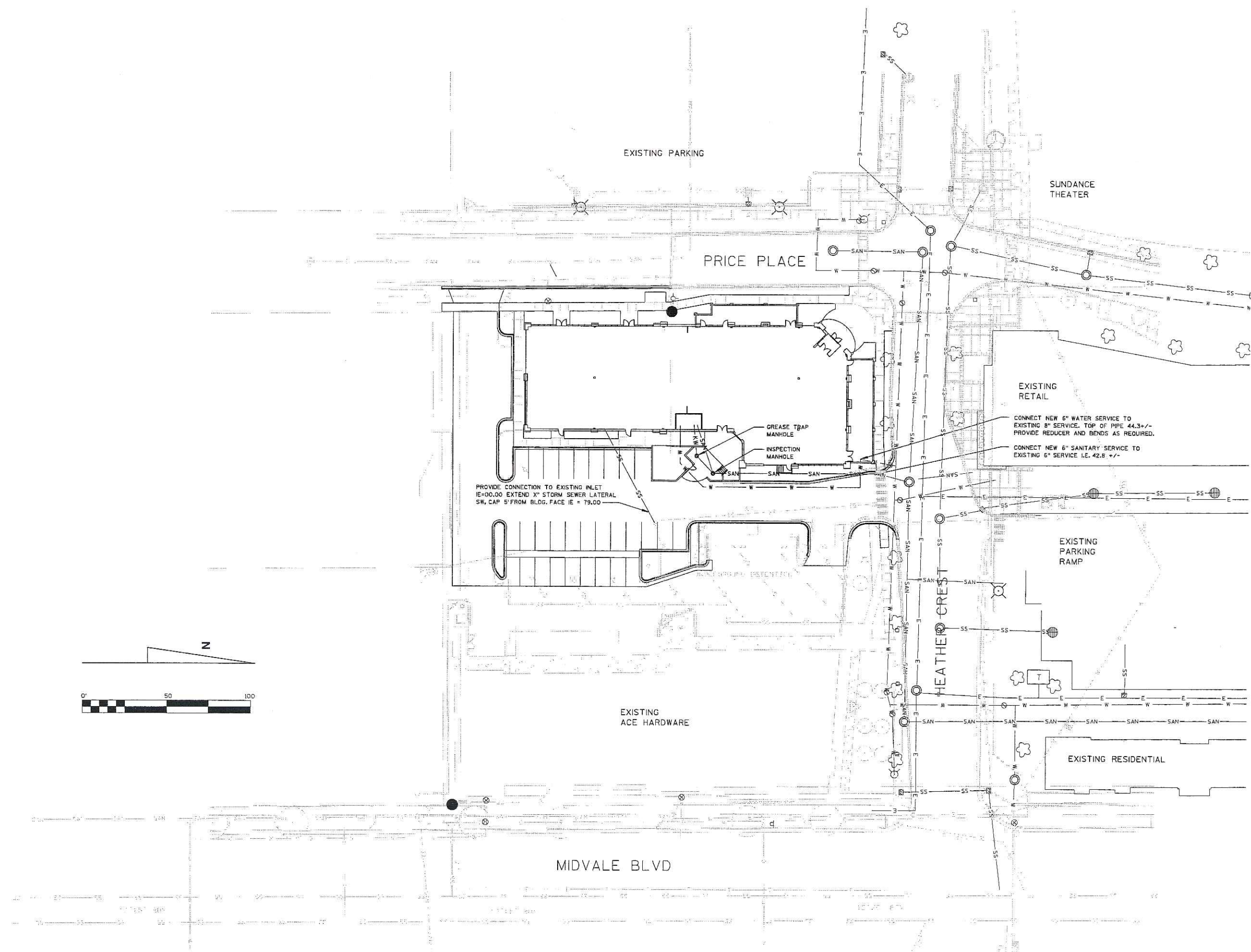


910 West Wingra Drive
 Madison, WI 53715
 608 251-4843
 608 251-8655 FAX
 www.strand.com

HILDALE SHOPPING CENTER

702 N. MIDVALE BOULEVARD
 MADISON, WI

HILDALE BUILDING COMPANY LLC



PROVIDE CONNECTION TO EXISTING INLET
 IE=00.00 EXTEND 12" STORM SEWER LATERAL
 SW, CAP 5' FROM BLDG. FACE IE = 79.00

GREASE TRAP
 MANHOLE

INSPECTION
 MANHOLE

CONNECT NEW 6" WATER SERVICE TO
 EXISTING 8" SERVICE. TOP OF PIPE 44.3 +/-
 PROVIDE REDUCER AND BENDS AS REQUIRED.

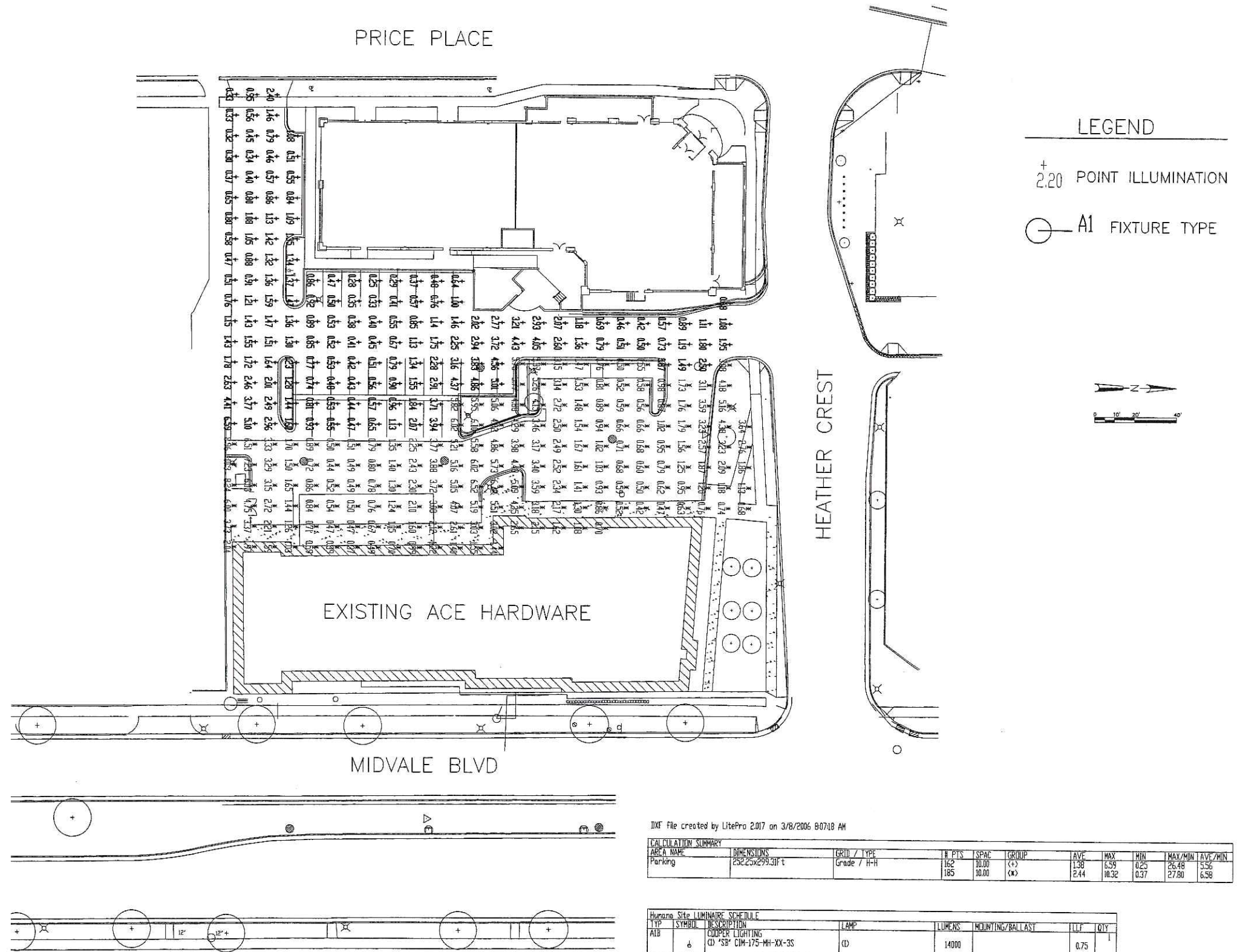
CONNECT NEW 6" SANITARY SERVICE TO
 EXISTING 6" SERVICE I.E. 42.8 +/-

Sheet Title:
**SITE UTILITY
 PLAN**

Revisions			
No.	Date	Description	By

Project Number: x	Drawn By: x
Date Issued: x 3/8/06	Reviewed By: x

Sheet Number:
U 100G



DXF file created by LitePro 2017 on 3/8/2006 8:07:18 AM

CALCULATION SUMMARY										
AREA NAME	DIMENSIONS	GRID / TYPE	# PTS	SPAC	GROUP	AVE	MAX	MIN	MAX/MIN	AVE/MIN
Parking	252.25x299.31ft	Grade / H-H	162	10.00	(+)	1.38	5.59	0.25	25.46	15.56
			185	10.00	(X)	2.44	10.32	0.37	27.80	6.58

Human Site LUMINAIRE SCHEDULE						
TYP	SYMBOL	DESCRIPTION	LAMP	LUMENS	MOUNTING/BALLAST	LLF QTY
A1B	+	COOPER LIGHTING (1) "SP" CIM-175-MH-XX-3S	(1)	14000		0.75 1
E	o	BETA LIGHTING (1) "BETA"	(1)	28000		0.80 6
ELLB	o	Poulsen Lightin (1) "1" SAFTI-360-Black	(1) Lamp catalog number	14000		0.80 2

AREA SUMMARY SCHEDULE					
AREA NAME	GRID	DIMENSIONS	LUMS / CASHES	WATTS / SQ FT	QTY
Parking	DUT	252.25x299.31ft	(A1B) (1) (E) (6) (ELLB) (2)	0.03	1



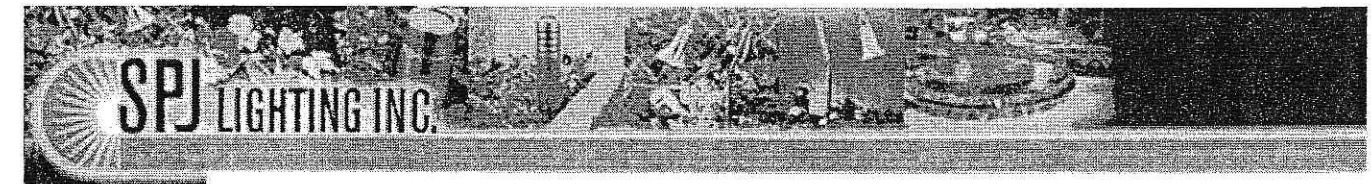
HILLDALE SHOPPING CENTER
702 N. MIDVALE BOULEVARD.
MADISON, WI
HILLDALE BUILDING COMPANY LLC

Sheet Title:
SITE LIGHTING PLAN

Revisions:		
No.	Date	Description
1		Various Revisions

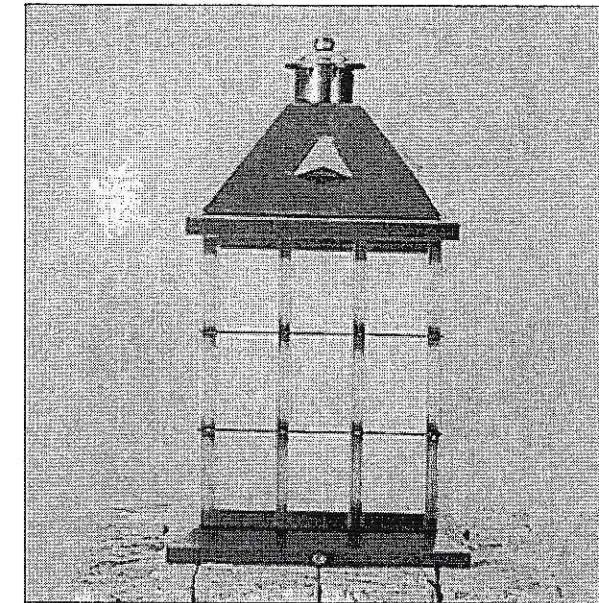
Project Number: 884-208	Drawn By: X
Date Issued: 03-08-06	Reviewed By: X

Sheet Number:
E100G



- About SPJ
- Product
- Where to Buy
- Contact Us
- New Products

- SPJ31-06A, Solid Brass Column Mount Lighting



Shown: Bronze Finish / Frosted Seedy Glass

Model: SPJ31-06A

Mounting: Column Mount

Socket: (3) Light Candelabra

Electrical: 120V or 12V

Lamp: Incandescent, 7W, 15W, 25W, 50W

Dimensions

SPJ31-06A 9"W x 17-1/2"H x 10" Sq. (Shown)

SPJ31-06B 12"W x 22"H x 13" Sq.

Options: Brass finish in a wide variety of colors and glass options. Also available in compact fluorescent. Custom Sizes Available



[Download Detailed Specification](#)

.....
General Product Information

Applications

Commercial Lighting, Landscape, Residential

Certifications

Title 24 Compliant, UL

Finish Options

Aged Brass, Autumn, Black, Bronze, Custom - Contact Factory, Gun Metal, Matte Bronze, Moss, Rusty, Satin Nickel, Verde, White

Glass Options

Clear, Clear Seedy, Frost, Frosted Seedy, Honey Iridescent, Honey Swirl, White

Iridescent

Housing
Brass

Light Source
Compact Fluorescent, Incandescent

Location
Outdoor

Mounting Styles
Column

Voltage Type
Line Voltage, Low Voltage

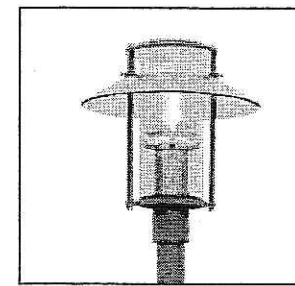
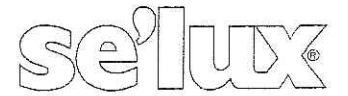
.....
Customer Service Tools:

- [Contact SPJ](#)
- [Where to Buy These Products](#)
- [Contact Local Sales Representative](#)
- [Preview other products in this category](#)
- [Return to main menu](#)

Login Required for the following:
[Order Literature](#) | [Request Quotation](#) | [Request Design Assistance](#)



Saturn 4



Project: _____

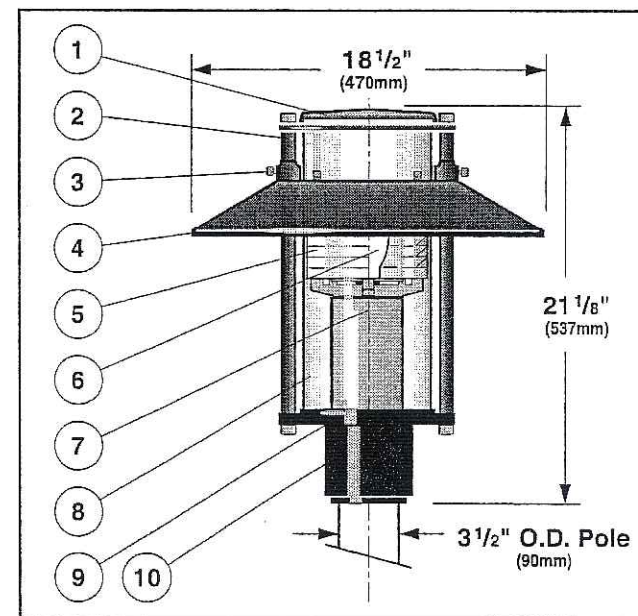
Type: _____ Qty: _____

SA4	Shielding	Mounting	Lamp Type/ Wattage	Finish	Voltage	Option
Fixture Series						
Pole Series	Height	Finish	Options			

Series	Shielding	Mounting	Lamp Type / Wattage		Finish	Voltage	Options
SA4 Saturn 4	SP Type V Silver Louver WP Type V White Louver MR Type V MTR* 150 Refractor	1 Single 2 Double W Wall Mount	Metal Halide H050** 50w H070 70w H100 100w	HPS S050** 50w S070 70w S100 100w	WH White BK Black BZ Bronze SV Silver SP Specify RAL#	120 208 240 277 347	HS House Side Shield (180°) Consult factory for details

* US Patent No. 4,669,034

** Only available in 120v and 277v



1. Fixture Cover - Aluminum cover with white painted interior for maximum fixture efficiency, has industrial felt gasketing for air circulation. Cover removes for lamp access.

2. Cover Support - Machined support connected to fixture cover with architectural Allen head nut detail.

3. Cover Set Screw - Two stainless steel, socket head cap screws provide attachment of fixture cover and support to 3/4" (19mm) diameter connection rods. Loosening screws allows removal of fixture cover without tools.

4. Fixture Hood - Aluminum shade with white painted interior for maximum reflectivity.

5. Shielding - Select Type V silver louver or white louver; or Type V MTR 150 refractor.

6. Lamp - One coated, base down, medium base ED-17 metal halide up to 100w or high pressure sodium up to 100w. Lamp provided by others.

7. Electroblock - Extruded aluminum tubing houses core and coil ballast. Pulse rated porcelain, medium base socket is mounted to die-cast aluminum socket cup for maximum heat dissipation and is pre-wired to ballast. Socket cup attaches to electroblock with two stainless steel screws and is easily removable for ballast service. Consult factory for more detailed ballast information.

8. Diffuser - Clear, U.V. stabilized, acrylic with a minimum wall thickness of 0.125" (3mm).

9. Gasketing - Continuous molded neoprene gasket provides weatherproofing, dust, and insect control at diffuser base.

10. Pole Fitter - Self-leveling, die-cast aluminum, fitter base secured to pole with two, stainless steel, Allen head set screws. 3 1/2" (90mm) I.D. external fitter for 3 1/2" (90mm) O.D. poles.

Exterior Luminaire Finish - SELUX utilizes a high quality Polyester Powder Coating. All SELUX luminaires and poles undergo a five stage intensive pretreatment process where product is thoroughly cleaned, phosphated and sealed. SELUX powder coated products provide excellent salt and humidity resistance as well as ultra violet resistance for color retention. All products are tested in accordance with test specifications for coatings from ASTM and PCI.

Standard exterior colors are White (WH), Black (BK), Bronze (BZ), and Silver (SV). RAL colors (SP) are available, please specify RAL#.

In a continuing effort to offer the best product possible, we reserve the right to change, without notice, specifications or materials that in our opinion will not alter the function of the product. Specification sheets found at www.selux.com/usa are the most recent versions and supersede all other printed or electronic versions.



Union Made
Affiliated with
IBEW Local 363

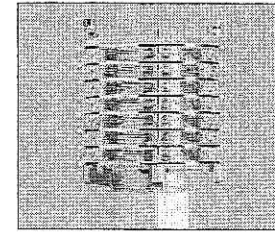
SELUX Corp. © 2002
PO Box 1060, 5 Lumen Lane
Highland, NY 12528
TEL: (845) 691-7723
FAX: (845) 691-6749
E-mail: seluxus@selux.com
Web Site: www.selux.com/usa
SA4-0403-01 (ss-V3.1)

Saturn 4

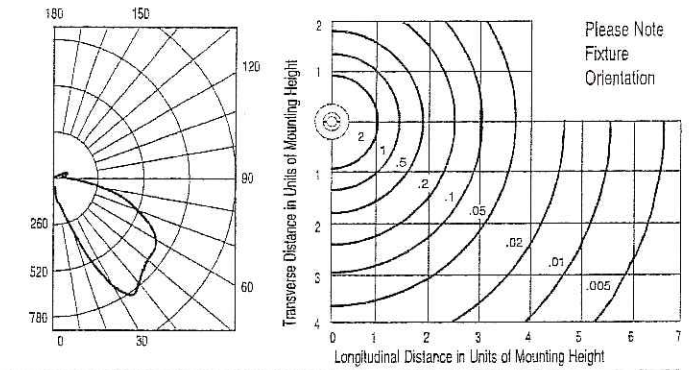


Silver Louver

Catalog # SA4-SP-1-H100
ITL Report # 40540

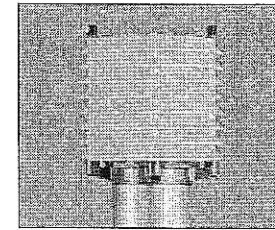


- Mirror finish with prismatic underside shields light source and controls glare.
- Resulting dark light effect offers superior visual comfort.
- Maximum candela of 784.7 at 35° from vertical.
- IES classification, Type V Cutoff.

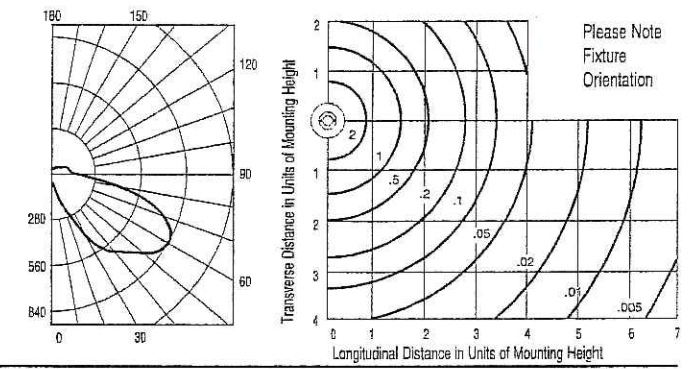


White Louver

Catalog # SA4-WP-1-H100
ITL Report # 40593

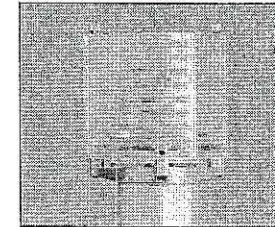


- A se'lux variation of a classic louver design.
- Combines brightness control with a subtle luminance around the source.
- Maximum candela of 839.0 at 60° from vertical.
- IES classification, Type V Cutoff.

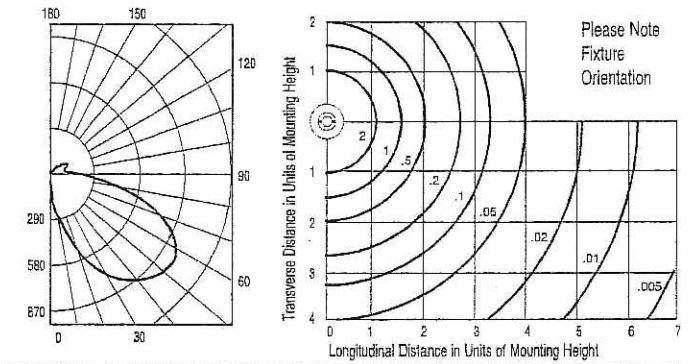


MTR 150 Refractor

Catalog # SA4-MR-1-H100
ITL Report # 40539



- Innovative multi-prisms for total reflection incorporates light-bending characteristics of a prism. US patent no. 4,669,034.
- Directs light precisely with minimum intensity at critical viewing angles.
- Blends efficiency with visual comfort.
- Maximum candela of 893.1 at 55° from vertical.
- IES classification, Type V Cutoff.



HID Lamp Prorate Table (ED-17 Coated, Base-Down Lamp)					
High Pressure Sodium			Metal Halide		
Wattage	Factor	Initial Lumens	Wattage	Factor	Initial Lumens
50	0.47	3700	50	0.44	3400
70	0.74	5800	70	0.64	5000
100	1.13	8800	100	1.00	7800

Conversion Chart	
Values based on 12' mounting height	
Mounting Height	Multiply
10'	1.44
12'	1.00
14'	0.73
16'	0.56
18'	0.44

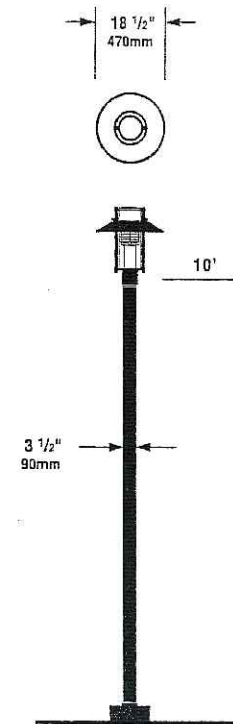
SELUX Corp. © 2002
PO Box 1060, 5 Lumen Lane
Highland, NY 12528
TEL: (845) 691-7723
FAX: (845) 691-6749
E-mail: seluxus@selux.com
Web Site: www.selux.com/usa
SA4-0403-02

In a continuing effort to offer the best product possible, we reserve the right to change, without notice, specifications or materials that in our opinion will not alter the function of the product. Specification sheets found at www.selux.com/usa are the most recent versions and supersede all other printed or electronic versions.

Mounting

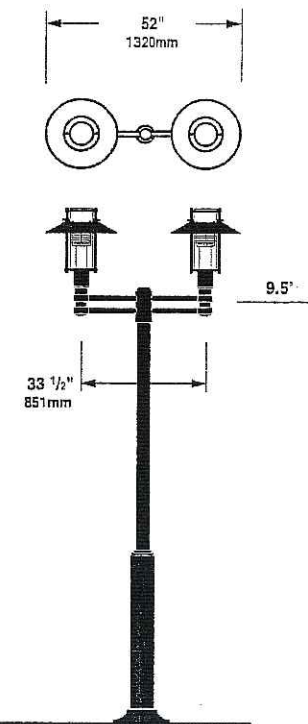
Single

Die-cast aluminum fitter base secured to pole with two, stainless steel, Allen head set screws.



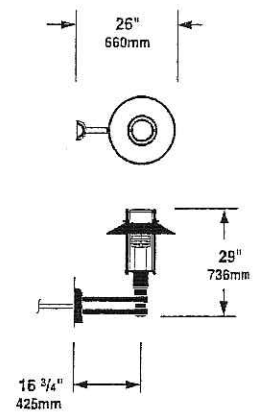
Double

Die-cast aluminum double luminaire mounting arm secured to pole with four stainless steel, Allen head set screws. Outer slip fitter for 3 1/2" (90mm) tenon.

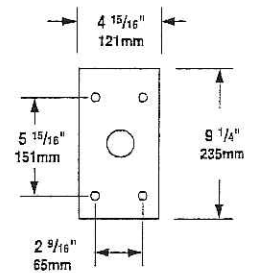


Wall

Die-cast aluminum double round wall mount arm. Secured to wall with 1/4" diameter threaded fasteners (by others).



Wall Arm Mounting Detail (Conduit and mounting hardware by others.)



SELUX Corp. © 2002
 PO Box 1060, 5 Lumen Lane
 Highland, NY 12528
 TEL: (845) 691-7723
 FAX: (845) 691-6749
 E-mail: seluxus@selux.com
 Web Site: www.selux.com/usa
 SA4-0403-03

In a continuing effort to offer the best product possible, we reserve the right to change, without notice, specifications or materials that in our opinion will not alter the function of the product. Specification sheets found at www.selux.com/usa are the most recent versions and supersede all other printed or electronic versions.

Saturn 4

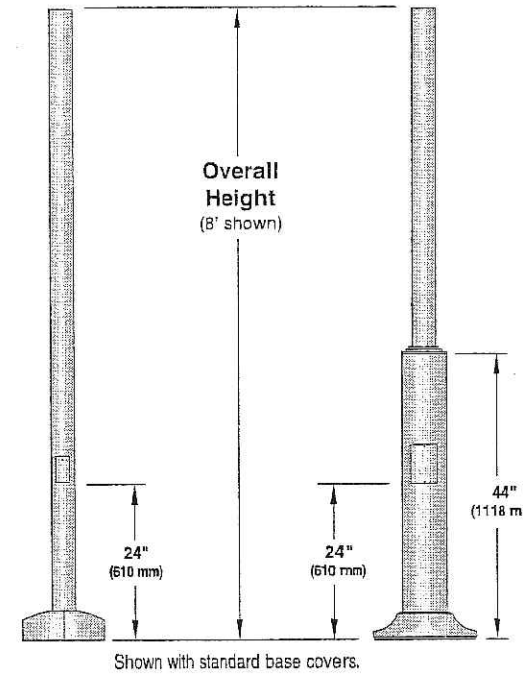


Pole Information

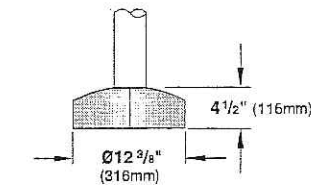
Refer to A35, S635, or S35 Pole specification sheets for construction details, anchorage information and additional options.

A35 & S35
Round Straight Aluminum
& Round Straight Steel Poles

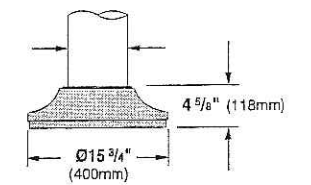
S635
Round Stepped
Steel Pole



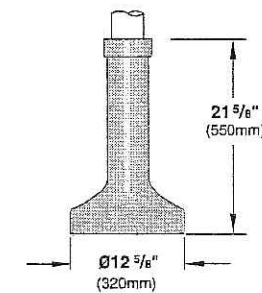
Straight Poles (A35 & S35)
BC5 Standard Base Cover
Two-piece cast aluminum



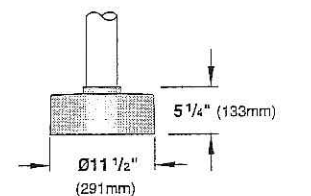
Stepped Steel Pole (S635)
BC6 Standard Base Cover
One-piece cast aluminum



BC1 Optional Base Cover
(A35 & S35) One-piece cast aluminum



BC4 Optional Base Cover
(A35 & S35) One-piece cast aluminum



Pole Series	Bolt Circle	EPA Information (ft ²)					Height	Finish	Options
		70 mph	80 mph	90 mph	100 mph	110 mph			
S635 3 1/2" Diameter Stepped Steel Pole	9"	57.6	44.3	34.6	27.5	22.8	8 8 ft.	WH White BK Black	BC1 Decorative Cast Aluminum Base Cover (for A35 & S35 poles only)
A35 3 1/2" Diameter Straight Aluminum Pole	7 3/4"	16.1	12.2	9.4	7.3	5.9			
S35 3 1/2" Diameter Straight Steel Pole	7 3/4"	14.8	11.3	8.6	6.7	5.4			
S635 3 1/2" Diameter Stepped Steel Pole	9"	45.6	35.0	27.3	21.6	17.8	10 10 ft.	BZ Bronze SV Silver	BC4 One-piece Cast Aluminum Base Cover (for A35 & S35 poles only)
A35 3 1/2" Diameter Straight Aluminum Pole	7 3/4"	12.4	9.3	7.1	5.4	4.3			
S35 3 1/2" Diameter Straight Steel Pole	7 3/4"	11.4	8.6	6.5	4.9	3.9			
S635 3 1/2" Diameter Stepped Steel Pole	9"	37.6	28.7	22.3	17.5	14.4	12 12 ft.	SP Specify RAL#	REC GFCI Receptacle with weather-proof cover*
A35 3 1/2" Diameter Straight Aluminum Pole	7 3/4"	9.9	7.3	5.4	4.0	3.1			
S35 3 1/2" Diameter Straight Steel Pole	7 3/4"	9.1	6.7	4.9	3.6	2.8			
S635 3 1/2" Diameter Stepped Steel Pole	9"	31.7	24.2	18.6	14.6	11.9	14 14 ft.		PCT Photocell Tenon
A35 3 1/2" Diameter Straight Aluminum Pole	7 3/4"	8.0	5.8	4.2	3.0	2.2			
S35 3 1/2" Diameter Straight Steel Pole	7 3/4"	7.3	5.3	3.8	2.7	1.9			
S635 3 1/2" Diameter Stepped Steel Pole	9"	21.7	15.8	12.3	9.6	7.6	16 16 ft.		
A35 3 1/2" Diameter Straight Aluminum Pole	7 3/4"	4.9	3.2	2.2	1.4	.08			
S35 3 1/2" Diameter Straight Steel Pole	7 3/4"	4.4	2.8	1.9	1.2	0.6			

Other pole configurations available, consult factory.

EPA Calculations allow for 1.3 Gust Factor

Effective Projected Area of Single Luminaire = 0.40 ft² (0.04m²) / Weight of Luminaire = 18.0 lbs (8.2kg)

Effective Projected Area of Double Luminaire = 1.22 ft² (0.11m²) / Weight of Double Luminaire (includes arms) = 58.0 lbs (26.3kg)

SELUX Corp. © 2002

PO Box 1060, 5 Lumen Lane

Highland, NY 12528

SA4-0403-04 (6-49016-00)

TEL: (845) 691-7723 FAX: (845) 691-6749

E-mail: seluxus@selux.com

Web Site: www.selux.com/usa

In a continuing effort to offer the best product possible, we reserve the right to change, without notice, specifications or materials that in our opinion will not alter the function of the product. Specification sheets found at www.selux.com/usa are the most recent versions and supercede all other printed or electronic versions.