

FLOOR PLAN GENERAL NOTES:

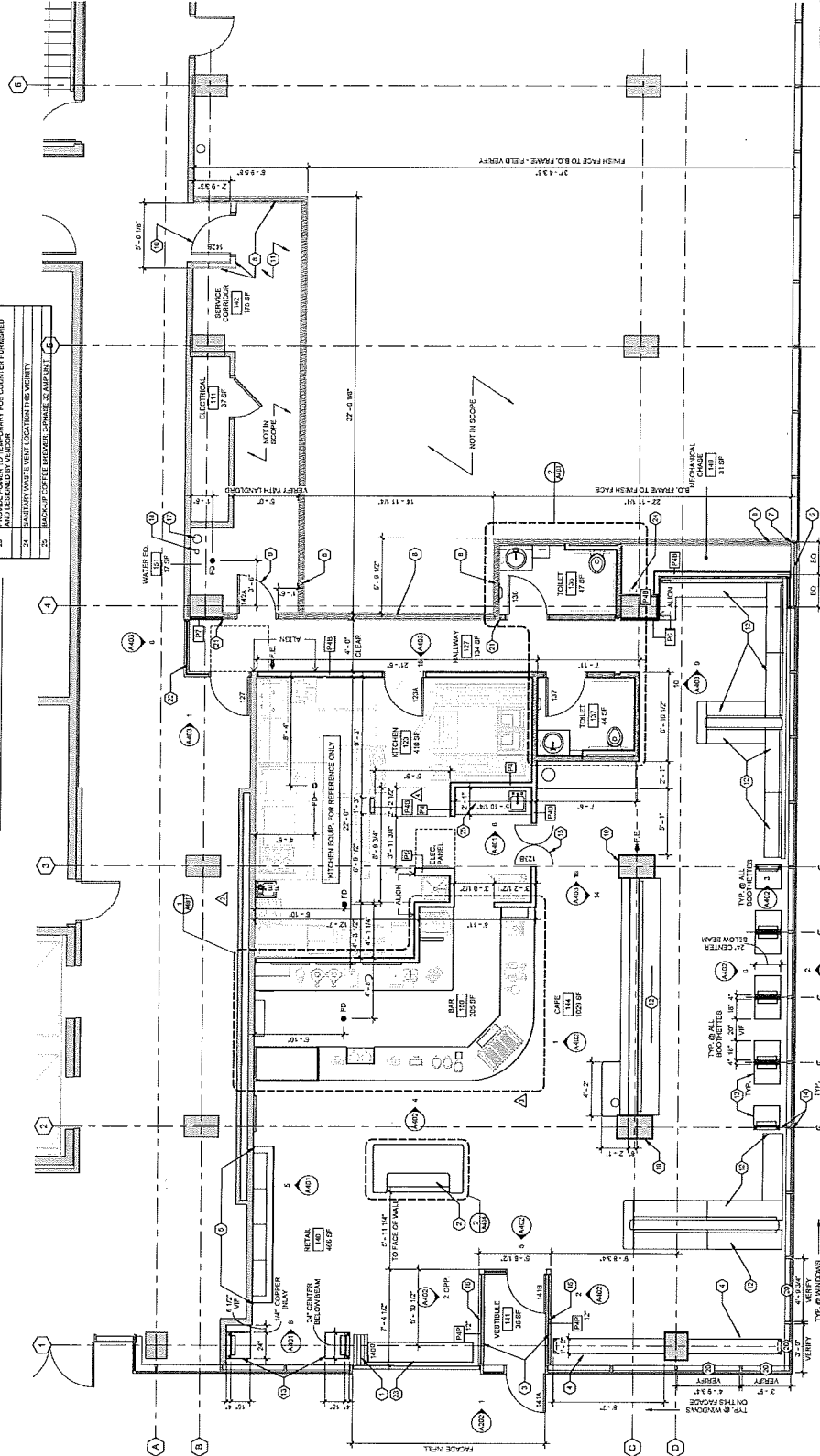
1. FIELD VERIFY ALL DIMENSIONS. BRING ANY DISCREPANCIES TO THE ATTENTION OF THE ARCHITECT/ENGINEER FOR FINAL CORRECTION.
2. SEE SHEET A111 FOR REFLECTED CEILING PLAN.
3. SEE SHEET A112 FOR FINISH PLAN AND SCHEDULES.
4. THIS SHEET, AND ALL OTHER SHEETS, ARE THE PROPERTY OF ARO EBERLE ARCHITECTS. NO PART OF THIS SHEET, OR ANY INFORMATION CONTAINED HEREIN, IS TO BE REPRODUCED OR TRANSMITTED IN ANY FORM OR BY ANY MEANS, ELECTRONIC OR MECHANICAL, INCLUDING PHOTOCOPYING, RECORDING, OR BY ANY INFORMATION STORAGE AND RETRIEVAL SYSTEM, WITHOUT THE WRITTEN PERMISSION OF ARO EBERLE ARCHITECTS.
5. DIMENSIONS ON FLOOR PLAN ARE BASED ON FACE OF FINISH WALL TO FINISH WALL, UNLESS OTHERWISE NOTED.
6. REFER TO DEMOLITION SHEETS FOR COORDINATION OF DEMOLITION SCOPE.
7. ALL WORK TO CONFORM TO 2018 IBC CONTRACTOR RULES & TOOLS.
8. ALL WORK TO CONFORM TO ALL APPLICABLE CODES AND REGULATIONS.
9. ALL WORK TO BE COMPLETED IN ACCORDANCE WITH THE CONTRACT DOCUMENTS.
10. ALL WORK TO BE COMPLETED IN ACCORDANCE WITH THE CONTRACT DOCUMENTS.
11. ALL WORK TO BE COMPLETED IN ACCORDANCE WITH THE CONTRACT DOCUMENTS.
12. ALL WORK TO BE COMPLETED IN ACCORDANCE WITH THE CONTRACT DOCUMENTS.
13. ALL WORK TO BE COMPLETED IN ACCORDANCE WITH THE CONTRACT DOCUMENTS.
14. ALL WORK TO BE COMPLETED IN ACCORDANCE WITH THE CONTRACT DOCUMENTS.
15. ALL WORK TO BE COMPLETED IN ACCORDANCE WITH THE CONTRACT DOCUMENTS.
16. ALL WORK TO BE COMPLETED IN ACCORDANCE WITH THE CONTRACT DOCUMENTS.
17. ALL WORK TO BE COMPLETED IN ACCORDANCE WITH THE CONTRACT DOCUMENTS.
18. ALL WORK TO BE COMPLETED IN ACCORDANCE WITH THE CONTRACT DOCUMENTS.
19. ALL WORK TO BE COMPLETED IN ACCORDANCE WITH THE CONTRACT DOCUMENTS.
20. ALL WORK TO BE COMPLETED IN ACCORDANCE WITH THE CONTRACT DOCUMENTS.
21. ALL WORK TO BE COMPLETED IN ACCORDANCE WITH THE CONTRACT DOCUMENTS.
22. ALL WORK TO BE COMPLETED IN ACCORDANCE WITH THE CONTRACT DOCUMENTS.
23. ALL WORK TO BE COMPLETED IN ACCORDANCE WITH THE CONTRACT DOCUMENTS.
24. ALL WORK TO BE COMPLETED IN ACCORDANCE WITH THE CONTRACT DOCUMENTS.
25. ALL WORK TO BE COMPLETED IN ACCORDANCE WITH THE CONTRACT DOCUMENTS.
26. ALL WORK TO BE COMPLETED IN ACCORDANCE WITH THE CONTRACT DOCUMENTS.
27. ALL WORK TO BE COMPLETED IN ACCORDANCE WITH THE CONTRACT DOCUMENTS.
28. ALL WORK TO BE COMPLETED IN ACCORDANCE WITH THE CONTRACT DOCUMENTS.
29. ALL WORK TO BE COMPLETED IN ACCORDANCE WITH THE CONTRACT DOCUMENTS.
30. ALL WORK TO BE COMPLETED IN ACCORDANCE WITH THE CONTRACT DOCUMENTS.
31. ALL WORK TO BE COMPLETED IN ACCORDANCE WITH THE CONTRACT DOCUMENTS.
32. ALL WORK TO BE COMPLETED IN ACCORDANCE WITH THE CONTRACT DOCUMENTS.
33. ALL WORK TO BE COMPLETED IN ACCORDANCE WITH THE CONTRACT DOCUMENTS.
34. ALL WORK TO BE COMPLETED IN ACCORDANCE WITH THE CONTRACT DOCUMENTS.
35. ALL WORK TO BE COMPLETED IN ACCORDANCE WITH THE CONTRACT DOCUMENTS.
36. ALL WORK TO BE COMPLETED IN ACCORDANCE WITH THE CONTRACT DOCUMENTS.
37. ALL WORK TO BE COMPLETED IN ACCORDANCE WITH THE CONTRACT DOCUMENTS.
38. ALL WORK TO BE COMPLETED IN ACCORDANCE WITH THE CONTRACT DOCUMENTS.
39. ALL WORK TO BE COMPLETED IN ACCORDANCE WITH THE CONTRACT DOCUMENTS.
40. ALL WORK TO BE COMPLETED IN ACCORDANCE WITH THE CONTRACT DOCUMENTS.
41. ALL WORK TO BE COMPLETED IN ACCORDANCE WITH THE CONTRACT DOCUMENTS.
42. ALL WORK TO BE COMPLETED IN ACCORDANCE WITH THE CONTRACT DOCUMENTS.
43. ALL WORK TO BE COMPLETED IN ACCORDANCE WITH THE CONTRACT DOCUMENTS.
44. ALL WORK TO BE COMPLETED IN ACCORDANCE WITH THE CONTRACT DOCUMENTS.
45. ALL WORK TO BE COMPLETED IN ACCORDANCE WITH THE CONTRACT DOCUMENTS.
46. ALL WORK TO BE COMPLETED IN ACCORDANCE WITH THE CONTRACT DOCUMENTS.
47. ALL WORK TO BE COMPLETED IN ACCORDANCE WITH THE CONTRACT DOCUMENTS.
48. ALL WORK TO BE COMPLETED IN ACCORDANCE WITH THE CONTRACT DOCUMENTS.
49. ALL WORK TO BE COMPLETED IN ACCORDANCE WITH THE CONTRACT DOCUMENTS.
50. ALL WORK TO BE COMPLETED IN ACCORDANCE WITH THE CONTRACT DOCUMENTS.

KEYED NOTES

1. FINISH FLOOR TO FINISH FLOOR
2. FINISH FLOOR TO FINISH FLOOR
3. FINISH FLOOR TO FINISH FLOOR
4. FINISH FLOOR TO FINISH FLOOR
5. FINISH FLOOR TO FINISH FLOOR
6. FINISH FLOOR TO FINISH FLOOR
7. FINISH FLOOR TO FINISH FLOOR
8. FINISH FLOOR TO FINISH FLOOR
9. FINISH FLOOR TO FINISH FLOOR
10. FINISH FLOOR TO FINISH FLOOR
11. FINISH FLOOR TO FINISH FLOOR
12. FINISH FLOOR TO FINISH FLOOR
13. FINISH FLOOR TO FINISH FLOOR
14. FINISH FLOOR TO FINISH FLOOR
15. FINISH FLOOR TO FINISH FLOOR
16. FINISH FLOOR TO FINISH FLOOR
17. FINISH FLOOR TO FINISH FLOOR
18. FINISH FLOOR TO FINISH FLOOR
19. FINISH FLOOR TO FINISH FLOOR
20. FINISH FLOOR TO FINISH FLOOR
21. FINISH FLOOR TO FINISH FLOOR
22. FINISH FLOOR TO FINISH FLOOR
23. FINISH FLOOR TO FINISH FLOOR
24. FINISH FLOOR TO FINISH FLOOR
25. FINISH FLOOR TO FINISH FLOOR
26. FINISH FLOOR TO FINISH FLOOR
27. FINISH FLOOR TO FINISH FLOOR
28. FINISH FLOOR TO FINISH FLOOR
29. FINISH FLOOR TO FINISH FLOOR
30. FINISH FLOOR TO FINISH FLOOR
31. FINISH FLOOR TO FINISH FLOOR
32. FINISH FLOOR TO FINISH FLOOR
33. FINISH FLOOR TO FINISH FLOOR
34. FINISH FLOOR TO FINISH FLOOR
35. FINISH FLOOR TO FINISH FLOOR
36. FINISH FLOOR TO FINISH FLOOR
37. FINISH FLOOR TO FINISH FLOOR
38. FINISH FLOOR TO FINISH FLOOR
39. FINISH FLOOR TO FINISH FLOOR
40. FINISH FLOOR TO FINISH FLOOR
41. FINISH FLOOR TO FINISH FLOOR
42. FINISH FLOOR TO FINISH FLOOR
43. FINISH FLOOR TO FINISH FLOOR
44. FINISH FLOOR TO FINISH FLOOR
45. FINISH FLOOR TO FINISH FLOOR
46. FINISH FLOOR TO FINISH FLOOR
47. FINISH FLOOR TO FINISH FLOOR
48. FINISH FLOOR TO FINISH FLOOR
49. FINISH FLOOR TO FINISH FLOOR
50. FINISH FLOOR TO FINISH FLOOR

KEYED NOTES

1. FINISH FLOOR TO FINISH FLOOR
2. FINISH FLOOR TO FINISH FLOOR
3. FINISH FLOOR TO FINISH FLOOR
4. FINISH FLOOR TO FINISH FLOOR
5. FINISH FLOOR TO FINISH FLOOR
6. FINISH FLOOR TO FINISH FLOOR
7. FINISH FLOOR TO FINISH FLOOR
8. FINISH FLOOR TO FINISH FLOOR
9. FINISH FLOOR TO FINISH FLOOR
10. FINISH FLOOR TO FINISH FLOOR
11. FINISH FLOOR TO FINISH FLOOR
12. FINISH FLOOR TO FINISH FLOOR
13. FINISH FLOOR TO FINISH FLOOR
14. FINISH FLOOR TO FINISH FLOOR
15. FINISH FLOOR TO FINISH FLOOR
16. FINISH FLOOR TO FINISH FLOOR
17. FINISH FLOOR TO FINISH FLOOR
18. FINISH FLOOR TO FINISH FLOOR
19. FINISH FLOOR TO FINISH FLOOR
20. FINISH FLOOR TO FINISH FLOOR
21. FINISH FLOOR TO FINISH FLOOR
22. FINISH FLOOR TO FINISH FLOOR
23. FINISH FLOOR TO FINISH FLOOR
24. FINISH FLOOR TO FINISH FLOOR
25. FINISH FLOOR TO FINISH FLOOR
26. FINISH FLOOR TO FINISH FLOOR
27. FINISH FLOOR TO FINISH FLOOR
28. FINISH FLOOR TO FINISH FLOOR
29. FINISH FLOOR TO FINISH FLOOR
30. FINISH FLOOR TO FINISH FLOOR
31. FINISH FLOOR TO FINISH FLOOR
32. FINISH FLOOR TO FINISH FLOOR
33. FINISH FLOOR TO FINISH FLOOR
34. FINISH FLOOR TO FINISH FLOOR
35. FINISH FLOOR TO FINISH FLOOR
36. FINISH FLOOR TO FINISH FLOOR
37. FINISH FLOOR TO FINISH FLOOR
38. FINISH FLOOR TO FINISH FLOOR
39. FINISH FLOOR TO FINISH FLOOR
40. FINISH FLOOR TO FINISH FLOOR
41. FINISH FLOOR TO FINISH FLOOR
42. FINISH FLOOR TO FINISH FLOOR
43. FINISH FLOOR TO FINISH FLOOR
44. FINISH FLOOR TO FINISH FLOOR
45. FINISH FLOOR TO FINISH FLOOR
46. FINISH FLOOR TO FINISH FLOOR
47. FINISH FLOOR TO FINISH FLOOR
48. FINISH FLOOR TO FINISH FLOOR
49. FINISH FLOOR TO FINISH FLOOR
50. FINISH FLOOR TO FINISH FLOOR



1 NEW WORK FLOOR PLAN
1/4" = 1'-0"

No.	Description	Date
1	ISSUED FOR PERMIT	10/20/20
2	ISSUED FOR PERMIT	10/20/20
3	ISSUED FOR PERMIT	10/20/20
4	ISSUED FOR PERMIT	10/20/20
5	ISSUED FOR PERMIT	10/20/20
6	ISSUED FOR PERMIT	10/20/20
7	ISSUED FOR PERMIT	10/20/20
8	ISSUED FOR PERMIT	10/20/20
9	ISSUED FOR PERMIT	10/20/20
10	ISSUED FOR PERMIT	10/20/20

KICKAPOO COFFEE ROASTERS

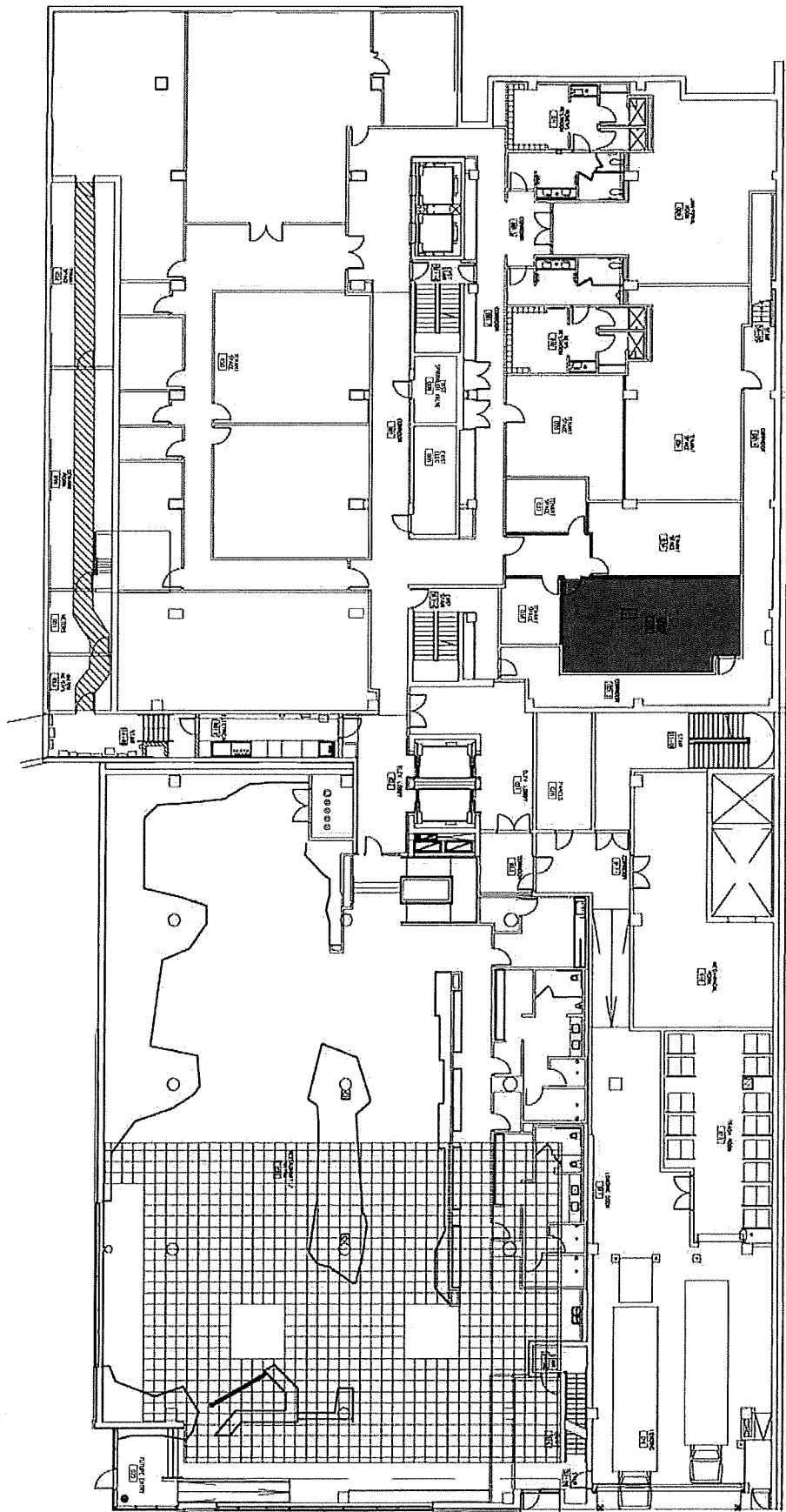
CAFE BUILD-OUT

27 West Main Street
Madison, WI 53705

FIRST FLOOR PLAN

FOR CONSTRUCTION
DATE: 10/20/20

A101



Wonderstate Sample Menu / Price List

Coffee Drinks:

Drip Coffee	2.00 / 2.45 / 2.90
Espresso	2.25 / 2.75
Americano	2.75
Cold Brew	3.25
Macchiato	3.00
Cortado	3.50
Cappuccino	3.50
Cafe au Lait	3.00 / 3.25 / 3.50
Latte	3.50 / 4.15 / 4.75
Mocha	4.25 / 4.80 / 5.35

Tea:

Iced Tea	3.00
Hot Chocolate	2.00 / 3.00 / 4.00
Tea, Loose Leaf	2.25 / 2.75 / 3.25
Chai Latte	3.50 / 4.10 / 4.70
Macha Latte	4.25 / 4.75 / 5.25
Steamer	3.00 / 4.00

Specialty Drinks:

Cold Fusion	4.75
Salted Caramel Latte	3.80 / 4.40 / 5.00
Vanilla Bean Latte	3.80 / 4.40 / 5.00
Maple Latte	4.25 / 4.80 / 5.35
Espresso Tonic	5.00

FOOD:

Scone	4.00
Blueberry Muffin	4.00
Granola Bar	3.50
Breakfast Sandwich	8.00
Driftless Bowl	9.00
Lox Bagel	10.50
Yogurt and Granola	6.00
Toasted Bagel	3.50
Market Salad	10.00
Fall Salad	10.00
BLT	9.00
Soup	5.00

Burger	11.00
Farmer Sandwich	11.00

Alcoholic Beverages:

New Glarus Spotted Cow	4.00
Driftless Brewing Co Brown Ale	4.50
Potosi IPA	4.50
La Vieille Ferme Rose	7.00
La Vieille Ferme Red	7.00
La Vieille Ferme White	7.00