



2024-2029 Transportation Improvement Program

Transportation Commission
City of Madison Engineering Division & Department of Transportation
Apr 12, 2023

CITY OF **MADISON**



Outline

- TIP Scoring Tool
- Programs
 - Reconstructions
 - Pavement Management
 - Sidewalk
 - Bikeways
 - Bridge Repair
- Stand Alone Major Projects
 - Surface Transportation Block Grant (STBG)
 - Transportation Alternatives Program (TAP)
 - Others
- State of Streets



TIP

RECONSTRUCTS
Pavements & Utilities with
Critical Needs

Eligible Segment Screening

- Pavements ≤ 4
- Water med. or high risk
- Sanitary ≤ 3
- Proposed Storm
- Platted Roads
- HIN segments
- City-maintained Roads

GIS

Assign Raw Score

- Pavement (0-30)
- Sanitary (0-10)
- Water (0-10)
- Storm (0-10)
- Ped (0-8)
- Bike (0-6)
- Transit (0-6)
- Unique Factors (0-20)

GIS

Weight Segments

- + 5% raw score if on HIN
- + 15% raw score if in equity area

GIS

Scope & Budget

- Assemble into logical groupings
- Eliminated non-reconstructs
- Prioritize Groupings
- Recommend for budget

Discretion

SAFE STREETS

NON-RECONSTRUCTS
Pavements without
critical needs

Identify Needs

- Candidate projects identified through community input, NRTs, staff observations

Evaluate Projects

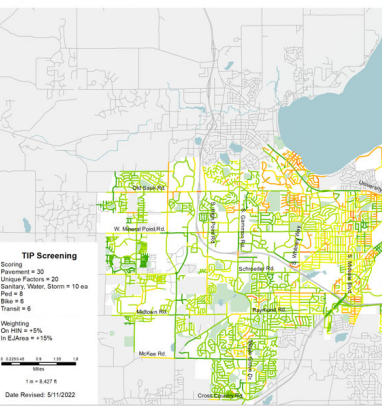
- Evaluate candidate projects using safety, equity, ability to fill gaps, cost as metrics
- Prioritize

TC Approval

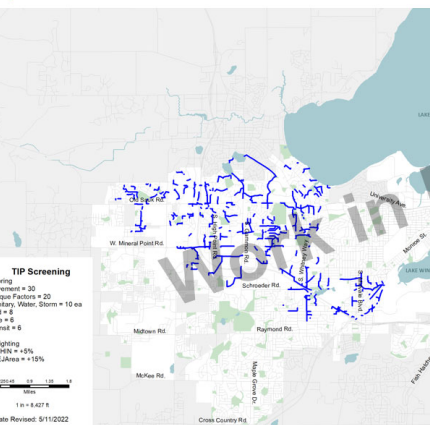
- Review evaluation
- Modify prioritization as appropriate
- Approve

TIP Scoring Tool

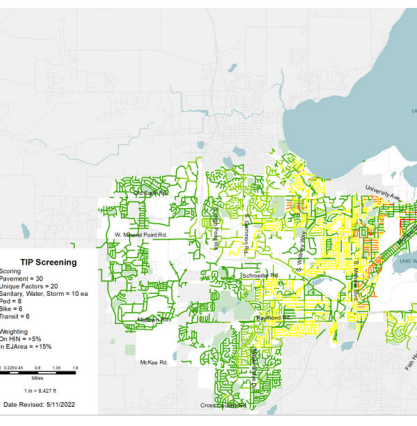
Assign Raw Score
Pavement Condition
Up to 30 Points



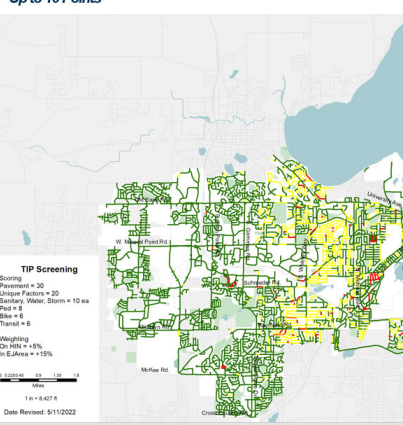
Assign Raw Score
Proposed Storm Pipes
Up to 10 Points



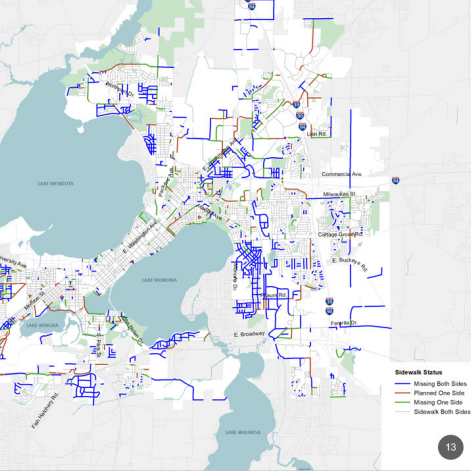
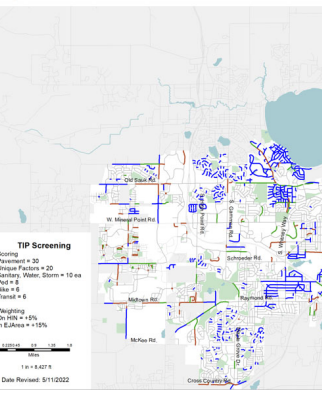
Assign Raw Score
Sanitary Main Ratings
Up to 10 Points



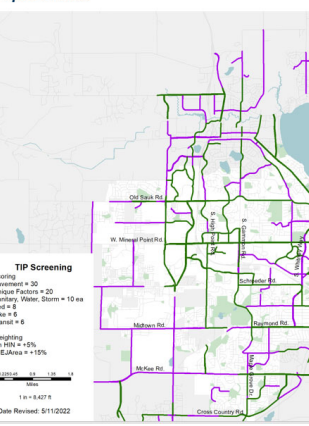
Assign Raw Score
Water Pipe Core Risk
Up to 10 Points



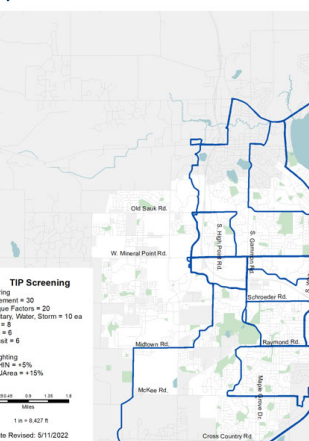
Assign Raw Score
Pedestrian Needs
Up to 8 Points



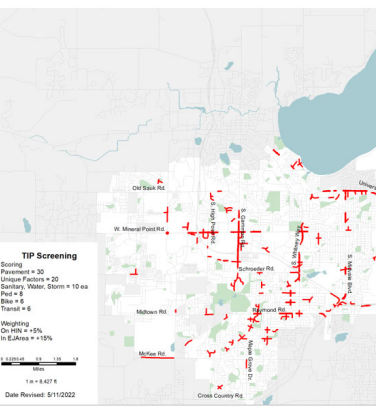
Assign Raw Score
Bicycle Network
Up to 6 Points



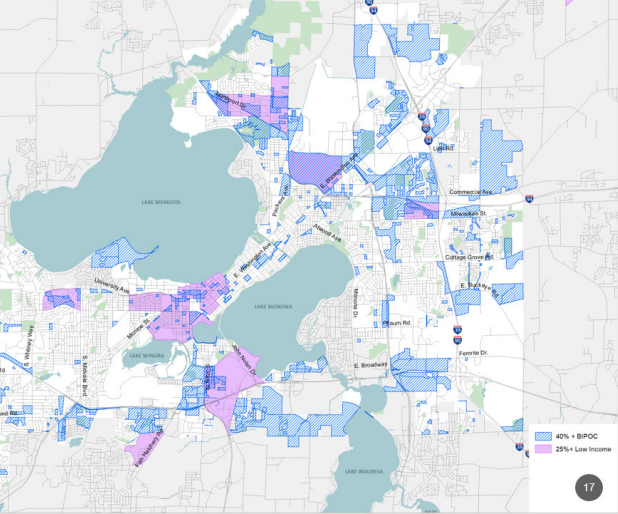
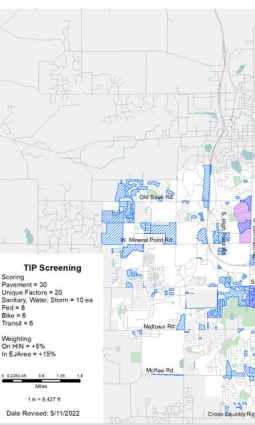
Assign Raw Score
Transit Network
Up to 6 Points



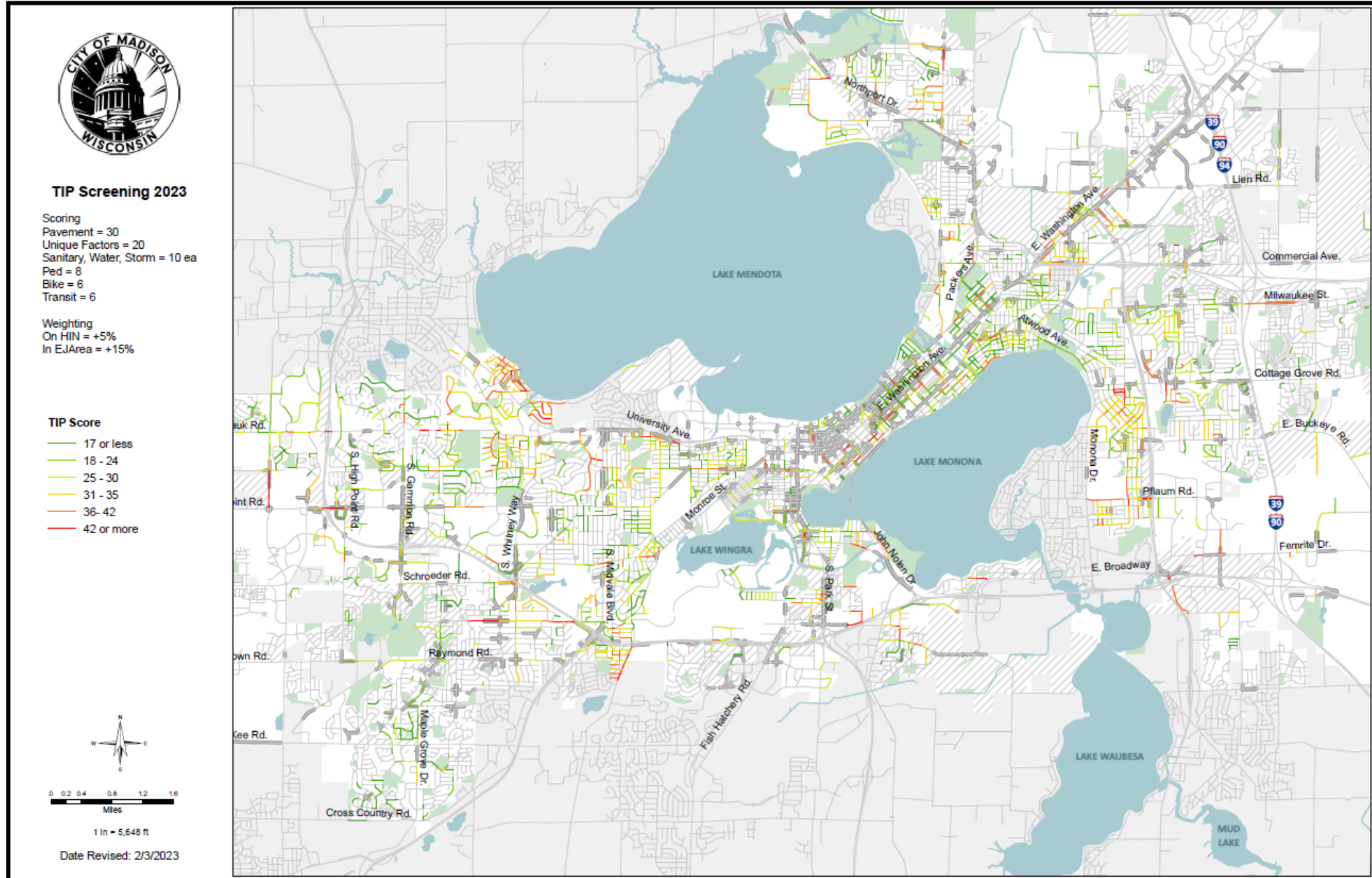
Weight Segments
High Injury Network
Raw Score x 5%



Weight Segments
Equity Areas
Raw Score x 15%



TIP Scoring Tool



Reconstruction Streets Program 2024

- Reconstruct 2.9 Miles
- Evergreen, Center, Willard, Ohio – 35
- Lowell – 35
- Doncaster, Beverly, Danbury – 42
- Rutledge – 35
- Knutson – 50
- Hermina, Union – 24
- Lake Mendota Dr – 42
- Atticus Way – New Street



CITY OF **MADISON**



Resurfacing Program 2024

- Chip Seal 50-70 mi
- Crack Seal 50-100 mi
- Patching
- Resurfacing 5.0 mi
- Franklin, Stevens – 42
- W Washington – 48
- Mineral Point – 35
- Maple Grove – 30
- Starker – 48
- Green – 42
- Hancock – 35



Bikeways Program

- Resurfacing paths rated at 5 or lower (paths rated this spring)
 - Warner Park
 - Elver Park
 - Marlborough Park
 - Quann Park
 - Sherry Park
 - Struck Canyon Underpass
 - Sycamore Park
 - Walnut Grove Park
 - Wingra Creek



Sidewalk Program

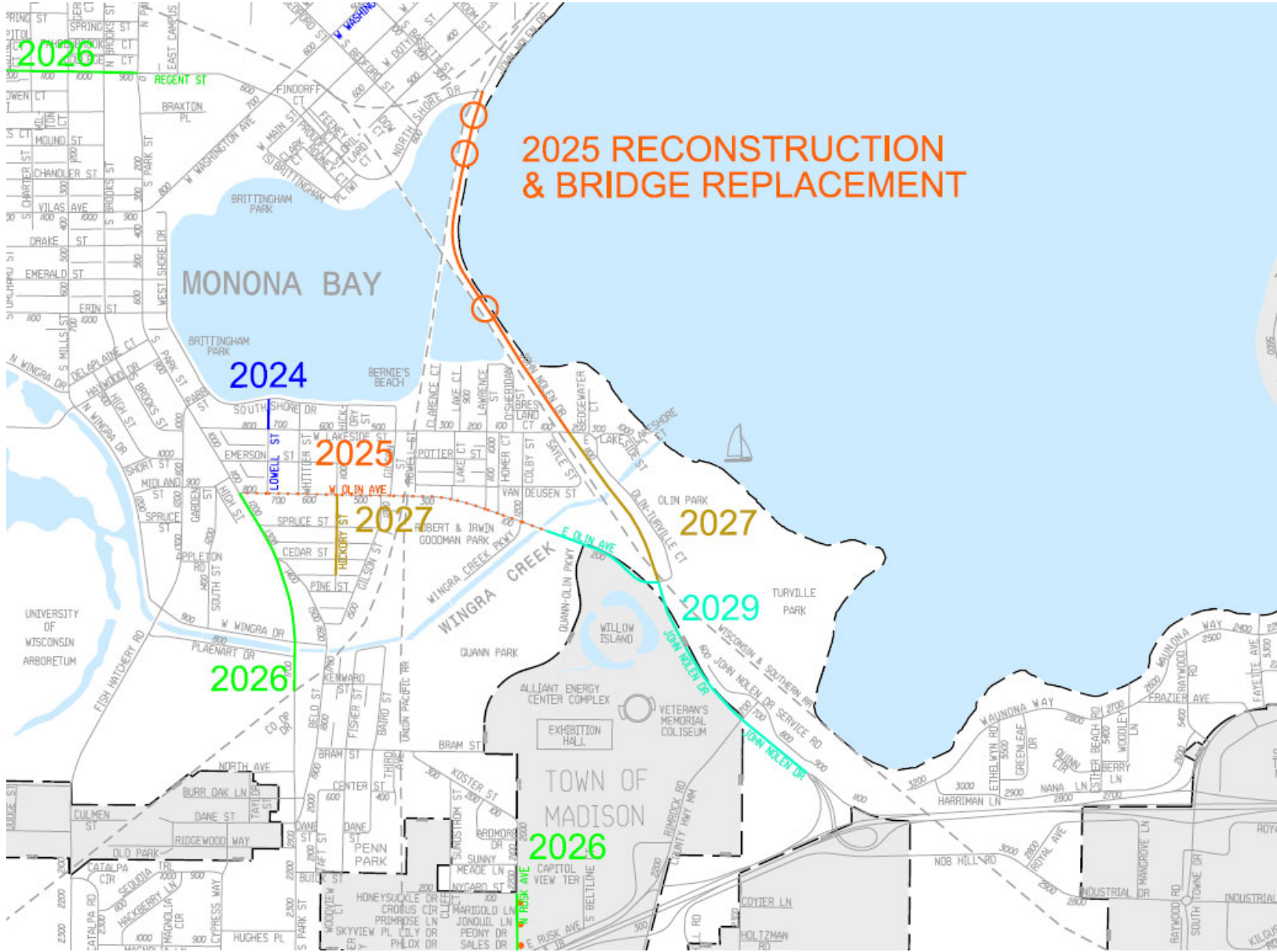
- Ordered Sidewalks
 - 2023 District 12 – Amani Latimer Burris
 District 18 – Charles Myadze
 - 2024 District 11 – Bill Tishler
 District 19 – Kristen Slack
 - 2025 District 10 – Yannette Figueroa Cole
 District 20 – Barbara McKinney
- High Priority Sidewalks

Bridge Repair Program

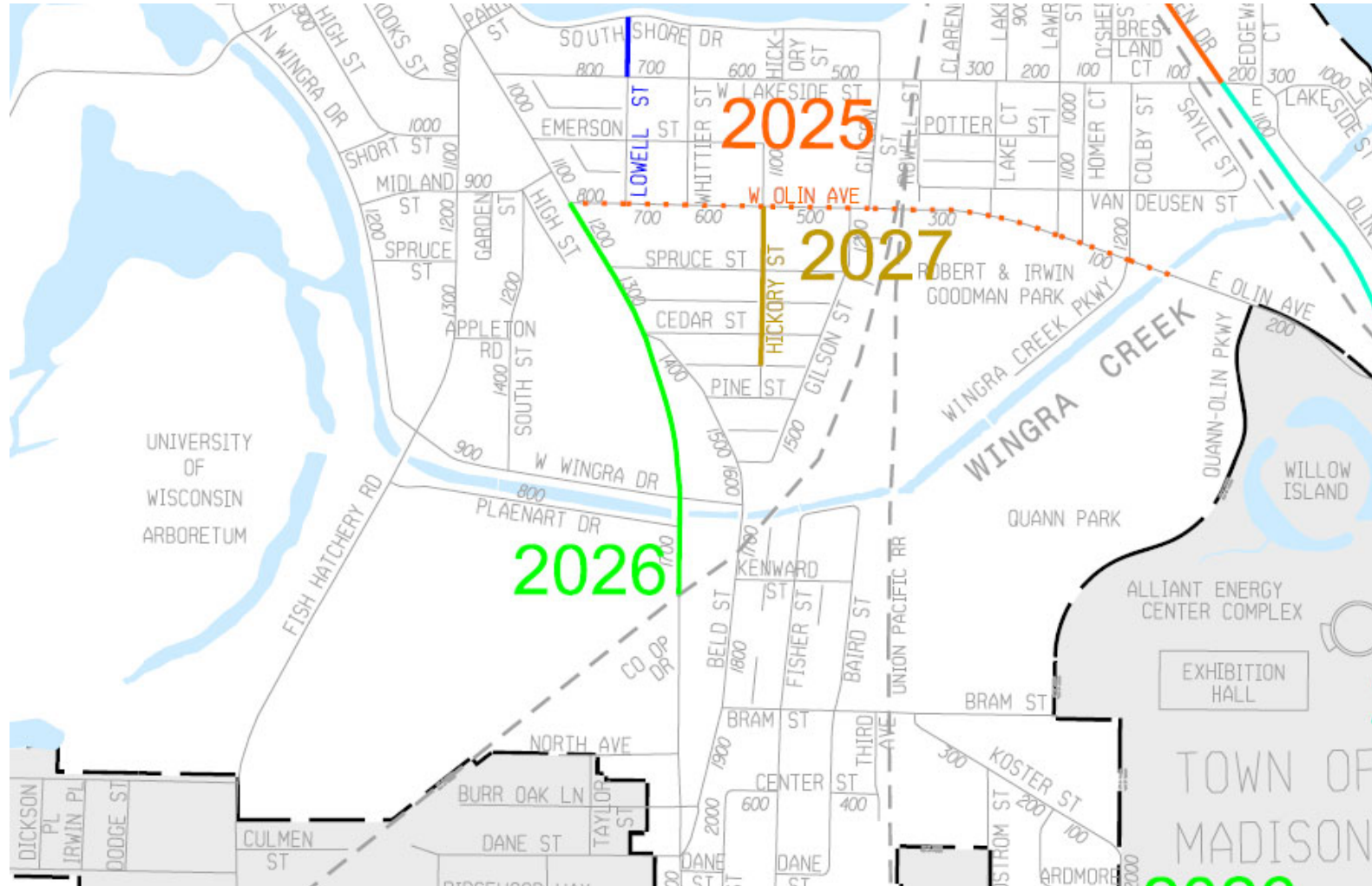
- 2023 – John Nolen Drive Repairs
Ashman Bridge Painting
- 2024 – Epoxy Coating of Bridge Decks - Beld St, Milwaukee St
Knutson Bridge Painting
Pedestrian Bridge Repairs over Park St
Pedestrian Bridge Repairs over Stoughton Road



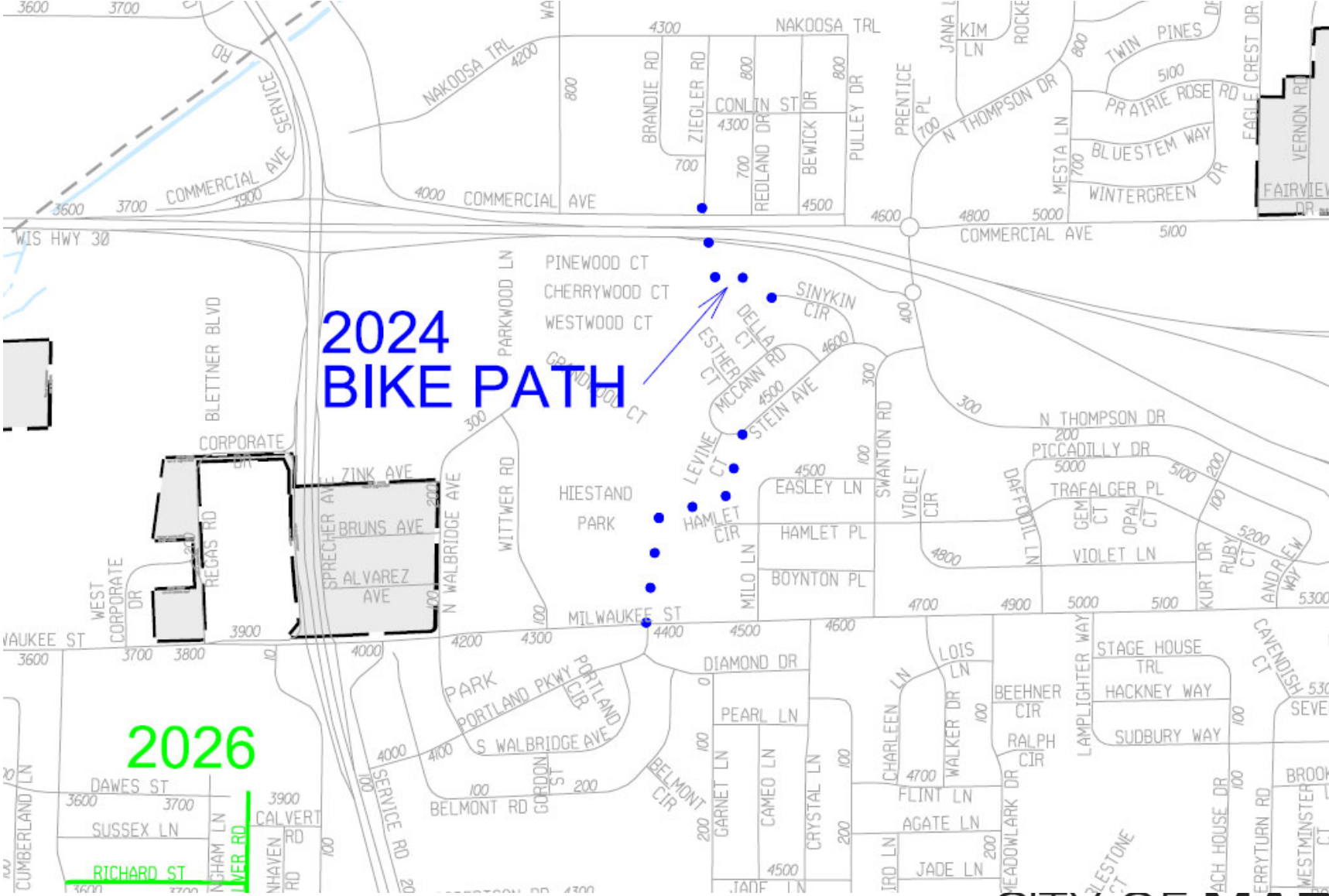
John Nolen Dr



Park St



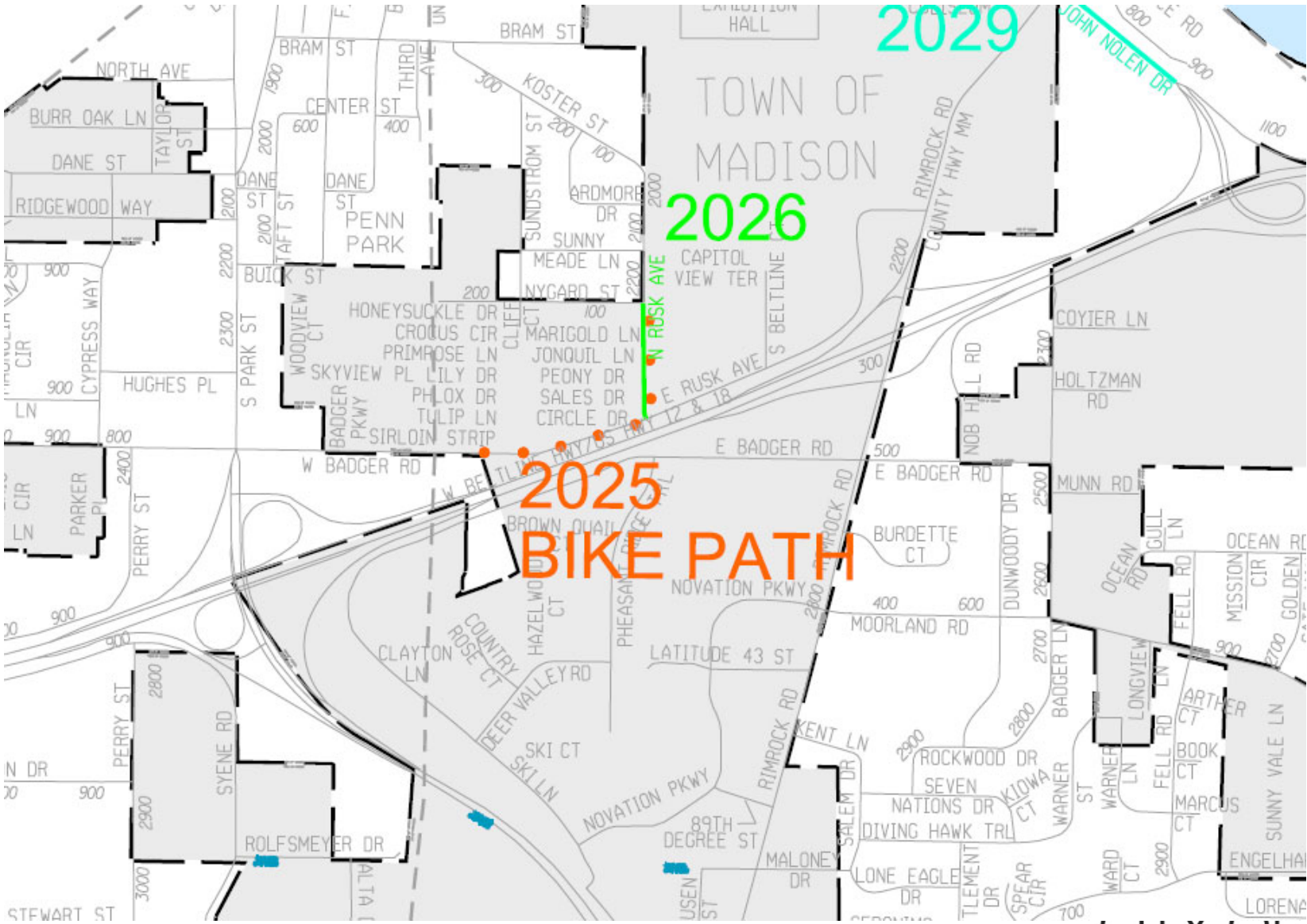
Autumn Ridge Path



CITY OF MADISON



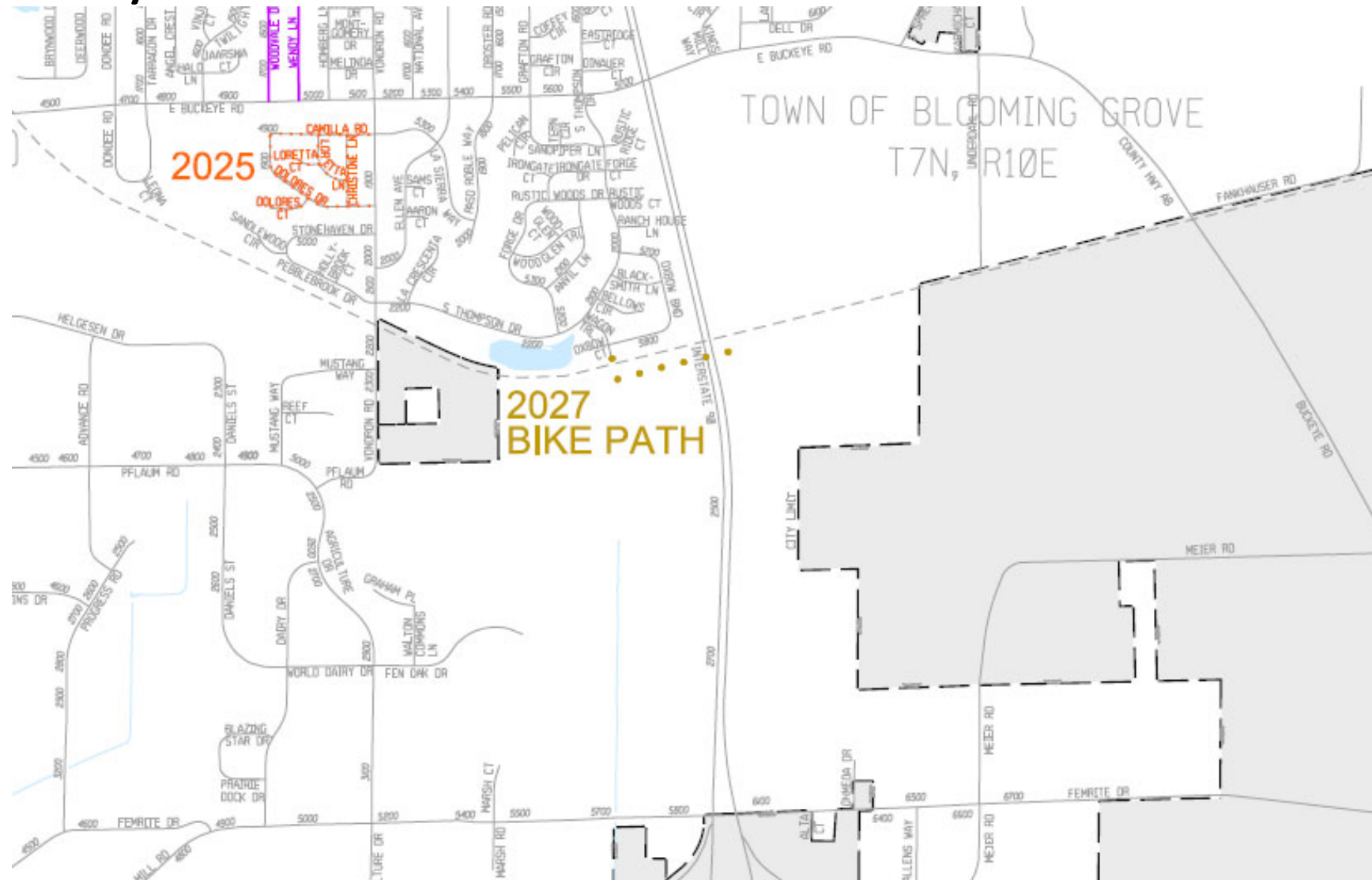
Badger Rusk Path



CITY OF MADISON



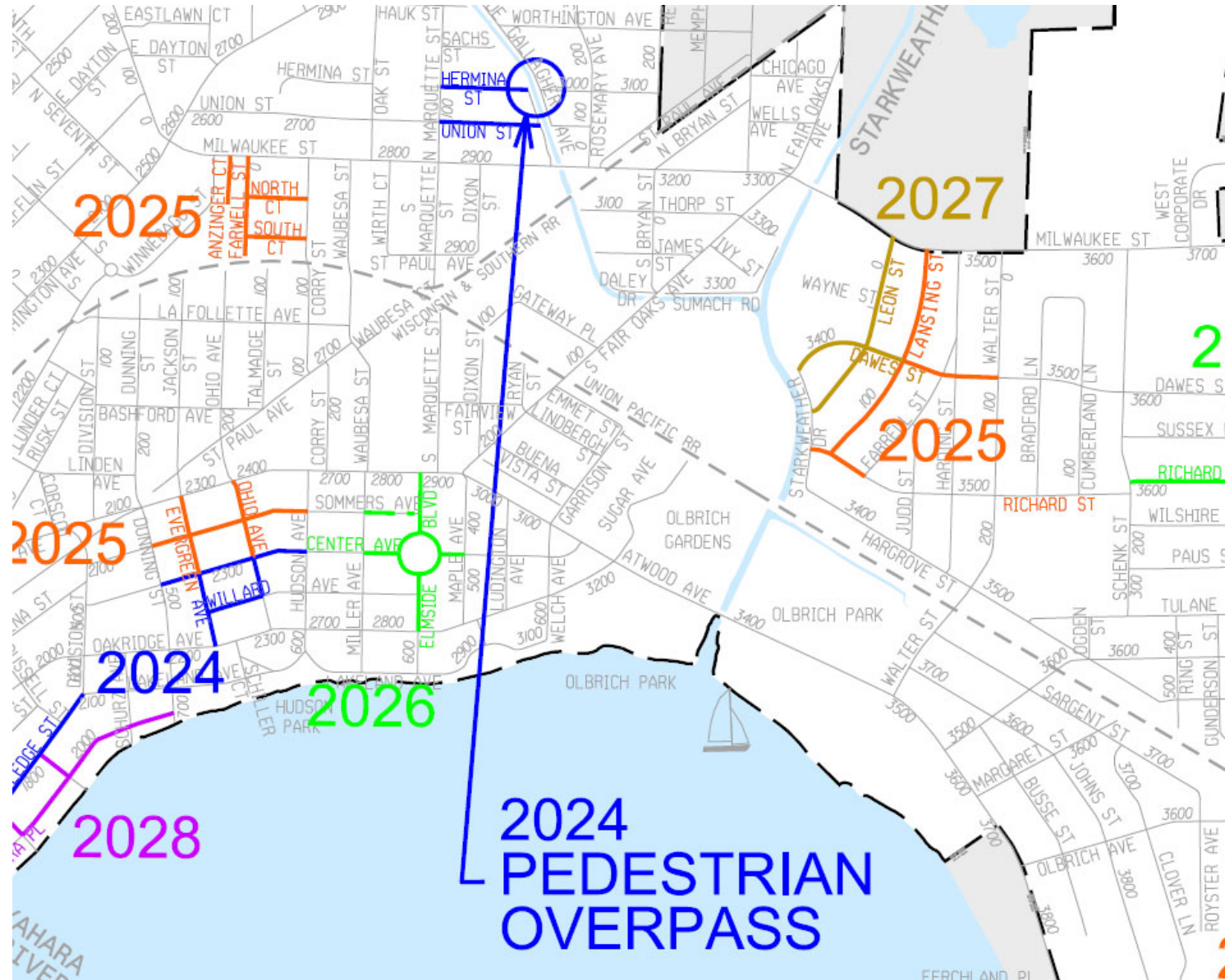
Capital City Path



CITY OF **MADISON**



Hermina Street Ped/Bike Bridge



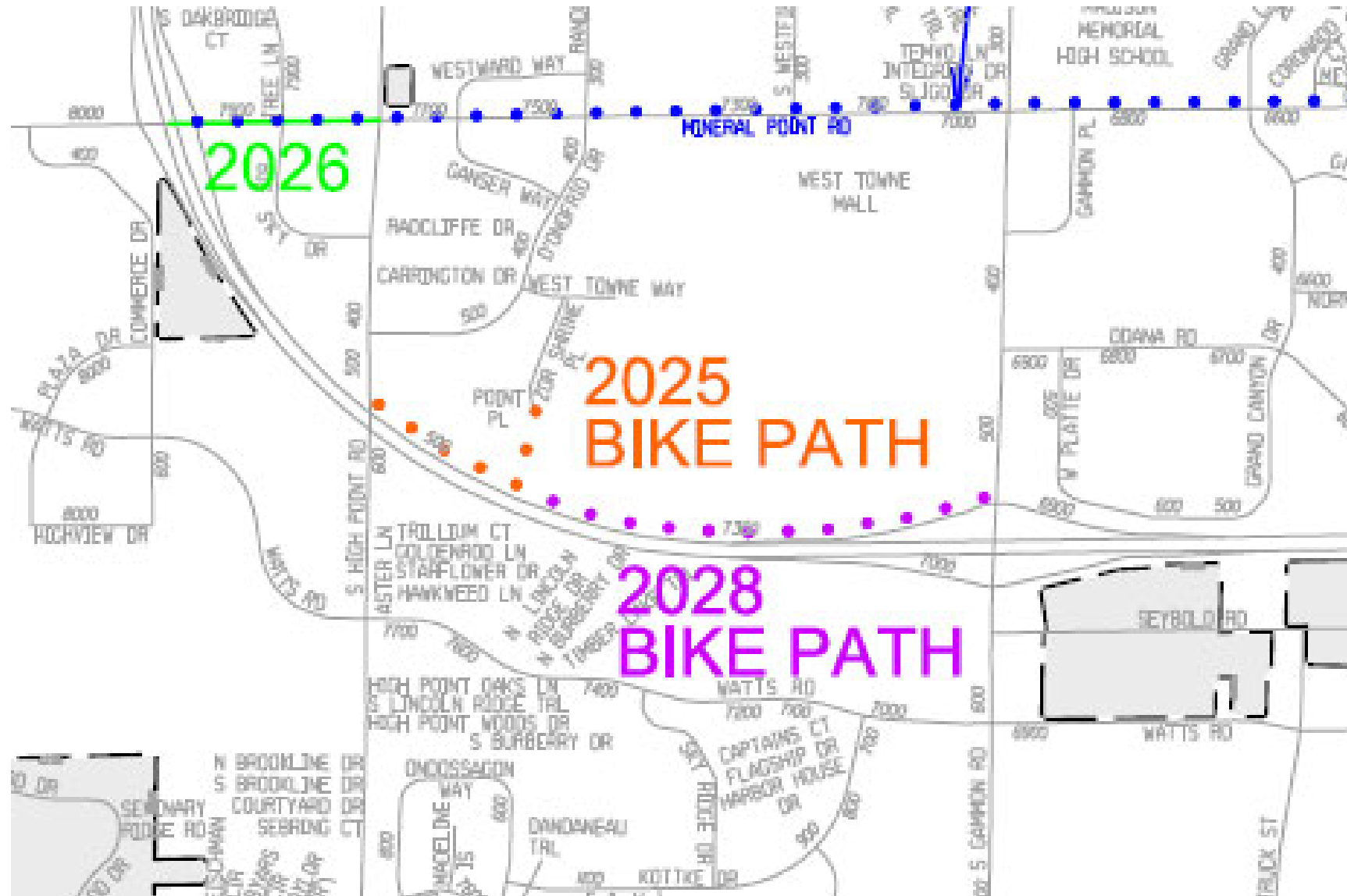
Troy Drive Railroad Bridge



024



West Towne Path Phase 2



State of our Local Streets

	Local	2001	2010	2015	2017	2018	2019	2020	2021	2022
	% Miles at or below Cond State 10	100.0%	100.0%	100.0%	100.0%	100.0%	100.0%	100.0%	100.0%	100.0%
	% Miles at or below Cond State 9	93.9%	98.6%	98.1%	96.6%	94.6%	96.1%	97.4%	95.7%	94.8%
	% Miles at or below Cond State 8	88.3%	92.6%	94.9%	94.3%	92.2%	92.9%	93.4%	91.8%	91.3%
	% Miles at or below Cond State 7	68.2%	56.0%	64.1%	61.8%	53.2%	78.5%	62.9%	46.3%	42.6%
	% Miles at or below Cond State 6	61.8%	40.7%	41.8%	45.9%	44.3%	44.3%	41.1%	35.0%	30.6%
Goal 30%	% Miles at or below Cond State 5	34.9%	28.5%	27.6%	27.8%	25.9%	25.7%	23.5%	19.6%	18.7%
	% Miles at or below Cond State 4	11.6%	6.7%	17.5%	18.2%	16.2%	15.4%	14.3%	11.8%	11.4%
	% Miles at or below Cond State 3	2.4%	0.6%	2.7%	3.5%	3.1%	2.9%	2.6%	2.2%	1.6%
	% Miles at or below Cond State 2	0.9%	0.0%	0.1%	0.2%	0.2%	0.1%	0.3%	0.3%	0.0%
	% Miles at or below Cond State 1	0.8%	0.0%	0.0%	0.0%	0.0%	0.0%	0.0%	0.2%	0.0%
	% Miles at or below Cond State 0	0.4%	0.0%	0.0%	0.0%	0.0%	0.0%	0.0%	0.2%	0.0%

- Goal: Less than 30% of total miles of local streets at or below 5



State of our Collector Streets

	Collector	2001	2010	2015	2017	2018	2019	2020	2021	2022
	% Miles at or below Cond State 10	100.0%	100.0%	100.0%	100.0%	100.0%	100.0%	100.0%	100.0%	100.0%
	% Miles at or below Cond State 9	94.2%	96.9%	96.4%	96.7%	95.1%	96.1%	97.0%	96.5%	95.8%
	% Miles at or below Cond State 8	86.1%	89.0%	90.8%	93.0%	91.5%	92.8%	95.0%	94.5%	94.3%
	% Miles at or below Cond State 7	58.3%	48.5%	58.8%	61.5%	53.1%	78.0%	64.4%	47.9%	48.6%
	% Miles at or below Cond State 6	48.6%	32.4%	39.0%	44.3%	43.1%	46.5%	43.9%	37.0%	32.2%
Goal 20%	% Miles at or below Cond State 5	27.8%	19.3%	18.9%	23.1%	21.3%	25.0%	22.6%	20.7%	16.9%
	% Miles at or below Cond State 4	6.0%	4.7%	9.1%	10.2%	9.5%	8.4%	8.1%	8.0%	8.1%
	% Miles at or below Cond State 3	0.3%	0.8%	2.9%	3.2%	3.0%	1.8%	1.6%	1.8%	1.4%
	% Miles at or below Cond State 2	0.0%	0.0%	0.0%	0.0%	0.2%	0.2%	0.0%	0.3%	0.0%
	% Miles at or below Cond State 1	0.0%	0.0%	0.0%	0.0%	0.2%	0.2%	0.0%	0.3%	0.0%
	% Miles at or below Cond State 0	0.0%	0.0%	0.0%	0.0%	0.2%	0.2%	0.0%	0.3%	0.0%

- Goal: Less than 20% of total miles of local streets at or below 5

State of our Arterial Streets

	Arterial	2001	2010	2015	2017	2018	2019	2020	2021	2022
	% Miles at or below Cond State 10	100.0%	100.0%	100.0%	100.0%	100.0%	100.0%	100.0%	100.0%	100.0%
	% Miles at or below Cond State 9	98.3%	92.0%	98.0%	97.8%	95.1%	95.1%	97.4%	93.8%	93.0%
	% Miles at or below Cond State 8	87.0%	76.6%	89.8%	93.6%	90.7%	92.9%	91.8%	88.2%	88.0%
	% Miles at or below Cond State 7	58.4%	47.0%	56.4%	53.8%	42.5%	78.9%	57.9%	45.2%	51.1%
	% Miles at or below Cond State 6	46.3%	28.2%	37.8%	37.8%	36.5%	40.6%	39.9%	33.9%	32.1%
Goal 15%	% Miles at or below Cond State 5	23.3%	15.8%	18.4%	26.3%	24.6%	25.6%	25.8%	21.2%	21.1%
	% Miles at or below Cond State 4	2.0%	8.1%	7.1%	8.8%	6.9%	8.6%	8.2%	6.0%	6.5%
	% Miles at or below Cond State 3	0.5%	0.8%	2.4%	2.5%	1.6%	1.1%	1.2%	0.6%	0.3%
	% Miles at or below Cond State 2	0.5%	0.0%	0.0%	0.0%	0.0%	0.0%	0.1%	0.0%	0.0%
	% Miles at or below Cond State 1	0.5%	0.0%	0.0%	0.0%	0.0%	0.0%	0.0%	0.0%	0.0%
	% Miles at or below Cond State 0	0.5%	0.0%	0.0%	0.0%	0.0%	0.0%	0.0%	0.0%	0.0%

- Goal: Less than 15% of total miles of local streets at or below 5

State of our Paths

All Paths	2016	2017	2018	2019	2020	2021	2022
% Miles at or below Cond State 10	100.0%	100.0%	100.0%	100.0%	100.0%	100.0%	100.0%
% Miles at or below Cond State 9	90.9%	89.0%	94.7%	91.9%	90.4%	94.1%	84.9%
% Miles at or below Cond State 8	68.3%	67.5%	76.4%	73.9%	70.6%	74.9%	66.8%
% Miles at or below Cond State 7	45.1%	44.7%	57.6%	55.5%	53.3%	56.0%	49.6%
% Miles at or below Cond State 6	19.0%	18.4%	25.7%	24.0%	18.9%	22.3%	18.6%
% Miles at or below Cond State 5	4.3%	4.3%	11.1%	10.0%	6.8%	7.4%	5.8%
% Miles at or below Cond State 4	1.1%	1.1%	1.5%	1.5%	0.6%	1.2%	1.2%
% Miles at or below Cond State 3	0.3%	0.3%	0.0%	0.1%	0.0%	0.0%	0.1%
% Miles at or below Cond State 2	0.3%	0.3%	0.0%	0.1%	0.0%	0.0%	0.1%
% Miles at or below Cond State 1	0.3%	0.3%	0.0%	0.1%	0.0%	0.0%	0.1%
% Miles at or below Cond State 0	0.3%	0.3%	0.0%	0.1%	0.0%	0.0%	0.1%

- Goal: 0% of total miles of paths at or below 5



Contact Information & Resources

- Engineering
 - City Engineer, Jim Wolfe, 608-266-4099, jwolfe@cityofmadison.com
 - Assistant City Engineer, Chris Petykowski, 608-267-8678, cpetykowski@cityofmadison.com
- Project Website: cityofmadison.com/engineering/projects/
 - Sign-up for project email updates on the website
 - Updates on closures & work progress will be posted to the project website
 - Recording of Public Information Meetings will be posted on the project website
- Facebook – City of Madison Engineering
- Twitter – @MadisonEngr
- Podcast: Search Everyday Engineering on Apple iTunes, GooglePlay or your podcast provider

