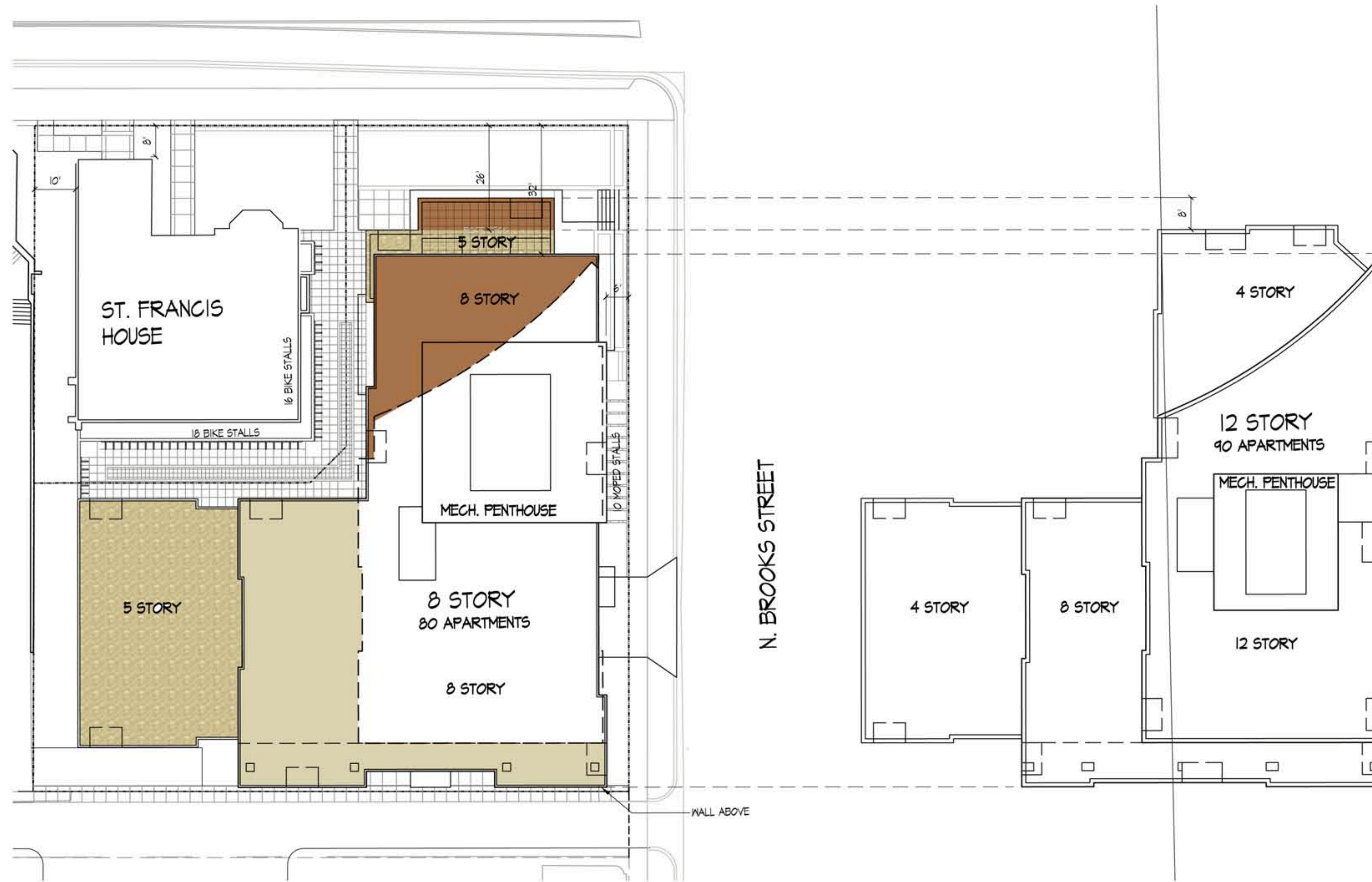
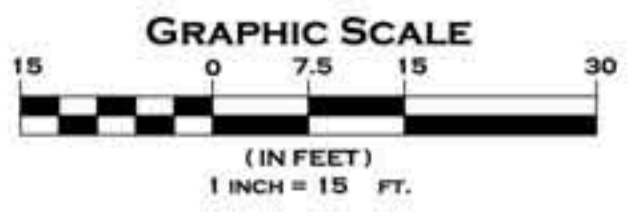




1001 University Development
8 Story Proposal
Existing Conditions

Consultant

Notes



A MASSING: 8 STORY VS 12 STORY
1/15/07

Revisions

UDC - SEPT. 7, 2011

Project Title

1001 University Avenue
Madison, WI

Drawing Title
Massing

Project No.

1037

Drawing No.

C-1.0

This document contains confidential or proprietary information of Knothe & Bruce Architects. Neither the document nor the information herein is to be reproduced, distributed, used, or otherwise relied upon in whole or in part, except as specifically authorized by Knothe & Bruce Architects. Knothe & Bruce Architects is a Limited Liability Company of Wisconsin.



University Ave. Street Elevation- 8 Story Proposal



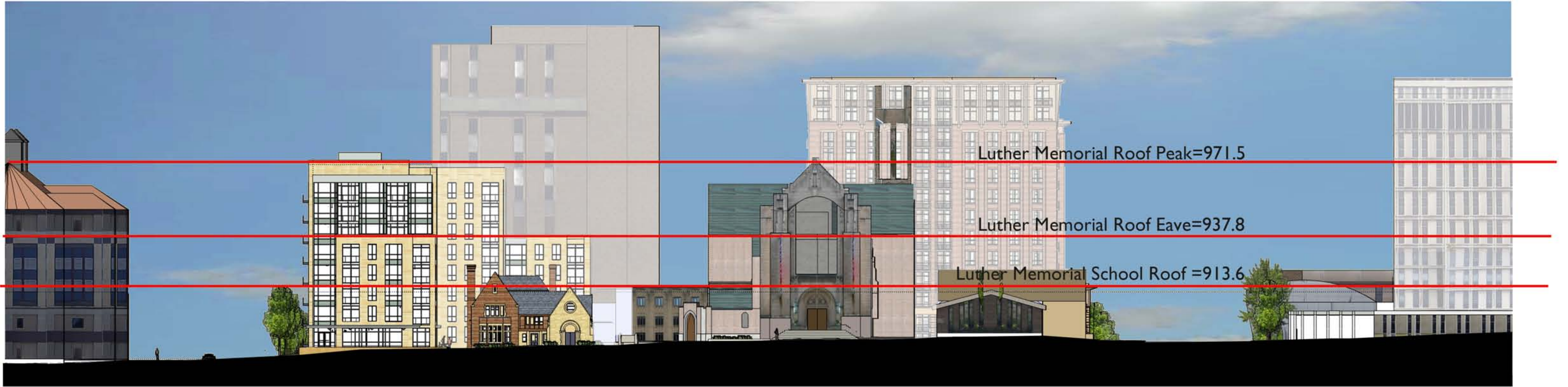
University Ave Street Elevation-Previous Proposal

1001 University Development
Street Elevations-8 Story Proposal

August 22, 2011

**KNOTHE
& BRUCE**
architects

Project # 1037



1001 University Development
Street Elevations-8 Story Proposal

August 22, 2011

**KNOTHE
& BRUCE**
architects

Project # 1037



Luther Memorial Eave=971.5

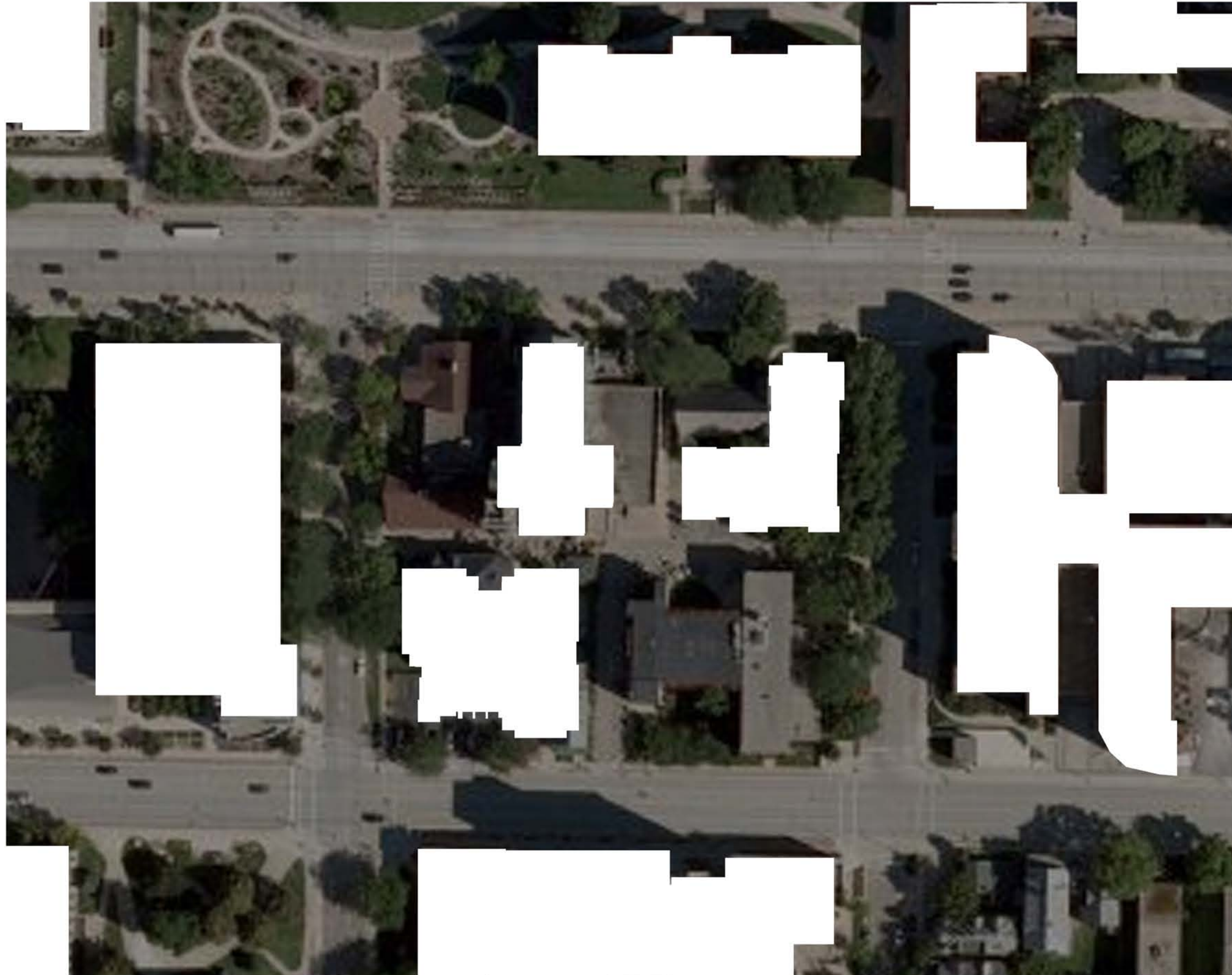
Brooks Street Elevation- 8 Story Proposal

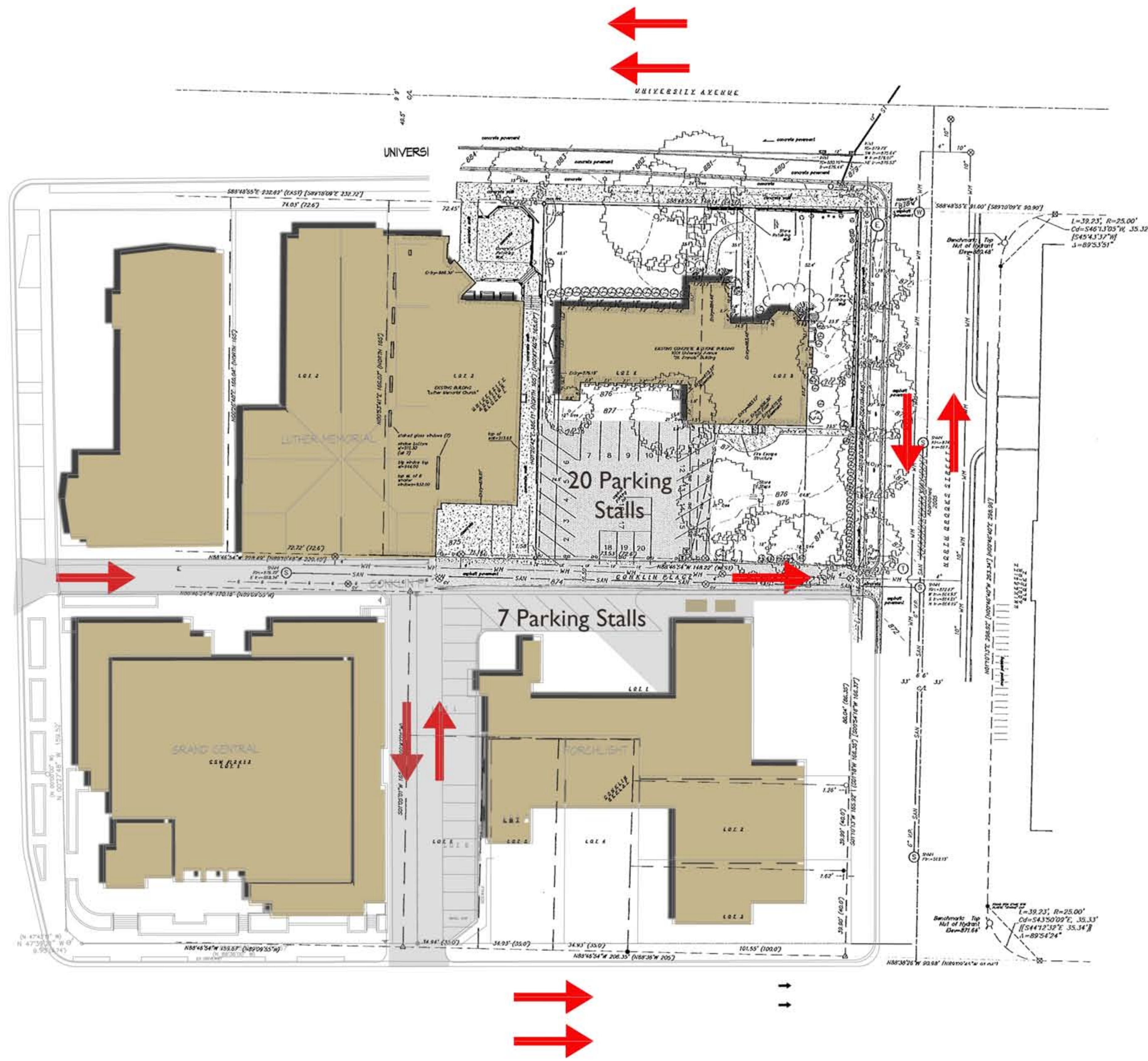
1001 University Development
Street Elevations-8 Story Proposal

August 22, 2011

**KNOTHE
& BRUCE**
architects

Project # 1037

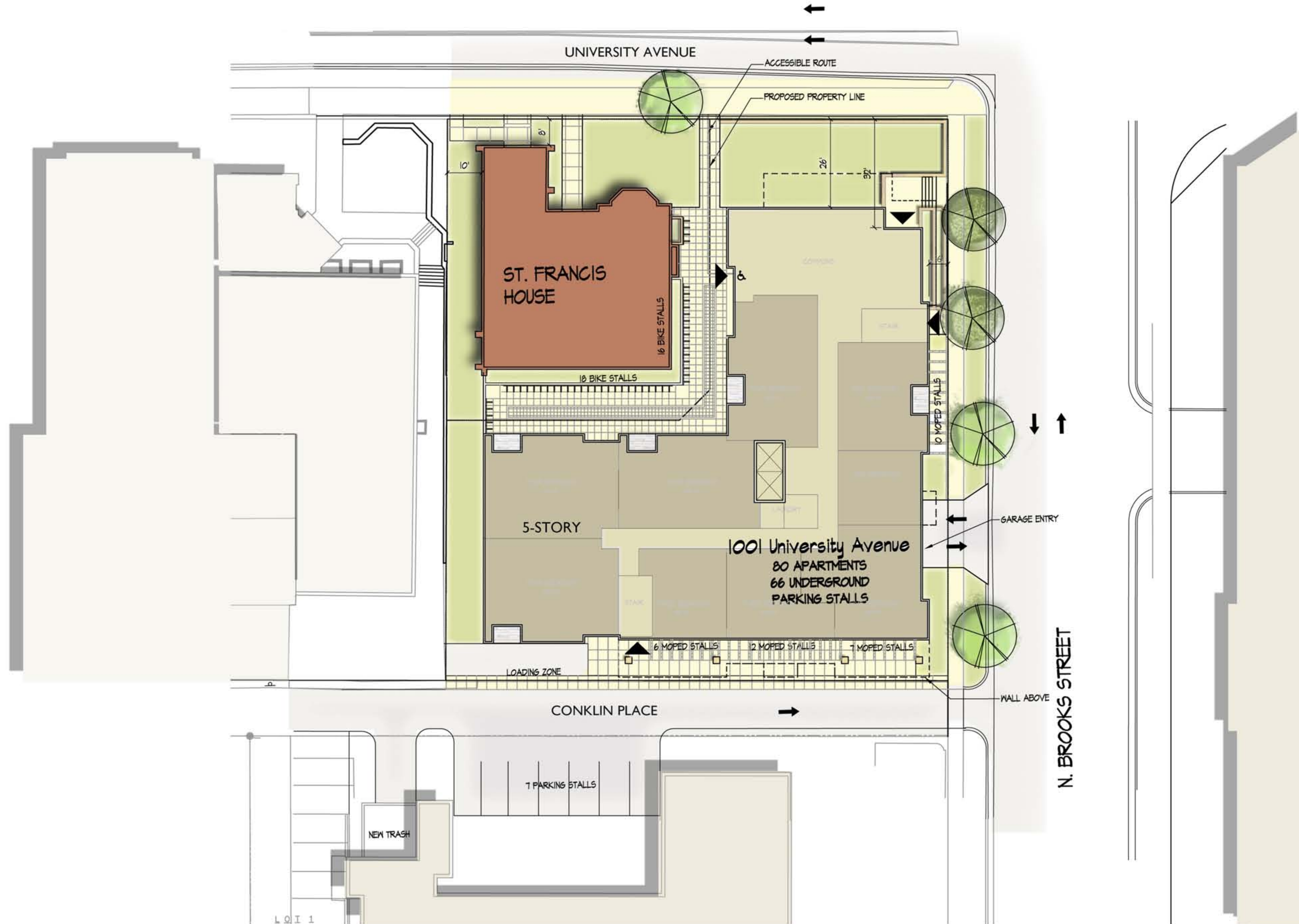




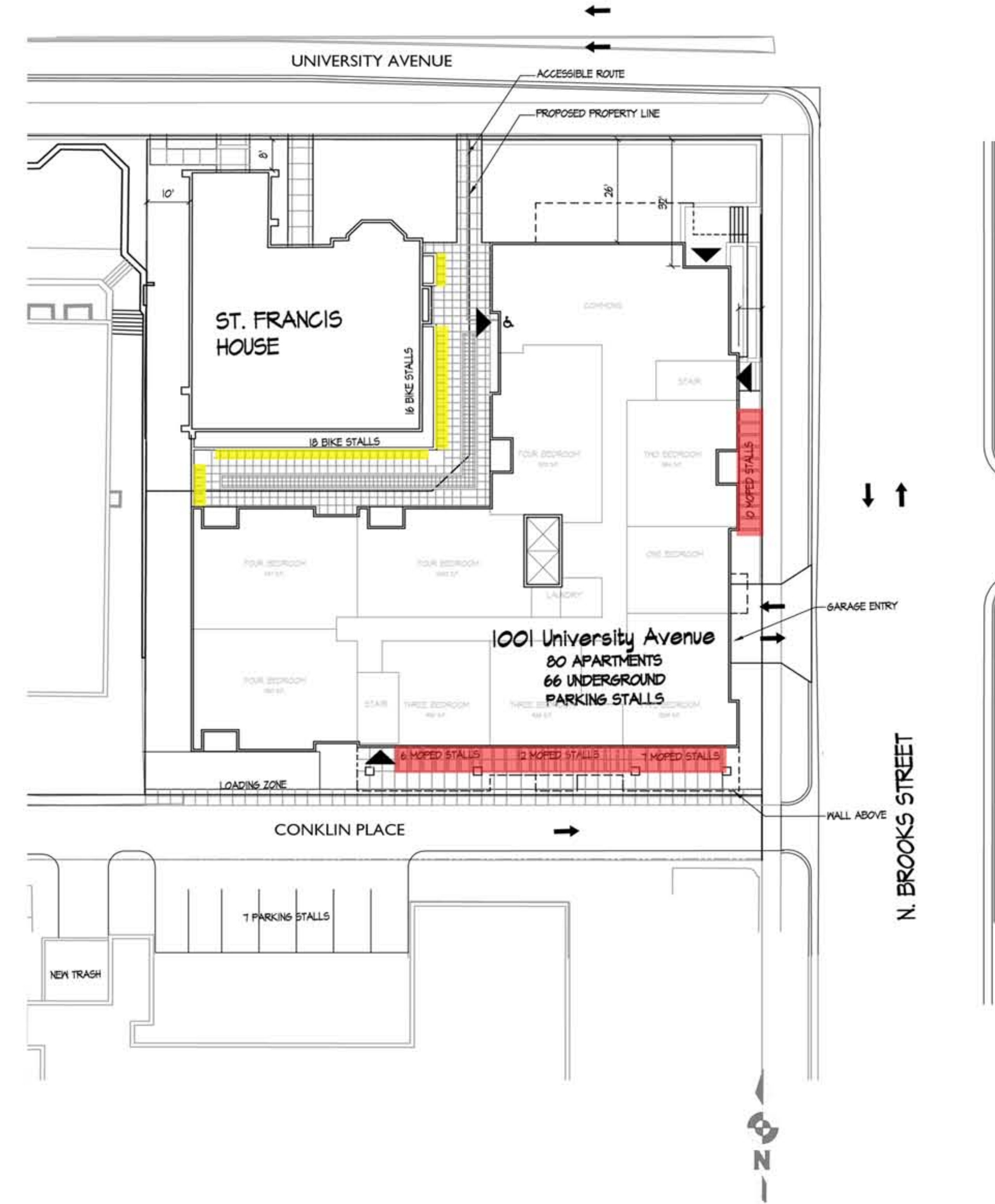
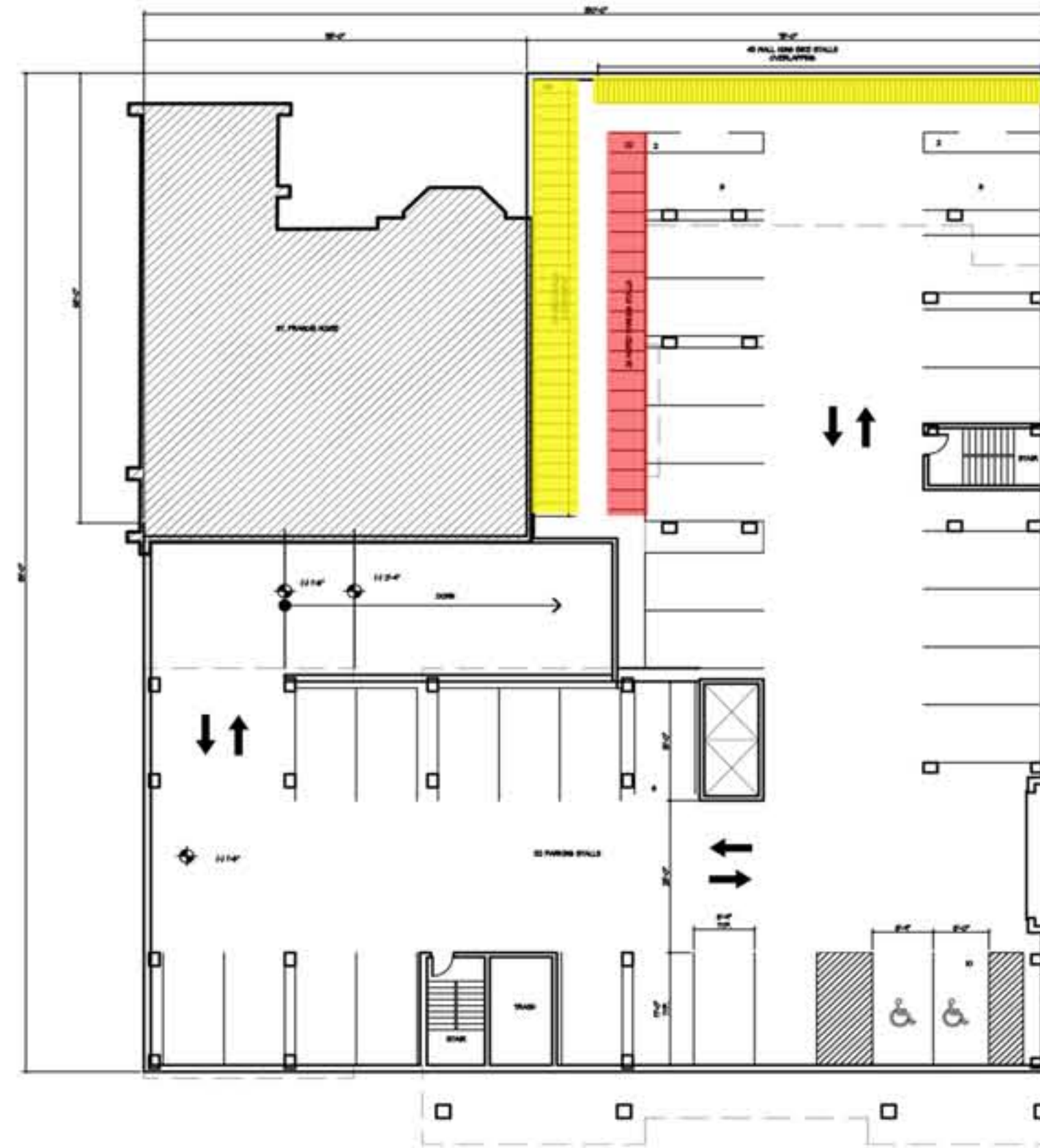
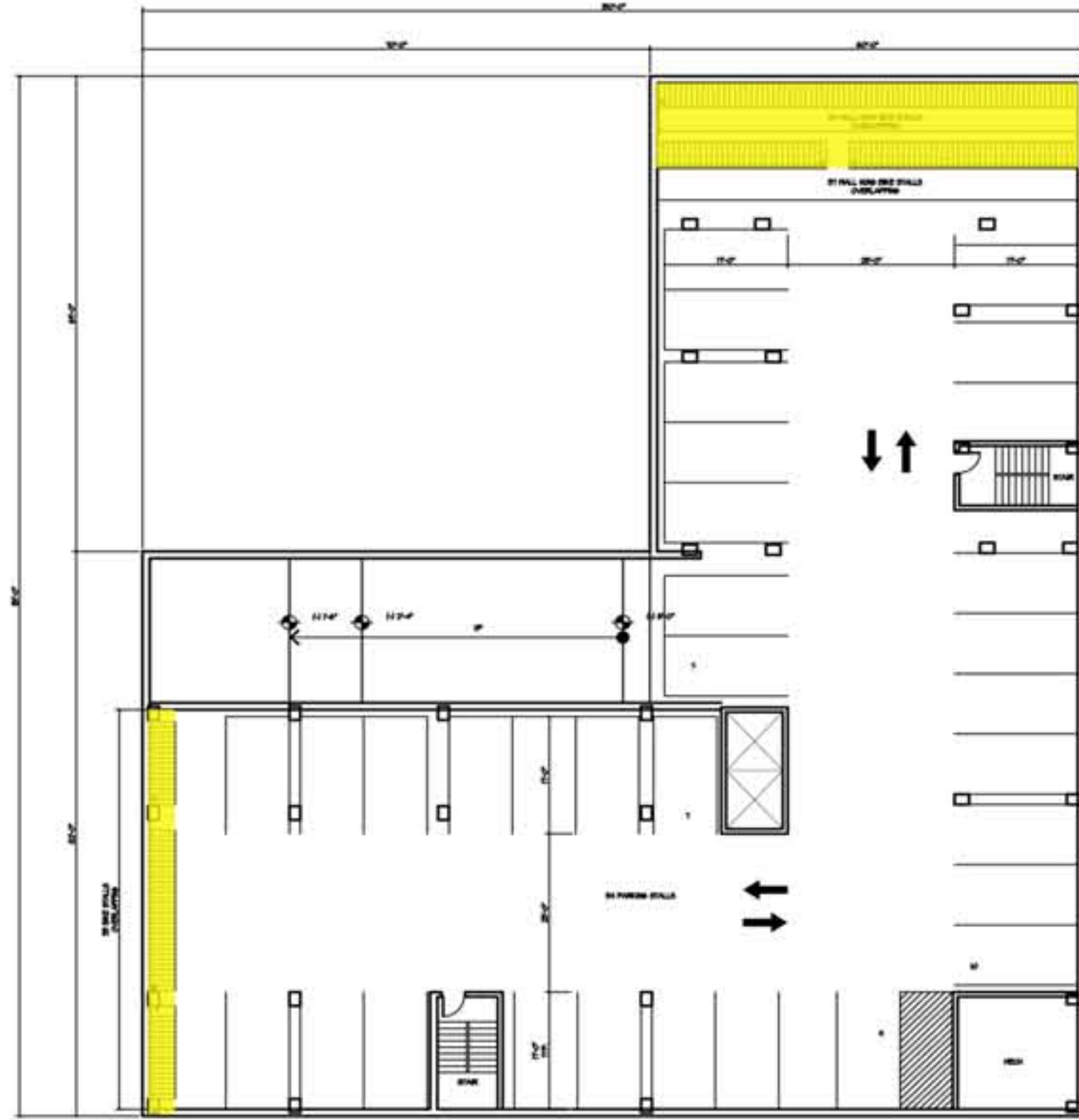
St. Francis Development
Existing Conditions

Project Summary

- 80 Units
- 246 Bedrooms
- 66 Underground Parking Stalls
- 219 Bike Parking Stalls
- 61 Moped Stalls



1001 University Development
8 Story Proposal
Site Plan



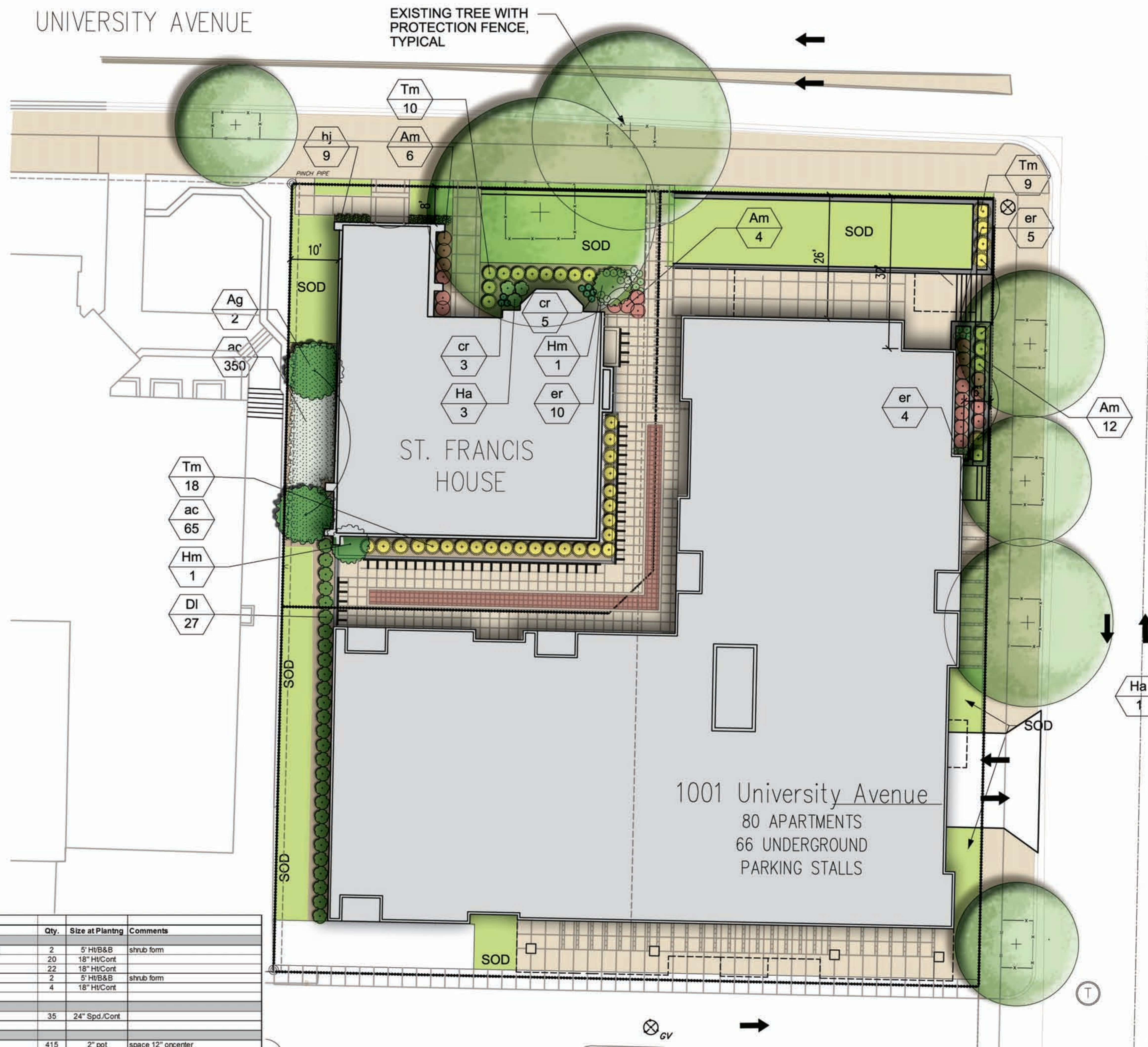
Project Summary

- 80 Units
- 246 Bedrooms
- 66 Underground Parking Stalls
- 219 Bike Parking Stalls
- 61 Moped Stalls

1001 University Development
8 Story Proposal
Bike and Moped Parking

UNIVERSITY AVENUE

EXISTING TREE WITH PROTECTION FENCE, TYPICAL

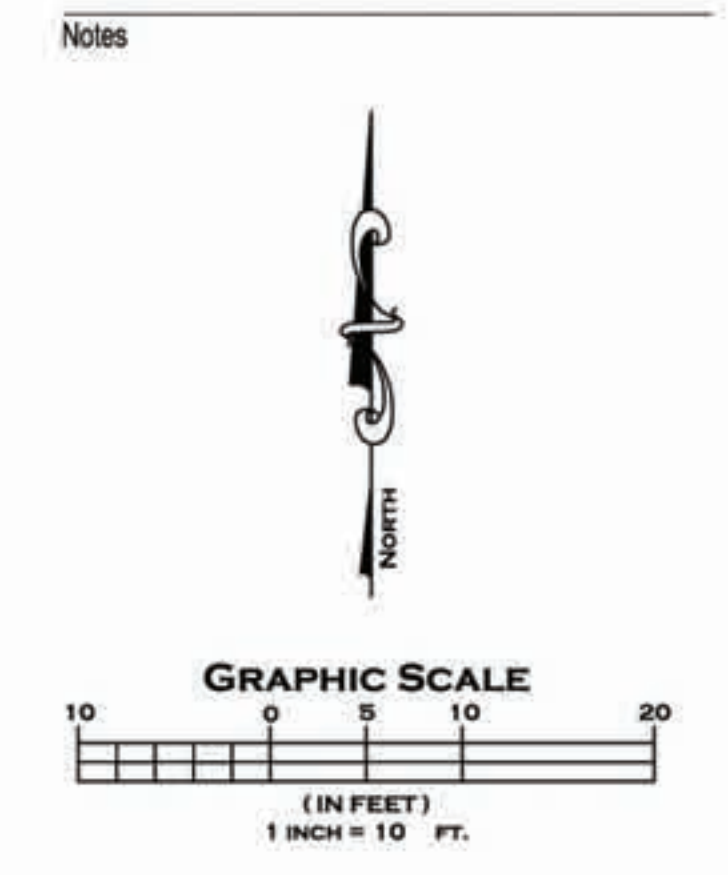


KNOTHE & BRUCE ARCHITECTS

7601 University Avenue Suite 201
Middleton, Wisconsin 53562
608-836-3690 Fax 836-6934

Consultant

KEN SAIKI DESIGN INC.
LANDSCAPE CONSULTANTS
200 S. PATTERSON ST. # 202
MADISON, WI 53705
Phone: 608-261-2920
www.ksb-llc.com



Revisions

City Plan Review - April 20, 2011
UDC Review - August 31, 2011

Project Title
1001 University Avenue

1001 UNIVERSITY AVE.
Drawing Title
Site Planting Plan

Project No. 1037 Drawing No. L-1.1

PLANT LIST					
Key	Botanical Name	Common Name	Qty.	Size at Planting	Comments
Deciduous Shrubs					
Ag	<i>Amelanchier x grandiflora</i> 'Princess Diana'	Princess Diana Serviceberry	2	5' Ht/B&B	shrub form
Am	<i>Aronia melanocarpa</i> 'Iroquois Beauty'	Iroquois Beauty Aronia	20	18" Ht/Cont.	
DI	<i>Diervilla lonicera</i>	Dwarf Bushhoneysuckle	22	18" Ht/Cont.	
Hm	<i>Heptacodium miconioides</i>	Seven Son Flower	2	5' Ht/B&B	shrub form
Ha	<i>Hydrangea arborescens</i> 'Grandiflora'	Snowhill Hydrangea	4	18" Ht/Cont.	
Evergreen Shrubs					
Tm	<i>Taxus x media</i> 'Everlow'	Everlow Yew	35	24" Spd./Cont.	
Perennials/Ground Covers					
ac	<i>Asarum canadense</i>	Wild Ginger	415	2" pot	space 12" oncenter
cr	<i>Cimicifuga racemosa</i> 'Brunette'	Brunette Snakeroot	8	1 gal. pot	
er	<i>Epimedium rubrum</i>	Red Barrenwort	17	2" pot	space 12" oncenter
hj	<i>Hosta x June</i>	June Hosta	16	1 gal. pot	

1 SITE PLANTING PLAN
1"=10'

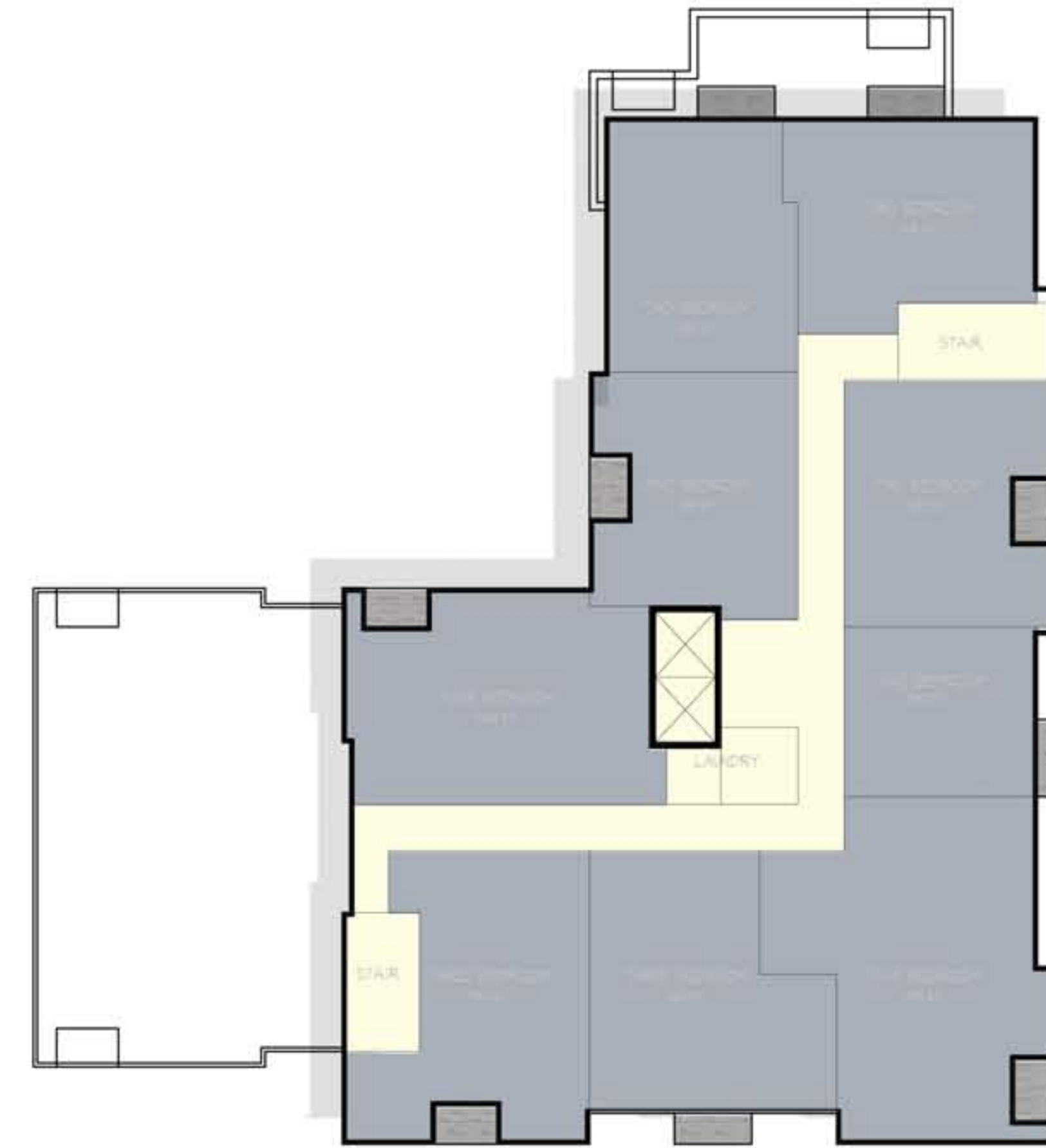
This document contains confidential or proprietary information of Knothe & Bruce Architects. Neither the document nor the information herein is to be reproduced, distributed, used, or disclosed, either in whole or in part, except as specifically authorized by Knothe & Bruce Architects. Knothe & Bruce Architects is a Limited Liability Company of Wisconsin.



1001 University Development
8 Story Proposal



Typical Second-Fourth Floor Plan



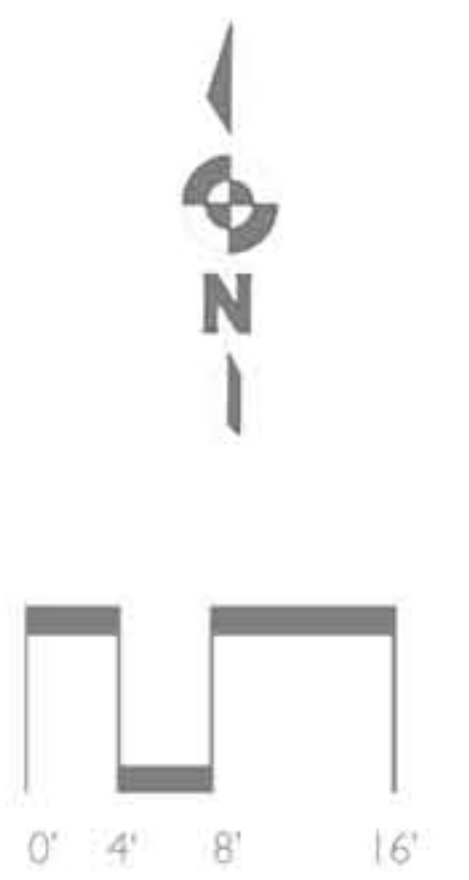
Typical Sixth-Eighth Floor Plan



Typical Basement Plan



Fifth Floor Plan



1001 University
Floor Plan
 August 22, 2011

**KNOTHE
 & BRUCE**
architects

Project # 1037



Brooks Street Elevation



University Avenue Elevation



Conklin Place Elevation



West Elevation

1001 University
8 Story Proposal

Elevations

August 22, 2011

**KNOTHE
& BRUCE**
architects

Project # 1037



1001 University Development
8 Story Proposal
Perspective #1



1001 University Development
8 Story Proposal
Perspective #2



1001 University Development
St. Francis Perspectives

August 22, 2011

**KNOTHE
& BRUCE**
architects

Project # 1037



Shadows affecting Luther Memorial November 1, 8:00am, 10:30am, 12:00pm, 2:00pm, 4:15pm

1001 University
Existing Conditions - Sun Study
June 29, 2011



Granger Hall Shadow on November 1, 8am

1001 University
Existing Conditions - Sun Study
June 29, 2011



Luther Memorial Shadow on November 1, 10:30 am

1001 University
Existing Conditions - Sun Study
June 29, 2011



Luther Memorial Shadow on November 1, 2:00 pm

1001 University
Existing Conditions - Sun Study
June 29, 2011

**KNOTHE
& BRUCE**
architects

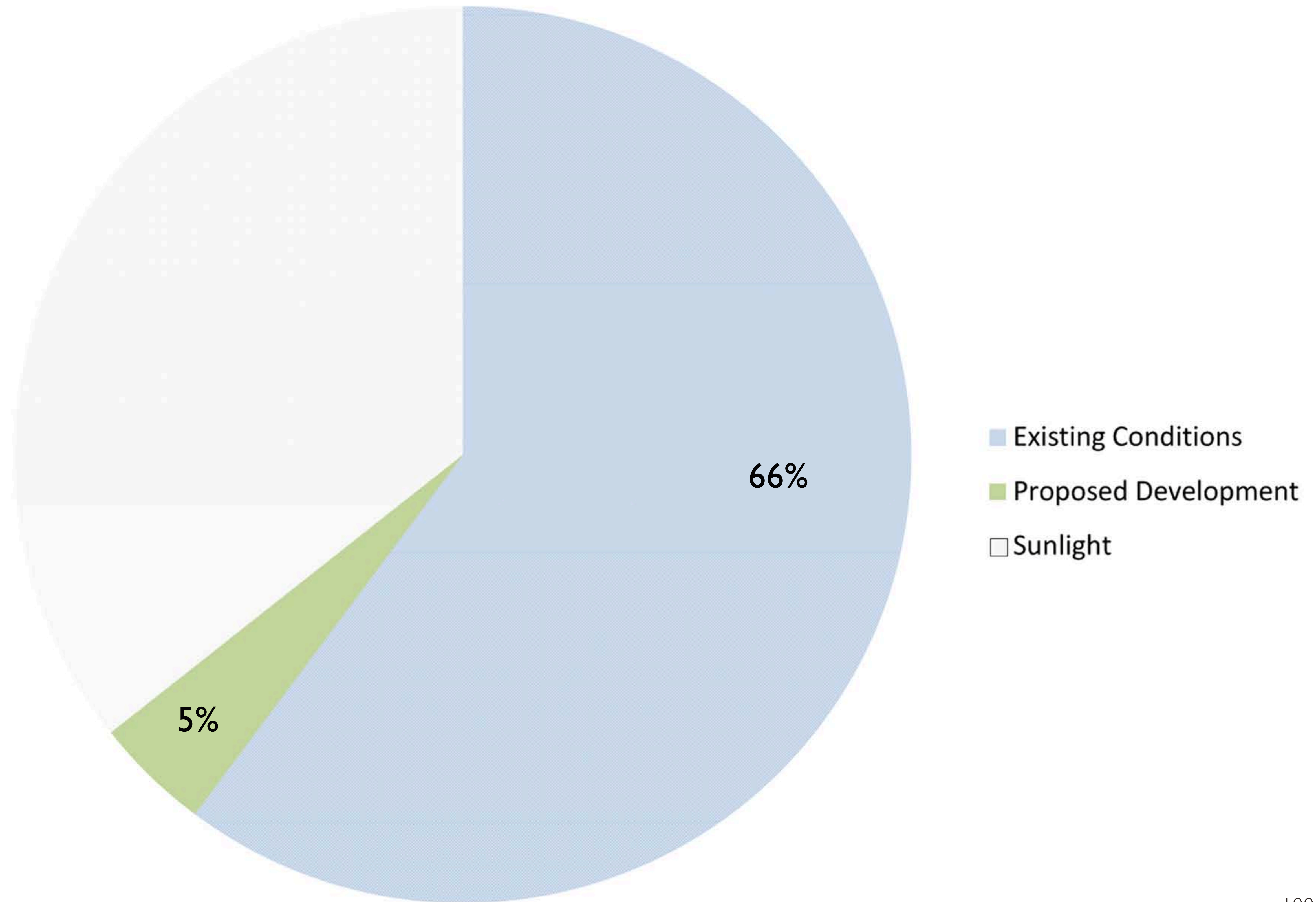
Project # 1037



Chemistry Building Shadow on November 1, 4:15pm

1001 University
Existing Conditions - Sun Study
June 29, 2011

Annual Average of Possible Solar Impact On Sanctuary and Nave Windows of Luther Memorial Church



1001 University
Sun Study- Graphs
July 11, 2011

A.

ATMOSPHERE ANALYSIS MADISON, WI

STUDY: Sun vs. Clouds 1953 through 2002

ACTUAL DAYS

	CLEAR	PARTLY CLOUDY	CLOUDY
JAN	7	6	17
FEB	7	6	15
MAR	6	7	17
1ST Q	20	19	49
% BY Q	22%	21%	54%
APRIL	6	8	16
MAY	7	9	15
JUNE	7	10	13
2ND Q	20	27	44
% BY Q	22%	30%	48%
JULY	9	11	11
AUG	9	10	12
SEPT	9	8	12
3RD Q	27	29	35
% BY Q	30%	32%	38%
OCT	9	7	14
NOV	5	6	18
DEC	6	6	19
4TH Q	20	19	51
% BY Q	22%	21%	56%



totals are approximate due to rounding

SOURCE: NOAA

[HTTP://LWF.NCDC.NOAA.GOV/OA/CLIMATE/ONLINE/CCD/CLDY.HTML](http://LWF.NCDC.NOAA.GOV/OA/CLIMATE/ONLINE/CCD/CLDY.HTML)

B.

ATMOSPHERE ANALYSIS MADISON, WI

STUDY:

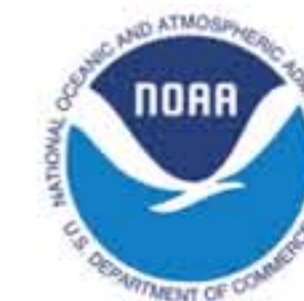
Percentage of
ANNUAL POSSIBLE SUNSHINE
1954 through 2004

MADISON, WI

54%

ANNUAL AVERAGE SUNSHINE PER YEAR

(Sun Reaching the Ground during Daylight Hours)



SOURCE: NOAA

[HTTP://WWW.NCDC.NOAA.GOV/OA/CLIMATE/ONLINE/CCD/PCTPOS.TXT](http://WWW.NCDC.NOAA.GOV/OA/CLIMATE/ONLINE/CCD/PCTPOS.TXT)

1001 University Development
8 Story Proposal
Weather Data

**KNOTHE
& BRUCE**
architects

Project # 1037

Direct Sunlight on East Sanctuary Windows-8:30am



Indirect Sunlight on West Sanctuary Windows-8:30am



1001 University
Existing Conditions - Luther Memorial

August 24, 2011

**KNOTHE
& BRUCE**
architects

Project # 1037