



**MADISON
PARKS
SASAKI**

Lake Monona Waterfront
Master Plan Presentation
Board of Park Commissioners
April 3, 2024



**A once-in-a-generation
opportunity to shape
the future of Madison's
urban waterfront.**



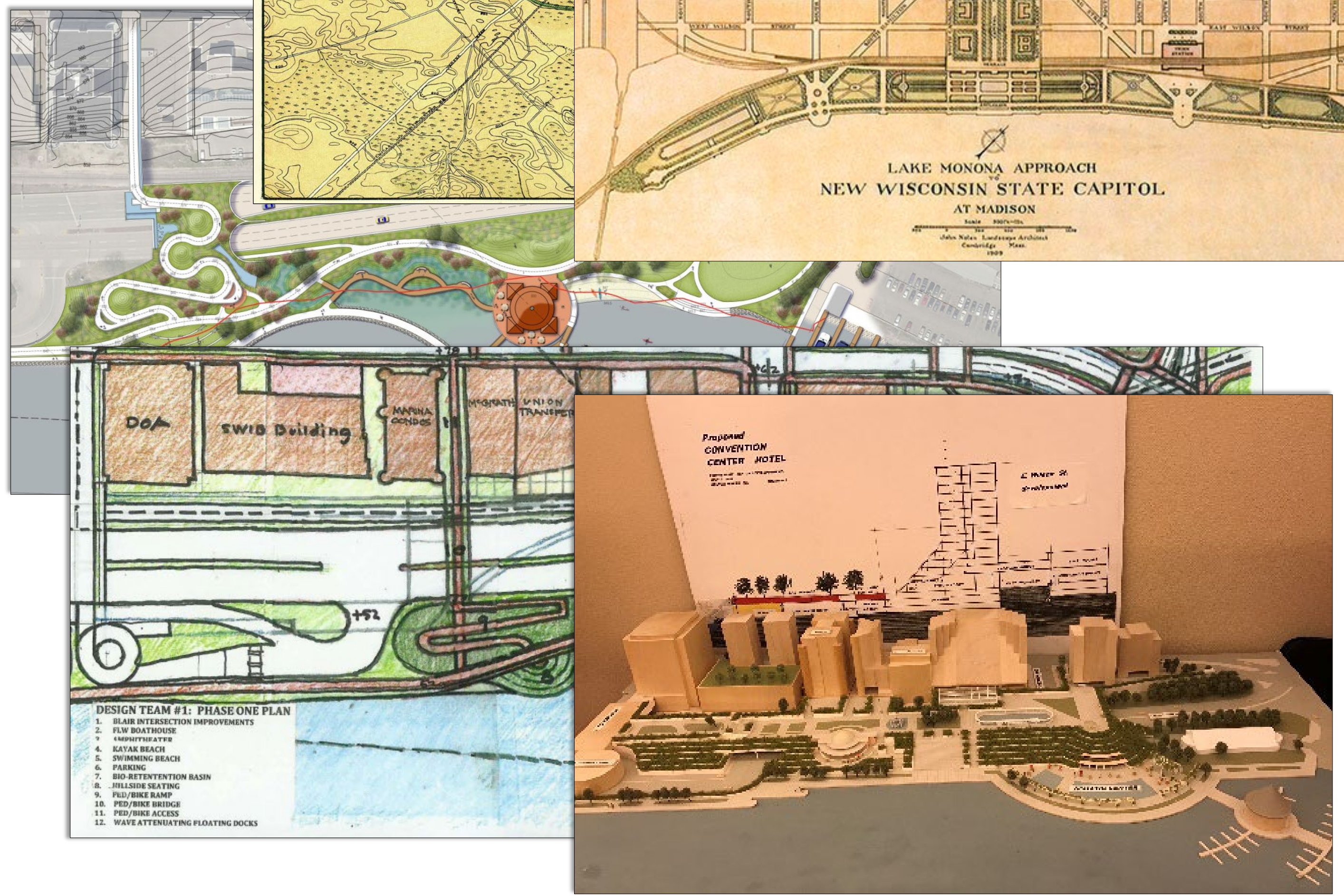
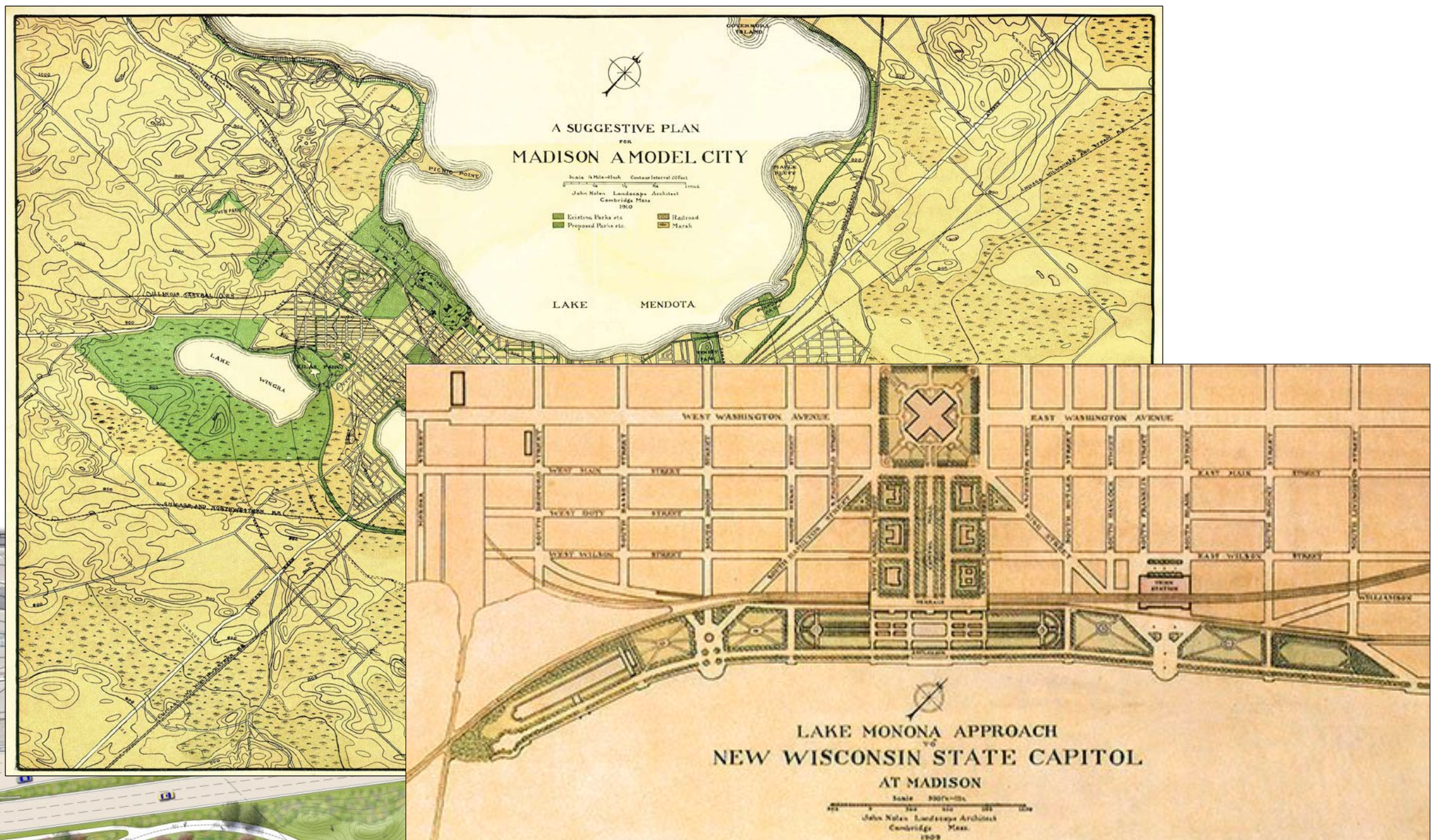
Master Plan – First Nations



- | | | |
|----------|-----------|--------|
| Village | Corn | Mounds |
| Camp | Sugarbush | Trail |
| Workshop | Garden | |

0 1 2 mi.

Master Plan – Prior Plans and Advocacy



About This Document

The document is the final output of a study conducted by the Nolen Centennial Project Advisory Task Force. The study was a collaborative effort between the City of Madison and the Nolen Centennial Project Advisory Task Force. The study was generally approved by the City Council.

Forward: The civic leadership behind Madison's past and future.

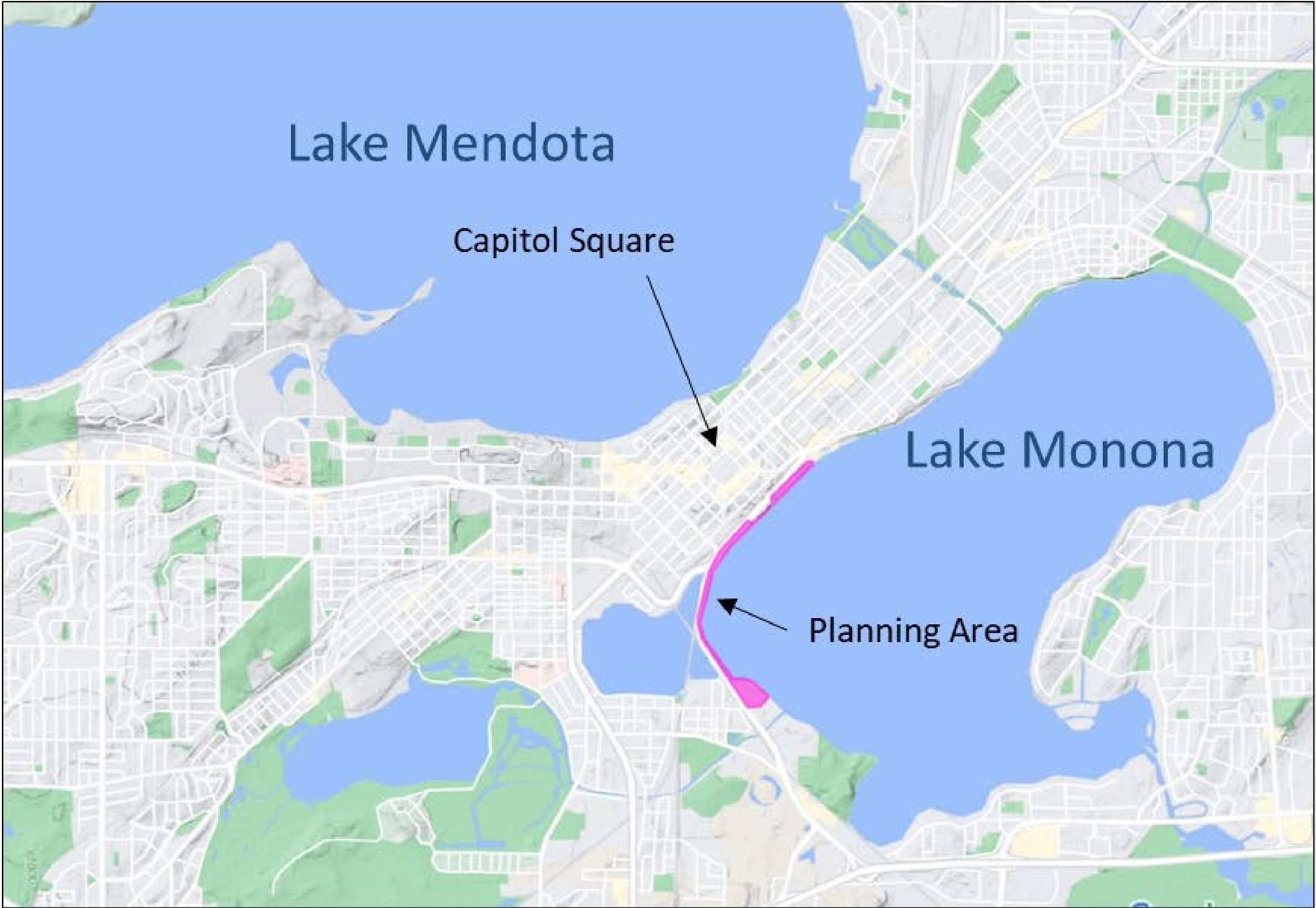
NOLEN WATERFRONT

centennial project

Master Plan – Definition

- **Are dynamic long-term planning documents that provide a framework for future site development and improvements.**
- **Embody community goals for the planning area and establish the spatial layout of desired amenities.**
- **Are conceptual in nature. The identified improvements and amenities require further design development and public and regulatory review prior to implementation.**

Lake Monona Waterfront – Planning Area



Lake Monona Waterfront – Planning Area



Overall Plan Development



2019 – Common Council authorizes development of a pre-design Preliminary Report for the planning area

2021 – Preliminary Report Completed

2022 – Common Council authorizes formation of Lake Monona Waterfront Ad-hoc Committee and holding a master plan design competition

2022 to 2023 – Madison Parks holds the Lake Monona Waterfront Design Challenge

2023 – The Ad-hoc Committee selects the Sasaki Team to proceed with Master Plan refinement

2023 – The Ad-hoc Committee unanimously approves the draft Master Plan for introduction to the Common Council

Lake Monona Waterfront Ad-hoc Committee

Committee Members

- 7 – Community Representatives
- 1 – Member of the Board of Park Commissioners
- 1 – Professional Civil/Structural Engineer
- 1 – Member of the Madison Parks Foundation
- 1 – Member of the Monona Terrace Board
- 1 – Member of the Friends of Nolen Waterfront
- 1 – Member of the Board of Public Works

*One of the above also a Professional Landscape Architect

19 months + Over 40 meetings

Lake Monona Waterfront Design Team



Multi-disciplinary design team that includes local consultant support

Selected by the Ad-hoc Committee through the Design Challenge process

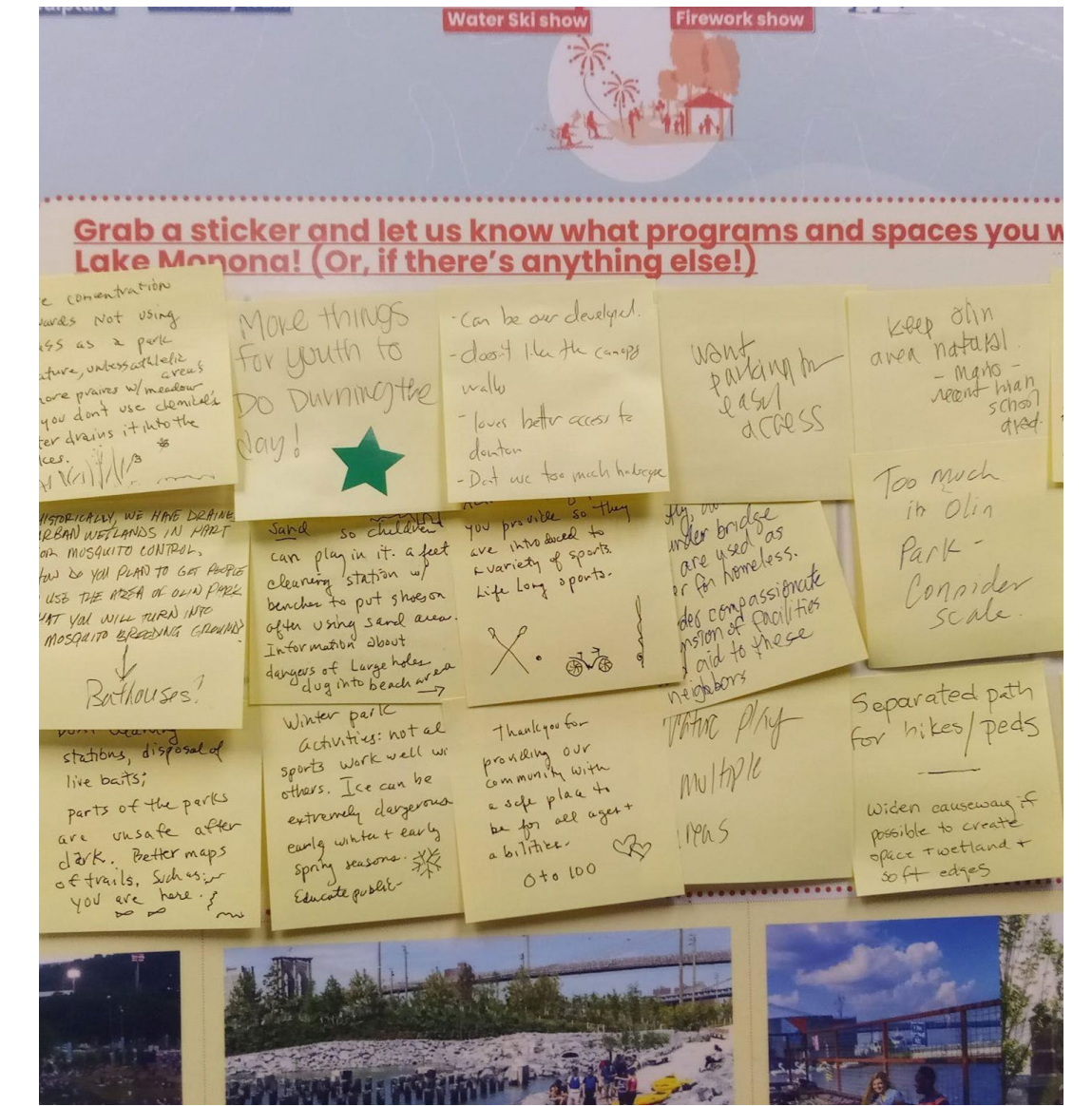
The Design Challenge was a 14-week design competition held by the City

Sasaki provided regional, national and international expertise to the master plan development process

Community Engagement



Engagement Methods



What are your top 3 areas we should study further?

Cuales son tus tres areas principales que necesitan ser estudiadas?
Koj qhov kev tsum xam peb sab saum toj yog dab tsi?

A Beach and beach configuration study	●●●●●●●●	H Overlook Design	●●●●
B Neighborhood Accessibility Study	●●●●●●●●	I Expanded Dock and Floating Pier Study	●●●●●●●●
C Overlook Accessibility Study	●●●●●●●●●●	J Water Quality and Stormwater Management Study	●●●●●●●●●●●●●●
D + E Walking and Biking Paths	●●●●●●●●●●	K Kayak Dock and Docking Feasibility Study	●●●●●●●●●●●●●●
F Crossing Study at 1st Main Street	●●●●●●●●●●	L Lake Park Art-grade Public Art Study	●●●●●●●●
G Art-grade Connections at 1st Main Street	●●●●●●●●●●		

Lake Monona Waterfront Master Plan

DRAFT 123

CHANCE OF MIMOSA OR OTHER PLANTING SCHEMATIC COLLECTION TO #23 (MIMOSA WATERFRONT)

PRIORITY LOCAL ART

2D ART CONSIDERATIONS

URBAN LEARNING (MORE PUBLIC INTERACTIVE ART)

LEGEND:

- Emergency Boat Storage and Access
- Managed Boat Ramp
- Parking (ADA) and Stormwater Treatment
- Monona Bathhouse & Community Center
- Kayak Launch
- Public Opened Beach with Water Access
- Restrooms and Changing Rooms
- Beach Garden
- Water Play
- Lake Themed Adventure Playground
- E Wilson St Connection
- E Wilson St Connection
- Separated Bike Lane
- Heavier Connection
- Water Terrace
- Fishing Pier
- Flexible Lawn
- Lake Themed Adventure Playground
- E Wilson St Connection
- E Wilson St Connection
- Concession with Green Roof
- Winter Garden
- Accessible Pathway
- Water Terrace
- Fishing Pier
- Flexible Lawn
- Lake Themed Adventure Playground
- E Wilson St Connection
- E Wilson St Connection
- Concession with Green Roof
- Winter Garden

city

community

lake



Voices of the Lake Monona's Waterfront

Guiding Principles



Water Dialogue
**Create a Living
Edge along
Lake Monona's
Shoreline**



Nature Dialogue
**Inspire
Generational
Stewards**



City Dialogue
**A Place for All
to Connect &
Be Connected**



Community Dialogue
**Enhance Equitable
Access to Parks**



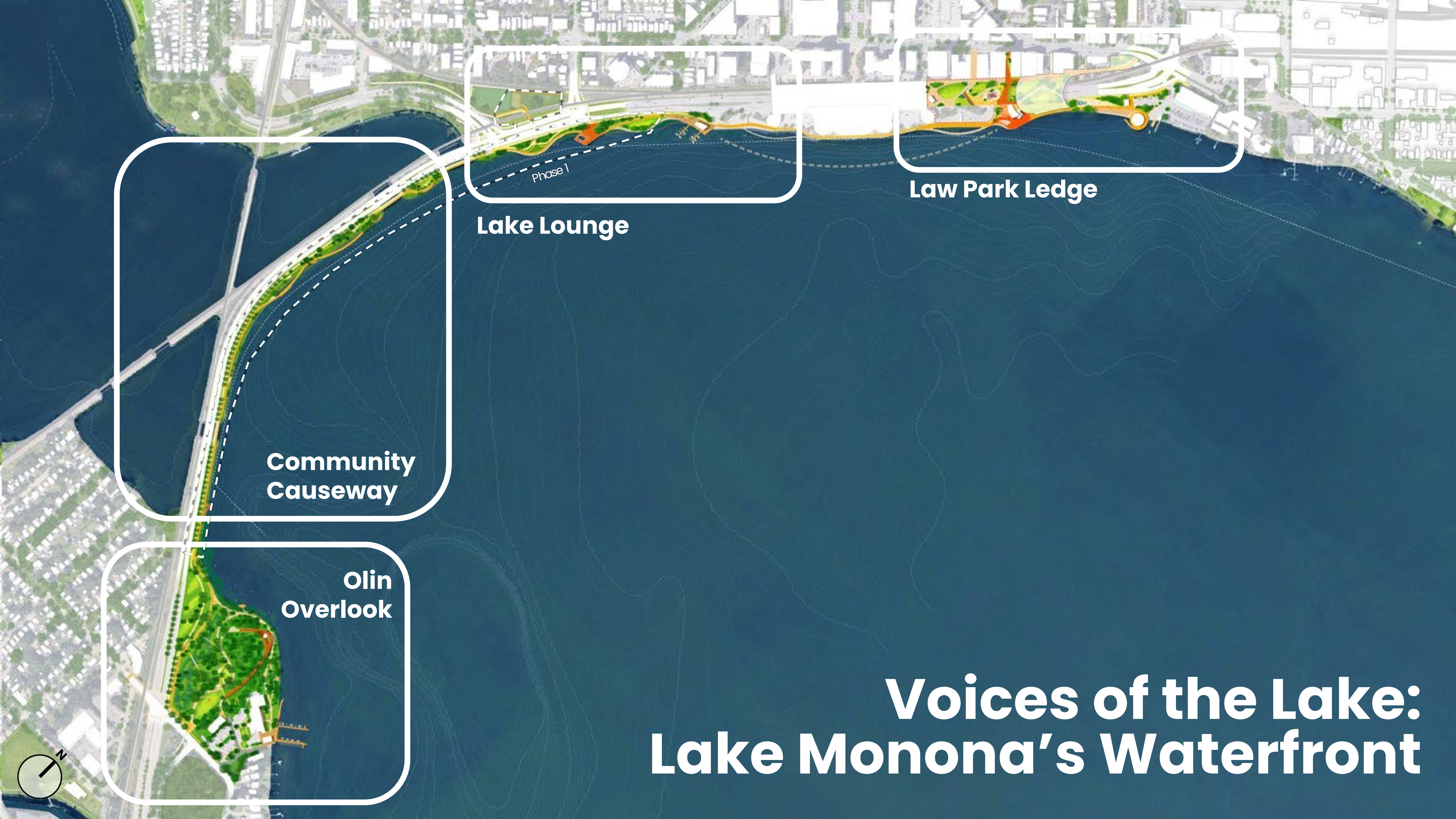
Culture Dialogue
**Starting with
the Sacred
Voices**



Architecture Dialogue
**A Balanced
Perspective**

Lake Monona Waterfront Master Plan





Lake Lounge



Law Park Ledge



Community Causeway



Olin Overlook

Voices of the Lake: Lake Monona's Waterfront





**Community
Causeway**

Phase 1



When I first moved to Madison, I drove in on John Nolen and saw the city and the lake. It was just like, oh my god, I love living here.



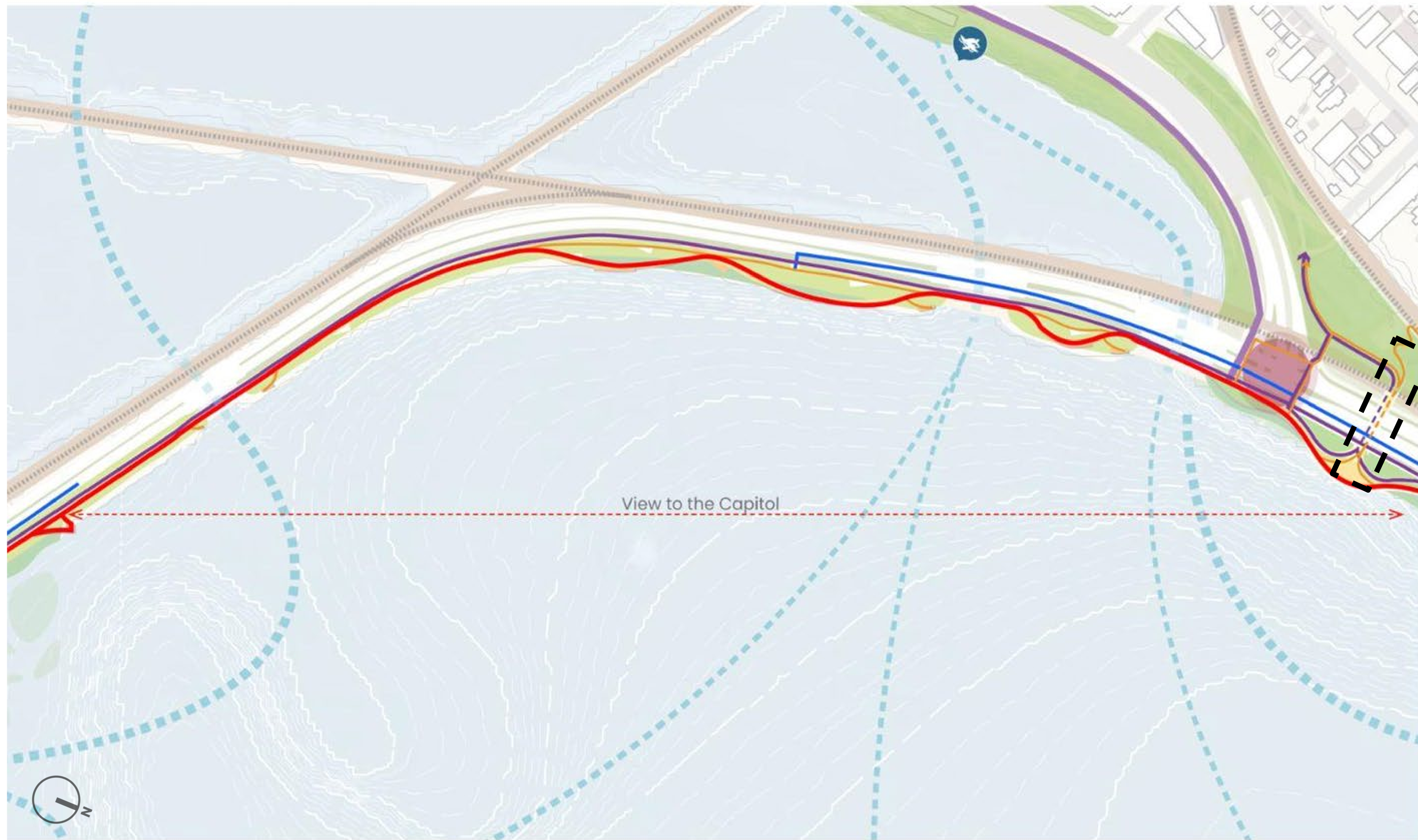
Katie Nash
Madison Resident



- 1 Dedicated Bike Lane
- 2 Jogging Path
- 3 Walking Path
- 4 Boardwalk (with seating along JND)
- 5 Storage
- 6 Flexible Lawn
- 7 Capital Overlook Seating Area
- 8 Street Trees Preserving View Corridor towards the Capitol
- 9 Bioswales & Rain Gardens
- 10 Fishing Terrace
- 11 John Nolen Drive Improvement
- 12 Capitol View Plaza
- 13 Fishing Pier
- 14 Wave Protected Fringe Wetland

Community Causeway

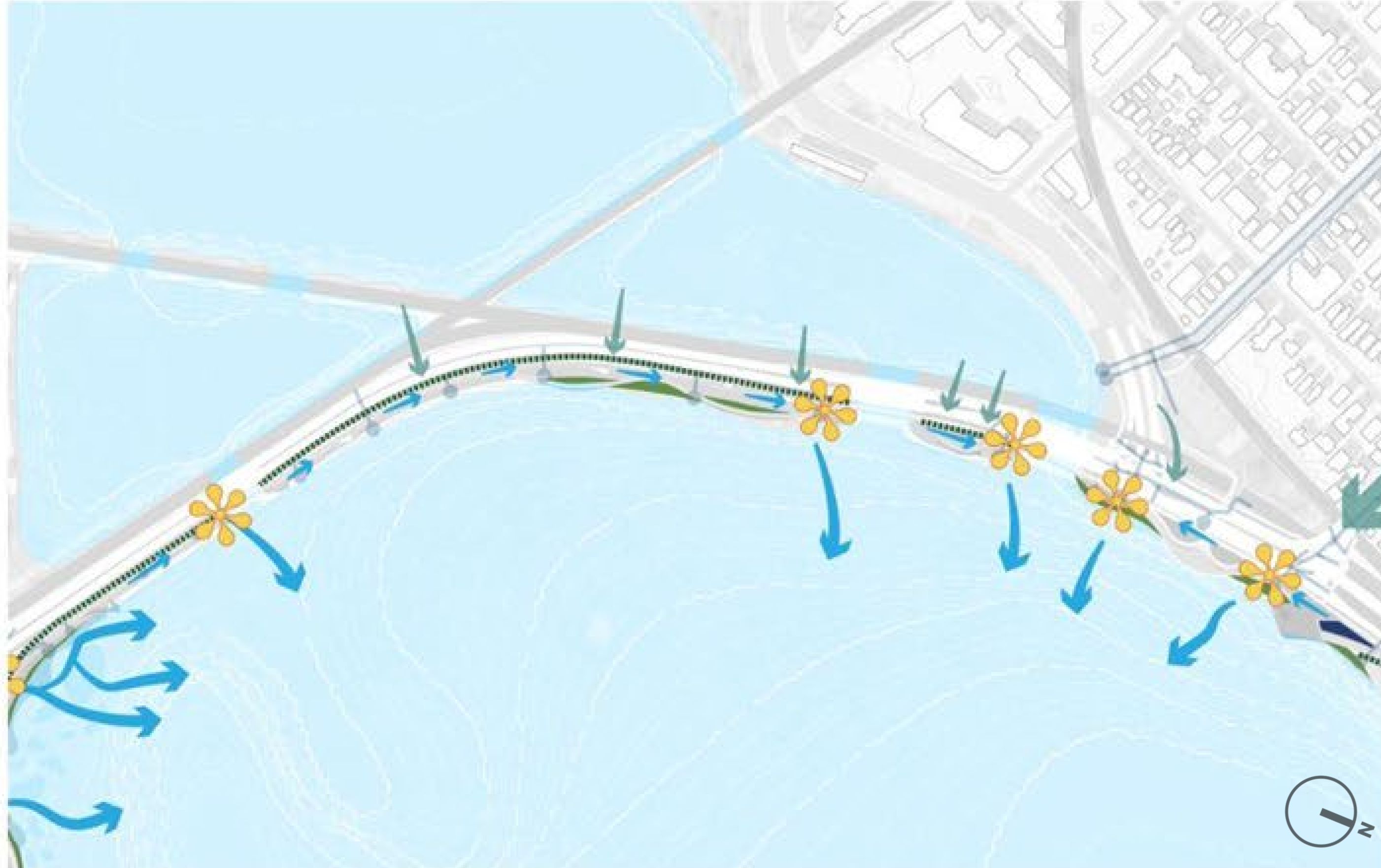
Circulation



- Primary Pedestrian Path
- Secondary / Informal Walking Path
- Bike Path
- Bike Underpass
- Connection to Existing Bike Trails
- Potential Off-site Bike Path Improvements
- Maintenance / Emergency Vehicle Access
- Railroad
- Intersection Improvements
- Boat and Kayak Route
- Potential Rowing Route
- Water Ski Show Route
- Boat Access Point
- Underpass

Hydrology and Ecology

Hydrology



Ecology



- STORM SEWER
- STORM SEWER OUTLET
- SURFACE RUNOFF
- TREATED WATER
- PERMEABLE PAVING
- BIOSWALE
- RAIN GARDENS
- WETLANDS
- 🌸 WATER QUALITY STRUCTURE

- FLOATING WETLAND
- FRINGE MESIC WETLAND
- WET MEADOW / RAIN GARDEN
- RECREATIONAL LAWN
- MESIC PRAIRIE
- LINEAR FLOODPLAIN FOREST
- NATIVE PLANT DEMONSTRATION GARDEN
- OAK OPENING
- FOREST FLOOR RESTORATION

Public Art Opportunities



View Framing Art



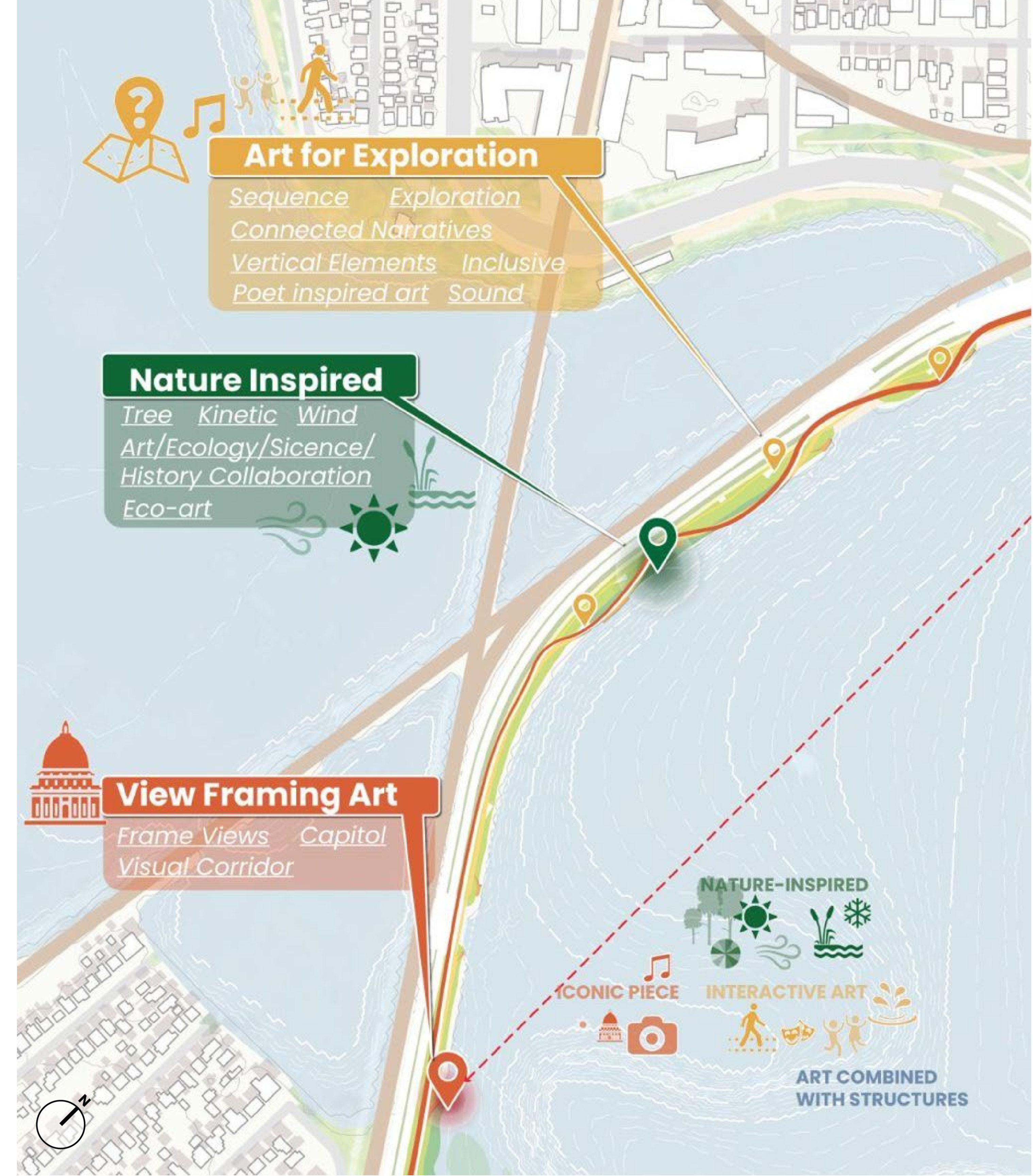
Small Scale Eco Art



Sustainable Art



Kinetic Art



What can it look like?



Fishing Pier



Bioswale and Rain Garden



Trail for All Speeds



Wetland and Fish Habitat



Boardwalk



Fishing Terrace

Community Causeway

Multi-use Trail

Fishing

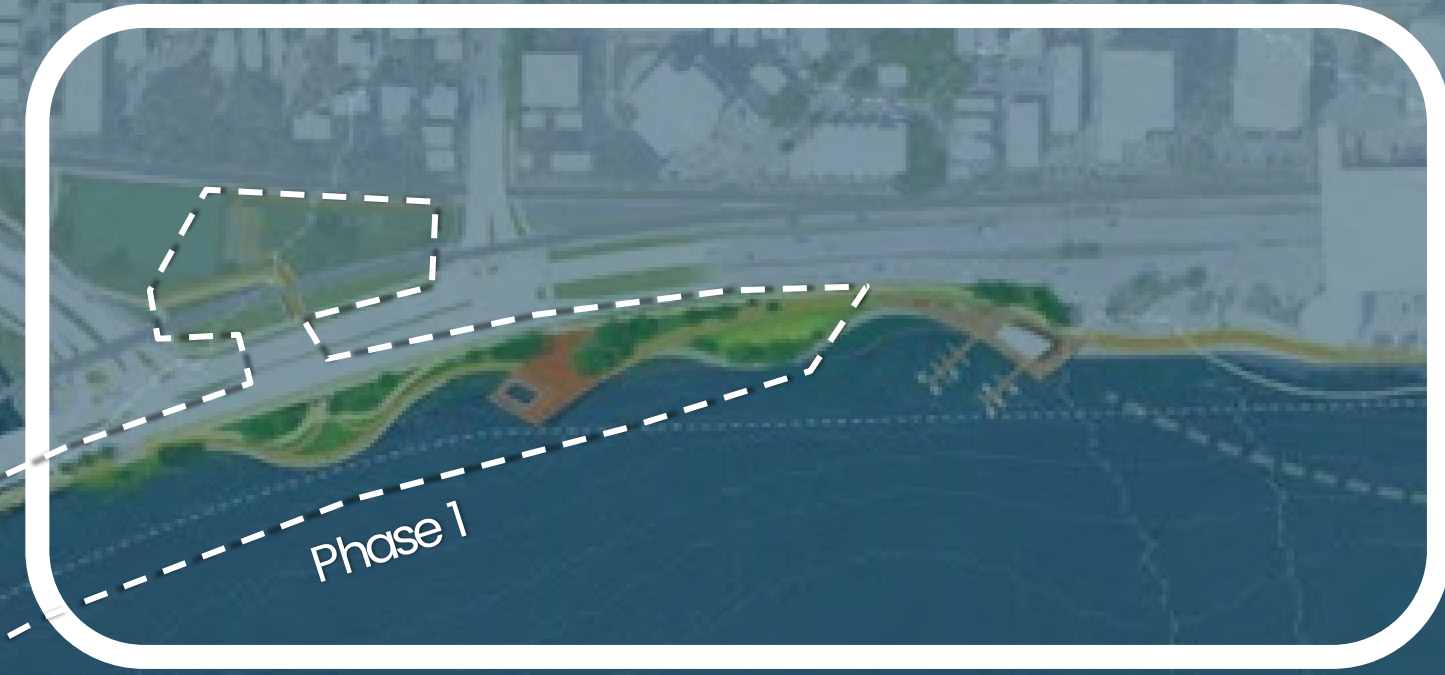
Wave Protected Fringe Wetland

Story Walk Art Piece



Community Causeway





Lake Lounge



It is a great opportunity, as best as we can with the space limitation and all the constraints we are facing, building in a way that has true improvement on environmental quality. We want to make this waterfront a national model for green infrastructure.



Paul Dearlove
Clean Lake Alliance



- 1 Ice Walk
- 2 Fishing Pier
- 3 Boat Vendor with Paddle Craft Livery
- 4 Rain Garden
- 5 Floating Piers for Transient Boats
- 6 Lakefront Promenade (Vehicular Grade)
- 7 Flexible Lawn & Food Truck Staging Area
- 8 Bike Lane
- 9 Improved Intersection
- 10 Hamilton Pier Plaza
- 11 Bike Repair Station
- 12 Pedestrian and Cyclist Underpass
- 13 Underpass Gateway Plaza
- 14 Fringe Wetland and Boardwalk
- 15 Improved Intersection

Lake Lounge

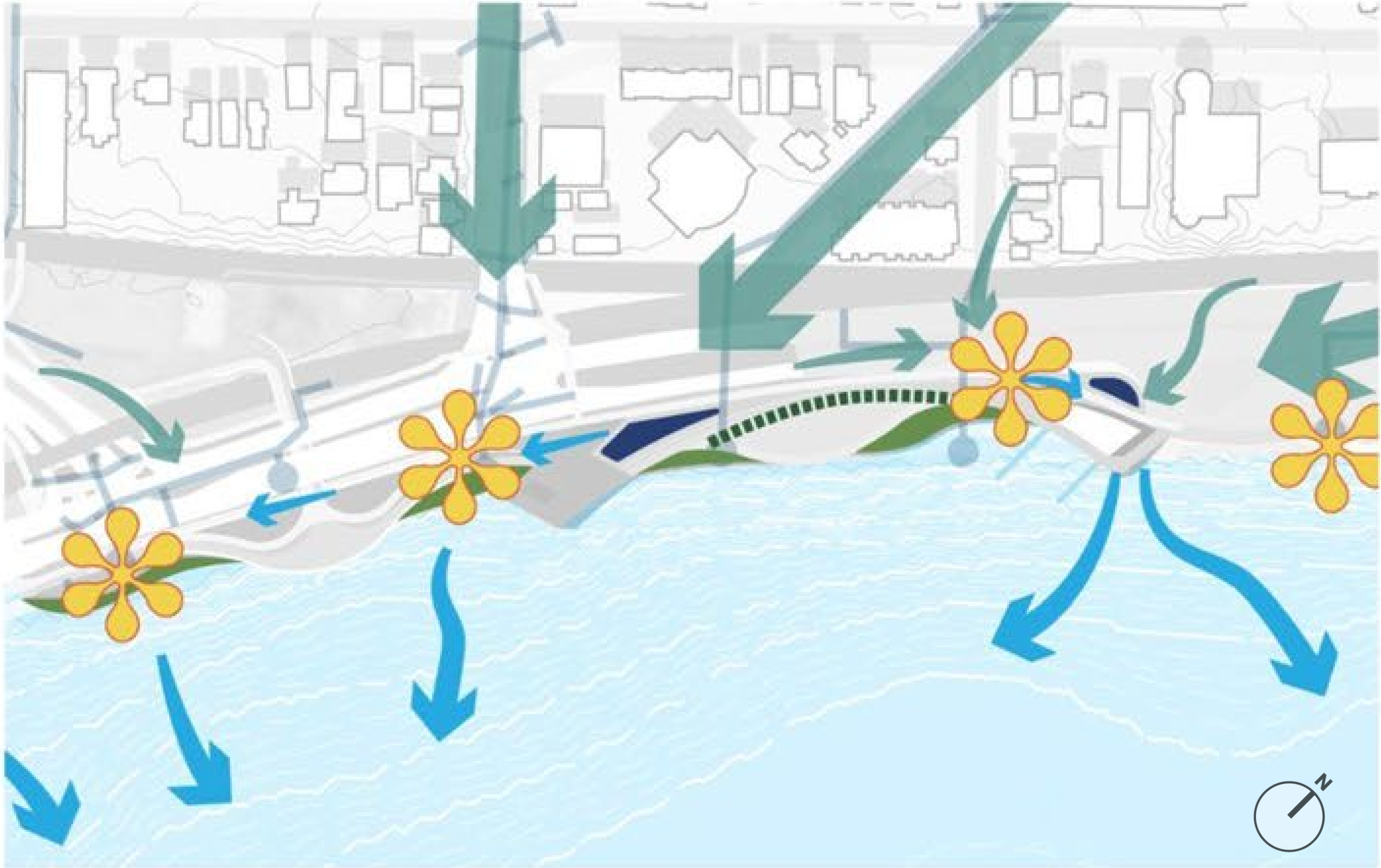
Circulation



- Primary Pedestrian Path
- Secondary / Informal Walking Path
- Bike Path
- Bike Underpass
- Connection to Existing Bike Trails
- Potential Off-site Bike Path Improvements
- Maintenance / Emergency Vehicle Access
- Railroad
- Intersection Improvements
- Boat and Kayak Route
- Potential Rowing Route
- Water Ski Show Route
- Boat Access Point
- Underpass

Hydrology and Ecology

Hydrology



- STORM SEWER
- STORM SEWER OUTLET
- SURFACE RUNOFF
- TREATED WATER
- PERMEABLE PAVING
- ⋯ BIOSWALE
- RAIN GARDENS
- WETLANDS
- ✿ WATER QUALITY STRUCTURE

Ecology



- FLOATING WETLAND
- FRINGE MESIC WETLAND
- WET MEADOW / RAIN GARDEN
- RECREATIONAL LAWN
- MESIC PRAIRIE
- LINEAR FLOODPLAIN FOREST
- NATIVE PLANT DEMONSTRATION GARDEN
- OAK OPENING
- FOREST FLOOR RESTORATION

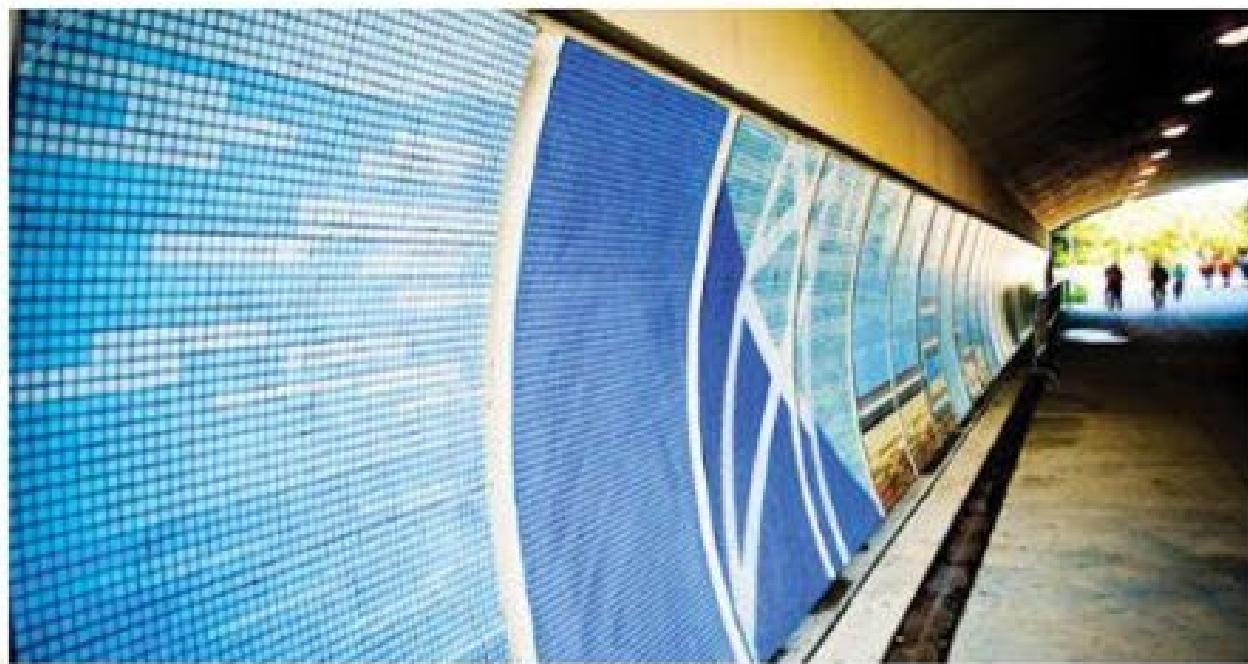
Public Art Opportunities



Pavement Design/Embedded Wayfinding



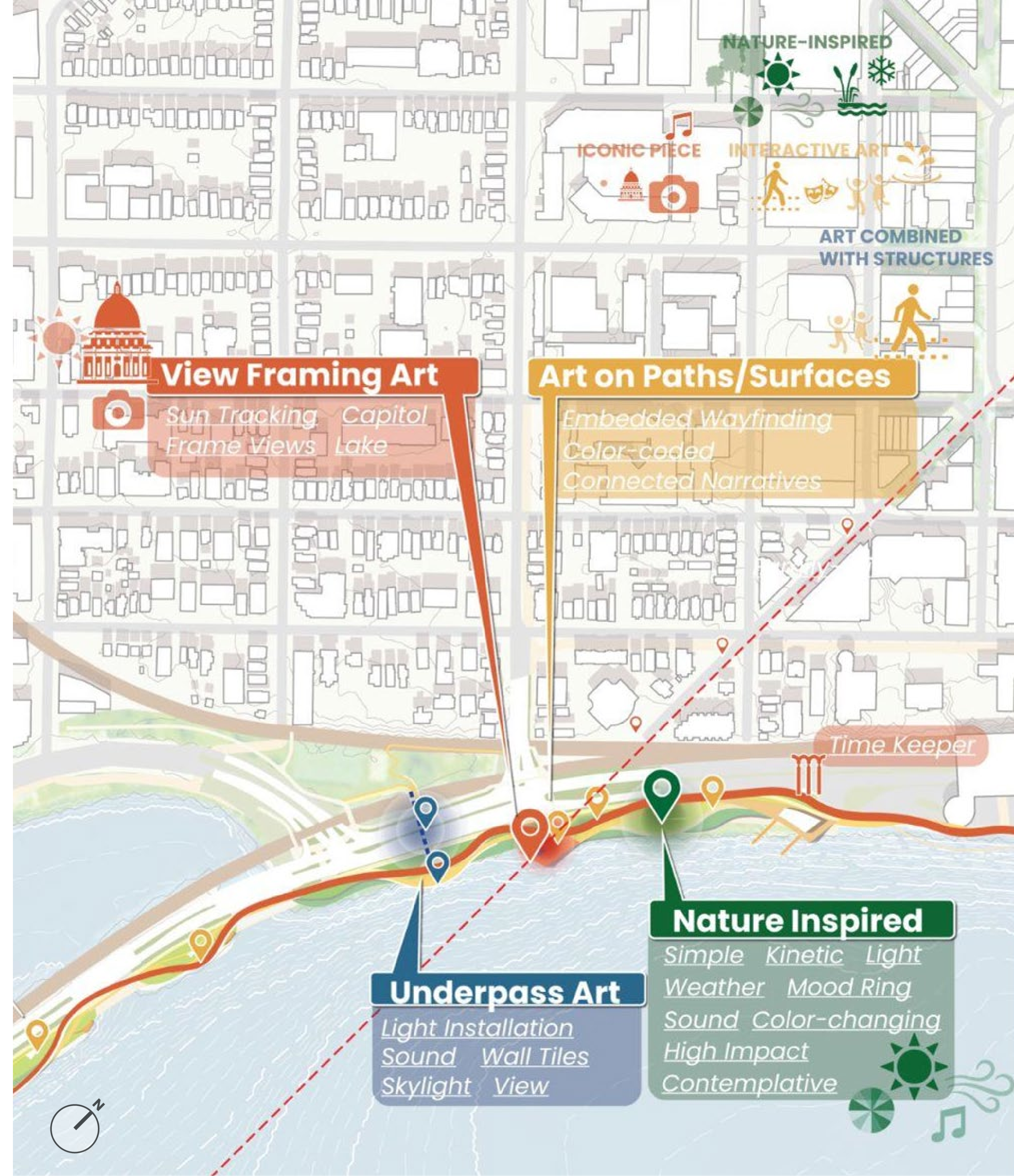
Sun Inspired Art



Underpass Art



Light and Color Inspired Installations



What can it look like?



Arts and Lake View Swing Sets



Food Trucks



Wetland, Fish Habitat and Boardwalk



Underpass



Boat Launch



Lakeside Gathering Place

Lake Lounge

Visual Connection with the Wisconsin State Capitol

Lighting

Swing


Kinetic Art

Plaza Pier Seating

Native Plant Demonstration Garden

HAYTON PLAZA
WE LOVE MADISON
THE NATURE HERE IS TIMELESS
TO BE HEARD





“ When you talk about the Olin Park view, that’s my favorite view. I used to be there with my grandmother. We look out into the lake and think what it will look like if the building were not there. I see it as a quiet and meditative place.”

**Olin
Overlook**

Samantha C. Skenandore

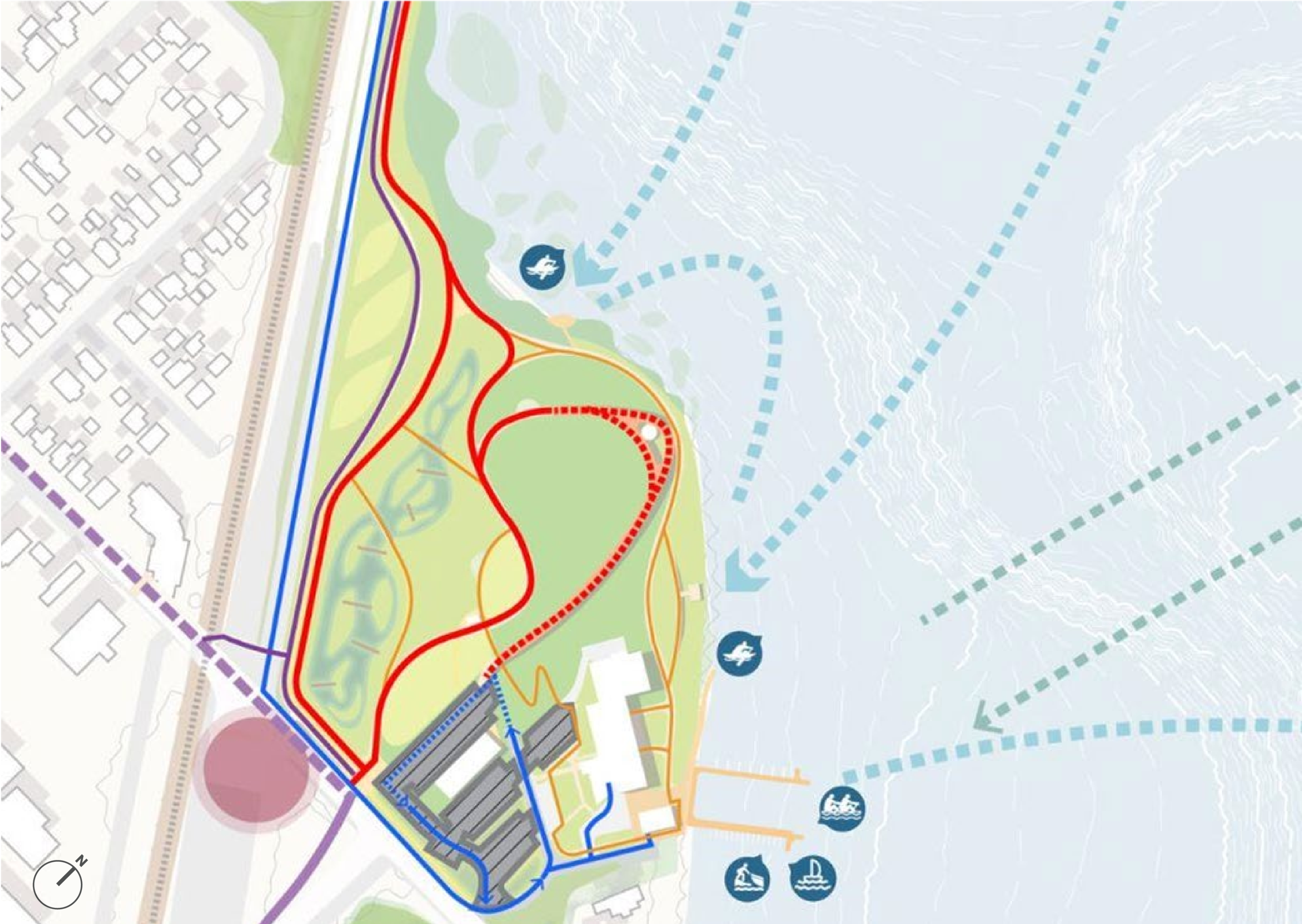
Tribal Law Attorney
Ho-Chunk Nation

Olin Overlook

- 1 Canopy Walk
- 2 Event Lawn
- 3 Bike Lane
- 4 Boat Dock
- 5 Landscape Berm for Noise Attenuation
- 6 Constructed Wet Mesic Prairie
- 7 Permeable Parking & Stormwater Treatment
- 8 Boardwalk
- 9 Forest Restoration
- 10 Waterfront Plaza
- 11 Nature Playground
- 12 Picnic Lawn
- 13 Play Feature / Art Installation
- 14 Kayak Launch
- 15 Overlook Deck
- 16 Nature Center / Art Studio
- 17 Treehouse
- 18 Boathouse
- 19 Park support facility, reservable community space
- 20 Restroom
- 21 Picnic Shelters



Circulation



- Primary Pedestrian Path
- Secondary / Informal Walking Path
- Bike Path
- Connection to Existing Bike Trails
- Maintenance / Emergency Vehicle Access
- Railroad
- Intersection Improvements
- Boat and Kayak Route
- Potential Rowing Route
- Boat Access Point
- On-site Parking

Hydrology and Ecology

Hydrology



Ecology



Public Art Opportunities



Environmental Art



Large Scale Land Art



Art Center and Maker Space



Cultural Art along Trails



Nature-Inspired Structures



What can it look like?



Nature Trails



Multi-use Lawn



Outdoor Classroom



Nature Playground



Canopy Walk



Waterfront Plaza and Picnic Area



Kayak Launch



Wetland, Fish Habitat and Boardwalk



Reservable Community Space

Nature Center/Art and Culture Center

Boat Dock

Picnic Lawn

Forest Restoration

Wet Mesic Prairie & Outdoor Classroom

Canopy Walk & Overlook

Landscape Berm for Noise Attenuation

Kayak Launch

specimen Tree

Fringe Mesic Wetland

Olin Overlook


Wildlife Habitat

Forest Restoration

Tree House

Canopy Walk

**Spring Ephemeral
Wildflower Plantings**

**Interpretive
Nature Trails**

Olin Overlook

THE MISSION IS TO KEEP THE CITY BEAUTIFUL





Law Park Ledge

“What we heard a lot is that, for a place like this, there are going to be lots of different people. So it’s really important to think about how you can create co-existence (of features and programs).”

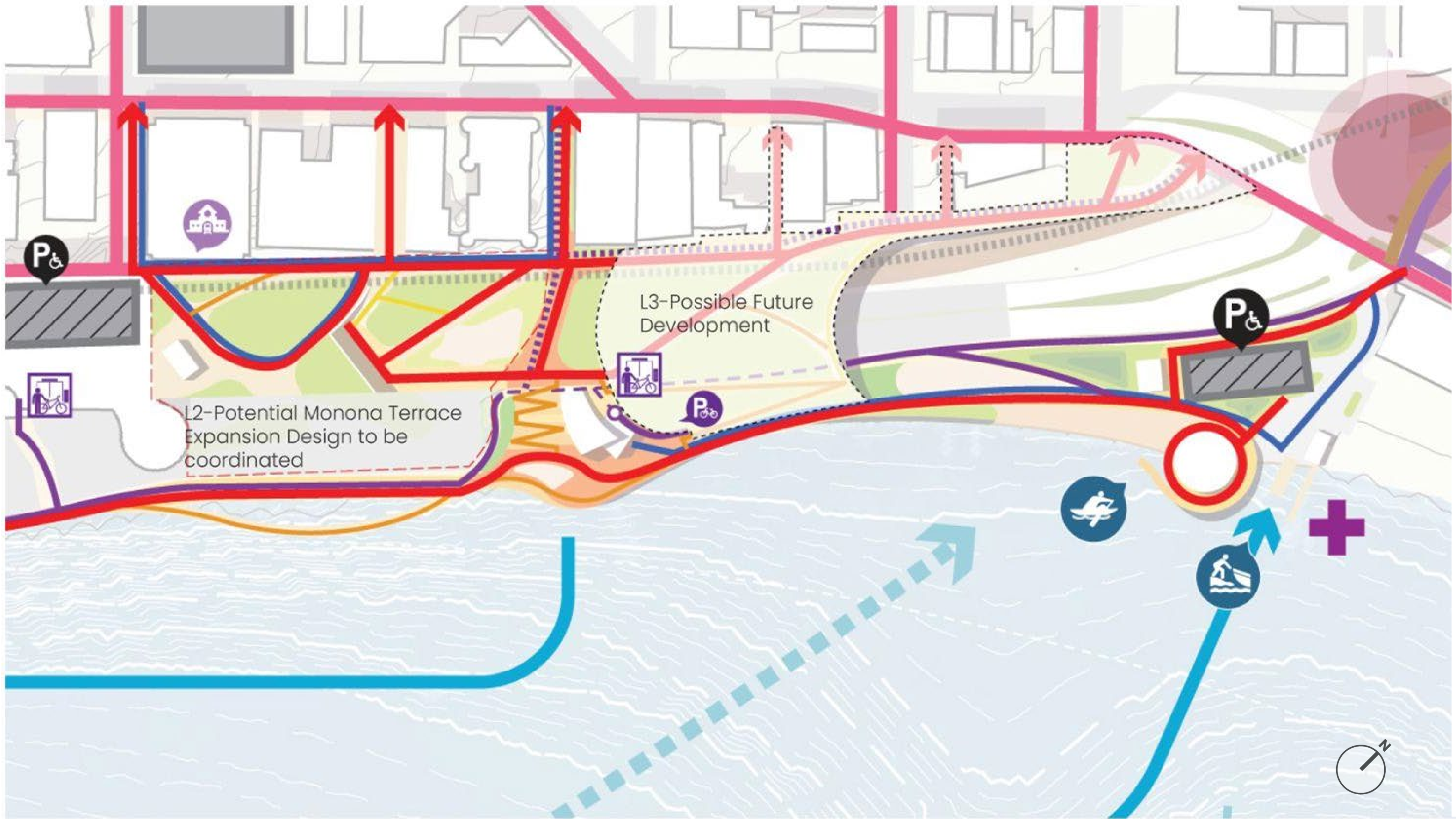
Annette Miller
Chief Executive Officer, EQT by Design



- | | | |
|--|-----------------------------|--|
| 1 Emergency Boat Storage and Access | 10 Lakefront Promenade | 19 Flexible Lawn |
| 2 Managed Boat Ramp | 11 Bike Lane | 20 Lake Themed Adventure Playground |
| 3 Parking (ADA) and Stormwater Treatment | 12 Elevator Connection | 21 E Wilson St Connection – per City access easement |
| 4 Monona Boathouse | 13 Concession and Restrooms | 22 E Wilson St Connection – pending |
| 5 Kayak Launch | 14 Event Stage | 23 Green Roof and Outdoor Amenities |
| 6 Public Upland Beach with Water Access | 15 Waterfront Amphitheater | 24 Winter Garden |
| 7 Restrooms and Changing Rooms | 16 Accessible Ramp | |
| 8 Rain Garden | 17 Water Terrace | |
| 9 Water Play | 18 Fishing Pier | |

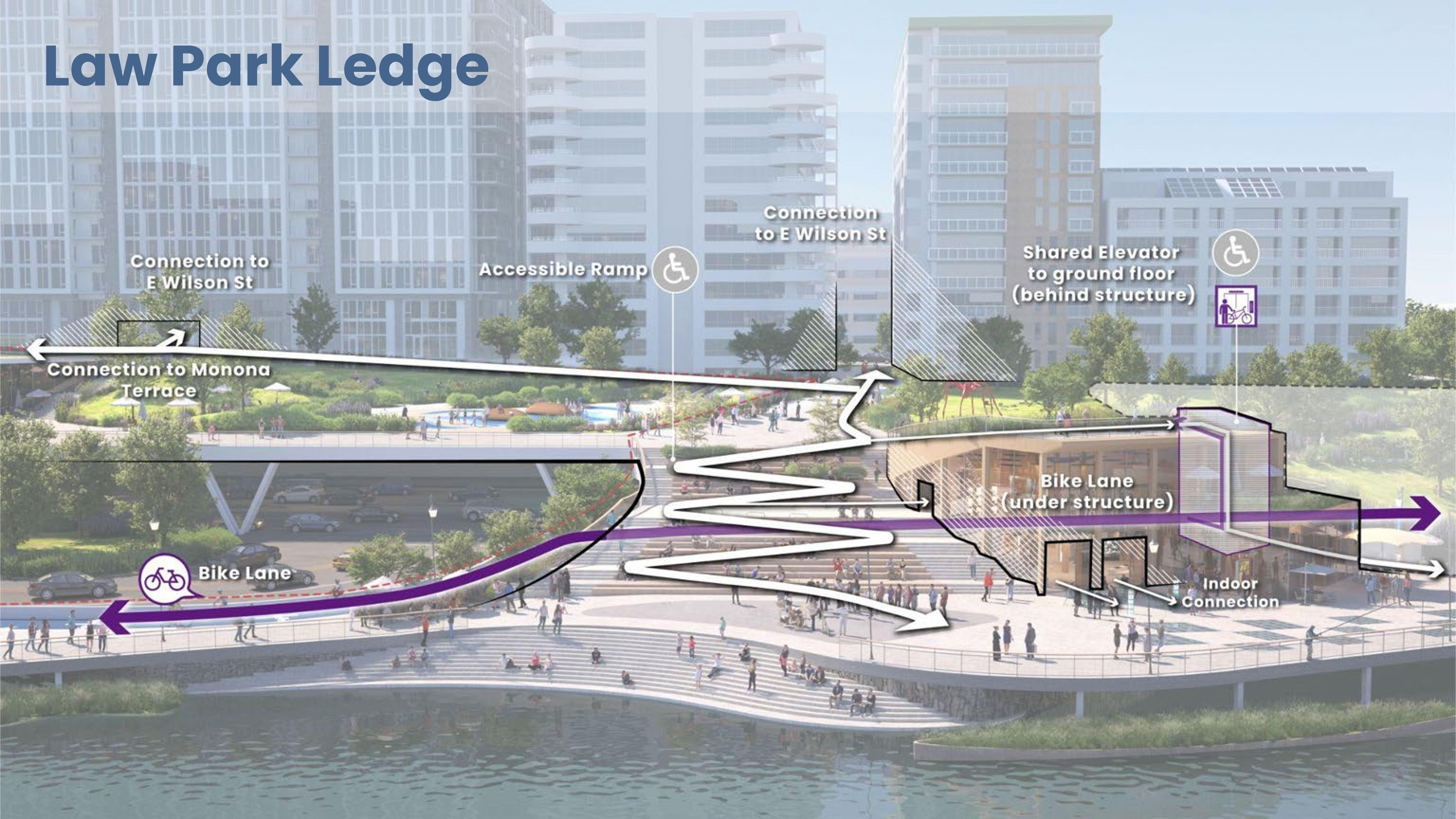
Law Park Ledge

Circulation



- Primary Pedestrian Path
- Secondary / Informal Walking Path
- Bike Path
- ⋯ Bike Underpass
- Connection to Existing Bike Trails
- Maintenance / Emergency Vehicle Access
- ⋯ Railroad
- Intersection Improvements
- ⋯ Boat and Kayak Route
- ⋯ Potential Rowing Route
- Water Ski Show Route
- ⊙ Boat Access Point
- P Off-site City Operated Parking
- P On-site Parking
- ⊠ Elevators
- ⊠ Potential Train Station
- + Emergency Water Access

Law Park Ledge



Connection to
E Wilson St

Accessible Ramp

Connection
to E Wilson St

Shared Elevator
to ground floor
(behind structure)

Connection to Monona
Terrace

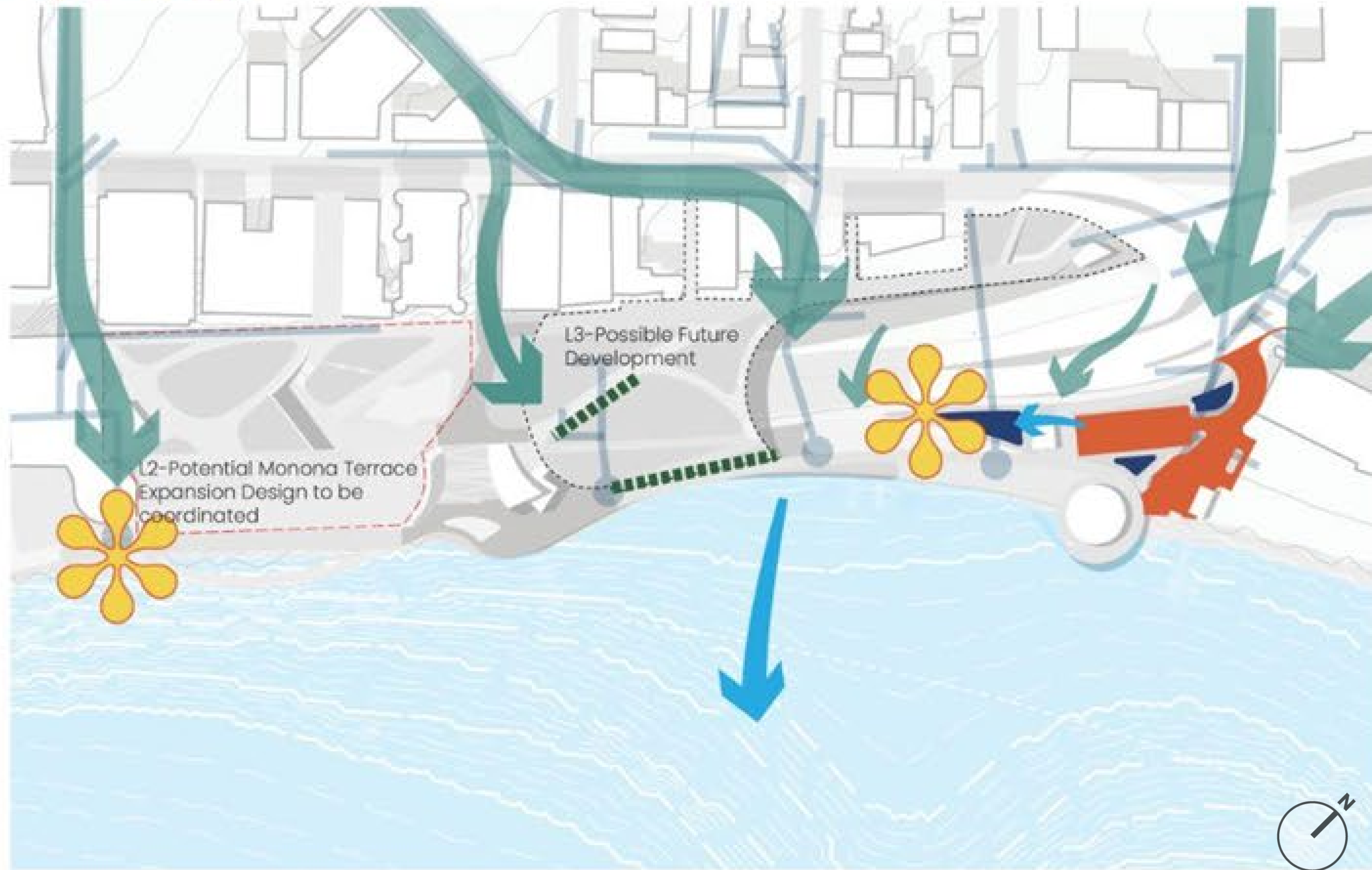
Bike Lane
(under structure)

Bike Lane

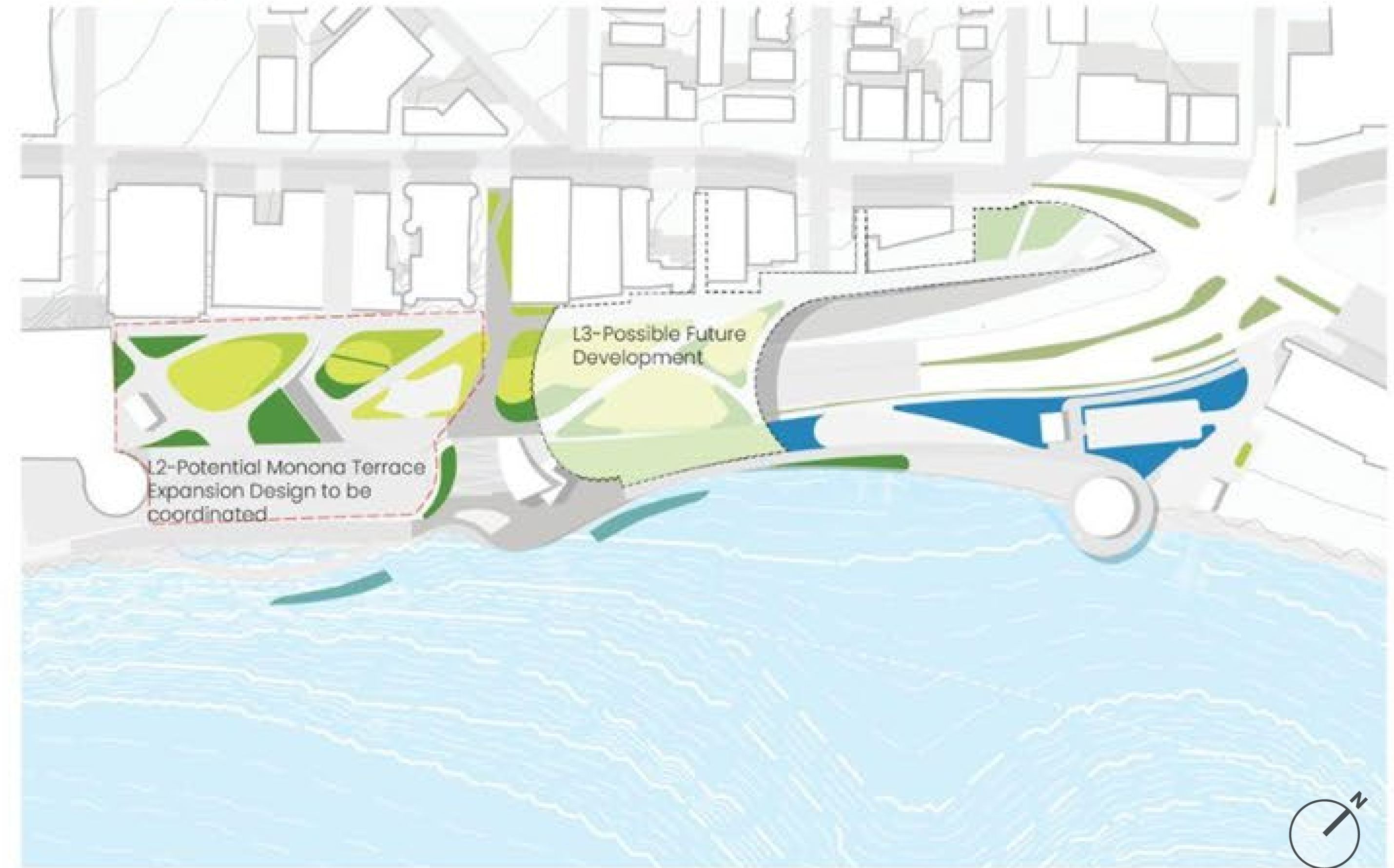
Indoor
Connection

Hydrology and Ecology

Hydrology



Ecology



- STORM SEWER
- STORM SEWER OUTLET
- SURFACE RUNOFF
- TREATED WATER
- PERMEABLE PAVING
- ⋯ BIOSWALE
- RAIN GARDENS
- WETLANDS
- ✿ WATER QUALITY STRUCTURE

- FLOATING WETLAND
- FRINGE MESIC WETLAND
- WET MEADOW / RAIN GARDEN
- RECREATIONAL LAWN
- MESIC PRAIRIE
- LINEAR FLOODPLAIN FOREST
- NATIVE PLANT DEMONSTRATION GARDEN
- OAK OPENING
- FOREST FLOOR RESTORATION

Public Art Opportunities



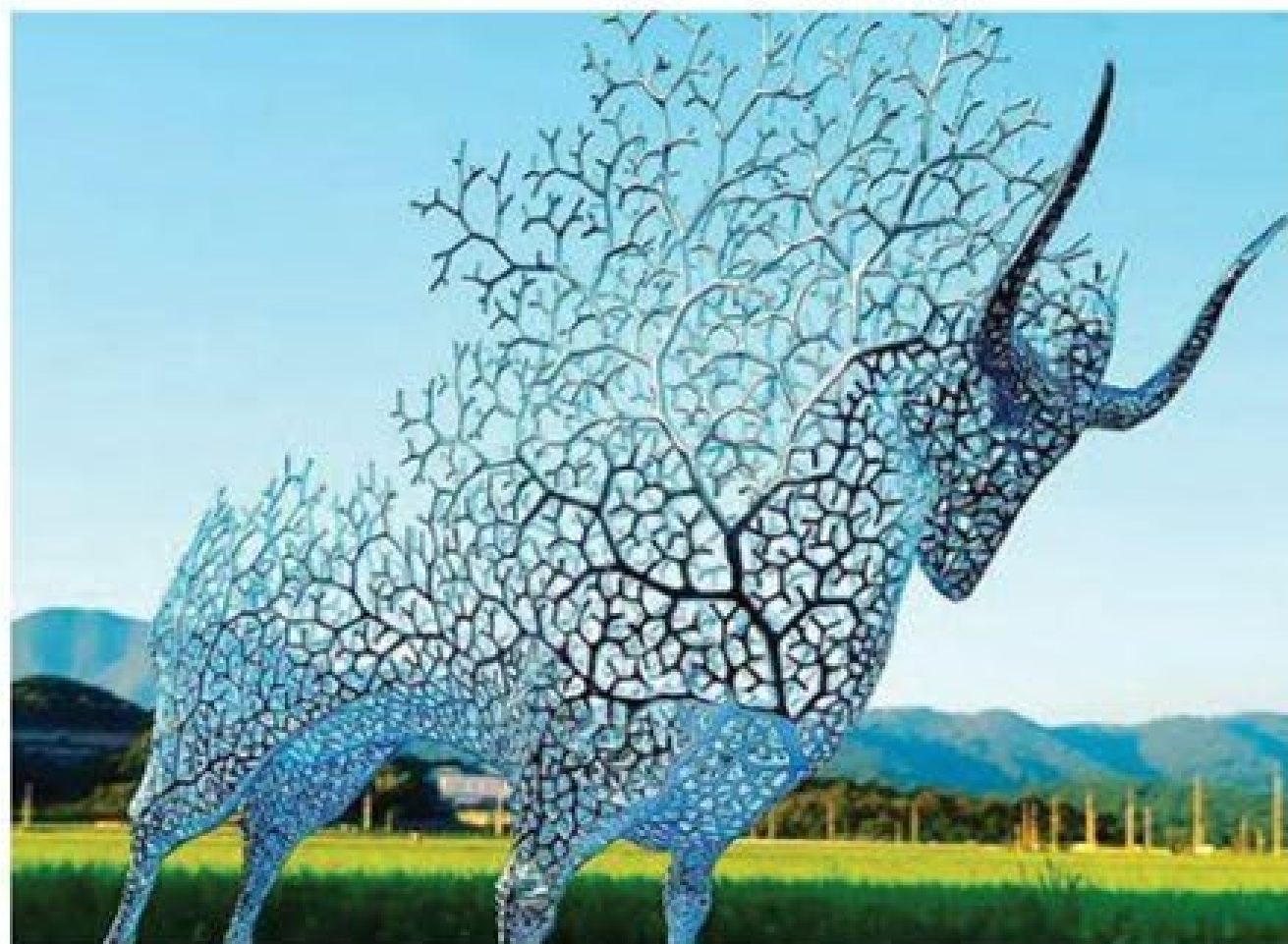
Modern Art



Temporary Art Installations



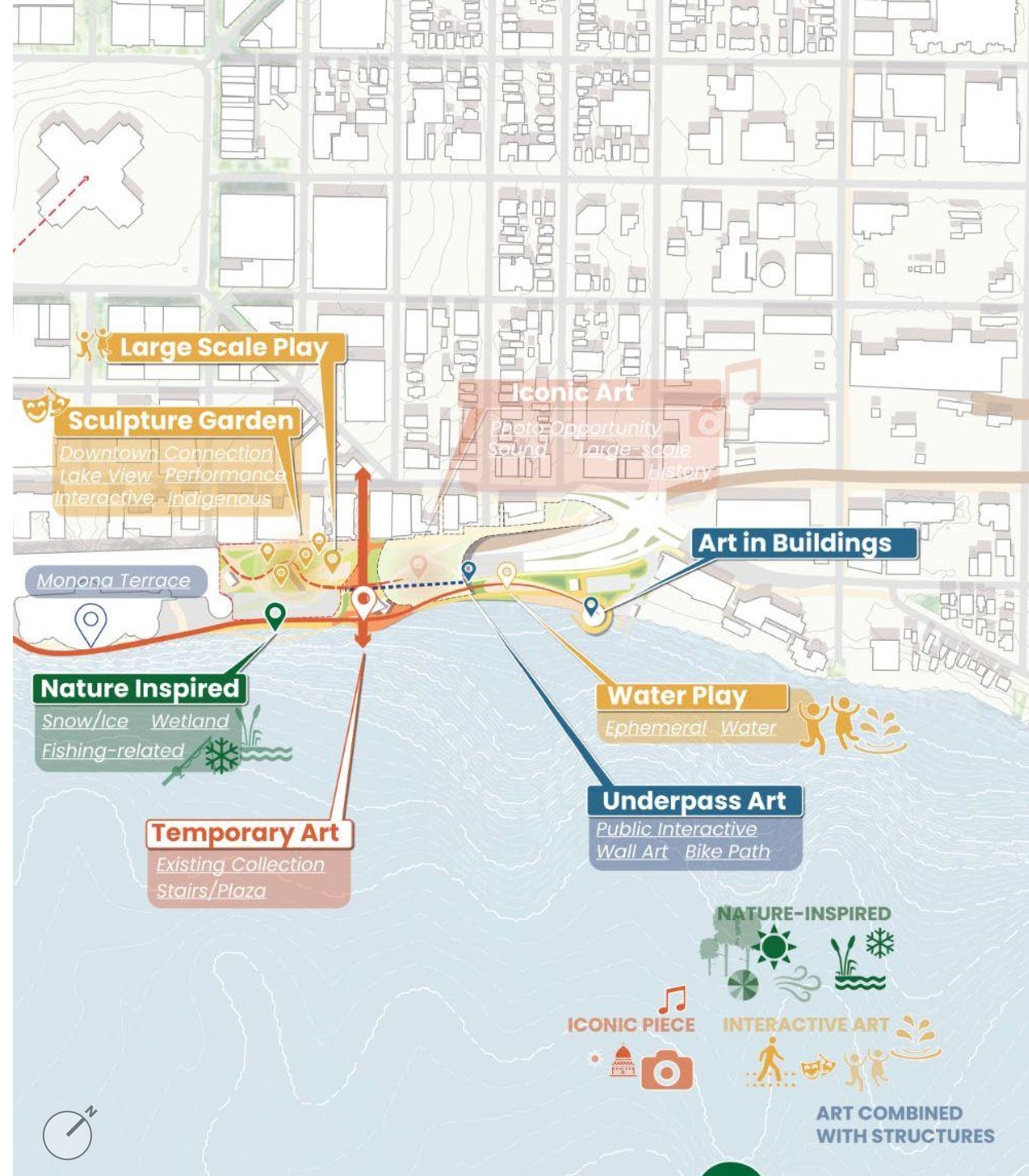
Art with Play



Sculpture Garden



Local Art Installation



What can it look like?



Flexible Lawn



Fishing Pier



Waterfront Promenade with Concession



Waterfront Amphitheater



Upland Beach



Water Play

Law Park Ledge

E. Wilson Upper Connection
(City Easement)

Upper Plaza,
Lawn and Art

Playground

Concession
and Elevator

Amphitheatre

STAGE AND
STEPS TO ICE WALK

Bike Path

Floating
Wetlands

L2 - Potential Monona Terrace
Expansion Design to be Coordinated

L3 - Possible Future
Development



Law Park Ledge



Boat House

Upland Beach

E. Wilson Upper Connection
(City Easement)

E. Wilson Upper Connection
(Pending)

L3 - Possible Future Development

Concession and Elevator

Floating Wetlands

Playground

L2 - Potential Monona Terrace
Expansion Design to be Coordinated

Amphitheatre

STAGE AND
STEPS TO ICE WALK



Lake Lounge



Law Park Ledge



Community Causeway



Olin Overlook



Thank you!