

City of Madison
Department of Public Works
PARKS DIVISION

City-County Building, Suite 104
210 Martin Luther King, Jr. Blvd.
PO Box 2987
Madison, WI 53701-2987

play
**MADISON
PARKS**

Graphical Scale
0 30
N

PROJECT: **PENN PARK
SHELTER RENOVATION
AND
CONCESSION/RESTROOM
BUILDING**

**PENN PARK
2101 FISHER STREET
MADISON, WI**

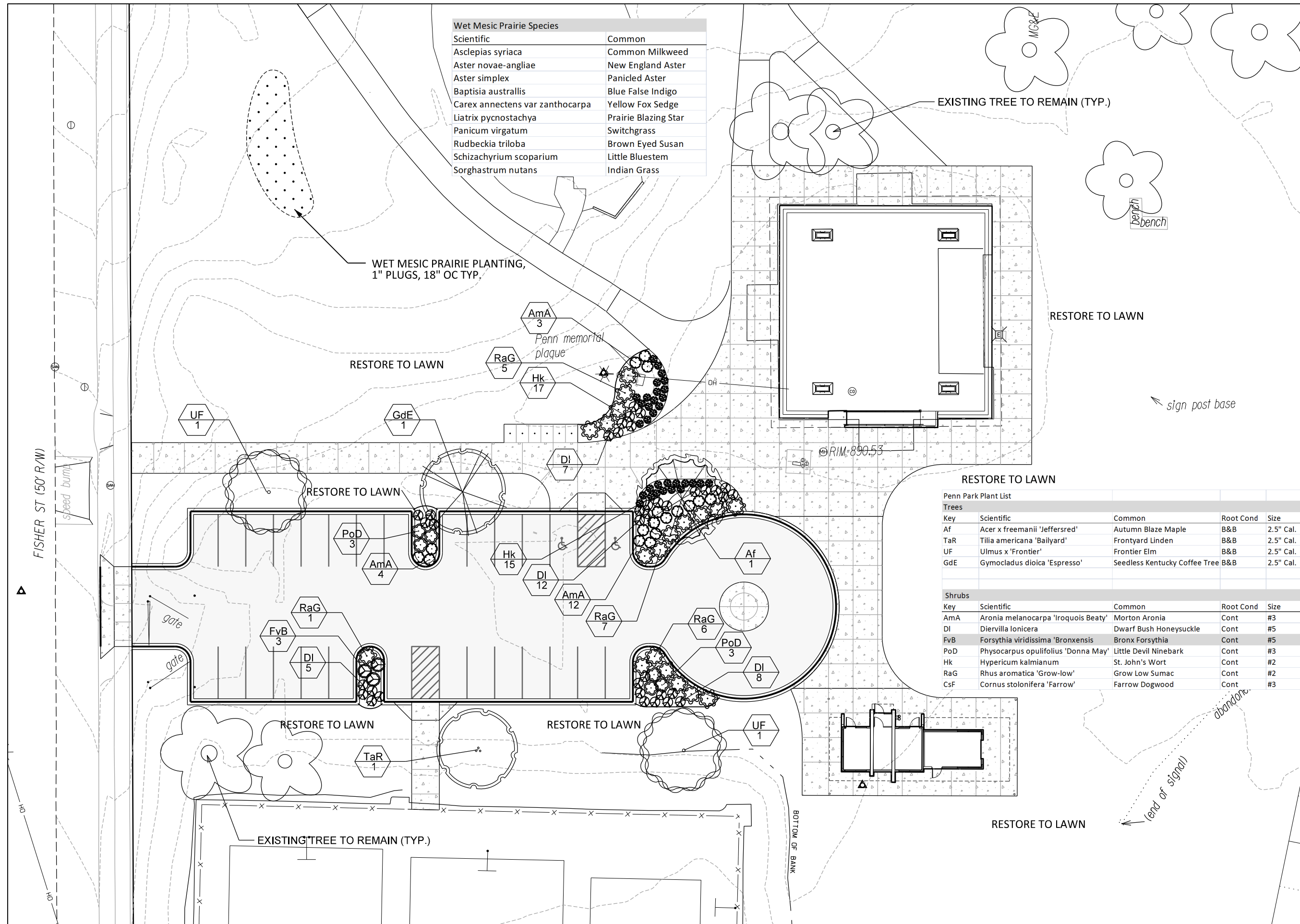
Although every effort has been made in preparing these plans and checking them for accuracy, the contractor and subcontractors must check all details and dimensions of their trade and be responsible for the same.

ITEM DATE
Drawn by: MS 12-19-2016

PUBLIC WORKS PROJECT #:

SHEET TITLE:
**SITE LANDSCAPE
PLAN**

SHEET NUMBER:
L-6



Wet Mesic Prairie Species	
Scientific	Common
Asclepias syriaca	Common Milkweed
Aster novae-angliae	New England Aster
Aster simplex	Panicled Aster
Baptisia australis	Blue False Indigo
Carex annectens var zanthocarpa	Yellow Fox Sedge
Liatris pycnostachya	Prairie Blazing Star
Panicum virgatum	Switchgrass
Rudbeckia triloba	Brown Eyed Susan
Schizachyrium scoparium	Little Bluestem
Sorghastrum nutans	Indian Grass

EXISTING TREE TO REMAIN (TYP.)

WET MESIC PRAIRIE PLANTING,
1" PLUGS, 18" OC TYP.

RESTORE TO LAWN

RESTORE TO LAWN

sign post base

RESTORE TO LAWN

RESTORE TO LAWN

Penn Park Plant List

Trees				
Key	Scientific	Common	Root Cond	Size
Af	Acer x freemanii 'Jeffersred'	Autumn Blaze Maple	B&B	2.5" Cal.
TaR	Tilia americana 'Bailyard'	Frontyard Linden	B&B	2.5" Cal.
UF	Ulmus x 'Frontier'	Frontier Elm	B&B	2.5" Cal.
GdE	Gymocladus dioica 'Espresso'	Seedless Kentucky Coffee Tree	B&B	2.5" Cal.

Shrubs

Key	Scientific	Common	Root Cond	Size
AmA	Aronia melanocarpa 'Iroquois Beauty'	Morton Aronia	Cont	#3
DI	Diervilla lonicera	Dwarf Bush Honeysuckle	Cont	#5
FvB	Forsythia viridissima 'Bronxensis'	Bronx Forsythia	Cont	#5
PoD	Physocarpus opulifolius 'Donna May'	Little Devil Ninebark	Cont	#3
Hk	Hypericum kalmianum	St. John's Wort	Cont	#2
RaG	Rhus aromatica 'Grow-low'	Grow Low Sumac	Cont	#2
CsF	Cornus stolonifera 'Farrow'	Farrow Dogwood	Cont	#3

FISHER ST (50' R/W)

BOTTOM OF BANK