

2008 Flushing Plan

Flushing Area	main length (miles)	Crew	Miles / Day	Flushing Days	Frequency (years)
6	22	Day	0.9	25	1
7	25	Day	0.8	34	1
8	32	Day	0.8	43	1
13	45	Day	1.4	32	1
23	19	Day	1.0	19	1
27	20	Night	0.6	19	1
27	13	Day	0.6	23	1
28	53	Day	0.9	59	1
128	8	Day	0.9	9	1
16	22	Day	1.0	22	1
24/17	8	Day	0.6	13	1
24/17	25	Night	0.4	66	1
11	37	Day	1.2	30	2
15	73	Day	1.2	62	2
25	38	Day	1.2	32	2
19	3	Day	1.4	2	2
18	42	Day	1.2	35	2
30	18	Day	1.2	15	2
14	22	Conv	1.2	18	2
10	53	Conv	1.1	48	2
12	63	Conv	0.9	68	2
20	61	Conv	0.9	71	2
9	55	Conv	1.2	46	3
26	40	Conv	1.2	33	3
125	25	Conv	1.2	21	3
129	8	Conv	0.8	11	3
215	17	Conv	1.2	14	3
120a	14.54	Conv	1.2	12	3
120b	14.54	Conv	1.2	12	3

878

896

UDF Flushing Days for 2008

365	yearly areas		457	Day UDF	
89	bi-yearly		85	Night UDF	
0	tri-yearly		12	Conventional	
453	Crew Days		542	UDF Crew Days	
3.0	Number of Crews		3.6	Number of UDF Crews	

UDF Miles for 2008

294	yearly areas		460	Day UDF	
211	bi-yearly		45	Night UDF	
0	tri-yearly		372	Conv	
505	UDF miles		505	UDF Miles	

Yearly UDF Miles for Future Plan

294	yearly areas	
410	bi-yearly	
173	tri-yearly	
878	Total Miles	
557	Miles per year	

# Madison Water Utility: 2007 Flushing Report

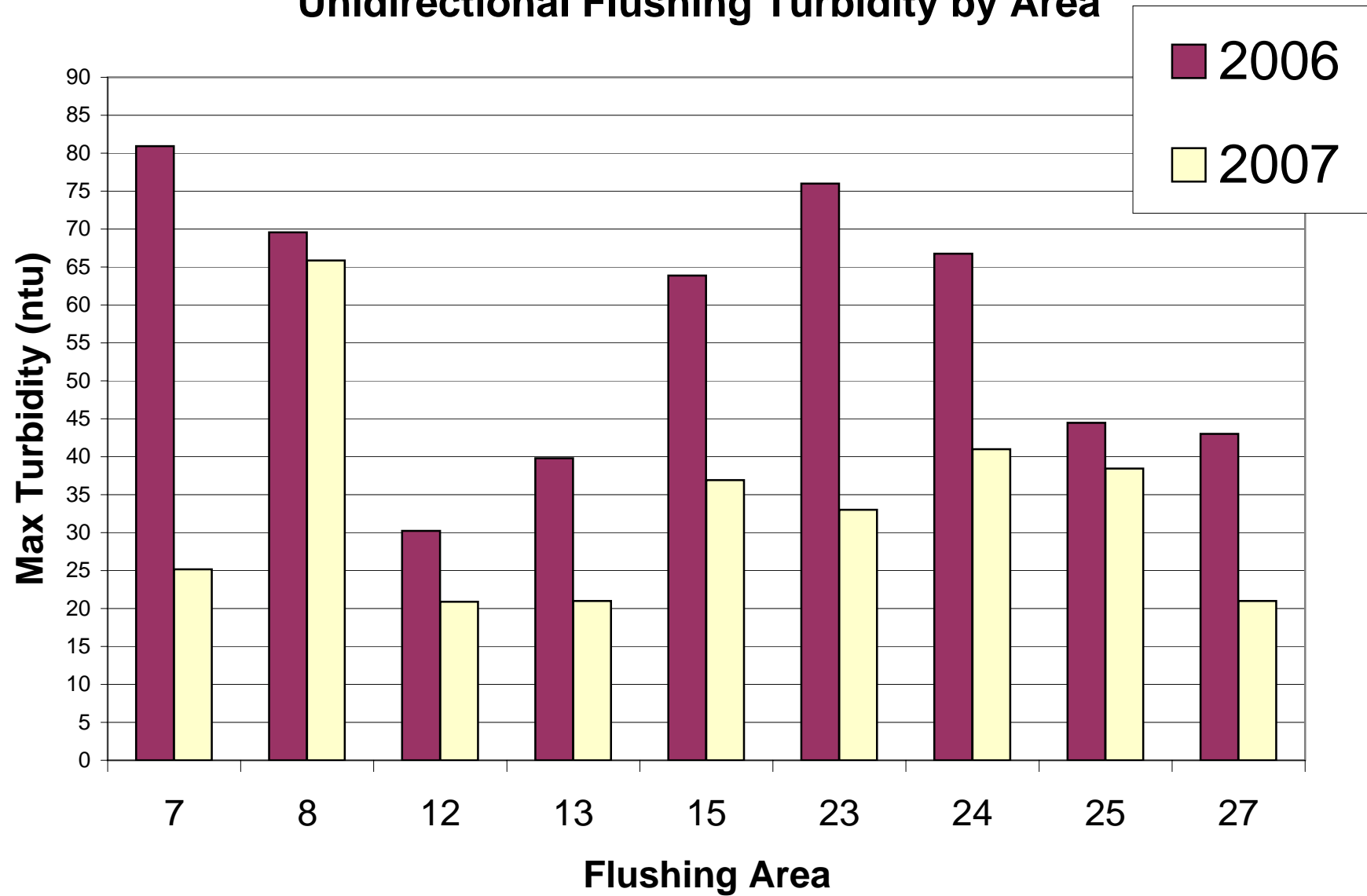
Madison Water Utility: 2007 Flushing Report											124.8	million gallons: Total Water Use			
Month	Number of UDF Runs	Number of UDF Runs Running Total	UDF Flow (mil gal)	UDF Flow (mil gal) Running	Miles Flushed	Miles Flushed Running	Running Percent Flushed	Running Percent Goal	Hydrants Flushed UDF	Hydrants Flushed UDF Running total	Conv Hyd Flushed	Conv Flow (mil gal)	Mil Gal per mi (MGPM)	Miles/ Mil Gal (MMPG)	
March	50	50	3.7	3.7	14	14	2	0.0	44	44			0.26	3.8	
April	294	344	12.7	16.4	75	89	11	12.5	272	316			0.17	5.9	
May	310	654	13.5	29.8	78	167	20	25.0	253	569			0.17	5.8	
June	412	1066	17.8	47.6	99	266	32	37.0	343	912	43	1.4	0.18	5.6	
July	443	1509	13.4	61.0	95	361	44	50.0	383	1295			0.14	7.1	
August	449	1958	15.9	76.9	120	481	58	62.5	390	1685			0.13	7.5	
September	433	2391	14.2	91.1	103	584	70	75.0	378	2063			0.14	7.3	
October	453	2844	14.1	105.2	97	681	79	87.5	412	2475	401	6.9	0.15	6.9	
November	264	3108	11.3	116.5	33	713	84	100.0	236	2711			0.35	2.9	
Year to Date*	2979		116.5		710		84	100.0	2365		444	8.3	0.16	6.1	2007 UDF
reflushed (Oct-Nov)					38		5	0.0					0.15	6.8	2007 UDF + Conventional
													0.25	3.9	2006 UDF
*Some year-to-date totals are less than sum of the months because some hydrants and mains are flushed multiple times.													0.20	4.9	2006 UDF + Conventional
													0.14	7.3	2005 UDF + Conventional

36.6 miles were reflushed in areas 8, 11 and 23 in November, 1.8 miles were reflushed in October in area 8. These miles are not included in the totals above.

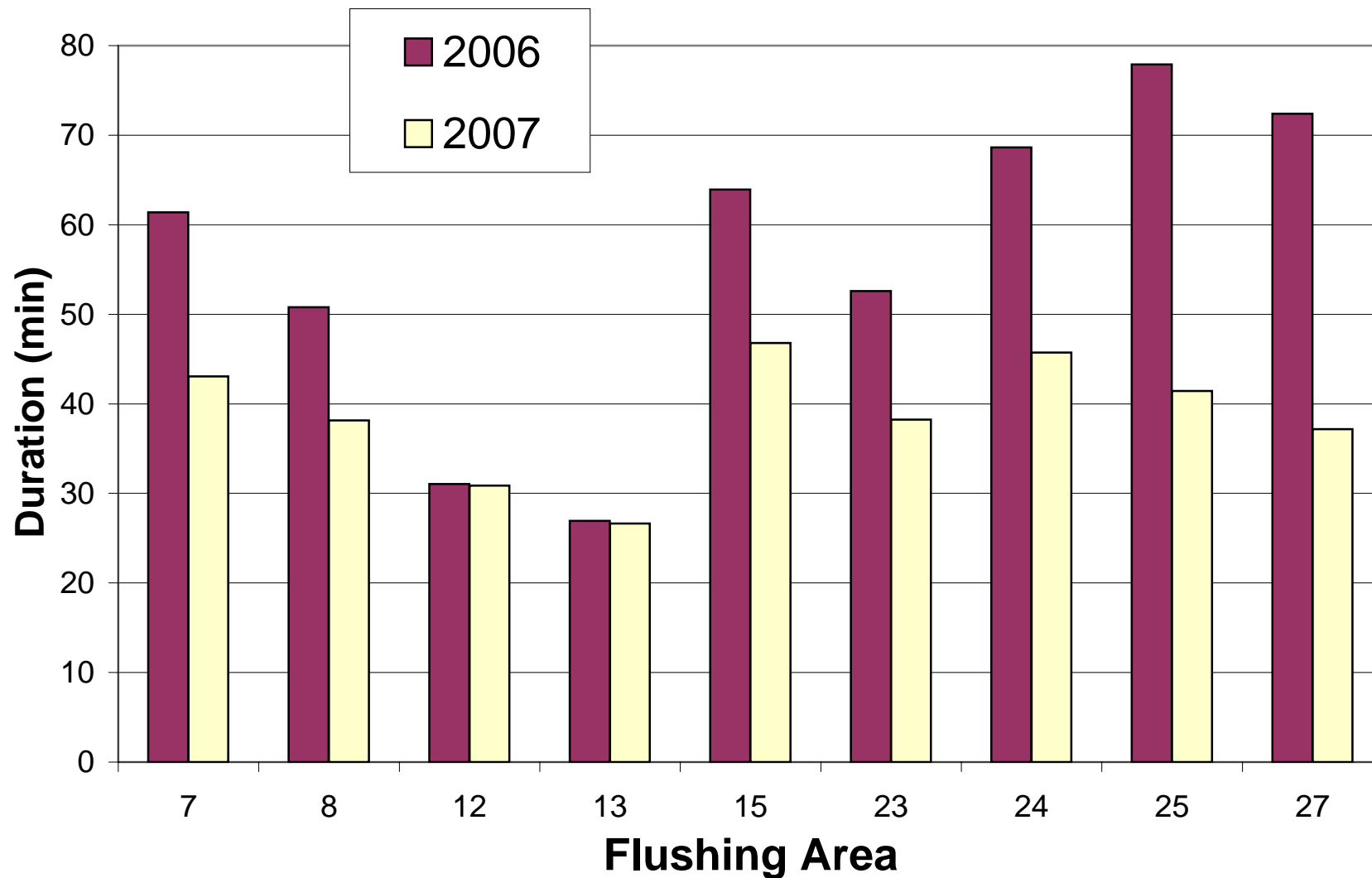
92 miles (11% of the system) in areas 9, 20, and 26 were not unidirectionally flushed this year, but were flushed conventionally.

Records indicate we unidirectionally flushed 710 miles in 2007 (84% of the system). Since this 84% plus the 11% that was not flushed unidirectionally only comes to 95%, this means that we do not have records for 6% of the system in the areas we DID flush unidirectionally. This 6% is a combination of mains that cannot be flushed (dead ends without hydrants or at pressure district boundaries), construction areas purposely skipped, new mains not yet added to the UDF database, and data entry errors.

## Unidirectional Flushing Turbidity by Area

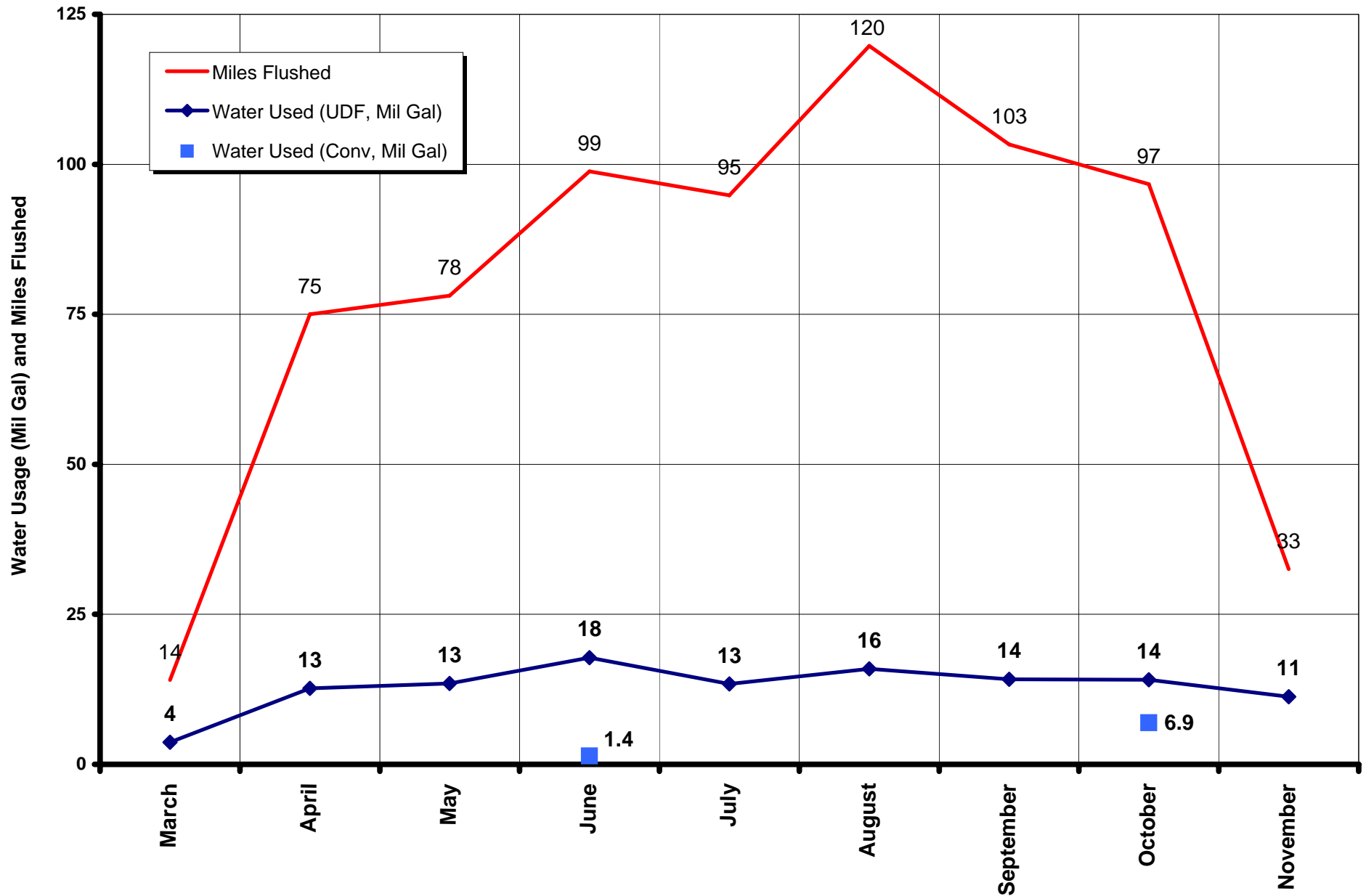


## Unidirectional Average Flushing Duration by Area

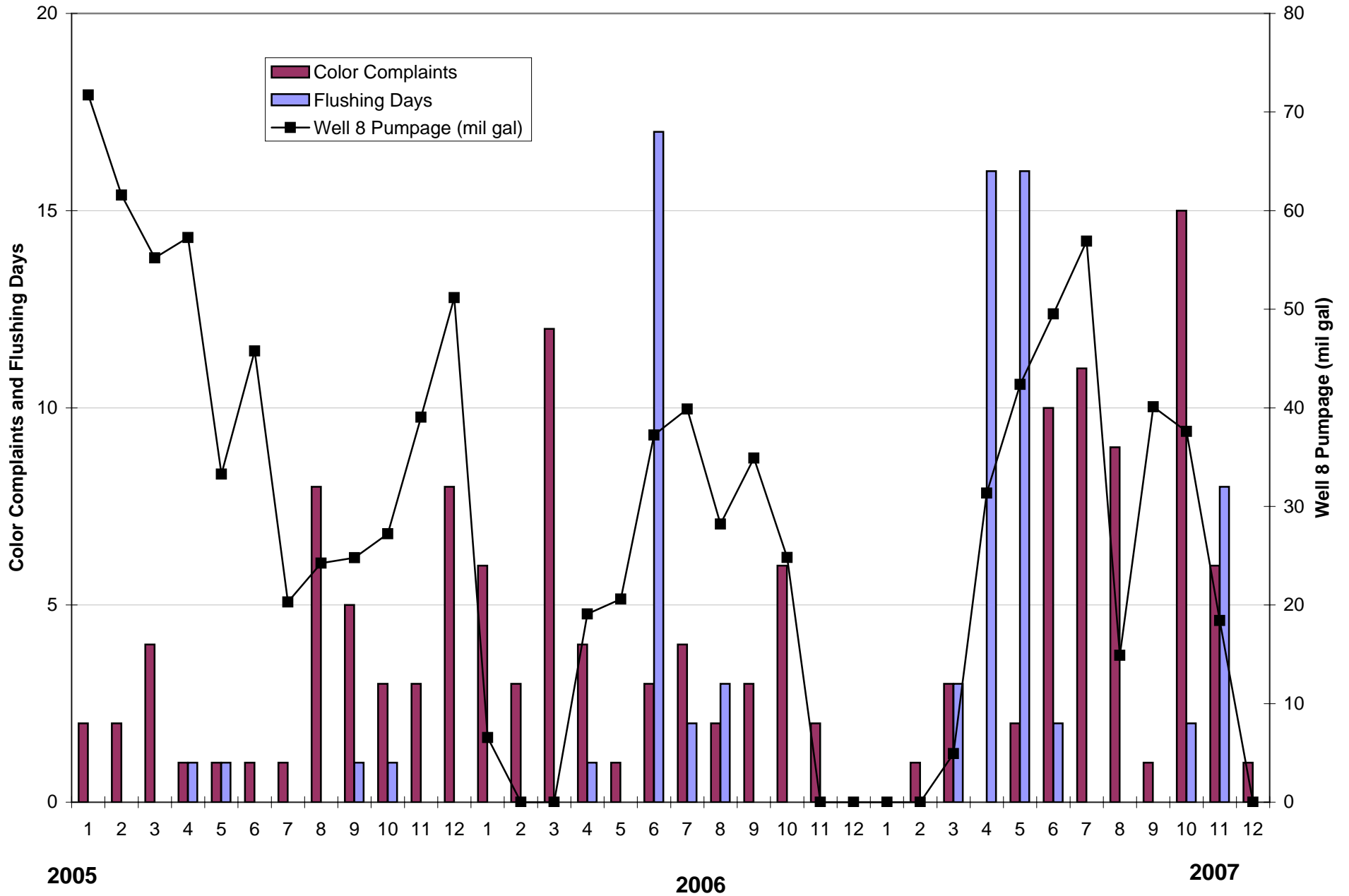


## Flushing 2007

### Water Usage and Miles Flushed

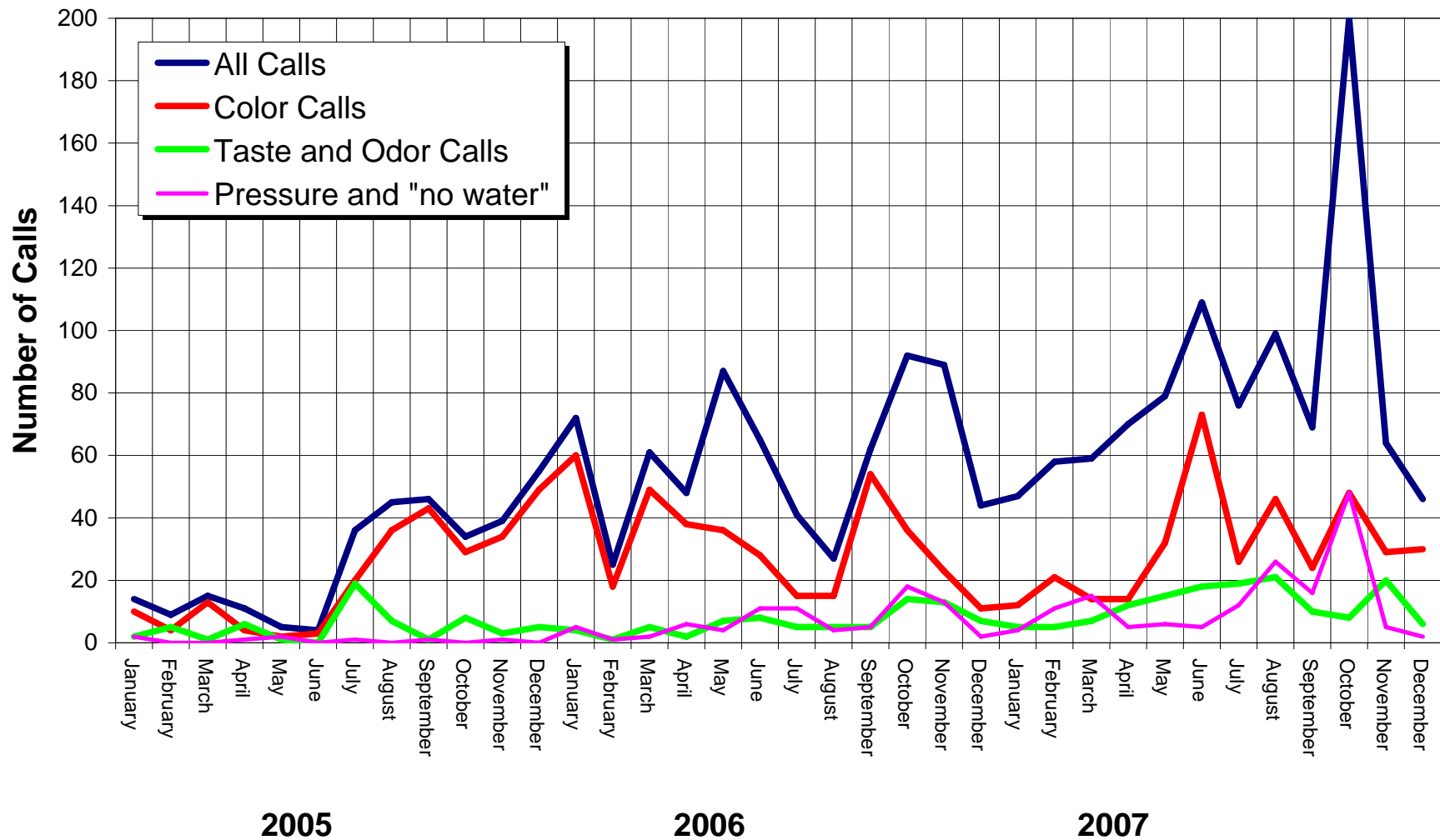


# Alder District 6 Colored Water Complaints



# Madison Water Utility: Water Quality Calls

2005-2007



Madison Water Utility  
Water Quality Call Summary  
2005-2007  
January 23, 2008

Year	Month	Month	All Calls	Color Calls	Other	Non-Color Complaints	NotOther	Taste and Odor	Pressure and "no water"	Taste	Odor	Pressure Calls	No Water	Mn Calls_notColor	MnCalls
2005	1	January	14	10	1	3	13	2	2	0	2	2	0	1	1
2005	2	February	9	4	0	5	9	5	0	1	4	0	0	0	0
2005	3	March	15	13	1	1	14	1	0	1	0	0	0	0	0
2005	4	April	11	4	1	6	10	6	1	2	4	1	0	0	0
2005	5	May	5	2	1	2	4	1	2	0	1	2	0	0	0
2005	6	June	4	3	1	0	3	0	0	0	0	0	0	0	0
2005	7	July	36	20	6	10	30	19	1	12	7	1	0	0	0
2005	8	August	45	36	4	5	41	7	0	0	7	0	0	0	0
2005	9	September	46	43	2	1	44	1	1	1	0	1	0	0	0
2005	10	October	34	29	0	5	34	8	0	4	4	0	0	0	0
2005	11	November	39	34	1	4	38	3	1	0	3	1	0	0	0
2005	12	December	55	49	4	2	51	5	0	3	2	0	0	3	6
2006	1	January	72	60	6	6	66	4	5	1	3	3	2	3	8
2006	2	February	25	18	6	1	19	1	1	1	0	1	0	0	0
2006	3	March	61	49	8	4	53	5	2	2	3	1	1	2	2
2006	4	April	48	38	4	6	44	2	6	1	1	3	3	0	1
2006	5	May	87	36	41	10	46	7	4	4	3	3	1	31	35
2006	6	June	65	28	23	14	42	8	11	4	4	7	4	9	10
2006	7	July	41	15	13	13	28	5	11	1	4	4	7	6	6
2006	8	August	27	15	5	7	22	5	4	3	2	1	3	3	4
2006	9	September	62	54	4	4	58	5	5	3	2	3	2	1	1
2006	10	October	92	36	30	26	62	14	18	5	9	7	11	3	3
2006	11	November	89	23	45	21	44	13	13	4	9	9	4	9	9
2006	12	December	44	11	24	9	20	7	2	4	3	2	0	6	6
2007	1	January	47	12	27	8	20	5	4	2	3	3	1	4	4
2007	2	February	58	21	22	15	36	5	11	1	4	5	6	3	3
2007	3	March	59	14	27	18	32	7	15	3	4	6	9	4	4
2007	4	April	70	14	42	14	28	12	5	7	5	4	1	2	2
2007	5	May	79	32	29	18	50	15	6	3	12	2	4	1	1
2007	6	June	109	73	20	16	89	18	5	9	9	3	2	0	0
2007	7	July	76	26	23	27	53	19	12	8	11	7	5	0	0
2007	8	August	99	46	14	39	85	21	26	8	13	13	13	0	2
2007	9	September	69	24	21	24	48	10	16	4	6	0	16	2	2
2007	10	October	200	48	102	50	98	8	48	4	4	31	17	0	0
2007	11	November	64	29	15	20	49	20	5	6	14	4	1	0	0
2007	12	December	46	30	10	6	36	6	2	2	4	2	0	0	0